

Areas of High Poverty Density

The US Census Bureau organizes the county into census tracts in order to conduct the decennial census. Each tract is required to be within the same county, and be contiguous. Because census tracts were designed to facilitate the census count, some tracts can be very large in rural areas where few people live, or quite small in urban areas with a dense population.

Tracts are useful for analysis of social and demographic issues, and a good deal of data is collected by the Census Bureau at the census tract level. This analysis looks at poverty in census tracts in Oregon.

The Census Bureau defines census tracts of “high poverty density” as any tract that has 20 percent or more residents living in poverty. Oregon has quite a few of these areas – more than can be described in this publication. To highlight the very highest poverty areas. This report focuses on areas where one in three residents (33%) are in poverty. For a more detailed analysis of all the high poverty density areas, see <http://www.oregon.gov/dhs/ofra/Pages/index.aspx> and click [High Poverty Hotspots - 2014](#).

At right is a map showing all of the state’s highest poverty areas. The graphics are organized so that color represents the percent of the population in poverty, while the size of the circle represents the total number of people in poverty. The most intensive poverty areas would therefore have a high percent in poverty, and a large number of people in poverty.

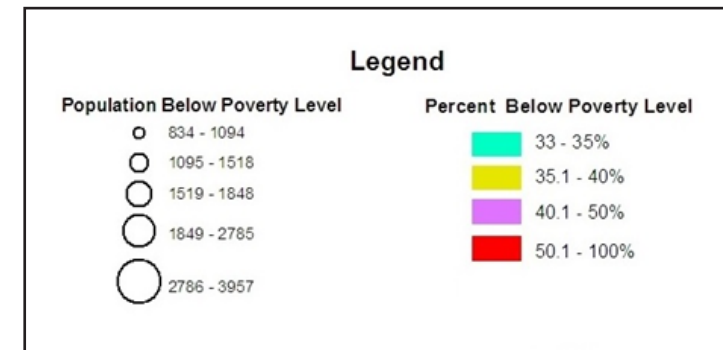
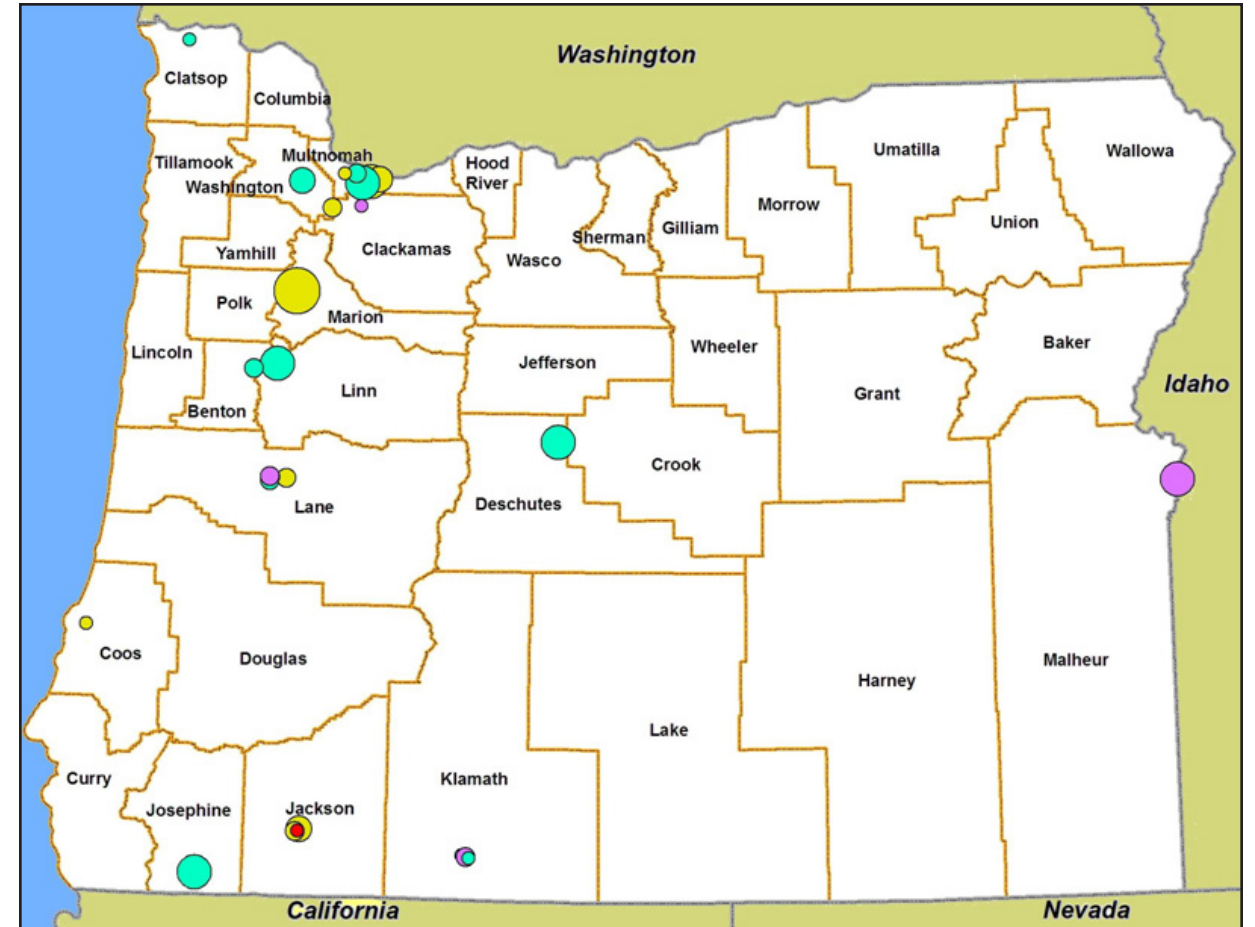
As can be seen on the map, poverty density is not an urban phenomenon. One of the highest poverty counts is in rural Josephine County, in the Cave Junction area. Another is located in Redmond, in Deschutes County.

High Poverty areas can happen in any part of the state, regardless of overall economic conditions. Clackamas and Washington counties are generally considered high-wealth areas when measuring median household income, yet both contain high-poverty neighborhoods.

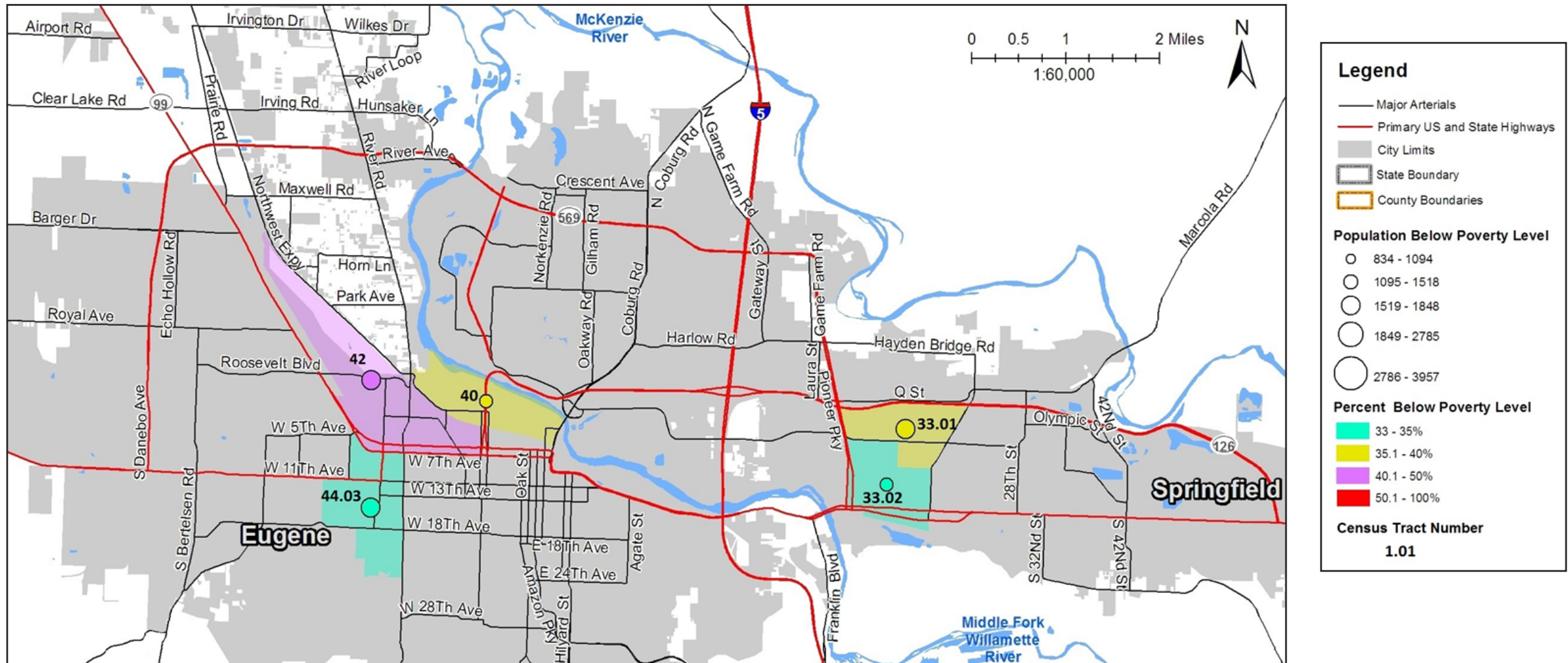
Detailed maps of the high-poverty areas can be found on the following pages, along with information about the demographics of the census tracts being examined. Almost all the census tracts displayed in this publication are different than the state overall in several ways:

1. A higher percentage of people on public assistance (TANF, SNAP),
2. A higher percentage of single parents (especially in urban tracts),
3. A higher percentage of disabled persons (especially in rural tracts),
4. A larger number of racial and ethnic minorities (true of all urban and some rural tracts),
5. A much smaller number of high school graduates, and
6. A larger number of persons employed in service sector jobs. Service sector jobs are often found to be low-paying, and provide only part time or part year employment.

Some census tracts that met the criteria for inclusion in this analysis were eliminated because they contained a very large number of people living in group quarters, such as is common with college dormitories and prisons. Other tracts were eliminated due to the overwhelmingly large number of college students living in the tract (the cutoff was 75 percent or greater enrolled in college). Although it is true that some college students meet the traditional definition of poverty, others who have little or no income are actually supported by other means, and including them could distort this analysis.

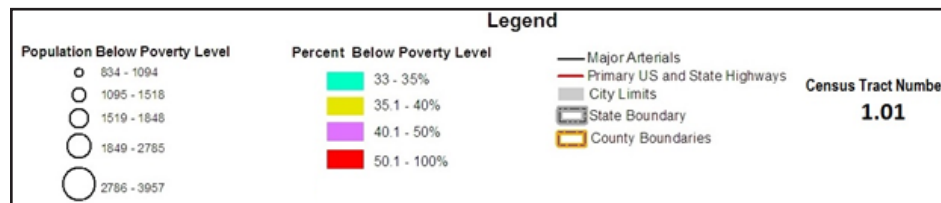
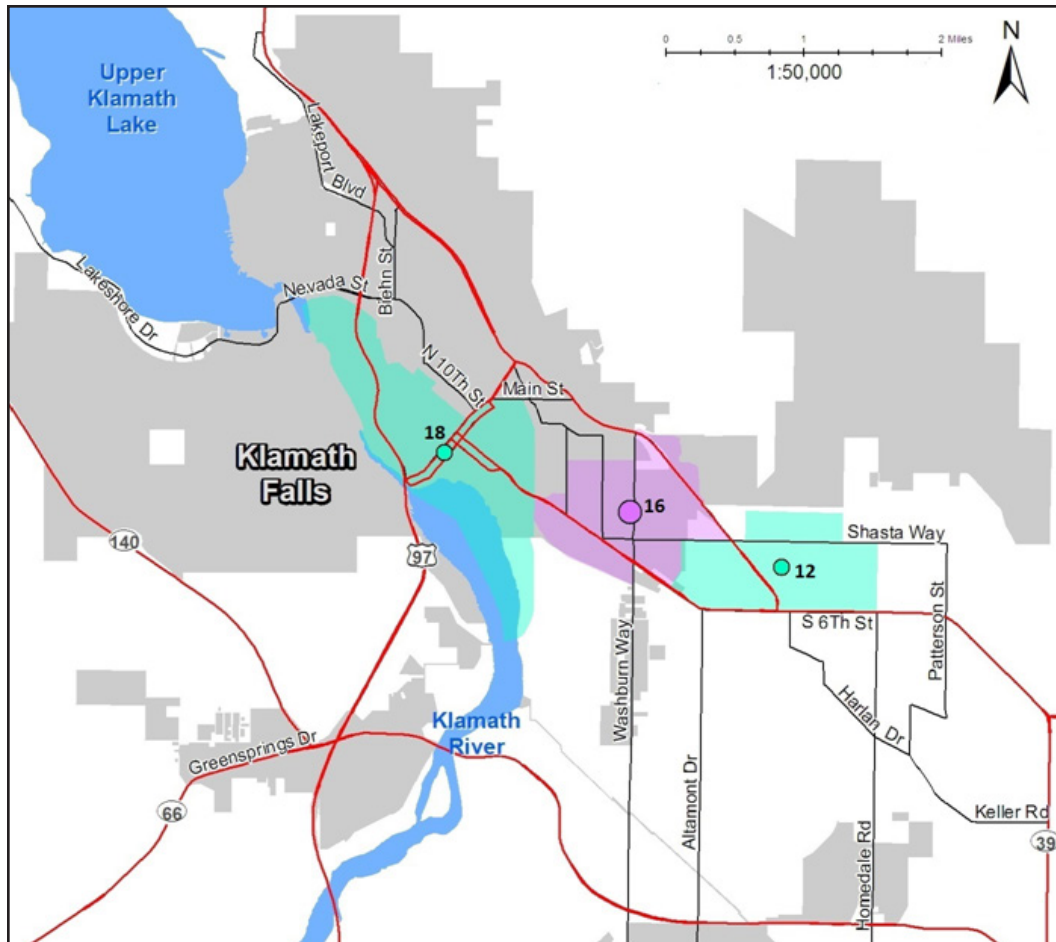


Areas of High Poverty Density: Eugene/Springfield



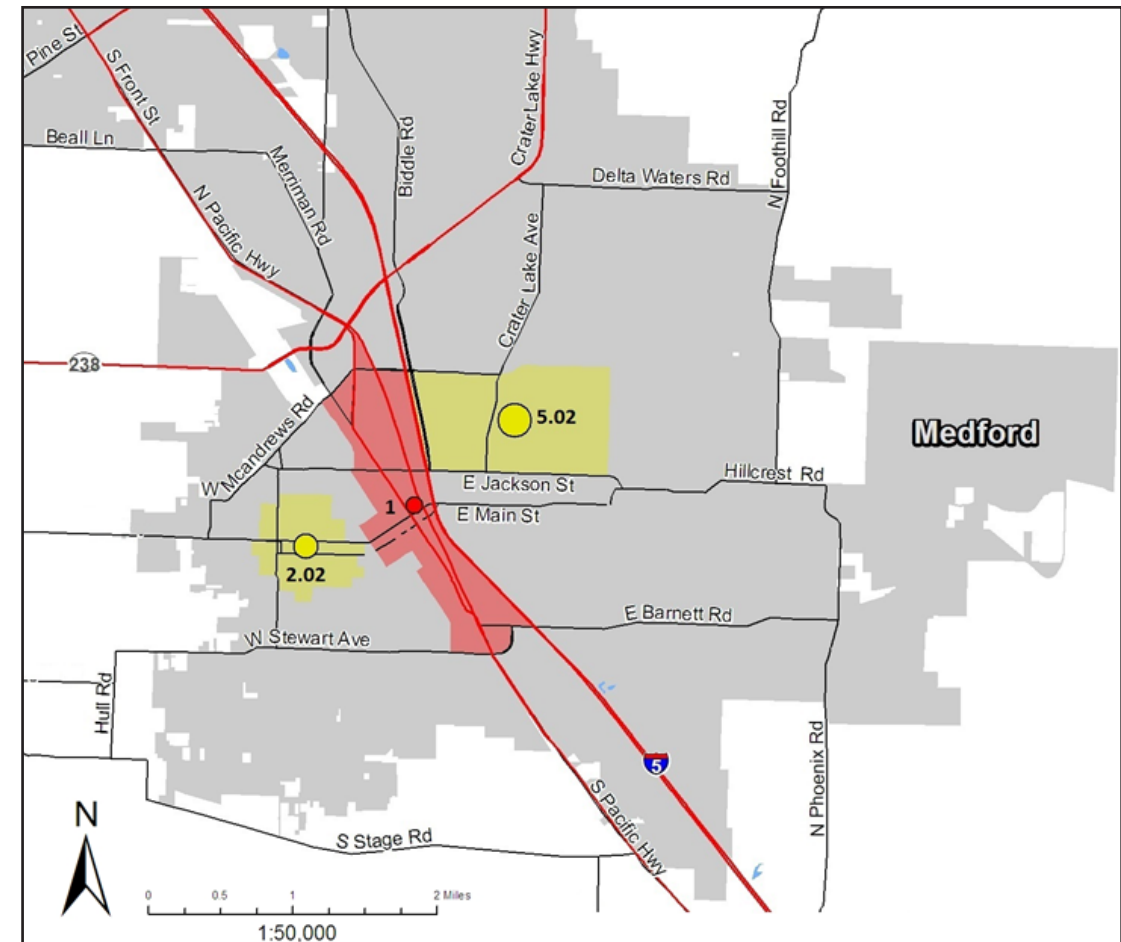
Eugene/Springfield - This metro area contains several areas of high-density poverty. All four census tracts illustrated here have a large percentage of disabled people in the census tract and a large percentage of people living on \$10,000 or less per year. It should be noted that other census tracts which also show high-poverty density in the Eugene area have been eliminated from this analysis, given that they contain a large preponderance (over 75%) of residents enrolled in college.

Areas of High Poverty Density: Klamath Falls and Medford



Klamath Falls - Census tracts 9712, 9716, and 9718 (referred to as 12, 16, and 18 on the map above) follow state Highway 39 and Business 97 through the northern part of the city of Klamath Falls. Tracts 9712 and 9716 have high concentrations of Hispanics, especially census tract 9716, where over a third of residents are Hispanic. Tract 9716 is also notable in the number of residents with a college education – only 5.7 percent, the lowest of all high-poverty tracts under consideration in this document. Statewide, 30 percent of the population is college educated.

Census tract 9718 has a very high American Indian population (12.5 percent, versus less than 2 percent statewide) and a high percent of disabled residents (22 percent).



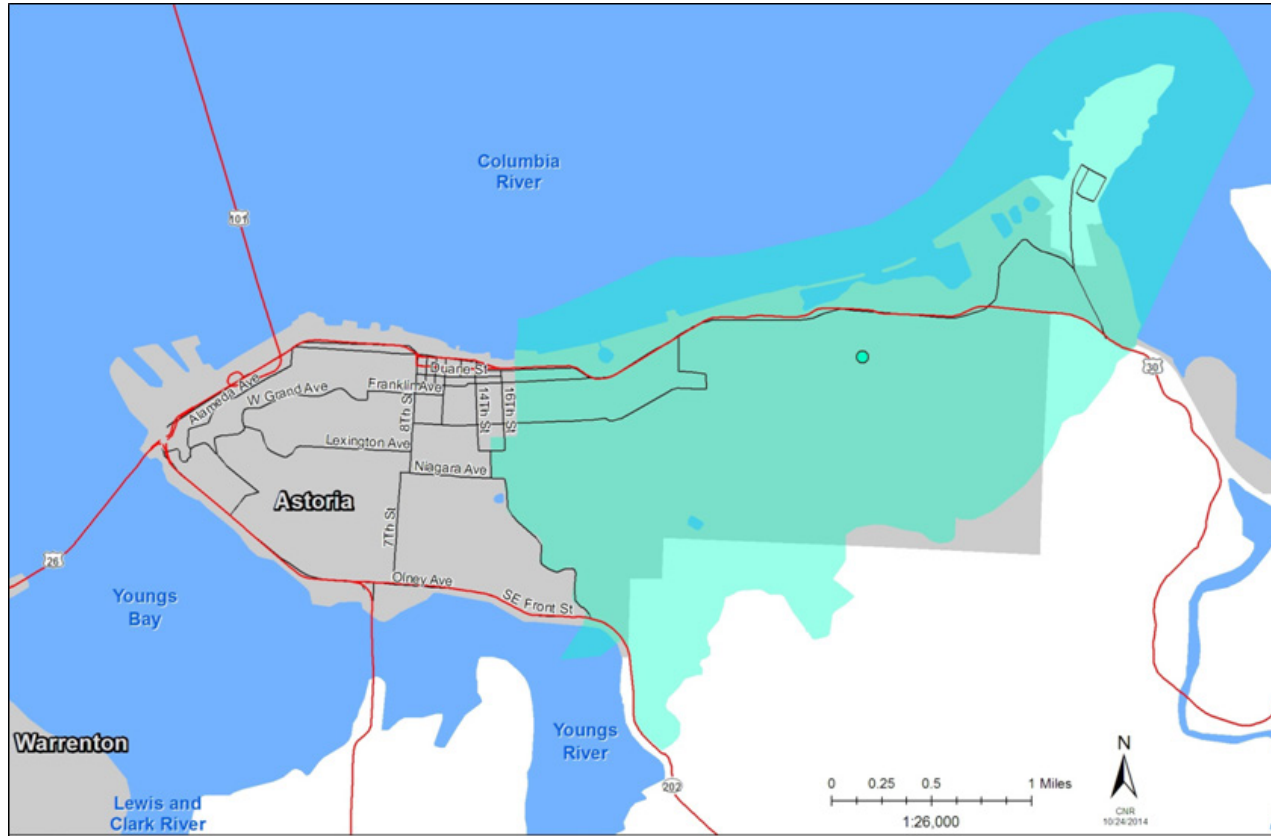
Medford - Jackson County's census tract 1 is sandwiched between highway 99 and interstate 5 in central Medford. It contains the highest concentration of poverty of any tract in the state. Over 50 percent of the residents of the area are living in poverty. Almost a third of all households are getting by on less than \$10,000 a year. It has the highest percentage of residents in service sector jobs (42 percent) of any high-poverty tract in the state, is very high in numbers of disabled people (28.5 percent, essentially double the statewide value), and is very high in percentage Hispanic (one third of all residents). Probably as a result of the large Hispanic population, the number of households where English is not spoken in the home is very high (28 percent of the area, compared to 15 percent statewide).

Only 64 percent of the residents of census tract 1 completed high school.

Census tract 2.02 is adjacent to tract 1, to the west along west Main St. like census tract 1, about a third of the residents are Hispanic. It also has a high number of residents who live on less than \$10,000 a year.

Tract 5.02 is east of interstate 5, south of East McAndrews Road. It is high in the number of households getting by on less than \$10,000 a year.

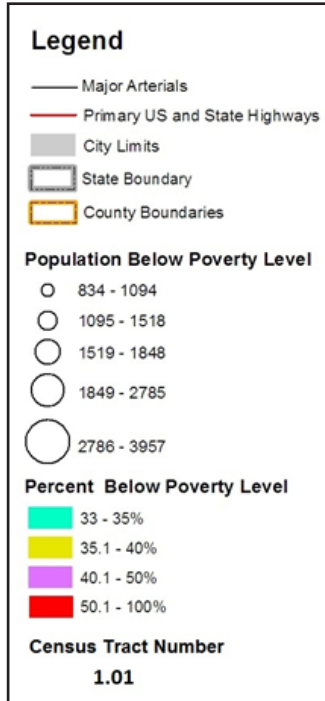
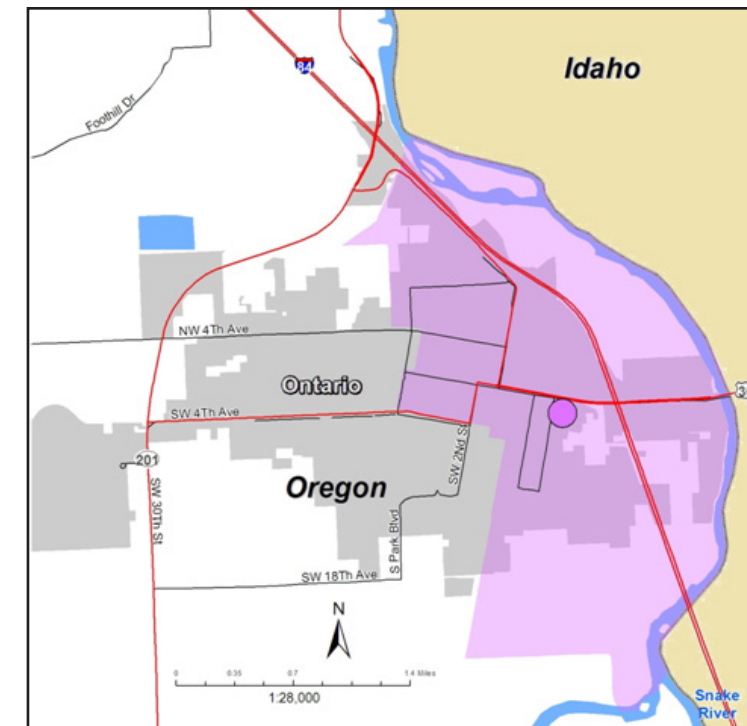
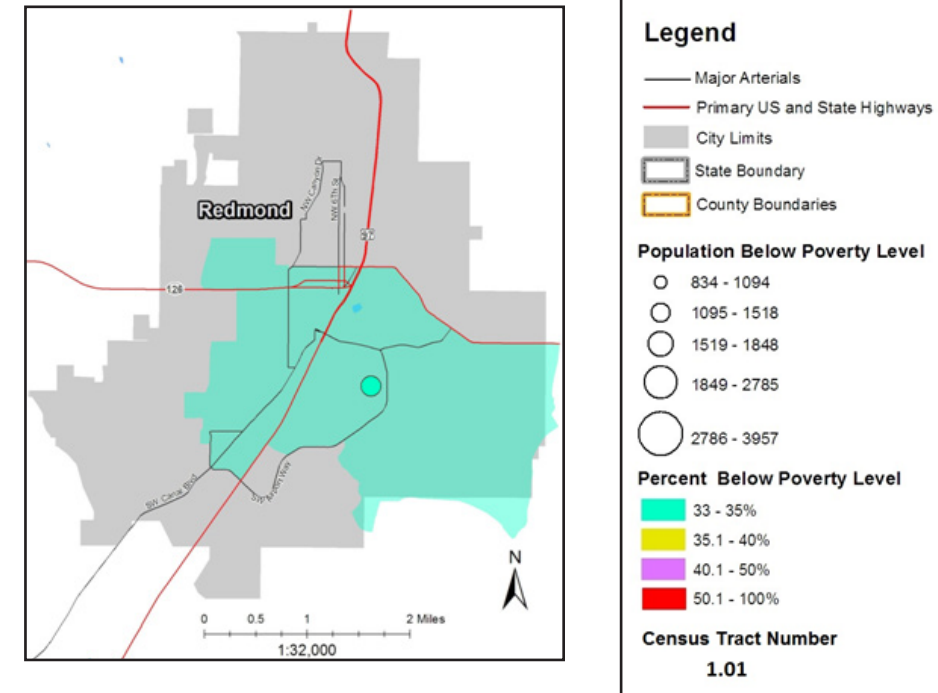
Areas of High Poverty Density: Astoria, Redmond, and Ontario



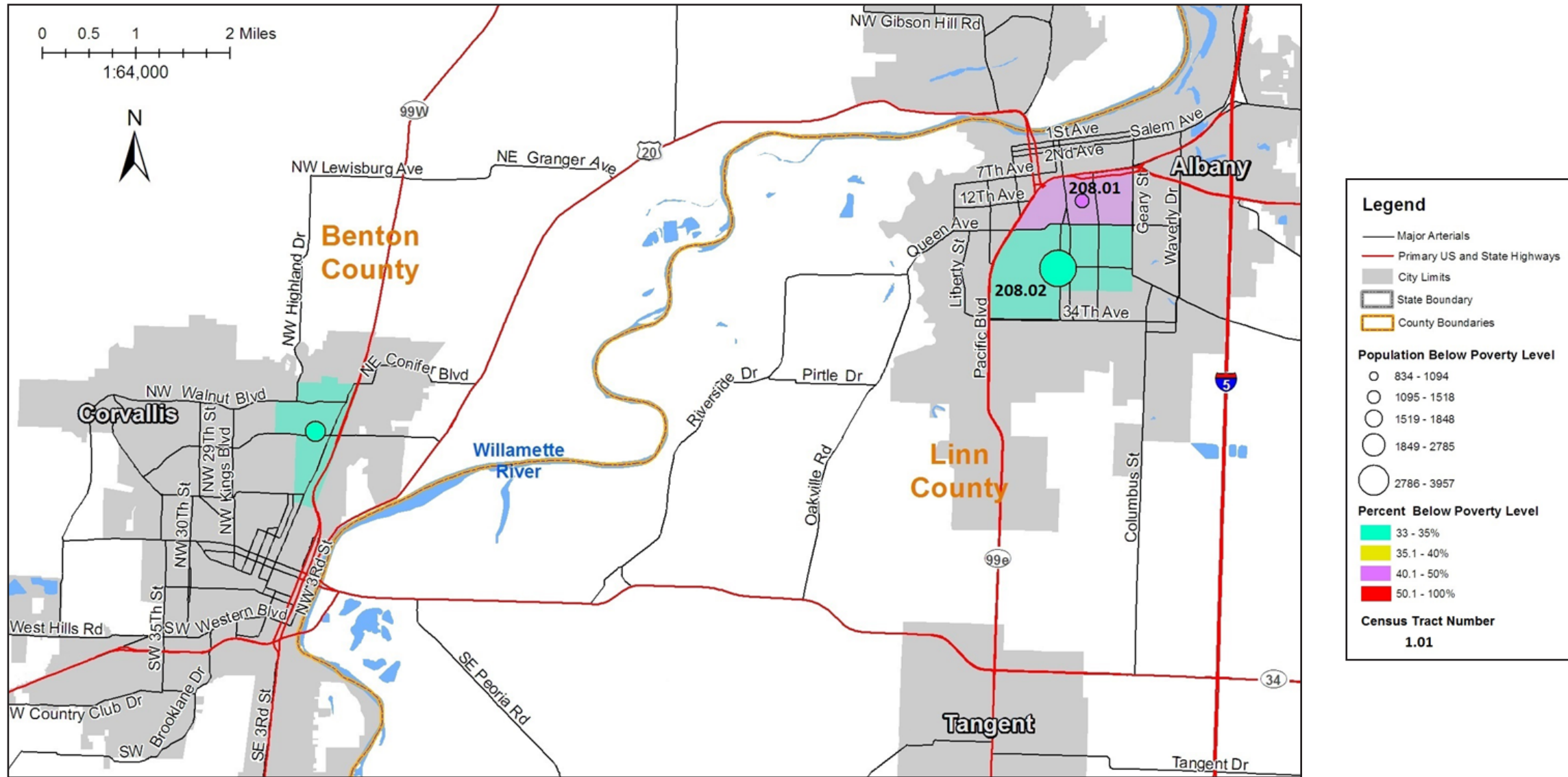
Astoria - Census tract 9503 in Clatsop County (above) comprises the eastern half of Astoria. It contains a large concentration of Hispanic residents (17 percent, compared to 12 percent of the state as a whole), and a large percentage of households where a language other than English is spoken in the home (20 percent, versus 15 percent statewide). Despite the fact that the eastern Astoria area has high-density poverty, it is somewhat economically diverse, with a higher median household income than most areas fitting the high-density definition.

Redmond - Census tract 9 in Deschutes (upper right) represents the southeastern area of the town of Redmond, Oregon. Its northern boundary is essentially highway 126 as it snakes through town. It has a high concentration of Hispanic residents (15 percent in the tract, compared to 12 percent statewide) and a higher concentration of households with children (thirty-seven percent in the area, compared to 29 percent statewide).

Ontario - Malheur County's census tract 9704 (bottom right) comprises the eastern half of the city of Ontario. It is the smallest, most densely populated census tract in an otherwise rural county. It is very high in number of households getting by on less than \$10,000 a year (21 percent), very high in number of Hispanic residents (54 percent, the highest ratio of all tracts measured here) and is very high in residents who speak a language other than English in the home (45 percent). Only 65 percent of the residents of the eastern part of Ontario completed high school.



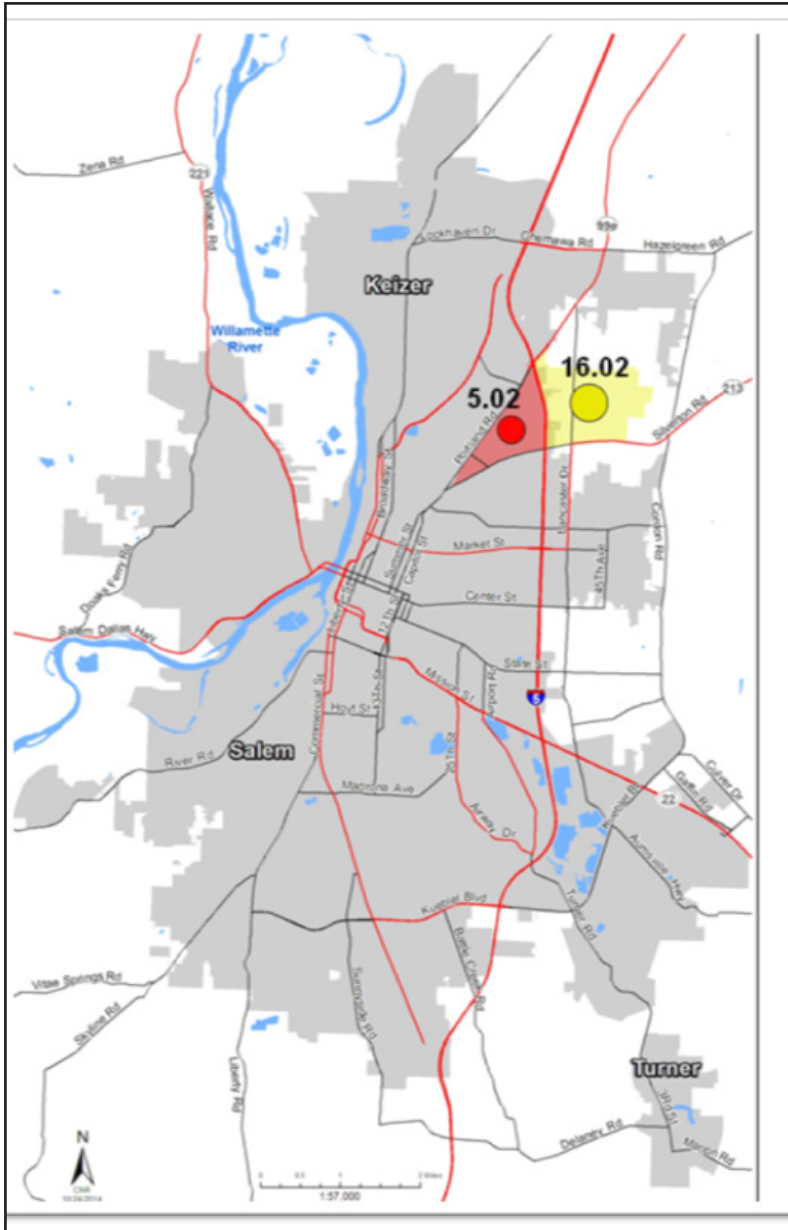
Areas of High Poverty Density: Corvallis and Albany



Corvallis - Census tract 10.01 hugs the western side of highway 99 as it enters the city limits of Corvallis. It is higher in racial/ethnic minorities compared to statewide (larger numbers of African American, Asian, and Hispanics than can be found statewide), and has a high number of families reporting speaking a language other than English around the house (27 percent in the tract, compared to 15 percent statewide). It should be noted that other census tracts which also show high-poverty density in the Corvallis area have been eliminated from this analysis, given that they contain a large preponderance (over 75%) of residents enrolled in college.

Albany - Neighboring Linn County has two census tracts that are high in poverty: 208.01 and 208.02. These tracts represent the central part of the city of Albany. These two tracts contain a large number of households that get by on less than \$10,000 a year. Tract 208.01 has a higher percentage of American Indian residents (5.8 percent) than is found statewide. Tract 208.02 contains a very high concentration of disabled persons (28.5 percent of residents).

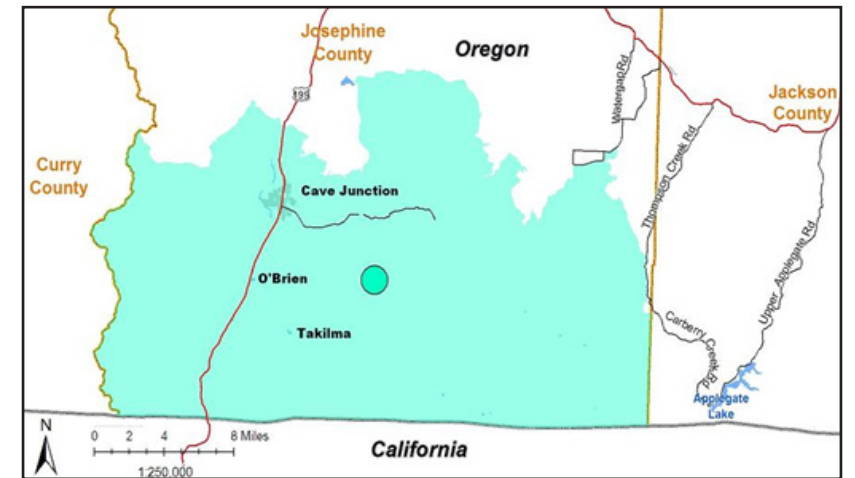
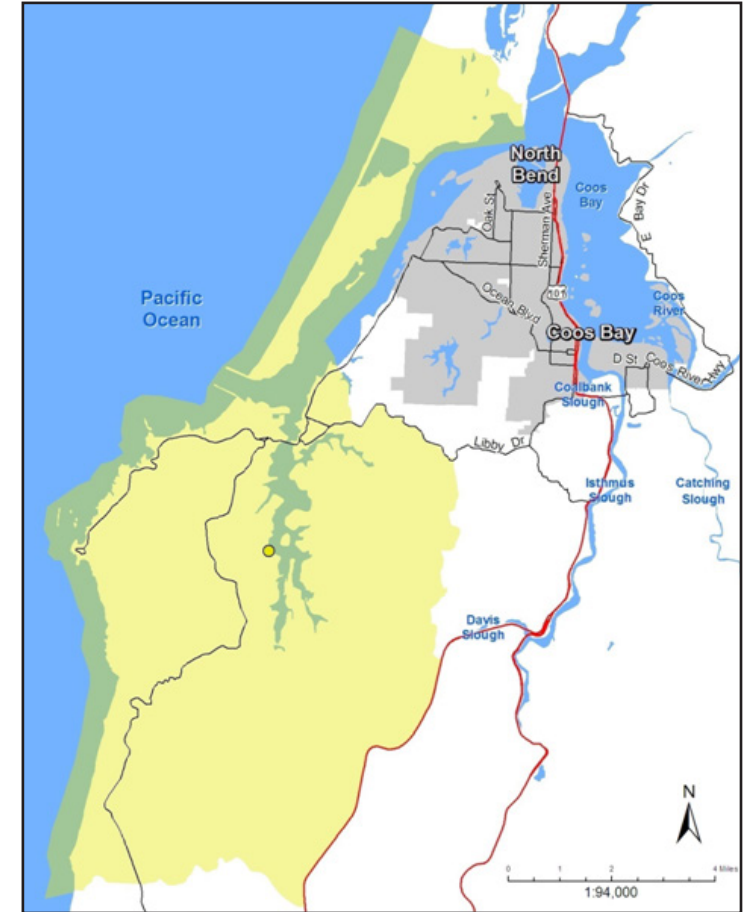
Areas of High Poverty Density: Salem, Rural Josephine County and Coos Bay



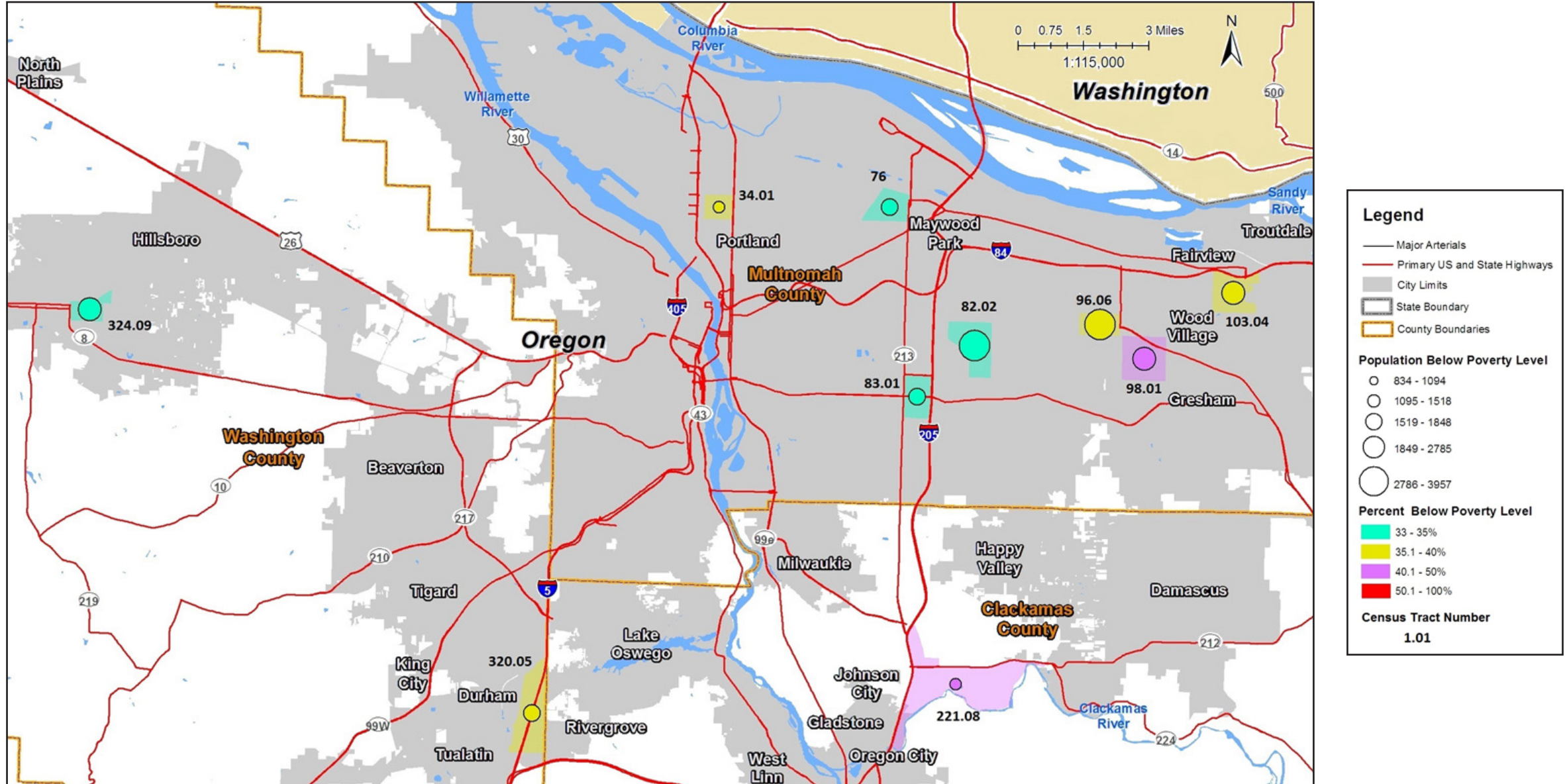
Salem/Keizer - The area of Northeast Salem (left) containing census tracts 5.02 and 16.02 are among the most densely populated and highest poverty in the state. Both tracts have a large number of residents earning \$10,000 or less (19 percent and 21 percent respectively). They are both high in single-parent households – over 25 percent of all households in both tracts. Almost half of all households in tract 5.02 contain children –the second highest ratio among the high-poverty tracts. About fifty percent of the residents of both of these tracts speak a language other than English in the household.

Coos Bay - Census tract 5.02 in Coos County (right) is in the Coos Bay area of the county. It contains a high percentage of disabled people (27 percent). In other ways, this area does not have the usual indicators of poverty, and has a very low percentage of households on public assistance compared to other tracts in this analysis.

Rural Josephine County - Census tract 3616 (lower right) comprises a large section of southern Josephine County along the California border. It includes the towns of Cave Junction, O'Brien, Kerby, and Takilma. It is the most rural of the census tracts with high poverty concentrations, and has a high population of people over the age of 65.



Areas of High Poverty Density: Portland Metro



For more information about the poverty density in Portland Metro area, please see the following page.

Multnomah County has a large number of census tracts that conform to the statistics of a very-high-density poverty area (over 33 percent in poverty).

Census tract 34.01 includes portions of the Humboldt and King neighborhoods. It contains a large number of single parent households (24 percent of all households, compared to 8.5 percent statewide). This census tract contains the largest concentration of African Americans of any high-poverty area. Thirty-five percent of the residents of this tract are Black, while statewide African Americans make up less than two percent of the population.

Census tract 76 is the Cully neighborhood. It is high in Hispanic households, who make up 28 percent of the population. Forty-one percent of the population speaks a language other than English in the home, suggesting a large immigrant population.

Census tract 82.02 is the Mill Park area. It is the most economically diverse area that is included in this analysis – it contains more people with high income and lower levels of public assistance than any other census tract in this analysis. However, it does contain a large number of people in poverty. This area has a high concentration of African Americans, Asians, and Hispanics. Forty-one percent of the residents of this tract speak a language other than English in the home.

Tract 83.01 is a portion of the Foster Powell neighborhood. It contains a high concentration of people living on \$10,000 or less (19 percent, compared to 7.6 percent statewide). It is very high in the proportion of residents over 65 (35 percent) and the number of residents who speak a language other than English in the home (52 percent). This census tract contains a large number of African Americans (11 percent) and an especially high concentration of Asian Americans (29 percent in a state that has an Asian minority of 3.9 percent).

Census tract 96.06 is part of Gresham. It has a very high concentration of households who get by on \$10,000 or less a year (22.5 percent). It is also very high in the number of households with children (45 percent). Thirty-six percent of the census tract is Hispanic (compared to 12.5 percent statewide).

Census tract 98.01 is in Gresham, near Venice Park. It has a high concentration of single parents (22 percent, compared to a statewide value of 8.5 percent), and a high concentration of households containing children in general (42 percent). It contains a large number of non-white residents, with high concentrations of African Americans, American Indians, and Pacific Islanders/Native Hawaiians. Language other than English is spoken in 39.5 percent of the households. This census tract is also more economically diverse than most in this analysis, and has more relatively high income residents than most high-poverty areas.

Census tract 103.04 is in the Wood Village neighborhood. It contains a high percentage of households with children (42 percent, compared to a statewide value of 29 percent). It also has more non-whites than the state overall, with higher concentrations of African Americans, American Indians, and Pacific Islanders/Native Hawaiians.

Washington County has two high density poverty areas. Census tract 320.05 is in the Durham area of Washington County. It has one of the highest ratios of households with children (over 40 percent) of any high-poverty tract in this analysis. Over 40 percent of the residents are Hispanic. Thirty-eight percent of residents speak a language other than English in the home. Tract 320.05 contains a larger percentage of African Americans, Pacific Islander/Native Hawaiian, and American Indians than can be found statewide.

Census tract 324.09 in Washington County is one of the most densely packed areas of Hillsboro. It runs east from SE 10th Ave to SE 24th Ave. It is very high in single parent households (24 percent, compared to 8.5 percent statewide) and has the highest ratio of households with children present (56.5 percent) of any tract in this analysis. It also has a higher percentage of Hispanics (75 percent) than any other high-poverty tract.

Clackamas County is one of the most affluent and highly populated counties in the state. It has only one tract with high poverty density. Tract 221.08 is bounded by Carver Road to the north and the Clackamas River to the south. Most of the area is industrial, but has some residential interspersed in the area, including a large mobile home park. Very few residents of tract 221.08 have a college education (8.6 percent of the residents of the area, compared to 30 percent statewide). A large number of residents (23 percent) get by on \$10,000 or less per year.