

Who We Are

The Center for Health Statistics (CHS) is Oregon's vital records office.

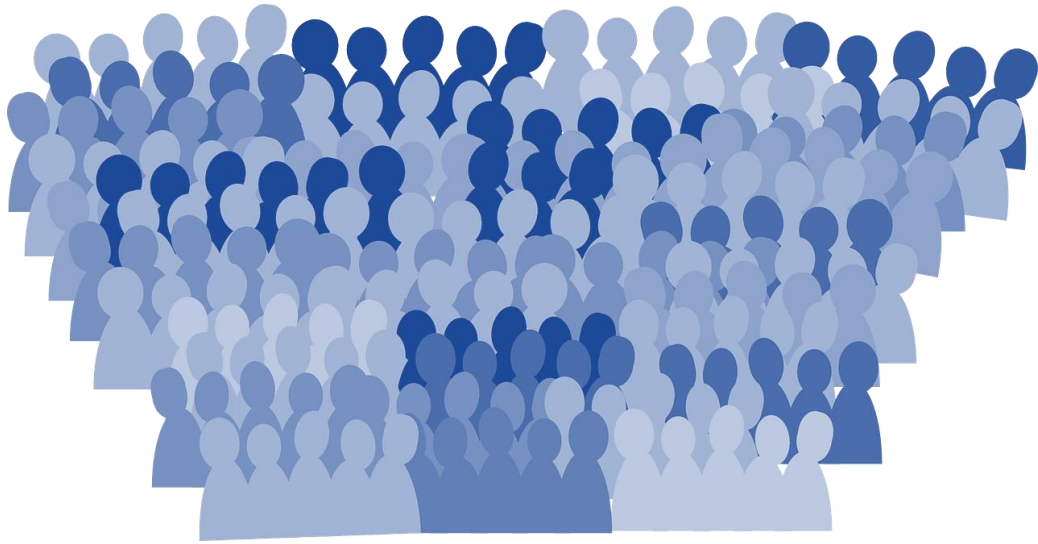
Oregon law requires that every vital event that occurs in Oregon be recorded and stored.

- Birth & Death - 1903
- Marriage - 1906
- Divorce - 1925
- Fetal Death - 1919
- Oregon Registered Dom. Partnership - 2008



What We Do: Register/Store Vital Records

CHS maintains
approximately 6.6
million vital records

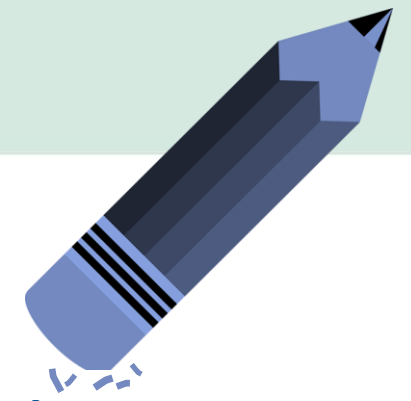


Oregon Vital Events: 2021

(as of 01/01/2022)

Births	41,562
Deaths	44,602
Fetal Deaths	158
ITOPs	6,577
Marriages	24,136
Divorces	11,380
TOTAL	128,415

What We Do: Change Records



Changes to Records = Amendments

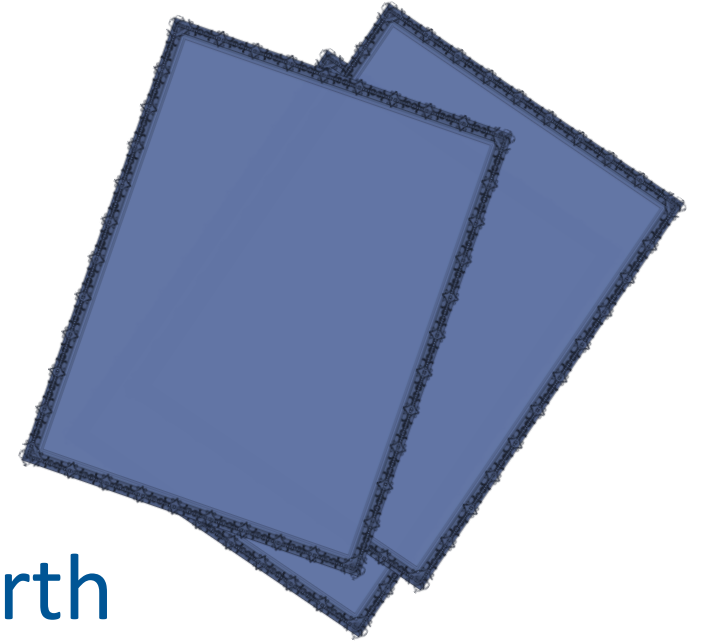
- Adding a parent on a birth certificate to establish paternity
- Preparing new birth certificates for adoptions
- Preparing new birth certificates to reflect gender identity
- Updating cause of death

Approximately 30,500 changes to vital records are done each year.

What We Do: Process Orders/Issue Certificates

Approximately 122,000 certificates are issued to customers each year

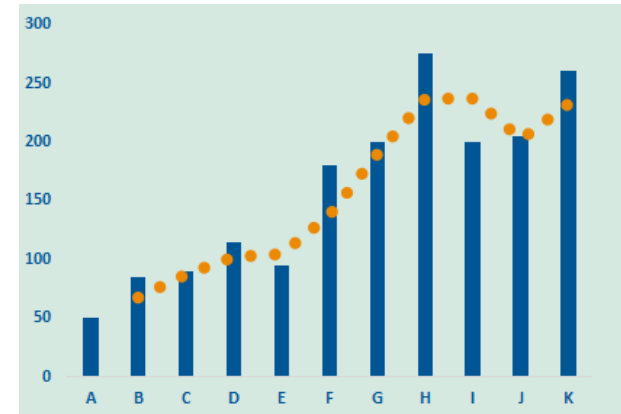
- Produced on special paper
- Confidential
 - Access is limited for 100 years after birth
 - 50 years for other records
- All orders are screened for eligibility



What We Do: Analyze Data from Vital Records

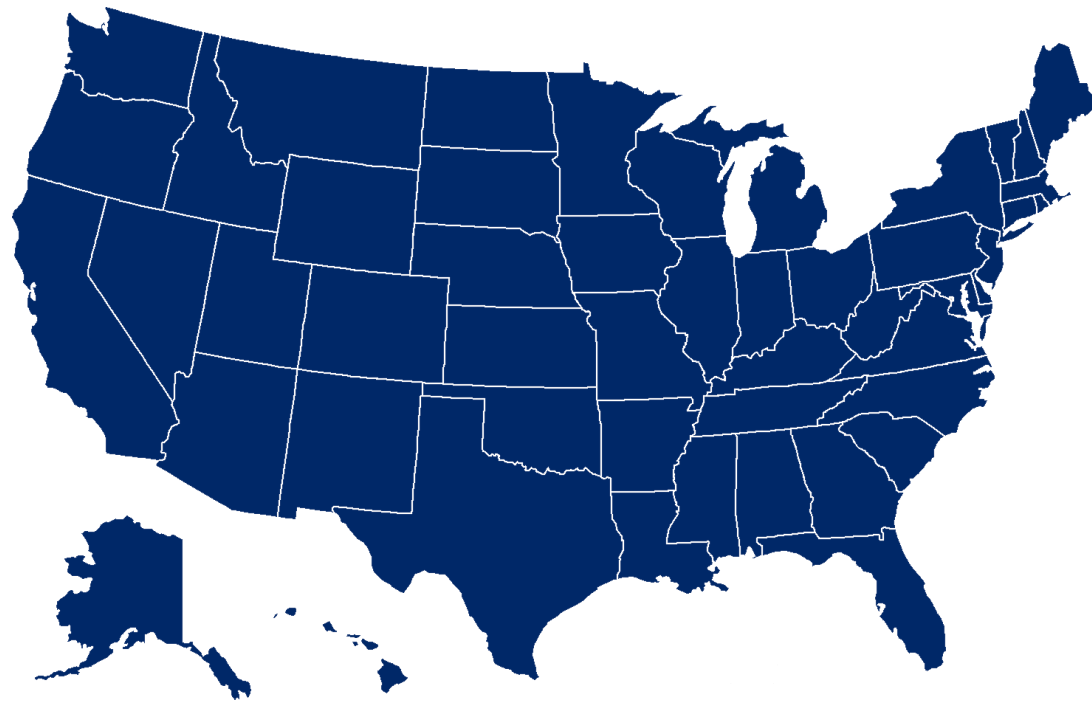
Vital statistics information is foundational for understanding the health of a population

- Health trends
- Leading causes of death
- Teen births
- Examination of health disparities



What We Do: Analyze Data from Vital Records

Timely and accurate data are provided to the CDC's National Center for Health Statistics for comprehensive national statistics

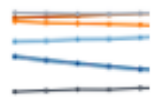


What We Do: Analyze Data from Vital Records

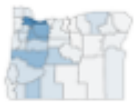
Quarterly and annual statistical reports about various vital records are available in interactive dynamic dashboards.

HealthOregon.org/vitalstats

Birth & Pregnancy Dashboards



Annual Trends Dashboard



County Birth & Pregnancy Dashboard



Planned Place of Birth Dashboard



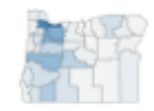
Mortality Data Dashboards



Annual Trends Dashboard



Leading Causes of Death Dashboard

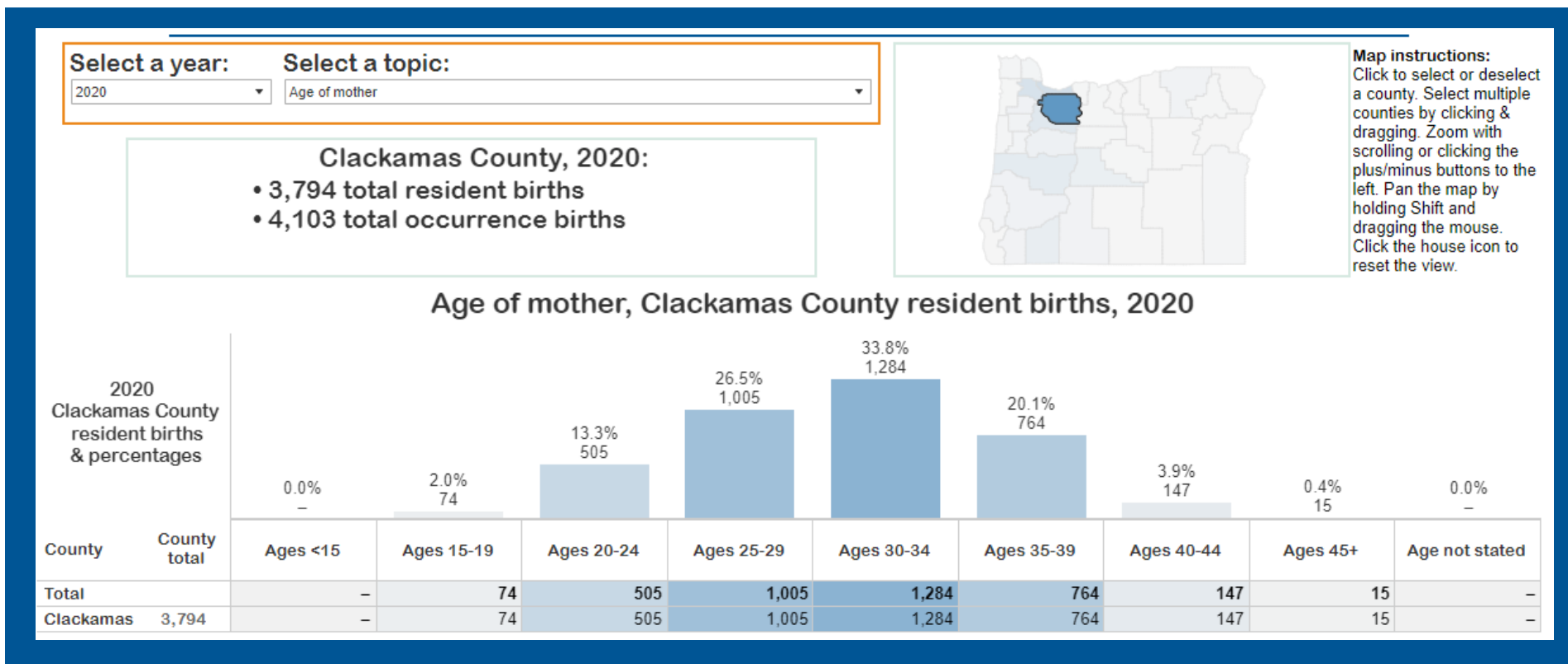


County Death Dashboard



What We Do: Analyze Data from Vital Records

Quarterly and annual statistical reports about various vital records are available in interactive dynamic dashboards.



Oregon Vital Events Registration System – OVERS

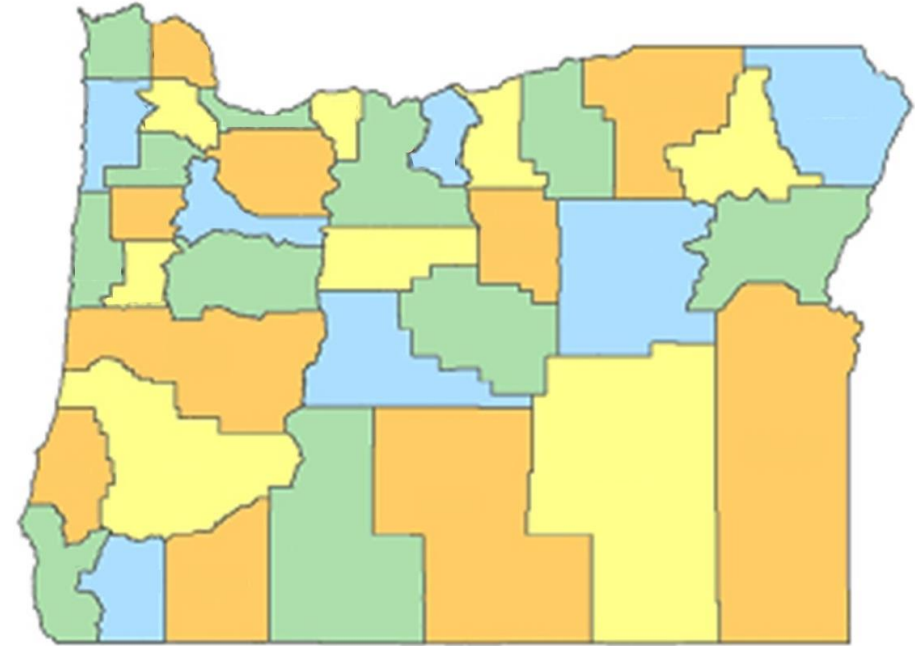
- Approximately 12,000 users
 - State workers
 - Counties
 - Hospitals
 - Birthing centers
 - Funeral homes



What We Do: Support our Partners

CHS Partners

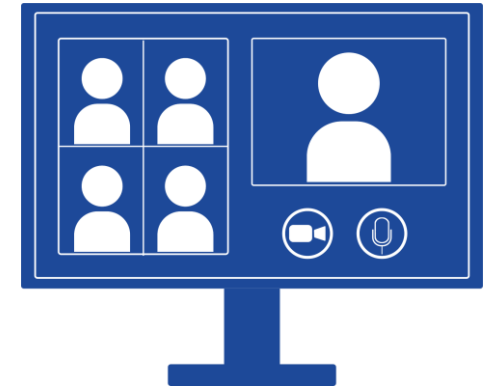
- Counties
- Hospitals / birthing centers
- Funeral directors
- Doctors
- Medical examiners
- County clerks
- Circuit courts
- Tribes



What We Do: Support our Partners

CHS Partner Services

- Monthly newsletters
- County Triennial Reviews
- Trainings
 - OVERS
 - Laws/policies
- Resources for partners
 - Brochures/forms
 - Answer questions





CHS supports modernization by:

- Embracing technology to improve accuracy and timeliness of registering vital records
- Engaging with partners to improve system
- Exploring ways for better ways to provide legal documents and services

Focus On: Health Equity

CHS is working to help meet OHA's goal of ending health inequities by 2030

- Produce better data and reports
- Engage and empower partners
- Promote and develop an innovative, collaborative and engaged workforce

