

# RSV-OREGON

## Oregon's Weekly Respiratory Syncytial Virus Surveillance Report

Oregon Public Health Division/  
Acute & Communicable Disease Prevention Program



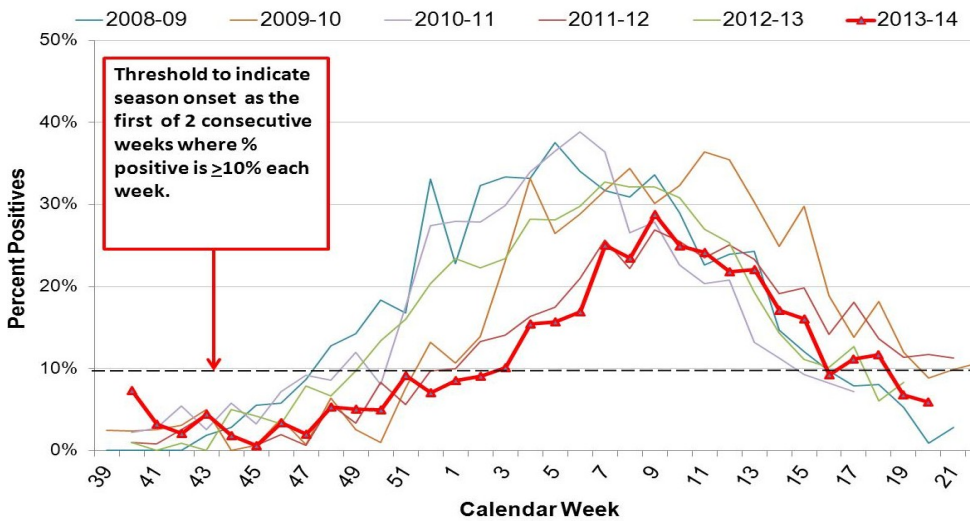
Published May 21, 2014

Week 20: May 11— May 17, 2014				2013 — 2014 Cumulative	
Region	# Labs Detecting RSV	# RSV tests Performed	# RSV tests Positive (%)	# RSV tests Performed	# RSV tests Positive (%)
NW Oregon-SW Washington:	4	137	5 (4%)	8590	1109 (13%)
Central Oregon:	1	8	3 (38%)	455	88 (19%)
Columbia Gorge-NE Oregon:	1	9	2 (22%)	649	88 (14%)
Southern Oregon:	0	15	0 (0%)	967	165 (17%)
<b>Regional Totals:</b>	<b>6 (27%)<sup>1</sup></b>	<b>169</b>	<b>10 (6%)</b>	<b>10624</b>	<b>1450 (14%)</b>

**Week 20<sup>2</sup> data: 10 (6%) tests detected RSV, as reported by all 22 sentinel labs.**

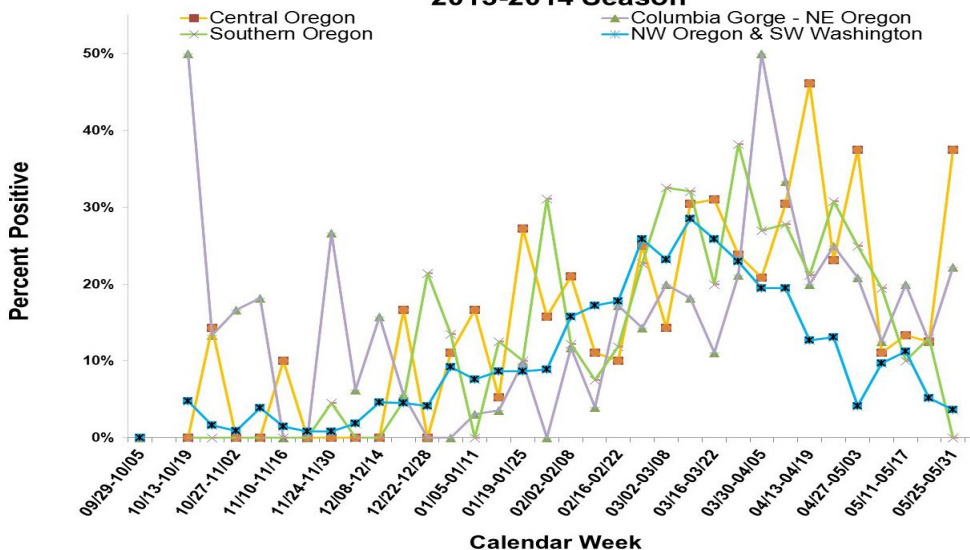
Respiratory Syncytial Virus Surveillance  
Percent Positive RSV by Week  
Oregon and SW Washington,  
2013-2014 Season

<sup>1</sup> Of the labs reporting this week. <sup>2</sup> By definition below, Wk. 20 is RSV Season 2013-14 offset.



2013-14 RSV reporting in Oregon began the week beginning September 29, 2013. Reports may be based upon rapid tests, DFA, cultures and other test types. The test methods used vary from laboratory to laboratory. The total number of tests may not reflect the total number of patients tested. Laboratories reporting to the Oregon Health Authority/PHD now include 22 laboratories in Oregon and SW Washington. Their weekly participation involves reporting the number of RSV tests conducted by their lab and of those, the number testing positive for RSV. For more information regarding Oregon RSV surveillance, please see: <http://public.health.oregon.gov/DiseasesConditions/CommunicableDisease/DiseaseSurveillanceData/Pages/RespiratorySyncytialVirusSurveillanceData.aspx>.

Respiratory Syncytial Virus Surveillance  
Percent Positive RSV by Week and Region  
2013-2014 Season



As defined by CDC, the "RSV season onset is the first of 2 consecutive weeks during which the mean percentage of specimens testing positive for RSV antigen is  $\geq 10\%$ . RSV season offset is the last of 2 consecutive weeks during which the mean percentage of positive specimens is  $< 10\%$ ." This definition has been adapted for our surveillance purposes; data reported in this report include the mean percentage of specimens testing positive by region.

RSV surveillance is also conducted by the National Respiratory and Enteric Virus Surveillance System (NREVSS), with eight Oregon labs reporting passively. Data from that surveillance system is available on CDC's website. NREVSS RSV surveillance: [<http://www.cdc.gov/surveillance/nrevss/rsv/>] (<http://www.cdc.gov/surveillance/nrevss/rsv/default.html>).

# RSV-OREGON

## Oregon's Weekly Respiratory Syncytial Virus Surveillance Report

Oregon Public Health Division/  
Acute & Communicable Disease Program

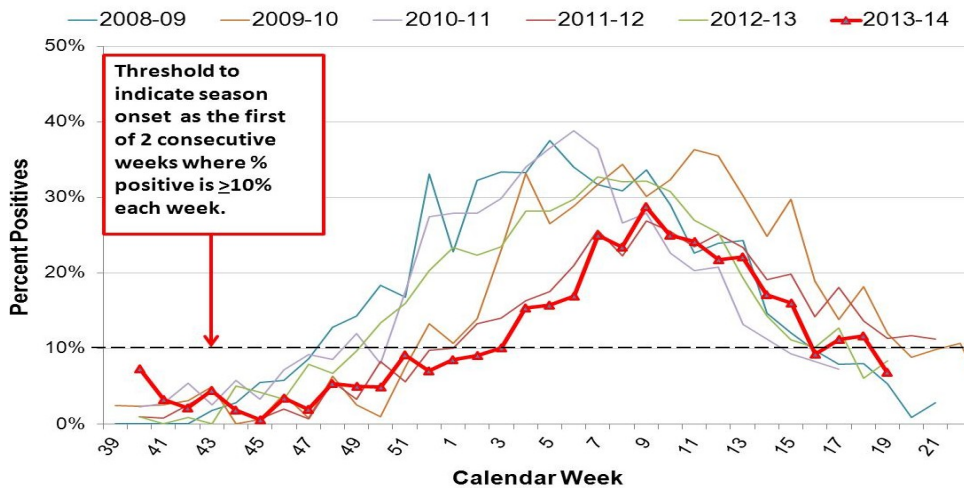


Published May 15, 2014

Week 19: May 04— May 10, 2014				2013 — 2014 Cumulative	
Region	# Labs Detecting RSV	# RSV tests Performed	# RSV tests Positive (%)	# RSV tests Performed	# RSV tests Positive (%)
NW Oregon-SW Washington:	5	173	9 (5%)	8453	1104 (13%)
Central Oregon:	1	8	1 (13%)	447	85 (19%)
Columbia Gorge-NE Oregon:	1	16	2 (13%)	640	86 (13%)
Southern Oregon:	1	23	3 (13%)	952	165 (17%)
<b>Regional Totals:</b>	<b>8 (36%)<sup>1</sup></b>	<b>220</b>	<b>15 (7%)</b>	<b>10492</b>	<b>1440 (14%)</b>

**Week 19 data: 15 (7%) tests detected RSV, as reported by all 22 sentinel labs.**

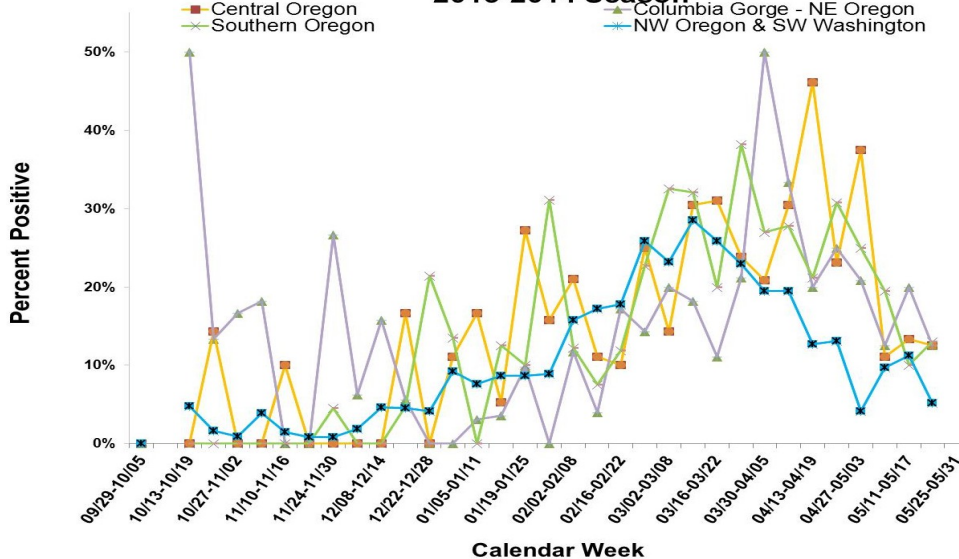
**Respiratory Syncytial Virus Surveillance  
Percent Positive RSV by Week  
Oregon and SW Washington,  
2013-2014 Season**



<sup>1</sup> of the labs reporting this week.

2013-14 RSV reporting in Oregon began the week beginning September 29, 2013. Reports may be based upon rapid tests, DFA, cultures and other test types. The test methods used vary from laboratory to laboratory. The total number of tests may not reflect the total number of patients tested. Laboratories reporting to the Oregon Health Authority/PHD now include 22 laboratories in Oregon and SW Washington. Their weekly participation involves reporting the number of RSV tests conducted by their lab and of those, the number testing positive for RSV. For more information regarding Oregon RSV surveillance, please see: <http://public.health.oregon.gov/DiseasesConditions/CommunicableDisease/DiseaseSurveillanceData/Pages/RespiratorySyncytialVirusSurveillanceData.aspx>.

**Respiratory Syncytial Virus Surveillance  
Percent Positive RSV by Week and Region  
2013-2014 Season**



As defined by CDC, the "RSV season onset is the first of 2 consecutive weeks during which the mean percentage of specimens testing positive for RSV antigen is  $\geq 10\%$ . RSV season offset is the last of 2 consecutive weeks during which the mean percentage of positive specimens is  $< 10\%$ ." This definition has been adapted for our surveillance purposes; data reported in this report include the mean percentage of specimens testing positive by region.

RSV surveillance is also conducted by the National Respiratory and Enteric Virus Surveillance System (NREVSS), with eight Oregon labs reporting passively. Data from that surveillance system is available on CDC's website. NREVSS RSV surveillance: [<http://www.cdc.gov/surveillance/nrevss/rsv/>] (<http://www.cdc.gov/surveillance/nrevss/rsv/default.html>).

# RSV-OREGON

## Oregon's Weekly Respiratory Syncytial Virus Surveillance Report

Oregon Public Health Division/  
Acute & Communicable Disease Program

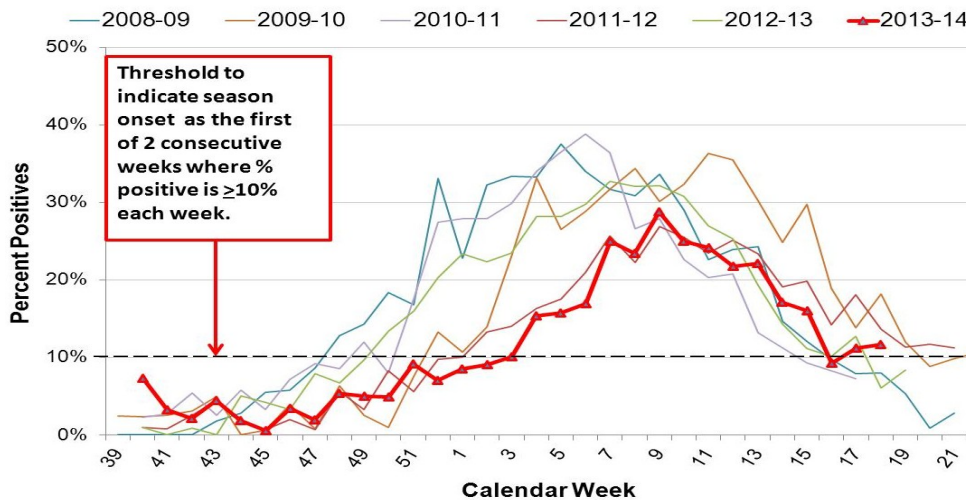


Published May 07, 2014

Week 18: Apr. 30— May 03, 2014				2013 — 2014 Cumulative	
Region	# Labs Detecting RSV	# RSV tests Performed	# RSV tests Positive (%)	# RSV tests Performed	# RSV tests Positive (%)
NW Oregon-SW Washington:	6	169	19 (11%)	8280	1095 (13%)
Central Oregon:	1	15	2 (13%)	439	84 (19%)
Columbia Gorge-NE Oregon:	2	10	2 (20%)	624	84 (13%)
Southern Oregon:	2	20	2 (10%)	929	162 (17%)
<b>Regional Totals:</b>	<b>11 (50%)<sup>1</sup></b>	<b>214</b>	<b>25 (12%)</b>	<b>10272</b>	<b>1425 (14%)</b>

**Week 18 data: 25 (12%) tests detected RSV, as reported by all 22 sentinel labs.**

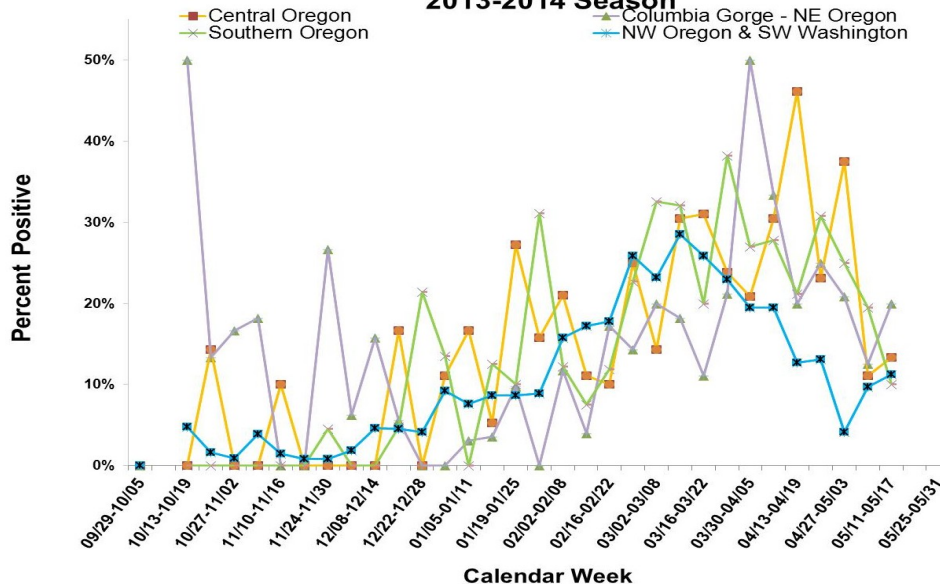
**Respiratory Syncytial Virus Surveillance  
Percent Positive RSV by Week  
Oregon and SW Washington,  
2013-2014 Season**



<sup>1</sup> of the labs reporting this week.

2013-14 RSV reporting in Oregon began the week beginning September 29, 2013. Reports may be based upon rapid tests, DFA, cultures and other test types. The test methods used vary from laboratory to laboratory. The total number of tests may not reflect the total number of patients tested. Laboratories reporting to the Oregon Health Authority/PHD now include 22 laboratories in Oregon and SW Washington. Their weekly participation involves reporting the number of RSV tests conducted by their lab and of those, the number testing positive for RSV. For more information regarding Oregon RSV surveillance, please see: <http://public.health.oregon.gov/DiseasesConditions/CommunicableDisease/DiseaseSurveillanceData/Pages/RespiratorySyncytialVirusSurveillanceData.aspx>.

**Respiratory Syncytial Virus Surveillance  
Percent Positive RSV by Week and Region  
2013-2014 Season**



As defined by CDC, the "RSV season onset is the first of 2 consecutive weeks during which the mean percentage of specimens testing positive for RSV antigen is  $\geq 10\%$ . RSV season offset is the last of 2 consecutive weeks during which the mean percentage of positive specimens is  $< 10\%$ ." This definition has been adapted for our surveillance purposes; data reported in this report include the mean percentage of specimens testing positive by region.

RSV surveillance is also conducted by the National Respiratory and Enteric Virus Surveillance System (NREVSS), with eight Oregon labs reporting passively. Data from that surveillance system is available on CDC's website. NREVSS RSV surveillance: [<http://www.cdc.gov/surveillance/nrevss/rsv/>] (<http://www.cdc.gov/surveillance/nrevss/rsv/default.html>).

# RSV-OREGON

## Oregon's Weekly Respiratory Syncytial Virus Surveillance Report

Oregon Public Health Division/  
Acute & Communicable Disease Program

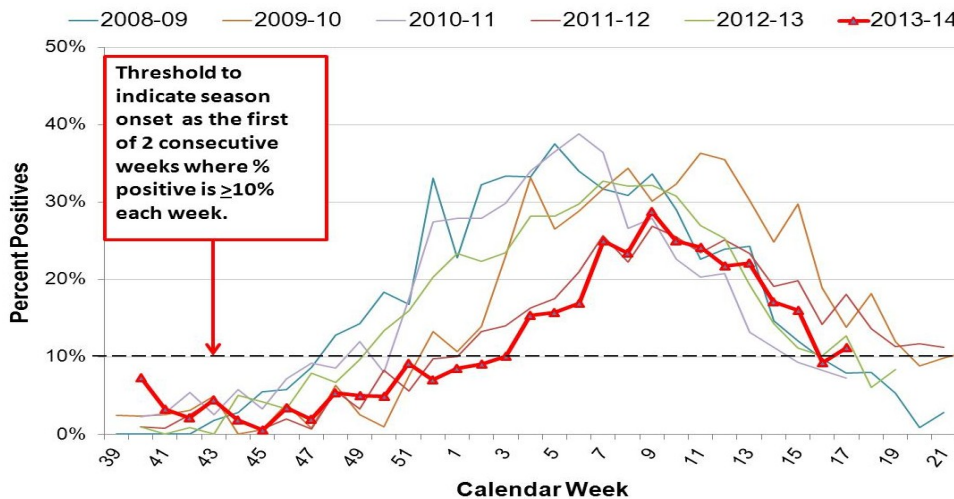


Published April 30, 2014

Week 17: Apr. 20— Apr. 26, 2014				2013 — 2014 Cumulative	
Region	# Labs Detecting RSV	# RSV tests Performed	# RSV tests Positive (%)	# RSV tests Performed	# RSV tests Positive (%)
NW Oregon-SW Washington:	6	226	22 (10%)	8111	1076 (13%)
Central Oregon:	1	9	1 (11%)	424	82 (19%)
Columbia Gorge-NE Oregon:	2	16	2 (13%)	614	82 (13%)
Southern Oregon:	2	36	7 (19%)	909	160 (18%)
<b>Regional Totals:</b>	<b>11 (50%)<sup>1</sup></b>	<b>287</b>	<b>32 (11%)</b>	<b>10058</b>	<b>1400 (14%)</b>

**Week 17 data: 32 (11%) tests detected RSV, as reported by all 22 sentinel labs.**

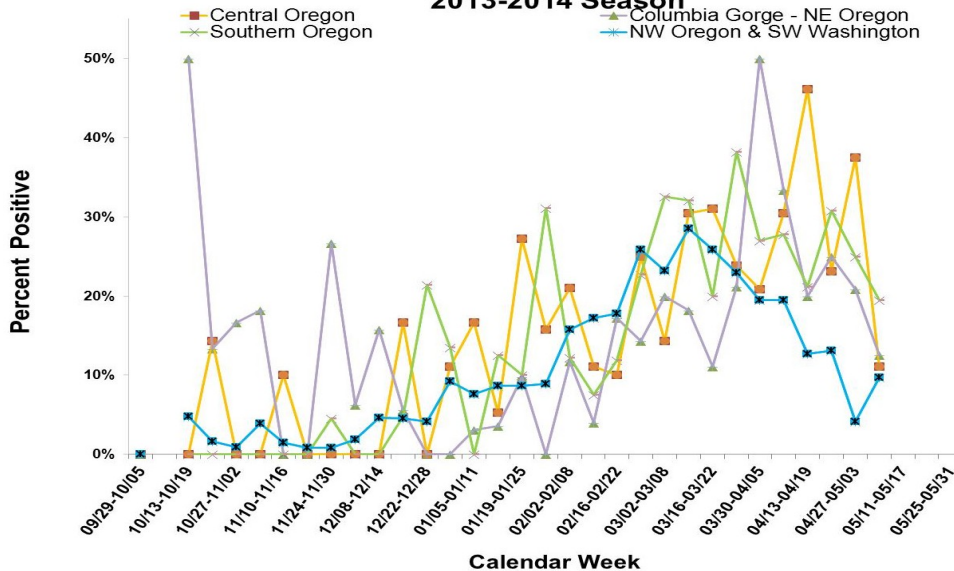
**Respiratory Syncytial Virus Surveillance  
Percent Positive RSV by Week  
Oregon and SW Washington,  
2013-2014 Season**



<sup>1</sup> of the labs reporting this week.

2013-14 RSV reporting in Oregon began the week beginning September 29, 2013. Reports may be based upon rapid tests, DFA, cultures and other test types. The test methods used vary from laboratory to laboratory. The total number of tests may not reflect the total number of patients tested. Laboratories reporting to the Oregon Health Authority/PHD now include 22 laboratories in Oregon and SW Washington. Their weekly participation involves reporting the number of RSV tests conducted by their lab and of those, the number testing positive for RSV. For more information regarding Oregon RSV surveillance, please see: <http://public.health.oregon.gov/DiseasesConditions/CommunicableDisease/DiseaseSurveillanceData/Pages/RespiratorySyncytialVirusSurveillanceData.aspx>.

**Respiratory Syncytial Virus Surveillance  
Percent Positive RSV by Week and Region  
2013-2014 Season**



As defined by CDC, the "RSV season onset is the first of 2 consecutive weeks during which the mean percentage of specimens testing positive for RSV antigen is  $\geq 10\%$ . RSV season offset is the last of 2 consecutive weeks during which the mean percentage of positive specimens is  $< 10\%$ ." This definition has been adapted for our surveillance purposes; data reported in this report include the mean percentage of specimens testing positive by region.

RSV surveillance is also conducted by the National Respiratory and Enteric Virus Surveillance System (NREVSS), with eight Oregon labs reporting passively. Data from that surveillance system is available on CDC's website. NREVSS RSV surveillance: [<http://www.cdc.gov/surveillance/nrevss/rsv/>] (<http://www.cdc.gov/surveillance/nrevss/rsv/default.html>).

# RSV-OREGON

## Oregon's Weekly Respiratory Syncytial Virus Surveillance Report

Oregon Public Health Division/  
Acute & Communicable Disease Program



Published April 23, 2014

Week 16: Apr. 13— Apr. 19, 2014				2013 — 2014 Cumulative	
Region	# Labs Detecting RSV	# RSV tests Performed	# RSV tests Positive (%)	# RSV tests Performed	# RSV tests Positive (%)
NW Oregon-SW Washington:	3	195	8 (4%)	7885	1054 (13%)
Central Oregon:	1	8	3 (38%)	415	81 (20%)
Columbia Gorge-NE Oregon:	2	24	5 (21%)	598	80 (13%)
Southern Oregon:	4	32	8 (25%)	873	153 (18%)
<b>Regional Totals:</b>	<b>10 (48%)<sup>1</sup></b>	<b>259</b>	<b>24 (9%)<sup>2</sup></b>	<b>9771</b>	<b>1368 (14%)</b>

**Week 16 data: 24 (9%) tests detected RSV, as reported by all 22 sentinel labs.**

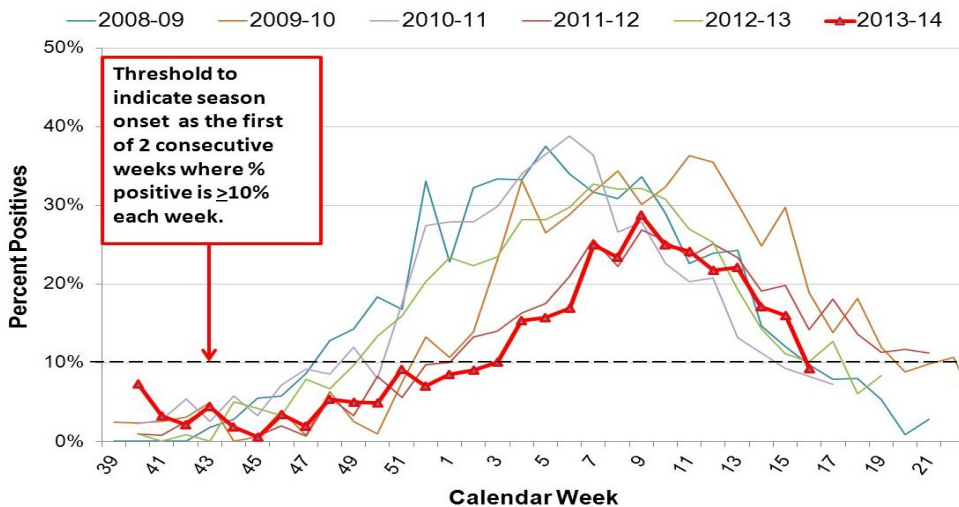
**Respiratory Syncytial Virus Surveillance  
Percent Positive RSV by Week  
Oregon and SW Washington,  
2013-2014 Season**

<sup>1</sup> of the labs reporting; <sup>2</sup> by definition, seasonal onset was Week 03-2014.

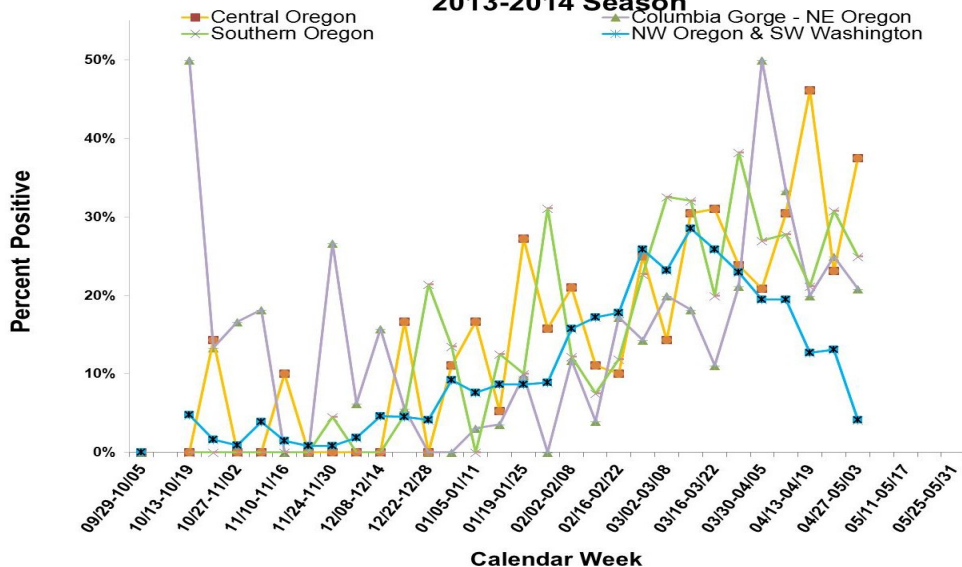
2013-14 RSV reporting in Oregon began the week beginning September 29, 2013. Reports may be based upon rapid tests, DFA, cultures and other test types. The test methods used vary from laboratory to laboratory. The total number of tests may not reflect the total number of patients tested. Laboratories reporting to the Oregon Health Authority/PHD now include 22 laboratories in Oregon and SW Washington. Their weekly participation involves reporting the number of RSV tests conducted by their lab and of those, the number testing positive for RSV. For more information regarding Oregon RSV surveillance, please see: <http://public.health.oregon.gov/DiseasesConditions/CommunicableDisease/DiseaseSurveillanceData/Pages/RespiratorySyncytialVirusSurveillanceData.aspx>.

As defined by CDC, the "RSV season onset is the first of 2 consecutive weeks during which the mean percentage of specimens testing positive for RSV antigen is  $\geq 10\%$ . RSV season offset is the last of 2 consecutive weeks during which the mean percentage of positive specimens is  $< 10\%$ ." This definition has been adapted for our surveillance purposes; data reported in this report include the mean percentage of specimens testing positive by region.

RSV surveillance is also conducted by the National Respiratory and Enteric Virus Surveillance System (NREVSS), with eight Oregon labs reporting passively. Data from that surveillance system is available on CDC's website. NREVSS RSV surveillance: [<http://www.cdc.gov/surveillance/nrevss/rsv/>] (<http://www.cdc.gov/surveillance/nrevss/rsv/default.html>).



**Respiratory Syncytial Virus Surveillance  
Percent Positive RSV by Week and Region  
2013-2014 Season**



# RSV-OREGON

## Oregon's Weekly Respiratory Syncytial Virus Surveillance Report

Oregon Public Health Division/  
Acute & Communicable Disease Program



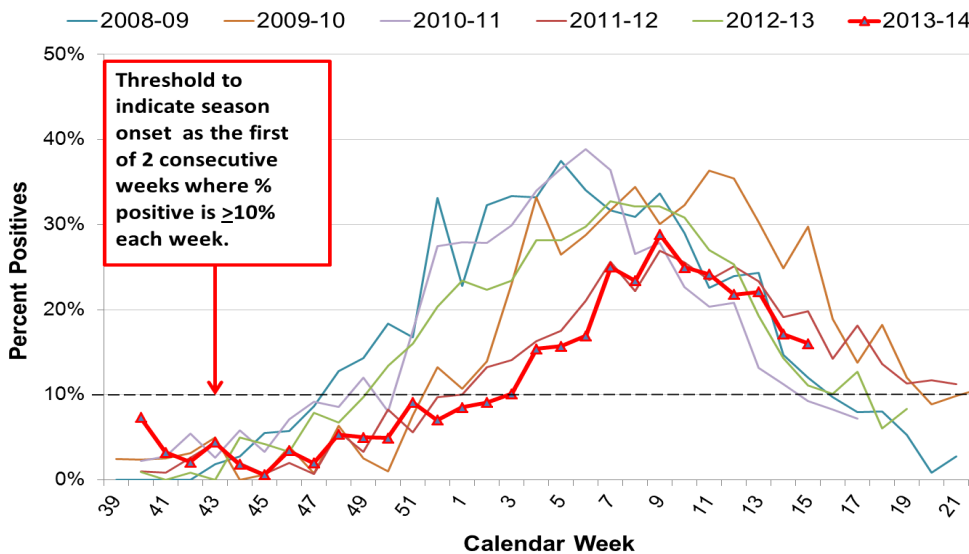
Published April 16, 2014

Week 15: Apr. 06— Apr. 12, 2014				2013 — 2014 Cumulative	
Region	# Labs Detecting RSV	# RSV tests Performed	# RSV tests Positive (%)	# RSV tests Performed	# RSV tests Positive (%)
NW Oregon-SW Washington:	7	199	26 (13%)	7690	1046 (14%)
Central Oregon:	2	13	3 (23%)	407	78 (19%)
Columbia Gorge-NE Oregon:	3	12	3 (25%)	574	75 (13%)
Southern Oregon:	4	26	8 (31%)	841	145 (17%)
<b>Regional Totals:</b>	<b>16 (73%)<sup>1</sup></b>	<b>250</b>	<b>40 (16%)<sup>2</sup></b>	<b>9512</b>	<b>1344 (14%)</b>

**Week 15 data: 40 (16%) tests detected RSV, as reported by all 22 sentinel labs.**

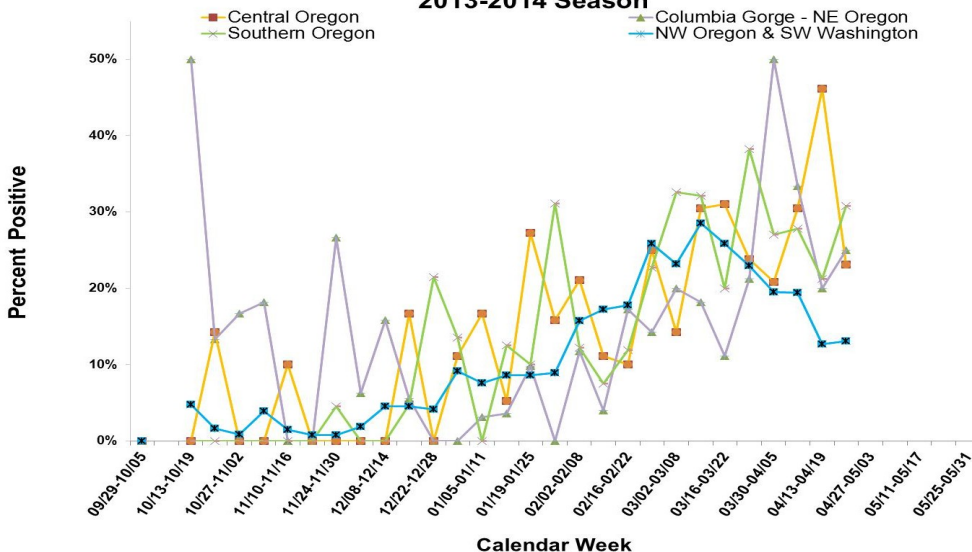
Oregon and SW Washington,  
2013-2014 Season

<sup>1</sup> of the labs reporting; <sup>2</sup> by definition, seasonal onset was Week 03-2014.



2013-14 RSV reporting in Oregon began the week beginning September 29, 2013. Reports may be based upon rapid tests, DFA, cultures and other test types. The test methods used vary from laboratory to laboratory. The total number of tests may not reflect the total number of patients tested. Laboratories reporting to the Oregon Health Authority/PHD now include 22 laboratories in Oregon and SW Washington. Their weekly participation involves reporting the number of RSV tests conducted by their lab and of those, the number testing positive for RSV. For more information regarding Oregon RSV surveillance, please see: <http://public.health.oregon.gov/DiseasesConditions/CommunicableDisease/DiseaseSurveillanceData/Pages/RespiratorySyncytialVirusSurveillanceData.aspx>.

Respiratory Syncytial Virus Surveillance  
Percent Positive RSV by Week and Region  
2013-2014 Season



As defined by CDC, the "RSV season onset is the first of 2 consecutive weeks during which the mean percentage of specimens testing positive for RSV antigen is  $\geq 10\%$ . RSV season offset is the last of 2 consecutive weeks during which the mean percentage of positive specimens is  $< 10\%$ ." This definition has been adapted for our surveillance purposes; data reported in this report include the mean percentage of specimens testing positive by region.

RSV surveillance is also conducted by the National Respiratory and Enteric Virus Surveillance System (NREVSS), with eight Oregon labs reporting passively. Data from that surveillance system is available on CDC's website. NREVSS RSV surveillance: [<http://www.cdc.gov/surveillance/nrevss/rsv/>] (<http://www.cdc.gov/surveillance/nrevss/rsv/default.html>).

# RSV-OREGON

## Oregon's Weekly Respiratory Syncytial Virus Surveillance Report

Oregon Public Health Division/  
Acute & Communicable Disease Program

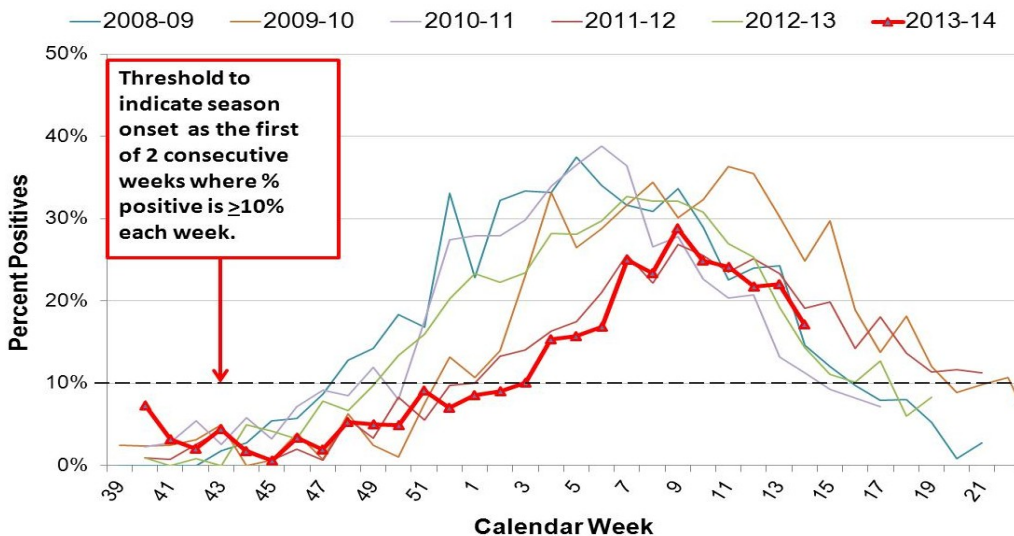


Published April 09, 2014

Week 14: Mar. 30— Apr. 5, 2014				2013 — 2014 Cumulative	
Region	# Labs Detecting RSV	# RSV tests Performed	# RSV tests Positive (%)	# RSV tests Performed	# RSV tests Positive (%)
NW Oregon-SW Washington:	6	213	27 (13%)	7491	1020 (14%)
Central Oregon:	1	26	12 (46%)	394	75 (17%)
Columbia Gorge-NE Oregon:	2	20	4 (20%)	562	72 (13%)
Southern Oregon:	4	33	7 (21%)	815	137(17%)
<b>Regional Totals:</b>	<b>13 (59%)<sup>1</sup></b>	<b>292</b>	<b>50 (17%)<sup>2</sup></b>	<b>9262</b>	<b>1304 (14%)</b>

**Week 14 data: 50 (17%) tests detected RSV, as reported by all 22 sentinel labs.**

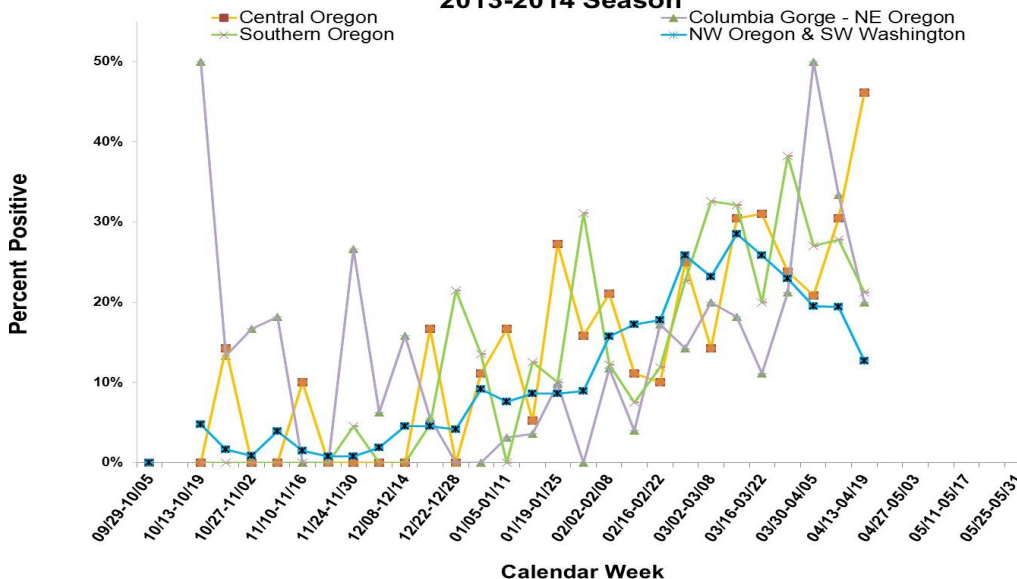
**Oregon and SW Washington,  
2013-2014 Season**



<sup>1</sup> of the labs reporting; <sup>2</sup> by definition, seasonal onset was Week 03-2014.

2013-14 RSV reporting in Oregon began the week beginning September 29, 2013. Reports may be based upon rapid tests, DFA, cultures and other test types. The test methods used vary from laboratory to laboratory. The total number of tests may not reflect the total number of patients tested. Laboratories reporting to the Oregon Health Authority/PHD now include 22 laboratories in Oregon and SW Washington. Their weekly participation involves reporting the number of RSV tests conducted by their lab and of those, the number testing positive for RSV. For more information regarding Oregon RSV surveillance, please see: <http://public.health.oregon.gov/DiseasesConditions/CommunicableDisease/DiseaseSurveillanceData/Pages/RespiratorySyncytialVirusSurveillanceData.aspx>.

**Respiratory Syncytial Virus Surveillance  
Percent Positive RSV by Week and Region  
2013-2014 Season**



As defined by CDC, the "RSV season onset is the first of 2 consecutive weeks during which the mean percentage of specimens testing positive for RSV antigen is  $\geq 10\%$ . RSV season offset is the last of 2 consecutive weeks during which the mean percentage of positive specimens is  $< 10\%$ ." This definition has been adapted for our surveillance purposes; data reported in this report include the mean percentage of specimens testing positive by region.

RSV surveillance is also conducted by the National Respiratory and Enteric Virus Surveillance System (NREVSS), with eight Oregon labs reporting passively. Data from that surveillance system is available on CDC's website. NREVSS RSV surveillance: [<http://www.cdc.gov/surveillance/nrevss/rsv/>] (<http://www.cdc.gov/surveillance/nrevss/rsv/default.html>).

# RSV-OREGON

## Oregon's Weekly Respiratory Syncytial Virus Surveillance Report

Oregon Public Health Division/  
Acute & Communicable Disease Program

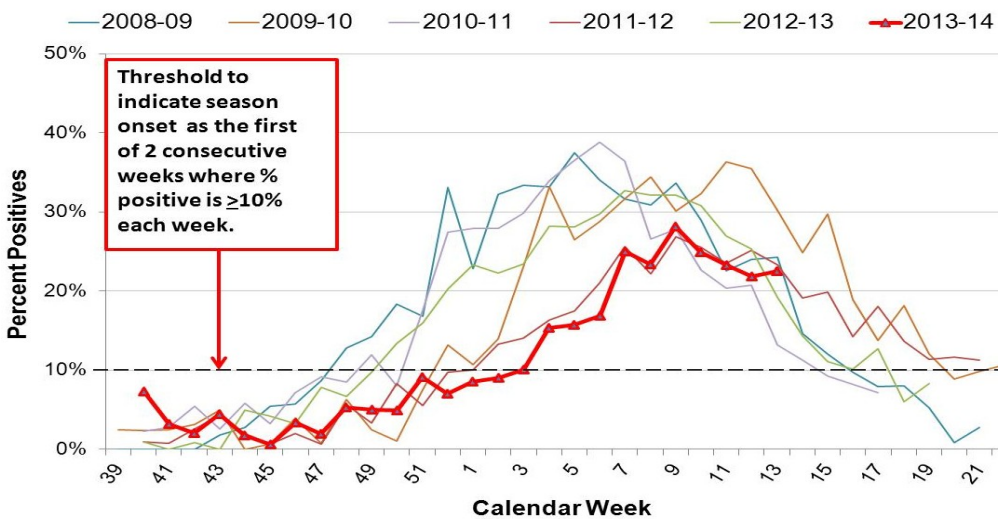


Published April 01, 2014

Week 13: Mar. 23— 29, 2014				2013 — 2014 Cumulative	
Region	# Labs Detecting RSV	# RSV tests Performed	# RSV tests Positive (%)	# RSV tests Performed	# RSV tests Positive (%)
NW Oregon-SW Washington:	7	255	51 (20%)	7273	987 (14%)
Central Oregon:	1	23	7 (30%)	368	63 (17%)
Columbia Gorge-NE Oregon:	3	24	8 (33%)	542	68 (13%)
Southern Oregon:	4	36	10 (28%)	782	130 (17%)
<b>Regional Totals:</b>	<b>15 (68%)<sup>1</sup></b>	<b>338</b>	<b>76 (22%)<sup>2</sup></b>	<b>8965</b>	<b>1248 (14%)</b>

**Week 13 data: 76 (22%) tests detected RSV, as reported by all 22 sentinel labs.**

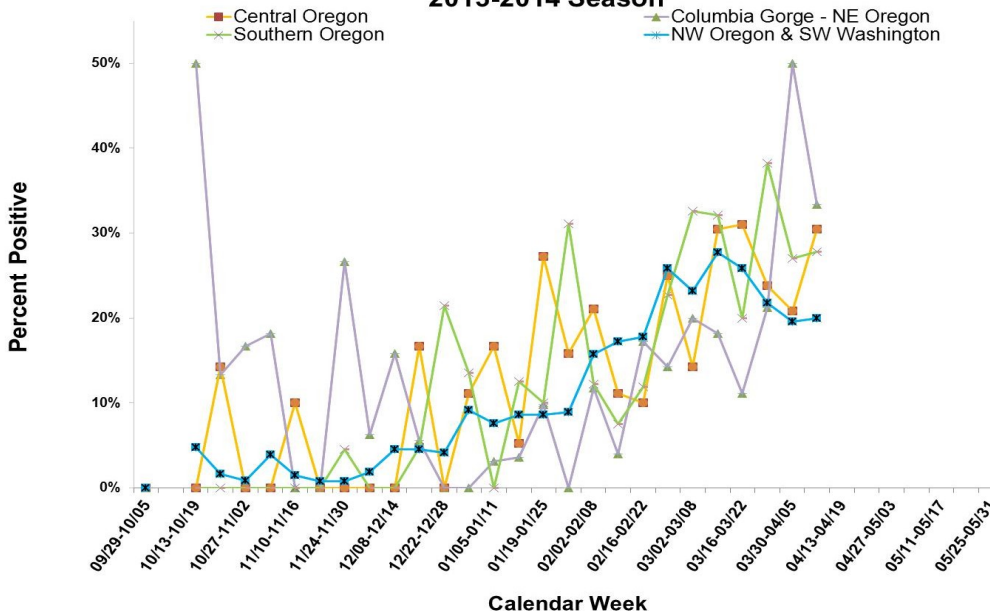
Oregon and SW Washington, 2013-2014 Season



<sup>1</sup> of the labs reporting; <sup>2</sup> by definition, seasonal onset was Week 03-2014.

2013-14 RSV reporting in Oregon began the week beginning September 29, 2013. Reports may be based upon rapid tests, DFA, cultures and other test types. The test methods used vary from laboratory to laboratory. The total number of tests may not reflect the total number of patients tested. Laboratories reporting to the Oregon Health Authority/PHD now include 22 laboratories in Oregon and SW Washington. Their weekly participation involves reporting the number of RSV tests conducted by their lab and of those, the number testing positive for RSV. For more information regarding Oregon RSV surveillance, please see: <http://public.health.oregon.gov/DiseasesConditions/CommunicableDisease/DiseaseSurveillanceData/Pages/RespiratorySyncytialVirusSurveillanceData.aspx>.

Respiratory Syncytial Virus Surveillance  
Percent Positive RSV by Week and Region  
2013-2014 Season



As defined by CDC, the "RSV season onset is the first of 2 consecutive weeks during which the mean percentage of specimens testing positive for RSV antigen is  $\geq 10\%$ . RSV season offset is the last of 2 consecutive weeks during which the mean percentage of positive specimens is  $< 10\%$ ." This definition has been adapted for our surveillance purposes; data reported in this report include the mean percentage of specimens testing positive by region.

RSV surveillance is also conducted by the National Respiratory and Enteric Virus Surveillance System (NREVSS), with eight Oregon labs reporting passively. Data from that surveillance system is available on CDC's website. NREVSS RSV surveillance: [<http://www.cdc.gov/surveillance/nrevss/rsv/>] (<http://www.cdc.gov/surveillance/nrevss/rsv/default.html>).



# RSV-OREGON

## Oregon's Weekly Respiratory Syncytial Virus Surveillance Report

Oregon Public Health Division/  
Acute & Communicable Disease Program

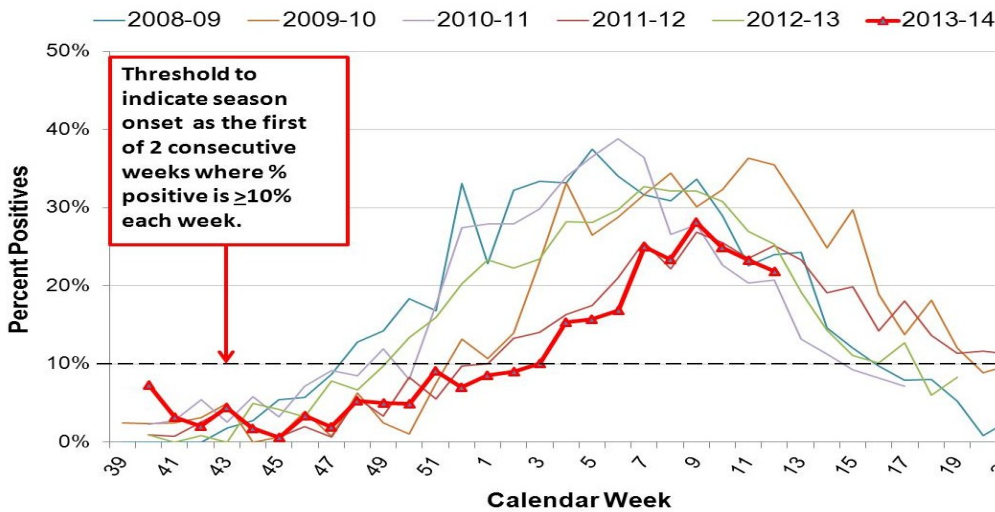


Published March 26, 2014

Week 12: Mar. 16— 22, 2014				2013 — 2014 Cumulative	
Region	# Labs Detecting RSV	# RSV tests Performed	# RSV tests Positive (%)	# RSV tests Performed	# RSV tests Positive (%)
NW Oregon-SW Washington:	8	271	53 (20%)	7018	936 (13%)
Central Oregon:	1	24	5 (21%)	345	56 (16%)
Columbia Gorge-NE Oregon:	3	16	8 (50%)	518	60 (12%)
Southern Oregon:	4	37	10 (27%)	746	120 (16%)
<b>Regional Totals:</b>	<b>16 (73%)<sup>1</sup></b>	<b>348</b>	<b>76 (22%)<sup>2</sup></b>	<b>8627</b>	<b>1172 (14%)</b>

**Week 12 data: 76 (22%) tests detected RSV, as reported by all 22 sentinel labs.**

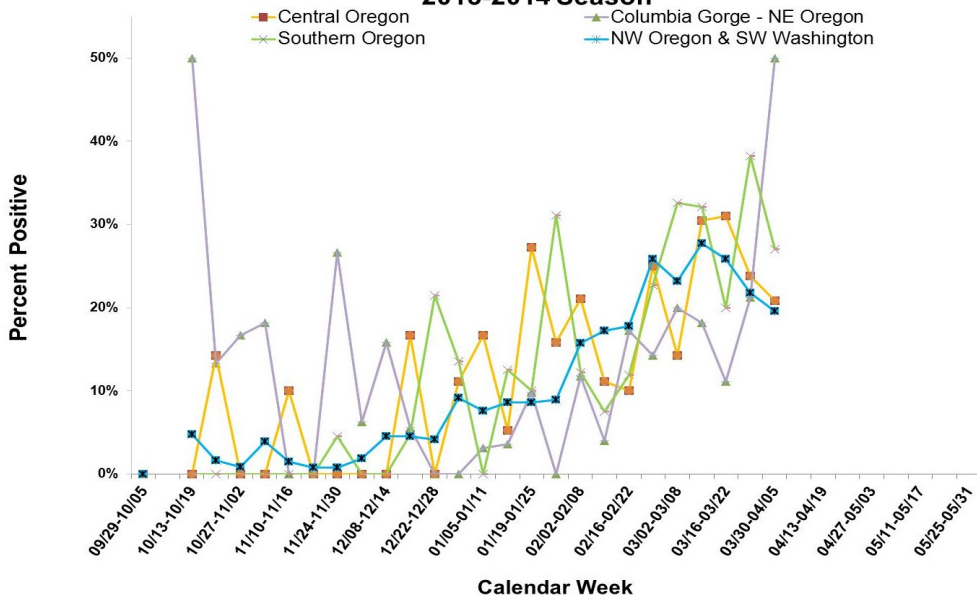
**Oregon and SW Washington, 2013-2014 Season**



<sup>1</sup> of the labs reporting; <sup>2</sup> by definition, seasonal onset was Week 03-2014.

2013-14 RSV reporting in Oregon began the week beginning September 29, 2013. Reports may be based upon rapid tests, DFA, cultures and other test types. The test methods used vary from laboratory to laboratory. The total number of tests may not reflect the total number of patients tested. Laboratories reporting to the Oregon Health Authority/PHD now include 22 laboratories in Oregon and SW Washington. Their weekly participation involves reporting the number of RSV tests conducted by their lab and of those, the number testing positive for RSV. For more information regarding Oregon RSV surveillance, please see: <http://public.health.oregon.gov/DiseasesConditions/CommunicableDisease/DiseaseSurveillanceData/Pages/RespiratorySyncytialVirusSurveillanceData.aspx>.

**Respiratory Syncytial Virus Surveillance  
Percent Positive RSV by Week and Region  
2013-2014 Season**



As defined by CDC, the "RSV season onset is the first of 2 consecutive weeks during which the mean percentage of specimens testing positive for RSV antigen is  $\geq 10\%$ . RSV season offset is the last of 2 consecutive weeks during which the mean percentage of positive specimens is  $< 10\%$ ." This definition has been adapted for our surveillance purposes; data reported in this report include the mean percentage of specimens testing positive by region.

RSV surveillance is also conducted by the National Respiratory and Enteric Virus Surveillance System (NREVSS), with eight Oregon labs reporting passively. Data from that surveillance system is available on CDC's website. NREVSS RSV surveillance: [<http://www.cdc.gov/surveillance/nrevss/rsv/>] (<http://www.cdc.gov/surveillance/nrevss/rsv/default.html>).

# RSV-OREGON

## Oregon's Weekly Respiratory Syncytial Virus Surveillance Report

Oregon Public Health Division/  
Acute & Communicable Disease Program

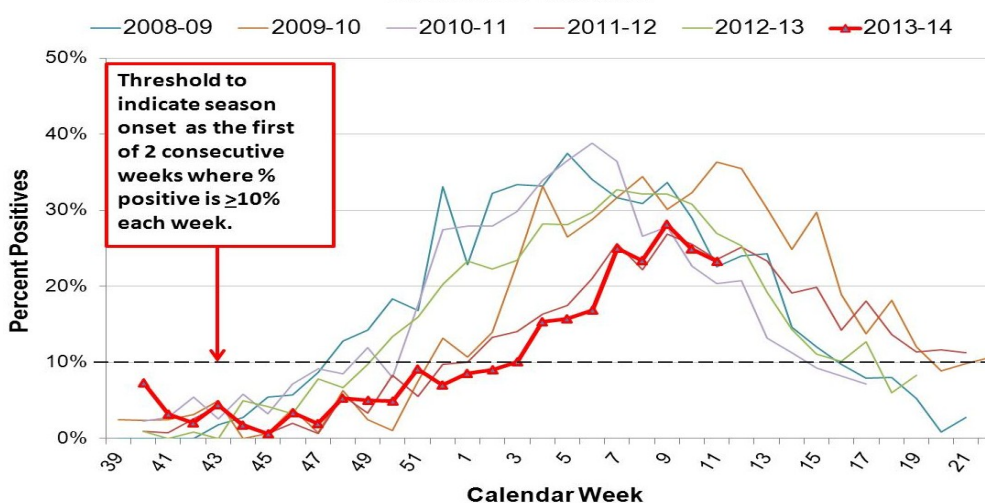


Published March 19, 2014

Week 11: Mar. 09— 15, 2014				2013 — 2014 Cumulative	
Region	# Labs Detecting RSV	# RSV tests Performed	# RSV tests Positive (%)	# RSV tests Performed	# RSV tests Positive (%)
NW Oregon-SW Washington:	9	299	65 (22%)	6747	883 (13%)
Central Oregon:	1	21	5 (24%)	321	51 (16%)
Columbia Gorge-NE Oregon:	2	33	7 (21%)	502	52 (10%)
Southern Oregon:	5	34	13 (38%)	709	110 (16%)
<b>Regional Totals:</b>	<b>17(77%)<sup>1</sup></b>	<b>387</b>	<b>90 (23%)<sup>2</sup></b>	<b>8279</b>	<b>1096 (13%)</b>

**Week 11 data: 90(23%) tests detected RSV, as reported by all 22 sentinel labs.**

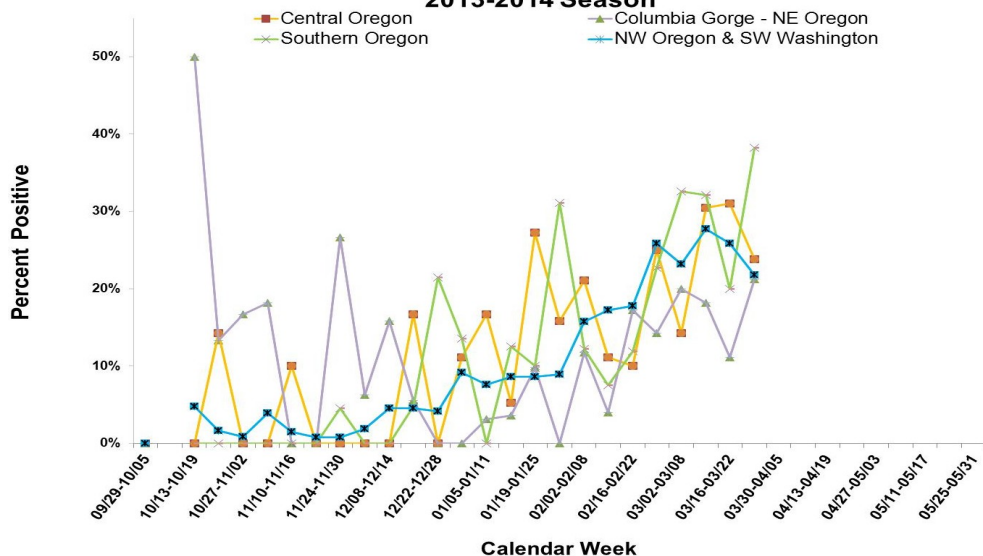
**Respiratory Syncytial Virus Surveillance  
Percent Positive RSV by Week  
Oregon and SW Washington,  
2013-2014 Season**



<sup>1</sup> of the labs reporting; <sup>2</sup> by definition, seasonal onset was Week 03-2014.

2013-14 RSV reporting in Oregon began the week beginning September 29, 2013. Reports may be based upon rapid tests, DFA, cultures and other test types. The test methods used vary from laboratory to laboratory. The total number of tests may not reflect the total number of patients tested. Laboratories reporting to the Oregon Health Authority/PHD now include 22 laboratories in Oregon and SW Washington. Their weekly participation involves reporting the number of RSV tests conducted by their lab and of those, the number testing positive for RSV. For more information regarding Oregon RSV surveillance, please see: <http://public.health.oregon.gov/DiseasesConditions/CommunicableDisease/DiseaseSurveillanceData/Pages/RespiratorySyncytialVirusSurveillanceData.aspx>.

**Respiratory Syncytial Virus Surveillance  
Percent Positive RSV by Week and Region  
2013-2014 Season**



As defined by CDC, the "RSV season onset is the first of 2 consecutive weeks during which the mean percentage of specimens testing positive for RSV antigen is  $\geq 10\%$ . RSV season offset is the last of 2 consecutive weeks during which the mean percentage of positive specimens is  $< 10\%$ ." This definition has been adapted for our surveillance purposes; data reported in this report include the mean percentage of specimens testing positive by region.

RSV surveillance is also conducted by the National Respiratory and Enteric Virus Surveillance System (NREVSS), with eight Oregon labs reporting passively. Data from that surveillance system is available on CDC's website. NREVSS RSV surveillance: [<http://www.cdc.gov/surveillance/nrevss/rsv/>] (<http://www.cdc.gov/surveillance/nrevss/rsv/default.html>).

# RSV-OREGON

## Oregon's Weekly Respiratory Syncytial Virus Surveillance Report

Oregon Public Health Division/  
Acute & Communicable Disease Program

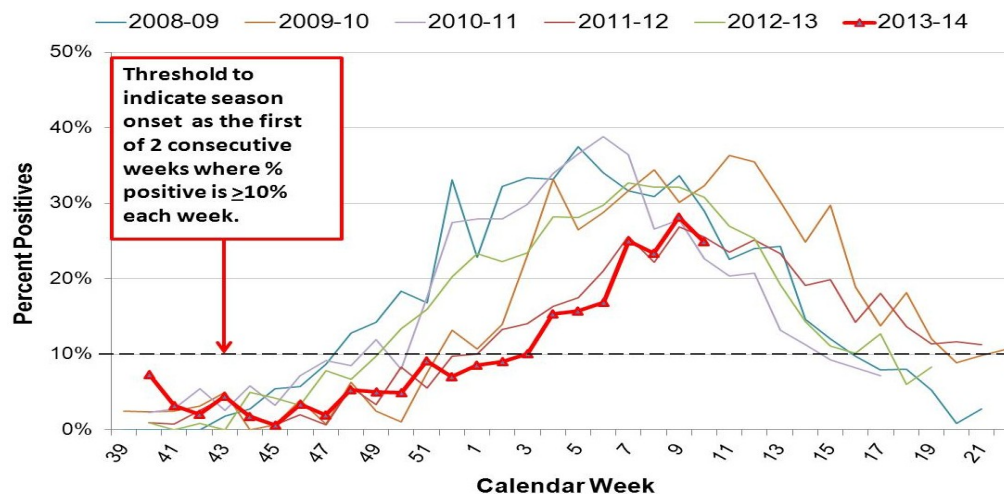


Published March 12, 2014

Week 10: Mar. 02— 08, 2014				2013 — 2014 Cumulative	
Region	# Labs Detecting RSV	# RSV tests Performed	# RSV tests Positive (%)	# RSV tests Performed	# RSV tests Positive (%)
NW Oregon-SW Washington:	9	360	93 (26%)	6448	818 (13%)
Central Oregon:	1	29	9 (31%)	300	46 (15%)
Columbia Gorge-NE Oregon:	2	18	2 (11%)	469	45 (10%)
Southern Oregon:	5	50	10 (20%)	675	97 (14%)
<b>Regional Totals:</b>	<b>17 (77)<sup>1</sup></b>	<b>457</b>	<b>114 (25)<sup>2</sup></b>	<b>7892</b>	<b>1006 (13%)</b>

**Week 10 data: 114 (25%) tests detected RSV, as reported by all 22 sentinel labs.**

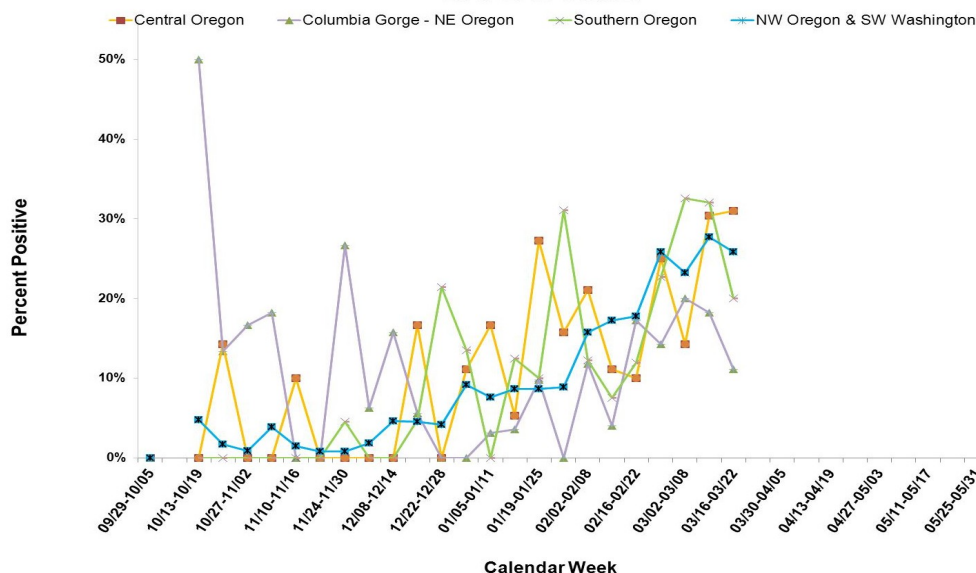
**Respiratory Syncytial Virus Surveillance  
Percent Positive RSV by Week  
Oregon and SW Washington,  
2013-2014 Season**



<sup>1</sup> of the labs reporting; <sup>2</sup> by definition, seasonal onset was Week 03-2014.

2013-14 RSV reporting in Oregon began the week beginning September 29, 2013. Reports may be based upon rapid tests, DFA, cultures and other test types. The test methods used vary from laboratory to laboratory. The total number of tests may not reflect the total number of patients tested. Laboratories reporting to the Oregon Health Authority/PHD now include 22 laboratories in Oregon and SW Washington. Their weekly participation involves reporting the number of RSV tests conducted by their lab and of those, the number testing positive for RSV. For more information regarding Oregon RSV surveillance, please see: <http://public.health.oregon.gov/DiseasesConditions/CommunicableDisease/DiseaseSurveillanceData/Pages/RespiratorySyncytialVirusSurveillanceData.aspx>.

**Respiratory Syncytial Virus Surveillance  
Percent Positive RSV by Week and Region  
2013-2014 Season**



As defined by CDC, the "RSV season onset is the first of 2 consecutive weeks during which the mean percentage of specimens testing positive for RSV antigen is  $\geq 10\%$ . RSV season offset is the last of 2 consecutive weeks during which the mean percentage of positive specimens is  $< 10\%$ ." This definition has been adapted for our surveillance purposes; data reported in this report include the mean percentage of specimens testing positive by region.

RSV surveillance is also conducted by the National Respiratory and Enteric Virus Surveillance System (NREVSS), with eight Oregon labs reporting passively. Data from that surveillance system is available on CDC's website. NREVSS RSV surveillance: [<http://www.cdc.gov/surveillance/nrevss/rsv/>] (<http://www.cdc.gov/surveillance/nrevss/rsv/default.html>).

# RSV-OREGON

## Oregon's Weekly Respiratory Syncytial Virus Surveillance Report

Oregon Public Health Division/  
Acute & Communicable Disease Program



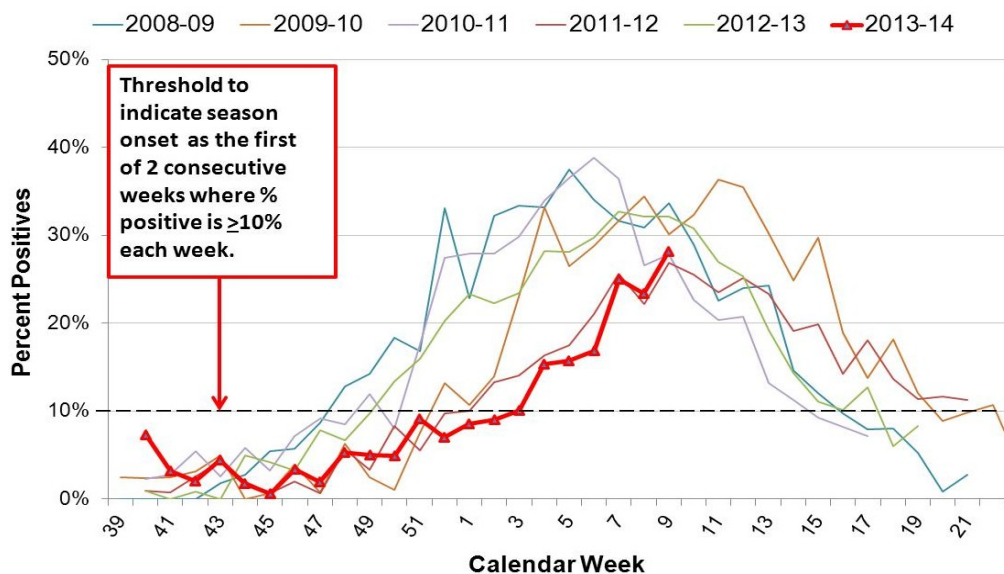
Published March 05, 2014

Week 09: Feb. 23— Mar. 01, 2014				2013 — 2014 Cumulative	
Region	# Labs Detecting RSV	# RSV tests Performed	# RSV tests Positive (%)	# RSV tests Performed	# RSV tests Positive (%)
NW Oregon-SW Washington:	8	328	91 (28%)	6088	725 (12%)
Central Oregon:	1	23	7 (30%)	271	37 (14%)
Columbia Gorge-NE Oregon:	1	11	2 (18%)	451	43 (10%)
Southern Oregon:	6	53	17 (32%)	625	87 (14%)
<b>Regional Totals:</b>	<b>16 (76%)<sup>1</sup></b>	<b>415</b>	<b>117 (28%)<sup>2</sup></b>	<b>7435</b>	<b>892 (12%)</b>

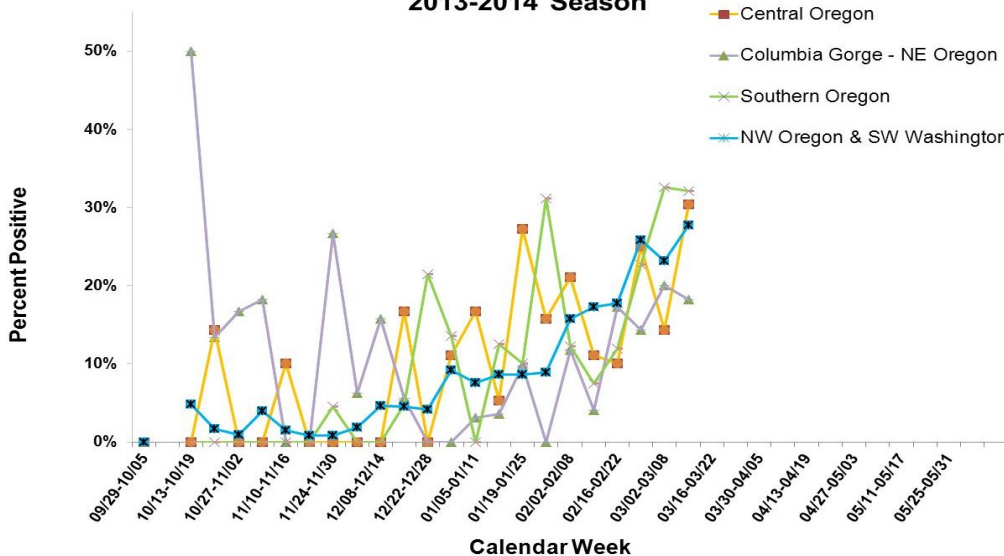
**Week 09 data: 117 (28%) tests detected RSV, as reported by 21 of 22 sentinel labs.**

### Oregon and SW Washington, 2013-2014 Season

<sup>1</sup> of the labs reporting; <sup>2</sup> by definition, seasonal onset was Week 03-2014.



### Respiratory Syncytial Virus Surveillance Percent Positive RSV by Week and Region 2013-2014 Season



2013-14 RSV reporting in Oregon began the week beginning September 29, 2013. Reports may be based upon rapid tests, DFA, cultures and other test types. The test methods used vary from laboratory to laboratory. The total number of tests may not reflect the total number of patients tested. Laboratories reporting to the Oregon Health Authority/PHD now include 22 laboratories in Oregon and SW Washington. Their weekly participation involves reporting the number of RSV tests conducted by their lab and of those, the number testing positive for RSV. For more information regarding Oregon RSV surveillance, please see: <http://public.health.oregon.gov/DiseasesConditions/CommunicableDisease/DiseaseSurveillanceData/Pages/RespiratorySyncytialVirusSurveillanceData.aspx>.

As defined by CDC, the "RSV season onset is the first of 2 consecutive weeks during which the mean percentage of specimens testing positive for RSV antigen is  $\geq 10\%$ . RSV season offset is the last of 2 consecutive weeks during which the mean percentage of positive specimens is  $< 10\%$ ." This definition has been adapted for our surveillance purposes; data reported in this report include the mean percentage of specimens testing positive by region.

RSV surveillance is also conducted by the National Respiratory and Enteric Virus Surveillance System (NREVSS), with eight Oregon labs reporting passively. Data from that surveillance system is available on CDC's website. NREVSS RSV surveillance: [<http://www.cdc.gov/surveillance/nrevss/rsv/>] (<http://www.cdc.gov/surveillance/nrevss/rsv/default.html>).

# RSV-OREGON

## Oregon's Weekly Respiratory Syncytial Virus Surveillance Report

Oregon Public Health Division/  
Acute & Communicable Disease Program

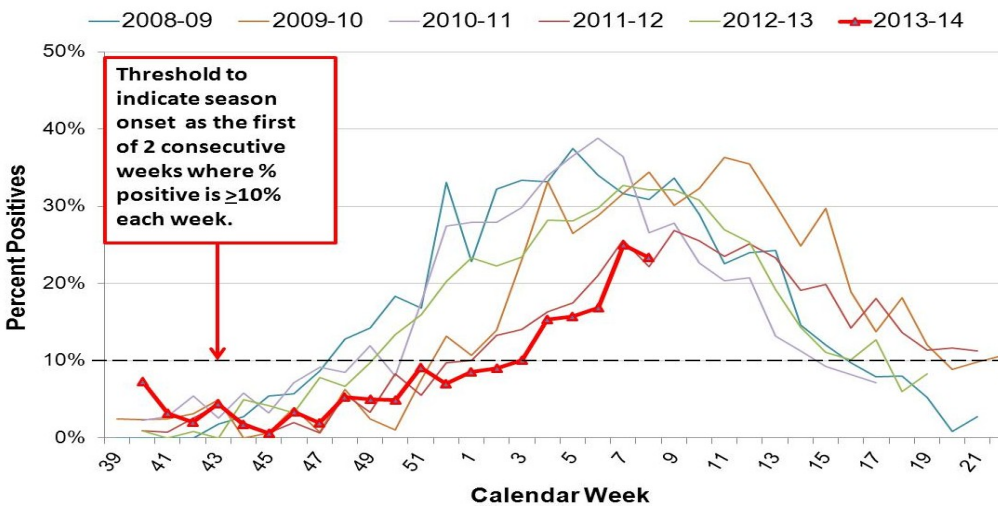


Published February 26, 2014

Week 08: Feb. 16 — 22, 2014				2013 — 2014 Cumulative	
Region	# Labs Detecting RSV	# RSV tests Performed	# RSV tests Positive (%)	# RSV tests Performed	# RSV tests Positive (%)
NW Oregon-SW Washington:	10	349	81 (23%)	5760	634 (11%)
Central Oregon:	1	28	4 (14%)	248	30 (12%)
Columbia Gorge-NE Oregon:	3	20	4 (20%)	440	41 (9%)
Southern Oregon:	5	43	14 (33%)	572	70 (12%)
<b>Regional Totals:</b>	<b>19 (86%)<sup>1</sup></b>	<b>440</b>	<b>103 (23%)<sup>2</sup></b>	<b>7020</b>	<b>775 (11%)</b>

**Week 08 data: 103 (23%) tests detected RSV, as reported by all 22 sentinel labs.**

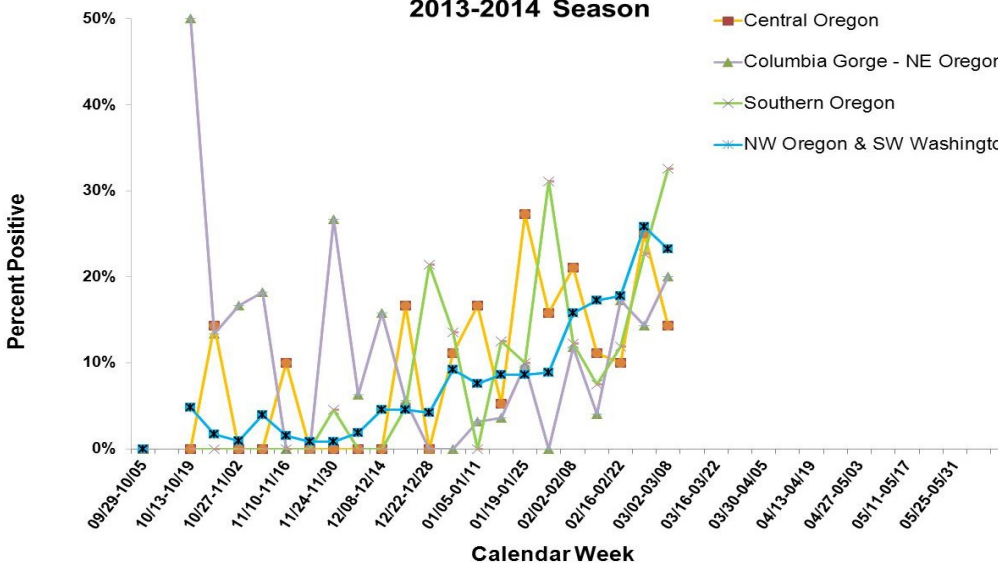
**Percent Positive RSV by Week  
Oregon and SW Washington,  
2013-2014 Season**



<sup>1</sup> of the labs reporting; <sup>2</sup> by definition, seasonal onset was Week 03-2014.

2013-14 RSV reporting in Oregon began the week beginning September 29, 2013. Reports may be based upon rapid tests, DFA, cultures and other test types. The test methods used vary from laboratory to laboratory. The total number of tests may not reflect the total number of patients tested. Laboratories reporting to the Oregon Health Authority/PHD now include 22 laboratories in Oregon and SW Washington. Their weekly participation involves reporting the number of RSV tests conducted by their lab and of those, the number testing positive for RSV. For more information regarding Oregon RSV surveillance, please see: <http://public.health.oregon.gov/DiseasesConditions/CommunicableDisease/DiseaseSurveillanceData/Pages/RespiratorySyncytialVirusSurveillanceData.aspx>.

**Respiratory Syncytial Virus Surveillance  
Percent Positive RSV by Week and Region  
2013-2014 Season**



As defined by CDC, the "RSV season onset is the first of 2 consecutive weeks during which the mean percentage of specimens testing positive for RSV antigen is  $\geq 10\%$ . RSV season offset is the last of 2 consecutive weeks during which the mean percentage of positive specimens is  $< 10\%$ ." This definition has been adapted for our surveillance purposes; data reported in this report include the mean percentage of specimens testing positive by region.

RSV surveillance is also conducted by the National Respiratory and Enteric Virus Surveillance System (NREVSS), with eight Oregon labs reporting passively. Data from that surveillance system is available on CDC's website. NREVSS RSV surveillance: <http://www.cdc.gov/surveillance/nrevss/rsv/> (<http://www.cdc.gov/surveillance/nrevss/rsv/default.html>).

# RSV-OREGON

## Oregon's Weekly Respiratory Syncytial Virus Surveillance Report

Oregon Public Health Division/  
Acute & Communicable Disease Program

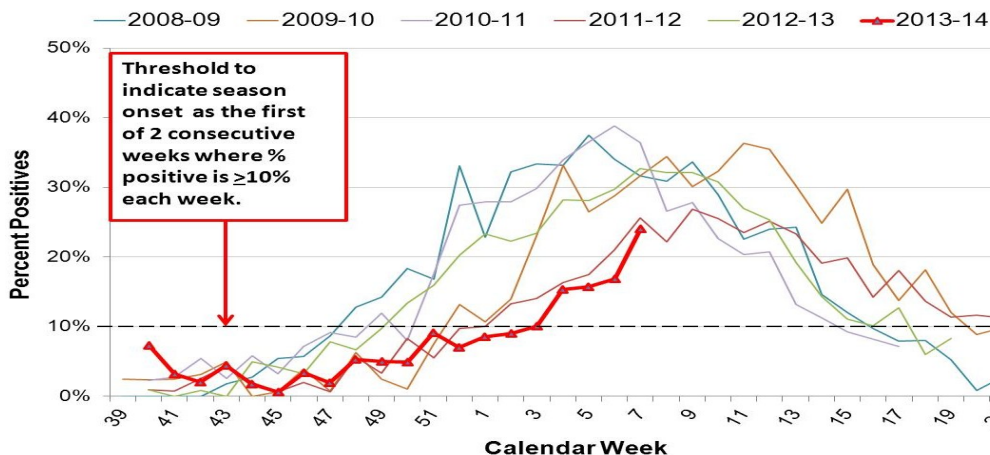


Published February 19, 2014

Week 07: Feb. 09 — 15, 2014				2013 — 2014 Cumulative	
Region	# Labs Detecting RSV	# RSV tests Performed	# RSV tests Positive (%)	# RSV tests Performed	# RSV tests Positive (%)
NW Oregon-SW Washington:	6	368	91 (25%)	5400	546 (10%)
Central Oregon:	1	20	5 (25%)	220	26 (12%)
Columbia Gorge-NE Oregon:	3	21	3 (14%)	420	37 (9%)
Southern Oregon:	4	44	10 (23%)	529	56 (11%)
<b>Regional Totals:</b>	<b>14 (67%)<sup>1</sup></b>	<b>453</b>	<b>109 (24%)<sup>2</sup></b>	<b>6569</b>	<b>665 (10%)</b>

**Week 07 data: 109 (24%) tests detected RSV, as reported by 21 of 22 sentinel labs.**

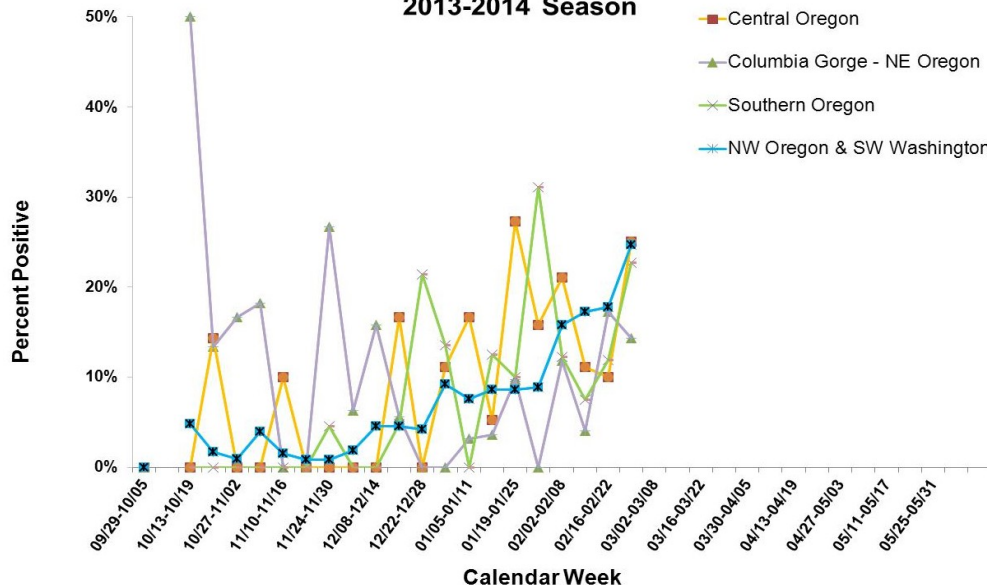
**Respiratory Syncytial Virus Surveillance  
Percent Positive RSV by Week  
Oregon and SW Washington,  
2013-2014 Season**



<sup>1</sup> of the labs reporting; <sup>2</sup> by definition, seasonal onset was Week 03-2014.

2013-14 RSV reporting in Oregon began the week beginning September 29, 2013. Reports may be based upon rapid tests, DFA, cultures and other test types. The test methods used vary from laboratory to laboratory. The total number of tests may not reflect the total number of patients tested. Laboratories reporting to the Oregon Health Authority/PHD now include 22 laboratories in Oregon and SW Washington. Their weekly participation involves reporting the number of RSV tests conducted by their lab and of those, the number testing positive for RSV. For more information regarding Oregon RSV surveillance, please see: <http://public.health.oregon.gov/DiseasesConditions/CommunicableDisease/DiseaseSurveillanceData/Pages/RespiratorySyncytialVirusSurveillanceData.aspx>.

**Respiratory Syncytial Virus Surveillance  
Percent Positive RSV by Week and Region  
2013-2014 Season**



As defined by CDC, the "RSV season onset is the first of 2 consecutive weeks during which the mean percentage of specimens testing positive for RSV antigen is  $\geq 10\%$ . RSV season offset is the last of 2 consecutive weeks during which the mean percentage of positive specimens is  $< 10\%$ ." This definition has been adapted for our surveillance purposes; data reported in this report include the mean percentage of specimens testing positive by region.

RSV surveillance is also conducted by the National Respiratory and Enteric Virus Surveillance System (NREVSS), with eight Oregon labs reporting passively. Data from that surveillance system is available on CDC's website. NREVSS RSV surveillance: [<http://www.cdc.gov/surveillance/nrevss/rsv/>] (<http://www.cdc.gov/surveillance/nrevss/rsv/default.html>).

# RSV-OREGON

## Oregon's Weekly Respiratory Syncytial Virus Surveillance Report

Oregon Public Health Division/  
Acute & Communicable Disease Program

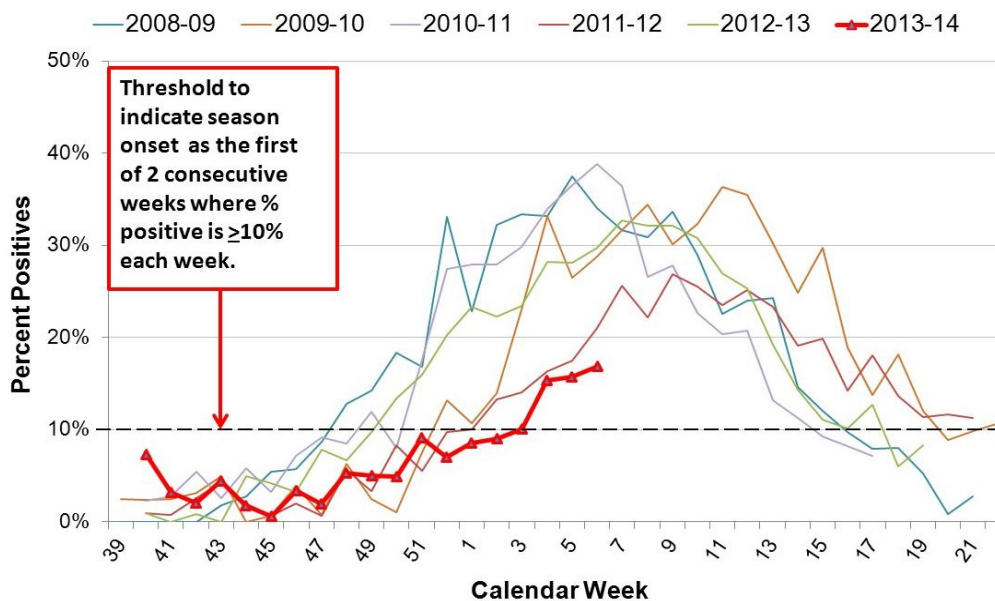


Published February 12, 2014

Week 06: Feb. 02 — 08, 2014				2013 — 2014 Cumulative	
Region	# Labs Detecting RSV	# RSV tests Performed	# RSV tests Positive (%)	# RSV tests Performed	# RSV tests Positive (%)
NW Oregon-SW Washington:	9	388	69 (18%)	5032	455 (9%)
Central Oregon:	2	20	2 (10%)	200	21 (11%)
Columbia Gorge-NE Oregon:	4	29	5 (17%)	399	34 (9%)
Southern Oregon:	2	42	5 (12%)	485	46 (9%)
<b>Regional Totals:</b>	<b>17 (77%)<sup>1</sup></b>	<b>479</b>	<b>81 (17%)<sup>2</sup></b>	<b>6116</b>	<b>556 (9%)</b>

Week 06 data: 81 (17%) tests detected RSV, as reported by all 22 sentinel labs.

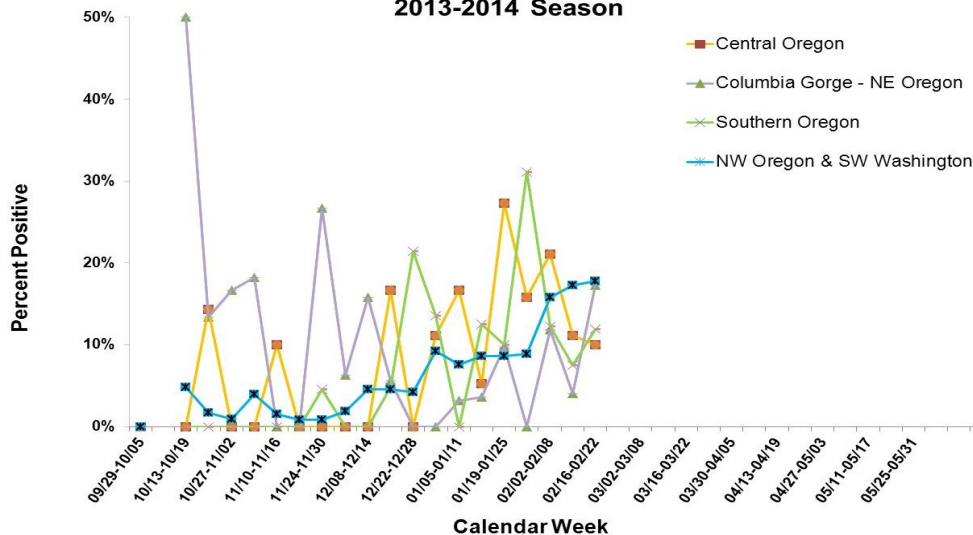
Oregon and SW Washington,  
2013-2014 Season



<sup>1</sup> of the labs reporting; <sup>2</sup> by definition, seasonal onset was Week 03-2014.

2013-14 RSV reporting in Oregon began the week beginning September 29, 2013. Reports may be based upon rapid tests, DFA, cultures and other test types. The test methods used vary from laboratory to laboratory. The total number of tests may not reflect the total number of patients tested. Laboratories reporting to the Oregon Health Authority/PHD now include 22 laboratories in Oregon and SW Washington. Their weekly participation involves reporting the number of RSV tests conducted by their lab and of those, the number testing positive for RSV. For more information regarding Oregon RSV surveillance, please see: <http://public.health.oregon.gov/DiseasesConditions/CommunicableDisease/DiseaseSurveillanceData/Pages/RespiratorySyncytialVirusSurveillanceData.aspx>.

Percent Positive RSV by Week and Region  
2013-2014 Season



As defined by CDC, the "RSV season onset is the first of 2 consecutive weeks during which the mean percentage of specimens testing positive for RSV antigen is  $\geq 10\%$ . RSV season offset is the last of 2 consecutive weeks during which the mean percentage of positive specimens is  $< 10\%$ ." This definition has been adapted for our surveillance purposes; data reported in this report include the mean percentage of specimens testing positive by region.

RSV surveillance is also conducted by the National Respiratory and Enteric Virus Surveillance System (NREVSS), with eight Oregon labs reporting passively. Data from that surveillance system is available on CDC's website. NREVSS RSV surveillance: [<http://www.cdc.gov/surveillance/nrevss/rsv/>] (<http://www.cdc.gov/surveillance/nrevss/rsv/default.html>).

# RSV-OREGON

## Oregon's Weekly Respiratory Syncytial Virus Surveillance Report

Oregon Public Health Division/  
Acute & Communicable Disease Program

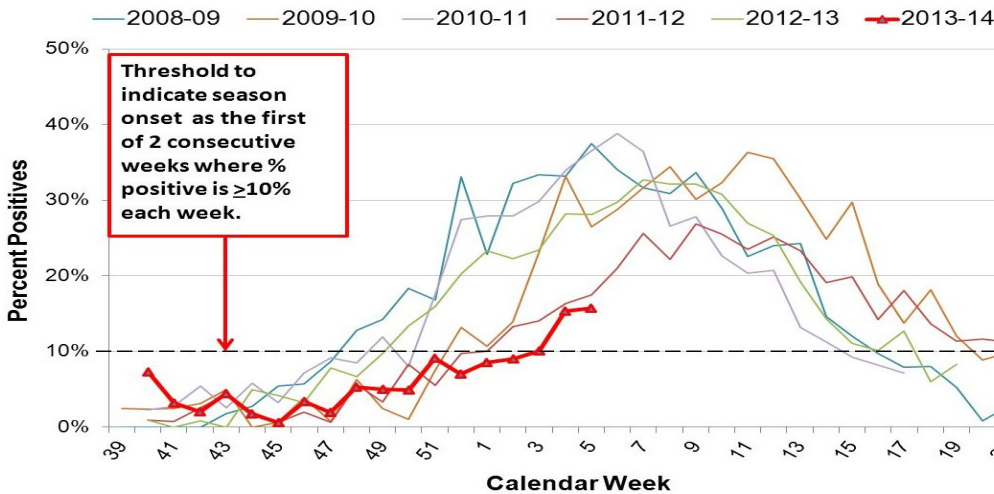


Published February 04, 2014

Week 05: Jan. 26 — Feb. 01, 2014				2013 — 2014 Cumulative	
Region	# Labs Detecting RSV	# RSV tests Performed	# RSV tests Positive (%)	# RSV tests Performed	# RSV tests Positive (%)
NW Oregon-SW Washington:	8	452	78 (17%)	4644	386 (8%)
Central Oregon:	2	18	2 (11%)	180	19 (11%)
Columbia Gorge-NE Oregon:	1	25	1 (4%)	370	29 (8%)
Southern Oregon:	2	40	3 (8%)	443	41 (9%)
<b>Regional Totals:</b>	<b>13</b>	<b>535</b>	<b>84 (16%)*</b>	<b>5637</b>	<b>475 (8%)</b>

**Week 05 data: 84 (16%) tests detected RSV, as reported by all 22 sentinel labs.**

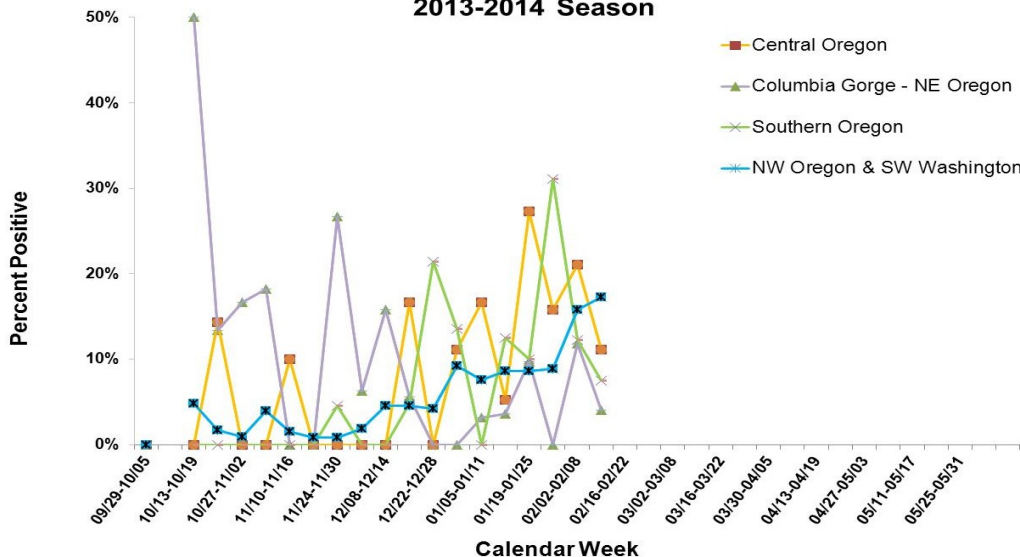
**Respiratory Syncytial Virus Surveillance  
Percent Positive RSV by Week  
Oregon and SW Washington,  
2013-2014 Season**



*\*By definition, seasonal onset was Week 03-2014.*

2013-14 RSV reporting in Oregon began the week beginning September 29, 2013. Reports may be based upon rapid tests, DFA, cultures and other test types. The test methods used vary from laboratory to laboratory. The total number of tests may not reflect the total number of patients tested. Laboratories reporting to the Oregon Health Authority/PHD now include 22 laboratories in Oregon and SW Washington. Their weekly participation involves reporting the number of RSV tests conducted by their lab and of those, the number testing positive for RSV. For more information regarding Oregon RSV surveillance, please see: <http://public.health.oregon.gov/DiseasesConditions/CommunicableDisease/DiseaseSurveillanceData/Pages/RespiratorySyncytialVirusSurveillanceData.aspx>.

**Respiratory Syncytial Virus Surveillance  
Percent Positive RSV by Week and Region  
2013-2014 Season**



As defined by CDC, the "RSV season onset is the first of 2 consecutive weeks during which the mean percentage of specimens testing positive for RSV antigen is ≥10%. RSV season offset is the last of 2 consecutive weeks during which the mean percentage of positive specimens is <10%." This definition has been adapted for our surveillance purposes; data reported in this report include the mean percentage of specimens testing positive by region.

RSV surveillance is also conducted by the National Respiratory and Enteric Virus Surveillance System (NREVSS), with eight Oregon labs reporting passively. Data from that surveillance system is available on CDC's website. NREVSS RSV surveillance: [<http://www.cdc.gov/surveillance/nrevss/rsv/>] (<http://www.cdc.gov/surveillance/nrevss/rsv/default.html>).



# RSV-OREGON

## Oregon's Weekly Respiratory Syncytial Virus Surveillance Report

Oregon Public Health Division/  
Acute & Communicable Disease Program

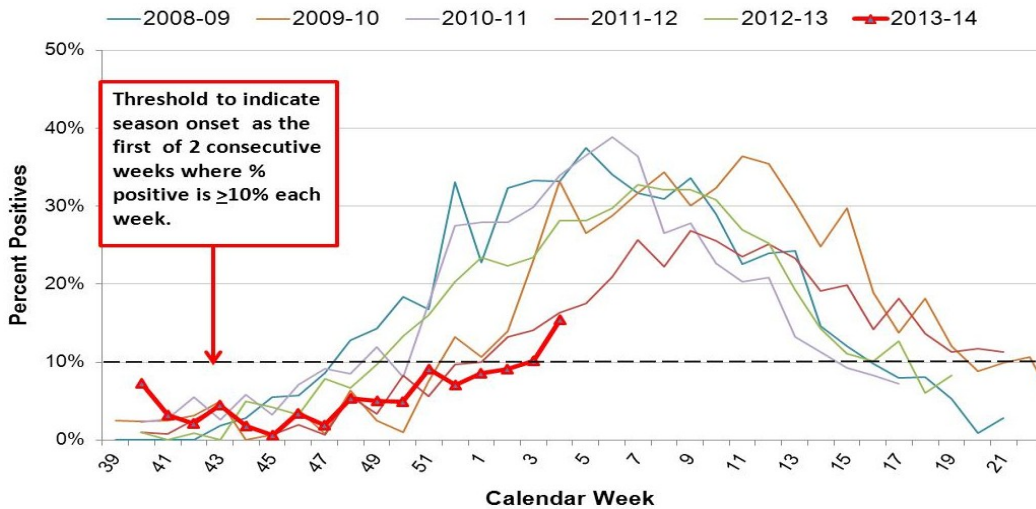


Published January 29, 2014

Week 04: January 19 — 25, 2014				2013 — 2014 Cumulative	
Region	# Labs Detecting RSV	# RSV tests Performed	# RSV tests Positive (%)	# RSV tests Performed	# RSV tests Positive (%)
NW Oregon-SW Washington:	7	457	72 (16%)	4192	308 (7%)
Central Oregon:	1	19	4 (21%)	162	17 (10%)
Columbia Gorge-NE Oregon:	1	34	4 (12%)	345	28 (8%)
Southern Oregon:	3	49	6 (12%)	403	38 (9%)
<b>Regional Totals:</b>	<b>12</b>	<b>559</b>	<b>86 (15%)*</b>	<b>5102</b>	<b>391 (8%)</b>

**Week 04 data: 86 (15%) tests detected RSV, as reported by all 22 sentinel labs.**

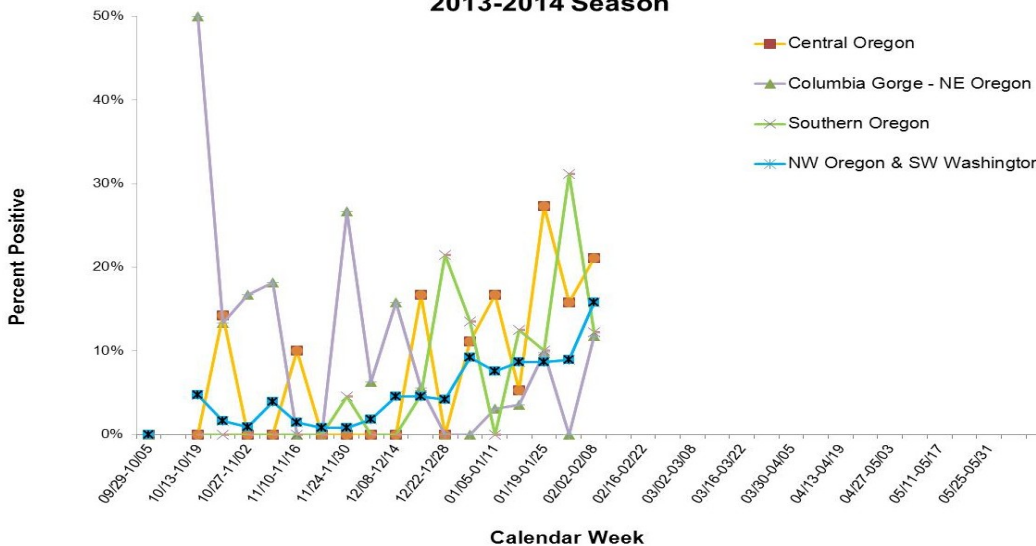
**Respiratory Syncytial Virus Surveillance  
Percent Positive RSV by Week  
Oregon and SW Washington,  
2013-2014 Season**



*\*By definition, seasonal onset was Week 03-2014.*

2013-14 RSV reporting in Oregon began the week beginning September 29, 2013. Reports may be based upon rapid tests, DFA, cultures and other test types. The test methods used vary from laboratory to laboratory. The total number of tests may not reflect the total number of patients tested. Laboratories reporting to the Oregon Health Authority/PHD now include 22 laboratories in Oregon and SW Washington. Their weekly participation involves reporting the number of RSV tests conducted by their lab and of those, the number testing positive for RSV. For more information regarding Oregon RSV surveillance, please see: <http://public.health.oregon.gov/DiseasesConditions/CommunicableDisease/DiseaseSurveillanceData/Pages/RespiratorySyncytialVirusSurveillanceData.aspx>.

**Respiratory Syncytial Virus Surveillance  
Percent Positive RSV by Week and Region  
2013-2014 Season**



As defined by CDC, the "RSV season onset is the first of 2 consecutive weeks during which the mean percentage of specimens testing positive for RSV antigen is  $\geq 10\%$ . RSV season offset is the last of 2 consecutive weeks during which the mean percentage of positive specimens is  $< 10\%$ ." This definition has been adapted for our surveillance purposes; data reported in this report include the mean percentage of specimens testing positive by region.

RSV surveillance is also conducted by the National Respiratory and Enteric Virus Surveillance System (NREVSS), with eight Oregon labs reporting passively. Data from that surveillance system is available on CDC's website. NREVSS RSV surveillance: [<http://www.cdc.gov/surveillance/nrevss/rsv/> (<http://www.cdc.gov/surveillance/nrevss/rsv/default.html>)].

# RSV-OREGON

## Oregon's Weekly Respiratory Syncytial Virus Surveillance Report

Oregon Public Health Division/  
Acute & Communicable Disease Program

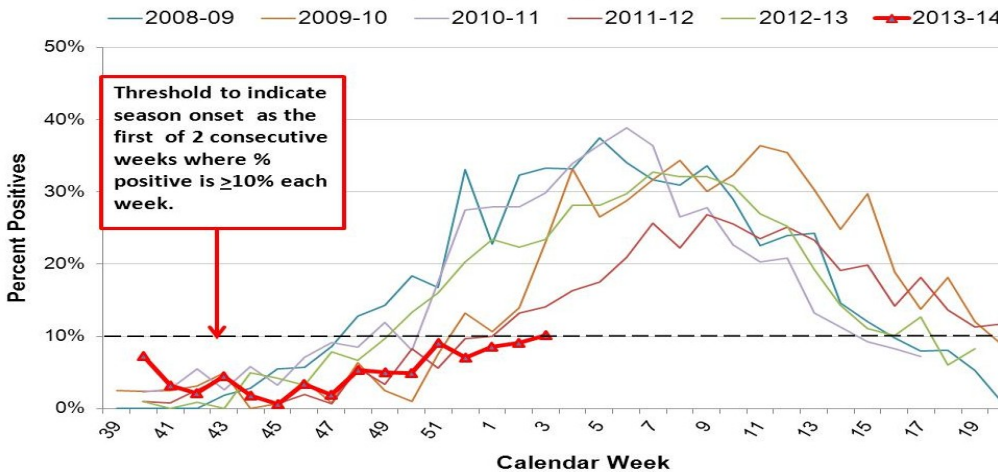


Published January 22, 2014

Week 03: January 12 — 18, 2014				2013 — 2014 Cumulative	
Region	# Labs Detecting RSV	# RSV tests Performed	# RSV tests Positive (%)	# RSV tests Performed	# RSV tests Positive (%)
NW Oregon-SW Washington:	7	550	49 (7%)	3735	236 (6%)
Central Oregon:	1	19	3 (16%)	143	13 (9%)
Columbia Gorge-NE Oregon:	0	38	0	311	24 (8%)
Southern Oregon:	3	45	14 (31%)	354	32 (9%)
<b>Regional Totals:</b>	<b>11</b>	<b>652</b>	<b>66 (10%)</b>	<b>4543</b>	<b>305 (7%)</b>

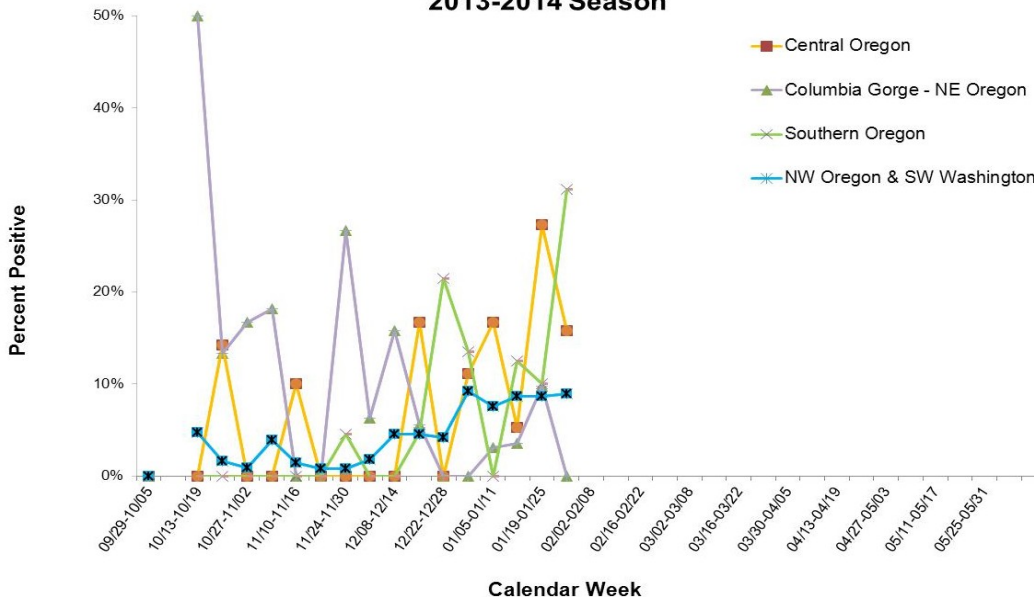
**Week 03 data: 66 (10%) tests detected RSV, as reported by all 22 sentinel labs.**

**Respiratory Syncytial Virus Surveillance  
Percent Positive RSV by Week  
Oregon and SW Washington,  
2013-2014 Season**



2013-14 RSV reporting in Oregon began the week beginning September 29, 2013. Reports may be based upon rapid tests, DFA, cultures and other test types. The test methods used vary from laboratory to laboratory. The total number of tests may not reflect the total number of patients tested. Laboratories reporting to the Oregon Health Authority/PHD now include 22 laboratories in Oregon and SW Washington. Their weekly participation involves reporting the number of RSV tests conducted by their lab and of those, the number testing positive for RSV. For more information regarding Oregon RSV surveillance, please see: <http://public.health.oregon.gov/DiseasesConditions/CommunicableDisease/DiseaseSurveillanceData/Pages/RespiratorySyncytialVirusSurveillanceData.aspx>.

**Respiratory Syncytial Virus Surveillance  
Percent Positive RSV by Week and Region  
2013-2014 Season**



As defined by CDC, the "RSV season onset is the first of 2 consecutive weeks during which the mean percentage of specimens testing positive for RSV antigen is  $\geq 10\%$ . RSV season offset is the last of 2 consecutive weeks during which the mean percentage of positive specimens is  $< 10\%$ ." This definition has been adapted for our surveillance purposes; data reported in this report include the mean percentage of specimens testing positive by region.

RSV surveillance is also conducted by the National Respiratory and Enteric Virus Surveillance System (NREVSS), with eight Oregon labs reporting passively. Data from that surveillance system is available on CDC's website. NREVSS RSV surveillance: <http://www.cdc.gov/surveillance/nrevss/rsv/> (<http://www.cdc.gov/surveillance/nrevss/rsv/default.html>).

# RSV-OREGON

## Oregon's Weekly Respiratory Syncytial Virus Surveillance Report

Oregon Public Health Division/  
Acute & Communicable Disease Program

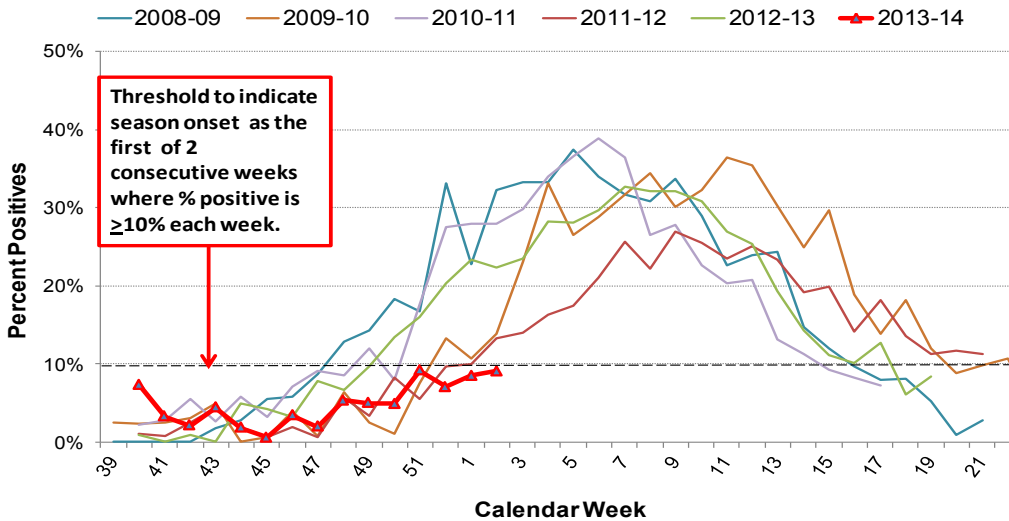


Published January 15, 2014

Week 02: January 05 — 11, 2014				2013 — 2014 Cumulative	
Region	# Labs Detecting RSV	# RSV tests Performed	# RSV tests Positive (%)	# RSV tests Performed	# RSV tests Positive (%)
NW Oregon-SW Washington:	5	625	54 (9%)	3185	187 (6%)
Central Oregon:	1	11	3 (27%)	124	10 (8%)
Columbia Gorge-NE Oregon:	2	41	4 (10%)	273	24 (9%)
Southern Oregon:	2	40	4 (10%)	309	18 (6%)
<b>Regional Totals:</b>	<b>10</b>	<b>717</b>	<b>65 (9%)</b>	<b>3891</b>	<b>239 (6%)</b>

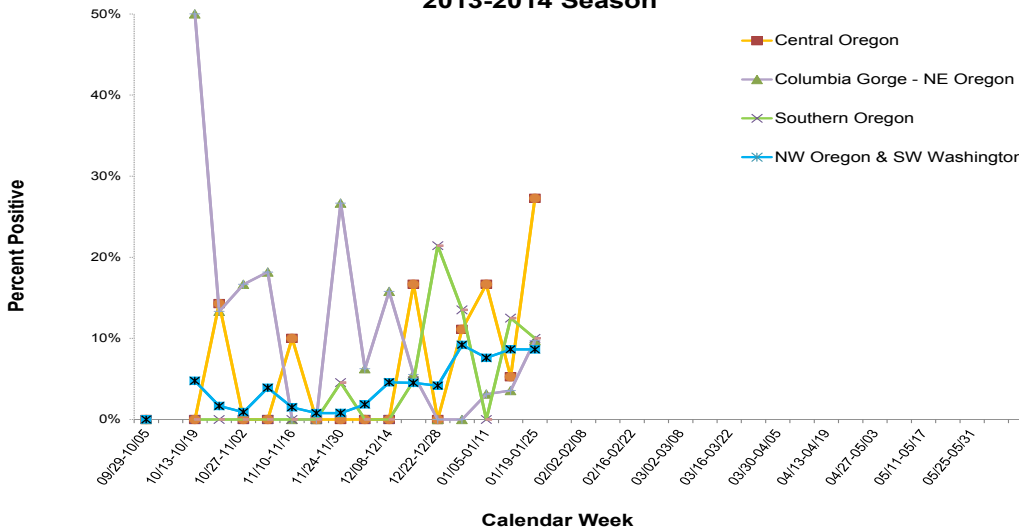
**Week 02 data: 65 (9%) tests detected RSV, as reported by all 22 sentinel labs.**

### Respiratory Syncytial Virus Surveillance Percent Positive RSV by Week Oregon and SW Washington, 2013-2014 Season



As you see in the top left graph, % of RSV detected is less than the previous 5 seasons. 2013-14 RSV reporting in Oregon began the week beginning September 29, 2013. Reports may be based upon rapid tests, DFA, cultures and other test types. The test methods used vary from laboratory to laboratory. The total number of tests may not reflect the total number of patients tested. Laboratories reporting to the Oregon Health Authority/PHD now include 22 laboratories in Oregon and SW Washington. Their weekly participation involves reporting the number of RSV tests conducted by their lab and of those, the number testing positive for RSV. For more information regarding Oregon RSV surveillance, please see: <http://public.health.oregon.gov/DiseasesConditions/CommunicableDisease/DiseaseSurveillanceData/Pages/RespiratorySyncytialVirusSurveillance-Data.aspx>.

### Respiratory Syncytial Virus Surveillance Percent Positive RSV by Week and Region 2013-2014 Season



As defined by CDC, the "RSV season onset is the first of 2 consecutive weeks during which the mean percentage of specimens testing positive for RSV antigen is  $\geq 10\%$ . RSV season offset is the last of 2 consecutive weeks during which the mean percentage of positive specimens is  $< 10\%$ ." This definition has been adapted for our surveillance purposes; data reported in this report include the mean percentage of specimens testing positive by region.

RSV surveillance is also conducted by the National Respiratory and Enteric Virus Surveillance System (NREVSS), with eight Oregon labs reporting passively. Data from that surveillance system is available on CDC's website. NREVSS RSV surveillance: [<http://www.cdc.gov/surveillance/nrevss/rsv/>] (<http://www.cdc.gov/surveillance/nrevss/rsv/default.html>).

# RSV-OREGON

## Oregon's Weekly Respiratory Syncytial Virus Surveillance Report

Oregon Public Health Division/  
Acute & Communicable Disease Program

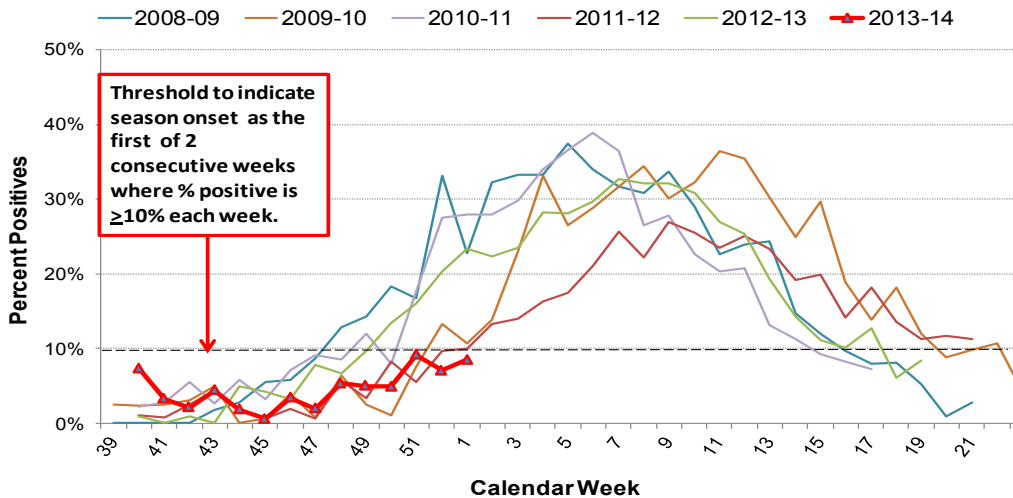


Published January 07, 2014

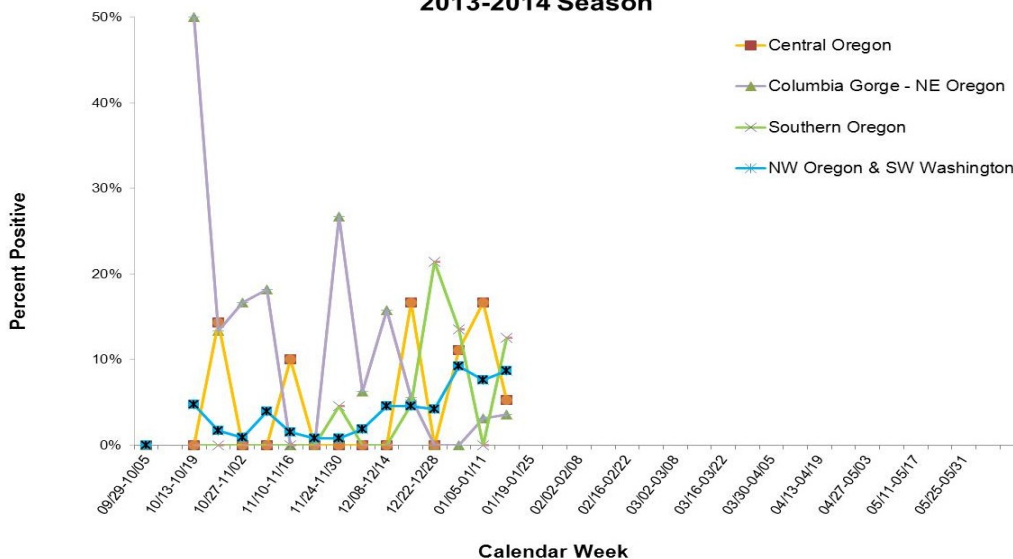
Region	Week 01: Dec. 29, 2013 — Jan. 04, 2014			2013—2014 Cumulative	
	# Labs Detecting RSV	# RSV tests Performed	# RSV tests Positive (%)	# RSV tests Performed	# RSV tests Positive (%)
NW Oregon-SW Washington:	6	532	46 (9%)	2560	133 (5%)
Central Oregon:	1	19	1 (5%)	113	7 (6%)
Columbia Gorge-NE Oregon:	1	28	1 (4%)	232	20 (9%)
Southern Oregon:	3	32	4 (13%)	269	14 (5%)
<b>Regional Totals:</b>	<b>11</b>	<b>611</b>	<b>52 (9%)</b>	<b>3174</b>	<b>174 (5%)</b>

**Week 01 data: 52 (9%) tests detected RSV, as reported by all 22 sentinel labs.**

**Respiratory Syncytial Virus Surveillance  
Percent Positive RSV by Week  
Oregon and SW Washington,  
2013-2014 Season**



**Respiratory Syncytial Virus Surveillance  
Percent Positive RSV by Week and Region  
2013-2014 Season**



2013-14 RSV reporting in Oregon began the week beginning September 29, 2013. Reports may be based upon rapid tests, DFA, cultures and other test types. The test methods used vary from laboratory to laboratory. The total number of tests may not reflect the total number of patients tested. Laboratories reporting to the Oregon Health Authority/PHD now include 22 laboratories in Oregon and SW Washington. Their weekly participation involves reporting the number of RSV tests conducted by their lab and of those, the number testing positive for RSV. For more information regarding Oregon RSV surveillance, please see: <http://public.health.oregon.gov/DiseasesConditions/CommunicableDisease/DiseaseSurveillanceData/Pages/RespiratorySyncytialVirusSurveillanceData.aspx>.

As defined by CDC, the "RSV season onset is the first of 2 consecutive weeks during which the mean percentage of specimens testing positive for RSV antigen is  $\geq 10\%$ . RSV season offset is the last of 2 consecutive weeks during which the mean percentage of positive specimens is  $< 10\%$ ." This definition has been adapted for our surveillance purposes; data reported in this report include the mean percentage of specimens testing positive by region.

RSV surveillance is also conducted by the National Respiratory and Enteric Virus Surveillance System (NREVSS), with eight Oregon labs reporting passively. Data from that surveillance system is available on CDC's website. NREVSS RSV surveillance: (<http://www.cdc.gov/surveillance/nrevss/rsv/> (<http://www.cdc.gov/surveillance/nrevss/rsv/default.html>)).

# RSV-OREGON

## Oregon's Weekly Respiratory Syncytial Virus Surveillance Report

Oregon Public Health Division/  
Acute & Communicable Disease Program

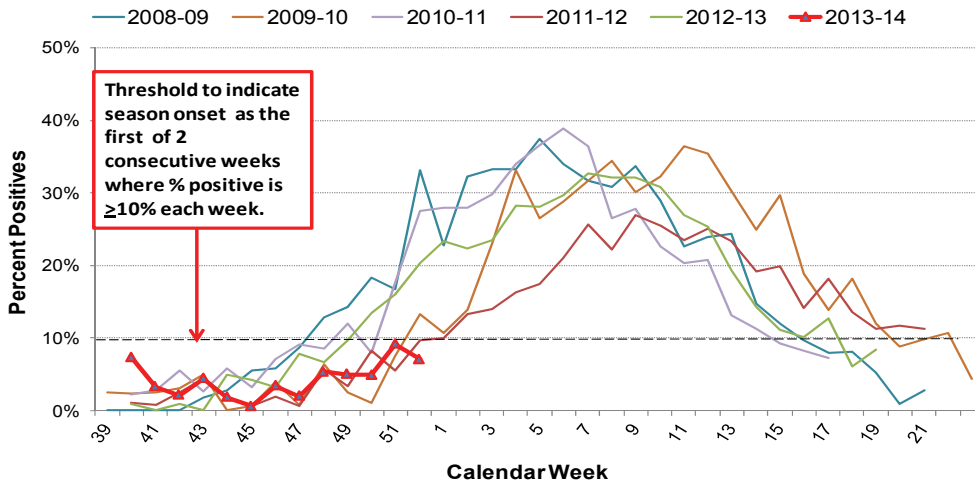


Published December 31, 2013

Region	Week 52: December 22 — 28, 2013			2013—2014 Cumulative	
	# Labs Detecting RSV	# RSV tests Performed	# RSV tests Positive (%)	# RSV tests Performed	# RSV tests Positive (%)
NW Oregon-SW Washington:	7	326	25 (8%)	2025	87 (4%)
Central Oregon:	1	12	2 (17%)	94	6 (6%)
Columbia Gorge-NE Oregon:	1	32	1 (3%)	204	19 (9%)
Southern Oregon:	0	25	0	237	10 (4%)
<b>Regional Totals:</b>	<b>9</b>	<b>395</b>	<b>28 (7%)</b>	<b>2560</b>	<b>122 (5%)</b>

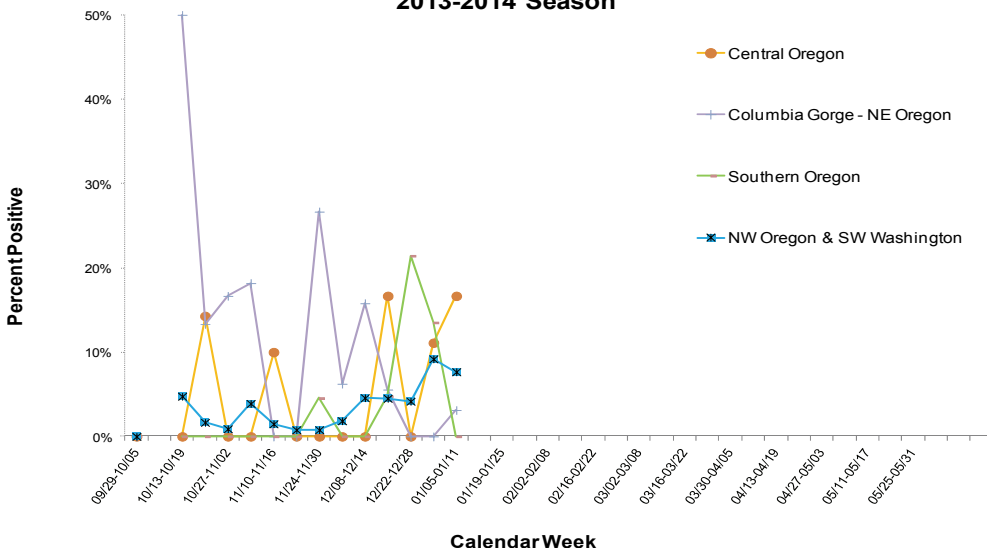
**Week 52 data: 28 (7%) tests detected RSV, as reported by 21 OF 22 sentinel labs.**

**Respiratory Syncytial Virus Surveillance  
Percent Positive RSV by Week  
Oregon and SW Washington,  
2013-2014 Season**



2013-14 RSV reporting in Oregon began the week beginning September 29, 2013. Reports may be based upon rapid tests, DFA, cultures and other test types. The test methods used vary from laboratory to laboratory. The total number of tests may not reflect the total number of patients tested. Laboratories reporting to the Oregon Health Authority/PHD now include 22 laboratories in Oregon and SW Washington. Their weekly participation involves reporting the number of RSV tests conducted by their lab and of those, the number testing positive for RSV. For more information regarding Oregon RSV surveillance, please see: <http://public.health.oregon.gov/DiseasesConditions/CommunicableDisease/DiseaseSurveillanceData/Pages/RespiratorySyncytialVirusSurveillance-Data.aspx>.

**Respiratory Syncytial Virus Surveillance  
Percent Positive RSV by Week and Region  
2013-2014 Season**



As defined by CDC, the "RSV season onset is the first of 2 consecutive weeks during which the mean percentage of specimens testing positive for RSV antigen is  $\geq 10\%$ . RSV season offset is the last of 2 consecutive weeks during which the mean percentage of positive specimens is  $< 10\%$ ." This definition has been adapted for our surveillance purposes; data reported in this report include the mean percentage of specimens testing positive by region.

RSV surveillance is also conducted by the National Respiratory and Enteric Virus Surveillance System (NREVSS), with eight Oregon labs reporting passively. Data from that surveillance system is available on CDC's website. NREVSS RSV surveillance: <http://www.cdc.gov/surveillance/nrevss/rsv/> (<http://www.cdc.gov/surveillance/nrevss/rsv/default.html>).

# RSV-OREGON

## Oregon's Weekly Respiratory Syncytial Virus Surveillance Report

Oregon Public Health Division/  
Acute & Communicable Disease Program

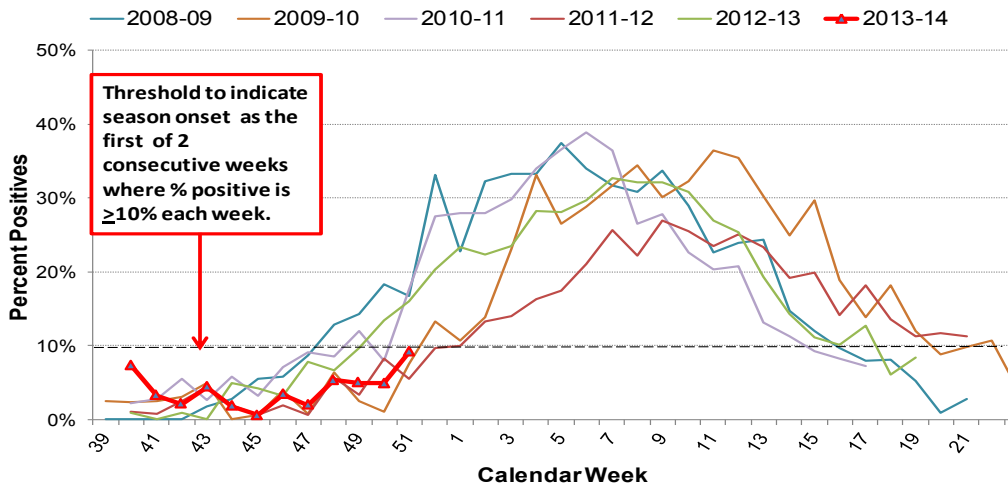


Published December 24, 2013

Region	Week 51: December 15 — 21, 2013			2013—2014 Cumulative	
	# Labs Detecting RSV	# RSV tests Performed	# RSV tests Positive (%)	# RSV tests Performed	# RSV tests Positive (%)
NW Oregon-SW Washington:	6	250	23 (9%)	1699	62 (4%)
Central Oregon:	1	9	1 (11%)	82	4 (5%)
Columbia Gorge-NE Oregon:	0	22	0	172	18 (10%)
Southern Oregon:	2	37	5 (14%)	212	10 (5%)
<b>Regional Totals:</b>	<b>9</b>	<b>318</b>	<b>29 (9%)</b>	<b>2165</b>	<b>94 (4%)</b>

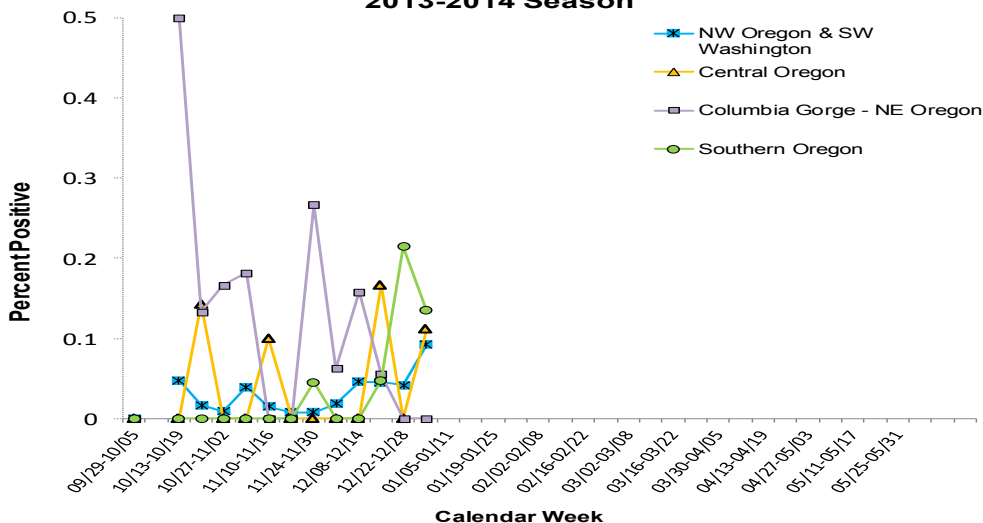
**Week 51 data: 29 (9%) tests detected RSV, as reported by all 22 sentinel labs.**

### Respiratory Syncytial Virus Surveillance Percent Positive RSV by Week Oregon and SW Washington, 2013-2014 Season



2013-14 RSV reporting in Oregon began the week beginning September 29, 2013. Reports may be based upon rapid tests, DFA, cultures and other test types. The test methods used vary from laboratory to laboratory. The total number of tests may not reflect the total number of patients tested. Laboratories reporting to the Oregon Health Authority/PHD now include 22 laboratories in Oregon and SW Washington. Their weekly participation involves reporting the number of RSV tests conducted by their lab and of those, the number testing positive for RSV. For more information regarding Oregon RSV surveillance, please see: <http://public.health.oregon.gov/DiseasesConditions/CommunicableDisease/DiseaseSurveillanceData/Pages/RespiratorySyncytialVirusSurveillance-Data.aspx>.

### Respiratory Syncytial Virus Surveillance Percent Positive RSV by Week and Region 2013-2014 Season



As defined by CDC, the "RSV season onset is the first of 2 consecutive weeks during which the mean percentage of specimens testing positive for RSV antigen is  $\geq 10\%$ . RSV season offset is the last of 2 consecutive weeks during which the mean percentage of positive specimens is  $< 10\%$ ." This definition has been adapted for our surveillance purposes; data reported in this report include the mean percentage of specimens testing positive by region.

RSV surveillance is also conducted by the National Respiratory and Enteric Virus Surveillance System (NREVSS), with eight Oregon labs reporting passively. Data from that surveillance system is available on CDC's website. NREVSS RSV surveillance: (<http://www.cdc.gov/surveillance/nrevss/rsv/> (<http://www.cdc.gov/surveillance/nrevss/rsv/default.html>)).

# RSV-OREGON

Oregon's Weekly Respiratory Syncytial Virus Surveillance Report  
Oregon Public Health Division/

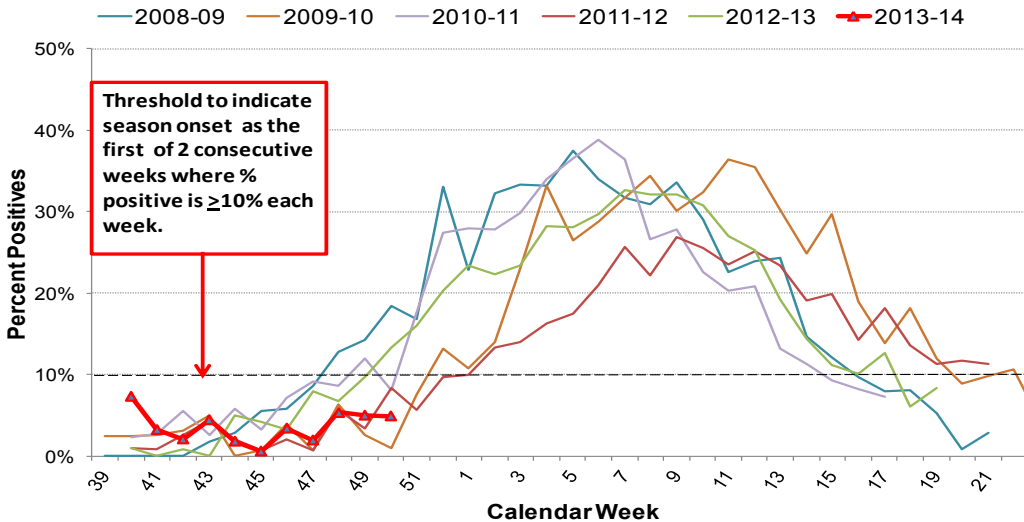


Published December 18, 2013

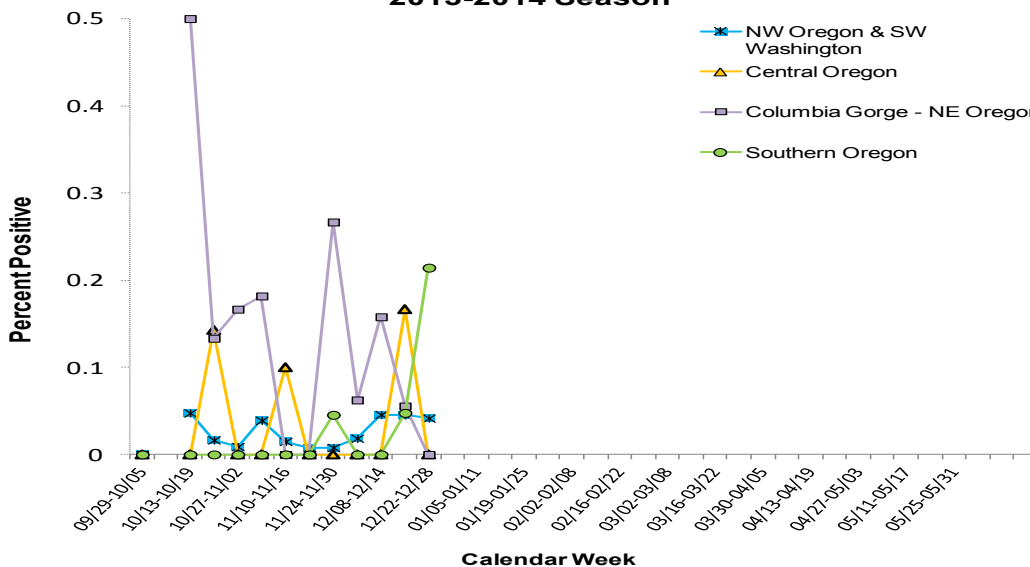
Week 50: December 08 — 14, 2013				2013—2014 Cumulative	
Region	# Labs Detecting RSV	# RSV tests Performed	# RSV tests Positive (%)	# RSV tests Performed	# RSV tests Positive (%)
NW Oregon-SW Washington:	5	192	8 (4%)	1449	39 (3%)
Central Oregon:	0	6	0	73	3 (4%)
Columbia Gorge-NE Oregon:	0	12	0	150	18 (12%)
Southern Oregon:	2	14	3 (21%)	175	5 (3%)
<b>Regional Totals:</b>	<b>7</b>	<b>224</b>	<b>11 (5%)</b>	<b>1847</b>	<b>65 (4%)</b>

**Week 50 data: 11 (5%) tests detected RSV, as reported by all 22 sentinel labs.**

**Respiratory Syncytial Virus Surveillance  
Percent Positive RSV by Week  
Oregon and SW Washington,  
2013-2014 Season**



**Respiratory Syncytial Virus Surveillance  
Percent Positive RSV by Week and Region  
2013-2014 Season**



2013-14 RSV reporting in Oregon began the week beginning September 29, 2013. Reports may be based upon rapid tests, DFA, cultures and other test types. The test methods used vary from laboratory to laboratory. The total number of tests may not reflect the total number of patients tested. Laboratories reporting to the Oregon Health Authority/PHD now include 22 laboratories in Oregon and SW Washington. Their weekly participation involves reporting the number of RSV tests conducted by their lab and of those, the number testing positive for RSV. For more information regarding Oregon RSV surveillance, please see: <http://public.health.oregon.gov/DiseasesConditions/CommunicableDisease/DiseaseSurveillanceData/Pages/RespiratorySyncytialVirusSurveillance-Data.aspx>.

As defined by CDC, the "RSV season onset is the first of 2 consecutive weeks during which the mean percentage of specimens testing positive for RSV antigen is  $\geq 10\%$ . RSV season offset is the last of 2 consecutive weeks during which the mean percentage of positive specimens is  $< 10\%$ ." This definition has been adapted for our surveillance purposes; data reported in this report include the mean percentage of specimens testing positive by region.

RSV surveillance is also conducted by the National Respiratory and Enteric Virus Surveillance System (NREVSS), with eight Oregon labs reporting passively. Data from that surveillance system is available on CDC's website. NREVSS RSV surveillance: (<http://www.cdc.gov/surveillance/nrevss/rsv/> (<http://www.cdc.gov/surveillance/nrevss/rsv/default.html>)).

# RSV-OREGON

Oregon's Weekly Respiratory Syncytial Virus  
Surveillance Report  
Oregon Public Health Division/

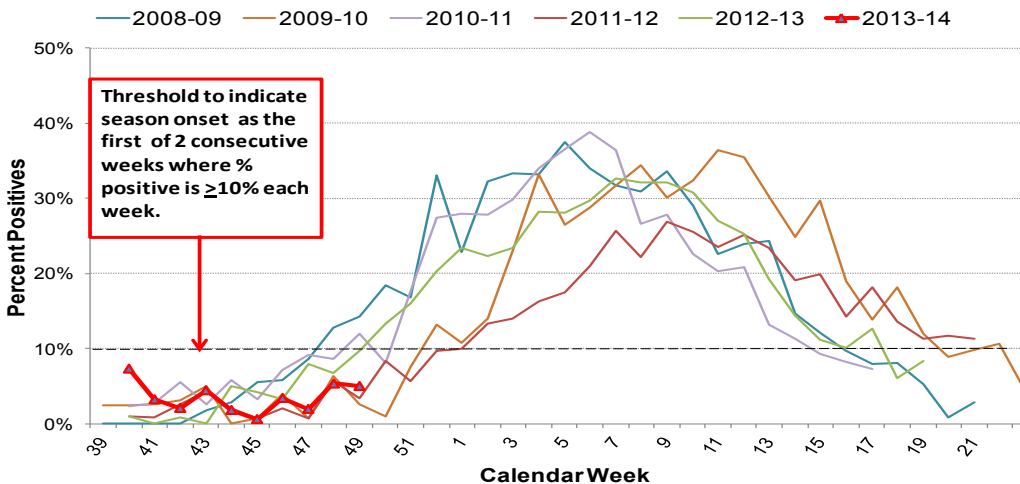


Published December 11, 2013

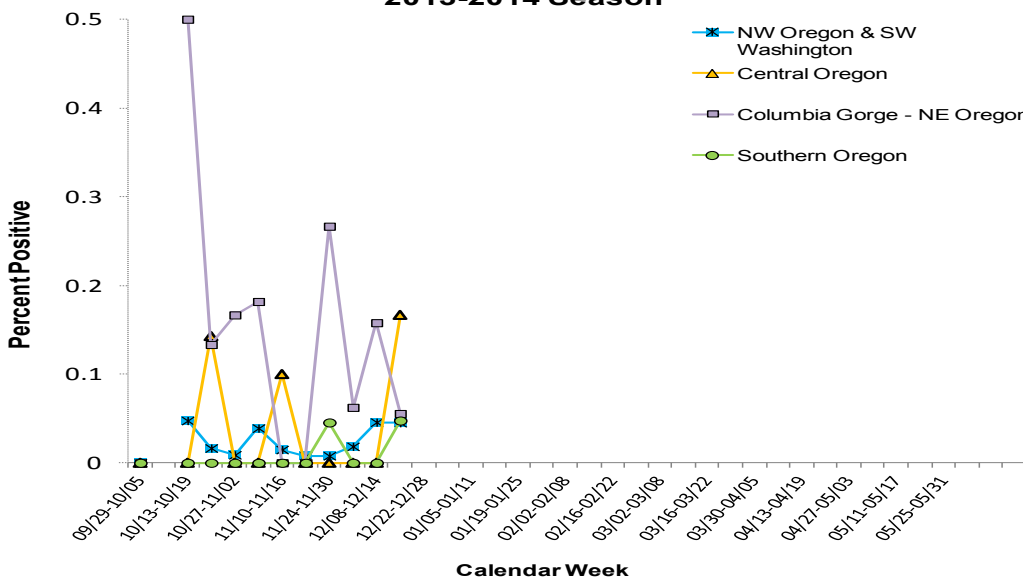
Week 49: December 01 — 07, 2013				2013—2014 Cumulative	
Region	# Labs Detecting RSV	# RSV tests Performed	# RSV tests Positive (%)	# RSV tests Performed	# RSV tests Positive (%)
NW Oregon-SW Washington:	3	155	7 (5%)	1257	31 (3%)
Central Oregon:	1	6	1 (17%)	67	3 (4%)
Columbia Gorge-NE Oregon:	1	18	1 (6%)	138	18 (13%)
Southern Oregon:	1	21	1 (5%)	161	2 (1%)
<b>Regional Totals:</b>	<b>6</b>	<b>195</b>	<b>10 (5%)</b>	<b>1623</b>	<b>54 (3%)</b>

Week 49 data: 10 (5%) tests detected RSV, as reported by all 22 sentinel labs.

Respiratory Syncytial Virus Surveillance  
Percent Positive RSV by Week  
Oregon and SW Washington,  
2013-2014 Season



Respiratory Syncytial Virus Surveillance  
Percent Positive RSV by Week and Region  
2013-2014 Season



2013-14 RSV reporting in Oregon began the week beginning September 29, 2013. Reports may be based upon rapid tests, DFA, cultures and other test types. The test methods used vary from laboratory to laboratory. The total number of tests may not reflect the total number of patients tested. Laboratories reporting to the Oregon Health Authority/PHD now include 22 laboratories in Oregon and SW Washington. Their weekly participation involves reporting the number of RSV tests conducted by their lab and of those, the number testing positive for RSV. For more information regarding Oregon RSV surveillance, please see: <http://public.health.oregon.gov/DiseasesConditions/CommunicableDisease/DiseaseSurveillanceData/Pages/RespiratorySyncytialVirusSurveillance-Data.aspx>.

As defined by CDC, the "RSV season onset is the first of 2 consecutive weeks during which the mean percentage of specimens testing positive for RSV antigen is  $\geq 10\%$ . RSV season offset is the last of 2 consecutive weeks during which the mean percentage of positive specimens is  $< 10\%$ ." This definition has been adapted for our surveillance purposes; data reported in this report include the mean percentage of specimens testing positive by region.

RSV surveillance is also conducted by the National Respiratory and Enteric Virus Surveillance System (NREVSS), with eight Oregon labs reporting passively. Data from that surveillance system is available on CDC's website. NREVSS RSV surveillance: (<http://www.cdc.gov/surveillance/nrevss/rsv/> (<http://www.cdc.gov/surveillance/nrevss/rsv/default.html>)).



# RSV-OREGON

Oregon's Weekly Respiratory Syncytial Virus Surveillance Report  
Oregon Public Health Division/

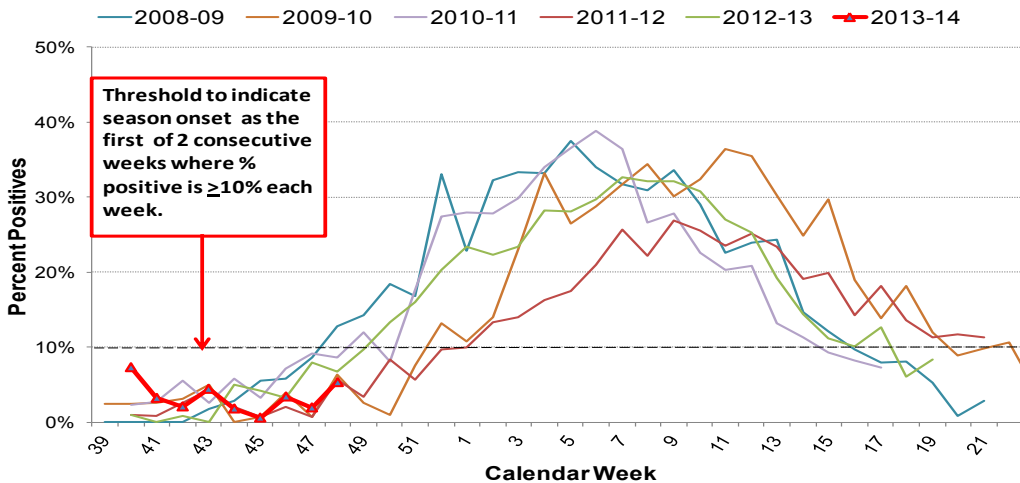


Published December 03, 2013

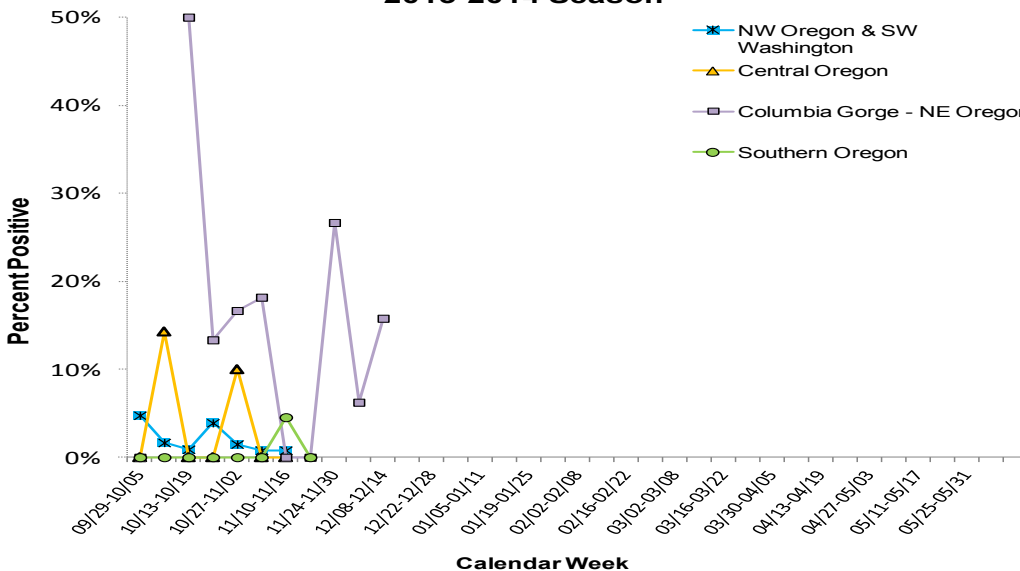
Region	Week 48: November 24 — 30 , 2013			2013—2014 Cumulative	
	# Labs Detecting RSV	# RSV tests Performed	# RSV tests Positive (%)	# RSV tests Performed	# RSV tests Positive (%)
NW Oregon-SW Washington:	3	131	6 (5%)	1102	24 (2%)
Central Oregon:	0	0	0	61	2 (3%)
Columbia Gorge-NE Oregon:	1	19	3 (16%)	120	17 (14%)
Southern Oregon:	0	19	0	140	1 (1%)
<b>Regional Totals:</b>	<b>4</b>	<b>169</b>	<b>9 (5%)</b>	<b>1423</b>	<b>44 (3%)</b>

**Week 48 data: 9 (5%) tests detected RSV, as reported by 22/22 sentinel labs.**

**Respiratory Syncytial Virus Surveillance  
Percent Positive RSV by Week  
Oregon and SW Washington,  
2013-2014 Season**



**Respiratory Syncytial Virus Surveillance  
Percent Positive RSV by Week and Region  
2013-2014 Season**



2013-14 RSV reporting in Oregon began the week beginning September 29, 2013. Reports may be based upon rapid tests, DFA, cultures and other test types. The test methods used vary from laboratory to laboratory. The total number of tests may not reflect the total number of patients tested. Laboratories reporting to the Oregon Health Authority/PHD now include 22 laboratories in Oregon and SW Washington. Their weekly participation involves reporting the number of RSV tests conducted by their lab and of those, the number testing positive for RSV. For more information regarding Oregon RSV surveillance, please see: <http://public.health.oregon.gov/DiseasesConditions/CommunicableDisease/DiseaseSurveillanceData/Pages/RespiratorySyncytialVirusSurveillance-Data.aspx>.

As defined by CDC, the "RSV season onset is the first of 2 consecutive weeks during which the mean percentage of specimens testing positive for RSV antigen is  $\geq 10\%$ . RSV season offset is the last of 2 consecutive weeks during which the mean percentage of positive specimens is  $< 10\%$ ." This definition has been adapted for our surveillance purposes; data reported in this report include the mean percentage of specimens testing positive by region.

RSV surveillance is also conducted by the National Respiratory and Enteric Virus Surveillance System (NREVSS), with eight Oregon labs reporting passively. Data from that surveillance system is available on CDC's website. NREVSS RSV surveillance: (<http://www.cdc.gov/surveillance/nrevss/rsv/> (<http://www.cdc.gov/surveillance/nrevss/rsv/default.html>)).

# RSV-OREGON

Oregon's Weekly Respiratory Syncytial Virus Surveillance Report  
Oregon Public Health Division/

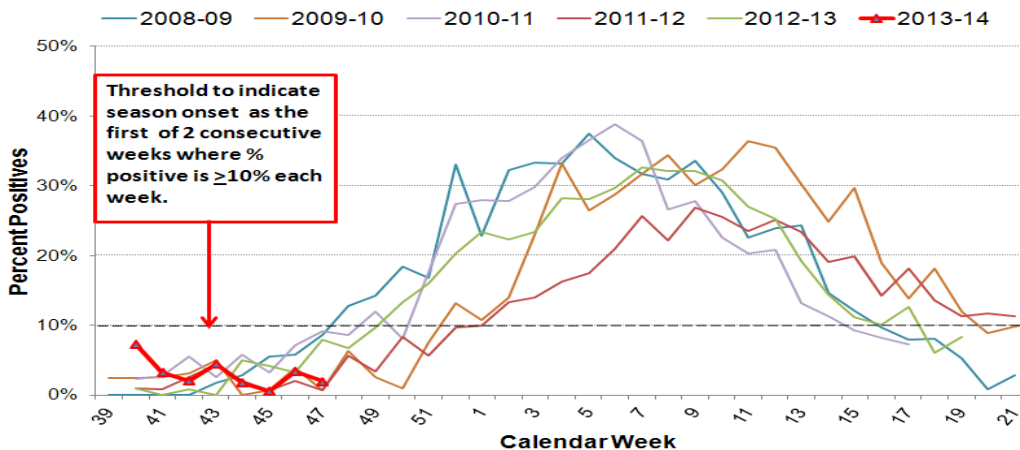


Published November 27, 2013

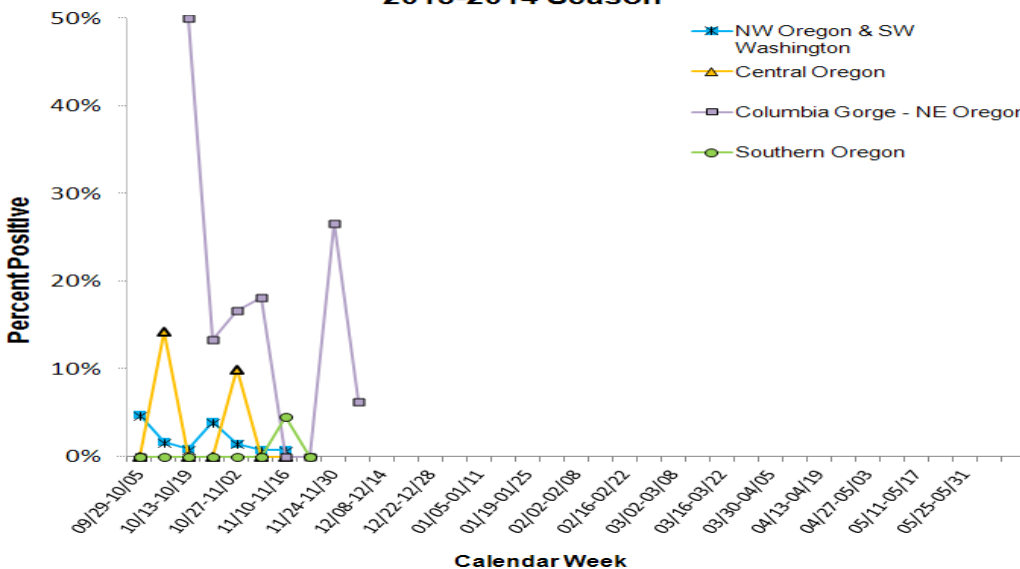
Region	Week 47: Nov 17—23, 2013			2013—2014 Cumulative	
	# Labs Detecting RSV	# RSV tests Performed	# RSV tests Positive (%)	# RSV tests Performed	# RSV tests Positive (%)
NW Oregon-SW Washington:	2	162	3 (2%)	971	18 (2%)
Central Oregon:	0	9	0	60	2 (3%)
Columbia Gorge-NE Oregon:	1	16	1 (6%)	101	14 (14%)
Southern Oregon:	0	17	0	121	1 (1%)
<b>Regional Totals:</b>	<b>3</b>	<b>204</b>	<b>4 (2%)</b>	<b>1253</b>	<b>35 (3%)</b>

**Week 47 data: (2%) test detected RSV, as reported by 22/22 sentinel labs.**

**Respiratory Syncytial Virus Surveillance  
Percent Positive RSV by Week  
Oregon and SW Washington,  
2013-2014 Season**



**Respiratory Syncytial Virus Surveillance  
Percent Positive RSV by Week and Region  
2013-2014 Season**



2013-14 RSV reporting in Oregon began the week beginning September 29, 2013. Reports may be based upon rapid tests, DFA, cultures and other test types. The test methods used vary from laboratory to laboratory. The total number of tests may not reflect the total number of patients tested. Laboratories reporting to the Oregon Health Authority/PHD now include 22 laboratories in Oregon and SW Washington. Their weekly participation involves reporting the number of RSV tests conducted by their lab and of those, the number testing positive for RSV. For more information regarding Oregon RSV surveillance, please see: <http://public.health.oregon.gov/DiseasesConditions/CommunicableDisease/DiseaseSurveillanceData/Pages/RespiratorySyncytialVirusSurveillance-Data.aspx>.

As defined by CDC, the "RSV season onset is the first of 2 consecutive weeks during which the mean percentage of specimens testing positive for RSV antigen is  $\geq 10\%$ . RSV season offset is the last of 2 consecutive weeks during which the mean percentage of positive specimens is  $< 10\%$ ." This definition has been adapted for our surveillance purposes; data reported in this report include the mean percentage of specimens testing positive by region.

RSV surveillance is also conducted by the National Respiratory and Enteric Virus Surveillance System (NREVSS), with eight Oregon labs reporting passively. Data from that surveillance system is available on CDC's website. NREVSS RSV surveillance: <http://www.cdc.gov/surveillance/nrevss/rsv/> (<http://www.cdc.gov/surveillance/nrevss/rsv/default.html>).

# RSV-OREGON

Oregon's Weekly Respiratory Syncytial Virus Surveillance Report  
Oregon Public Health Division/

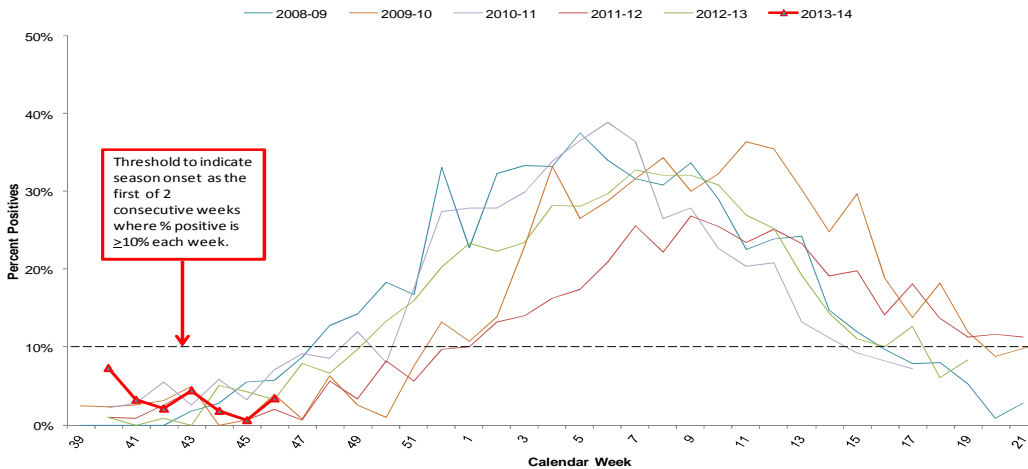


Published November 20, 2013

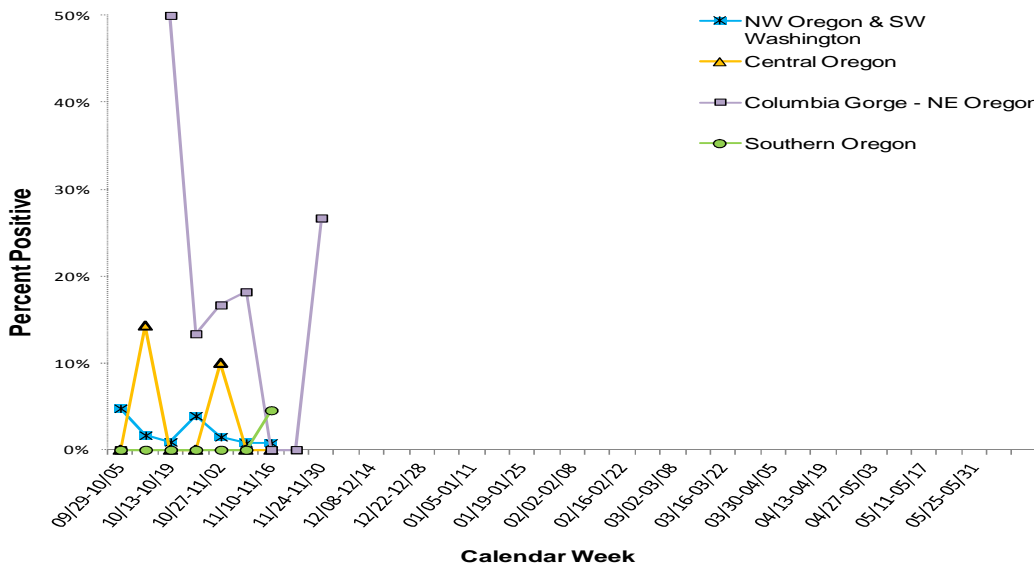
Region	Week 46: Nov 10—16, 2013			2013—2014 Cumulative	
	# Labs Detecting RSV	# RSV tests Performed	# RSV tests Positive (%)	# RSV tests Performed	# RSV tests Positive (%)
NW Oregon-SW Washington:	1	126	1(1%)	809	15 (2%)
Central Oregon:	0	13	0	51	2 (4%)
Columbia Gorge-NE Oregon:	1	15	4 (27%)	85	13 (15%)
Southern Oregon:	1	22	1 (5%)	104	1 (1%)
<b>Regional Totals:</b>	<b>3</b>	<b>176</b>	<b>6 (3%)</b>	<b>1049</b>	<b>25 (3%)</b>

**Week 46 data: 6 (3%) test detected RSV, as reported by 22/22 sentinel labs.**

Respiratory Syncytial Virus Surveillance  
Percent Positive RSV by Week  
Oregon and SW Washington,  
2013-2014 Season



Respiratory Syncytial Virus Surveillance  
Percent Positive RSV by Week and Region  
2013-2014 Season



2013-14 RSV reporting in Oregon began the week beginning September 29, 2013. Reports may be based upon rapid tests, DFA, cultures and other test types. The test methods used vary from laboratory to laboratory. The total number of tests may not reflect the total number of patients tested. Laboratories reporting to the Oregon Health Authority/PHD now include 22 laboratories in Oregon and SW Washington. Their weekly participation involves reporting the number of RSV tests conducted by their lab and of those, the number testing positive for RSV. For more information regarding Oregon RSV surveillance, please see: <http://public.health.oregon.gov/DiseasesConditions/CommunicableDisease/DiseaseSurveillanceData/Pages/RespiratorySyncytialVirusSurveillance-Data.aspx>.

As defined by CDC, the "RSV season onset is the first of 2 consecutive weeks during which the mean percentage of specimens testing positive for RSV antigen is  $\geq 10\%$ . RSV season offset is the last of 2 consecutive weeks during which the mean percentage of positive specimens is  $< 10\%$ ." This definition has been adapted for our surveillance purposes; data reported in this report include the mean percentage of specimens testing positive by region.

RSV surveillance is also conducted by the National Respiratory and Enteric Virus Surveillance System (NREVSS), with eight Oregon labs reporting passively. Data from that surveillance system is available on CDC's website. NREVSS RSV surveillance: <http://www.cdc.gov/surveillance/nrevss/rsv/> (<http://www.cdc.gov/surveillance/nrevss/rsv/default.html>).

# RSV-OREGON

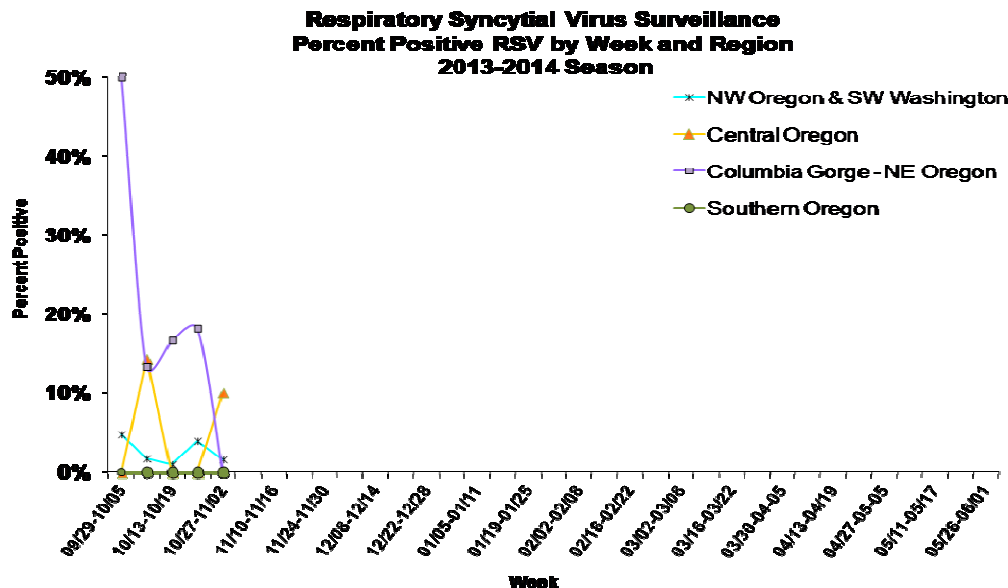
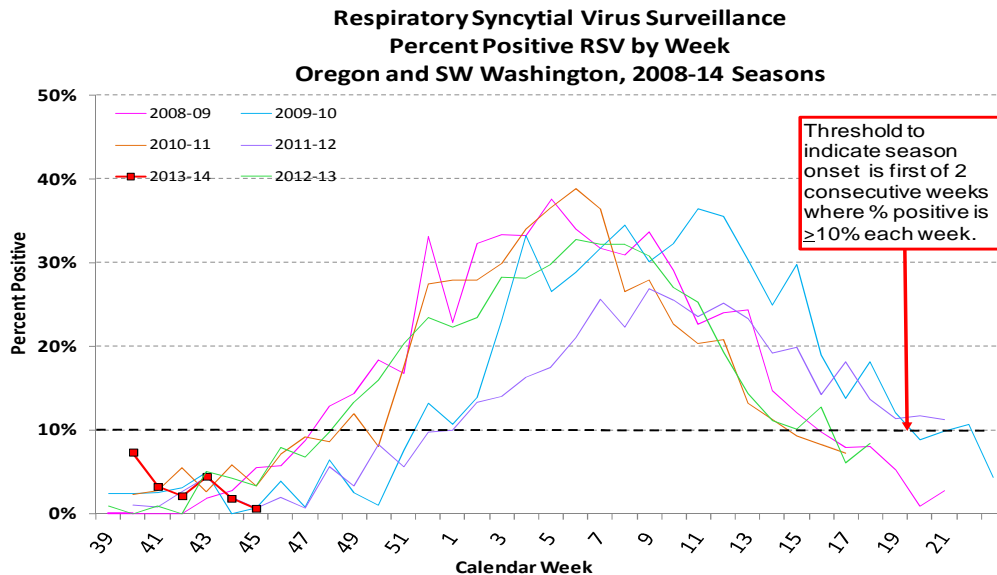
## Oregon's Weekly Respiratory Syncytial Virus Surveillance Report

Oregon Public Health Division/  
Acute & Communicable Disease Program

Published November 13, 2013

Region	Week 45: Nov 03—09, 2013			2013—2014 Cumulative	
	# Labs Detecting RSV	# RSV tests Performed	# RSV tests Positive (%)	# RSV tests Performed	# RSV tests Positive (%)
NW Oregon-SW Washington:	1	127	1 (1%)	683	14 (2%)
Central Oregon:	0	7	0	38	2 (5%)
Columbia Gorge-NE Oregon:	0	17	0	70	9 (13%)
Southern Oregon:	0	17	0	82	0 (0%)
<b>Regional Totals:</b>	<b>1</b>	<b>168</b>	<b>1 (1%)</b>	<b>873</b>	<b>25 (3%)</b>

**Week 45 data: 1 (1%) test detected RSV, as reported by 22/22 sentinel labs.**



2013-14 RSV reporting in Oregon began the week beginning September 29, 2013. Reports may be based upon rapid tests, DFA, cultures and other test types. The test methods used vary from laboratory to laboratory. The total number of tests may not reflect the total number of patients tested. Laboratories reporting to the Oregon Health Authority/PHD now include 22 laboratories in Oregon and SW Washington. Their weekly participation involves reporting the number of RSV tests conducted by their lab and of those, the number testing positive for RSV. For more information regarding Oregon RSV surveillance, please see: <http://public.health.oregon.gov/DiseasesConditions/CommunicableDisease/DiseaseSurveillanceData/Pages/RespiratorySyncytialVirusSurveillance-Data.aspx>.

As defined by CDC, the "RSV season onset is the first of 2 consecutive weeks during which the mean percentage of specimens testing positive for RSV antigen is  $\geq 10\%$ . RSV season offset is the last of 2 consecutive weeks during which the mean percentage of positive specimens is  $< 10\%$ ." This definition has been adapted for our surveillance purposes; data reported in this report include the mean percentage of specimens testing positive by region.

RSV surveillance is also conducted by the National Respiratory and Enteric Virus Surveillance System (NREVSS), with eight Oregon labs reporting passively. Data from that surveillance system is available on CDC's website. NREVSS RSV surveillance: [<http://www.cdc.gov/surveillance/nrevss/rsv/>] [<http://www.cdc.gov/surveillance/nrevss/rsv/default.html>].

# RSV-OREGON

## Oregon's Weekly Respiratory Syncytial Virus Surveillance Report

Oregon Public Health Division/  
Acute & Communicable Disease Program

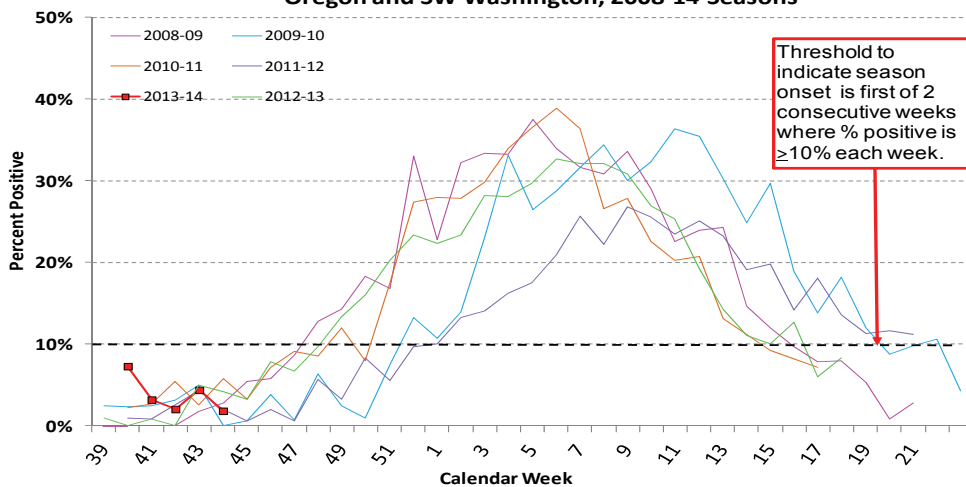


Published November 06, 2013

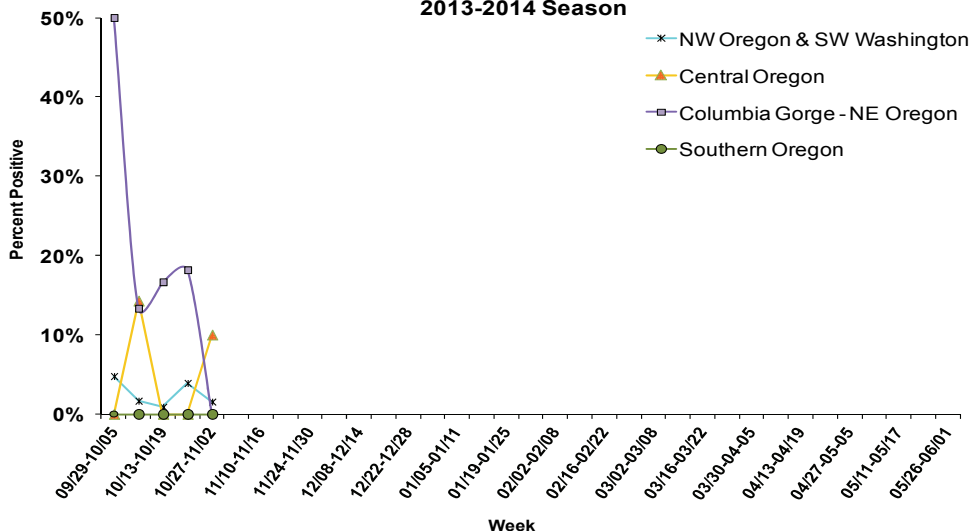
Region	Week 44: Oct. 27 – Nov 02, 2013			2013—2014 Cumulative	
	# Labs Detecting RSV	# RSV tests Performed	# RSV tests Positive (%)	# RSV tests Performed	# RSV tests Positive (%)
NW Oregon-SW Washington:	2	129	2 (2%)	551	13 (2%)
Central Oregon:	1	10	1 (10%)	31	2 (6%)
Columbia Gorge-NE Oregon:	0	9	0	53	9 (17%)
Southern Oregon:	0	13	0	65	0 (0%)
<b>Regional Totals:</b>	<b>3</b>	<b>160</b>	<b>3 (2%)</b>	<b>700</b>	<b>24 (3%)</b>

**Week 44 data: 3 of 161 (2%) tests detected RSV, as reported by 21/22 sentinel labs.**

Respiratory Syncytial Virus Surveillance  
Percent Positive RSV by Week  
Oregon and SW Washington, 2008-14 Seasons



Respiratory Syncytial Virus Surveillance  
Percent Positive RSV by Week and Region  
2013-2014 Season



2013-14 RSV reporting in Oregon began the week beginning September 29, 2013. Reports may be based upon rapid tests, DFA, cultures and other test types. The test methods used vary from laboratory to laboratory. The total number of tests may not reflect the total number of patients tested. Laboratories reporting to the Oregon Health Authority/PHD now include 22 laboratories in Oregon and SW Washington. Their weekly participation involves reporting the number of RSV tests conducted by their lab and of those, the number testing positive for RSV. For more information regarding Oregon RSV surveillance, please see: <http://public.health.oregon.gov/DiseasesConditions/CommunicableDisease/DiseaseSurveillanceData/Pages/RespiratorySyncytialVirusSurveillance-Data.aspx>

As defined by CDC, the "RSV season onset is the first of 2 consecutive weeks during which the mean percentage of specimens testing positive for RSV antigen is  $\geq 10\%$ . RSV season offset is the last of 2 consecutive weeks during which the mean percentage of positive specimens is  $< 10\%$ ." This definition has been adapted for our surveillance purposes; data reported in this report include the mean percentage of specimens testing positive by region.

RSV surveillance is also conducted by the National Respiratory and Enteric Virus Surveillance System (NREVSS), with eight Oregon labs reporting passively. Data from that surveillance system is available on CDC's website. NREVSS RSV surveillance: [<http://www.cdc.gov/surveillance/nrevss/rsv/>] (<http://www.cdc.gov/surveillance/nrevss/rsv/default.html>)]).

# RSV-OREGON

## Oregon's Weekly Respiratory Syncytial Virus Surveillance Report

Oregon Public Health Division/  
Acute & Communicable Disease Program

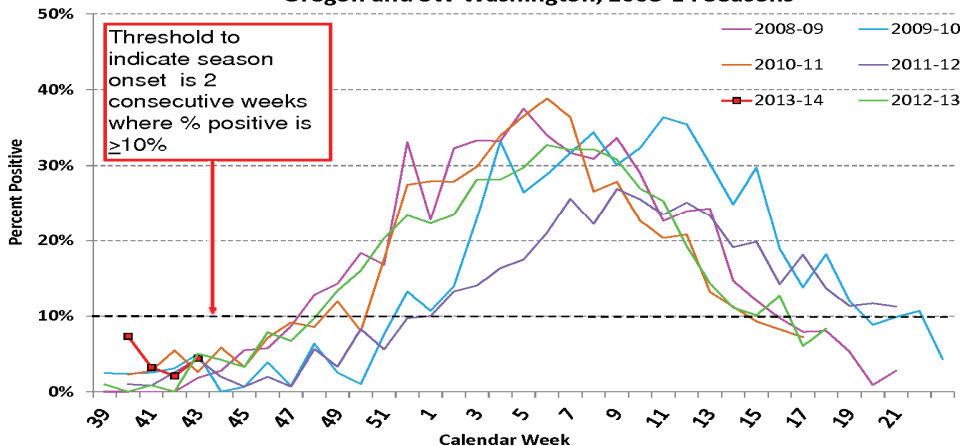


Published October 30, 2013

Region	Week 43: Oct. 20 – Oct. 26, 2013			2013—2014 Cumulative	
	# Labs Detecting RSV	# RSV tests Performed	# RSV tests Positive (%)	# RSV tests Performed	# RSV tests Positive (%)
NW Oregon-SW Washington:	2	128	5 (4%)	422	11 (3%)
Central Oregon:	0	6	0	21	1 (5%)
Columbia Gorge-NE Oregon:	2	11	2 (18%)	44	9 (20%)
Southern Oregon:	0	13	0	52	0 (0%)
<b>Regional Totals:</b>	<b>4</b>	<b>158</b>	<b>7 (4%)</b>	<b>539</b>	<b>21 (4%)</b>

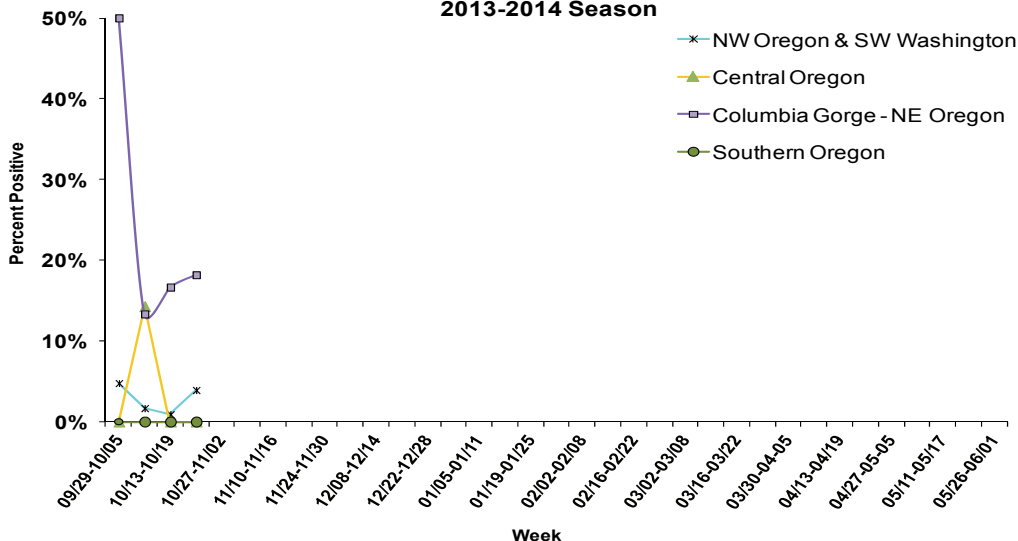
**Week 43 data: 7 of 158 (4%) tests detected RSV, as reported by 22/22 sentinel labs.**

Respiratory Syncytial Virus Surveillance  
Percent Positive RSV by Week  
Oregon and SW Washington, 2008-14 Seasons



Oregon Health Authority 10/30/2013

Respiratory Syncytial Virus Surveillance  
Percent Positive RSV by Week and Region  
2013-2014 Season



2013-14 RSV reporting in Oregon began the week beginning September 29, 2013. Reports may be based upon rapid tests, DFA, cultures and other test types. The test methods used vary from laboratory to laboratory. The total number of tests may not reflect the total number of patients tested. Laboratories reporting to the Oregon Health Authority/PHD now include 22 laboratories in Oregon and SW Washington. Their weekly participation involves reporting the number of RSV tests conducted by their lab and of those, the number testing positive for RSV. For more information regarding Oregon RSV surveillance, please see: <http://public.health.oregon.gov/DiseasesConditions/CommunicableDisease/DiseaseSurveillanceData/Pages/RespiratorySyncytialVirusSurveillance-Data.aspx>

As defined by CDC, the "RSV season onset is the first of 2 consecutive weeks during which the mean percentage of specimens testing positive for RSV antigen is  $\geq 10\%$ . RSV season offset is the last of 2 consecutive weeks during which the mean percentage of positive specimens is  $< 10\%$ ." This definition has been adapted for our surveillance purposes; data reported in this report include the mean percentage of specimens testing positive by region.

RSV surveillance is also conducted by the National Respiratory and Enteric Virus Surveillance System (NREVSS), with eight Oregon labs reporting passively. Data from that surveillance system is available on CDC's website. NREVSS RSV surveillance: [<http://www.cdc.gov/surveillance/nrevss/rsv/>] (<http://www.cdc.gov/surveillance/nrevss/rsv/default.html>).

# RSV-OREGON

## Oregon's Weekly Respiratory Syncytial Virus Surveillance Report

Oregon Public Health Division/  
Acute & Communicable Disease Program

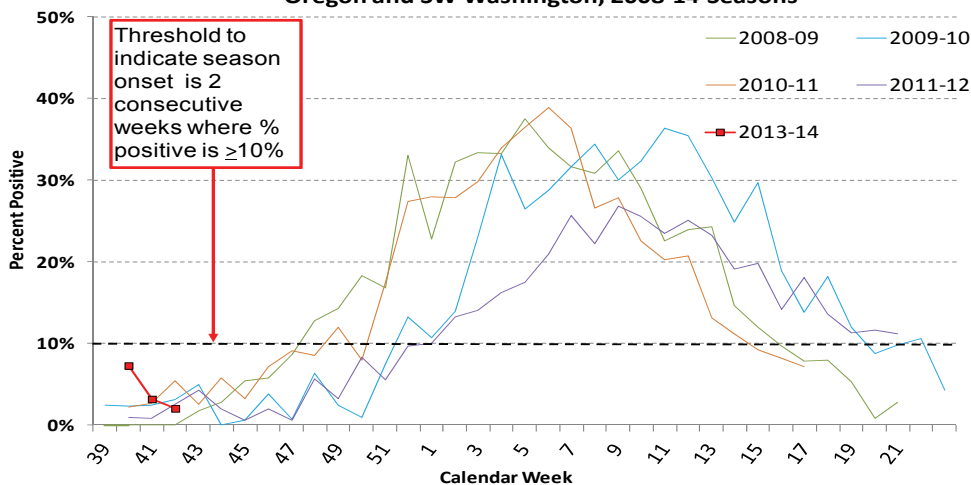


Published October 23, 2013

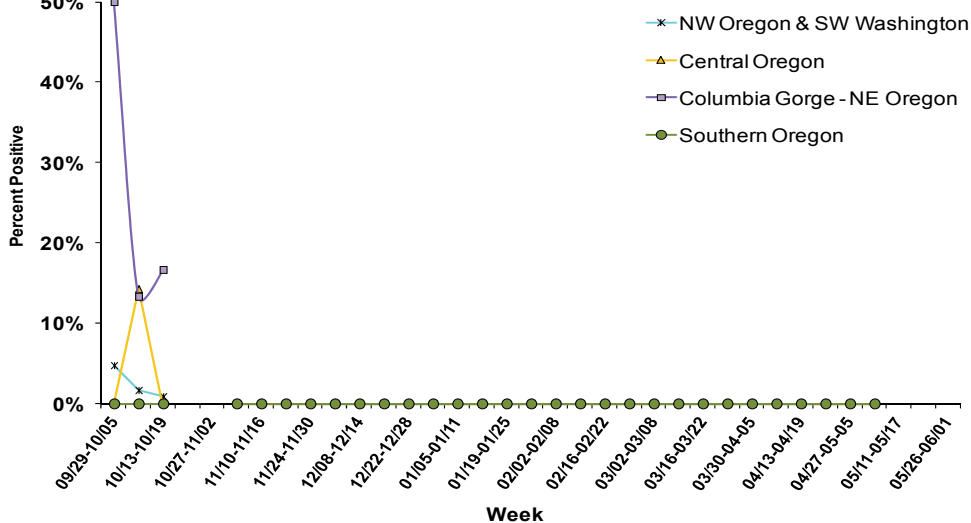
Region	Week 42: Oct. 13– Oct. 19, 2013			2013—2014 Cumulative	
	# Labs Detecting RSV	# RSV tests Performed	# RSV tests Positive (%)	# RSV tests Performed	# RSV tests Positive (%)
NW Oregon-SW Washington:	1	111	1 (1%)	294	6 (2%)
Central Oregon:	0	4	0 (0%)	15	1 (7%)
Columbia Gorge-NE Oregon:	1	12	2 (17%)	33	7 (21%)
Southern Oregon:	0	17	0 (0%)	39	0 (0%)
<b>Regional Totals:</b>	<b>3</b>	<b>144</b>	<b>3 (2%)</b>	<b>381</b>	<b>14 (4%)</b>

**Week 42 data: 3 of 144 (2%) tests detected RSV, as reported by 22/22 sentinel labs.**

Respiratory Syncytial Virus Surveillance  
Percent Positive RSV by Week  
Oregon and SW Washington, 2008-14 Seasons



Respiratory Syncytial Virus Surveillance  
Percent Positive RSV by Week and Region  
2013-2014 Season



2013-14 RSV reporting in Oregon began the week beginning September 29, 2013. Reports may be based upon rapid tests, DFA, cultures and other test types. The test methods used vary from laboratory to laboratory. The total number of tests may not reflect the total number of patients tested. Laboratories reporting to the Oregon Health Authority/PHD now include 22 laboratories in Oregon and SW Washington. Their weekly participation involves reporting the number of RSV tests conducted by their lab and of those, the number testing positive for RSV. For more information regarding Oregon RSV surveillance, please see: <http://public.health.oregon.gov/DiseasesConditions/CommunicableDisease/DiseaseSurveillanceData/Pages/RespiratorySyncytialVirusSurveillance-Data.aspx>

As defined by CDC, the "RSV season onset is the first of 2 consecutive weeks during which the mean percentage of specimens testing positive for RSV antigen is  $\geq 10\%$ . RSV season offset is the last of 2 consecutive weeks during which the mean percentage of positive specimens is  $< 10\%$ ." This definition has been adapted for our surveillance purposes; data reported in this report include the mean percentage of specimens testing positive by region.

RSV surveillance is also conducted by the National Respiratory and Enteric Virus Surveillance System (NREVSS), with eight Oregon labs reporting passively. Data from that surveillance system is available on CDC's website. NREVSS RSV surveillance: [<http://www.cdc.gov/surveillance/nrevss/rsv/>] (<http://www.cdc.gov/surveillance/nrevss/rsv/default.html>)]).

# RSV-OREGON

## Oregon's Weekly Respiratory Syncytial Virus Surveillance Report

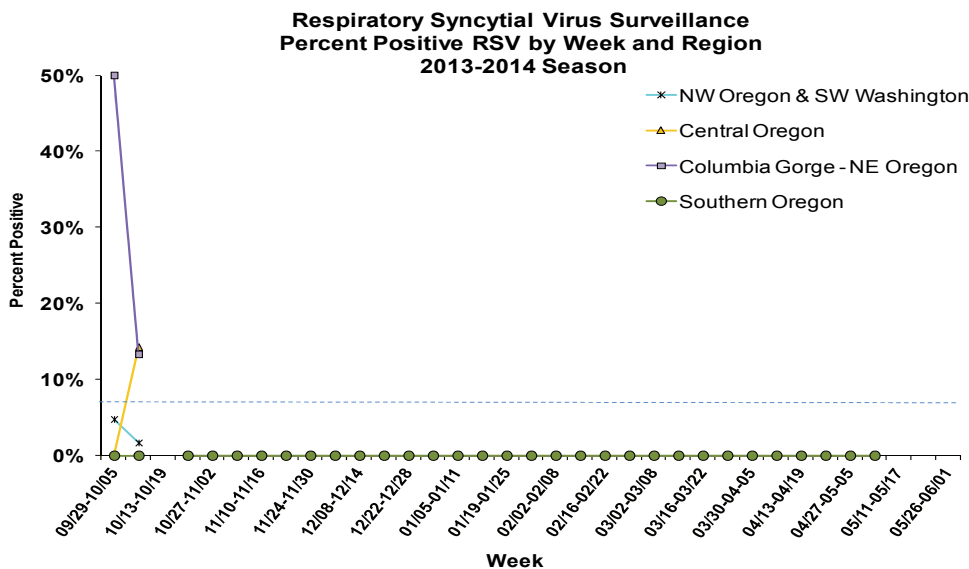
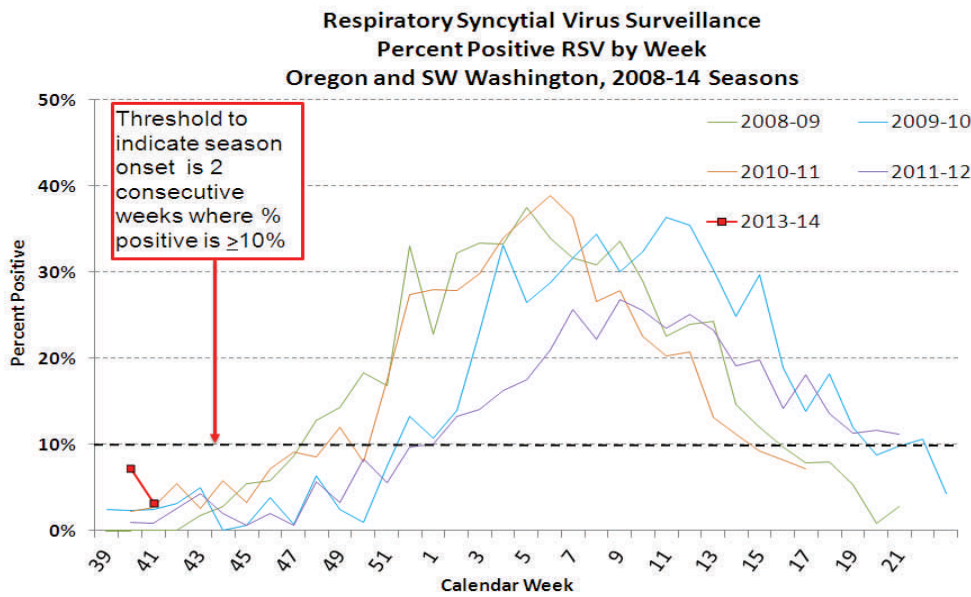
Oregon Public Health Division/  
Acute & Communicable Disease Program



Published October 17, 2013

Region	Week 41: Oct. 6– Oct. 12, 2013			2013–2014 Cumulative	
	# Labs Detecting RSV	# RSV tests Performed	# RSV tests Positive (%)	# RSV tests Performed	# RSV tests Positive (%)
NW Oregon-SW Washington:	1	120	2 (2%)	183	5 (3%)
Central Oregon:	1	7	1 (14%)	11	1 (9%)
Columbia Gorge-NE Oregon:	1	15	2 (13%)	21	5 (24%)
Southern Oregon:	0	13	0 (0%)	22	0 (0%)
<b>Regional Totals:</b>	<b>3</b>	<b>155</b>	<b>5 (3%)</b>	<b>237</b>	<b>11 (5%)</b>

**Week 41 data: 5 of 155 (3%) tests detected RSV, as reported by 20/22 sentinel labs.**



2013-14 RSV reporting in Oregon began the week beginning September 29, 2013. Reports may be based upon rapid tests, DFA, cultures and other test types. The test methods used vary from laboratory to laboratory. The total number of tests may not reflect the total number of patients tested. Laboratories reporting to the Oregon Health Authority/PHD now include 22 laboratories in Oregon and SW Washington. Their weekly participation involves reporting the number of RSV tests conducted by their lab and of those, the number testing positive for RSV. For more information regarding Oregon RSV surveillance, please see: <http://public.health.oregon.gov/DiseasesConditions/CommunicableDisease/DiseaseSurveillanceData/Pages/RespiratorySyncytialVirusSurveillance-Data.aspx>

As defined by CDC, the "RSV season onset is the first of 2 consecutive weeks during which the mean percentage of specimens testing positive for RSV antigen is  $\geq 10\%$ . RSV season offset is the last of 2 consecutive weeks during which the mean percentage of positive specimens is  $< 10\%$ ." This definition has been adapted for our surveillance purposes; data reported in this report include the mean percentage of specimens testing positive by region.

RSV surveillance is also conducted by the National Respiratory and Enteric Virus Surveillance System (NREVSS), with eight Oregon labs reporting passively. Data from that surveillance system is available on CDC's website. NREVSS RSV surveillance: [<http://www.cdc.gov/surveillance/nrevss/rsv/>] (<http://www.cdc.gov/surveillance/nrevss/rsv/default.html>)]).



# RSV-OREGON

## Oregon's Weekly Respiratory Syncytial Virus Surveillance Report

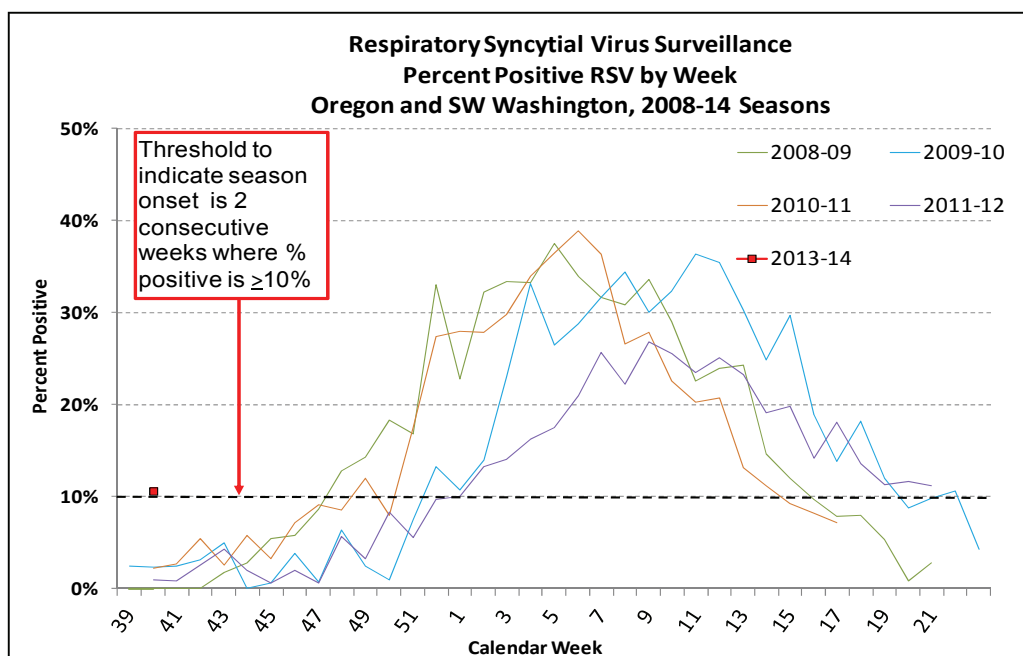
Oregon Public Health Division/  
Acute & Communicable Disease Program



Published October 9, 2013

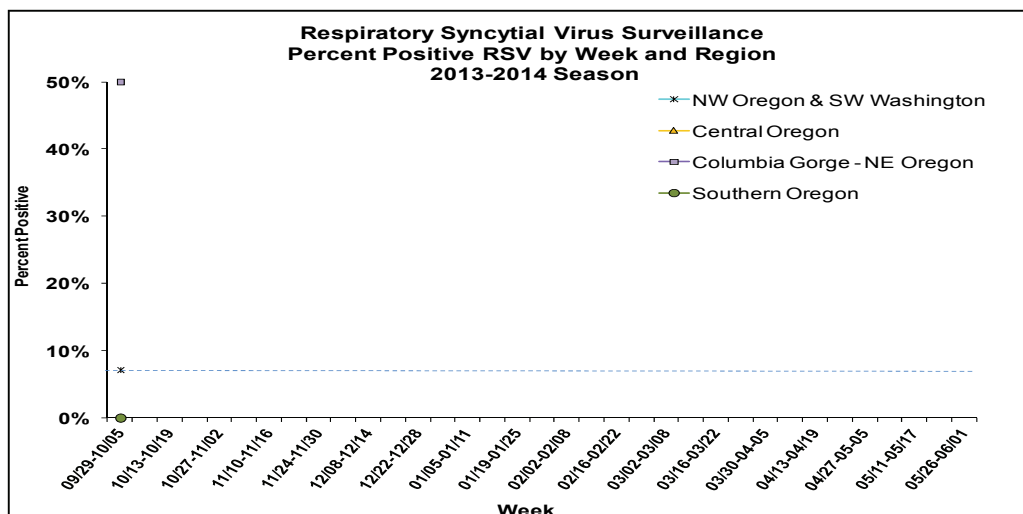
Week 40: Sept. 29– Oct. 5, 2013				2013—2014 Cumulative	
Region	# Labs Detecting RSV	# RSV tests Performed	# RSV tests Positive (%)	# RSV tests Performed	# RSV tests Positive (%)
NW Oregon-SW Washington:	1	28	2 (7%)	28	2 (7%)
Central Oregon:	0	4	0 (0%)	4	0 (0%)
Columbia Gorge-NE Oregon:	1	6	3 (50%)	6	3 (50%)
Southern Oregon:	0	9	0 (0%)	9	0 (0%)
<b>Regional Totals:</b>	<b>2</b>	<b>47</b>	<b>5 (11%)</b>	<b>47</b>	<b>5 (11%)</b>

**Week 40 data: 5 of 47 (11%) tests detected RSV, as reported by 19/22 sentinel labs.**



2013-14 RSV reporting in Oregon began the week beginning September 29, 2013. Reports may be based upon rapid tests, DFA, cultures and other test types. The test methods used vary from laboratory to laboratory. The total number of tests may not reflect the total number of patients tested. Laboratories reporting to the Oregon Health Authority/PHD now include 22 laboratories in Oregon and SW Washington. Their weekly participation involves reporting the number of RSV tests conducted by their lab and of those, the number testing positive for RSV. For more information regarding Oregon RSV surveillance, please see: <http://public.health.oregon.gov/DiseasesConditions/CommunicableDisease/DiseaseSurveillanceData/Pages/RespiratorySyncytialVirusSurveillance-Data.aspx>

As defined by CDC, the "RSV season onset is the first of 2 consecutive weeks during which the mean percentage of specimens testing positive for RSV antigen is  $\geq 10\%$ . RSV season offset is the last of 2 consecutive weeks during which the mean percentage of positive specimens is  $< 10\%$ ." This definition has been adapted for our surveillance purposes; data reported in this report include the mean percentage of specimens testing positive by region.



RSV surveillance is also conducted by the National Respiratory and Enteric Virus Surveillance System (NREVSS), with eight Oregon labs reporting passively. Data from that surveillance system is available on CDC's website. NREVSS RSV surveillance: [<http://www.cdc.gov/surveillance/nrevss/rsv/>] (<http://www.cdc.gov/surveillance/nrevss/rsv/default.html>).