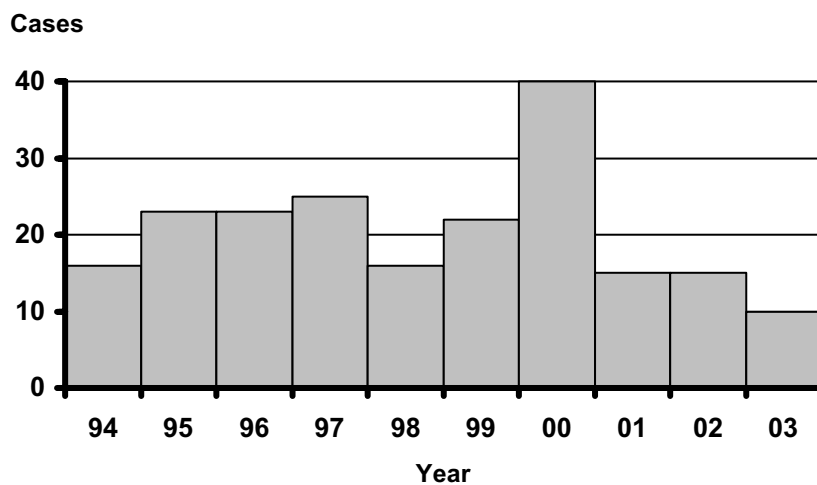


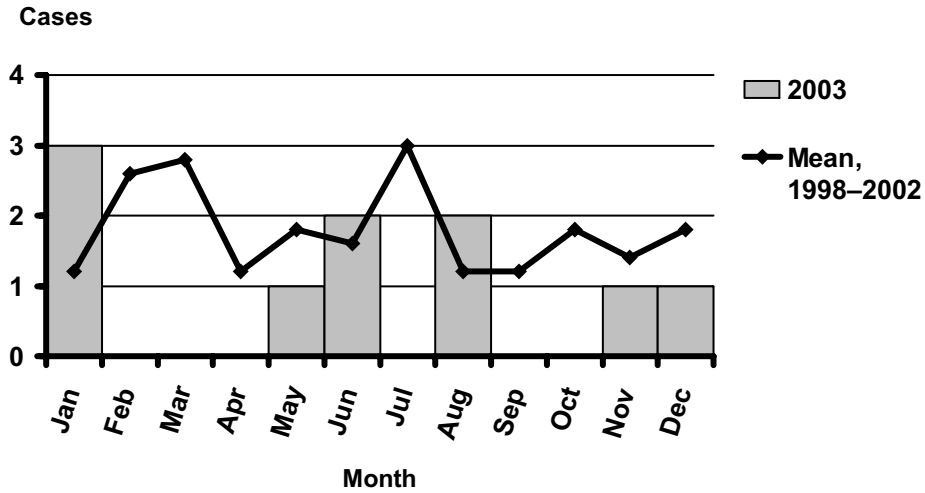
Malaria

Worldwide, malaria is one of the most devastating of the communicable diseases, causing at least 1,000,000 deaths annually, not to mention an enormous burden of disability and medical costs. While transmission has not been documented in Oregon for decades, malaria remains the most commonly reported vector-borne disease in our state — all cases resulting from exposures outside the United States. Competent anopheline mosquitoes are resident in Oregon, so limited local transmission remains a theoretical possibility. Rates in Oregon are similar to the national average. Surveillance data are contributed to the national database, which is used to tailor recommendations for prophylaxis and treatment.

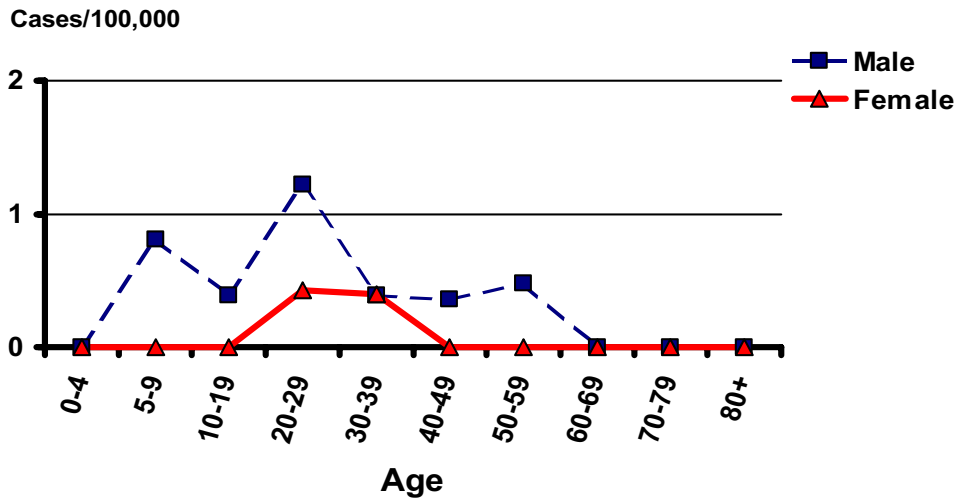
**Malaria
by Year
Oregon, 1994–2003**



Malaria by Onset Month Oregon, 2003



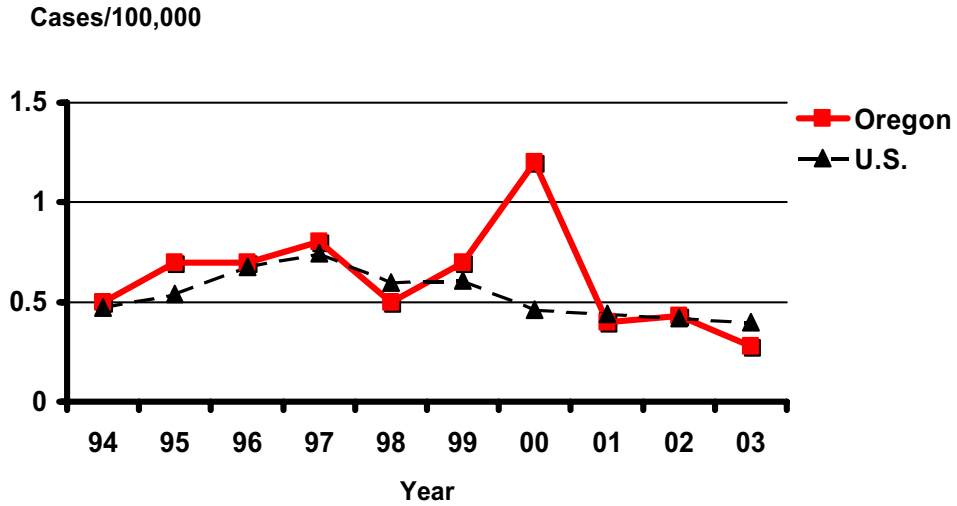
Incidence of Malaria by Age and Sex Oregon, 2003



Incidence of Malaria

Oregon vs. Nationwide

1994–2003



Malaria

by Region of Acquisition

Oregon, 2003

