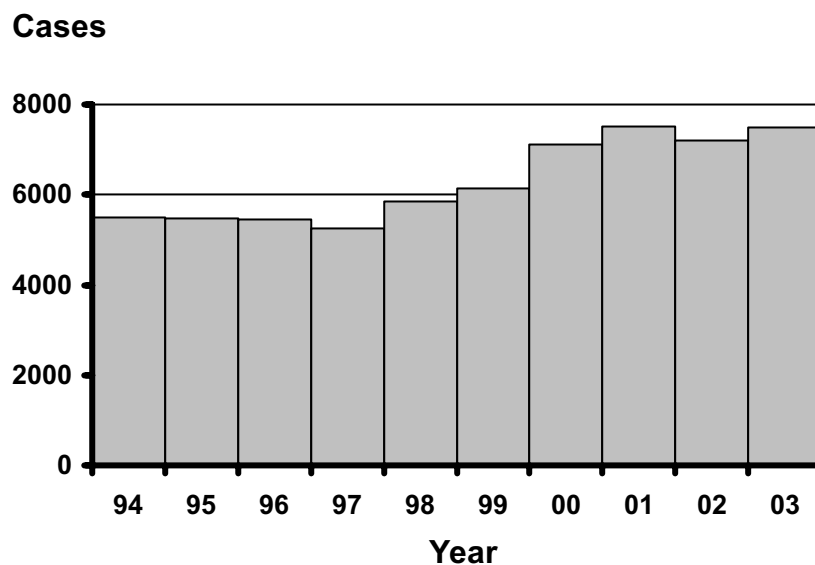


Chlamydial Infections (Chlamydia)

Chlamydia trachomatis is Oregon's most commonly reported infection. The 7,498 cases reported during 2003 were 298 (4.1%) greater than what was reported in 2002. As with gonorrhea and syphilis, chlamydial infections are transmitted by sexual contact. Chlamydial infections are likely to be silent, with neither men nor women having symptoms. However, reproductive health complications, especially among women, lead to infertility and an increased risk of tubal pregnancy.

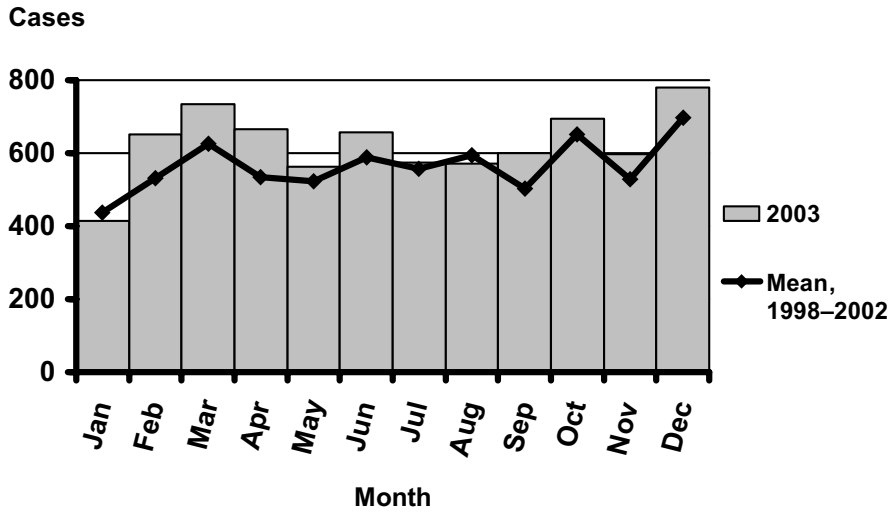
Chlamydia by Year Oregon, 1994–2003



Chlamydia

by Report Month

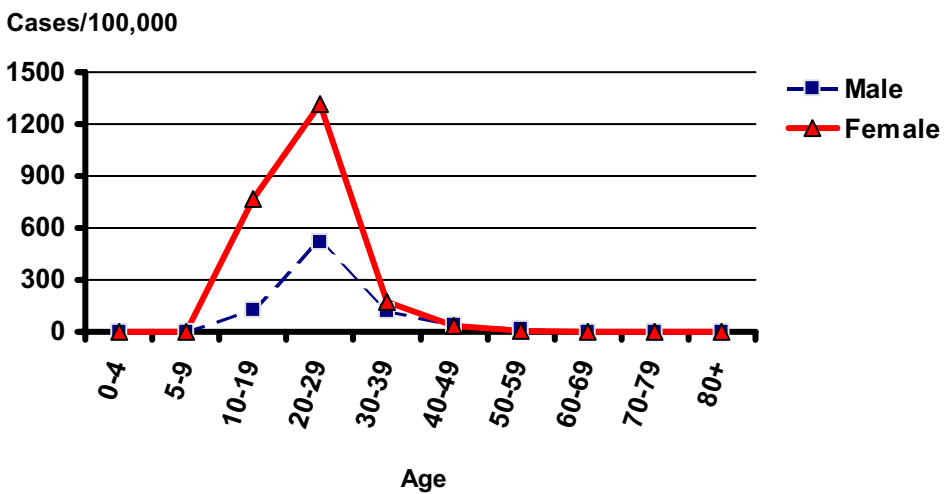
Oregon, 2003



Incidence of Chlamydia

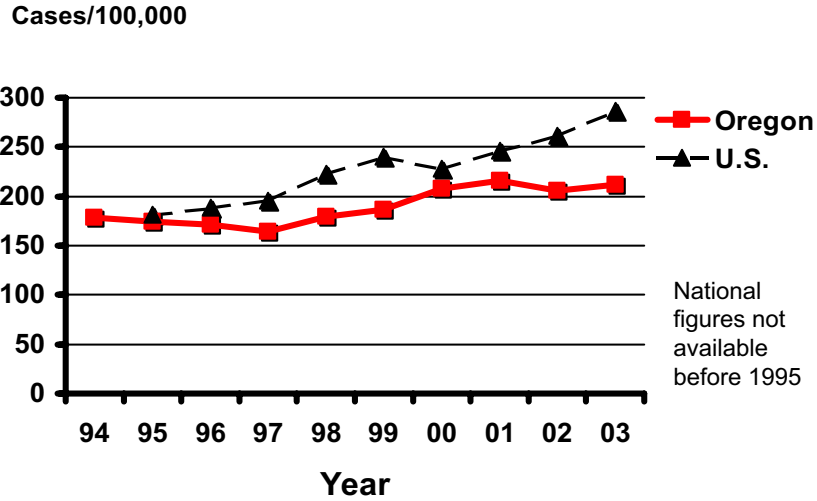
by Age and Sex

Oregon, 2003



Incidence of Chlamydia

Oregon vs. Nationwide 1994-2003



Incidence of Chlamydia by County Oregon, 2003

