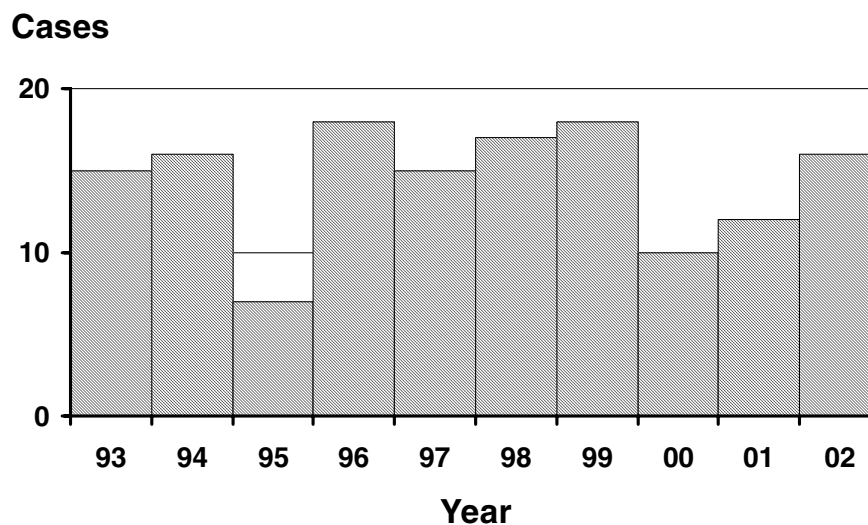


## Yersiniosis

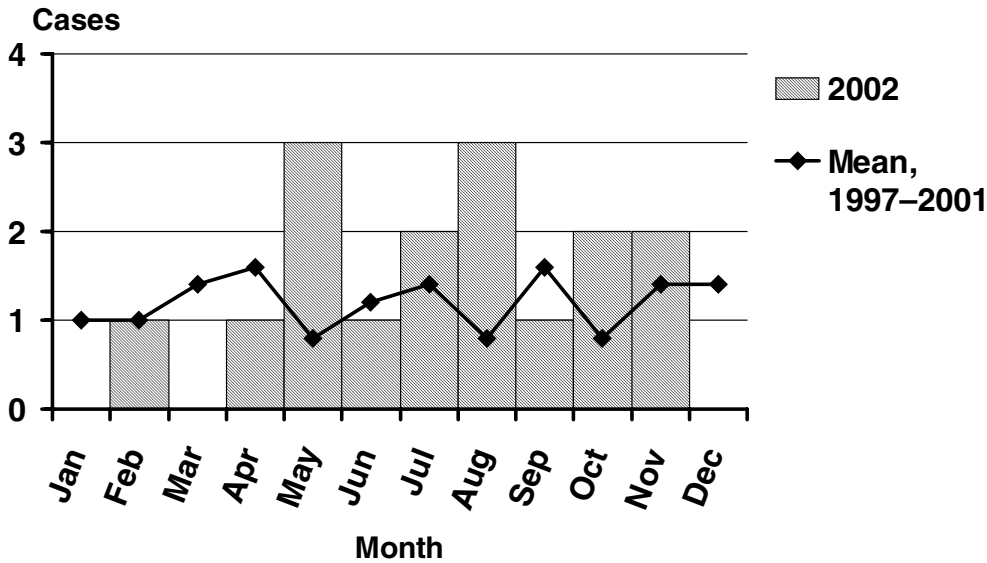
Yersiniosis is a bacterial infection characterized by (sometimes bloody) diarrhea, vomiting, and abdominal pain. The main reservoir for *Yersinia* is the pig. Transmission occurs via the fecal-oral route through contaminated food and water, and infected people or animals. Preventive measures include cooking food thoroughly, avoiding cross-contamination with raw food of animal origin, and washing hands after handling food.

The incidence of yersiniosis in Oregon has been fairly stable over the years. The rate is slightly higher in 2002 compared to the previous two years. Yersiniosis occurs throughout the year with no seasonality. By far the most common species is *Y. enterocolitica*.

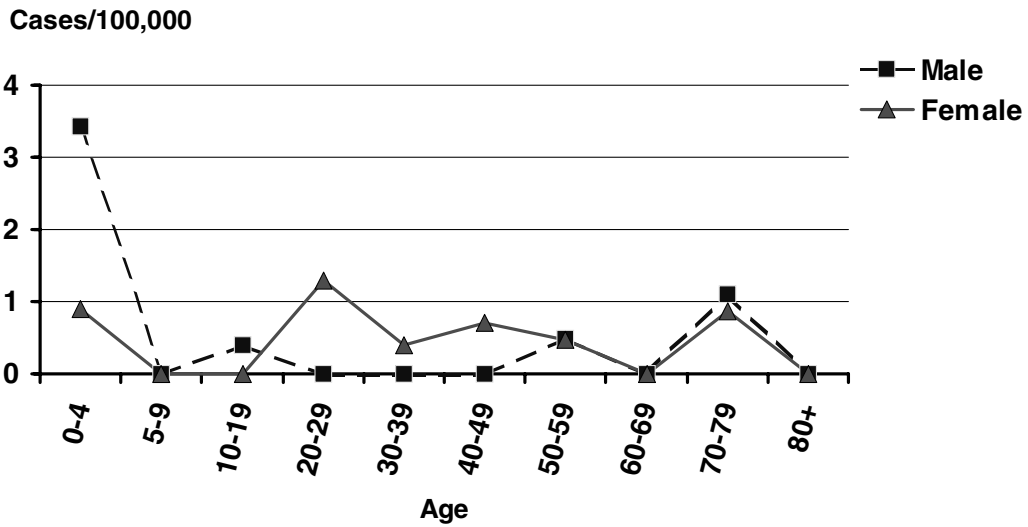
### Yersiniosis by Year Oregon, 1993–2002



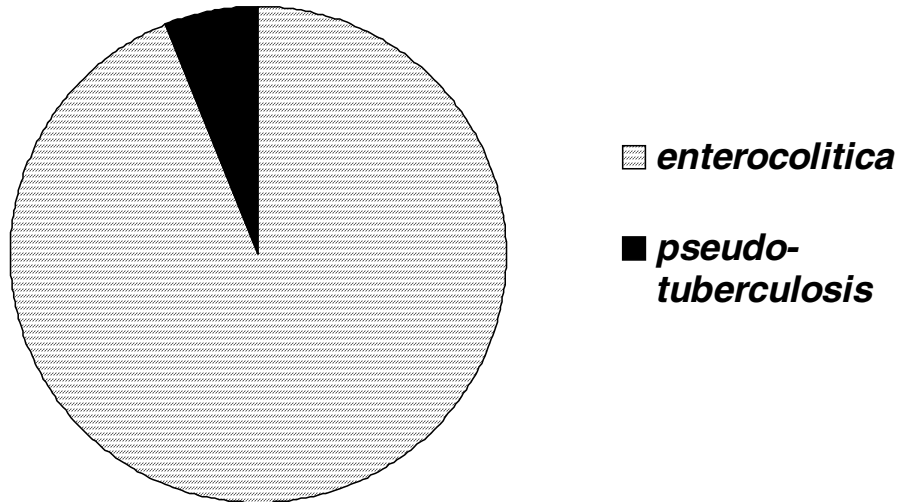
## Yersiniosis by Onset Month Oregon, 2002



## Incidence of Yersiniosis by Age and Sex Oregon, 2002



# Yersiniosis by Species Oregon, 2002



# Incidence of Yersiniosis by County Oregon, 2002

