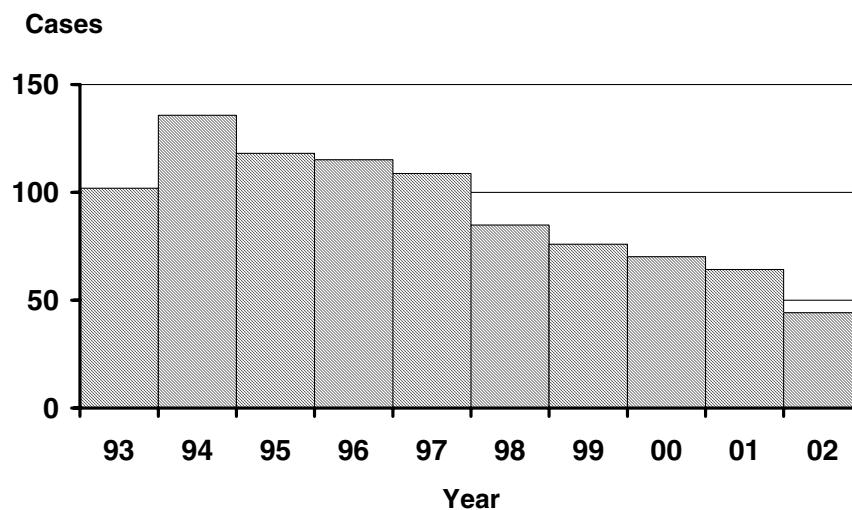


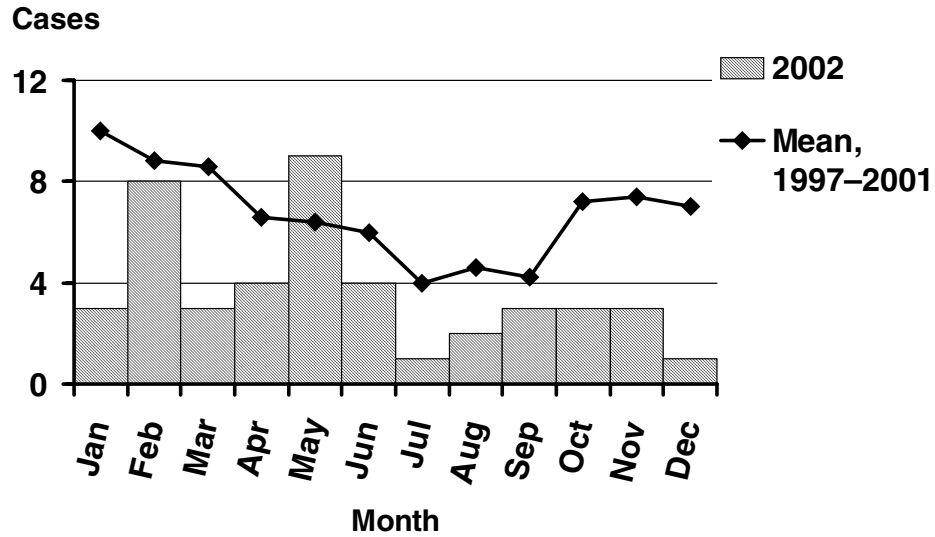
Meningococcal Disease

Reported cases of invasive meningococcal infections, including sepsis and meningitis, have declined from hyperendemic levels seen in 1993–1995 to those observed prior to the advent of the ET5 strain of serogroup B. Respiratory secretions and droplets continue to be shared among Oregonians and predispose to occurrence of secondary cases. Serogroup B organisms comprise about half of all isolates.

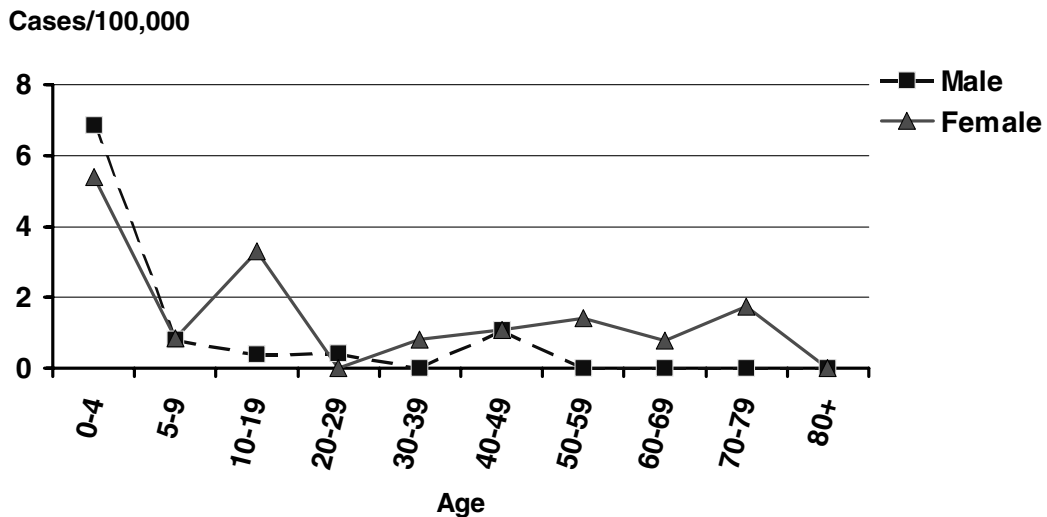
Meningococcal Disease by Year Oregon, 1993–2002



Meningococcal Disease by Onset Month Oregon, 2002

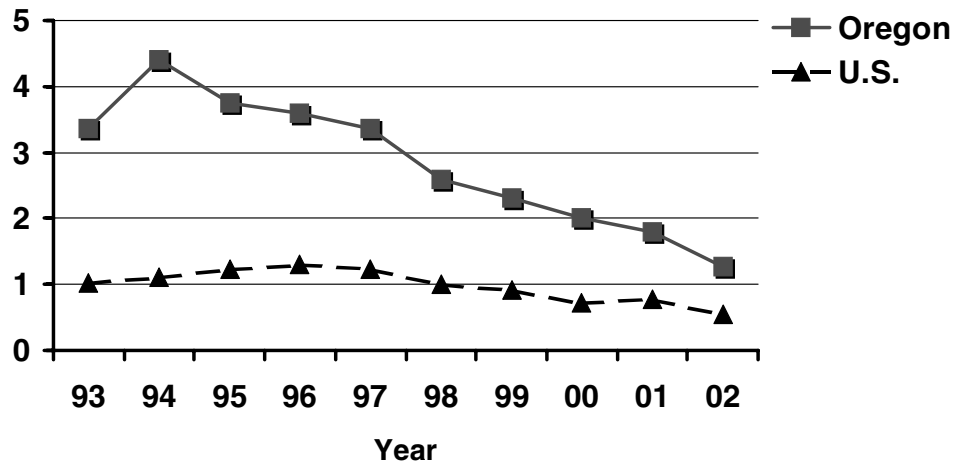


Incidence of Meningococcal Disease by Age and Sex Oregon, 2002

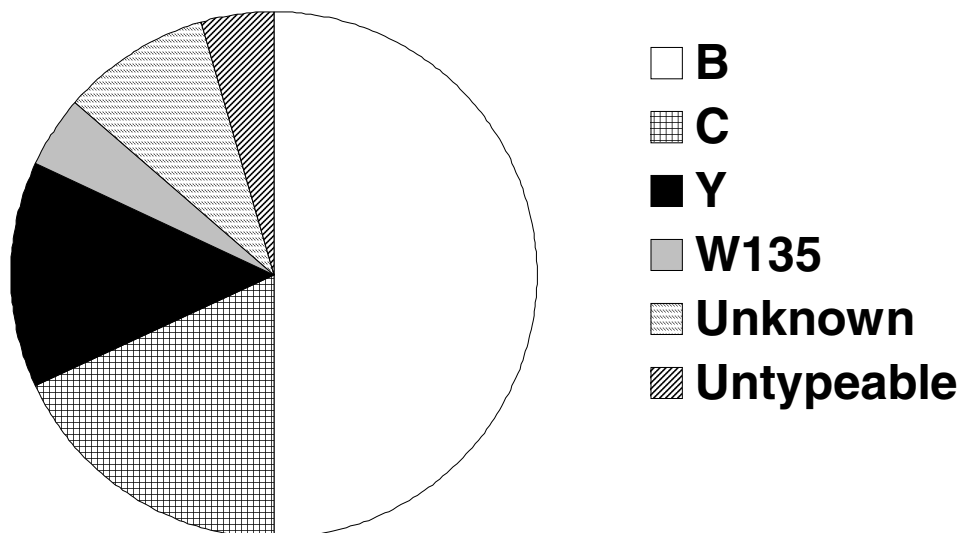


Incidence of Meningococcal Disease Oregon vs. Nationwide 1993–2002

Cases/100,000



Meningococcal Disease by Serogroup Oregon, 2002



Incidence of Meningococcal Disease by County Oregon, 2002

