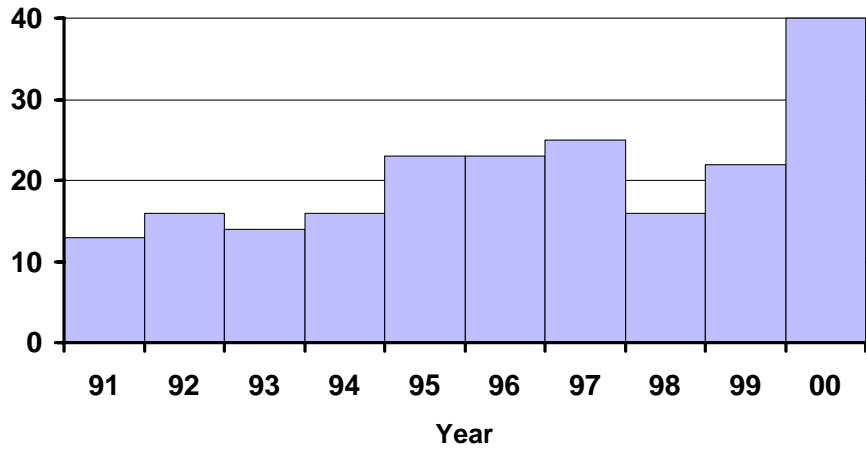


## Malaria by Year Oregon, 1991-2000

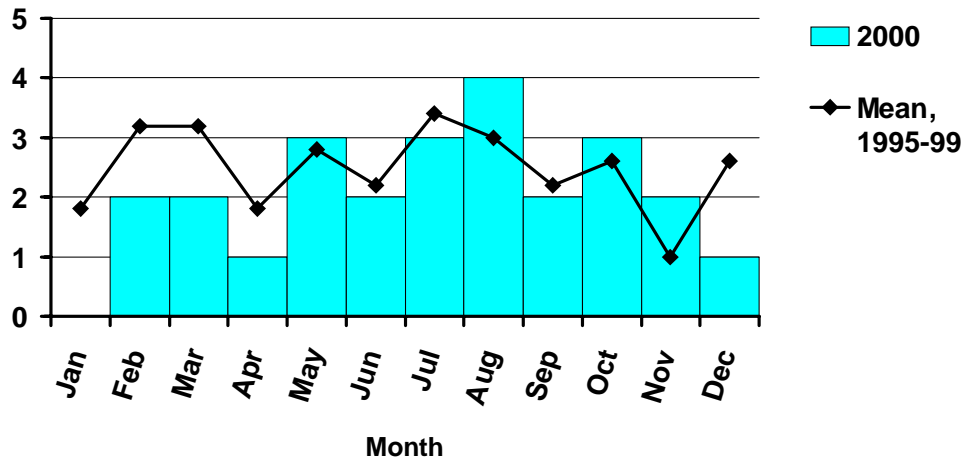
Cases



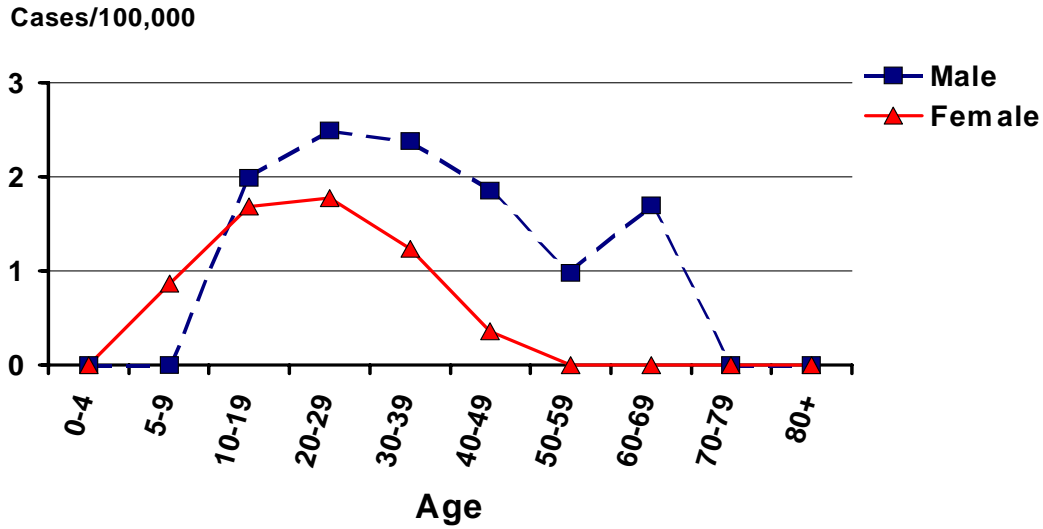
Nine-case outbreak of falciparum malaria among Washington County group that went to Africa. All survived.

## Malaria by Onset Month Oregon, 2000

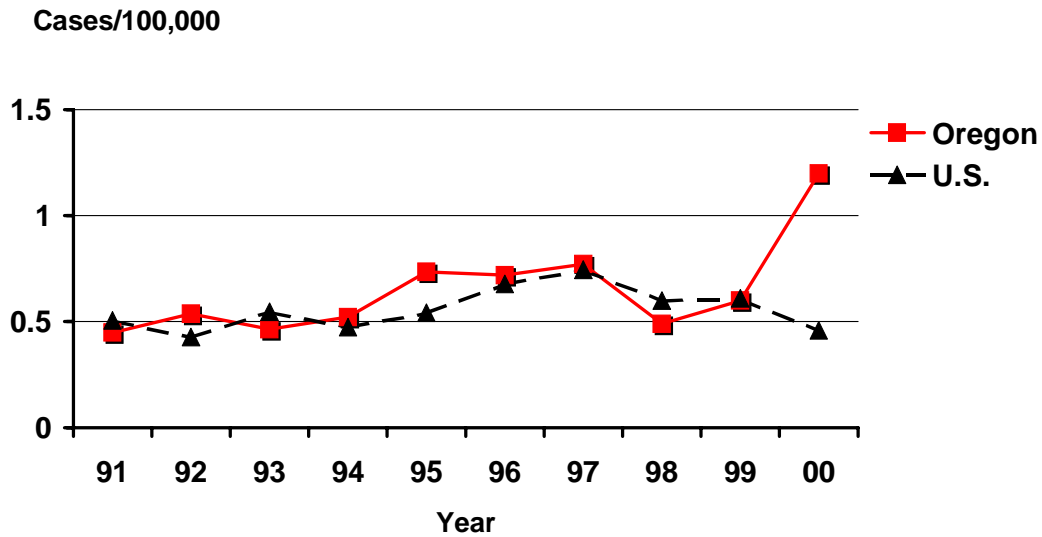
Cases



## Incidence of Malaria by Age and Sex Oregon, 2000



## Incidence of Malaria Oregon vs. Nationwide 1991-2000



# Incidence of Malaria by County Oregon, 2000

