

State Health and Housing Trends

Sandra Wilkniss, PhD
National Academy of State Health Policy

**Addressing Oregon's Housing Crisis through HRS, SHARE, ILOS: CCO
Efforts and Opportunities**
September 22, 2022



What is Supportive Housing?

Core Principles

Housing Principles

- Considered "permanent;"
- Integrated into the community;
- Tenant is offered choices;
- Heavily subsidized;
- Targets chronically homeless adults; and
- Tenants are likely to have substance use disorders (SUDs), chronic health conditions or behavioral health (BH) needs.

+

Services Principles

- Voluntary participation (Housing First approach);
- Comprehensive: Includes medical and BH, tenancy support and social services;
- Community-based or provided on site;
- Tailored to each tenant's needs so that he or she can live independently in the community;
- Care teams consist of case workers, housing specialists, clinicians; and
- May be provided through a partnership with a federally qualified health center (FQHC) or other community-based provider.



How is it Financed?



Capital

Land acquisition
Demolition
Construction “bricks and sticks”
Rehabilitation

Services

Case management, tenancy supports
Behavioral health interventions
Health Care - primary care, specialty care
Links to social services and supports

Operating

Lights, water, heat
Landlord services
Building maintenance
Debts service payments

Services Provided to Tenants of Supportive Housing*

Supportive Services Housing¹⁸

Tenancy Support

- Intake;
- Income eligibility;
- Health insurance eligibility;
- Needs assessment;
- Development of housing plan;
- Housing search;
- Housing applications;
- Landlord engagement;
- Deposits;
- Eviction prevention;
- Obtaining furniture, household items;
- Case management/care coordination;
- On-site monitoring; and
- Housing respite.

Medicaid can pay for tenancy support but most states have not currently exercised those options.

Supportive Services Health, Well-Being and Community¹⁹

Health Care

- Medical respite
- Referrals to or provision of:
 - Primary care;
 - BH;
 - Substance use services;
 - Medication management;
 - Vision; and
 - Dental.
- Documentation and application for:
 - Disability; and
 - Health insurance.
- Accompanying tenant to appointments:
 - Transportation to medical appointments;
 - Pain management; and
 - Palliative care.
- Case management/care coordination.

Behavioral Health

- Assertive Community Treatment for high mental health MH/SUD-needs populations;
- Intensive case management for mild to moderate MH/SUD needs populations;
- Mobile crisis services including peer-based crisis;
- Peer support services;
- Psychosocial rehabilitative services (e.g., supported employment, skill building interventions, community supports);
- Nonemergency medical transportation;
- Medication services including medication management and reconciliation;
- SUD services (e.g., medication-assisted treatment for opioid dependence);
- Individual and group therapies (e.g. integrated dual disorders treatment, illness management and recovery); and
- Case management/care coordination.

Referrals to Social Support

- Employment supports;
- Apprenticeships;
- Education supports;
- Nutrition education, including grocery shopping;
- Legal services;
- Budgeting and finances;
- Documentation and application for food stamps;
- Family counseling, mediation;
- Crisis management;
- Transportation (job-related);
- Access to child care;
- Activities of daily living; and
- Case management/care coordination.

Many Medicaid programs pay for supportive services related to physical health and BH as well as referrals to community-based services, but most do not reimburse for tenancy support.

*Not exhaustive list, examples of commonly offered services
Source: NGA health and housing roadmap.

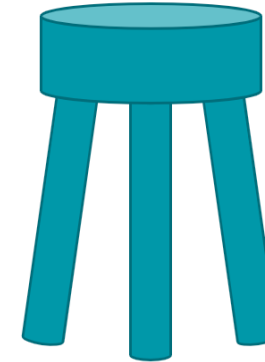
Louisiana

- Louisiana leveraged additional federal resources in the wake of Hurricane Katrina to provide PSH to people with complex care needs.
- The state utilized a variety of housing subsidies (LIHTC, Vouchers, 811) and braided funding for services.
- Program outcomes include:
 - 24 percent reduction in Medicaid acute care costs (2011–2012)
 - 96 percent housing retention rate
 - 61 percent increase in household income in New Orleans

Louisiana PSH - Braided Funding Model

Capital

- Low Income Housing Tax Credit (LIHTC)
- Home Investment Partnership Program (HOME)
- Housing Trust Fund (HTF)
- Community Development Block Grant (CDBG)



Tenancy and Other Supports

- Medicaid State Plan
- Medicaid Waivers
- Ryan White
- Veteran's Affairs
- Community Development Block Grant (CDBG)

Rental Assistance

- Project-Based Vouchers (2,000)
- 811 Project Rental Assistance (200)
- Continuum of Care (CoC) PSH Rental Assistance (1,000)
- Section 8 (50)
- State-funded rental assistance for SMI (100)
- Non-Elderly Disabled Mainstream Vouchers (50)
- LIHTC 20-30% AMI



NATIONAL ACADEMY
FOR STATE HEALTH POLICY

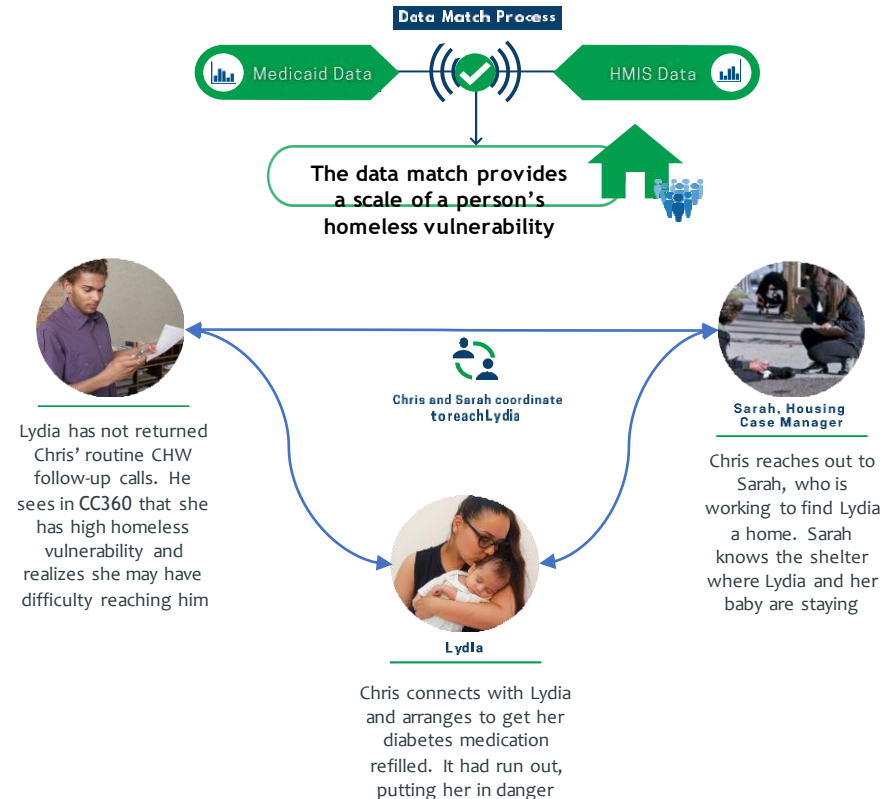
Washington

- [Foundational Community Supports Program \(1115 waiver\)](#)
- Supportive housing services include:
 - Housing assessments and planning, outreach to landlords, connecting with community resources, housing application assistance and education.
- [Evaluation of 1,736 program participants](#) found increased transition out of homelessness and an association between reduction in outpatient ED and inpatient utilization.

Michigan

- Interagency Council on Homelessness
- 2,500+ PSH units
- Data driven approach to target housing services
 - all counties use the same HMIS vendor
 - CC360

ADDING A HOMELESS INDICATOR INTO CC360



California

- CMS approved 1115 demonstration and Medicaid Managed care section 1915(b) waivers
 - Housing supports under 1915(b)
 - Enhanced care management and
 - [community supports](#) (aka in lieu of services) may include various housing related services including:
 - housing navigation services
 - housing deposits
 - tenancy services and
 - post hospitalization short term housing

Partnering with community providers and recipients - capacity building



Relationships



Financing



Information/Data



Accountability

Resources

Washington Foundational Community Supports (FCS)

<https://www.hca.wa.gov/about-hca/healthier-washington/initiative-3-supportive-housing-and-supported-employment>

- FCS Evaluation: <https://www.dshs.wa.gov/sites/default/files/rda/reports/research-11-251.pdf>

Michigan – Interagency Homelessness Council

<https://www.michigan.gov/mcteh/0,8782,7-349-78543-401713--,00.html>

Louisiana – Braided Funding to House Complex Medicaid Beneficiaries – NASHP brief <https://www.nashp.org/wp-content/uploads/2017/05/Braiding-Funds-Louisiana.pdf>

California - **[NASHP summary of CalAIM and Housing](https://www.nashp.org/wp-content/uploads/2022/04/CalAIM-Housing_FINAL.pdf)**: https://www.nashp.org/wp-content/uploads/2022/04/CalAIM-Housing_FINAL.pdf

National Governors Association Health and Housing roadmap

<https://www.nga.org/center/publications/housing-as-health-care-a-road-map-for-states/>

THANK YOU

Contact: Sandra Wilkniss
swilkniss@nashp.org

