

# OnePierce Community Resiliency Fund

Lauren Fulton

[Lauren@onepierce.org](mailto:Lauren@onepierce.org)





## Community Resiliency Fund

OnePierce Community Resiliency Fund (OnePierce) is the program investment arm of Elevate Health. With the support of funders, OnePierce provides loans, grants and innovative funds to help community organizations provide whole-person health and bridge health equity gaps in Pierce County.



# WASHINGTON'S MEDICAID TRANSFORMATION PROGRAM (MTP)

## What is it?<sup>1</sup>

A five-year agreement between the state and Centers for Medicare & Medicaid that offers up to \$1.5bn for regional health system transformation projects that benefit Medicaid clients

1) Reproduced from Washington State Health Care Authority, available online [here](#).

## What does it do?

1. Transformation through Accountable Communities of Health
2. Long-term services & supports to increase time at home & avoid care setting escalation
3. Foundational community supports: supportive housing & supported employment

## How will it be sustained?

Demonstration extended due to COVID  
New waiver application submitted to CMS



# ACCOUNTABLE COMMUNITIES OF HEALTH (ACHs)

## What are they?

Nine regional entities developed to:

- Build capacity by addressing workforce needs, enhancing technology, and assisting value-based strategies
- Redesign care delivery around integration & coordination
- Promote prevention by targeting specific populations and regions

## How are they funded?

Payments are based on:

- Pay for Reporting: Baselineing the data
- Pay for Performance: Improving the outcomes

## How is success evaluated?

Improvement in the region on its Pay for Performance metrics over different points of time





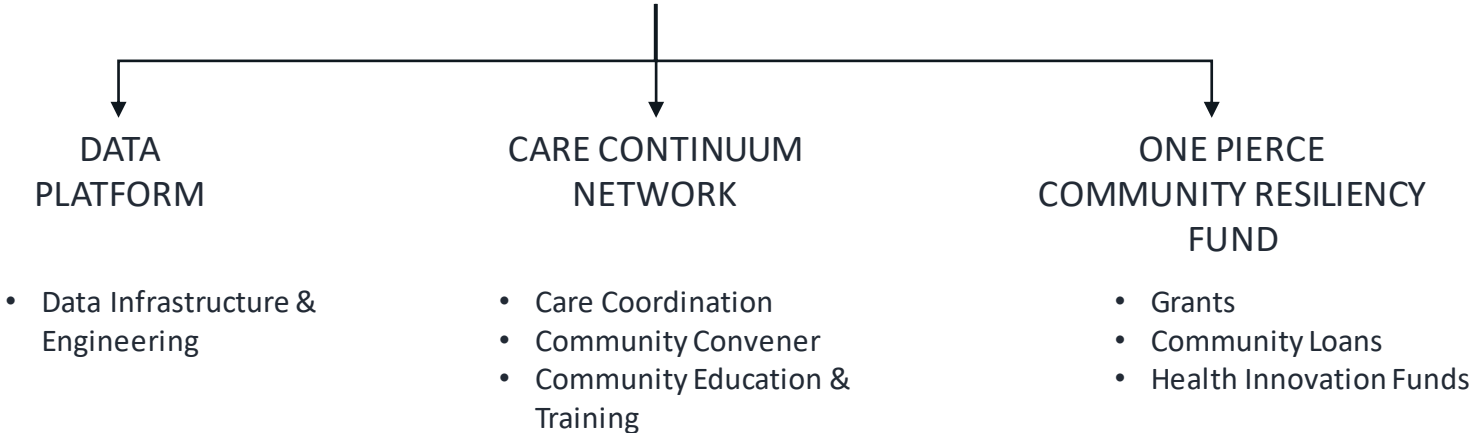
# THE NINE ACCOUNTABLE COMMUNITIES OF HEALTH<sup>1</sup>



1) Reproduced from Washington State Health Care Authority, available online [here](#).



# ONEPIERCE: THE INVESTMENT ARM OF ELEVATE HEALTH



# ELEVATE HEALTH & ONEPIERCE MISSION

## Mission

Build and drive community coalitions that transform health systems and advance whole-person health for all.

## Vision

Every person in the communities we serve lives a full, healthy and vibrant life.



# ONEPIERCE APPROACH

## VISION

Every person in the communities we serve lives a full, healthy and vibrant life.

## STRATEGY

We achieve this by focusing on 2-3 priorities each year

Priorities for 2022 include:

- Affordable & supportive housing
- Behavioral health
- Workforce development
- Healthy food access

## ACTIVITIES

We invest across our priority areas through:

- Grants
- Community loans
- Health innovation funds

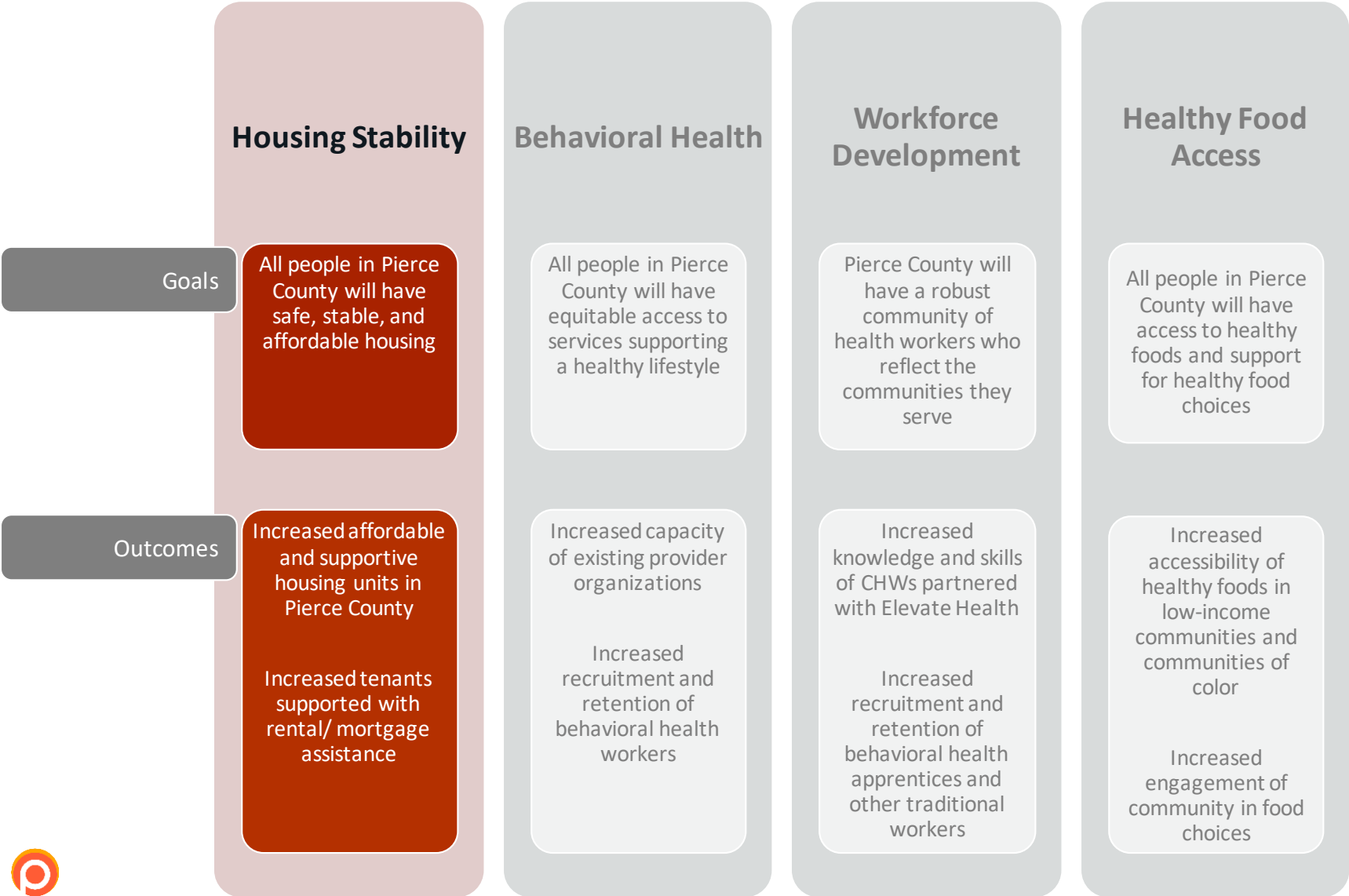
We also engage in:

- Capacity building through technical assistance
- Advocacy & education for whole-person health

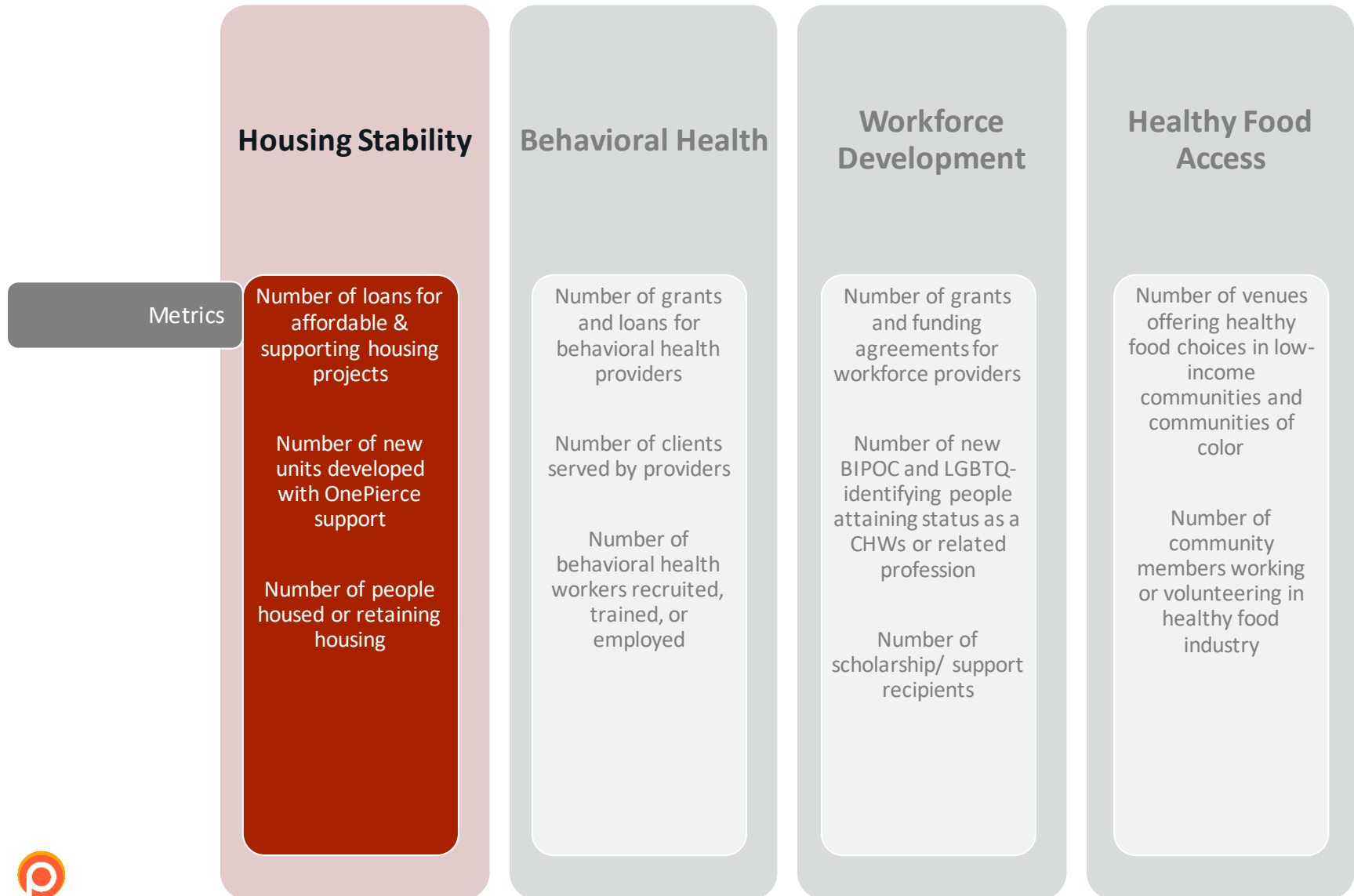




# OnePierce's Programmatic Priorities



# Measuring Impact



# GRANTS

OnePierce awarded \$200K to six grantees in its 2021 grants program, the Behavioral Health Equity Challenge

Awardee	Project Description
Tahoma Indian Center	Culturally relevant wellbeing programming for urban Native Americans
Pacific Islander Health Board of WA	Mental health support for Native Hawaiian and Pacific Islander youth
Recovery Café of Orting Valley	Youth recovery support services, partnered with Orting School District
Pierce County Library	Design and furnishing for co-location of mental health services in Sumner Library branch
RISE Center of Hilltop	Assessments and counseling services for street outreach program
First5 FUNdamentals	Baby Lounge for emotional & social support for parents of infants, with an emphasis on Spanish-speaking families

**\$200K- \$1M dedicated to annual grants**



# EXAMPLE: TACOMA URBAN NATIVE ALLIANCE

**CARVING  
AS  
MEDICINE**

with  
Rick Williams

**Tacoma Urban Native Alliance**  
(Tahoma Indian Center)

**Intertribal story pole carving with  
Rick Williams, come join Rick in a  
good way to learn about carving.**

*Carving as Medicine*

join us at...  
1809 E 31st Tacoma, WA 98404  
<https://tacomaurbannative.org>

thank you **Elevate Health** for grant funding for this project!

OnePierce extended a grant to Tacoma Urban Native Alliance in October 2021 to support culturally relevant wellbeing programming

Grant Amount	\$50,000
Grant Term	1 year
Payment Milestones	<ul style="list-style-type: none"><li>• Execution of contract</li><li>• Completion of cedar weaving class</li><li>• Commission of totem pole</li><li>• Healthy food access &amp; education class</li><li>• Final program metrics report</li></ul>



# COMMUNITY LOANS

Low-interest, low-barrier loans are most commonly bridge loans for contract delivery or pre-development loans for affordable housing

\$250K

Pre-development loans approved for 40 units of affordable & supportive housing

\$5.1M

Approved in zero-interest bridge loans for County Human Services contracts

**\$2-4M allocated for annual lending program**



## EXAMPLE: RENTAL ASSISTANCE BRIDGE LOAN



**OnePierce extended a bridge loan in December 2021 to provide rental assistance for households in advance of reimbursement by Pierce County**

Loan Amount	\$500,000
Loan Term	4 years
Interest & Fees	0% interest & no fees
Expected Impacts	Accessing \$4M County funds Rental assistance to 444 households at or below 80% of AMI



# ONEPIERCE IMPACTS (2021)





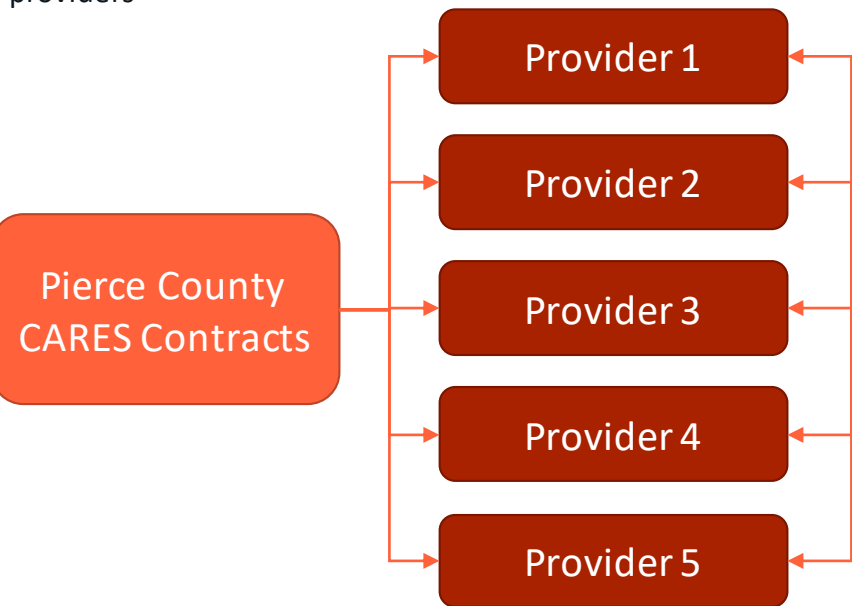
# Deep Dive: Bridge Loans

OnePierce Community Resiliency Fund

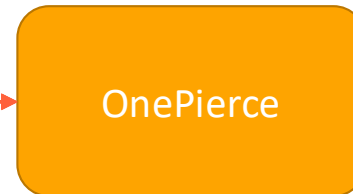
# EVOLUTION OF BRIDGE LOANS

Bridge loans developed as a public-private partnership between Pierce County, the philanthropic community, and OnePierce during COVID response

1. Pierce County contracts with providers



2. OnePierce conducts abridged due diligence on providers & offers zero-interest bridge loans



3. Family offices & foundations guarantee the bridge loans



# BRIDGE LOAN ROUNDS

Most bridge loans to date have been 0% interest and with no fees to borrowers

	Round 1 Sept 2020	Round 2 Apr 2021	Round 3 Jan 2022
Loan Capital	<ul style="list-style-type: none"><li>• \$847K to 8 organizations</li><li>• Capital provided by OnePierce</li></ul>	<ul style="list-style-type: none"><li>• \$2.63M to 6 organizations</li><li>• Capital provided by OnePierce</li></ul>	<ul style="list-style-type: none"><li>• \$2.1M to 5 organizations</li><li>• Capital provided by Ballmer Group</li></ul>
Guaranty	<ul style="list-style-type: none"><li>• Guaranty provided by co-guarantors</li></ul>	<ul style="list-style-type: none"><li>• Guaranty provided by co-guarantors</li></ul>	<ul style="list-style-type: none"><li>• No guaranty</li></ul>
Admin Costs	<ul style="list-style-type: none"><li>• Admin cost covered by PCCF grant</li></ul>	<ul style="list-style-type: none"><li>• Admin cost covered by PCCF grant</li></ul>	<ul style="list-style-type: none"><li>• Admin covered by Ballmer Group</li></ul>



# ROUND 2: HOUSEHOLDS SUPPORTED

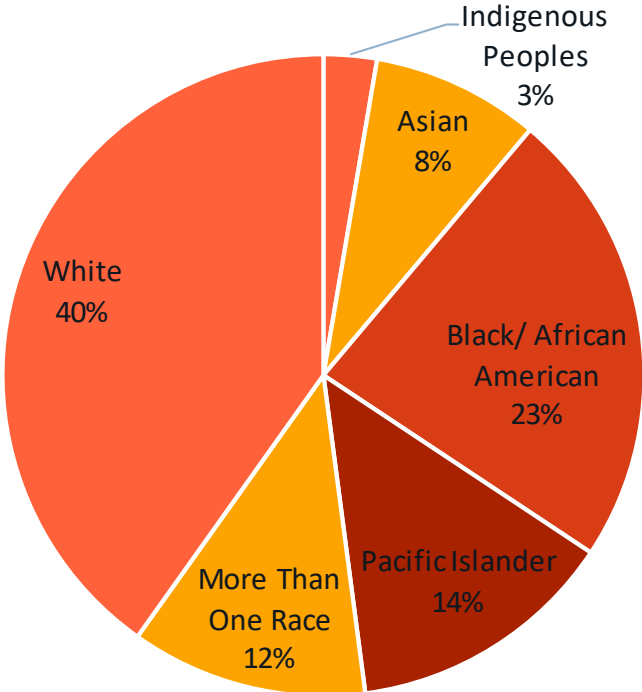
A total of **5,457 households** were supported by contracts assisted by bridge loans

14% of beneficiaries identified as Hispanic

68% of beneficiaries identified as female

18% of beneficiaries reported being 55 years or older\*

Reported Race of Beneficiaries



\*Estimate only. Age categories varied between borrowers and some categories were imperfectly matched.

# ROUND 2: IMPACTS OF BRIDGE LOANS





OnePierce