

SHARE and HRS Housing Investments

Kat Cooper, Community Engagement Coordinator

Lindsey Birch, Director of Utilization Management

Housing Investments

Health-Related Services (HRS)

- \$527,700 spent on housing in 2022
- Includes flexible services and excludes community benefit initiative (CBI)

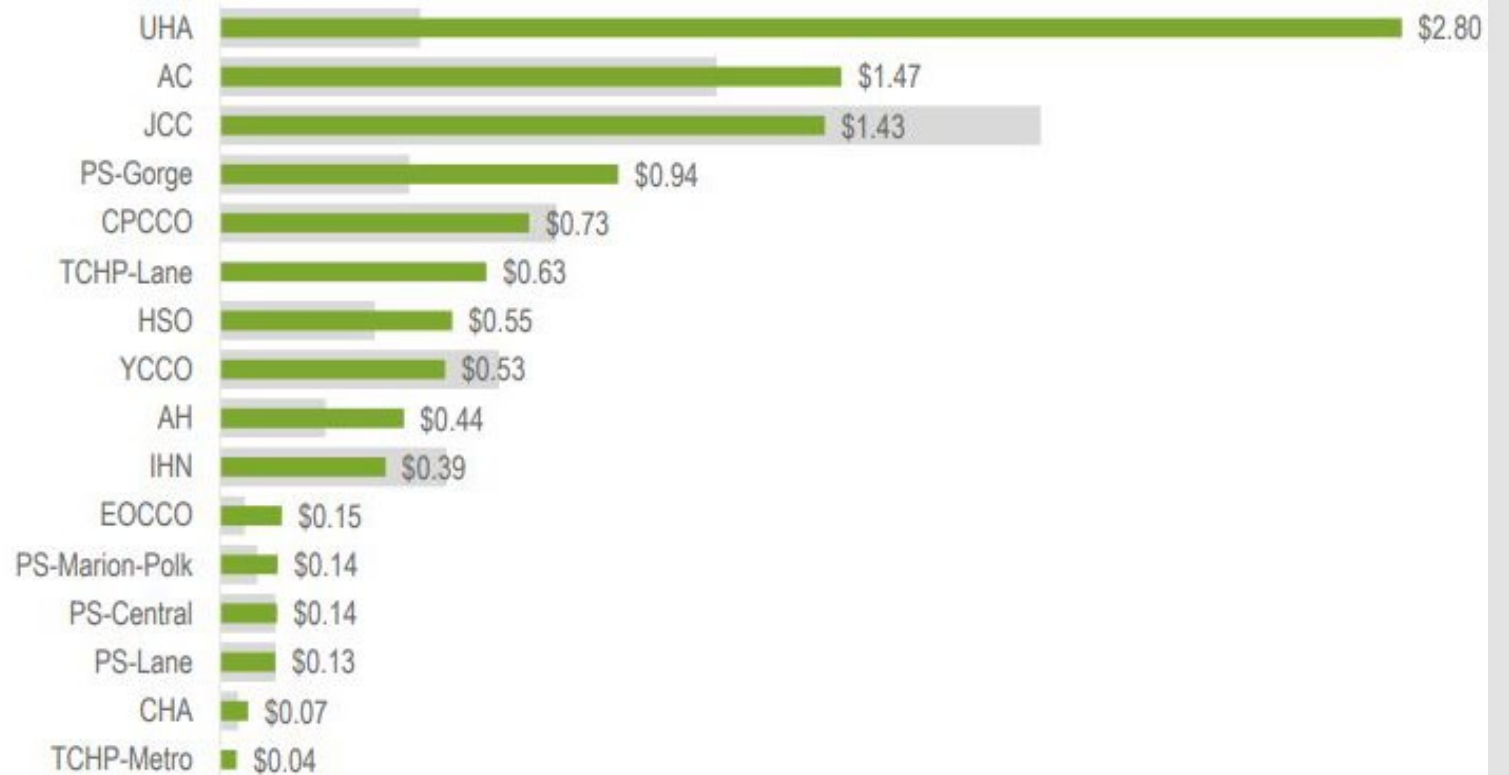
Supporting Health for All through Reinvestment (SHARE)

- \$400,000 spent on housing in 2022
 - City of Roseburg
 - Umpqua Heart
 - Adapt Integrated Healthcare

Statewide HRS Spending

Graph from OHA CCO HRS Spending Summary

PMPM FS spending increased for eight CCOs that reported HRS spending in 2020 and 2021.



Grey lines represent 2020 spending.
Green lines represent 2021 spending.

UHA HRS Housing Spending

Over \$107,800 flexible
funding for housing



Over \$527,700 flexible
funding for housing

Over \$306,600 flexible
funding for housing

UHA's HRS Flex Support Services

1. Temporary housing

Post hospitalization or ER visit

Outpatient wound care or infusion therapies

Oxford House (sober living)

Members receiving a Direct Acting Antiviral medication for Hepatitis

2. Emergency rent, utilities, and renovation

3. Care coordination and wrap around services



Flexible Service Investments 2022

61% of Flex Service Investments are for Housing Assistance

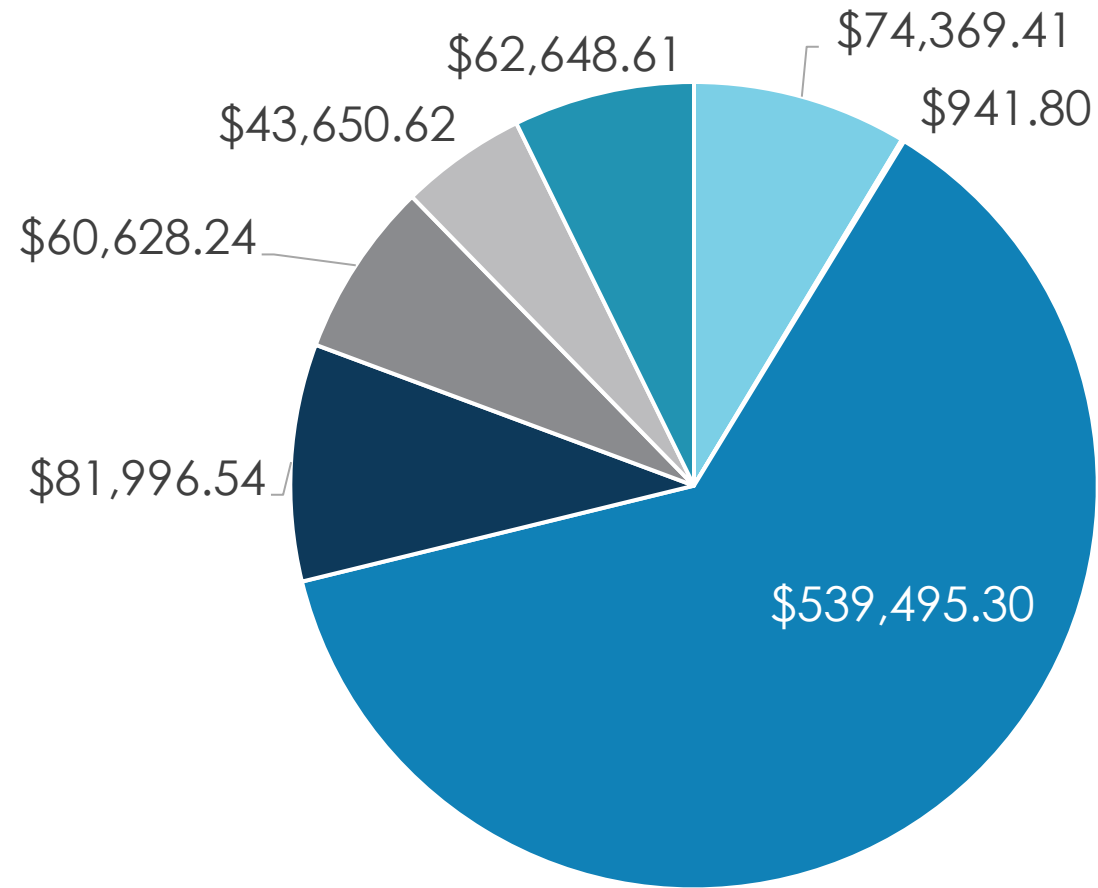
Over 500 Housing requests were fulfilled in 2022

132 Housing requests for Oxford Sober Living Houses in 2022

11 IMPACTS Members with 148 combined prior jail bookings, housed through Oxford Housing Flex Services in 2022

One IMPACTS Member spent 361 days in Jail. Upon release in mid-2022, UHA funded Oxford Housing and they have remained successfully engaged in SUD IOP treatment.

Flexible Services Investments 2022



■ Education for Health Improvement

■ Food Services & Support

■ **Housing Supports/Srvs**

■ Items for Living Environment

■ Other Non-Covered Medical Srvs

■ Other Non-Covered Social/Comm Srvs

■ Transportation Supports/Srvs



Identifying Need

Community Health Assessments
Health Risk Assessments
Interaction with Network
Workgroups & Committees



Informing Network

Member/Provider Newsletters
Social Media/Website
Unite Us
CBOs



Operationalizing Processes

Mirror UM Process
Developing Criteria
Implement into Systems

Implementation

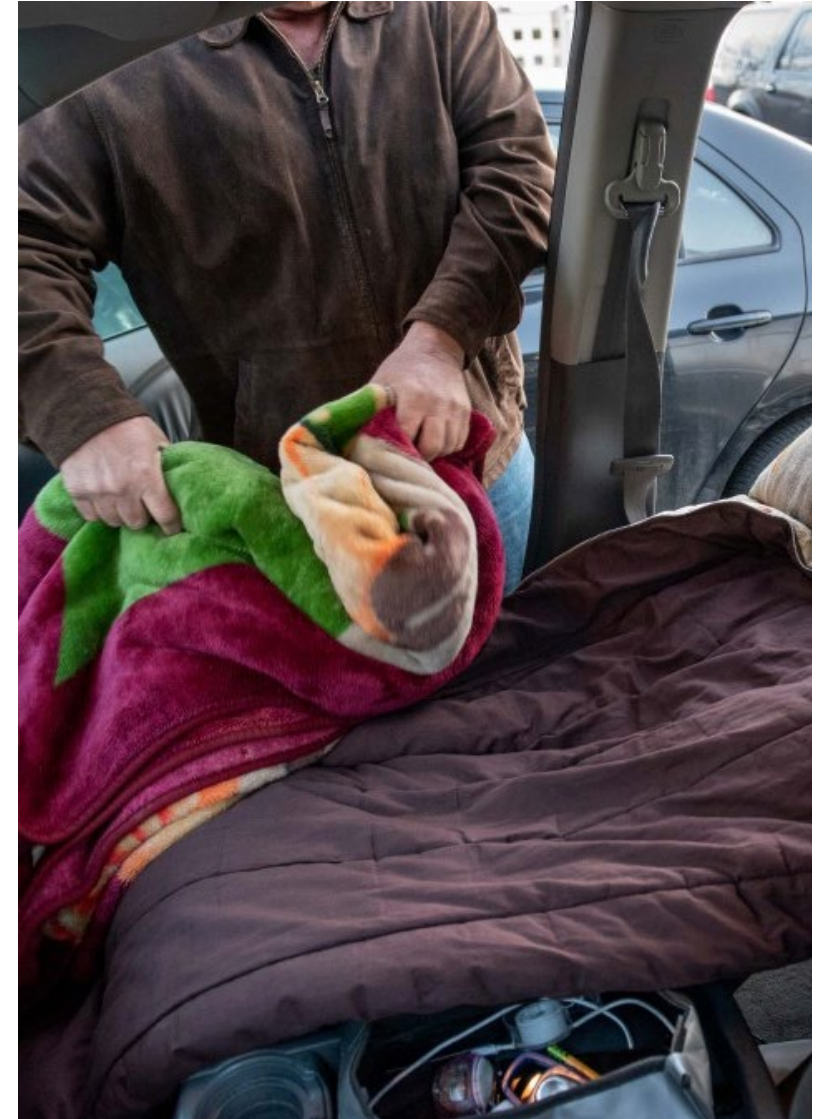


Housing Success Story

- Member identified through integration of Collective Medical ED
- Care coordination conducted health risk assessment
- Referral to flexible spending benefit
 - Vehicle repair
 - Move-in fees and first month's rent
- Found permanent housing and stable employment

Housing Success Story

- Family was living in their car, which was impounded
- UHA leveraged flex benefit care coordination
 - Four-month hotel placement
 - Behavioral health services
 - Community supports for job search
- Found job with benefits and stable housing



2022 SHARE Investments

City of Roseburg

Gary Leif Navigation Center

Umpqua Heart

Hastings Village

Adapt Integrated Healthcare

The Travel Inn

Jerry O'Sullivan



City of Roseburg: The Gary Leif Navigation Center

948 SE Mill St, Roseburg OR
97470



Umpqua Heart: Hastings Village

787 Hastings Sutherlin, OR
97479



ADAPT: The Travel Inn

1627 SE Stephens St,
Roseburg, OR 97470





Adapt Share and Related Projects

Downtown Roseburg

An Oregon leader in primary care, behavioral health care, and prevention.

PRESENTER



Jerry O'Sullivan, MBA, CPS

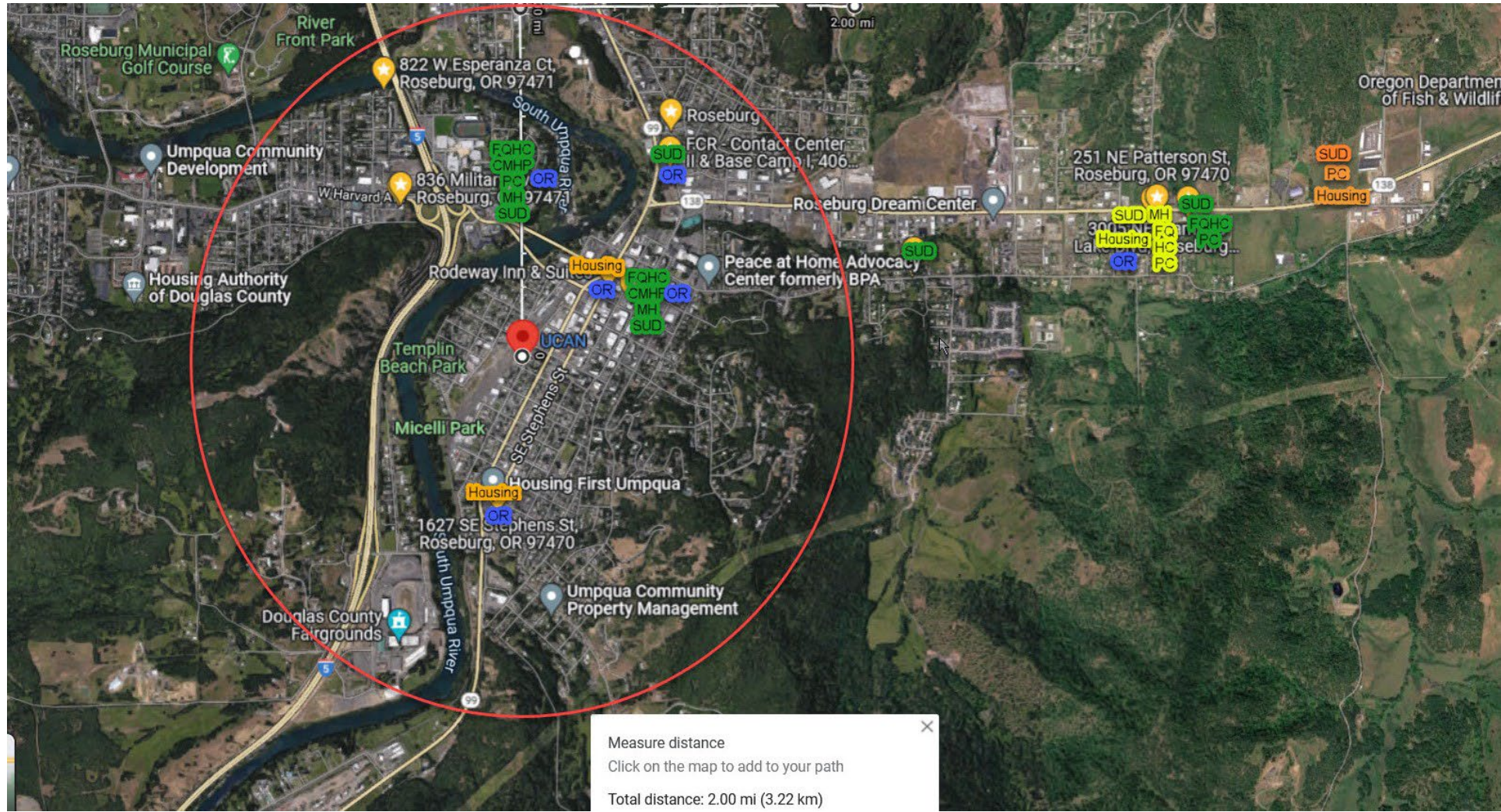
*Chief of Regional Business
Operations*

JerryO@adaptoregon.org

Adapt Integrated Health Care: A Brief History

- 1971: Founded as a substance use treatment program in Douglas County
- 1990s: Invited into two neighboring counties to take over substance use treatment
- 2000s: Established a Federally Qualified Health Center
- 2015: Took over the CMHP in Douglas County
- 2022: Stood up CMHP in Curry County at the invitation of local stakeholders and continues to provide substance use, outreach, and housing services in four counties

Adapt Services Locations



The Lodge



Questions?