

May 31, 2022

Westside Multimodal Improvements Study

Steering Committee Meeting

Jeanne Lawson, Stephanie Millar, Kate Hawkins



Agenda

- 1 Welcome and Introductions
- 2 Purpose and Goals
- 3 Schedule and Outcomes
- 4 Charter
- 5 Issues and Needs
- 6 Discussion & Public Comment



Study Purpose & Goals

Purpose

Collaboratively identify issues and needs in the study area and develop right-sized solutions that can be delivered at the right time.

Goals

- Develop fair and equitable outcomes.
- Improve access to regionally significant employment, educational, and commercial centers.
- Improve mobility throughout the Westside corridor for all travelers and freight movement.
- Improve connections between agricultural freight areas in northern Washington County and freight distribution areas in Multnomah County.
- Support future household and economic growth projected in the corridor.
- Support regional and statewide climate goals.
- Support adopted land use plans and goals for the region.

Study Area

- Project will identify transportation issues inside the boundary
- Solutions may extend past or occur outside the boundary

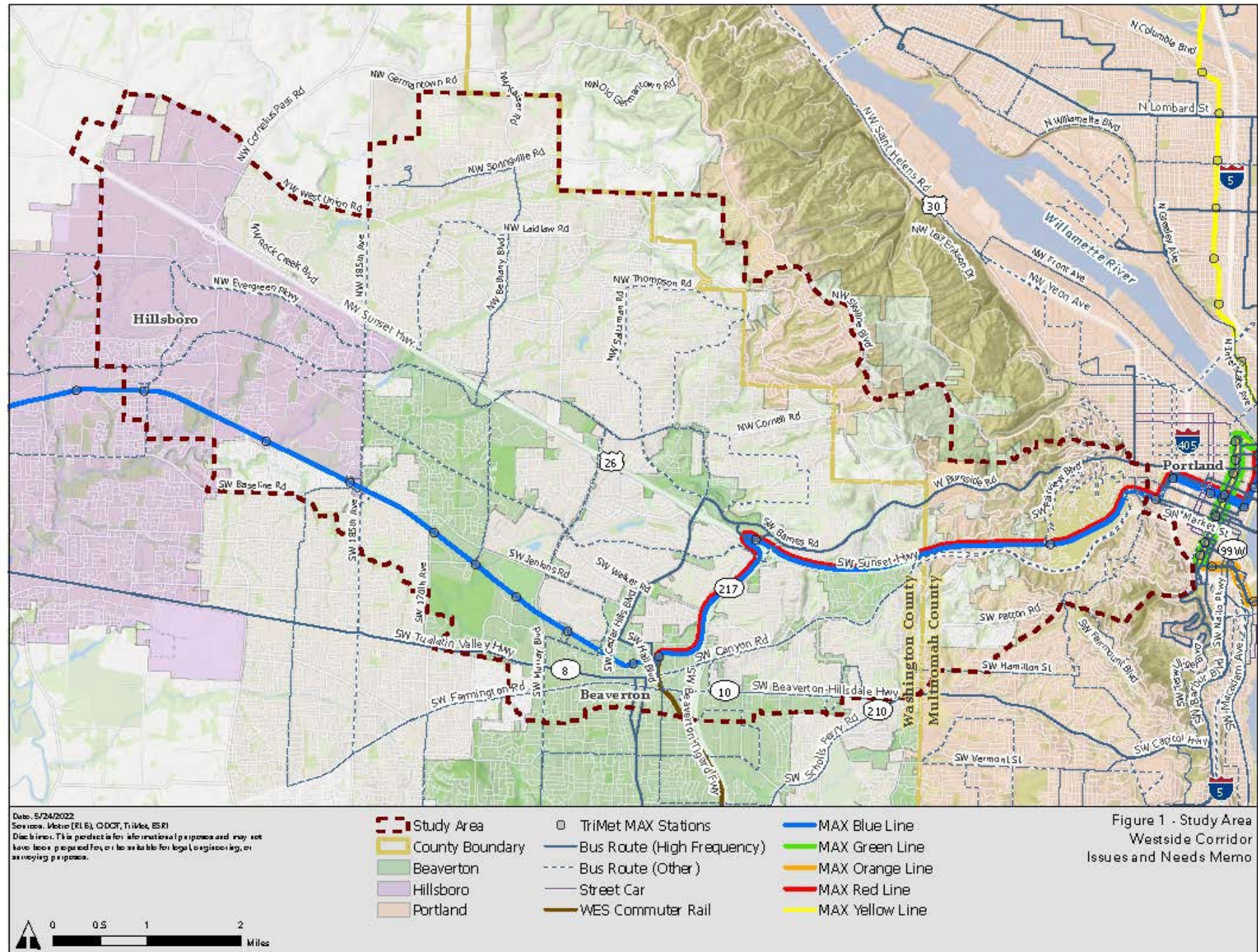
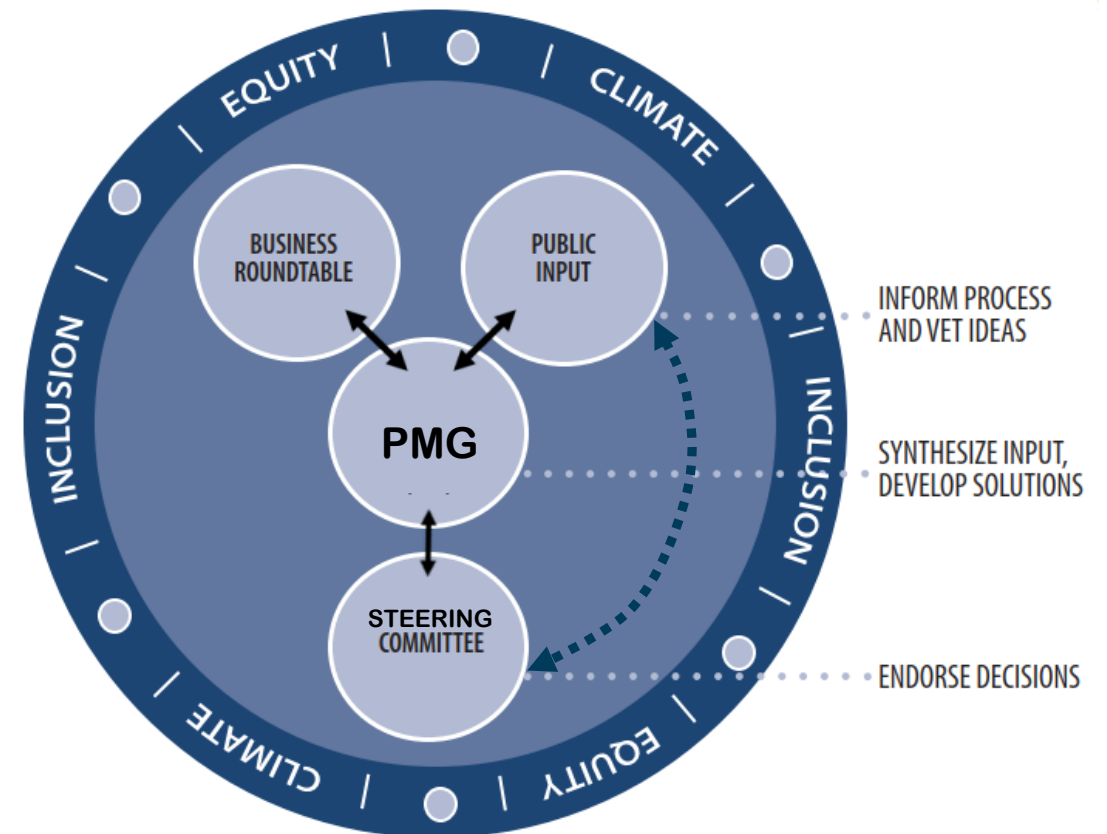


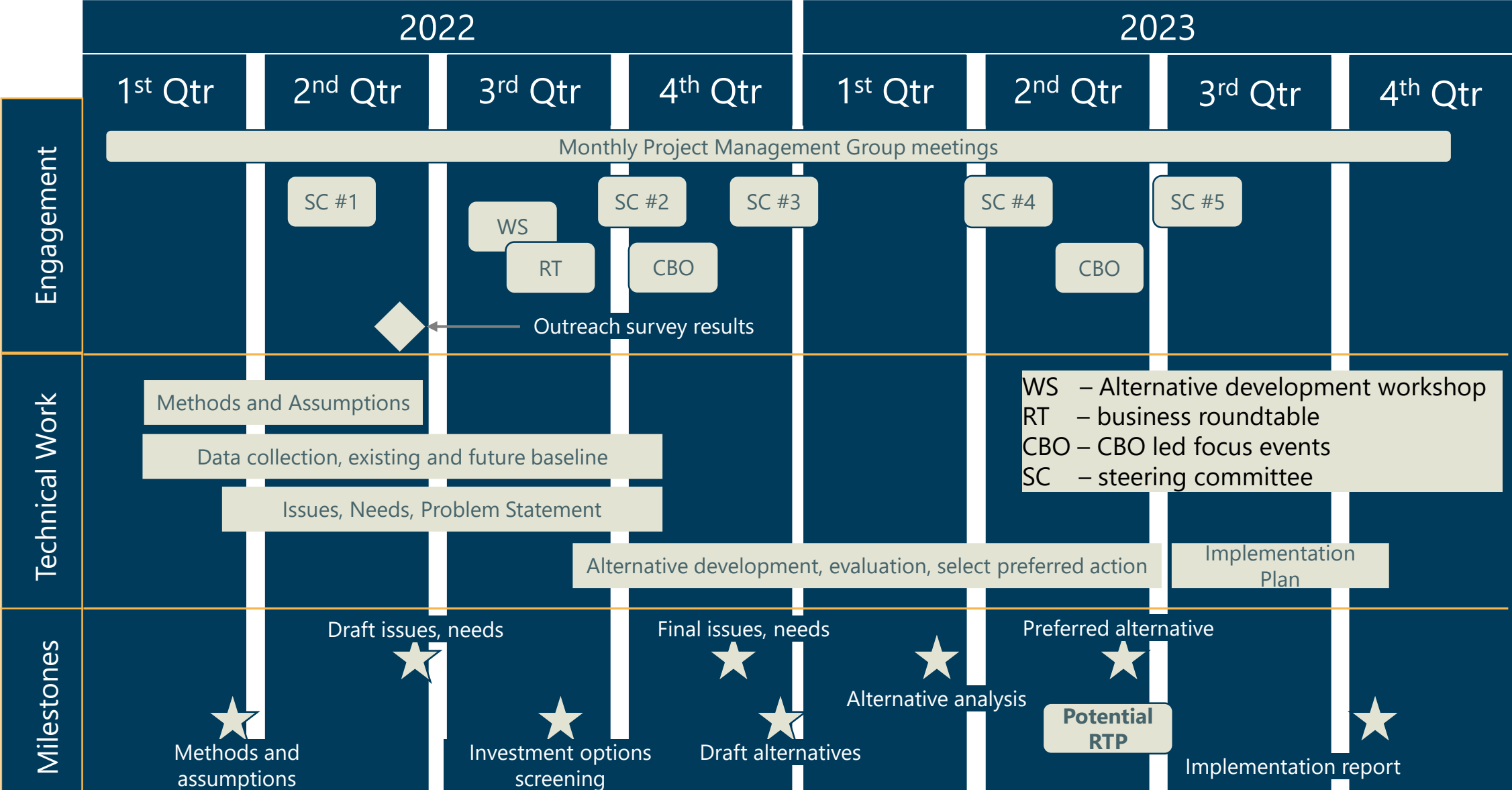
Figure 1 - Study Area Westside Corridor Issues and Needs Memo

Project Decision Making Structure

- Governance and decision making
 - Steering Committee
 - Project Management Group
 - ODOT/Metro
 - Public input via survey
 - Business input through business roundtable, public input, and contact through PMG and Steering Committee members
 - Community input through targeted engagement with historically marginalized communities and neighborhood groups, and contact through PMG and Steering Committee members



Milestone Schedule



Purpose of Study Charter

The study charter will:

- Provide clarity on what the study will include, plus the goals and potential outcomes
- Ensure that everyone has the same expectations for the study
- Outline how decisions are made, who will make them and how they will be made



Charter: Steering Committee Member charge

- Follow decision-making protocols as established by the Committee.
- Seek a consensus-based recommendation.
- Provide information to and from constituents and the study partners.
- Represent constituents' perspectives, concerns and priorities.
- Work with Project Management Group at study milestones on items such as:
 - Study goals.
 - Conditions and needs / problem statement.
 - A methodology for assessing the effectiveness of strategies in meeting the plan goals and objectives.
 - A range of alternative strategies for testing.
 - Prioritized strategies.
 - Identified commitments to support the strategies.
- Provide leadership, foster the creation of partnerships, and encourage local actions to implement the recommendations after approval of the Study



Study Charter: Steering Committee Member Roles

- Participate in scheduled meetings.
- Actively participate by contributing to meetings and reviewing materials before meetings.
- Abide by the agreed upon meeting ground rules.
- Represent the interests and perspectives of their constituencies.
- Ask questions and seek information to ensure understanding.
- Share differences of opinion on ideas.
- Help create a partnership atmosphere. Encourage and respect divergent views and opinions.



Issues and Needs

ISSUES



Transit travel times are not competitive

Multi-transfer rides, slower travel through City Center, slower land use development, inconsistent travel times, and last mile access reduce ridership



Inadequate "last mile" access

Existing non-grid design and gaps in active transportation network reduce access to transit



Congestion due to limited capacity

Continued growth without system redundancy results in longer periods of delay and increased diversion through neighborhoods. Congestion results in inconsistent travel times that impact regional economic competitiveness, quality of life, and ability to meet climate goals.



Traffic safety for all users and modes

Metro regional safety report shows increasing serious, fatal, and ped/bike crashes over the past five years throughout the region.



Impaired freight movement

Lack of redundant freight corridor and limited system connectivity increase congestion duration and impacts on freight mobility

NEEDS

Need to improve multimodal options

Need to reduce congestion and improve safety

Need to improve freight mobility

Discussion and Public Comment

Thank you!



Stephanie Millar - Stephanie.L.Millar@odot.oregon.gov

Kate Hawkins - Kate.Hawkins@oregonmetro.gov