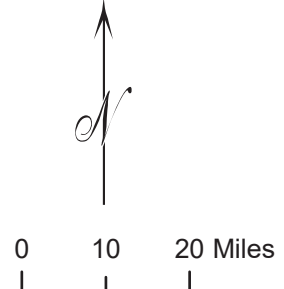


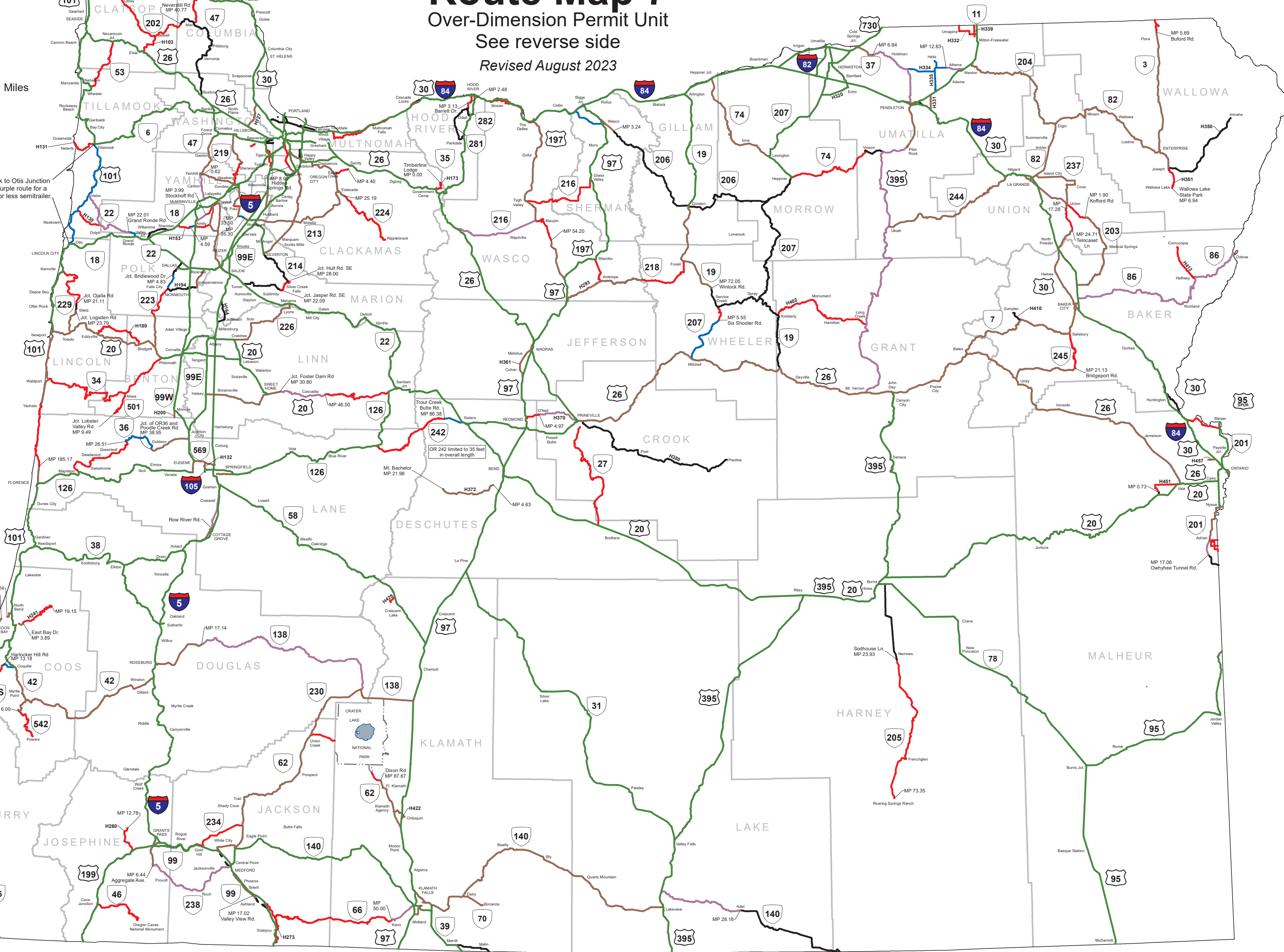
Oregon Department of Transportation
Route Map 7
 Over-Dimension Permit Unit
 See reverse side
 Revised August 2023

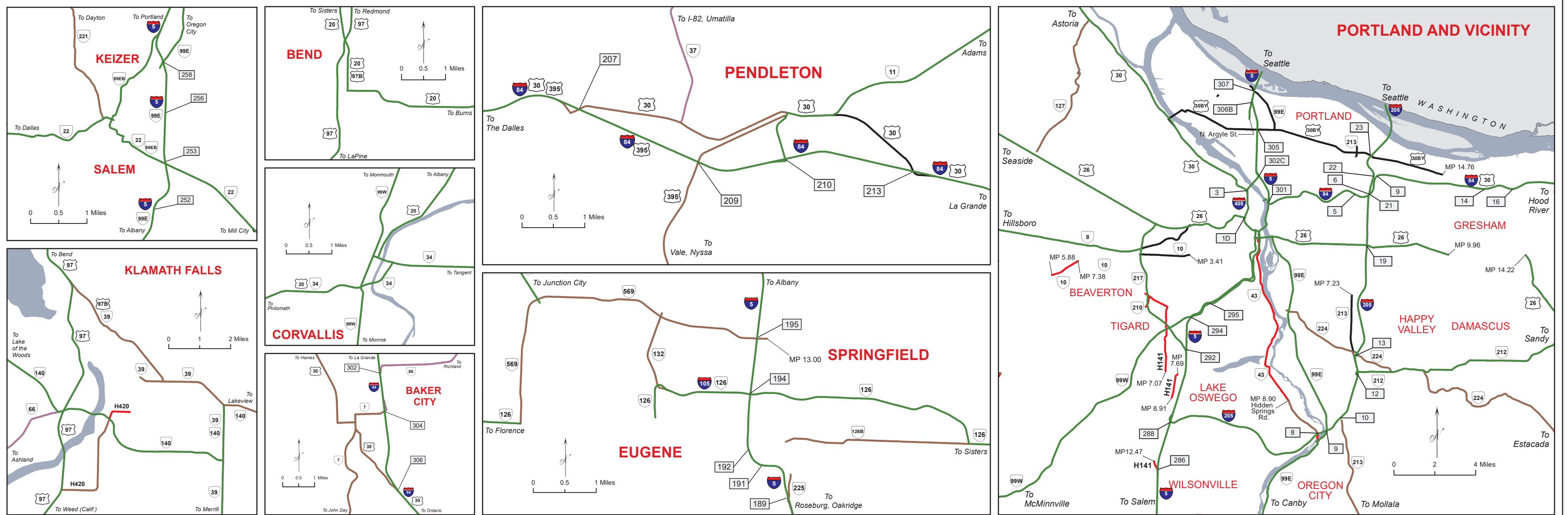
Reasonable access is allowed up to and including one mile on highways intersecting National Network Highways (Green Line routes below), except where specifically prohibited. (OAR 734-073-0066).



U.S. 101 from Tillamook to Otis Junction is to be treated like a purple route for a Truck Tractor with a 48' or less semitrailer.

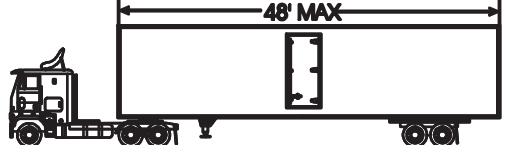
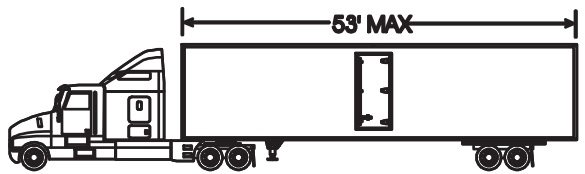
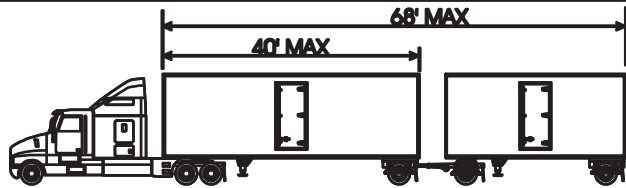
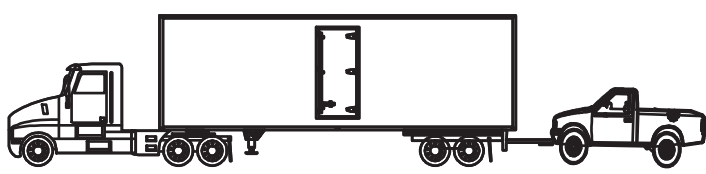
Route Map 7 - Displays Length Requirements for Truck-tractor/Semitrailers and Doubles. No permit required unless exceeding displayed limitations.





For additional information, contact or mail request to:
Commerce and Compliance Division
Over-Dimension Permit Unit
455 Airport Road SE, Building A
Salem, OR 97301
Telephone: (503) 373-0000

OVERALL LENGTH LIMITS

	Green	Brown	Purple	Black	Blue	Red
 <p>Truck-tractor with up to 48' Semitrailer.</p>	NO LIMIT	NO LIMIT	NO LIMIT	65'	60'	See Map 1 for legal length
 <p>Truck-tractor with up to 48'1" to 53' Semitrailer.</p>	NO LIMIT	NO LIMIT	65'	65'	60'	See Map 1 for legal length
 <p>No trailer or semitrailer shall exceed 40' in length. Distance from the front of the first trailer to the back of second shall not exceed 68' in length.</p>	NO LIMIT	NO LIMIT	NO LIMIT	NO LIMIT	NO LIMIT	See Map 1 for legal length
<p>Pickup Truck and Trailer (excludes RVs) See Map 1 - Refer to 8a under Type of Combination</p>	70' 53' Trailer	70' 53' Trailer	65' 53' Trailer	60' See Map 1 for legal length	60' See Map 1 for legal length	60' See Map 1 for legal length
 <p>Semitrailer not to exceed 40' in length.</p>	NO LIMIT	NO LIMIT	NO LIMIT	NO LIMIT	NO LIMIT	See Map 1 for legal length