

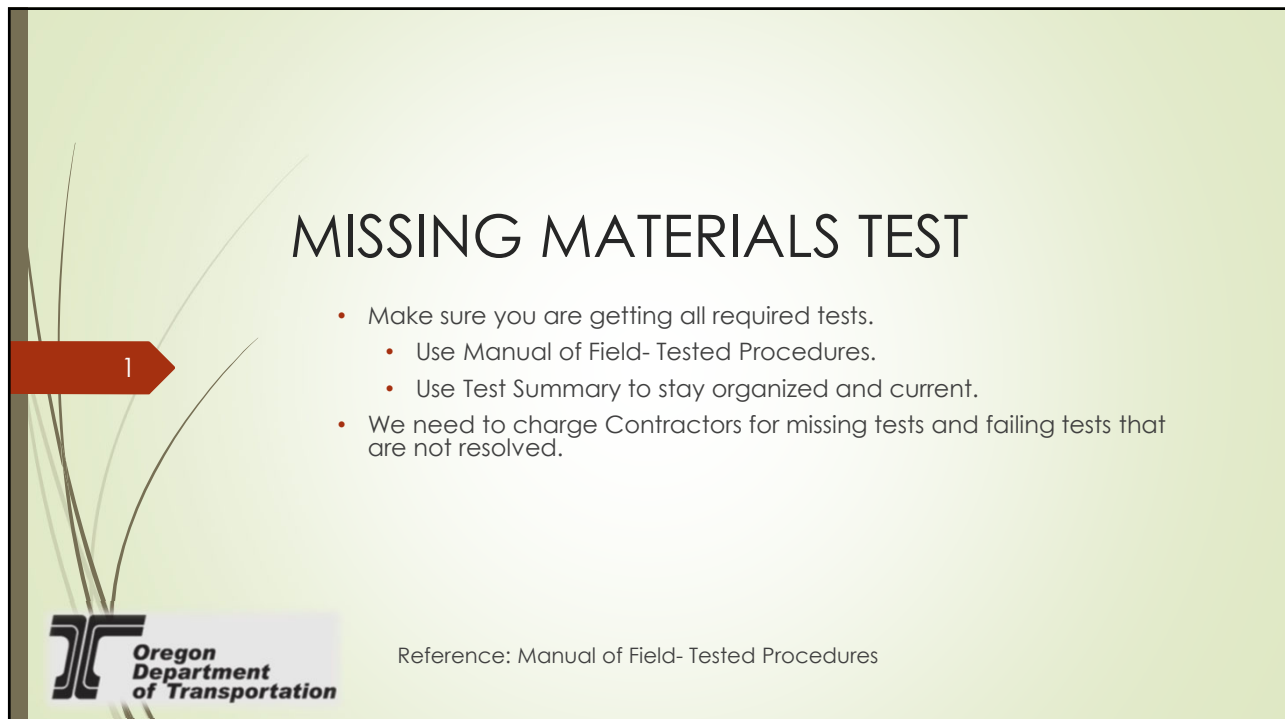


TOP DRR ISSUES




Oregon
Department
of Transportation

1



MISSING MATERIALS TEST

- Make sure you are getting all required tests.
 - Use Manual of Field- Tested Procedures.
 - Use Test Summary to stay organized and current.
- We need to charge Contractors for missing tests and failing tests that are not resolved.



Oregon
Department
of Transportation


Reference: Manual of Field- Tested Procedures

2

You can find this list under TOOLS on the CAU Webpage here:

<https://www.oregon.gov/odot/Construction/Pages/Contract-Administration-Services.aspx>

1a



CONSTRUCTION MATERIAL TESTING SERVICES
Costs based on testing services from each region.


Test Name	Designation	Cost Per Test or Hour
Mileage (per mile)	NA	\$0.75
Minimum Charge	NA	\$135
Technician - CCT/QCT	NA	\$135
Technician (Cat 1, CagT, CDT)	NA	\$135
Engineer-hourly	NA	\$135
AGGREGATE TESTS		
Sand Equivalent	AASHTO T 176	\$192
LAR	AASHTO T 96	\$226
Lightweights	AASHTO T 113	\$80
Unit Weight	AASHTO T 19	\$80
Fine Bulk Gravity	AASHTO T 84	\$134
Coarse Bulk Gravity	AASHTO T 85	\$104
Dry Gradation	AASHTO T 27	\$109
Washed Gradation	AASHTO T27/T11	\$163
% Fracture	AASHTO T 335	\$80
Wood Waste	ODOT TM 225	\$9
Cleanmess Value	ODOT TM 227	\$191
Elongated Pieces 5:1	ODOT TM 229	\$85
Moisture	AASHTO T 255	\$80
SOILS TESTS		
Organic Content	ASTM D2487/ AASHTO T267	\$193
Liquid Limit	AASHTO T 89	\$84
Plastic Limit	AASHTO T 90	\$105
Moisture-Density Method A/D (5.5 lb)	AASHTO T 99	\$495
Moisture-Density Method A/D (10 lb)	AASHTO T 180	\$676
Oregon Air Degradate	ODOT TM 208	\$137
Resistivity	AASHTO T 288	\$263
PH	AASHTO T 289	\$38
BITUMINOUS TESTS		
% AC by Incineration	AASHTO T 308	\$270
Calibration Factor for T-308	ODOT TM 323	\$810
Bulk Specific Gravity of Compacted Hot Mix Asphalt	AASHTO T 166	\$135
Bulk Gravity- DG Compacted mix	AASHTO T 166	\$203
Maximum Specific Density-ric	AASHTO T 209	\$188
Hamburg Wheel-Track Testing of Compacted Asphalt	AASHTO T 324	\$203
Hamburg Wheel-Track Testing of Compacted Asphalt	AASHTO T 324	\$1215
CONCRETE TESTS		
Cylinder Compressive Strength-per cylinder	AASHTO T 22	\$54
Groat Cube Compressive Str-per cube	AASHTO T 106	\$98

*Minimum charge is \$135
If total of tests missed does not equal \$135, you must still charge \$135

3

MISSING CHECK WEIGHT/SCALE CERTS

2



- Need a Scale cert and license.
- Manual weights require an ODOT weigh witness with fees.

Reference:

- Standard Specification 00190.20 (b) (d)
- Construction Manual Chapter 12D

4

CAS RESPONSIBILITIES

3

- Payments should not be entered into CPS before documents are received and reviewed.
- Prior to entering paynote into CPS:
 - Are all quality documents attached to paynote, or appropriately cross referenced?
 - Are calculations, measurements, and formulas included and accurate?
 - Has the Test Summary A been completed with paynote and documentation information?
 - Does the paid this estimate quantity match the entry in CPS?
- Transition documents according to the Document Directory (DEDD).
- Once payment is entered in CPS paynotes need to be transitioned to Ready for RAS Review.
- Estimates are reviewed by the RE and Contractor for accuracy before upload.



5

TACK- LIGHT AND HEAVY WEIGHT


4

- Missing Light and Heavy Weight Tickets for Tack.
- Manual weights require an ODOT weigh witness with fees.
- What do we do if we don't get light and heavy weights tickets or if the tickets contain manual weights?
 - Calculate the area based off neat line (grind out area) and lifts and convert to tons using minimum spread rate and specific gravity of the material.
 - Must provide calculations for neat lines used and calculations for mathematical equations for getting to tonnage used.
 - Due to escalation/de-escalation, the final tonnage will need to be broken down and paid by month.
- **This is only used for alternate means of acceptance with an RE Exception.**



Reference: Standard Specification 00705.90, 710.90, 711.90, 715.90, 730.90
735.90, 00190.10 (d)(2)
& Construction Manual 12D


6



FIELD TESTED MATERIAL REPORTS


5

- Wrong Forms used.
- Missing signatures.
- Failing Reports with No Resolution.



Reference: Construction Manual Chapter 12B


7



TEST SUMMARIES

6

- Not up to date.
- Not completed accurately.
- Missing quantities and test information.
- Make sure they are available to the RAS.



8

TEST SUMMARIES

Make available to the RAS upon request or share via OneDrive.

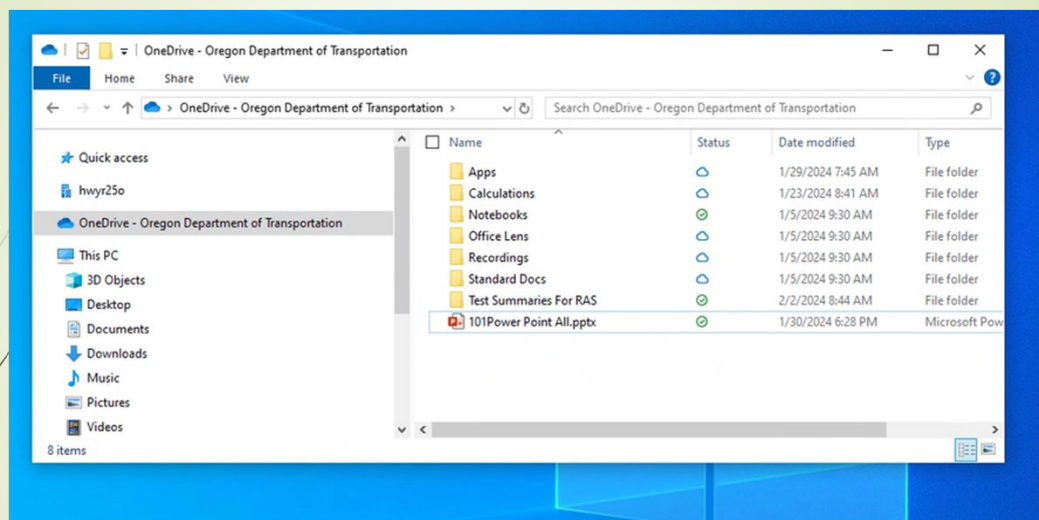
There are multiple ways to do this, two of them are:

- You can share an entire folder. (Create a folder on your OneDrive and save your test summary there.)
- You can share a single document. (Save your test summary on your OneDrive.)
 - Once it is saved on OneDrive:
 - Open File Explorer
 - Click on OneDrive

6a



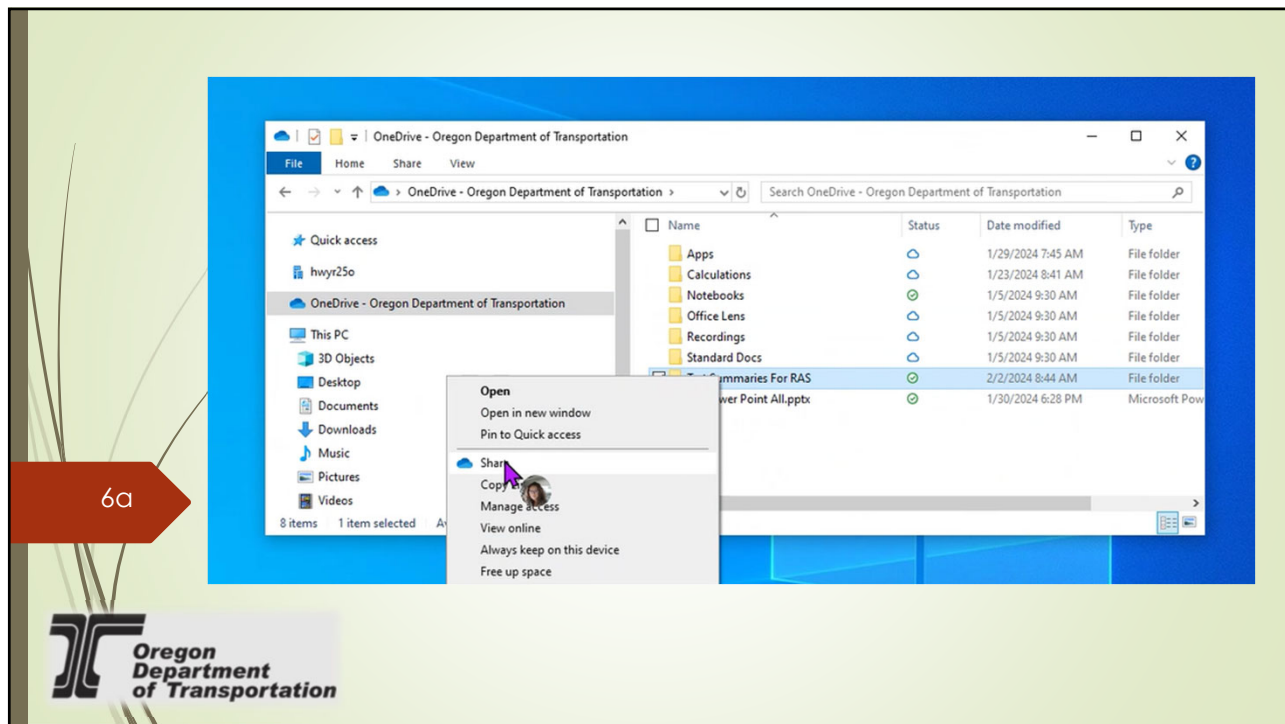
9



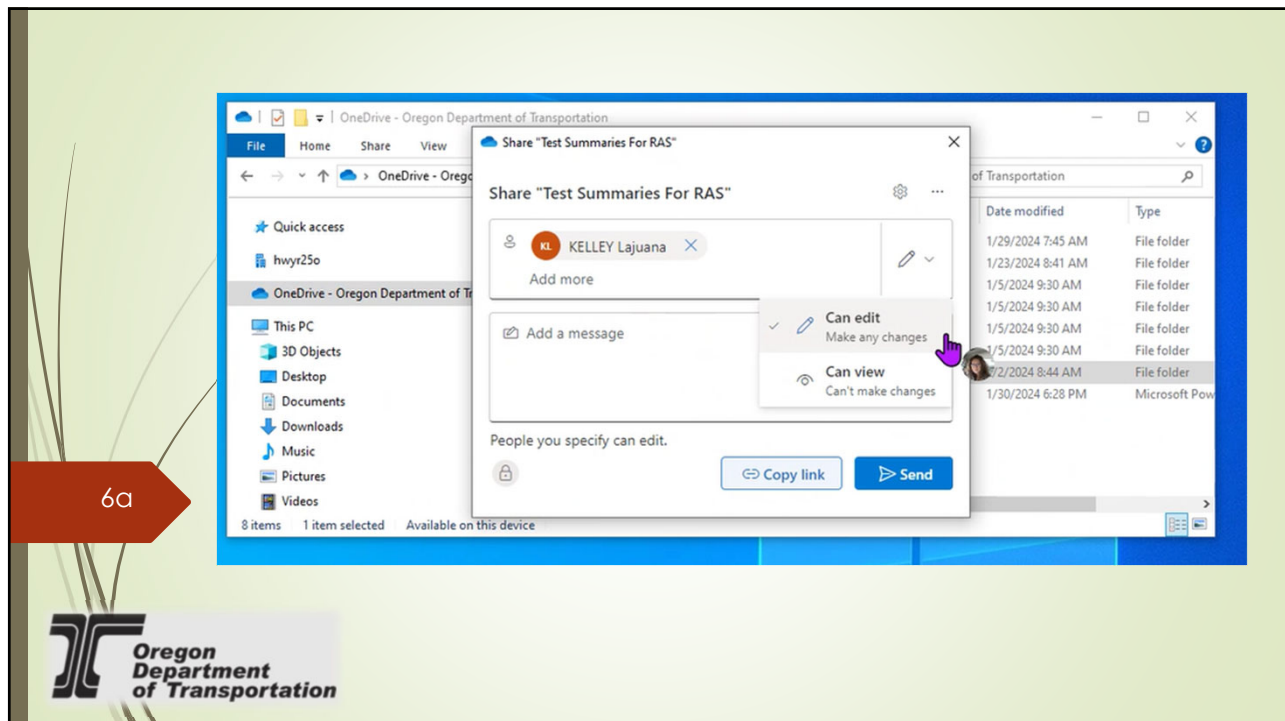
6a



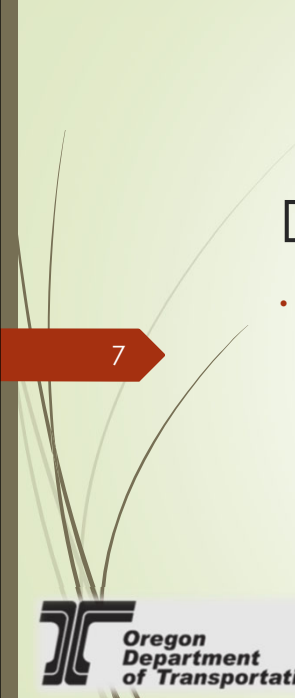
10



11




12



DOC EXPRESS ITEMS

- Follow the Doc Express Document Directory (DEDD) for process flow including:
 - Naming Conventions.
 - Required Transitions.
 - Supporting Documents.

7



Reference: Doc Express Document Directory

13



OVERRUN BID ITEMS

- Construction Manual Chapter 15.
- Specifications 223, 225, 340, 810 Cost Justification.


8



14

8a

Standard Specifications	2018	2021
Temporary Removable Tape	00225.93(g)	00225.90(c)
Temporary Non-Removable Tape	00225.93(h)	00225.90(d)
Temporary Non-Reflective Tape	00225.93(i)	00225.90(e)
Temporary Striping	00225.93(j)	00225.90(f)
Temporary Pavement Bars	00225.93(l)	00225.90(h)
Bar Removal	00225.93(o)	00225.90(k)
Flaggers	00225.98(a)	00223.90(a)
Traffic Control Supervisor	00225.98(b)	00223.90(b)
Pilot Cars	00225.99	00223.90(d)
Pedestrian Transport Vehicle	-----	00223.90(e)
Watering Limited to 125%	00340.91	00340.91
BPA Safety Watchers (boilerplate)	00225.98(a)	00223.90(h)
Railroad Flagger (boilerplate)	00225.98(b)	00223.90(g)
Tow Truck (boilerplate)	-----	00223.90(i)
Extra for Hand-Dug Guardrail Post Holes	00810.90(j)	00810.90(j)




15

9

MEASURMENTS

- Missing beginning and ending stations on paynotes.
- Missing calculations and equations.
- Stationing not adding up to lengths within reason.
 - Provide explanation when necessary.




16

FIR DOCUMENTATION

- FIRS need to be filled out completely.
- Verify all required quality documentation is recorded or appropriately cross referenced.
- Incorporated quantities are updated on the FIR.

10



Reference: Construction Manual Chapter 12B

17

RAS CONTACTS

<p>DJ Smith Donnie.J.Smith@odot.Oregon.gov (541) 823-4027 Region 5 (La Grande, Ontario)</p>	<p>Mary Saba Mary.G.Saba@odot.Oregon.gov (503) 621-2047 Region 1 (Barlow-Miller, Mult Co., City Gresham/Beaverton, Clackamas Co.)</p>	<p>Tony Nguyen Tony.V.Nguyen@odot.Oregon.gov (503) 731-3265 Regions 1 & 4 (Barlow-Aguon, The Dalles, City Portland, PBOT)</p>
<p>Katie Miller Katie.Miller@odot.Oregon.gov (541) 430-2386 Region 2 (Salem, Astoria, City Salem, Marion Co.)</p>	<p>Lajuana Kelley Lajuana.Kelley@odot.Oregon.gov (503) 428-4510 Region 3 (Roseburg, Coquille)</p>	<p>Gene Thomey Farrell.Thomey@odot.Oregon.gov (503) 428-3218 Regions 3 & 4 (Klamath Falls, White City)</p>
<p>Merry Sylvia Merry.L.Sylvia@odot.Oregon.gov (503) 781-9317 Region 1 (Beaverton, Troutdale)</p>	<p>Art Nunez Arthur.Nunez@odot.Oregon.gov (503) 983-6471 Region 2 Consultant Projects and Region 4 (Bend)</p>	<p>Justin Cary Justin.Cary@odot.Oregon.gov (541) 246-0379 Regions 2 & 3 (Corvallis, Springfield, Lane Co., City Eugene/Corvallis)</p>
	<p>Rob Peters Robert.W.Peters@odot.Oregon.gov (541) 890-6199 Reg 3 & 4 (Ret. Temp)</p>	

18