

Prineville-Sisters Chipping Program

CONTACT INFORMATION

██████████
Stewardship Forester
Prineville-Sisters Unit

██████████
Stewardship Forester
Prineville-Sisters Unit

TREATMENT LOCATION

Project area represented by three communities within the Deschutes, Jefferson, and Crook Counties. All with CWPPs. Communities known as DRRH 1-5 & 9 (La Pine) that is a WUI area within ODF District boundaries, Juniper Canyon (Prineville), and Crooked River Ranch are WUI areas that are not within ODF District boundaries. Vegetation includes ponderosa/lodgepole pine, bitterbrush, juniper, sagebrush, and bunchgrass. This area has heavy continuous fuel loading due to lack of active management, a history of drought conditions, and is prone to frequent fires. These challenges underscore the need for funds to accomplish work, including but not limited to: prevention, education & outreach; assessing/treating fuels around and within the WUI; and joining fuel reduction projects across the landscape. The project areas are shown in the HUC_6 map as High or Very High. Hazardous fuels. A growing WUI, and needed guidance make the project area a top priority for grant funding.

DESCRIPTION OF TREATMENT ACTIVITIES

This fuels reduction and chipping project with the Oregon Department of Forestry will fund landowner cost-share incentives for project work on a minimum of 100 acres and a roadside chipping program for 200 homesites equivalent to 200 acres. Fuels reduction, forest resiliency, outreach, prevention education, and chipping program are the targeted activities of the grant along with monitoring of treatments and accomplishment reporting. Fuels reduction and forest resiliency would include primarily thinning overstocked and diseased stands of pine and juniper, pruning remaining trees, mastication of brush and small trees, and chipping materials or burning piles on-site to remove the excess woody debris. Much of the work will focus on reducing fuels near structures, along ingress and egress routes, along property lines, and across entire ownerships. Projects will be completed by landowners and contractors on fuels reductions with chipping services provided to the communities being completed by ODF fuels crew. Examples of groups receiving targeted prevention education are landowners, forestry contractors, recreationists, hunters, community Firewise boards, homeowner associations, and visitors to county fairs, home and garden shows, and other public forums. (5,000 citizens). Priorities 1-4 will be addressed by reducing hazardous amounts of fuel loading in WUI areas which will protect structures that are on and or adjacent to two project work areas. Treatments will be focused on stands that are primarily overstocked and diseased.

DESCRIPTION OF THE ANTICIPATED BENEFIT

This project will reduce hazardous fire characteristics on both individual and landscape scales in the Prineville-Sisters chipping program area bordering Crooked River Ranch, La Pine, Prineville, and Sunriver. Utilizing momentum from current and past work on proactive WUI management, the impacts of this project will be magnified by joining previous and current Federal, State, County, and City projects. Examples of projects include West Bend (21,817 ac.); Ursus (3,969 ac.); East Tumalo (3,729 ac.); Rocket (9,938 ac.); South Bend Hazard Fuels Reduction Area (3,021 ac.); Kew (6,500 ac.); Cabin Butte (22,872 ac.); and Tumalo (1,956 ac.). Recent NRCS fuels projects total 580 acres; Deschutes County projects within communities adjoining Bend total 1,116 acres, and Bend Parks and Rec projects total about 450 additional acres. Many of these projects are collaborative efforts involving broadcast burning across ownerships. Recent ODF projects on local private lands total 1,500 acres. Continued collaboration on projects will be reflected in the increased ability to slow and resist fire spread, reduced fire risk,

and increase the safety of residents. Fuels reduction funding will be targeted towards vulnerable populations including individuals that are elderly, individuals with chronic health conditions, individuals that are economically disadvantaged residents as well as residents in Crooked River Ranch who are outside ODF-protected lands and fall within our project areas. The chipping program will assist the overall communities within the project area. Residents who participate will be encouraged to utilize excess woody material which is not chipped to be used as other non-traditional forest products.

TIMELINE

First 6 months

- Coordination with partner entities
- Outreach to landowners
- Update GIS web map to display eligible grant area
- Identify interested landowners
- Implement projects
- Implement first round of two-month chipping program

Year 1

- Continue work on-the-ground
- Continue project work with ongoing and new project sites
- Implement second round of two-month chipping program

Year 1.5

- Implement and complete the third round of two-month roadside chipping program
- Complete and review projects
- Document successes and analyze grant effectiveness

BUDGET

All funds will be used to accomplish fuel reduction work, chipping program, and prevention education activities. Oversight will be provided by ODF NRS2.

PERSONNEL/FRINGE BENEFIT: ODF employees to provide analysis of fire prevention needs, landowner education, treatment operations advice, project coordination and chipping program workers

- Forest Officer 6-months (\$27,264 and \$13,632)
- 2-WFSS 6-Months (\$50,118 and \$25,059)
- 2-Entry WFSS 6-months (\$35,466 and \$17,733)

TRAVEL: ODF employees use ODF vehicles for transportation to and from project sites and diesel fuel for the chipper. (\$17,360).

EQUIPMENT: ODF Prineville-Sisters to buy and use a chainsaw and two leaf blowers during the chipping program (\$1,532)

SUPPLY: Education/outreach supplies and prevention supplies/materials for landowner communications. Other supplies for the Chipping program. (\$3,969)

CONTRACTUAL: Includes \$50,000 for landowner cost-share (work done by landowners).

Leverage source from two federal grants provided to the ODF-COD. Grants include Greater La Pine 2 GF2018-01 and Southern Prineville GF3121-07.

Budget Worksheet

Instructions: Fill out blue-bordered boxes

Grant Agreement #/Project Name:

#

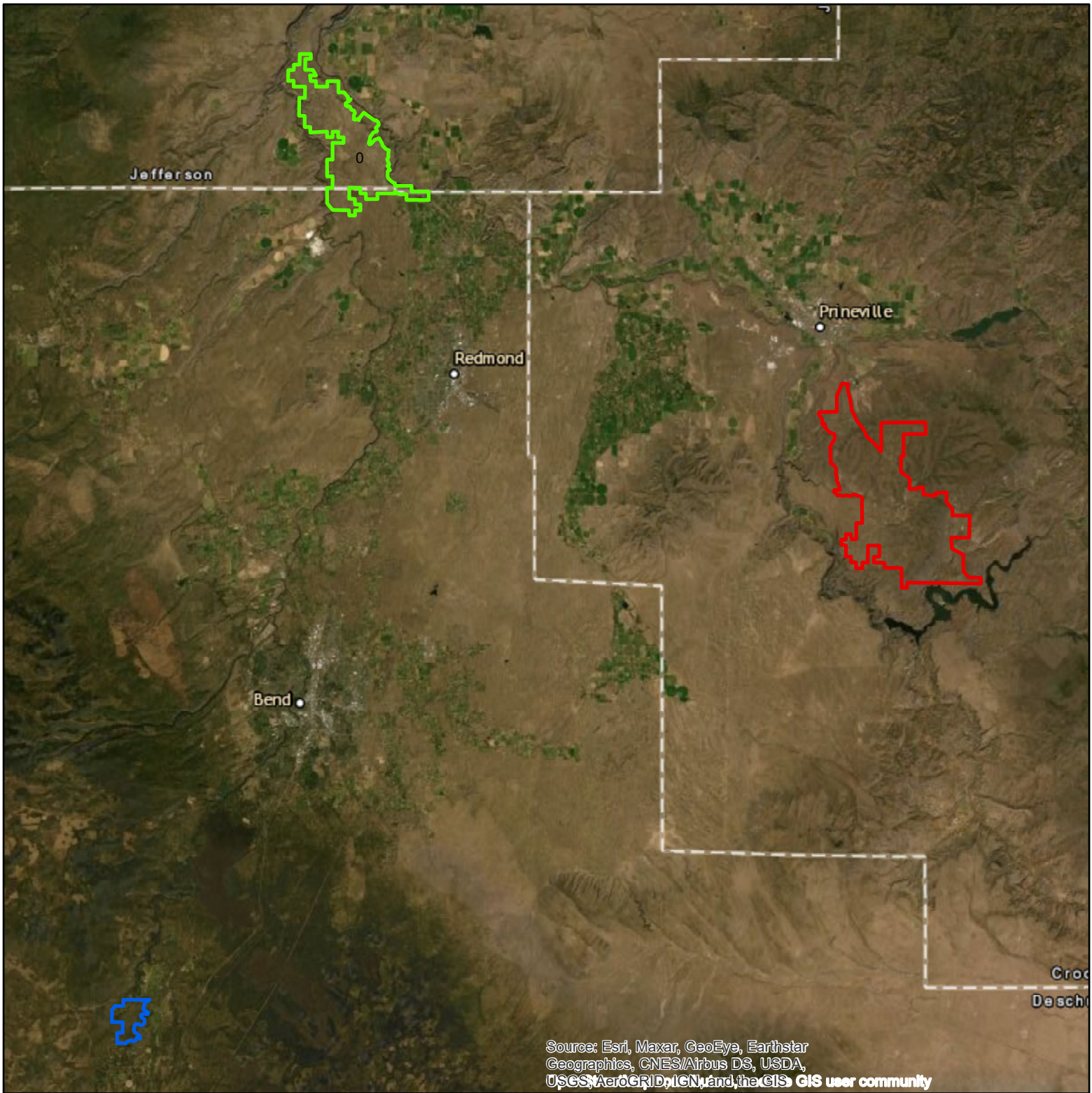
/ Prineville-Sisters Chipping Program

Deliverables	
Below are examples, replace with your projects quantified treatment activities (acres)	
1	100 Acres of non-commercial Thinning, release, and slash treatment
2	Chipping project on 200 Homesites at 1 Acre per lot
#	
#	
#	
#	
#	
#	
#	
#	
#	
#	
Treatment Footprint	300 Acres

Cost Category	Grant Request	Leverage		Total Project Cost
		Match (if any)	Leverage (if any)	
1. Personnel	\$ 112,372.00			\$ 113,451.00
2. Fringe Benefits	\$ 56,186.00			\$ 56,726.00
3. Travel	\$ 17,360.00			\$ 17,360.00
4. Equipment	\$ 1,532.00			\$ 1,532.00
5. Supplies	\$ 3,969.00			\$ 3,969.00
6. Contractual	\$ 50,000.00	\$ 25,000.00	\$ 179,244.00	\$ 254,244.00
7. ODF (if applicable)				\$ 0.00
Total	\$ 243,038.00	\$ 25,000.00	\$ 179,244.00	\$ 447,282.00

Narrative justification by line item: totals should match claim above.

For each line item	Detail by position or item cost, rate, number of units, and subtotals. Tie costs to Deliverables. Example: Personnel and Fringe (\$1,480 and \$740=\$2,220) for 1 Ecologist working 40 hours @ \$37/hour to treatment plan 100 acres of fuel treatments
Personnel & Fringe	Personnel and Fringe for Forest Officer 6-months (\$27,264 and \$13,632 = \$40,896) Personnel and Fringe for 2 WFSS 6-Months (\$49,644 and \$24,822 = \$74,466) Personnel and Fringe for 2 Entry WFSS 6-Months (\$35,446 and \$17,733 = \$53,179) Working 10 hr/day each @ \$26.47,\$24.10x2 and \$17.22x2 to chipping program and Grant sign up's and sign off's
Travel	Tow Pickup: 2,060 miles/mon. x .43/mile = \$885.8 X 6 mon. = \$5,314.8 Crew: 2,060 miles/mon. x .57/mile = \$1174.2 x 6 mon = \$7,045.2 Chipper Fuel Cost: \$5,000
Equipment	1-Chainsaw = \$671.99 2-Stihl leaf blowers = \$860
Supplies	Chainsaw chain = \$501.84 Bar Oil (40) x \$5.99 = \$239.6 Fuel mix (70) x \$3.24 = \$226.8 Parts/Maint/education and outreach = \$3,000
Contractual Payments	Private Landowner Cost share = \$50,000 (\$500 x 100 ac)
ODF (if Applicable)	
Leverage Sources	Leverage will be provided from Federal grants recieved by ODF-Central Oregon District for adjacent work to be completed under the Greater La Pine 2 grant (\$89,244) and Southern Prineville Grant (\$90,000)






0 2.75 5.5 11 16.5 22 Miles 1:535,383

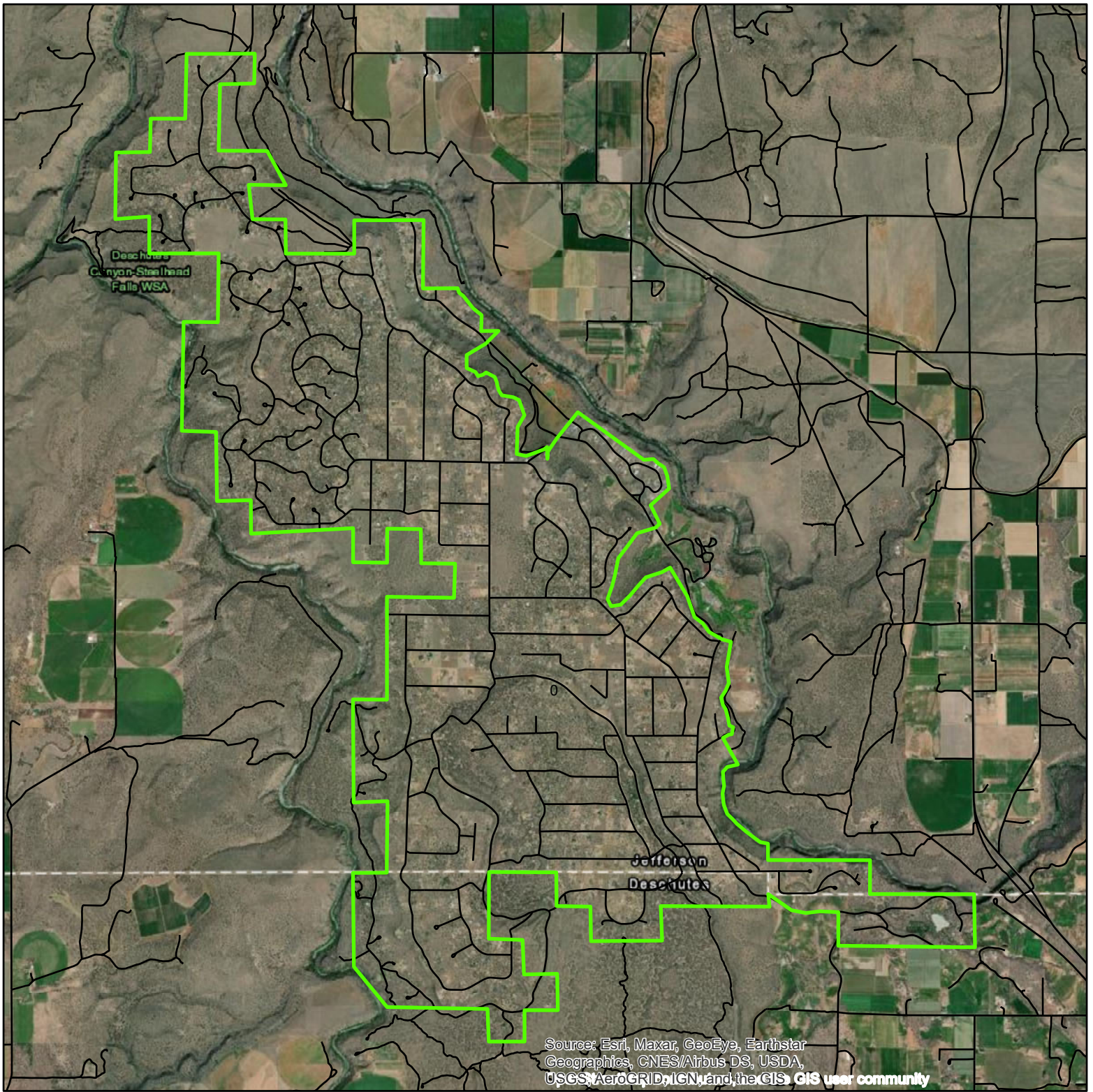
Coordinate System: WGS 1984 Web Mercator Auxiliary Sphere
 Projection: Mercator Auxiliary Sphere
 Datum: WGS 1984

Prineville-Sisters Chipping Area Overview

Sponsor: Oregon Department of Forestry

-  Crooked River Ranch
-  Juniper Canyon
-  DRRH 1-5, 9


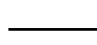




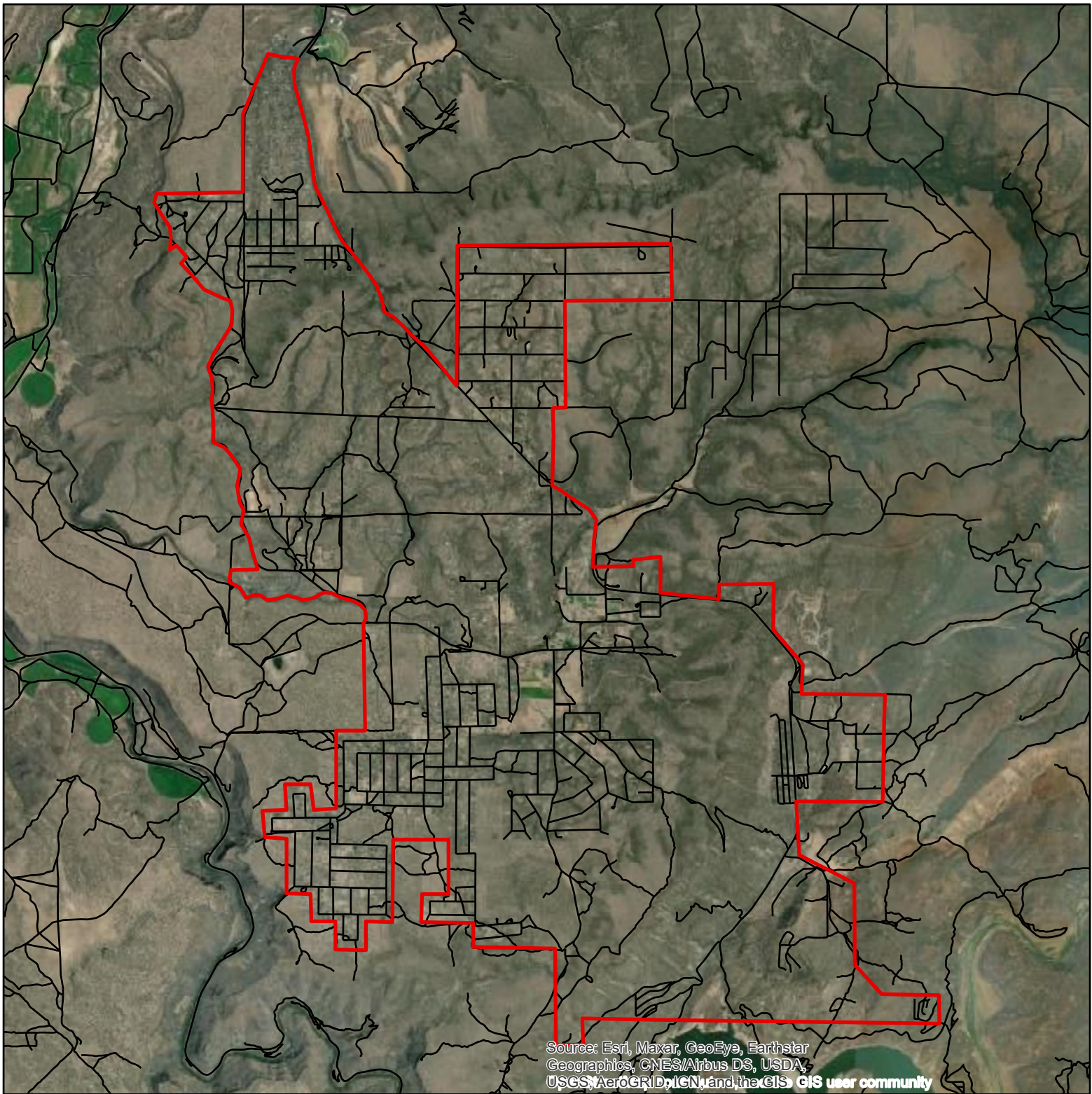
0 0.5 1 2 3 4 Miles 1:87,500

Coordinate System: WGS 1984 Web Mercator Auxiliary Sphere
 Projection: Mercator Auxiliary Sphere
 Datum: WGS 1984

**Prineville-Sisters Chipping Project
 Crooked River Ranch Area
 Sponsor: Oregon Department of Forestry**

-  Crooked River Ranch Project Boundary
-  ODF Statewide Road







0 0.5 1 2 3 4 Miles

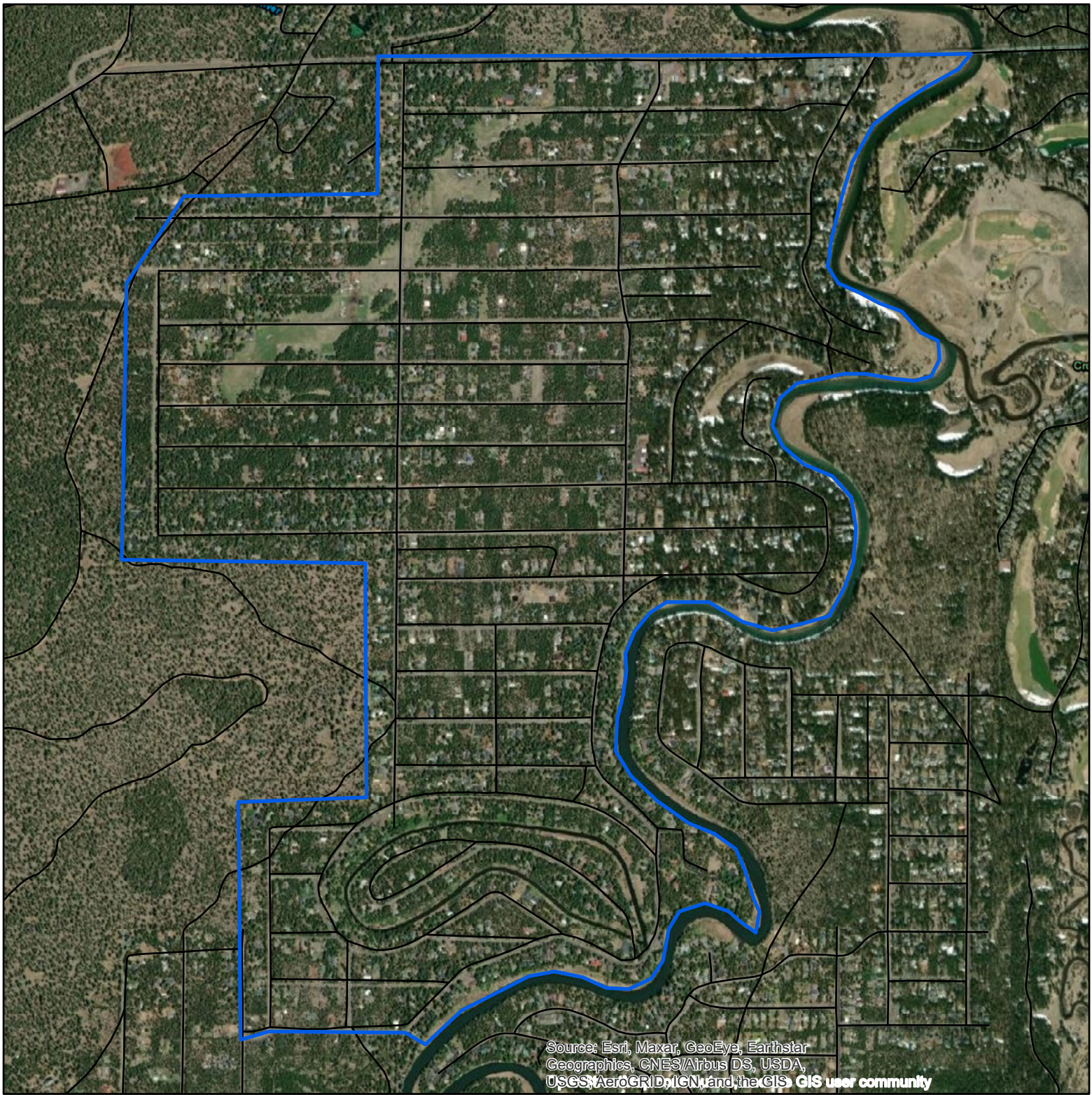
1:110,865

Coordinate System: WGS 1984 Web Mercator Auxiliary Sphere
 Projection: Mercator Auxiliary Sphere
 Datum: WGS 1984

**Prineville-Sisters Chipping Project
 South Prineville Area
 Sponsor: Oregon Department of Forestry**

-  Juniper Canyon Project Boundary
-  ODF Statewide Road




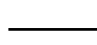


Source: Esri, Maxar, GeoEye, Earthstar Geographics, CNES/Airbus DS, USDA, USGS, AeroGRID, IGN, and the GIS user community

0 0.125 0.25 0.5 0.75 1 Miles 1:23,834

Coordinate System: WGS 1984 Web Mercator Auxiliary Sphere
 Projection: Mercator Auxiliary Sphere
 Datum: WGS 1984

**Prineville-Sisters Chipping Project
 Sunriver / La Pine Area
 Sponsor: Oregon Department of Forestry**

-  DRRH 1-5, 9 Project Boundary
-  ODF Statewide Road



Number of Panel Reviewer #1		Project Name	Prineville-Sisters Chipping Program	
Priority	Proposal Scoring Rubric	Possible Points	Reviewer Score	
1	Clearly describes treatment activities and how future condition reduces risk of high severity wildfire	20	20	
Reviewer Comments	300 acres: Fuels reduction, forest resiliency, outreach, prevention education, and chipping program are the targeted activities of the grant along with monitoring of treatments. Fuels reduction and forest resiliency activities: thinning overstocked and diseased stands of pine and juniper, pruning remaining trees, mastication of brush and small trees, and chipping materials or burning piles onsite. Continued collaboration on projects will be reflected in the increased ability to slow and resist fire spread, reduced fire risk, and increase the safety of residents.			
2	Project protects infrastructure, creates shaded fuel breaks along roadways, or is in a Wildfire Risk Class of High or Extreme (HUC 6 watershed)	15	15	
Reviewer Comments	Much of the work will focus on reducing fuels near structures, along ingress and egress routes, along property lines, and across entire ownerships. The project areas are shown in the HUC_6 map as High or Very High hazardous fuels.			
3	Project treats or protects multiple properties	15	15	
Reviewer Comments	200 homesites			
4	Proposed treatment(s) address insects and disease, drought mortality, invasive species, storm damage or enhances wildlife habitat	15	11	
Reviewer Comments	This area has a history of drought conditions. Treatments will be focused on stands that are primarily overstocked and diseased.			
5	Clearly demonstrates collaborative approach including treatment proximity to previous or planned hazardous fuel treatments	10	10	
Reviewer Comments	The impacts of this project will be magnified by joining previous and current Federal, State, County, and City projects. Examples of projects include West Bend; Ursus; East Tumalo ; Rocket; South Bend Hazard Fuels Reduction Area ; Kew; Cabin Butte; and Tumalo. Recent NRCS fuels projects total 580 acres; Deschutes County projects within communities adjoining Bend total 1,116 acres, and Bend Parks and Rec projects total about 450 additional acres. Many of these projects are collaborative efforts involving broadcast burning across ownerships.			
6	Proposed treatment(s) benefit vulnerable populations or under protected properties	10	10	
Reviewer Comments	Fuels reduction funding will be targeted towards vulnerable populations including individuals that are elderly, individuals with chronic health conditions, individuals that are economically disadvantaged residents as well as residents in Crooked River Ranch who are outside ODF-protected lands and fall within our project areas.			
7	Treatment area references a forest management plan or is located within a priority planning area listed in Funding Priority 6	10	10	
Reviewer Comments	Project area within the Deschutes, Jefferson, and Crook Counties. All with CWPPs.			
8	Project utilizes non-traditional forest products	5	5	
Reviewer Comments	The chipping program will assist the overall communities within the project area. Residents who participate will be encouraged to utilize excess woody material which is not chipped to be used as other non-traditional forest products.			
Final Score		Out of 100	96	

Number of Panel Reviewer #2		Project Name	Prineville-Sisters Chipping Program	
Priority	Proposal Scoring Rubric	Possible Points	Reviewer Score	
1	Clearly describes treatment activities and how future condition reduces risk of high severity wildfire	20	20	
Reviewer Comments	yes			
2	Project protects infrastructure, creates shaded fuel breaks along roadways, or is in a Wildfire Risk Class of High or Extreme (HUC 6 watershed)	15	15	
Reviewer Comments	high or very high			
3	Project treats or protects multiple properties	15	15	
Reviewer Comments	yes			
4	Proposed treatment(s) address insects and disease, drought mortality, invasive species, storm damage or enhances wildlife habitat	15	5	
Reviewer Comments	drought—this aspect least developed			
5	Clearly demonstrates collaborative approach including treatment proximity to previous or planned hazardous fuel treatments	10	10	
Reviewer Comments	yes			
6	Proposed treatment(s) benefit vulnerable populations or under protected properties	10	10	
Reviewer Comments	yes			
7	Treatment area references a forest management plan or is located within a priority planning area listed in Funding Priority 6	10	10	
Reviewer Comments	yes			
8	Project utilizes non-traditional forest products	5	0	
Reviewer Comments	aspirational rather than planned			

Final Score

Out of
100

85

Number of Panel Reviewer #3		Project Name	Prineville-Sisters Chipping	
Priority	Proposal Scoring Rubric	Possible Points	Reviewer Score	
1	Clearly describes treatment activities and how future condition reduces risk of high severity wildfire	20	15	
Reviewer Comments	100 acres of non-commercial treatments, chipping on 200 acres, but unclear how activities are prioritized in relatively large footprint.			
2	Project protects infrastructure, creates shaded fuel breaks along roadways, or is in a Wildfire Risk Class of High or Extreme (HUC 6 watershed)	15	15	
Reviewer Comments	High/Very High Wildfire Risk Class, infrastructure protection			
3	Project treats or protects multiple properties	15	15	
Reviewer Comments	yes			
4	Proposed treatment(s) address insects and disease, drought mortality, invasive species, storm damage or enhances wildlife habitat	15	10	
Reviewer Comments	Notes that treatments will focus on stands, "primarily overstocked and diseased". Not a lot of additional details though on this, drought, habitat, etc.			
5	Clearly demonstrates collaborative approach including treatment proximity to previous or planned hazardous fuel treatments	10	10	
Reviewer Comments	Yes, appears to be good continuity here with other projects			
6	Proposed treatment(s) benefit vulnerable populations or under protected properties	10	8	
Reviewer Comments	Notes that funding will be targeted toward vulnerable populations, but it is a little unclear how that will occur			
7	Treatment area references a forest management plan or is located within a priority planning area listed in Funding Priority 6	10	0	
Reviewer Comments	Could not find reference to forest management plan or other prioritization documents			
8	Project utilizes non-traditional forest products	5	3	
Reviewer Comments	Notes that residents who participate will be encouraged to utilize excess woody material not chipped as other non-traditional forest products. However, a plan for how this would occur in real-time is not provided.			
Final Score		Out of 100	76	

Number of Panel Reviewer # 4		Project Name	Prineville-Sisters Chipping Program	
Priority	Proposal Scoring Rubric	Possible Points	Reviewer Score	
1	Clearly describes treatment activities and how future condition reduces risk of high severity wildfire	20	10	
Reviewer Comments	The program covers multiple counties and landowners with the intent of educating landowners of protection programs under ODF. The program intends to implement vegetation control measures within the areas. Specific details are not provided			
2	Project protects infrastructure, creates shaded fuel breaks along roadways, or is in a Wildfire Risk Class of High or Extreme (HUC 6 watershed)	15	7	
Reviewer Comments	Over the larger area these measures may well be met however, the application does not identify specific projects			
3	Project treats or protects multiple properties	15	12	
Reviewer Comments	The program would definitely treat multiple properties			
4	Proposed treatment(s) address insects and disease, drought mortality, invasive species, storm damage or enhances wildlife habitat	15	7	
Reviewer Comments	The treatments address these issues in a broad spectrum through stand thinning's, chipping and burning piles. Not as a specific action.			
5	Clearly demonstrates collaborative approach including treatment proximity to previous or planned hazardous fuel treatments	10	6	
Reviewer Comments	With the broad spread though counties and federal lands the project would definitely be collaborative			
6	Proposed treatment(s) benefit vulnerable populations or under protected properties	10	6	
Reviewer Comments	The area includes and elderly population.			
7	Treatment area references a forest management plan or is located within a priority planning area listed in Funding Priority 6	10	4	
Reviewer Comments	No specific forest planes are described: however, the area is described as an HUC 6			
8	Project utilizes non-traditional forest products	5	2	
Reviewer Comments	No reference to forest products or their usage: however, there will be forest products generated in the thinning areas.			
Final Score		Out of 100	54	

Number of Panel Reviewer # 5		Project Name	Prineville-Sisters Chipping Program	
Priority	Proposal Scoring Rubric	Possible Points	Reviewer Score	
1	Clearly describes treatment activities and how future condition reduces risk of high severity wildfire	20	15	
Reviewer Comments	Describes existing condition, clearly lists activities, lacks detail on prescription of resulting condition will reduce risk of high severity wildfire.			
2	Project protects infrastructure, creates shaded fuel breaks along roadways, or is in a Wildfire Risk Class of High or Extreme (HUC 6 watershed)	15	15	
Reviewer Comments	200 homesites, high or very high risk, includes a roadside chipping program			
3	Project treats or protects multiple properties	15	15	
Reviewer Comments	200 homesites: does this equate to 200 property owners?			
4	Proposed treatment(s) address insects and disease, drought mortality, invasive species, storm damage or enhances wildlife habitat	15	10	
Reviewer Comments	Treatments will focus on overstocked stands and disease: what disease? Could have connected drought (juniper) and/or climate resiliency (overstocked stands) here			
5	Clearly demonstrates collaborative approach including treatment proximity to previous or planned hazardous fuel treatments	10	7	
Reviewer Comments	Clearly prioritized work based on collaborative landscape efforts in the area, treatment proximity is not well articulated nor displayed on map			
6	Proposed treatment(s) benefit vulnerable populations or under protected properties	10	6	
Reviewer Comments	Will prioritize vulnerable populations and treats under protected properties, how will prioritization occur?			
7	Treatment area references a forest management plan or is located within a priority planning area listed in Funding Priority 6	10	0	
Reviewer Comments	None listed			
8	Project utilizes non-traditional forest products	5	2	
Reviewer Comments	States firewood will be utilized, how much? Just benefiting the property owner or provided to others?			
Final Score		Out of 100	70	