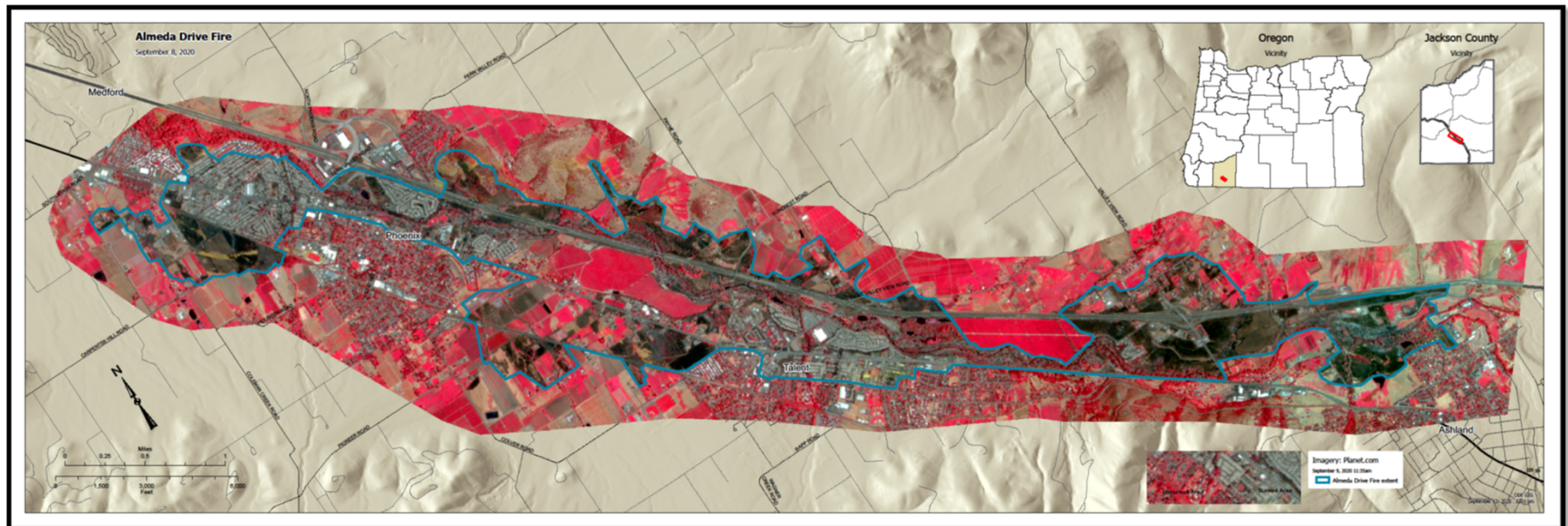


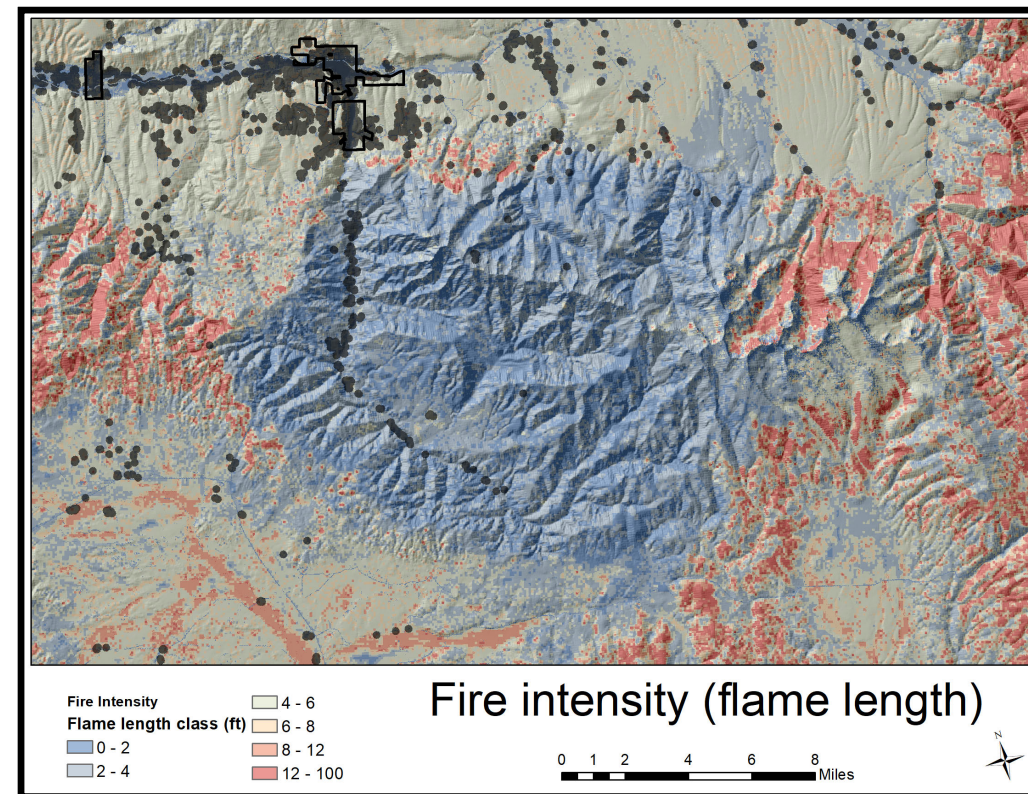
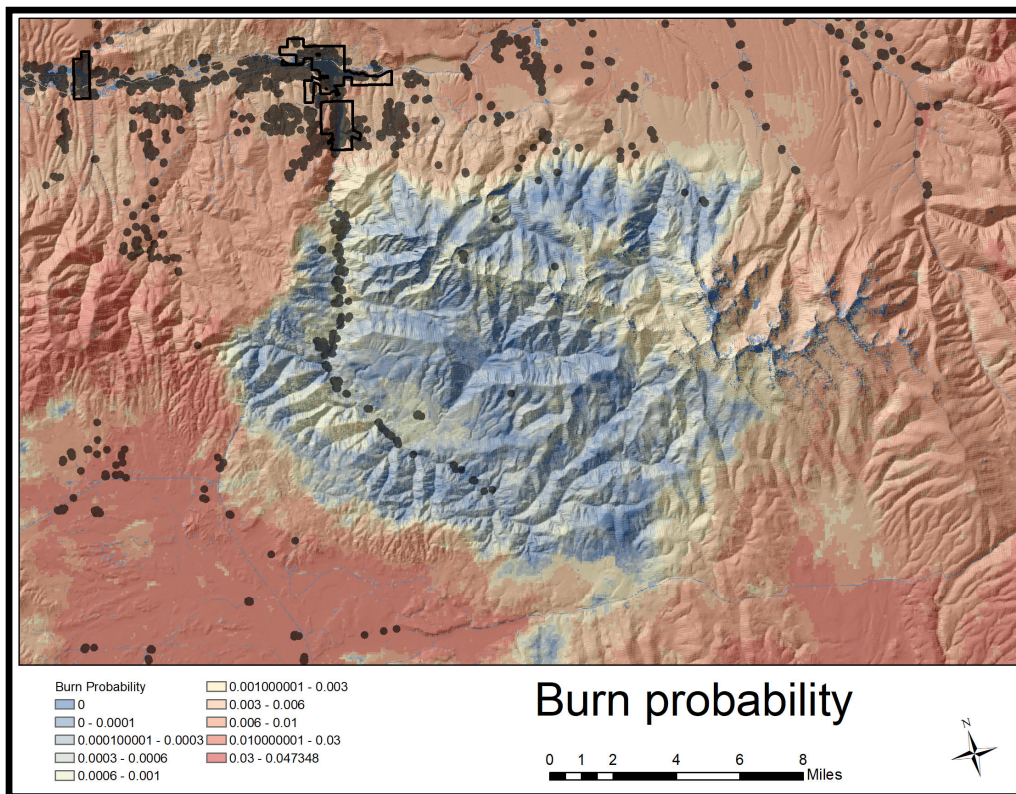
Background Presentation for WUI and Risk Mapping RAC

11/18/2021

Dr. Christopher J Dunn, College of Forestry, Oregon State University, chris.dunn@oregonstate.edu
Dr. Erica Fischer, College of Engineering, Oregon State University, erica.fischer@oregonstate.edu



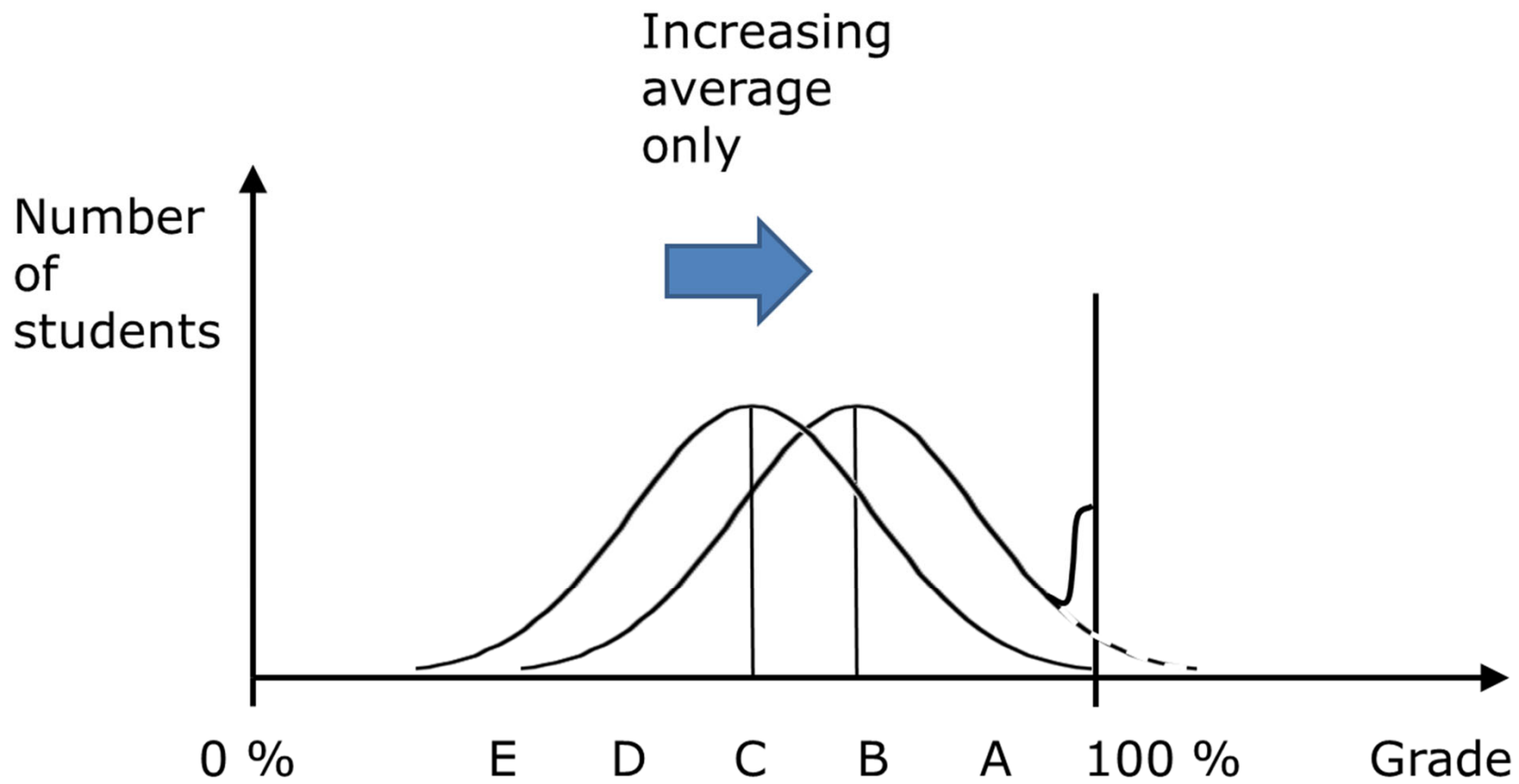
Effects of recent fires on burn probability and fire intensity: 2015 Canyon Creek Fire



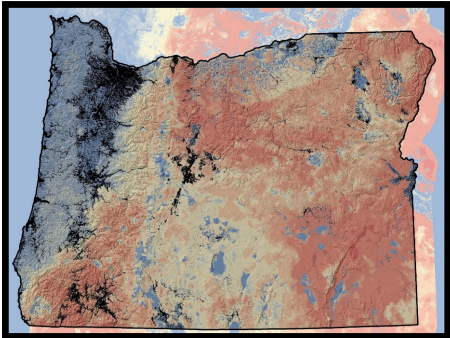
Question 16 Background Information

Thank you to Sam, Tim, Jenna, Adam and Derek for all their help getting this together.



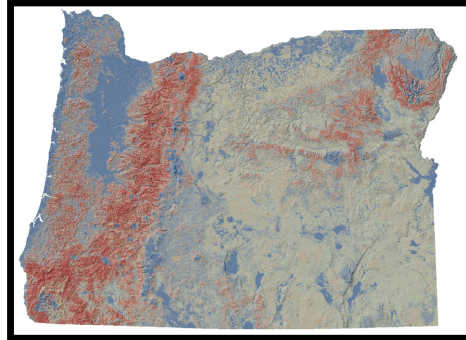


Burn probability

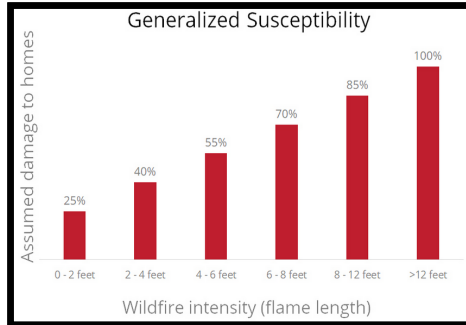


X

Fire Intensity

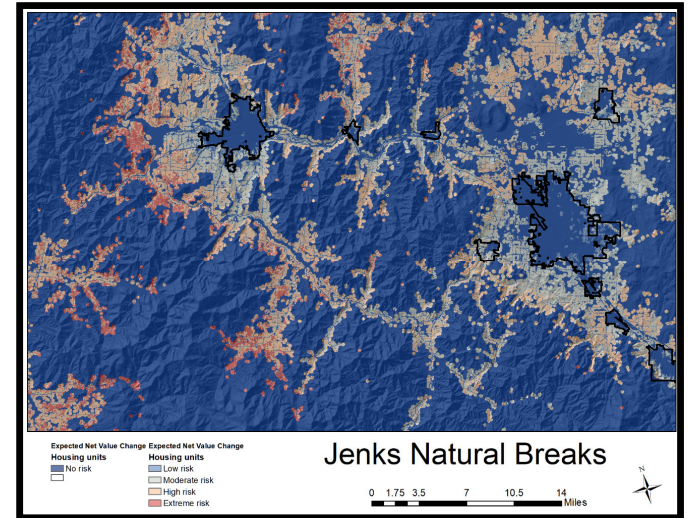
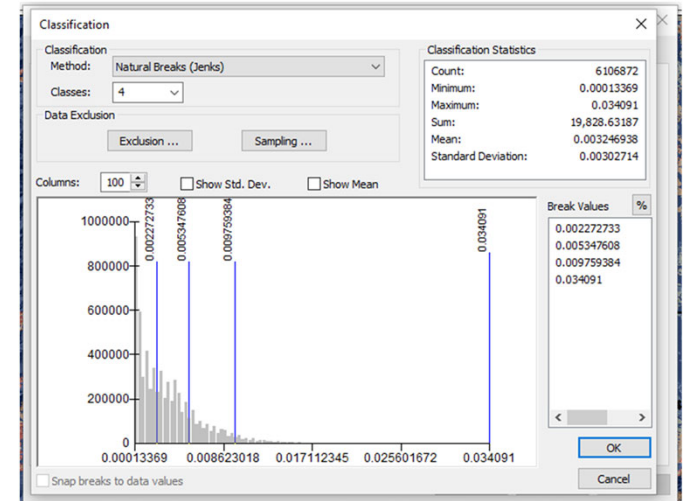


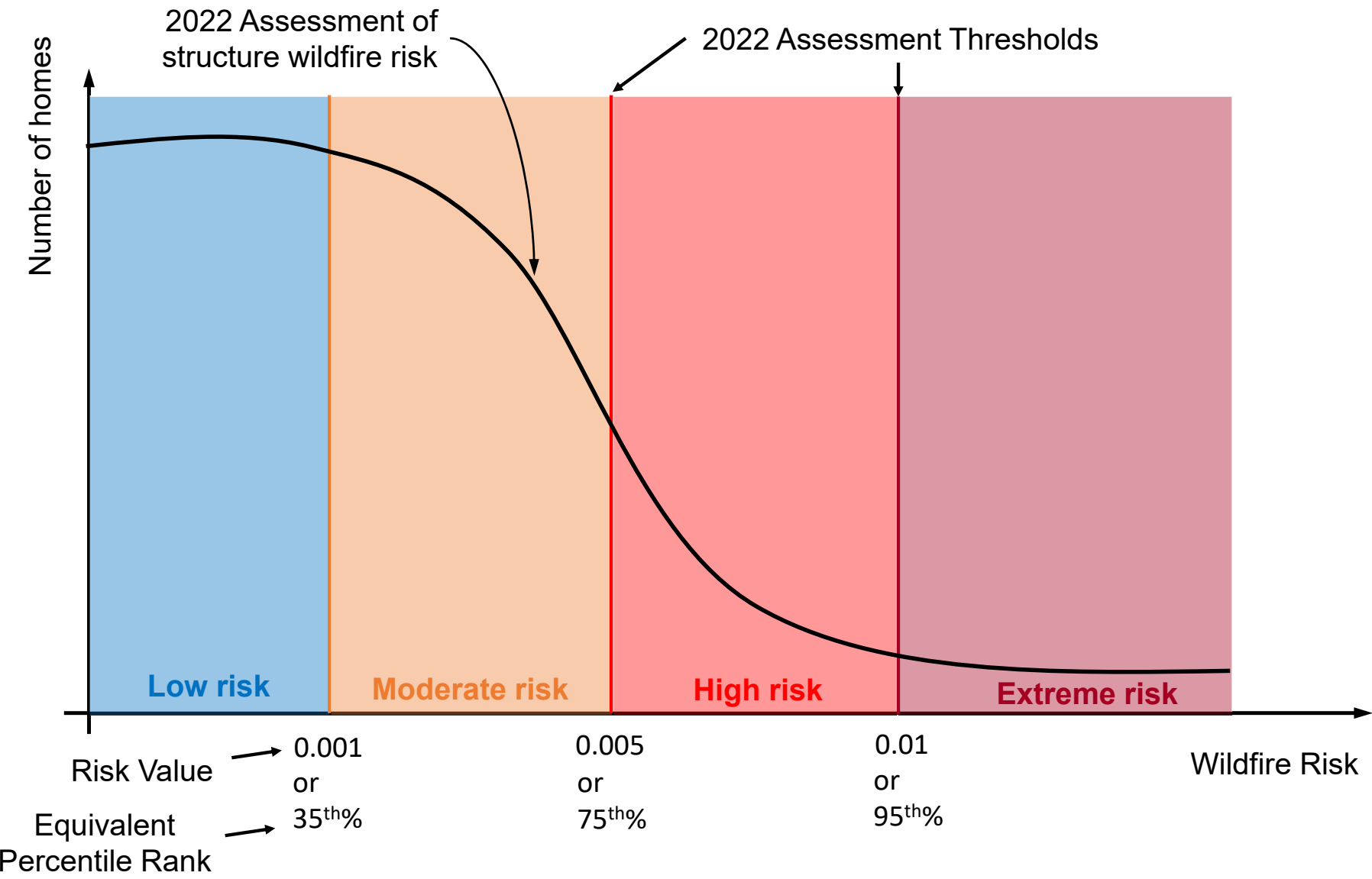
Generalized Susceptibility



<https://wildfirerisk.org>

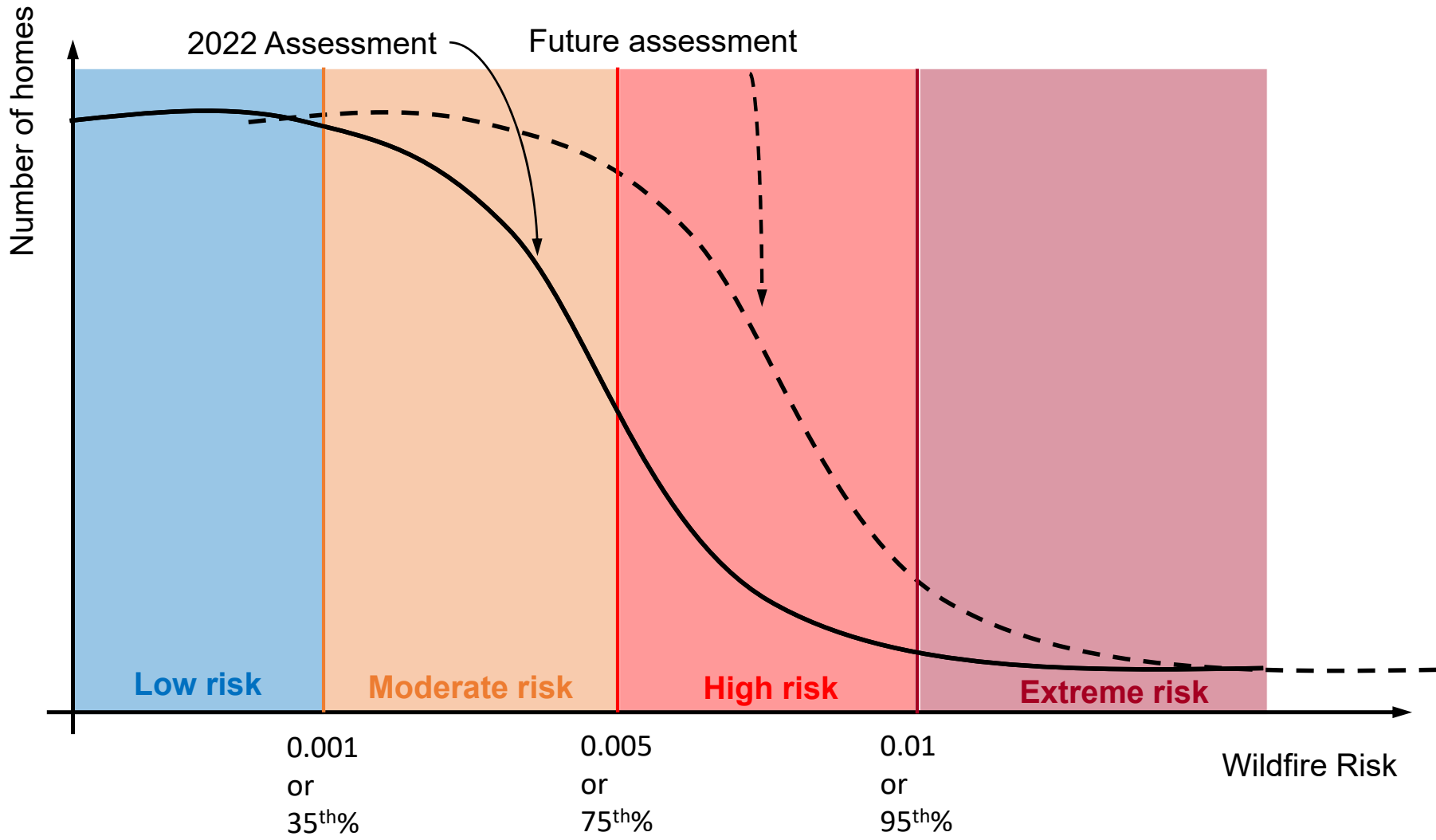
=





Risk Value → 0.001
or
0.005
or
0.01

Equivalent Percentile Rank → 35th
or
75th
or
95th



2022 Assessment

Future assessment

Number of homes

Low risk

Moderate risk

High risk

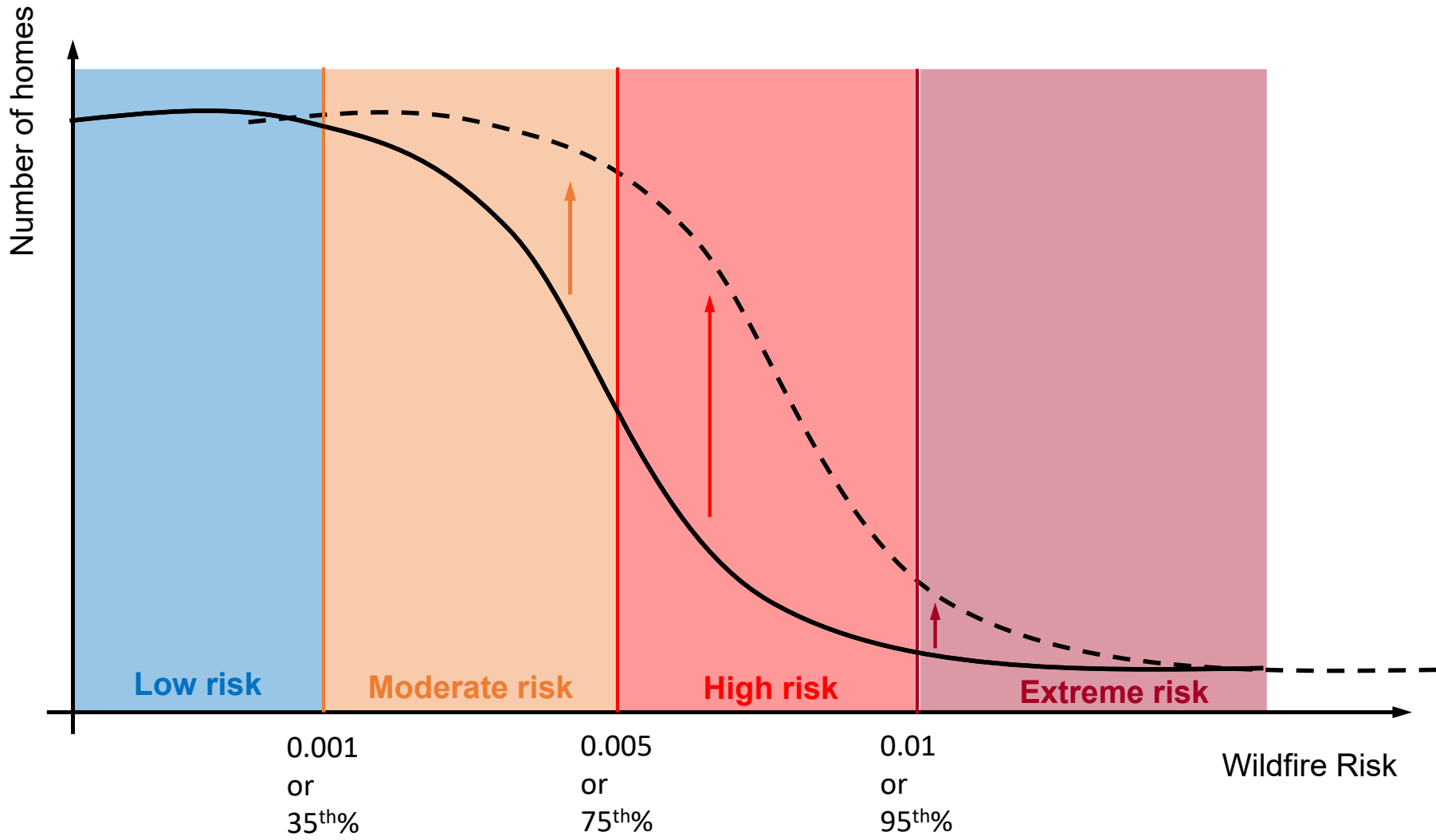
Extreme risk

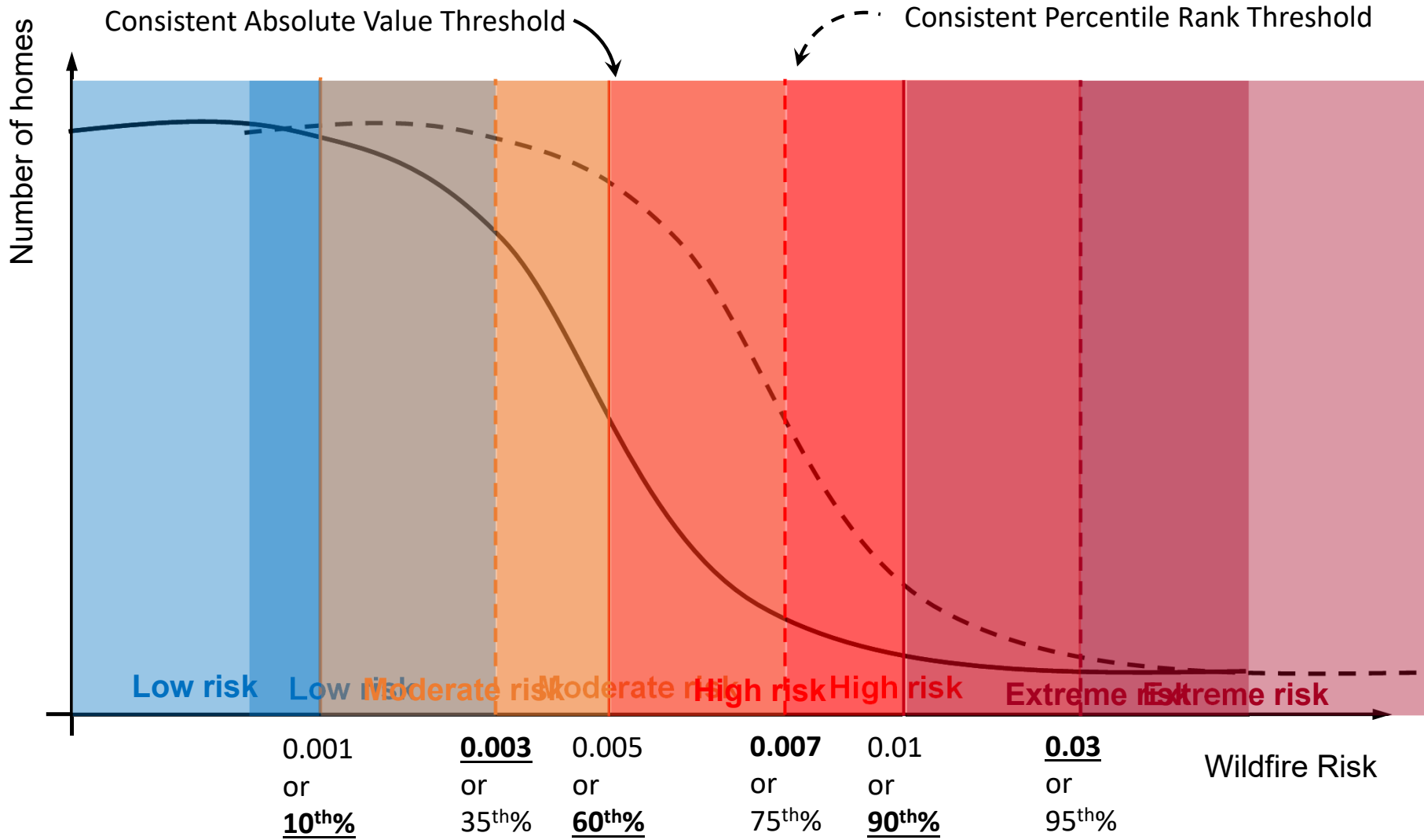
0.001
or
35th%

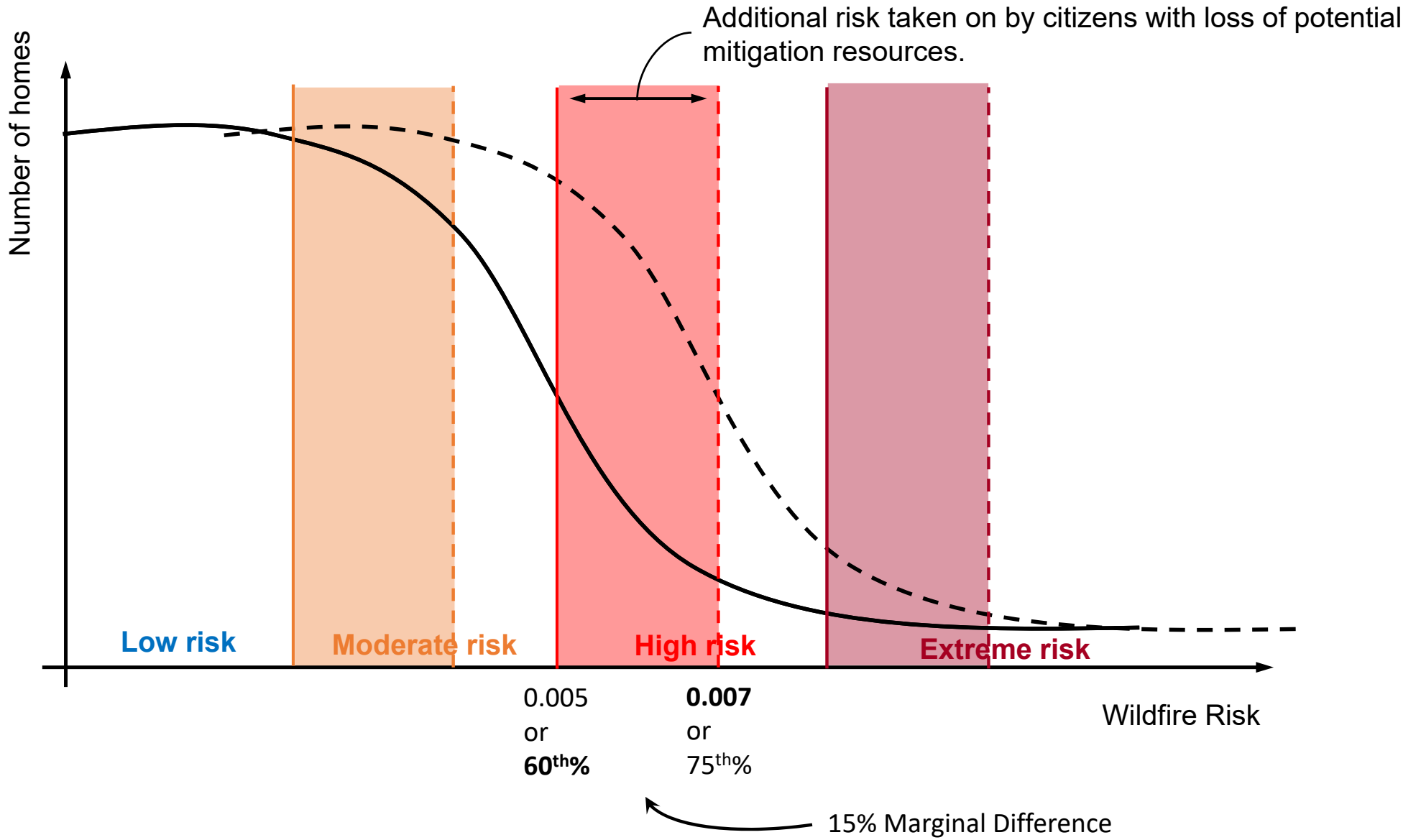
0.005
or
75th%

0.01
or
95th%

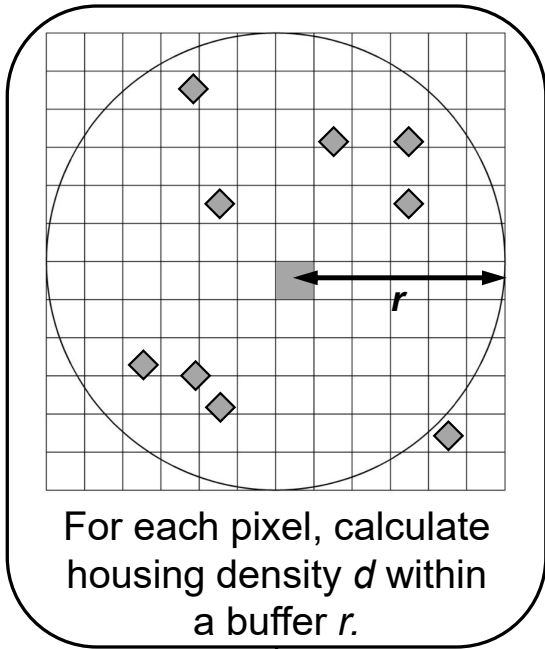
Wildfire Risk







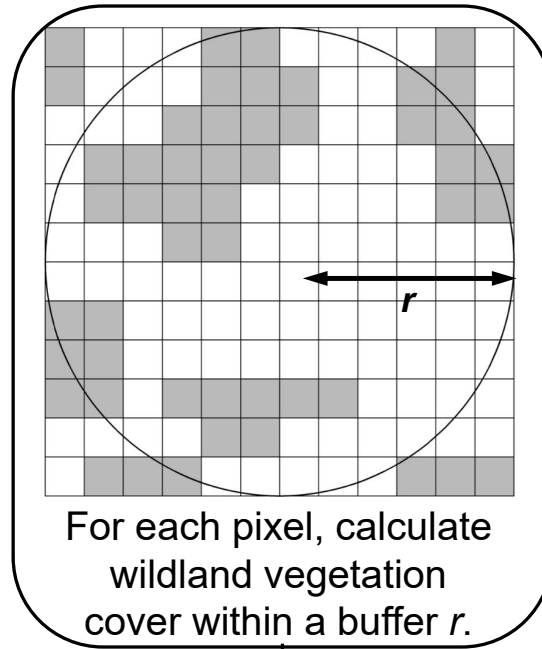
THE END



$d > 6.17 \text{ houses/km}^2$?

No

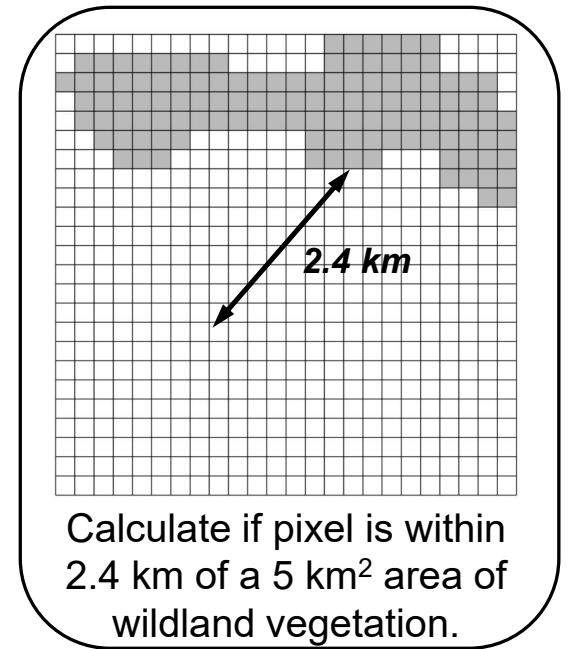
Non WUI



Cover $> 50\%$?

Yes

Intermix WUI



Within 2.4 km of $> 5 \text{ km}^2$ of vegetation?

Yes

Interface WUI

Yes

No

