

**Dropout Rates
in Oregon High Schools**

2000-2001

State Summary Report

January 2002

**Stan Bunn
State Superintendent of Public Instruction**

**Oregon Department of Education
255 Capitol Street NE
Salem, OR 97310-0203**

The officially codified and compiled Oregon Administrative Rules are published by the Secretary of State and portions of that published compilation have copyright status. Any Oregon Administrative Rules presented on these pages are not the official version of the rules published by the Secretary of State.

It is the policy of the State Board of Education and a priority of the Oregon Department of Education that there will be no discrimination or harassment on the grounds of race, color, sex, marital status, religion, national origin, age or disability in any educational programs, activities or employment. Persons having questions about equal opportunity and nondiscrimination should contact the State Superintendent of Public Instruction at the Oregon Department of Education.

Complimentary copies have been distributed to all Oregon schools and districts.
Additional copies are available from the Department of Education's Documents Clerk at
503-378-3600 ext. 4498
Or may be downloaded at
<http://dbi.ode.state.or.us/dropout.htm>

Please share this document with your colleagues!
All or any part of this document may be photocopied for educational purposes
without permission from the Oregon Department of Education.

January 16, 2002

Dear Fellow Oregonians:

Oregonians share a common hope for a highly educated and caring citizenry. Passion for improvement and strong leadership guides the way to this vision. Daily, in schools across Oregon, dedicated parents, skilled teachers and administrators propel this vision from hope to reality. It is in this spirit that public education in Oregon demonstrates commitment to the relentless pursuit of each student's success.

During the past school year, Oregon students have shown steady growth and improvement, due in large part to the efforts of school administrators, teachers and other educators who work alongside parents to help students succeed. The Oregon legislature has also placed preK-16 education among their top issues. This collaboration undergirds Oregon's education improvement efforts.

This report, the 10th annual Dropout Rates in Oregon High Schools: 2000-01 State Summary Report points to much progress: a reduction in the state dropout rate for the third consecutive year, a decrease in the African-American and Hispanic dropout rates over the past five years, and increasing attention and leadership to this significant issue in Oregon. However, much remains to be done.

As long as any student in Oregon drops out of school, our work is not done. Children and youth throughout our state require a high quality school system that is responsive to individual needs and interests. In addition, there are a variety of personal and family factors that significantly impact dropout choices, in turn, defining the need for more comprehensive school and community collaboration.

I invite the citizens of Oregon to join the State Board of Education, all school superintendents, principals, teachers and educators across our state in working to eliminate school dropout. Our collective leadership and passion for providing a meaningful and relevant education for each Oregon student is our legacy.

Sincerely,

A handwritten signature in black ink that reads "Stan Bunn". The signature is written in a cursive, flowing style.

Stan Bunn

Table of Contents

	Page
List of Tables.....	iv
List of Figures.....	iv
Key Findings from the State Summary Report.....	1
Executive Summary	2
The Faces of Oregon Dropouts.....	4
Why the Rate Went Down.....	7
Race/Ethnicity	7
Age and Sex.....	8
Region	9
Timing.....	9
Credit Deficiency	10
Statewide Assessment Scores of Dropouts.....	11
Employment.....	12
Why Students Dropped Out.....	13
GED	15
Alternative High Schools	16
Charter Schools	16
Appendix A—How Dropout Rates Are Calculated	17
Appendix B—Oregon Drop Out Reporting and NCES Standards.....	19
Appendix C—Oregon’s Dropout Rates: Event Rates, Status Rates, and Cohort Rates.....	20
Appendix D—Tables	21

List of Tables

Text Tables

1 – Dropouts and Dropout Rates, Grades 9-12, by Background Characteristics: 2000-01	5
2 – Factors Influencing the Decision to Drop Out, Grades 9-12: 2000-01	15
3 – Number of School-aged Children Earning a GED: 1993-94 to 2000-01	16

Appendix Tables

A1 – Number of Non-dropouts and Dropouts; Dropout Rates: 2000-01	
A2 – Dropouts by Sex, Race, and Grade, Grades 9-12: 2000-01	
A3 – Time Enrolled in District, Circumstances Upon Withdrawal, Rescinded Students: 2000-01	
A4 – Factors Influencing the Decision to Drop out: 2000-01	
A5 – Factors Influencing the Decision to Drop out, by Race, Sex, and Grade: 2000-01	
A6 – Number of Non-dropouts and Dropouts; Dropout Rates, Grades 7-8: 2000-01	
A7 – Dropout Rates By Race/Ethnicity, 1991-92 to 2000-01: 2000-01	

List of Figures

1 – Annual Dropout Rates From Grades 9-12 In Oregon Public Schools: 1991-92 to 2000-01.....	6
2 – Dropout Rates by Race/Ethnicity, Grades 9-12: 1991-92 to 2000-01.....	8
3 – Dropouts by Age and Sex, Grades 9-12: 2000-01.....	9
4 – Dropouts by Month, Grades 9-12: 2000-01	10
5 – Number of Dropouts by Age and Credits Earned, Grades 9-12: 2000-01	11
6 – Percent of Students Meeting CIM Performance Standards.....	12
7 – Relationship Between the Unemployment Rate and Withdrawal During the Junior and Senior Years in Oregon: 1980 to 2000.....	13

Dropouts in Oregon Schools

Key Findings from the 2000-01 State Summary Report

Oregon Reduces Number of School Dropouts by 16%

Superintendent Stan Bunn, in concert with Department of Education staff and the State Board of Education, set an ambitious goal for the 2001-03 biennium: to reduce the number of Oregon school dropouts by 2,000 students (20%). During the 2000-01 school year, the number of school dropouts declined by 1,650 students from the 1999-2000 school year, a reduction of 16% to date.

State Dropout Rate Declines for Third Consecutive Year

- The 2000-01 school year marks the third annual decrease in the statewide dropout rate.
- This year's dropout rate is 5.25%, down from 6.3%, 6.6% and 6.9% in successive past years.
- 8,713 students were classified as school dropouts during the 2000-01 school year.
- The African-American student dropout rate (11%) and Hispanic student dropout rate (11.3%) are more than double the state rate, but both have declined in the last five years.

The State Board of Education and the Oregon Department of Education, in partnership with superintendents, administrators, counselors and teachers, are committed to each student's success in eliminating school dropout. Best practices for dropout prevention include relevant and personalized instruction, along with strong relationships between school staff and students that build resiliency against factors that contribute to school dropout.

Why Students Drop Out of School

Of the 8,713 school dropouts in the 2000-01 school year five top reasons were cited for dropping out:

1. Credit deficiency—not enough credits to graduate (1,248)
2. Lack of parental support for education (1,210)
3. Dysfunctional home life (864)
4. Working more than 15 hours per week (792)
5. Substance abuse (537)

These reasons, now established factors leading to school dropout, suggest a pattern of significant personal and family factors as dominant influences, along with school-related issues, in impacting credit deficiency, school success, and subsequent school dropout.

The Cost of Dropouts In Oregon

Oregon school dropouts...

- Comprise at least 79% of the Oregon adult prison population at time of incarceration ¹
- Are four times as likely to be covered by the Oregon Health Plan, as are persons with at least a high school diploma ²
- Are more than twice as likely to be unemployed than students who graduate ³
- Are earning 30% less in wages than students who graduate ³

¹ Oregon Department of Corrections

² Oregon Health Plan

³ Oregon Employment Department

Executive Summary

This is the tenth annual report on dropouts in Oregon schools published by the Oregon Department of Education since the report was established by the Legislature in 1991 (ORS 339.505 to 339.520). This report presents information on students who left school from grades 7 through 12 between July 1, 2000, and June 30, 2001. The Department summarizes the reports on dropouts in grades 9 through 12 at the school, district, county and state levels. A statistical profile is also included summarizing information on these students.

To compile the information for this report, Oregon school districts are required to report to the Department of Education students who are identified as dropouts, as defined in statute (ORS 339.505). Briefly, a dropout is a student who withdraws from school without receiving a high school diploma, GED Certificate, or modified diploma, or transferring to another school. A variety of information is provided on each student. This makes it possible to describe dropouts with respect to several characteristics. It is important to understand the common characteristics and the reasons students leave school to develop effective strategies for assuring students stay in school and preparing all students for successful adulthood.

Leadership for Change

In 1999, the State Board of Education and the Oregon Department of Education adopted as a mission the relentless pursuit of success for each student. All projects and initiatives are carefully examined to determine how they contribute to this central mission of the Department. In examining the results of the annual statewide drop out rate for the 1999-2000 school year, State Superintendent Stan Bunn, in concert with Department staff and the State Board of Education, determined that while the drop-out rate had declined, the loss of more than 10,000 students per year was unacceptable.

The Department set a goal for the 2001-03 biennium of reducing the statewide drop-out rate by 20 percent and presented a policy proposal to the 2001 Legislative Assembly for funding to develop a comprehensive drop out prevention and recovery program. Although the proposal was not funded, legislators encouraged the Department to seek other sources of funding and to pursue dropout prevention strategies to the degree possible within the existing budget.

This report, based on the 2000-01 school year, reflects the leadership of the Department of Education and Oregon schools and districts to assure the success of all students by using a variety of strategies to help students stay in school and complete their education. Considerable gains have been made at the mid-point of this biennium, with a decline in the statewide dropout rate of approximately one percent. However, much work remains to be done. While we celebrate the success of the 1,650 additional students who remain in school this year compared to last year, for those students who dropped out and those who are at-risk of dropping out in the future, efforts to bring students back to school and prevent others from leaving must continue.

2000-01 Results

The statewide annual dropout rate was 5.25 percent in the 2000-01 school year, a decline from 6.30 percent in 1999-2000. The synthetic four-year dropout rate for 2000-01 was 15.65 percent, down from 18.37 percent in 1999-2000.

Additional findings include the following:

- Reasons for leaving most often cited include: too far behind in credits to catch up, working more than 15 hours a week, dysfunctional home life, lack of parental support for education, frequent discipline referrals, substance abuse, and pregnant or student parent. One or more of these five reasons were cited by 37 percent of all dropouts.
- The rank order and magnitude of the factors influencing the decision to drop out have been much the same in the last four years of dropout reporting. This suggests that these are established factors that affect a student's ability to continue to stay in school.
- The dropout rates for African American students and Hispanic students are more than double the overall statewide rate, but have steadily declined in the last five years. The Hispanic dropout rate declined by over 1.5 percentage points for the third straight year. The African-American dropout rate remained unchanged in the last three years of overall declines.
- A primary characteristic of students who drop out is significant deficiency in credits toward a high school diploma. Among all dropouts, only 1,617, or about one out of five, were classified as on track to graduation when they dropped out.
- Of the 667 seniors who finished all four years of high school but did not graduate in June 2001, 273 (41 percent) were within two credits of earning their diploma.
- Almost 26 percent of students counted as dropouts for the 2000-01 school year completed the 1999-2000 school year, but did not return the following fall.
- Over 43 percent of the number of dropouts statewide come from the Metro region (Clackamas, Multnomah, Washington counties). Those counties contain 39% of the total 9-12 statewide student population.

The Faces of Oregon Dropouts

Why is dropping out a problem that we should try to solve? There is ample research that shows dropouts have lower lifetime incomes, higher unemployment rates, higher divorce rates, comprise a majority of the incarcerated population, have more difficulty obtaining credit, all at a cost to themselves and to society. The answer, based on these facts, is that we must prevent students from dropping out in order to avoid social costs. While these facts cannot be denied, adopting this rationale for dropout prevention creates an image of the at-risk student as a potential burden we wish to avoid—a potential liability we wish not to incur. There is another way of looking at our at-risk students.

Rather than viewing at-risk students as a potential liability, educators prefer to regard these students as assets who need extra love, respect, and care to fully realize their potential as individuals and as members of society. Schools that have successful dropout prevention activities are doing so on this basis. Dropping out is a human problem, not a technical one. A feeling of community is present in parent-teacher conferences, faculty meetings, and school board meetings, and creates a nurturing atmosphere. Positive achievement rather than preventing failure is a key focus in relentlessly pursuing each student's success.

This dropout report provides the state with a uniform and accurate system of accounting for students who leave school before graduating. The report presents dropout rates for each regular or alternative high school that awards a diploma, and rates for regular elementary, middle, and junior high schools offering grades 7 and 8. While dropout rates show the relative effectiveness of schools in retaining students, it is the count of students that speaks to the need for dropout prevention. Simply put, rates do not drop out – students do. The number of students directly impacts the level of resources needed to address dropout prevention and retention. A school asking the question, “How can we keep students in school?” rather than “How do lower our dropout rate?” will find more productive and child-centered answers.

Students do not all drop out at one particular time, but throughout the school year. This annual report cannot assess an ongoing problem in such a way that action can be taken when it is needed in every case. For this reason, the Department encourages districts, schools, and interested parties to use the information gathered in this report as a starting point for building their own dropout information system, and to use that system to make periodic reports to administrators, school board members, and the community throughout the school year, with the commitment to assure all students successfully complete high school.

Who Is A Dropout?

A dropout is a student who withdrew from school and did not graduate or transfer to another school that leads to graduation. Dropouts do not include students who:

- are being home schooled,
- are enrolled in an alternative school or hospital education program,
- are enrolled in a juvenile detention facility,
- are enrolled in a foreign exchange program,
- are temporarily absent because of suspension, a family emergency, or severe health problems that prevent attendance at school,
- received a GED certificate,
- received an adult high school diploma from a community college,
- received a modified diploma, or
- are deceased.

Rules developed by the Department of Education ensure a complete accounting of students who drop out during the school year, as well as students who drop out between school years.

For more information on how dropouts are counted, see the [Oregon Dropout Reporting Manual](http://dbi.ode.state.or.us/manuals.htm) at <http://dbi.ode.state.or.us/manuals.htm>

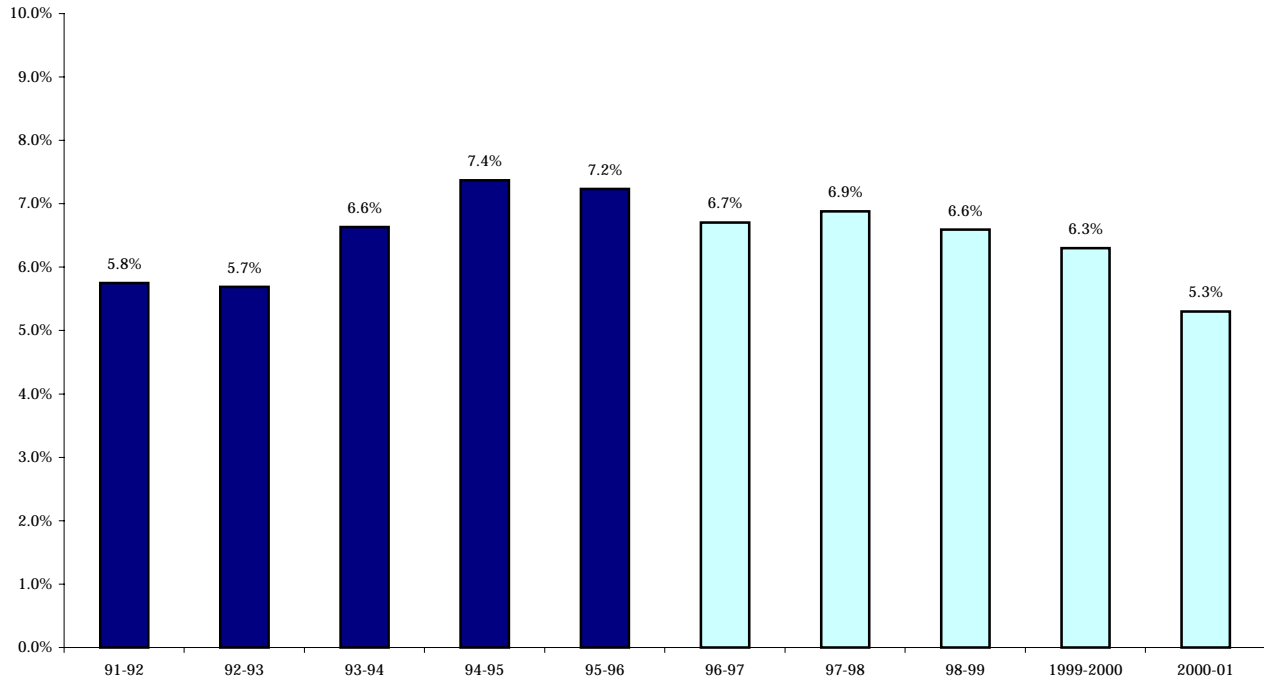
**Table 1—Dropouts and Dropout Rates, Grades 9-12,
By Background Characteristics: 2000-01**

Characteristic	Number of Students Enrolled	Percent of All Students	Number of Dropouts	Percent of All Dropouts	Dropout Rate (%)
Total	166,039	100.0	8,713	100.0	5.25
Age					
13		-	14	0.2	--
14		-	471	5.4	--
15		-	965	11.1	--
16		-	1,724	19.8	--
17		-	2,176	25.0	--
18		-	2,180	25.0	--
19		-	775	8.9	--
20+		-	395	4.5	--
Unknown age		--	13	0.2	--
Race/Ethnicity					
White	135,993	81.9	6,099	70.0	4.5
Black	4,126	2.5	452	5.2	11.0
Hispanic	13,172	7.9	1,486	17.1	11.3
Asian/Pacific Islander	6,679	4.0	294	3.4	4.4
AmerInd/AlaskNative	3,202	1.9	268	3.1	8.9
Unknown	2,867	1.7	114	1.3	4.7
Sex					
Male		-	4,760	54.6	--
Female		-	3,953	45.4	--
Region¹					
Northwest	8,025	4.8	372	4.3	4.6
Metro	64,778	39.0	3,769	43.3	5.8
WValley	46,158	27.8	2,416	27.7	5.2
South	22,728	13.7	1,244	14.3	5.6
North Central	10,971	6.6	459	5.3	4.2
Southeast	5,792	3.5	179	2.0	3.1
Northeast	7,587	4.6	274	3.1	3.6

N/A—Population totals for these categories are not available for calculating percentages.

¹Northwest—Clatsop, Columbia, Lincoln, Tillamook; Metro—Clackamas, Multnomah, Washington; WValley—Benton, Lane, Linn, Marion, Polk, Yamhill; South—Coos, Curry, Douglas, Jackson, Josephine; North Central—Crook, Deschutes, Gilliam, Hood River, Jefferson, Sherman, Wasco, Wheeler; Southeast—Harney, Klamath, Lake, Malheur; Northeast—Baker, Grant, Morrow, Umatilla, Union, Wallowa.

**Figure 1—Annual Dropout Rates from Grades 9-12
in Oregon Public Schools: 1991-92 to 2000-01**



Note: Beginning with 1996-97, GED recipients were not counted as dropouts.

The 2000-01 dropout rate for grades K-12 was 5.25 percent. This is a decrease from the rate of 6.30 percent reported a year earlier. This is the third consecutive annual decrease in the one-year dropout rate. The synthetic four-year dropout rate based on 2000-01 data was 15.67 percent, down from 18.37 percent in 1999-2000.

Why the Rate Went Down

The decrease of over one percentage point is the largest one-year decrease in the ten-year history of dropout reporting in Oregon. There are two major reasons why this happened.

First, schools are beginning to devote more resources to dropout prevention. Schools that had large decreases in their dropout rate commonly cited two factors that contributed to the decline—increased attention paid by school staff to students having attendance and academic difficulties, and increased alternative education options, both inside and outside the school.

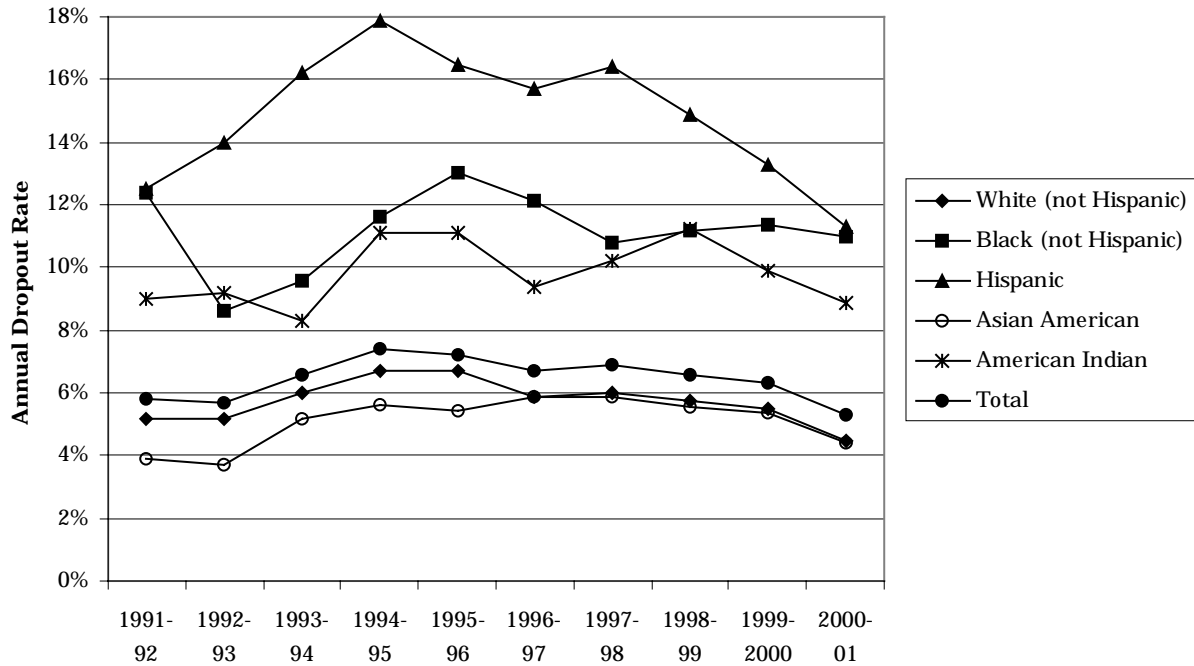
Second, school staff members are devoting more resources to getting the dropout count right. Several schools reported that clerical staff spent more time tracking withdrawn students to find out which school they had transferred to. This reduces the number of transfers erroneously reported as dropouts.

Race/Ethnicity

Dropout rates for all racial/ethnic groups declined in 2000-01. The largest decline was seen in the Hispanic dropout rate, which fell to an historic low of 11.3 percent, continuing a steady annual decline in the last three years. This decline is occurring at the same time that Hispanic enrollment is increasing at record levels every year. Schools are realizing the need to prioritize services and opportunities to this growing population. It is no longer practical to disregard the needs of these children as they will become a larger portion of the state's overall classroom.

Schools are taking advantage of leadership and academic programs such as the Oregon Hispanic and Migrant Student Leadership Institute, the Cesar Chavez Leadership Conference, and the efforts of the Oregon Council for Hispanic Advancement. In addition, professional development and training opportunities are being offered to help educators and service providers work with this fast growing population.

Figure 2—Dropout Rates by Race/Ethnicity, Grades 9-12: 1991-92 to 2000-01



Schools that saw a significant decrease in their Hispanic dropout count include Hood River Valley High School (from 40 Hispanic dropouts to 13), Forest Grove High School (43 to 22), Umatilla High School (24 to 4), and McMinnville High School (38 to 20), Hillsboro High School (41 to 25), Sunset High School (49 to 34) and Riverside High School (17 to 3).

The dropout rate for white students has gone down each of the last three years, matching the overall decline in the dropout rate. Because so many dropouts are white (70 percent), movement in the overall dropout rate is a reflection of the movement in this racial group. Dropout rates for Asian/Pacific Islander students have paralleled the downward trend of the statewide dropout rate that occurred in the last three years. The dropout rate for American Indian/Alaskan Native students showed the second year of decline, reversing an upward trend in the two years before that. The dropout rate for African-American students has stayed fairly level for the last three years, despite the downward trend in for all the other racial/ethnic groups. While the gap between the state rate and the racial/ethnic-specific rate is decreasing for three minority groups, it is widening for African-American students. Additional drop out prevention efforts are needed to reach this group of students.

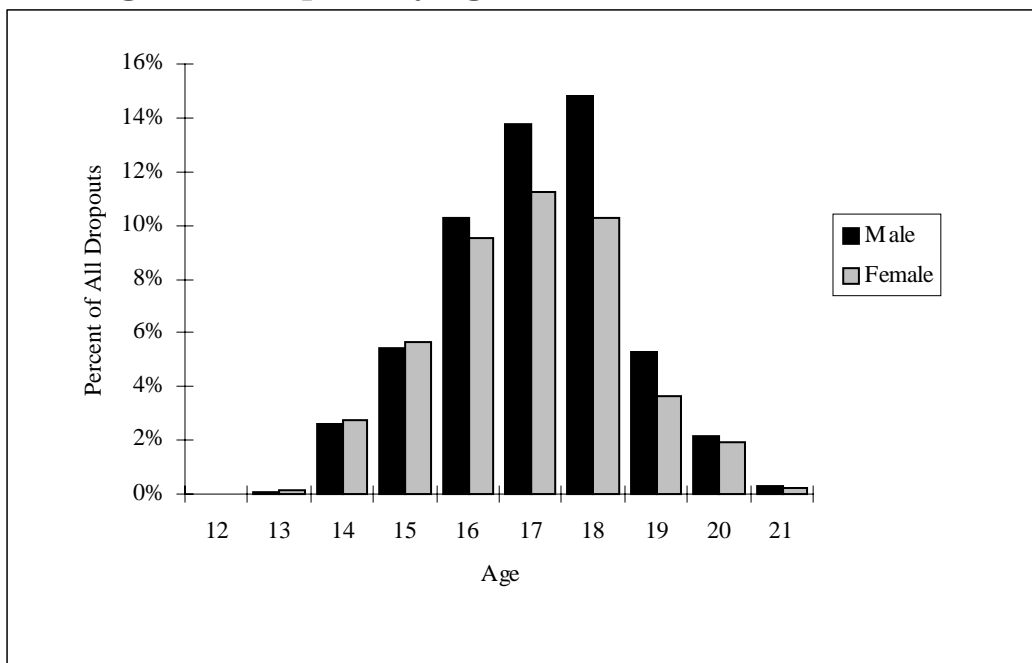
Age and Sex

As shown in figure 3, the incidence of dropping out in the secondary grade age groups is greatest at ages 16, 17, and 18. Two-thirds of all dropouts from grades 9-12 were in that age range. The number of dropouts at ages 15 and 19, though smaller, is still substantial.

Fewer females (3,953 45.4%) than males (4,760 54.6%) dropped out, which is consistent with findings of each year in the study prior to 2000-01. Even when taking into account that there are more males than females in this age group in the general population, it appears that boys drop out at higher rates than girls.

When age and sex are combined, other consistent patterns emerge. Males and females drop out in about the same numbers through ages 16, but after that, males drop out in greater numbers than females do. The peak ages for males to drop out are, from highest to lowest, at age 18, 17, and 16. For females, the peak ages are arranged differently—17, 18, and 16. While males aged 15 and 19 tend to drop out in about the same numbers at each age, the number of females age 15 who drop out is much greater than the number who drop out at age 19. This is a consistent pattern for females.

Figure 3—Dropouts by Age and Sex Grades 9-12,: 2000-01



Region

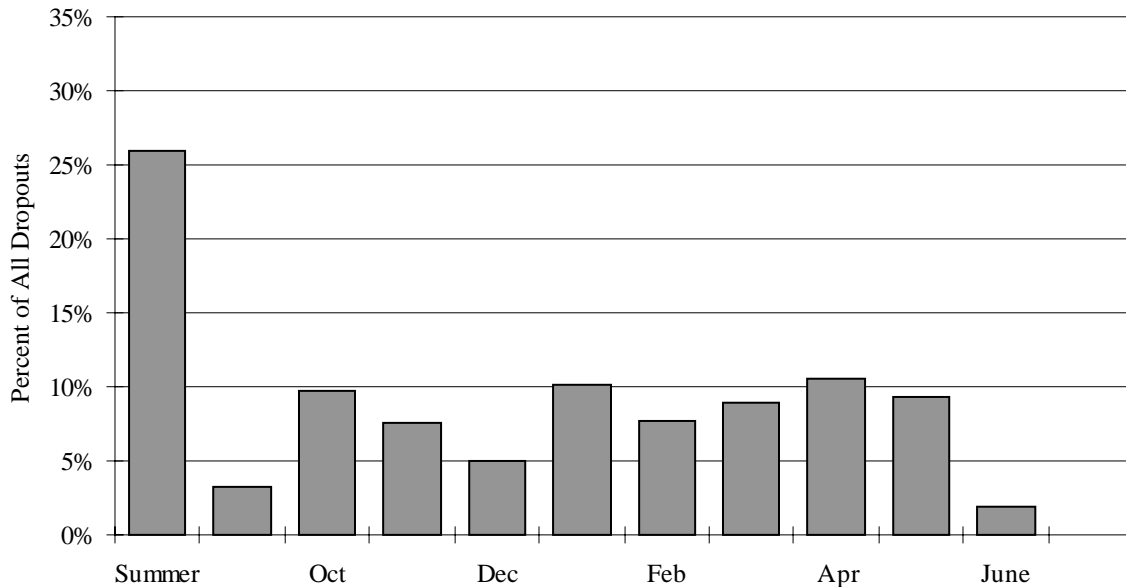
Oregon can be divided into seven regions that are linked by geography and economy. The range of dropout rates by region varies over a narrow band, from 5.8 percent in the Metro region to 3.1 percent in the Southeast region (table 1). The number of dropouts in these two regions is vastly different, however—3,769 in the Metro region, and 179 in the Southeast region.

The Metro region showed the greatest improvement in the number of students dropping out. Almost five hundred fewer students dropped out from that region’s schools in 2000-01 than in 1999-2000, and the dropout rate for the region fell from 6.7 percent to 5.8 percent. Still, over 40 percent of the number of dropouts statewide come from this region.

Timing

A look at dropout counts by month shows definite patterns that are consistent from year to year. A large number of students drop out not during the school year, but over the summer. Almost 26 percent of students counted as dropouts for the 2000-01 school year completed the 1999-2000 school year, but did not return the following fall, and never attended school in 2000-01.

Figure 4—Dropouts by Month, Grades 9-12: 2000-01



Dropping out has peaks by month at four distinct times. After the first peak in the summer break, when many students have already carried out their decision to drop out, a small number of students drop out in September. The second peak occurs in October, with fewer students dropping out in November and December. In January the third peak emerges, and the fourth peak occurs in April. While the reason why these three phases exist is not completely known, it should be noted that the start of each phase follows a break from school—summer vacation, holiday break, and spring break. An official break from attending school, even as brief as one week, might be enough to nudge some students away from school and towards some other activity. January is also the time when first semester examinations are given. Some students may choose to leave school rather than take tests they believe they will do poorly on.

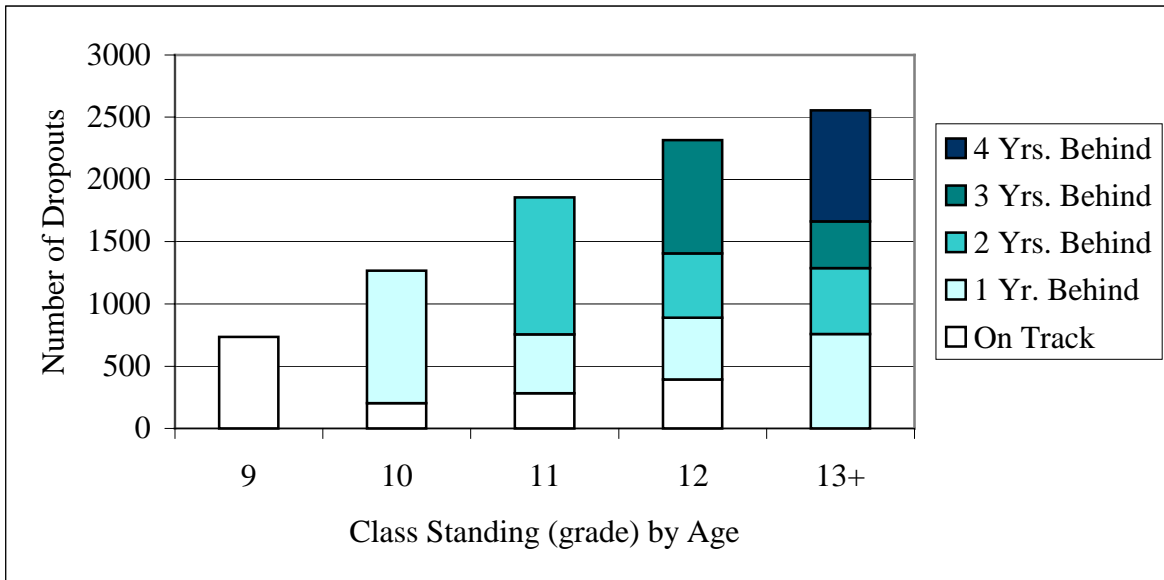
During the 2000-01 school year, the Department sent letters to all principals pointing out this trend, and reminding them to monitor the attendance of students immediately following vacation breaks so school officials can intervene if a particular student’s attendance begins to be sporadic.

Credit Deficiency

While credit deficiency is not the sole cause or even a necessary cause of a student dropping out, the vast majority of students who drop out are credit deficient. The following analysis shows how many dropouts are credit deficient, how far behind they are, and what kind of students tend to experience credit deficiency.

Credit deficiency is analyzed by assigning a class standing in two ways. First, an expected grade was assigned based on a student’s age, assuming a normal school entry age and annual grade promotions. This tracks the student’s progress toward graduation at age 18. Second, grade levels are assigned based on the percentage of the required credits the student had upon withdrawal from school (e.g., dropouts with less than 25 percent of the required credits would be classified as 9th graders, those with more than 25 percent but less than 50 percent would be classified as 10th graders, and so on).

Figure 5—Number of Dropouts by Age and Credits Earned, Grades 9-12: 2000-01



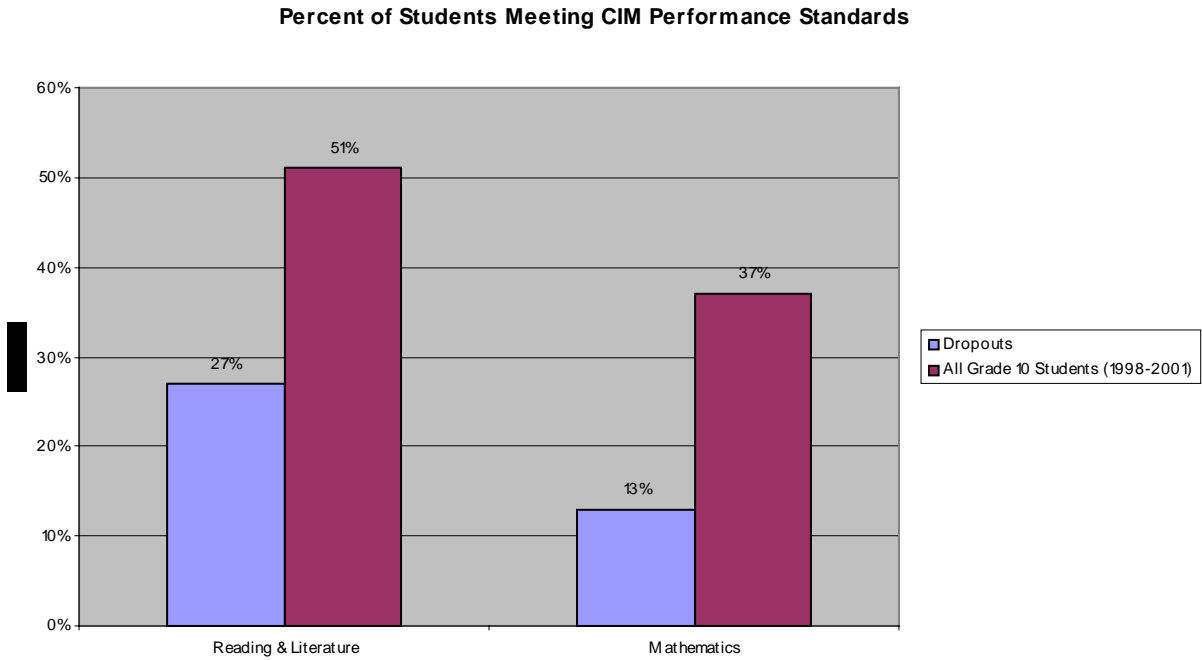
These two assigned grade levels were combined to determine whether a student’s class standing by credits earned was the same as or higher than the class standing by age. If so, a student is on track. Students whose grade level by age was higher than their grade level by credits were considered to be credit deficient. Since credit deficiency was examined on an annual basis, all 9th graders were assumed to be on track. No student beyond 12th grade age was considered to be on track.

Among all dropouts, only 1,617, or about one out of five, were classified as on track. After 9th grade, the number of dropouts who were on track is very small. Less than ten percent of the dropouts in grades 10-12 were on track for a high school diploma when they dropped out. Out of the 667 seniors who finished all four years of high school but did not graduate in June 2001, 273 (41 percent) were within two credits of earning their diploma.

Statewide Assessment Scores of Dropouts

Students who dropped out in 2000-01 demonstrated lower academic achievement, as measured by the Oregon Statewide Assessment. Of the dropouts who were tested as 10th graders within the last four years (1998-2001), only 27 percent met the CIM standard in reading and literature and only 13 percent met the standard in mathematics. The average scale score was 231 in reading and literature and 227 in mathematics. Scores at these levels would be considered to be meeting the standard in reading and literature for 8th grade students, and below 8th grade performance in mathematics. In comparison to all Oregon 10th graders tested in 2001, the average scores for dropouts were at the 24th percentile in reading and literature and the 23rd percentile in mathematics. Although test results from lower grades were not analyzed, it is likely that for most dropouts the same pattern was present earlier in their schooling.

Figure 6—Percent of Students Meeting CIM Performance Standards



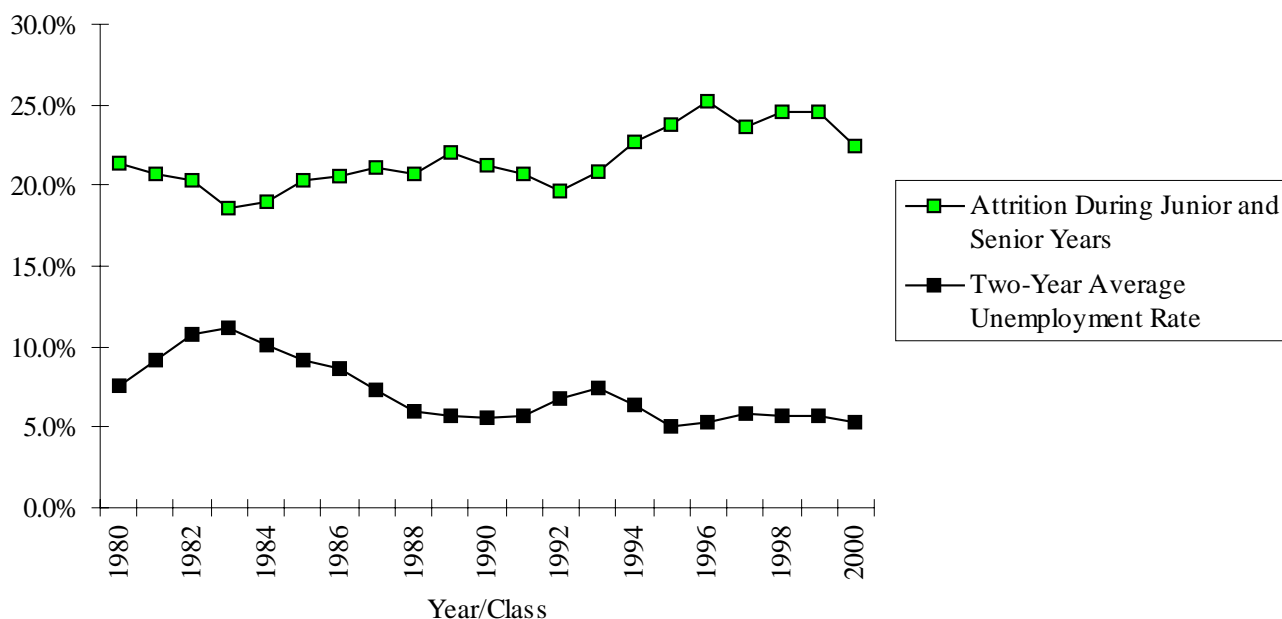
Low academic performance may also contribute to other factors cited by students as reasons for dropping out (e.g., too far behind in credits, could not adjust to the school setting, peer pressure to not achieve, inability to get along with staff). Given the powerful effect of school achievement and related factors on the decision to drop out, one could argue that resources spent on improving student success—well before high school—will pay dividends in a reduced dropout rate.

Employment

Working more than 15 hours a week was the third most frequently cited reason for leaving (table 2, page 13). This suggests that availability of jobs might be a contributing factor in Oregon's dropout rate. The chart below displays the relationship between Oregon's unemployment rate and the percentage of students who withdraw during their junior or senior years.

The withdrawal percentage is the difference between the number of 11th graders on October 1 and the number of graduates of that class two years later, divided by the October 1 count. Oregon unemployment rates are averaged over the corresponding two years.

Figure 7—Relationship Between the Unemployment Rate and Withdrawal During the Junior and Senior Years in Oregon: 1980 to 2000



The chart suggests that in years when the statewide unemployment rate declines, the junior/senior year withdrawal rate increases, and conversely, when unemployment increases, a smaller percentage leave school without graduating. The high percentage of students who are September “no shows” might indicate a connection between employment opportunities and dropping out.

In November 1991 the Oregon Bureau of Labor and Industries issued a Report of the Child Labor Task Force. The report studied the impact of work on students. Students who worked 15 hours or more per week in jobs not connected to their course of study had lower school performance, attendance and completion rates

Why Students Dropped Out

Schools may cite factors that contributed to the student deciding to drop out. From a list of 17 factors, the school can cite as many as apply. Almost one-half of the dropouts, 3,962, cited one factor, and 2,111 dropouts (24 percent) cited more than one.

Students drop out for a variety of reasons, and when surveyed, cite such things as, “Didn’t like school,” “Was failing school,” “Could not keep up with schoolwork,” and “Felt I didn’t belong.” Oregon’s dropout data collection took reasons like these and expanded them to try to find factors that influence a student to dropout of school which can be counteracted by a school offering dropout prevention programs, or by changing the way school and program opportunities are presented to students.

The factors are divided into four categories: personal, family, school, and work. The most frequently cited factors were

- too far behind in credits to catch up,
- lack of parental support for education,

- working more than 15 hours a week,
- a dysfunctional home life,
- substance abuse (table 5)

For 35 percent of all dropouts, at least one of these five factors was cited.

The results by school are shown in table A4. Data for some schools is suppressed to preserve student confidentiality. Data in table A5 show statewide totals by factor by race, sex, and grade.

The comparison of factors by race (table A5) shows that among white student dropouts, the most prevalent factors were too far behind in credits to catch up, lack of parental support for education, dysfunctional home life, and working more than 15 hours a week.

Among Hispanic dropouts, the most prevalent factors were working more than 15 hours a week, lack of parental support for education, too far behind in credits to catch up, and does not speak English well or at all. Other minority groups did not have enough responses to determine which factors were significant.

There were significant differences between males and females in the reasons indicated. Females more frequently reported having frequent health problems, being needed at home to take care of family members, and pregnant or being a student parent. These are all issues related to family matters. The responses for males were higher in different categories, most notably frequent discipline referrals, substance abuse, and too far behind in credits to catch up.

The rank order and magnitude of the factors reported have been relatively stable in the last three years of dropout reporting. This suggests that these are established factors that affect a student's ability to continue to stay in school, and are areas that schools should examine when developing dropout prevention strategies.

Table 2—Factors Influencing the Decision to Drop Out, Grades 9-12: 2000-01

Factor	Responses
Personal	
Substance abuse	537
Student felt peer pressure to not achieve, or to leave school	325
Does not speak English well or at all	160
Health problems caused frequent absences	168
Family	
Lack of parental support for education	1,210
Dysfunctional home life	864
Pregnant or student parent	469
Homeless	171
Needed at home to take care of family members	68
Work	
Working more than 15 hours a week	792
Obligations to support family	124
School	
Too far behind in credits to catch up	1,248
Frequent discipline referrals	503
Could not adjust to the school setting—did not “fit in”	502
Attended three or more high schools	176
Did not get along with one or more staff members	137
Lack of appropriate alternative education opportunities	106
Student felt unsafe at school	13

GED

In 1997, the Oregon Legislature amended the dropout reporting statute to remove students who earn a GED certificate from dropout status. Beginning with the 1996-97 Dropout Report, GED recipients were not counted as dropouts. In the reports from 1991-92 through 1995-96, students who earned a GED certificate were counted as dropouts. For this reason, the 1996-97 report established a new baseline for comparing dropout rates from year to year.

It is not possible to add back in GED recipients to the years prior to 1996-97, or to convert GED recipients to dropouts in 1996-97 and later years to determine a comparable dropout rate sequence. This is because some students might now be encouraged by their school to earn a GED certificate, where they would not have been earlier lest the student be counted as a dropout in this report.

The number of students earning a GED certificate from a school-sponsored setting has been reported for early leavers since 1993-94 (table 6). In the reporting years before 1996-97, receipt of a GED was supplementary data about a dropout and was probably not reported for every dropout who earned one. The higher counts starting in 1996-97 reflect the incentive for districts to report the number of GED recipients more accurately.

Table 3—Number of School-aged Children Earning a GED: 1993-94 to 2000-01

Year	Number
1993-94	298
1994-95	320
1995-96	431
1996-97	1,181
1997-98	1,459
1998-99	1,170
1999-2000	1,417
2000-01	1,706

Alternative High Schools

Several alternative high schools make dropout reports on their own. Only the alternative high schools who grant their own diploma are able to do this. These high schools serve students who are at high risk of dropping out or who may have already dropped out once. Because of this, dropout rates must be interpreted differently for alternative high schools than for regular high schools. Alternative high schools making their own report in 2000-01 are reported separately in the table of dropout rates (Table A1).

Dropout rates for alternative high schools will be necessarily higher than for regular high schools because of the high risk population served in alternative high schools. Making comparisons of the dropout rates regular high schools with the dropout rates of alternative high schools is therefore not recommended. Making comparisons of dropout rates between alternative high schools is also not recommended because on the different focus each school might have. The best way to evaluate the dropout rate of alternative high schools is to monitor the change in the individual school's dropout rate over time.

In table A1, alternative schools have been put into a separate section. In all other appendix tables, they are included with the regular schools.

Alternative high schools normally have a much higher turnover than regular high schools do. To make the dropout rate reflect this condition, the denominator in the rate for alternative high schools is net enrollment over the year, rather than October 1 membership.

Some districts operate alternative programs that do not draw students from their own high school(s). Students who drop out of these programs are called district dropouts, and are added in at the district level, but are not included in the dropout count of any school. The two districts operating such programs in 2000-01 are Salem-Keizer School District 24J (10 district dropouts) and Roseburg School District 4 (56 district dropouts).

Charter Schools

Charter schools operated for a full year for the first time in 2000-01, and are reporting dropout rates for the first time. Since the secondary level charter schools tend to serve at-risk students, these schools are treated in this report as alternative schools, and thus use net enrollment for their dropout rate denominator, and do not have a synthetic four-year rate calculated for them. Since charter schools are considered to be district schools, charter school dropouts are included in the dropout count and rates of the district that sponsor them.

Appendix A

How Dropout Rates are Calculated

One-Year Dropout Rate

The event dropout rate for regular schools, district, counties, and the state is:

$$\frac{\text{Dropouts (July 1 – June 30)}}{\text{Membership (October 1)}} = \text{Dropout rate}$$

For alternative schools and programs, net enrollment is used for the denominator of the dropout rate formula. Net enrollment is taken over the entire school year and is:

$$E1 + E2 + R2 + R3 + R5,$$

Where

E1 = a student enrolling in school for the first time in the United States

E2 = a student enrolling in school for the first time in Oregon

R2 = a student who was previously enrolled in another school in this district

R3 = a student who was previously enrolled in another district

R5 = a student who was previously enrolled in a private school

Synthetic Four-Year Rate

The dropout reporting system collects data on students dropping out in one school year. The data for one year can be displayed as a four-year rate using the following formula.

$$R = 1 - (1 - R_9)(1 - R_{10})(1 - R_{11})(1 - R_{12}), \text{ where}$$

R = overall dropout rate

R_9 = dropout rate for 9th grade

R_{10} = dropout rate for 10th grade

R_{11} = dropout rate for 11th grade

R_{12} = dropout rate for 12th grade

The synthetic four-year rate represents the proportion of the ninth-grade class that would drop out prior to completing their fourth year of high school if the current year's data on four classes of students was really four years of data for one class of students.

A school must offer four grades and have over 30 students in each grade in order to have a synthetic four-year dropout rate calculated for it.

Example: In 2000-01, students dropped out of School A in this manner:

Grade	Students	Dropouts	Dropout Rate
9	118	4	3.4%
10	114	5	4.4%
11	109	7	6.4%
12	98	9	9.2%
Total	439	25	

The one-year event dropout rate is $25 \div 439 = 5.7\%$

The four-year synthetic dropout rate is:

$$R_4 = 1 - (1 - .034)(1 - .044)(1 - .064)(1 - .092)$$

$$R_4 = 1 - (.966)(.956)(.936)(.908)$$

$$R_4 = 1 - .785$$

$$R_4 = .215 \text{ (21.5\%)}$$

Appendix B

Oregon Drop Out Reporting and NCES Standards

Oregon's dropout reporting procedures have several deviations from the standards developed by the National Center for Education Statistics (NCES), which should be noted. Oregon law requires students who earn an adult high school diploma be omitted from dropout counts, while NCES requires that they be counted as dropouts. Also, NCES says that students who earn a GED certificate independently of K-12 sponsorship must be counted as dropouts, whereas Oregon law requires that students earning a GED through any means not be included in dropout counts.

As a result, Oregon's dropout rate calculation yields a lower rate than one calculated using NCES standards. Oregon is able, however, to gather information in its dropout data collection that allows a smooth conversion to the NCES standard. Oregon has thus been certified by NCES as being in full compliance with the NCES dropout reporting standards for uniform and comparable reporting of dropout rates by the states.

A further difference in Oregon's dropout data collection that NCES has not yet addressed, is the level at which the data is collected. Oregon is one of nine states that collects dropout data at the student level. Remaining states collect dropout data at the school level. The experience of Louisiana, whose rate went from 3.5 percent to 11.6 percent when it converted from school level to student level collection, and anecdotal evidence gained with conversations with Oregon school officials, suggests that a student level collection yields a more complete dropout count.

Appendix C

Oregon's Dropout Rates: Event Rates, Status Rates, and Cohort Rates

Three types of dropout rates can be calculated: *event*, *status*, and *cohort* rates. Each rate tells us something different about drop out characteristics.

An ***event rate*** measures the proportion of students who drop out in a single year without graduating from high school. The value of using an event rate is that it measures the extent that educators can keep their students enrolled in school. Oregon law requires calculating only an event rate.

A ***status rate*** measures a group of people in a given age range to see how many are dropouts. This rate shows how many people in that age range might need further training or education. Status rates based on census samples taken in October of every year are published by the national Center For Education Statistics.

A third kind of rate, the ***cohort rate***, starts with a defined set of students, and measures how many of them drop out within a specified time. It shows, for example, among a given group of ninth-graders, how many dropped out over their four-year high school enrollment period.

An event rate measures activity that takes place within a specified time period. A status rate measures the current status of each individual, regardless of when the individual dropped out. A student who drops out in one year will be counted in both the event rate and status rate. If the student remains out of school in the next school year, the student will not be counted again in the event rate, but will still be counted in the status rate.

In addition to the one-year event rate, Oregon calculates a ***synthetic four-year rate*** using the data from the one-year event rate. It is called a synthetic rate because it is a purely mathematical treatment of dropout data and does not compile data collected over a four-year period. See Appendix A for details on how this rate is calculated and how to interpret it.

The synthetic four-year rate is calculated at the school level only for regular high schools. At the district, county, and state levels, only data from regular high schools are used. Because students in alternative high schools are not enrolling for a four-year program, it is not appropriate to include data from alternative schools in a four-year rate calculation.

Event rates and synthetic four-year rates by school, district, and county for grades 9-12 in 2000-01 are displayed in table A1.

The source for all tables and figures in this report is data collected electronically either through the Early Leaver web survey or a data submission using a standard message format text file. The data was verified by schools and districts via the Early Leaver Verification web survey.

Appendix D
[Tables](#) (Click here to link to the MS Excel tables or view them on the following pages.)

Table A1. -- Number of non-dropouts and dropouts; dropout rates, grades 9-12: 2000-01

School or other area	October 1, 2000 Membership	Non-dropout leavers						Dropouts				Dropout rates			
		Total	Sent to child-caring facility ¹	Deceased	Registered home schooler	Received adult high school diploma	Received GED certificate	Total	Withdrew during school year	Finished 12th grade without graduating	Did not return from summer break	1-year		4-year ²	
												2000-01	1999-00	2000-01	1999-00
1	2	3	4	5	6	7	8	9	10	11	12	13.00	14.00	15.00	16.00
Oregon Statewide Totals.....	166,039	2,446	296	64	293	87	1,706	8,713	6,478	667	1,568	5.25	6.30	15.67	18.37
I. Schools															
Adrian High School.....	88	0	0	0	0	0	0	1	1	0	0	1.14	1.98	(3)	(3)
Aloha High School.....	1,683	38	3	0	5	0	30	106	62	15	29	6.30	7.79	19.93	24.17
Alesea School.....	80	3	0	0	2	0	1	3	2	0	1	3.75	3.00	(3)	(3)
Amity High School.....	308	4	0	0	0	0	4	12	12	0	0	3.90	4.33	15.11	17.30
Arlington High School.....	55	0	0	0	0	0	0	0	0	0	0	0.00	0.00	(3)	(3)
Ashland High School.....	1,241	32	0	0	9	0	23	39	34	3	2	3.14	4.15	11.29	15.04
Astoria High School.....	764	0	0	0	0	0	0	21	20	1	0	2.75	1.60	9.39	6.25
Baker High School.....	728	17	3	0	6	4	4	16	7	0	9	2.20	3.94	8.97	10.56
Bandon High School.....	278	0	0	0	0	0	0	4	0	3	1	1.44	1.36	1.54	2.61
Banks High School.....	383	2	0	0	1	0	1	15	8	5	2	3.92	4.66	10.84	17.60
Beaverton High School.....	1,740	48	1	2	5	1	39	96	64	10	22	5.52	7.28	18.62	21.44
Bend High School.....	1,616	21	0	0	3	0	18	71	38	3	30	4.39	9.46	15.94	33.93
Benson High School.....	1,475	10	1	0	1	0	8	34	20	6	8	2.31	2.22	7.37	8.41
Bonanza School.....	194	0	0	0	0	0	0	1	1	0	0	0.52	3.52	(3)	(3)
Brookings Harbor High School.....	587	11	0	0	6	0	5	36	34	0	2	6.13	4.62	22.06	17.50
Burns High School.....	336	0	0	0	0	0	0	11	9	2	0	3.27	7.91	11.55	24.94
Burnt River School.....	31	0	0	0	0	0	0	0	0	0	0	0.00	4.55	(3)	(3)
Butte Falls High School.....	73	1	0	0	0	0	1	4	2	0	2	5.48	1.23	(3)	(3)
Camas Valley School.....	43	0	0	0	0	0	0	1	1	0	0	2.33	1.96	(3)	(3)
Canby High School.....	1,700	6	0	0	0	0	6	45	28	1	16	2.65	2.93	10.16	11.17
Cascade High School.....	686	0	0	0	0	0	0	37	34	0	3	5.39	5.08	19.97	17.73
Cascade Locks School.....	63	0	0	0	0	0	0	2	2	0	0	3.17	7.35	(3)	(3)
Centennial High School.....	1,710	7	0	1	0	0	6	110	74	11	25	6.43	5.30	21.64	17.80
Central High School.....	828	9	2	0	0	0	7	48	37	0	11	5.80	8.36	21.70	29.06
Central Linn High School.....	308	7	0	1	0	0	6	16	14	0	2	5.19	0.78	28.04	3.23
Century High School.....	2,037	1	0	0	0	0	1	65	55	0	10	3.19	3.98	12.73	13.74
Chiloquin High School.....	179	1	0	0	0	0	1	3	3	0	0	1.68	3.97	6.33	(3)
Clackamas High School.....	1,490	30	0	1	3	2	24	50	42	2	6	3.36	4.08	12.46	14.27
Clatskanie High School.....	291	2	0	0	0	0	2	11	9	0	2	3.78	3.36	13.92	11.85
Cleveland High School.....	1,322	13	3	1	0	0	9	89	62	5	22	6.73	5.48	22.45	20.07
Colton High School.....	250	0	0	0	0	0	0	2	2	0	0	0.80	2.99	3.32	11.49
Condon High School.....	70	0	0	0	0	0	0	0	0	0	0	0.00	0.00	(3)	(3)
Coquille High School.....	364	11	0	1	4	0	6	12	10	0	2	3.30	2.26	12.08	8.95

Table A1. -- Number of non-dropouts and dropouts; dropout rates, grades 9-12: 2000-01

School or other area	October 1, 2000 Membership	Non-dropout leavers						Dropouts				Dropout rates			
		Total	Sent to child-caring facility ¹	Deceased	Registered home schooler	Received adult high school diploma	Received GED certificate	Total	Withdrew during school year	Finished 12th grade without graduating	Did not return from summer break	1-year		4-year ²	
												2000-01	1999-00	2000-01	1999-00
1	2	3	4	5	6	7	8	9	10	11	12	13.00	14.00	15.00	16.00
Corbett High School.....	194	0	0	0	0	0	0	2	2	0	0	1.03	1.35	4.08	5.23
Corvallis High School.....	1,255	21	2	0	2	0	17	38	27	0	11	3.03	3.72	11.72	14.21
Cottage Grove High School.....	775	6	1	2	1	0	2	19	14	5	0	2.45	5.58	7.07	17.62
		0													
Cove School.....	79	0	0	0	0	0	0	1	0	0	1	1.27	1.12	(3)	(3)
Crane Union High School.....	78	0	0	0	0	0	0	0	0	0	0	0.00	2.47	(3)	(3)
Crater High School.....	1,574	9	2	1	0	0	6	88	71	5	12	5.59	3.40	19.05	13.08
Crescent Valley High School.....	1,278	2	0	0	0	0	2	17	15	0	2	1.33	2.03	5.24	7.93
Creswell High School.....	384	4	0	0	1	0	3	23	19	0	4	5.99	6.56	21.42	23.00
Crook County High School.....	970	11	1	0	3	0	7	28	14	14	0	2.89	1.32	5.71	5.75
		0													
Crow High School.....	128	0	0	0	0	0	0	0	0	0	0	0.00	2.82	(3)	(3)
Culver High School.....	145	5	1	0	0	0	4	10	8	2	0	6.90	6.29	26.55	22.78
Dallas High School.....	1,079	22	0	0	5	5	12	40	33	0	7	3.71	4.55	14.11	17.31
David Douglas High School.....	2,248	15	2	0	1	0	12	89	63	6	20	3.96	5.17	14.61	19.50
Days Creek School.....	123	0	0	0	0	0	0	2	1	1	0	1.63	2.08	(3)	(3)
Dayton High School.....	304	3	0	0	0	0	3	16	9	1	6	5.26	7.26	17.23	25.95
		0													
Dayville School.....	19	0	0	0	0	0	0	0	0	0	0	0.00	0.00	(3)	(3)
Douglas High School.....	511	13	1	0	0	0	12	42	34	2	6	8.22	5.24	27.60	19.82
Dufur School.....	88	0	0	0	0	0	0	1	1	0	0	1.14	2.30	(3)	(3)
Eagle Point High School.....	1,220	23	0	0	4	0	19	62	54	4	4	5.08	8.90	17.85	28.45
Echo School.....	75	0	0	0	0	0	0	2	2	0	0	2.67	1.28	(3)	(3)
Eddyville School.....	43	0	0	0	0	0	0	2	1	1	0	4.65	4.00	(3)	(3)
		0													
Elgin High School.....	144	0	0	0	0	0	0	2	2	0	0	1.39	1.30	6.25	4.61
Elkton High School.....	82	4	0	1	0	1	2	2	2	0	0	2.44	2.35	(3)	(3)
Elmira High School.....	620	8	2	1	4	0	1	26	20	0	6	4.19	4.07	15.90	15.96
Enterprise High School.....	179	0	0	0	0	0	0	0	0	0	0	0.00	0.00	(3)	(3)
Estacada High School.....	755	2	1	0	0	0	1	30	19	6	5	3.97	2.15	12.48	7.36
Falls City High School.....	64	3	2	0	0	0	1	7	5	0	2	10.94	6.67	(3)	(3)
		0													
Forest Grove High School.....	1,498	13	2	1	0	1	9	87	69	3	15	5.81	9.76	21.67	33.16
Franklin High School.....	1,488	11	3	0	1	0	7	115	60	20	35	7.73	6.90	21.99	25.56
Gaston High School.....	199	4	0	0	0	0	4	3	3	0	0	1.51	1.05	5.11	4.76
Gervais High School.....	318	3	1	1	0	0	1	17	17	0	0	5.35	3.79	20.05	13.42
Gilchrist School.....	127	0	0	0	0	0	0	4	4	0	0	3.15	5.84	(3)	(3)
Gladstone High School.....	901	8	1	0	0	0	7	13	9	2	2	1.44	1.09	4.85	3.62
		0													
Glencoe High School.....	1,746	3	0	0	0	0	3	48	36	0	12	2.75	3.37	10.98	10.41

Table A1. -- Number of non-dropouts and dropouts; dropout rates, grades 9-12: 2000-01

School or other area	October 1, 2000 Membership	Non-dropout leavers						Dropouts				Dropout rates			
		Total	Sent to child-caring facility ¹	Deceased	Registered home schooler	Received adult high school diploma	Received GED certificate	Total	Withdrew during school year	Finished 12th grade without graduating	Did not return from summer break	1-year		4-year ²	
												2000-01	1999-00	2000-01	1999-00
1	2	3	4	5	6	7	8	9	10	11	12	13.00	14.00	15.00	16.00
Glendale High School.....	169	1	0	0	0	0	1	6	5	0	1	3.55	4.82	14.51	17.97
Glide High School.....	352	6	0	0	3	0	3	10	7	0	3	2.84	5.48	10.98	20.31
Gold Beach High School.....	257	3	0	0	2	0	1	6	2	2	2	2.33	8.73	6.13	23.87
Grant High School (Grant).....	305	0	0	0	0	0	0	2	2	0	0	0.66	0.63	2.74	2.86
Grant High School (Multnomah).....	1,794	12	4	0	1	0	7	67	51	7	9	3.73	2.82	12.55	10.93
		0													
Grants Pass High School.....	1,614	11	0	0	0	0	11	89	76	13	0	5.51	7.11	17.37	26.14
Gresham High School.....	1,701	13	0	0	8	0	5	83	46	37	0	4.88	3.53	10.05	12.04
Harper School.....	26	0	0	0	0	0	0	0	0	0	0	0.00	0.00	(3)	(3)
Harrisburg High School.....	217	0	0	0	0	0	0	8	3	0	5	3.69	3.93	13.15	14.49
Helix School.....	50	3	0	0	0	0	3	0	0	0	0	0.00	0.00	(3)	(3)
Henley High School.....	733	6	0	0	2	0	4	16	14	0	2	2.18	1.90	8.70	6.34
		0													
Henry D Sheldon High School.....	1,584	1	1	0	0	0	0	17	17	0	0	1.07	3.03	4.36	7.50
Heppner High School.....	129	1	0	0	0	0	1	0	0	0	0	0.00	1.31	(3)	6.67
Hermiston High School.....	1,175	3	0	0	0	0	3	52	32	0	20	4.43	6.49	16.70	21.59
Hidden Valley High School.....	828	2	0	0	0	0	2	41	32	0	9	4.95	1.95	17.13	8.08
Hillsboro High School.....	1,451	1	0	0	0	0	1	46	35	0	11	3.17	5.88	13.10	17.74
Hood River Valley High School.....	1,059	5	1	1	0	0	3	22	13	0	9	2.08	5.81	7.97	20.93
		0													
Huntington School.....	27	0	0	0	0	0	0	0	0	0	0	0.00	0.00	(3)	(3)
Illinois Valley High School.....	458	48	3	0	4	1	40	14	10	1	3	3.06	5.42	9.52	16.93
Imbler High School.....	120	1	0	0	1	0	0	1	1	0	0	0.83	1.49	(3)	(3)
Ione School.....	65	0	0	0	0	0	0	0	0	0	0	0.00	0.00	(3)	(3)
Jefferson High School (Marion).....	285	3	1	0	0	0	2	12	10	1	1	4.21	4.51	15.66	16.29
Jefferson High School (Multnomah).....	892	6	2	2	0	0	2	66	37	9	20	7.40	6.53	24.33	25.87
		0													
Jewell School.....	41	1	0	0	0	0	1	2	2	0	0	4.88	11.36	(3)	(3)
John C. Fremont Jr High School.....	280	3	0	0	3	0	0	2	2	0	0	0.71	0.72	(4)	(4)
John F Kennedy High School.....	222	0	0	0	0	0	0	3	2	0	1	1.35	5.33	5.26	20.21
Jordan Valley High School.....	39	0	0	0	0	0	0	0	0	0	0	0.00	2.17	(3)	(3)
Joseph High School	124	3	0	0	1	1	1	1	1	0	0	0.81	0.00	(3)	(3)
Joseph Lane Jr High School.....	266	0	0	0	0	0	0	5	5	0	0	1.88	3.05	(4)	(4)
Junction City High School.....	707	0	0	0	0	0	0	10	10	0	0	1.41	3.07	5.89	11.62
		0													
Klamath High School.....	1,051	1	0	0	0	0	1	47	47	0	0	4.47	11.12	16.13	38.03
Knappa High School.....	194	0	0	0	0	0	0	3	3	0	0	1.55	0.55	6.00	2.22
La Grande High School.....	827	17	1	0	6	0	10	42	34	3	5	5.08	4.30	17.27	13.66
Lake Oswego High School.....	1,188	2	0	0	0	0	2	45	12	7	26	3.79	1.26	12.44	5.05
Lakeridge High School.....	1,131	8	0	0	0	0	8	10	8	2	0	0.88	1.66	2.81	4.64

Table A1. -- Number of non-dropouts and dropouts; dropout rates, grades 9-12: 2000-01

School or other area	October 1, 2000 Membership	Non-dropout leavers						Dropouts				Dropout rates			
		Total	Sent to child-caring facility ¹	Deceased	Registered home schooler	Received adult high school diploma	Received GED certificate	Total	Withdrew during school year	Finished 12th grade without graduating	Did not return from summer break	1-year		4-year ²	
												2000-01	1999-00	2000-01	1999-00
1	2	3	4	5	6	7	8	9	10	11	12	13.00	14.00	15.00	16.00
Lakeview High School.....	355	1	0	0	0	0	1	2	2	0	0	0.56	1.09	2.60	4.80
Lapine High School.....	467	12	1	0	5	2	4	17	17	0	0	3.64	9.43	13.14	31.60
Lebanon High School.....	1,379	26	8	0	0	4	14	82	69	0	13	5.95	8.92	22.09	28.93
Lincoln High School.....	1,374	11	2	0	0	0	9	47	19	5	23	3.42	4.22	11.83	15.91
Long Creek School.....	33	0	0	0	0	0	0	0	0	0	0	0.00	5.71	(3)	(3)
Lost River High School.....	192	2	0	2	0	0	0	13	9	0	4	6.77	5.20	24.73	13.46
Lowell High School.....	141	2	1	0	0	0	1	10	4	0	6	7.09	7.97	(3)	(3)
Madison High School.....	1,241	4	0	0	1	0	3	62	48	1	13	5.00	4.21	17.52	15.26
Madras High School.....	800	3	0	0	0	0	3	44	43	1	0	5.50	6.59	19.48	20.03
Mapleton High School.....	91	0	0	0	0	0	0	7	6	0	1	7.69	8.16	(3)	(3)
Marshall High School (Multnomah)...	1,278	45	8	0	4	7	26	98	78	0	20	7.67	11.71	26.29	39.34
Marshfield High School.....	1,207	16	4	0	9	0	3	40	25	7	8	3.31	5.21	10.31	17.47
Mazama High School.....	821	0	0	0	0	0	0	33	21	7	5	4.02	2.60	12.80	10.36
McKay High School.....	1,919	31	0	2	3	0	26	167	134	16	17	8.70	10.64	28.80	34.86
McNary High School.....	1,826	38	0	0	5	0	33	95	58	19	18	5.20	8.77	16.14	26.83
McKenzie River High School.....	104	1	0	0	0	1	0	8	7	0	1	7.69	1.94	(3)	(3)
McLoughlin High School.....	514	10	1	0	0	0	9	38	22	0	16	7.39	13.01	26.37	39.79
McMinnville High School.....	1,690	4	0	0	2	0	2	111	69	0	42	6.57	8.17	24.23	26.93
Metropolitan Learning Center.....	133	5	0	0	0	0	5	3	2	1	0	2.26	3.01	(3)	(3)
Milwaukie High School.....	1,391	21	0	0	0	0	21	94	70	8	16	6.76	6.84	23.30	24.84
Mitchell School.....	36	0	0	0	0	0	0	1	0	0	1	2.78	0.00	(3)	(3)
Mohawk High School.....	107	1	0	0	0	0	1	3	3	0	0	2.80	2.17	(3)	(3)
Molalla High School.....	775	5	0	0	2	0	3	27	15	7	5	3.48	3.74	11.00	12.31
Monroe High School.....	155	5	0	1	1	2	1	1	1	0	0	0.65	4.12	2.78	16.09
Monument School.....	20	0	0	0	0	0	0	0	0	0	0	0.00	0.00	(3)	(3)
Mt View High School.....	1,938	9	1	0	1	0	7	31	28	2	1	1.60	2.30	5.94	8.26
Myrtle Point High School.....	314	4	0	0	2	0	2	9	9	0	0	2.87	4.40	10.74	11.64
Neah-Kah-Nie Jr-Sr High School.....	286	8	0	0	4	0	4	4	3	1	0	1.40	5.67	4.21	20.21
Nestucca High School.....	247	4	0	1	2	0	1	2	1	0	1	0.81	1.64	3.77	4.99
Newberg High School.....	1,551	15	7	0	4	0	4	101	80	6	15	6.51	7.15	21.56	24.64
Newport High School.....	694	13	3	1	0	0	9	43	30	0	13	6.20	8.70	24.23	30.76
North Bend High School.....	873	9	0	0	2	0	7	25	19	4	2	2.86	6.00	9.74	22.38
North Douglas High School.....	148	5	1	0	2	1	1	3	3	0	0	2.03	8.28	7.73	(3)
North Eugene High School.....	1,077	7	1	0	2	0	4	29	19	3	7	2.69	3.65	9.27	13.65

Table A1. -- Number of non-dropouts and dropouts; dropout rates, grades 9-12: 2000-01

School or other area	October 1, 2000 Membership	Non-dropout leavers						Dropouts				Dropout rates			
		Total	Sent to child-caring facility ¹	Deceased	Registered home schooler	Received adult high school diploma	Received GED certificate	Total	Withdrawn during school year	Finished 12th grade without graduating	Did not return from summer break	1-year		4-year ²	
												2000-01	1999-00	2000-01	1999-00
1	2	3	4	5	6	7	8	9	10	11	12	13.00	14.00	15.00	16.00
North Lake School.....	74	0	0	0	0	0	0	0	0	0	0	0.00	0.00	(3)	(3)
North Marion High School.....	514	6	0	0	2	0	4	5	5	0	0	0.97	2.40	3.97	9.78
North Medford High School.....	1,973	63	4	0	8	3	48	139	98	31	10	7.05	8.33	20.84	28.94
North Powder School.....	94	0	0	0	0	0	0	0	0	0	0	0.00	0.00	(3)	(3)
North Salem High School.....	1,910	37	1	2	4	0	30	187	146	17	24	9.79	10.54	32.18	33.63
North Valley High School.....	727	6	0	1	0	0	5	39	28	2	9	5.36	4.28	17.05	13.81
Nyssa High School.....	320	1	0	0	0	0	1	9	7	0	2	2.81	2.88	9.95	9.67
Oakland High School.....	226	3	1	2	0	0	0	9	9	0	0	3.98	1.81	14.95	5.87
Oakridge High School.....	295	7	1	4	2	0	0	12	8	0	4	4.07	4.47	15.43	15.72
Ontario High School.....	778	5	0	0	0	0	5	29	17	12	0	3.73	4.00	8.38	15.00
Oregon City High School.....	1,953	2	0	1	0	0	1	32	24	6	2	1.64	4.22	5.35	(4)
Pacific High School.....	149	2	0	0	0	0	2	3	3	0	0	2.01	3.90	7.09	14.91
Paisley School.....	46	0	0	0	0	0	0	0	0	0	0	0.00	0.00	(3)	(3)
Parkrose High School.....	1,103	13	2	0	3	0	8	62	48	9	5	5.62	5.33	15.02	14.91
Pendleton High School.....	1,090	92	67	2	0	7	16	61	39	0	22	5.60	5.54	20.86	18.91
Perrydale School.....	110	1	1	0	0	0	0	2	2	0	0	1.82	0.00	(3)	(3)
Philomath High School.....	652	10	0	1	0	2	7	22	17	0	5	3.37	3.86	13.12	15.16
Phoenix High School.....	808	10	7	0	0	1	2	84	81	2	1	10.40	9.18	33.24	28.50
Pilot Rock High School.....	165	0	0	0	0	0	0	3	0	3	0	1.82	3.91	0.00	14.77
Pine Eagle High School.....	135	0	0	0	0	0	0	3	3	0	0	2.22	2.16	9.67	5.23
Pleasant Hill High School.....	461	0	0	0	0	0	0	1	1	0	0	0.22	1.10	0.81	3.78
Powers High School.....	74	3	0	0	1	0	2	0	0	0	0	0.00	0.00	(3)	(3)
Prairie City School.....	63	0	0	0	0	0	0	0	0	0	0	0.00	4.62	(3)	(3)
Prospect High School.....	79	2	0	0	1	0	1	5	4	1	0	6.33	7.14	(3)	(3)
Rainier High School.....	487	2	0	2	0	0	0	11	10	1	0	2.26	4.95	8.02	18.30
Redmond High School.....	1,597	26	4	0	8	0	14	39	26	11	2	2.44	3.78	7.30	12.78
Reedsport High School.....	274	1	0	0	0	0	1	18	15	1	2	6.57	2.76	25.62	10.92
Rex Putnam High School.....	1,366	10	0	0	3	0	7	41	34	5	2	3.00	4.32	10.56	13.39
Reynolds High School.....	2,311	2	0	0	0	0	2	102	63	1	38	4.41	5.42	14.86	19.20
Riddle High School.....	158	0	0	0	0	0	0	5	4	1	0	3.16	5.06	9.00	(3)
Riverdale High School.....	105	0	0	0	0	0	0	1	1	0	0	0.95	0.00	(3)	(3)
Riverside High School.....	455	0	0	0	0	0	0	18	9	3	6	3.96	5.33	12.10	18.20
Rogue River High School.....	425	5	1	0	0	0	4	21	20	0	1	4.94	2.09	19.67	7.04
Roosevelt High School.....	1,131	12	5	0	0	0	7	107	82	7	18	9.46	8.05	29.68	29.80

Table A1. -- Number of non-dropouts and dropouts; dropout rates, grades 9-12: 2000-01

School or other area	October 1, 2000 Membership	Non-dropout leavers						Dropouts				Dropout rates			
		Total	Sent to child-caring facility ¹	Deceased	Registered home schooler	Received adult high school diploma	Received GED certificate	Total	Withdrew during school year	Finished 12th grade without graduating	Did not return from summer break	1-year		4-year ²	
												2000-01	1999-00	2000-01	1999-00
1	2	3	4	5	6	7	8	9	10	11	12	13.00	14.00	15.00	16.00
Roseburg High School.....	1,469	12	3	0	1	2	6	63	39	6	18	4.29	3.01	(4)	(4)
Sam Barlow High School.....	1,855	24	2	0	2	0	20	74	41	0	33	3.99	3.95	15.69	15.18
Sandy High School.....	1,393	11	2	0	2	0	7	30	24	1	5	2.15	3.35	7.85	10.91
Santiam High School.....	225	13	0	0	6	1	6	21	18	0	3	9.33	2.95	33.81	12.17
Scappoose High School.....	710	15	3	0	6	0	6	17	11	0	6	2.39	3.51	9.07	13.41
		0													
School Of Arts & Communication.....	208	2	0	0	0	0	2	6	6	0	0	2.88	2.58	9.84	(3)
School Of Science & Technology.....	151	0	0	0	0	0	0	2	2	0	0	1.32	1.53	5.13	(3)
Scio High School.....	230	4	1	0	0	0	3	1	1	0	0	0.43	2.49	1.72	10.52
Seaside High School.....	566	4	0	0	1	0	3	24	24	0	0	4.24	5.72	15.73	16.25
Sheridan High School.....	220	1	0	0	1	0	0	6	3	1	2	2.73	5.86	8.56	18.62
Sherman High School.....	138	0	0	0	0	0	0	0	0	0	0	0.00	0.00	(3)	(3)
		0													
Sherwood High School.....	699	0	0	0	0	0	0	28	21	7	0	4.01	1.69	11.69	6.41
Silverton High School.....	1,195	17	0	2	2	4	9	77	62	5	10	6.44	6.98	21.01	22.35
Sisters High School.....	449	9	2	0	2	1	4	6	4	0	2	1.34	4.10	3.53	7.78
Siuslaw High School.....	533	26	2	2	2	0	20	26	17	5	4	4.88	7.68	15.15	27.19
South Albany High School.....	1,183	43	6	1	0	0	36	99	90	0	9	8.37	6.42	29.81	23.89
South Eugene High School.....	1,727	4	0	0	0	0	4	35	30	0	5	2.03	2.20	7.74	8.53
		0													
South Medford High School.....	1,871	56	8	0	4	0	44	175	127	24	24	9.35	10.57	29.79	33.92
South Salem High School.....	2,021	44	1	1	3	0	39	107	76	15	16	5.29	9.34	17.73	28.09
South Umpqua High School.....	554	32	4	3	3	1	21	43	33	3	7	7.76	11.68	20.24	30.24
Southridge High School	1,708	23	3	0	7	0	13	58	45	0	13	3.40	3.03	13.95	(4)
Sprague High School.....	2,031	39	0	2	5	0	32	89	64	17	8	4.38	6.31	13.87	18.17
Spray School.....	42	0	0	0	0	0	0	0	0	0	0	0.00	0.00	(3)	(3)
		0													
Springfield High School.....	1,473	10	5	0	3	0	2	78	51	15	12	5.30	5.93	16.44	19.57
St Helens High School.....	984	13	2	0	2	0	9	43	33	10	0	4.37	6.30	13.49	20.77
St Paul High School.....	88	0	0	0	0	0	0	3	2	0	1	3.41	2.86	(3)	(3)
Stanfield Secondary School.....	141	0	0	0	0	0	0	1	0	1	0	0.71	1.91	(3)	(3)
Stayton High School.....	750	18	0	3	0	0	15	67	59	1	7	8.93	4.86	30.58	15.63
Sunset High School.....	1,760	34	4	0	2	0	28	100	71	7	22	5.68	8.14	19.20	26.10
		0													
Sutherlin High School.....	429	9	2	0	0	0	7	16	14	0	2	3.73	8.42	14.47	30.52
Sweet Home High School.....	803	13	0	0	6	0	7	49	36	0	13	6.10	6.49	22.46	23.44
Taft High School.....	608	3	1	0	0	0	2	66	54	0	12	10.86	10.41	38.37	35.60
The Dalles High School.....	696	6	1	0	0	0	5	47	40	1	6	6.75	7.00	22.63	21.62
Thurston High School.....	1,503	11	1	1	1	0	8	72	24	13	35	4.79	4.30	14.83	13.41
Tigard High School.....	1,920	27	0	1	0	0	26	59	54	0	5	3.07	4.89	11.69	18.15

Table A1. -- Number of non-dropouts and dropouts; dropout rates, grades 9-12: 2000-01

School or other area	October 1, 2000 Membership	Non-dropout leavers						Dropouts				Dropout rates			
		Total	Sent to child-caring facility ¹	Deceased	Registered home schooler	Received adult high school diploma	Received GED certificate	Total	Withdrew during school year	Finished 12th grade without graduating	Did not return from summer break	1-year		4-year ²	
												2000-01	1999-00	2000-01	1999-00
1	2	3	4	5	6	7	8	9	10	11	12	13.00	14.00	15.00	16.00
Tillamook High School.....	772	0	1	1	3	0	15	43	21	1	21	5.57	3.65	19.94	13.31
Toledo High School.....	461	2	1	0	0	0	1	26	17	0	9	5.64	7.10	18.84	19.60
Triangle Lake School.....	51	0	0	0	0	0	0	0	0	0	0	0.00	0.00	(3)	(3)
Tualatin High School.....	1,596	24	0	0	2	1	21	75	66	0	9	4.70	4.43	16.90	16.77
Ukiah High School.....	31	0	0	0	0	0	0	3	2	1	0	9.68	0.00	(3)	(3)
Umatilla High School.....	299	6	0	0	0	0	6	20	9	2	9	6.69	15.64	23.52	47.34
Union High School.....	150	0	0	0	0	0	0	0	0	0	0	0.00	0.63	(3)	2.56
Vale High School.....	355	1	0	0	0	0	1	10	9	1	0	2.82	2.01	9.76	3.54
Vernonia High School.....	254	2	1	0	0	1	0	14	13	1	0	5.51	3.83	20.28	16.25
Wahtonka High School.....	340	6	0	0	0	0	6	28	22	3	3	8.24	8.06	26.07	20.97
Waldport High School.....	298	8	1	0	0	0	7	14	14	0	0	4.70	8.56	17.78	26.39
Wallowa High School.....	116	0	0	0	0	0	0	0	0	0	0	0.00	0.00	(3)	(3)
Warrenton High School.....	283	21	3	1	4	0	13	16	9	0	7	5.65	7.38	20.84	26.37
Wasco County High School.....	117	0	0	0	0	0	0	5	3	0	2	4.27	2.78	(3)	(3)
West Albany High School.....	1,299	33	7	0	0	1	25	54	48	0	6	4.16	5.59	16.16	19.11
West Linn High School.....	1,437	10	0	0	1	1	8	29	13	10	6	2.02	1.31	5.40	3.68
Weston - McEwen High School.....	204	2	0	0	0	0	2	8	5	3	0	3.92	0.98	9.59	3.66
Westview High School.....	2,270	56	6	0	3	5	42	98	55	10	33	4.32	5.98	14.10	20.35
Wheeler High School.....	37	0	0	0	0	0	0	0	0	0	0	0.00	3.23	(3)	(3)
Willamette High School.....	1,437	19	3	0	6	0	10	89	72	8	9	6.19	9.91	20.16	30.05
Willamina High School.....	291	16	2	0	14	0	0	13	9	2	2	4.47	6.03	13.91	19.26
Wilson High School.....	1,614	4	0	0	0	0	4	59	33	4	22	3.66	2.47	12.92	9.34
Wilsonville High School.....	834	21	1	0	1	1	18	23	22	0	1	2.76	4.30	10.29	13.87
Winston Churchill High School.....	1,324	11	2	0	5	0	4	15	15	0	0	1.13	1.98	4.36	6.11
Woodburn High School.....	1,071	2	0	1	0	0	1	104	87	0	17	9.71	9.68	31.61	33.08
Yamhill-Carlton High School.....	464	10	0	0	5	0	5	19	17	0	2	4.09	5.13	15.39	19.51
Yoncalla High School.....	133	3	0	0	3	0	0	4	4	0	0	3.01	4.48	(3)	(3)
II. Alternative Schools *		0													
Brown Education Center	184	0	0	0	0	0	0	17	17	0	0	9.24	(6)	(5)	(6)
Centennial Learning Center.....	176	4	0	0	0	0	4	44	37	0	7	25.00	33.67	(5)	(5)
Churchill Alternative Education	223	2	2	0	0	0	0	20	17	0	3	8.97	6.72	(5)	(5)
Community School.....	412	18	0	0	2	0	16	84	67	3	14	20.39	19.31	(5)	(5)
Fariss Street School	53	0	0	0	0	0	0	5	5	0	0	9.43	12.73	(5)	(5)
Gateways Learning Center	164	0	0	0	0	0	0	4	4	0	0	2.44	20.60	(5)	(5)

Table A1. -- Number of non-dropouts and dropouts; dropout rates, grades 9-12: 2000-01

School or other area	October 1, 2000 Membership	Non-dropout leavers						Dropouts				Dropout rates			
		Total	Sent to child-caring facility ¹	Deceased	Registered home schooler	Received adult high school diploma	Received GED certificate	Total	Withdrew during school year	Finished 12th grade without graduating	Did not return from summer break	1-year		4-year ²	
												2000-01	1999-00	2000-01	1999-00
1	2	3	4	5	6	7	8	9	10	11	12	13.00	14.00	15.00	16.00
Helensview High School.....	166	1	0	0	0	0	1	23	21	0	2	13.86	9.35	(5)	(5)
Marshall High School (Deschutes)...	255	26	8	0	0	0	18	90	90	0	0	35.29	33.33	(5)	(5)
Opportunity Center.....	275	9	1	0	1	0	7	50	50	0	0	18.18	18.06	(5)	(5)
Opportunity House	59	2	0	2	0	0	0	18	14	0	4	30.51	0.00	(5)	(5)
PPS Alternative Programs.....	2,438	232	23	2	0	5	202	929	687	47	195	38.11	42.73	(5)	(5)
Roberts HSC/TPP	189	4	0	0	0	0	4	54	52	0	2	28.27	8.28	(5)	(5)
South Lane Academy.....	119	2	0	0	0	0	2	22	16	3	3	18.49	27.36	(5)	(5)
III. Charter Schools *															
21st Century Academy	90	0	0	0	0	0	0	6	6	0	0	6.67	(6)	(3)	(6)
Armadillo Technical Academy	46	1	0	0	1	0	0	5	5	0	0	10.87	(6)	(3)	(6)
Destinations Charter School	101	6	1	0	0	0	5	17	17	0	0	16.83	(6)	(3)	(6)
Lincoln City Career Technical High	47	1	0	0	0	0	1	10	10	0	0	21.28	(6)	(3)	(6)
Mc Coy Public Charter School	96	2	0	0	0	0	2	20	17	2	1	20.83	(6)	(3)	(6)
Molalla Alternative Options	116	1	0	0	0	0	1	31	18	12	1	26.72	(6)	(3)	(6)
Pioneer Youth Corps Academy	71	1	0	0	0	0	1	2	2	0	0	2.82	(6)	(3)	(6)
Willamette Valley Community School	27	1	0	1	0	0	0	0	0	0	0	0.00	(6)	(3)	(6)
IV. School Districts															
Beaverton SD 48J.....	9,825	219	17	2	24	6	170	550	372	45	133	5.60	7.08	16.73	20.76
Bend SD1.....	4,196	68	10	0	9	2	47	209	173	5	31	4.98	7.55	10.86	22.01
Coos Bay SD 9	1,284	22	5	0	9	0	8	57	42	7	8	4.44	5.21	14.63	17.47
Corvallis SD 509J.....	2,558	24	2	1	2	0	19	55	42	0	13	2.15	2.86	8.35	10.95
Eugene SD 4J.....	6,045	35	7	0	8	0	20	168	150	3	15	2.78	3.70	6.40	8.74
Greater Albany SD 8J.....	2,482	76	13	1	0	1	61	153	138	0	15	6.16	6.11	22.95	21.48
Gresham-Barlow SD 10J.....	3,587	37	2	0	10	0	25	162	92	37	33	4.52	3.91	12.95	13.73
Hillsboro SD 1J.....	5,234	5	0	0	0	0	5	159	126	0	33	3.04	4.31	12.25	13.84
Hood River SD 1.....	1,122	5	1	1	0	0	3	24	15	0	9	2.14	5.90	8.27	21.28
Klamath County SD.....	1,425	9	0	2	2	0	5	37	31	0	6	2.60	3.27	10.10	10.37
Klamath Falls City Schools.....	1,872	1	0	0	0	0	1	80	68	7	5	4.27	7.42	14.63	26.65
Lake Oswego SD 7J.....	2,319	10	0	0	0	0	10	55	20	9	26	2.37	1.46	7.82	4.87
Lincoln County SD.....	2,146	27	6	1	0	0	20	162	126	1	35	7.55	8.73	27.04	28.92
Medford SD 549.....	3,844	119	12	0	12	3	92	314	225	55	34	8.17	9.40	25.23	31.36
Molalla SD 35.....	859	6	0	0	2	0	4	58	33	19	6	6.75	5.07	19.42	12.31
Morrow SD 1.....	649	1	0	0	0	0	1	18	9	3	6	2.77	3.91	8.92	13.50
North Clackamas SD 12.....	4,247	61	0	1	6	2	52	185	146	15	24	4.36	5.07	15.51	17.63

Table A1. -- Number of non-dropouts and dropouts; dropout rates, grades 9-12: 2000-01

School or other area	October 1, 2000 Membership	Non-dropout leavers						Dropouts				Dropout rates			
		Total	Sent to child-caring facility ¹	Deceased	Registered home schooler	Received adult high school diploma	Received GED certificate	Total	Withdrew during school year	Finished 12th grade without graduating	Did not return from summer break	1-year		4-year ²	
												2000-01	1999-00	2000-01	1999-00
1	2	3	4	5	6	7	8	9	10	11	12	13.00	14.00	15.00	16.00
Phoenix-Talent SD 4	827	11	7	0	1	1	2	89	86	2	1	10.76	9.18	33.69	28.50
Portland SD 1J.....	15,260	367	51	5	8	12	291	1,696	1,196	114	386	11.11	12.82	18.59	19.27
Roseburg SD 4.....	2,436	77	3	1	4	19	50	126	89	6	31	5.17	6.59	10.72	10.36
Salem/Keizer SD 24J.....	9,932	198	2	7	20	0	169	709	540	84	85	7.14	9.58	24.02	28.24
Sheridan SD 48J.....	296	3	0	2	1	0	0	24	17	1	6	8.11	10.39	31.60	18.62
Springfield SD19.....	3,075	21	6	1	4	0	10	154	79	28	47	5.01	6.87	15.67	16.56
Three Rivers SD.....	2,013	56	3	1	4	1	47	94	70	3	21	4.67	3.59	15.32	11.96
Tigard SD 23J.....	3,516	51	0	1	2	1	47	134	120	0	14	3.81	4.68	14.06	17.49
West Linn SD 3J.....	2,271	31	1	0	2	2	26	52	35	10	7	2.29	2.37	7.25	7.40
V. Counties															
Baker County.....	921	17	3	0	6	4	4	19	10	0	9	2.06	3.57	8.36	9.81
Benton County.....	3,445	42	2	3	5	4	28	81	62	0	19	2.35	3.12	9.19	12.03
Clackamas County.....	16,648	137	5	2	12	4	114	502	340	69	93	3.02	3.25	10.20	10.90
Clatsop County.....	1,848	26	3	1	5	0	17	66	58	1	7	3.57	3.91	12.94	12.72
Columbia County.....	2,726	34	6	2	8	1	17	96	76	12	8	3.52	4.77	12.00	16.86
Coos County.....	3,187	49	5	1	18	0	25	107	80	14	13	3.36	4.53	11.08	15.80
Crook County.....	970	11	1	0	3	0	7	28	14	14	0	2.89	1.32	5.71	5.75
Curry County.....	993	16	0	0	8	0	8	45	39	2	4	4.53	5.60	16.18	18.74
Deschutes County.....	6,315	103	16	0	19	3	65	271	220	16	35	4.29	6.29	9.40	18.54
Douglas County.....	5,638	154	12	7	15	22	98	287	221	14	52	5.09	6.39	14.54	16.60
Gilliam County.....	125	0	0	0	0	0	0	0	0	0	0	0.00	0.00	0.00	0.00
Grant County.....	440	0	0	0	0	0	0	2	2	0	0	0.45	1.51	1.90	6.19
Harney County.....	414	0	0	0	0	0	0	11	9	2	0	2.66	6.90	9.19	22.22
Hood River County.....	1,122	5	1	1	0	0	3	24	15	0	9	2.14	5.90	8.27	21.28
Jackson County.....	9,283	202	22	1	27	4	148	622	496	70	56	6.70	7.22	21.98	24.52
Jefferson County.....	945	8	1	0	0	0	7	54	51	3	0	5.71	6.54	19.81	20.54
Josephine County.....	3,627	67	3	1	4	1	58	183	146	16	21	5.05	5.14	16.24	18.39
Klamath County.....	3,297	10	0	2	2	0	6	117	99	7	11	3.55	5.68	12.69	20.04
Lake County.....	475	1	0	0	0	0	1	2	2	0	0	0.42	0.80	1.93	3.39
Lane County.....	15,023	132	23	10	28	1	70	578	426	52	100	3.85	5.36	11.23	15.03
Lincoln County.....	2,146	27	6	1	0	0	20	162	126	1	35	7.55	8.73	27.04	28.92
Linn County.....	5,644	139	22	2	12	6	97	330	279	0	51	5.85	6.26	22.10	21.78

Table A1. -- Number of non-dropouts and dropouts; dropout rates, grades 9-12: 2000-01

School or other area	October 1, 2000 Membership	Non-dropout leavers						Dropouts				Dropout rates			
		Total	Sent to child-caring facility ¹	Deceased	Registered home schooler	Received adult high school diploma	Received GED certificate	Total	Withdrew during school year	Finished 12th grade without graduating	Did not return from summer break	1-year		4-year ²	
												2000-01	1999-00	2000-01	1999-00
1	2	3	4	5	6	7	8	9	10	11	12	13.00	14.00	15.00	16.00
Malheur County.....	1,606	7	0	0	0	0	7	49	34	13	2	3.05	3.12	8.56	10.76
Marion County.....	15,061	247	4	14	24	4	201	1,035	819	91	125	6.87	8.35	23.27	25.69
Morrow County.....	649	1	0	0	0	0	1	18	9	3	6	2.77	3.91	8.92	13.50
Multnomah County.....	26,776	446	57	6	22	12	349	2,291	1,597	178	516	8.56	9.53	17.12	18.26
Polk County.....	2,081	35	5	0	5	5	20	97	77	0	20	4.66	5.90	17.77	21.47
Sherman County.....	138	0	0	0	0	0	0	0	0	0	0	0.00	0.00	0.00	0.00
Tillamook County.....	1,305	32	1	2	9	0	20	49	25	2	22	3.75	3.71	13.79	13.42
Umatilla County.....	3,744	116	68	2	0	7	39	188	111	10	67	5.02	6.98	17.82	23.43
Union County.....	1,414	18	1	0	7	0	10	46	37	3	6	3.25	3.91	11.34	9.55
Wallowa County.....	419	3	0	0	1	1	1	1	1	0	0	0.24	0.00	0.96	0.00
Wasco County.....	1,241	12	1	0	0	0	11	81	66	4	11	6.53	6.62	21.63	20.00
Washington County.....	21,354	294	19	4	27	8	236	976	719	60	197	4.57	5.86	15.27	18.90
Wheeler County.....	115	0	0	0	0	0	0	1	0	0	1	0.87	0.93	3.85	3.57
Yamhill County.....	4,904	55	9	2	26	0	18	296	213	10	73	6.04	7.29	21.46	23.84

* Alternative schools and charter schools use net enrollment as a denominator.

(1) Mental health program, juvenile detention facility, substance abuse program, or certified shelter care program.

(2) Synthetic rate based on one year of data. Four-year rates for districts, counties, and the state uses data from regular high schools only.

(3) School had too few students to calculate a four-year rate.

(4) School does not offer four grades.

(5) School is not designed for four years of attendance

SOURCE: Oregon Department of Education, Office of Student Services, Individual Early Leaver Report; School Finance and Data Analysis, Student Membership report and Quarterly ADM report.

Table A2. -- Dropouts by sex, race/ethnicity, and grade, grades9-12: 2000-01

School or other area	Dropouts	Sex		Race/ethnicity						Grade					
		Male	Female	White ¹	Black ¹	Hispanic	Asian / Pacific Islander	American Indian / Alaskan Native	No response	9	10	11	12	13	No Response
1	2	3	4	5	6	7	8	9	10	11	12	13	14	15	16
Oregon Statewide Totals.....	8,713	4,760	3,953	6,099	452	1,486	294	268	114	1,393	1,930	2,253	2,255	862	20
I. Schools															
Adrian High School.....	1	*	*	*	*	*	*	*	*	*	*	*	*	*	*
Aloha High School.....	106	66	40	69	7	16	8	3	3	6	17	25	41	17	0
Alsea School.....	3	*	*	*	*	*	*	*	*	*	*	*	*	*	*
Amity High School.....	12	8	4	10	0	2	0	0	0	2	5	1	4	0	0
Arlington High School.....	0	0	0	0	0	0	0	0	0	0	0	0	0	0	0
Ashland High School.....	39	30	9	34	2	1	0	2	0	4	5	11	16	3	0
Astoria High School.....	21	14	7	14	0	6	1	0	0	3	2	6	7	3	0
Baker High School.....	16	8	8	15	0	1	0	0	0	2	1	1	12	0	0
Bandon High School.....	4	*	*	*	*	*	*	*	*	*	*	*	*	*	*
Banks High School.....	15	13	2	13	0	2	0	0	0	2	0	2	6	5	0
Beaverton High School.....	96	58	38	52	1	33	3	4	3	15	11	38	21	11	0
Bend High School.....	71	29	42	68	0	2	1	0	0	14	15	24	15	3	0
Benson High School.....	34	24	10	25	5	1	3	0	0	3	6	3	15	7	0
Bonanza School.....	1	*	*	*	*	*	*	*	*	*	*	*	*	*	*
Brookings Harbor High School.....	36	19	17	30	0	4	1	1	0	11	1	8	15	1	0
Burns High School.....	11	7	4	10	0	1	0	0	0	1	0	6	2	2	0
Burnt River School.....	0	0	0	0	0	0	0	0	0	0	0	0	0	0	0
Butte Falls High School.....	4	*	*	*	*	*	*	*	*	*	*	*	*	*	*
Camas Valley School.....	1	*	*	*	*	*	*	*	*	*	*	*	*	*	*
Canby High School.....	45	18	27	29	0	16	0	0	0	2	14	16	12	1	0
Cascade High School.....	37	20	17	*	*	*	*	*	*	8	6	10	12	1	0
Cascade Locks School.....	2	*	*	*	*	*	*	*	*	*	*	*	*	*	*
Centennial High School.....	110	59	51	82	0	18	10	0	0	21	23	21	33	11	1
Central High School.....	48	23	25	27	0	16	0	2	3	5	1	21	21	0	0
Central Linn High School.....	16	12	4	15	0	0	0	0	1	3	2	3	8	0	0
Century High School.....	65	39	26	30	0	33	2	0	0	13	18	14	20	0	0
Chiloquin High School.....	3	*	*	*	*	*	*	*	*	*	*	*	*	*	*
Clackamas High School.....	50	29	21	33	2	1	3	1	10	6	10	20	12	2	0
Clatskanie High School.....	11	7	4	10	0	0	0	1	0	4	4	1	2	0	0
Cleveland High School.....	89	46	43	50	7	16	9	7	0	26	24	13	19	7	0
Colton High School.....	2	*	*	*	*	*	*	*	*	*	*	*	*	*	*
Condon High School.....	0	0	0	0	0	0	0	0	0	0	0	0	0	0	0
Coquille High School.....	12	8	4	11	0	0	0	1	0	4	1	1	5	1	0
Corbett High School.....	2	*	*	*	*	*	*	*	*	*	*	*	*	*	*
Corvallis High School.....	38	20	18	28	0	8	0	2	0	3	8	11	16	0	0
Cottage Grove High School.....	19	9	10	*	*	*	*	*	*	1	5	5	3	5	0

Table A2. -- Dropouts by sex, race/ethnicity, and grade, grades9-12: 2000-01

School or other area	Dropouts	Sex		Race/ethnicity						Grade					
		Male	Female	White ¹	Black ¹	Hispanic	Asian / Pacific Islander	American Indian / Alaskan Native	No response	9	10	11	12	13	No Response
1	2	3	4	5	6	7	8	9	10	11	12	13	14	15	16
Cove School.....	1	*	*	*	*	*	*	*	*	*	*	*	*	*	*
Crane Union High School.....	0	0	0	0	0	0	0	0	0	0	0	0	0	0	0
Crater High School.....	88	45	43	82	0	4	2	0	0	3	17	20	35	13	0
Crescent Valley High School.....	17	11	6	14	0	0	3	0	0	0	1	6	10	0	0
Creswell High School.....	23	13	10	23	0	0	0	0	0	8	7	5	3	0	0
Crook County High School.....	28	13	15	*	*	*	*	*	*	1	3	6	4	14	0
Crow High School.....	0	0	0	0	0	0	0	0	0	0	0	0	0	0	0
Culver High School.....	10	5	5	6	0	4	0	0	0	3	1	2	2	2	0
Dallas High School.....	40	24	16	34	0	4	0	2	0	5	10	10	15	0	0
David Douglas High School.....	89	44	45	68	3	13	5	0	0	19	19	22	19	10	0
Days Creek School.....	2	*	*	*	*	*	*	*	*	*	*	*	*	*	*
Dayton High School.....	16	8	8	13	0	3	0	0	0	1	3	5	4	3	0
Dayville School.....	0	0	0	0	0	0	0	0	0	0	0	0	0	0	0
Douglas High School.....	42	17	25	42	0	0	0	0	0	13	13	12	2	2	0
Dufur School.....	1	*	*	*	*	*	*	*	*	*	*	*	*	*	*
Eagle Point High School.....	62	38	24	49	1	9	0	0	3	10	11	14	21	6	0
Echo School.....	2	*	*	*	*	*	*	*	*	*	*	*	*	*	*
Eddyville School.....	2	*	*	*	*	*	*	*	*	*	*	*	*	*	*
Elgin High School.....	2	*	*	*	*	*	*	*	*	*	*	*	*	*	*
Elkton High School.....	2	*	*	*	*	*	*	*	*	*	*	*	*	*	*
Elmira High School.....	26	15	11	23	0	3	0	0	0	8	4	10	4	0	0
Enterprise High School.....	0	0	0	0	0	0	0	0	0	0	0	0	0	0	0
Estacada High School.....	30	14	16	21	1	8	0	0	0	4	7	5	8	6	0
Falls City High School.....	7	1	6	7	0	0	0	0	0	1	1	2	3	0	0
Forest Grove High School.....	87	47	40	63	1	22	1	0	0	28	18	15	23	3	0
Franklin High School.....	115	64	51	91	6	7	9	2	0	29	21	24	16	25	0
Gaston High School.....	3	*	*	*	*	*	*	*	*	*	*	*	*	*	*
Gervais High School.....	17	10	7	5	0	12	0	0	0	5	3	5	4	0	0
Gilchrist School.....	4	*	*	*	*	*	*	*	*	*	*	*	*	*	*
Gladstone High School.....	13	7	6	8	0	5	0	0	0	1	2	5	3	2	0
Glencoe High School.....	48	18	30	25	2	21	0	0	0	15	12	12	9	0	0
Glendale High School.....	6	2	4	5	0	1	0	0	0	1	0	2	3	0	0
Glide High School.....	10	5	5	8	0	2	0	0	0	1	2	2	5	0	0
Gold Beach High School.....	6	3	3	2	0	0	0	0	4	1	1	1	1	2	0
Grant High School (Grant).....	2	*	*	*	*	*	*	*	*	*	*	*	*	*	*
Grant High School (Multnomah).....	67	37	30	34	21	9	2	1	0	16	12	16	15	8	0
Grants Pass High School.....	89	42	47	73	2	11	0	3	0	11	27	14	21	16	0
Gresham High School.....	83	61	22	58	6	9	7	3	0	11	8	13	12	38	1

Table A2. -- Dropouts by sex, race/ethnicity, and grade, grades9-12: 2000-01

School or other area	Dropouts	Sex		Race/ethnicity						Grade					
		Male	Female	White ¹	Black ¹	Hispanic	Asian / Pacific Islander	American Indian / Alaskan Native	No response	9	10	11	12	13	No Response
1	2	3	4	5	6	7	8	9	10	11	12	13	14	15	16
Harper School.....	0	0	0	0	0	0	0	0	0	0	0	0	0	0	0
Harrisburg High School.....	8	7	1	7	0	1	0	0	0	1	2	1	4	0	0
Helix School.....	0	0	0	0	0	0	0	0	0	0	0	0	0	0	0
Henley High School.....	16	9	7	13	0	2	0	1	0	3	3	7	3	0	0
Henry D Sheldon High School.....	17	10	7	11	1	2	1	1	1	5	1	5	6	0	0
Heppner High School.....	0	0	0	0	0	0	0	0	0	0	0	0	0	0	0
Hermiston High School.....	52	31	21	28	0	23	1	0	0	12	8	12	19	1	0
Hidden Valley High School.....	41	30	11	33	0	7	0	1	0	7	12	8	11	3	0
Hillsboro High School.....	46	30	16	20	1	25	0	0	0	11	11	6	18	0	0
Hood River Valley High School.....	22	13	9	8	0	13	0	1	0	2	7	6	6	1	0
Huntington School.....	0	0	0	0	0	0	0	0	0	0	0	0	0	0	0
Illinois Valley High School.....	14	7	7	14	0	0	0	0	0	2	1	2	6	3	0
Imbler High School.....	1	*	*	*	*	*	*	*	*	*	*	*	*	*	*
Ione School.....	0	0	0	0	0	0	0	0	0	0	0	0	0	0	0
Jefferson High School (Marion).....	12	4	8	10	0	2	0	0	0	1	4	4	2	1	0
Jefferson High School (Multnomah).....	66	42	24	15	34	12	5	0	0	14	19	13	11	9	0
Jewell School.....	2	*	*	*	*	*	*	*	*	*	*	*	*	*	*
John C. Fremont Jr High School.....	2	*	*	*	*	*	*	*	*	*	*	*	*	*	*
John F Kennedy High School.....	3	*	*	*	*	*	*	*	*	*	*	*	*	*	*
Jordan Valley High School.....	0	*	*	*	*	*	*	*	*	*	*	*	*	*	*
Jopseh High School	1	*	*	*	*	*	*	*	*	*	*	*	*	*	*
Joseph Lane Jr High School.....	5	*	*	*	*	*	*	*	*	*	*	*	*	*	*
Junction City High School.....	10	4	6	10	0	0	0	0	0	1	3	2	4	0	0
Klamath High School.....	47	24	23	34	1	6	0	6	0	6	12	16	11	2	0
Knappa High School.....	3	*	*	*	*	*	*	*	*	*	*	*	*	*	*
La Grande High School.....	42	23	19	33	0	4	4	1	0	7	6	18	7	3	1
Lake Oswego High School.....	45	29	16	41	0	1	2	0	1	5	6	14	13	7	0
Lakeridge High School.....	10	8	2	10	0	0	0	0	0	1	1	4	2	2	0
Lakeview High School.....	2	*	*	*	*	*	*	*	*	*	*	*	*	*	*
Lapine High School.....	17	8	9	17	0	0	0	0	0	3	7	2	4	1	0
Lebanon High School.....	82	44	38	77	0	3	1	1	0	20	25	19	18	0	0
Lincoln High School.....	47	25	22	38	3	2	3	1	0	13	9	8	12	5	0
Long Creek School.....	0	0	0	0	0	0	0	0	0	0	0	0	0	0	0
Lost River High School.....	13	7	6	4	0	9	0	0	0	2	6	4	0	1	0
Lowell High School.....	10	6	4	*	*	*	*	*	*	2	1	1	2	4	0
Madison High School.....	62	36	26	31	8	16	4	3	0	20	17	11	11	3	0
Madras High School.....	44	21	23	8	0	13	0	23	0	10	18	8	7	1	0
Mapleton High School.....	7	5	2	7	0	0	0	0	0	2	1	1	3	0	0

Table A2. -- Dropouts by sex, race/ethnicity, and grade, grades9-12: 2000-01

School or other area	Dropouts	Sex		Race/ethnicity						Grade					
		Male	Female	White ¹	Black ¹	Hispanic	Asian / Pacific Islander	American Indian / Alaskan Native	No response	9	10	11	12	13	No Response
1	2	3	4	5	6	7	8	9	10	11	12	13	14	15	16
Marshall High School (Multnomah)...	98	62	36	72	5	14	3	4	0	21	21	40	14	2	0
Marshfield High School.....	40	26	14	27	0	2	1	10	0	7	5	10	9	9	0
Mazama High School.....	33	20	13	22	0	10	0	0	1	2	7	11	6	7	0
Mc Kay High School.....	167	83	84	92	11	54	6	2	2	22	44	31	54	16	0
Mc Nary High School.....	95	59	36	65	0	21	1	3	5	12	22	19	23	19	0
McKenzie River High School.....	8	4	4	8	0	0	0	0	0	1	1	0	6	0	0
McLoughlin High School.....	38	27	11	14	0	24	0	0	0	9	14	8	7	0	0
McMinnville High School.....	111	61	50	89	1	20	1	0	0	5	18	26	59	3	0
Metropolitan Learning Center.....	3	*	*	*	*	*	*	*	*	*	*	*	*	*	*
Milwaukie High School.....	94	47	47	69	1	17	6	1	0	6	21	32	27	8	0
Mitchell School.....	1	*	*	*	*	*	*	*	*	*	*	*	*	*	*
Mohawk High School.....	3	*	*	*	*	*	*	*	*	*	*	*	*	*	*
Molalla High School.....	27	16	11	*	*	*	*	*	*	1	5	7	7	7	0
Monroe High School.....	1	*	*	*	*	*	*	*	*	*	*	*	*	*	*
Monument School.....	0	0	0	0	0	0	0	0	0	0	0	0	0	0	0
Mt View High School.....	31	19	12	28	0	3	0	0	0	2	9	14	4	2	0
Myrtle Point High School.....	9	4	5	8	0	1	0	0	0	1	4	1	3	0	0
Neah-Kah-Nie Jr-Sr High School.....	4	*	*	*	*	*	*	*	*	*	*	*	*	*	*
Nestucca High School.....	2	*	*	*	*	*	*	*	*	*	*	*	*	*	*
Newberg High School.....	101	50	51	76	3	21	0	1	0	19	42	27	5	8	0
Newport High School.....	43	25	18	32	0	7	2	1	1	8	11	10	14	0	0
North Bend High School.....	25	17	8	20	1	2	0	2	0	1	5	10	5	4	0
North Douglas High School.....	3	*	*	*	*	*	*	*	*	*	*	*	*	*	*
North Eugene High School.....	29	19	10	20	0	6	1	2	0	6	9	7	4	3	0
North Lake School.....	0	0	0	0	0	0	0	0	0	0	0	0	0	0	0
North Marion High School.....	5	*	*	*	*	*	*	*	*	*	*	*	*	*	*
North Medford High School.....	139	80	59	112	0	21	3	3	0	8	11	22	67	31	0
North Powder School.....	0	0	0	0	0	0	0	0	0	0	0	0	0	0	0
North Salem High School.....	187	102	85	108	3	57	5	2	12	24	39	52	55	17	0
North Valley High School.....	39	22	17	35	0	1	0	0	3	1	10	7	13	8	0
Nyssa High School.....	9	3	6	2	0	7	0	0	0	4	2	3	0	0	0
Oakland High School.....	9	5	4	9	0	0	0	0	0	1	3	2	3	0	0
Oakridge High School.....	12	6	6	10	0	2	0	0	0	4	4	1	3	0	0
Ontario High School.....	29	14	15	13	0	16	0	0	0	4	6	3	4	12	0
Oregon City HS.....	32	13	19	29	1	1	1	0	0	5	7	7	7	6	0
Pacific High School.....	3	*	*	*	*	*	*	*	*	*	*	*	*	*	*
Paisley School.....	0	0	0	0	0	0	0	0	0	0	0	0	0	0	0
Parkrose High School.....	62	34	28	37	7	14	3	1	0	4	9	12	18	19	0

Table A2. -- Dropouts by sex, race/ethnicity, and grade, grades9-12: 2000-01

School or other area	Dropouts	Sex		Race/ethnicity						Grade					
		Male	Female	White ¹	Black ¹	Hispanic	Asian / Pacific Islander	American Indian / Alaskan Native	No response	9	10	11	12	13	No Response
1	2	3	4	5	6	7	8	9	10	11	12	13	14	15	16
Pendleton High School.....	61	36	25	44	0	5	0	12	0	10	23	17	11	0	0
Perrydale School.....	2	*	*	*	*	*	*	*	*	*	*	*	*	*	*
Philomath High School.....	22	13	9	17	0	2	2	1	0	1	7	7	7	0	0
Phoenix High School.....	84	50	34	68	0	6	3	4	3	7	16	23	30	2	6
Pilot Rock High School.....	3	*	*	*	*	*	*	*	*	*	*	*	*	*	*
Pine Eagle High School.....	3	*	*	*	*	*	*	*	*	*	*	*	*	*	*
Pleasant Hill High School.....	1	*	*	*	*	*	*	*	*	*	*	*	*	*	*
Powers High School.....	0	0	0	0	0	0	0	0	0	0	0	0	0	0	0
Prairie City School.....	0	0	0	0	0	0	0	0	0	0	0	0	0	0	0
Prospect High School.....	5	*	*	*	*	*	*	*	*	*	*	*	*	*	*
Rainier High School.....	11	7	4	11	0	0	0	0	0	1	4	3	2	1	0
Redmond High School.....	39	18	21	37	0	1	1	0	0	2	5	11	10	11	0
Reedsport High School.....	18	8	10	17	0	1	0	0	0	0	5	2	10	1	0
Rex Putnam High School.....	41	22	19	31	1	5	0	0	4	4	5	20	7	5	0
Reynolds High School.....	102	64	38	79	0	21	0	2	0	47	34	14	6	1	0
Riddle High School.....	5	*	*	*	*	*	*	*	*	*	*	*	*	*	*
Riverdale High School.....	1	*	*	*	*	*	*	*	*	*	*	*	*	*	*
Riverside High School.....	18	11	7	15	0	3	0	0	0	2	3	9	1	3	0
Rogue River High School.....	21	13	8	20	0	0	0	1	0	7	3	1	10	0	0
Roosevelt High School.....	107	62	45	51	19	16	15	6	0	40	22	24	11	10	0
Roseburg High School.....	63	32	31	55	2	5	0	1	0	0	14	22	18	9	0
Sam Barlow High School.....	74	40	34	66	1	6	1	0	0	13	17	21	23	0	0
Sandy High School.....	30	17	13	24	1	2	1	2	0	3	9	10	6	2	0
Santiam High School.....	21	13	8	13	0	4	0	0	4	3	5	4	9	0	0
Scappoose High School.....	17	8	9	16	0	0	0	1	0	5	6	3	3	0	0
School Of Arts & Communication.....	6	2	4	6	0	0	0	0	0	0	1	3	1	1	0
School Of Science & Technology.....	2	*	*	*	*	*	*	*	*	*	*	*	*	*	*
Scio High School.....	1	*	*	*	*	*	*	*	*	*	*	*	*	*	*
Seaside High School.....	24	13	11	21	0	3	0	0	0	3	6	6	8	1	0
Sheridan High School.....	6	5	1	3	0	3	0	0	0	2	2	1	0	1	0
Sherman High School.....	0	0	0	0	0	0	0	0	0	0	0	0	0	0	0
Sherwood High School.....	28	13	15	16	0	2	2	1	7	2	8	6	5	7	0
Silverton High School.....	77	46	31	64	0	10	1	2	0	8	15	27	16	11	0
Sisters High School.....	6	3	3	6	0	0	0	0	0	0	0	1	3	0	2
Siuslaw High School.....	26	13	13	23	0	0	0	3	0	5	4	4	8	5	0
South Albany High School.....	99	60	39	89	1	7	0	2	0	21	32	24	20	2	0
South Eugene High School.....	35	19	16	25	1	0	4	3	2	9	9	14	3	0	0

Table A2. -- Dropouts by sex, race/ethnicity, and grade, grades9-12: 2000-01

School or other area	Dropouts	Sex		Race/ethnicity						Grade					
		Male	Female	White ¹	Black ¹	Hispanic	Asian / Pacific Islander	American Indian / Alaskan Native	No response	9	10	11	12	13	No Response
1	2	3	4	5	6	7	8	9	10	11	12	13	14	15	16
South Medford High School.....	175	91	84	124	5	37	4	5	0	9	17	35	90	24	0
South Salem High School.....	107	75	32	73	2	20	4	2	6	11	23	14	44	15	0
South Umpqua High School.....	43	25	18	35	0	4	0	4	0	8	10	5	7	13	0
Southridge High School.....	58	40	18	37	4	6	8	1	2	10	6	17	25	0	0
Sprague High School.....	89	47	42	72	0	8	1	2	6	9	13	22	28	17	0
Spray School.....	0	0	0	0	0	0	0	0	0	0	0	0	0	0	0
Springfield High School.....	78	41	37	59	1	18	0	0	0	11	14	19	19	15	0
St Helens High School.....	43	22	21	34	1	7	1	0	0	1	5	13	12	12	0
St Paul High School.....	3	*	*	*	*	*	*	*	*	*	*	*	*	*	*
Stanfield Secondary School.....	1	*	*	*	*	*	*	*	*	*	*	*	*	*	*
Stayton High School.....	67	40	27	59	0	4	2	2	0	8	18	34	6	1	0
Sunset High School.....	100	60	40	55	4	34	2	3	2	6	27	45	14	8	0
Sutherlin High School.....	16	7	9	14	0	2	0	0	0	1	8	4	3	0	0
Sweet Home High School.....	49	27	22	41	1	2	2	0	3	5	15	20	9	0	0
Taft High School.....	66	40	26	55	0	4	0	7	0	5	17	14	30	0	0
The Dalles High School.....	47	31	16	30	0	13	1	1	2	3	6	11	22	5	0
Thurston High School.....	72	39	33	65	0	3	3	1	0	17	13	15	13	14	0
Tigard High School.....	59	34	25	31	0	24	2	2	0	8	17	24	10	0	0
Tillamook High School.....	43	25	18	38	0	5	0	0	0	3	10	6	23	1	0
Toledo High School.....	26	18	8	20	0	0	0	6	0	0	7	7	10	2	0
Triangle Lake School.....	0	0	0	0	0	0	0	0	0	0	0	0	0	0	0
Tualatin High School.....	75	43	32	46	0	25	4	0	0	11	18	25	17	4	0
Ukiah High School.....	3	*	*	*	*	*	*	*	*	*	*	*	*	*	*
Umatilla High School.....	20	13	7	16	0	4	0	0	0	3	5	6	4	2	0
Union High School.....	0	0	0	0	0	0	0	0	0	0	0	0	0	0	0
Vale High School.....	10	6	4	7	0	3	0	0	0	2	3	3	1	1	0
Vernonia High School.....	14	10	4	14	0	0	0	0	0	1	2	5	5	1	0
Wahtonka High School.....	28	15	13	20	0	4	2	2	0	2	8	6	8	4	0
Waldport High School.....	14	7	7	13	0	0	0	1	0	0	6	5	3	0	0
Wallowa High School.....	0	0	0	0	0	0	0	0	0	0	0	0	0	0	0
Warrenton High School.....	16	9	7	*	*	*	*	*	*	0	1	6	9	0	0
Wasco County High School.....	5	*	*	*	*	*	*	*	*	*	*	*	*	*	*
West Albany High School.....	54	29	25	46	0	6	0	2	0	2	6	15	31	0	0
West Linn High School.....	29	20	9	28	0	0	1	0	0	2	4	4	9	10	0
Weston - McEwen High School.....	8	4	4	7	0	0	0	1	0	2	1	0	2	3	0
Westview High School.....	98	57	41	62	3	9	15	3	6	14	27	37	9	11	0
Wheeler High School.....	0	0	0	0	0	0	0	0	0	0	0	0	0	0	0
Willamette High School.....	89	48	41	76	0	7	3	3	0	23	15	20	18	13	0

Table A2. -- Dropouts by sex, race/ethnicity, and grade, grades9-12: 2000-01

School or other area	Dropouts	Sex		Race/ethnicity						Grade					
		Male	Female	White ¹	Black ¹	Hispanic	Asian / Pacific Islander	American Indian / Alaskan Native	No response	9	10	11	12	13	No Response
1	2	3	4	5	6	7	8	9	10	11	12	13	14	15	16
Willamina High School.....	13	9	4	12	0	0	0	1	0	4	4	2	1	2	0
Wilson High School.....	59	28	31	44	6	3	4	2	0	16	8	16	14	5	0
Wilsonville High School.....	23	9	14	17	0	4	2	0	0	1	10	6	5	1	0
Winston Churchill High School.....	15	11	4	8	2	3	1	0	1	2	9	3	1	0	0
Woodburn High School.....	104	54	50	33	0	69	0	2	0	19	26	20	30	9	0
Yamhill-Carlton High School.....	19	11	8	18	0	1	0	0	0	3	9	5	2	0	0
Yoncalla High School.....	4	*	*	*	*	*	*	*	*	*	*	*	*	*	*
II. Alternative Schools															
Brown Education Center	17	9	8	16	0	1	0	0	0	3	1	5	8	0	0
Centennial Learning Center.....	44	18	26	40	1	0	3	0	0	4	8	17	9	1	5
Churchill Alternative Education	20	8	12	18	0	2	0	0	0	2	3	13	2	0	0
Community School.....	84	20	64	53	4	20	4	1	2	15	23	27	16	3	0
Fariss Street School	5	*	*	*	*	*	*	*	*	*	*	*	*	*	*
Gateways Learning Center	4	*	*	*	*	*	*	*	*	*	*	*	*	*	*
Helensview High School.....	23	8	15	15	1	5	2	0	0	3	11	9	0	0	0
Marshall High School (Deschutes)...	90	52	38	80	0	9	0	0	1	14	16	30	26	4	0
Opportunity Center.....	50	23	27	43	1	1	0	3	2	16	13	12	9	0	0
Opportunity House	18	11	7	16	0	2	0	0	0	2	7	4	1	0	4
PPS Alternative Programs.....	929	473	456	429	223	166	60	51	0	192	240	274	155	68	0
Roberts HSC/TPP	54	4	50	23	1	23	2	1	4	7	7	8	32	0	0
South Lane Academy.....	22	13	9	21	0	0	0	1	0	0	4	6	8	4	0
III. Charter Schools															
21st Century Academy	6	3	3	5	0	0	0	1	0	3	2	1	0	0	0
Armadillo Technical Academy	5	*	*	*	*	*	*	*	*	*	*	*	*	*	*
Destinations Charter School	17	8	9	14	0	3	0	0	0	4	5	5	3	0	0
Lincoln City Career Technical High	10	3	7	9	0	0	0	0	1	1	4	1	2	2	0
Mc Coy Public Charter School	20	7	13	9	9	0	0	2	0	1	4	3	9	3	0
Molalla Alternative Options	31	15	16	*	*	*	*	*	*	2	2	7	5	15	0
Pioneer Youth Corps Academy	2	*	*	*	*	*	*	*	*	*	*	*	*	*	0
Willamette Valley Community School	0	0	0	0	0	0	0	0	0	0	0	0	0	0	0
IV. School Districts															
Beaverton SD 48J.....	550	305	245	335	23	118	41	15	18	66	112	194	127	51	0
Bend SD1.....	209	108	101	193	0	14	1	0	1	33	47	70	49	10	0
Coos Bay SD 9	57	34	23	41	0	5	1	10	0	11	10	15	12	9	0
Corvallis SD 509J.....	55	31	24	42	0	8	3	2	0	3	9	17	26	0	0
Eugene SD 4J.....	168	91	77	127	5	14	7	9	6	41	45	54	25	3	0
Greater Albany SD 8J.....	153	89	64	135	1	13	0	4	0	23	38	39	51	2	0

Table A2. -- Dropouts by sex, race/ethnicity, and grade, grades9-12: 2000-01

School or other area	Dropouts	Sex		Race/ethnicity						Grade					
		Male	Female	White ¹	Black ¹	Hispanic	Asian / Pacific Islander	American Indian / Alaskan Native	No response	9	10	11	12	13	No Response
1	2	3	4	5	6	7	8	9	10	11	12	13	14	15	16
Gresham-Barlow SD 10J.....	162	105	57	129	7	15	8	3	0	25	26	37	35	38	1
Hillsboro SD 1J.....	159	87	72	75	3	79	2	0	0	39	41	32	47	0	0
Hood River SD 1.....	24	15	9	10	0	13	0	1	0	3	7	6	7	1	0
Klamath County SD.....	37	21	16	24	0	11	0	2	0	8	10	13	5	1	0
Klamath Falls City Schools.....	80	44	36	56	1	16	0	6	1	8	19	27	17	9	0
Lake Oswego SD 7J.....	55	37	18	51	0	1	2	0	1	6	7	18	15	9	0
Lincoln County SD.....	162	93	69	132	0	11	2	15	2	15	45	37	60	5	0
Medford SD 549.....	314	171	143	236	5	58	7	8	0	17	28	57	157	55	0
Molalla SD 35.....	58	31	27	51	1	5	1	0	0	3	7	14	12	22	0
Morrow SD 1.....	18	11	7	15	0	3	0	0	0	2	3	9	1	3	0
North Clackamas SD 12.....	185	98	87	133	4	23	9	2	14	16	36	72	46	15	0
Phoenix-Talent SD 4	89	53	36	72	0	6	4	4	3	8	17	23	31	4	6
Portland SD 1J.....	1,696	907	789	891	346	262	117	80	0	391	404	445	303	153	0
Roseburg SD 4.....	126	54	72	105	5	11	2	3	0	7	25	34	30	30	0
Salem/Keizer SD 24J.....	709	375	334	439	18	184	19	13	36	88	150	147	240	84	0
Sheridan SD 48J.....	24	16	8	19	0	5	0	0	0	4	9	5	1	1	4
Springfield SD19.....	154	84	70	128	1	21	3	1	0	28	28	36	33	29	0
Three Rivers SD.....	94	59	35	82	0	8	0	1	3	10	23	17	30	14	0
Tigard SD 23J.....	134	77	57	77	0	49	6	2	0	19	35	49	27	4	0
West Linn SD 3J.....	52	29	23	45	0	4	3	0	0	3	14	10	14	11	0
V. Counties															
Baker County.....	19	8	11	18	0	1	0	0	0	2	2	1	14	0	0
Benton County.....	81	46	35	62	0	11	5	3	0	4	17	26	34	0	0
Clackamas County.....	502	266	236	393	8	65	17	4	15	43	103	158	124	74	0
Clatsop County.....	66	38	28	51	1	12	1	1	0	8	9	19	25	5	0
Columbia County.....	96	54	42	85	1	7	1	2	0	12	21	25	24	14	0
Coos County.....	107	66	41	84	1	8	1	13	0	17	20	27	26	17	0
Crook County.....	28	13	15	25	1	2	0	0	0	1	3	6	4	14	0
Curry County.....	45	24	21	35	0	4	1	1	4	13	4	9	16	3	0
Deschutes County.....	271	138	133	252	0	16	2	0	1	38	53	87	70	21	2
Douglas County.....	287	132	155	251	5	22	2	7	0	33	73	67	66	48	0
Gilliam County.....	0	0	0	0	0	0	0	0	0	0	0	0	0	0	0
Grant County.....	2	*	*	*	*	*	*	*	*	*	*	*	*	*	*
Harney County.....	11	7	4	10	0	1	0	0	0	1	0	6	2	2	0
Hood River County.....	24	15	9	10	0	13	0	1	0	3	7	6	7	1	0
Jackson County.....	622	357	265	500	8	80	13	15	6	52	85	127	270	82	6
Jefferson County.....	54	26	28	14	0	17	0	23	0	13	19	10	9	3	0
Josephine County.....	183	101	82	155	2	19	0	4	3	21	50	31	51	30	0

Table A2. -- Dropouts by sex, race/ethnicity, and grade, grades9-12: 2000-01

School or other area	Dropouts	Sex		Race/ethnicity						Grade					
		Male	Female	White ¹	Black ¹	Hispanic	Asian / Pacific Islander	American Indian / Alaskan Native	No response	9	10	11	12	13	No Response
1	2	3	4	5	6	7	8	9	10	11	12	13	14	15	16
Klamath County.....	117	65	52	80	1	27	0	8	1	16	29	40	22	10	0
Lake County.....	2	*	*	*	*	*	*	*	*	*	*	*	*	*	*
Lane County.....	578	314	264	479	7	53	14	17	8	124	123	146	122	63	0
Lincoln County.....	161	93	68	131	0	11	2	15	2	15	45	37	60	5	0
Linn County.....	330	193	137	289	2	23	3	5	8	55	87	87	99	2	0
Malheur County.....	49	23	26	23	0	26	0	0	0	10	11	10	5	13	0
Marion County.....	1,034	553	481	648	19	290	22	19	36	137	226	249	315	107	0
Morrow County.....	18	11	7	15	0	3	0	0	0	2	3	9	1	3	0
Multnomah County.....	2,291	1,240	1,051	1,344	365	348	148	86	0	514	534	578	425	233	7
Polk County.....	97	49	48	70	0	20	0	4	3	11	13	33	40	0	0
Sherman County.....	0	0	0	0	0	0	0	0	0	0	0	0	0	0	0
Tillamook County.....	49	28	21	43	0	5	1	0	0	3	13	7	24	2	0
Umatilla County.....	188	117	71	117	0	56	1	14	0	36	51	46	44	11	0
Union County.....	46	24	22	37	0	4	4	1	0	8	7	18	9	3	1
Wallowa County.....	1	*	*	*	*	*	*	*	*	*	*	*	*	*	*
Wasco County.....	81	50	31	55	0	17	3	4	2	6	15	18	33	9	0
Washington County.....	976	543	433	581	27	273	52	18	25	157	216	298	235	70	0
Wheeler County.....	1	*	*	*	*	*	*	*	*	*	*	*	*	*	*
Yamhill County.....	296	163	133	237	4	52	1	2	0	38	90	71	76	17	4

* Detailed data is suppressed to protect student confidentiality.

¹ Not of Hispanic origin.

SOURCE: Oregon Department of Education, Office of Student Services, Individual Early Leaver Report.

Table A3. -- Time enrolled in district, circumstance upon withdrawal, rescinded students, grades 9-12: 2000-01

School or other area	Dropouts	Time enrolled in district						Circumstance upon withdrawal						Former dropouts returning to school		
		Less than 2 weeks	2 weeks to 2 months	2 months to 1 year	1 year to 5 years	More than 5 years	No response	Left school without notice	Unregistered home schooler	Joined the military service	Withdrew from district sponsored alt. ed.	Moved with a migrant family	Expelled or suspended and did not return		No response	
1	2	3	4	5	6	7	8	9	10	11	12	13	14	15	16	
Oregon Statewide Totals.....	8,713	233	636	1,589	3,211	3,043	1	2,264	115	14	1,391	82	133	4,714	843	
I. Schools																
Adrian High School.....	1	*	*	*	*	*	*	*	*	*	*	*	*	*	*	
Aloha High School.....	106	2	6	14	38	46	0	48	1	0	29	0	0	28	15	
Alsea School.....	3	*	*	*	*	*	*	*	*	*	*	*	*	*	*	
Amity High School.....	12	0	0	0	3	9	0	0	0	0	0	0	1	11	0	
Arlington High School.....	0	0	0	0	0	0	0	0	0	0	0	0	0	0	0	
Ashland High School.....	39	2	3	6	15	13	0	3	0	0	28	0	1	7	4	
Astoria High School.....	21	0	0	7	7	7	0	0	0	0	0	0	0	21	0	
Baker High School.....	16	1	0	2	6	7	0	1	0	0	0	0	0	15	0	
Bandon High School.....	4	*	*	*	*	*	*	*	*	*	*	*	*	*	*	
Banks High School.....	15	0	0	0	9	6	0	9	0	0	1	0	0	5	0	
Beaverton High School.....	96	0	6	15	31	44	0	37	0	0	26	1	2	30	22	
Bend High School.....	71	0	1	3	31	36	0	0	0	0	0	0	0	71	0	
Benson High School.....	34	0	0	2	9	23	0	0	0	0	0	0	0	34	0	
Bonanza School.....	1	*	*	*	*	*	*	*	*	*	*	*	*	*	*	
Brookings Harbor High School.....	36	0	4	10	10	12	0	1	0	0	0	0	0	35	0	
Burns High School.....	11	0	0	3	7	1	0	1	0	0	0	0	0	10	0	
Burnt River School.....	0	0	0	0	0	0	0	0	0	0	0	0	0	0	0	
Butte Falls High School.....	4	*	*	*	*	*	*	*	*	*	*	*	*	*	*	
Camas Valley School.....	1	*	*	*	*	*	*	*	*	*	*	*	*	*	*	
Canby High School.....	45	0	2	9	34	0	0	44	0	0	0	0	0	1	1	
Cascade High School.....	37	0	1	5	27	4	0	3	3	0	0	0	0	31	0	
Cascade Locks School.....	2	*	*	*	*	*	*	*	*	*	*	*	*	*	*	
Centennial High School.....	110	5	5	24	43	33	0	59	1	0	1	1	4	44	0	
Central High School.....	48	3	15	5	2	23	0	10	0	1	0	0	0	37	7	
Central Linn High School.....	16	0	0	1	8	7	0	1	0	0	0	14	0	0	1	
Century High School.....	65	0	0	14	28	23	0	5	0	0	0	0	0	60	0	
Chiloquin High School.....	3	0	3	0	0	0	0	2	1	0	0	0	0	0	0	
Clackamas High School.....	50	0	0	9	29	12	0	14	2	0	11	0	1	22	15	
Clatskanie High School.....	11	0	1	3	7	0	0	0	0	0	1	0	0	10	0	
Cleveland High School.....	89	0	6	20	23	40	0	52	0	0	0	0	0	37	0	
Colton High School.....	2	*	*	*	*	*	*	*	*	*	*	*	*	*	*	
Condon High School.....	0	0	0	0	0	0	0	0	0	0	0	0	0	0	0	
Coquille High School.....	12	0	0	4	8	0	0	5	0	0	6	0	0	1	0	
Corbett High School.....	2	*	*	*	*	*	*	*	*	*	*	*	*	*	*	
Corvallis High School.....	38	0	2	7	7	22	0	0	1	0	5	0	0	32	5	
Cottage Grove High School.....	19	1	0	7	4	7	0	2	0	0	0	2	0	15	0	

Table A3. -- Time enrolled in district, circumstance upon withdrawal, rescinded students, grades 9-12: 2000-01

School or other area	Dropouts	Time enrolled in district						Circumstance upon withdrawal						Former dropouts returning to school	
		Less than 2 weeks	2 weeks to 2 months	2 months to 1 year	1 year to 5 years	More than 5 years	No response	Left school without notice	Unregistered home schooler	Joined the military service	Withdrew from district sponsored alt. ed.	Moved with a migrant family	Expelled or suspended and did not return		No response
1	2	3	4	5	6	7	8	9	10	11	12	13	14	15	16
Cove School.....	1	*	*	*	*	*	*	*	*	*	*	*	*	*	*
Crane Union High School.....	0	0	0	0	0	0	0	0	0	0	0	0	0	0	0
Crater High School.....	88	4	5	19	52	8	0	14	1	0	48	0	0	25	0
Crescent Valley High School.....	17	1	2	0	4	10	0	0	0	0	0	0	0	17	0
Creswell High School.....	23	0	2	3	7	11	0	4	0	0	2	0	0	17	7
Crook County High School.....	28	0	5	2	12	9	0	12	3	0	10	0	0	3	0
Crow High School.....	0	0	0	0	0	0	0	0	0	0	0	0	0	0	0
Culver High School.....	10	0	0	4	4	2	0	4	3	0	0	1	0	2	0
Dallas High School.....	40	1	2	8	11	18	0	18	2	0	0	0	0	20	5
David Douglas High School.....	89	11	8	21	49	0	0	22	2	0	0	1	0	64	3
Days Creek School.....	2	*	*	*	*	*	*	*	*	*	*	*	*	*	*
Dayton High School.....	16	2	1	3	5	5	0	3	0	0	4	0	0	9	1
Dayville School.....	0	0	0	0	0	0	0	0	0	0	0	0	0	0	0
Douglas High School.....	42	0	5	15	13	9	0	17	1	0	7	0	0	17	0
Dufur School.....	1	*	*	*	*	*	*	*	*	*	*	*	*	*	*
Eagle Point High School.....	62	0	5	20	33	4	0	46	2	0	1	2	1	10	3
Echo School.....	2	*	*	*	*	*	*	*	*	*	*	*	*	*	*
Eddyville School.....	2	*	*	*	*	*	*	*	*	*	*	*	*	*	*
Elgin High School.....	2	*	*	*	*	*	*	*	*	*	*	*	*	*	*
Elkton High School.....	2	*	*	*	*	*	*	*	*	*	*	*	*	*	*
Elmira High School.....	26	0	1	2	6	17	0	8	0	0	1	0	0	17	3
Enterprise High School.....	0	0	0	0	0	0	0	0	0	0	0	0	0	0	0
Estacada High School.....	30	0	1	3	13	13	0	2	5	0	2	4	0	17	0
Falls City High School.....	7	2	2	1	1	1	0	1	1	0	2	0	0	3	1
Forest Grove High School.....	87	0	4	22	55	6	0	0	0	0	0	0	0	87	2
Franklin High School.....	115	0	3	17	20	75	0	0	0	0	0	0	1	114	0
Gaston High School.....	3	*	*	*	*	*	*	*	*	*	*	*	*	*	*
Gervais High School.....	17	1	5	7	4	0	0	7	0	0	0	3	1	6	0
Gilchrist School.....	4	*	*	*	*	*	*	*	*	*	*	*	*	*	*
Gladstone High School.....	13	0	3	1	9	0	0	0	0	0	2	3	0	8	0
Glencoe High School.....	48	0	1	8	39	0	0	0	0	0	0	0	0	48	0
Glendale High School.....	6	0	0	2	4	0	0	2	0	0	1	0	0	3	0
Glide High School.....	10	0	0	4	3	3	0	2	0	0	2	0	1	5	1
Gold Beach High School.....	6	2	1	1	2	0	0	0	0	0	0	0	0	6	0
Grant High School (Grant).....	2	*	*	*	*	*	*	*	*	*	*	*	*	*	*
Grant High School (Multnomah).....	67	3	3	7	10	44	0	48	1	0	1	1	0	16	0

Table A3. -- Time enrolled in district, circumstance upon withdrawal, rescinded students, grades 9-12: 2000-01

School or other area	Dropouts	Time enrolled in district						Circumstance upon withdrawal						Former dropouts returning to school	
		Less than 2 weeks	2 weeks to 2 months	2 months to 1 year	1 year to 5 years	More than 5 years	No response	Left school without notice	Unregistered home schooler	Joined the military service	Withdrew from district sponsored alt. ed.	Moved with a migrant family	Expelled or suspended and did not return		No response
1	2	3	4	5	6	7	8	9	10	11	12	13	14	15	16
Grants Pass High School.....	89	0	0	13	38	38	0	33	2	0	14	0	4	36	7
Gresham High School.....	83	0	2	10	37	34	0	3	1	0	2	0	0	77	0
Harper School.....	0	0	0	0	0	0	0	0	0	0	0	0	0	0	0
Harrisburg High School.....	8	0	1	1	6	0	0	1	0	0	0	0	0	7	2
Helix School.....	0	0	0	0	0	0	0	0	0	0	0	0	0	0	0
Henley High School.....	16	3	3	2	8	0	0	10	0	0	0	1	1	4	0
Henry D Sheldon High School.....	17	1	0	2	6	8	0	16	0	0	0	0	1	0	0
Heppner High School.....	0	0	0	0	0	0	0	0	0	0	0	0	0	0	0
Hermiston High School.....	52	17	5	13	16	1	0	3	1	0	0	1	0	47	2
Hidden Valley High School.....	41	0	7	14	11	9	0	17	1	0	10	0	0	13	0
Hillsboro High School.....	46	0	2	10	16	18	0	13	0	0	0	4	2	27	0
Hood River Valley High School.....	22	0	0	9	5	8	0	3	2	0	1	4	2	10	4
Huntington School.....	0	0	0	0	0	0	0	0	0	0	0	0	0	0	0
Illinois Valley High School.....	14	0	2	1	6	5	0	2	0	0	0	0	0	12	0
Imbler High School.....	1	*	*	*	*	*	*	*	*	*	*	*	*	*	*
lone School.....	0	0	0	0	0	0	0	0	0	0	0	0	0	0	0
Jefferson High School (Marion).....	12	0	1	2	5	4	0	2	0	0	2	0	0	8	1
Jefferson High School (Multnomah).....	66	1	2	6	17	40	0	25	0	0	0	1	0	40	0
Jewell School.....	2	*	*	*	*	*	*	*	*	*	*	*	*	*	*
John C. Fremont Jr High School.....	2	*	*	*	*	*	*	*	*	*	*	*	*	*	*
John F Kennedy High School.....	3	*	*	*	*	*	*	*	*	*	*	*	*	*	*
Jordan Valley High School.....	0	0	0	0	0	0	0	0	0	0	0	0	0	0	0
Joseph High School.....	1	*	*	*	*	*	*	*	*	*	*	*	*	*	*
Joseph Lane Jr High School.....	5	*	*	*	*	*	*	*	*	*	*	*	*	*	*
Junction City High School.....	10	0	0	0	8	2	0	0	0	0	0	0	0	10	1
Klamath High School.....	47	1	6	15	25	0	0	28	1	0	12	1	1	4	0
Knappa High School.....	3	*	*	*	*	*	*	*	*	*	*	*	*	*	*
La Grande High School.....	42	0	8	12	13	9	0	29	3	0	1	0	0	9	0
Lake Oswego High School.....	45	9	5	12	19	0	0	35	0	1	1	1	0	7	0
Lakeridge High School.....	10	0	0	1	9	0	0	4	1	0	0	0	0	5	0
Lakeview High School.....	2	*	*	*	*	*	*	*	*	*	*	*	*	*	*
Lapine High School.....	17	0	0	6	1	10	0	12	3	0	2	0	0	0	0
Lebanon High School.....	82	6	3	1	71	1	0	12	2	0	0	0	4	64	13
Lincoln High School.....	47	1	2	7	14	23	0	19	0	0	0	1	0	27	0
Long Creek School.....	0	0	0	0	0	0	0	0	0	0	0	0	0	0	0
Lost River High School.....	13	0	0	2	11	0	0	0	0	0	0	2	1	10	0
Lowell High School.....	10	0	0	1	3	6	0	3	1	0	5	0	0	1	1

Table A3. -- Time enrolled in district, circumstance upon withdrawal, rescinded students, grades 9-12: 2000-01

School or other area	Dropouts	Time enrolled in district							Circumstance upon withdrawal							Former dropouts returning to school
		Less than 2 weeks	2 weeks to 2 months	2 months to 1 year	1 year to 5 years	More than 5 years	No response	Left school without notice	Unregistered home schooler	Joined the military service	Withdrew from district sponsored alt. ed.	Moved with a migrant family	Expelled or suspended and did not return	No response		
1	2	3	4	5	6	7	8	9	10	11	12	13	14	15	16	
Madison High School.....	62	1	5	12	17	27	0	59	0	0	0	0	0	3	0	
Madras High School.....	44	0	0	0	44	0	0	38	0	0	2	1	1	2	0	
Mapleton High School.....	7	0	1	1	2	3	0	1	0	0	2	0	1	3	0	
Marshall High School (Multnomah)...	98	0	9	17	20	52	0	0	0	0	0	0	0	98	0	
Marshfield High School.....	40	0	4	4	9	23	0	5	0	0	5	0	1	29	13	
Mazama High School.....	33	1	5	9	18	0	0	0	0	0	0	0	0	33	0	
Mc Kay High School.....	167	1	10	30	44	82	0	0	0	0	15	0	4	147	53	
Mc Nary High School.....	95	1	4	11	30	49	0	0	0	0	10	0	1	84	18	
McKenzie River High School.....	8	0	2	1	3	2	0	0	0	0	0	0	0	8	0	
McLoughlin High School.....	38	0	0	7	14	17	0	4	0	0	11	0	0	23	0	
McMinnville High School.....	111	8	5	10	53	35	0	10	1	0	0	4	0	96	0	
Metropolitan Learning Center.....	3	*	*	*	*	*	*	*	*	*	*	*	*	*	*	
Milwaukie High School.....	94	0	3	3	57	31	0	3	0	0	20	0	1	70	31	
Mitchell School.....	1	*	*	*	*	*	*	*	*	*	*	*	*	*	*	
Mohawk High School.....	3	0	0	0	2	1	0	1	0	0	0	0	0	2	0	
Molalla High School.....	27	1	1	4	21	0	0	13	2	0	1	1	1	9	0	
Monroe High School.....	1	*	*	*	*	*	*	*	*	*	*	*	*	*	*	
Monument School.....	0	0	0	0	0	0	0	0	0	0	0	0	0	0	0	
Mt View High School.....	31	0	1	8	13	9	0	18	2	0	3	0	3	5	0	
Myrtle Point High School.....	9	0	3	0	1	5	0	1	0	0	1	1	0	6	0	
Neah-Kah-Nie Jr-Sr High School.....	4	*	*	*	*	*	*	*	*	*	*	*	*	*	*	
Nestucca High School.....	2	*	*	*	*	*	*	*	*	*	*	*	*	*	*	
Newberg High School.....	101	2	13	14	30	42	0	14	3	0	20	0	1	63	11	
Newport High School.....	43	2	11	2	4	24	0	1	1	0	2	0	3	36	6	
North Bend High School.....	25	0	2	3	20	0	0	14	0	0	3	1	1	6	0	
North Douglas High School.....	3	*	*	*	*	*	*	*	*	*	*	*	*	*	*	
North Eugene High School.....	29	6	5	7	11	0	0	14	1	0	0	0	3	11	0	
North Lake School.....	0	0	0	0	0	0	0	0	0	0	0	0	0	0	0	
North Marion High School.....	5	*	*	*	*	*	*	*	*	*	*	*	*	*	*	
North Medford High School.....	139	0	6	15	46	72	0	44	3	0	50	2	0	40	0	
North Powder School.....	0	0	0	0	0	0	0	0	0	0	0	0	0	0	0	
North Salem High School.....	187	4	4	26	51	102	0	0	0	0	11	0	0	175	27	
North Valley High School.....	39	0	3	9	18	9	0	9	0	0	22	0	2	6	0	
Nyssa High School.....	9	3	0	1	4	1	0	7	0	0	0	0	0	2	0	
Oakland High School.....	9	0	3	1	1	4	0	3	0	0	6	0	0	0	0	
Oakridge High School.....	12	0	0	3	6	3	0	6	0	0	4	0	0	2	0	
Ontario High School.....	29	0	0	6	13	10	0	1	0	0	2	0	0	26	0	

Table A3. -- Time enrolled in district, circumstance upon withdrawal, rescinded students, grades 9-12: 2000-01

School or other area	Dropouts	Time enrolled in district						Circumstance upon withdrawal						Former dropouts returning to school	
		Less than 2 weeks	2 weeks to 2 months	2 months to 1 year	1 year to 5 years	More than 5 years	No response	Left school without notice	Unregistered home schooler	Joined the military service	Withdrew from district sponsored alt. ed.	Moved with a migrant family	Expelled or suspended and did not return		No response
1	2	3	4	5	6	7	8	9	10	11	12	13	14	15	16
Oregon City HS - Jackson.....	32	0	7	8	9	8	0	14	0	0	10	0	0	8	0
Pacific High School.....	3	*	*	*	*	*	*	*	*	*	*	*	*	*	*
Paisley School.....	0	0	0	0	0	0	0	0	0	0	0	0	0	0	0
Parkrose High School.....	62	1	10	16	18	17	0	5	0	0	9	0	0	48	0
Pendleton High School.....	61	4	15	8	24	10	0	35	4	0	1	0	0	21	0
Perrydale School.....	2	*	*	*	*	*	*	*	*	*	*	*	*	*	*
Philomath High School.....	22	3	1	3	7	8	0	0	0	0	0	0	0	22	11
Phoenix High School.....	84	7	26	49	2	0	0	3	0	0	3	0	2	76	0
Pilot Rock High School.....	3	*	*	*	*	*	*	*	*	*	*	*	*	*	*
Pine Eagle High School.....	3	*	*	*	*	*	*	*	*	*	*	*	*	*	*
Pleasant Hill High School.....	1	*	*	*	*	*	*	*	*	*	*	*	*	*	*
Powers High School.....	0	0	0	0	0	0	0	0	0	0	0	0	0	0	0
Prairie City School.....	0	0	0	0	0	0	0	0	0	0	0	0	0	0	0
Prospect High School.....	5	*	*	*	*	*	*	*	*	*	*	*	*	*	*
Rainier High School.....	11	0	0	2	9	0	0	4	4	0	2	0	0	1	0
Redmond High School.....	39	2	5	4	11	17	0	4	0	0	5	1	1	28	3
Reedsport High School.....	18	0	1	2	4	11	0	2	0	1	11	0	0	4	0
Rex Putnam High School.....	41	0	3	9	19	10	0	0	0	0	0	0	0	41	2
Reynolds High School.....	102	3	7	36	56	0	0	0	0	1	1	0	0	100	0
Riddle High School.....	5	*	*	*	*	*	*	*	*	*	*	*	*	*	*
Riverdale High School.....	1	*	*	*	*	*	*	*	*	*	*	*	*	*	*
Riverside High School.....	18	0	2	7	9	0	0	16	0	0	0	0	0	2	0
Rogue River High School.....	21	0	2	1	13	5	0	2	1	0	0	3	0	15	3
Roosevelt High School.....	107	0	1	15	33	58	0	70	2	0	0	0	0	35	0
Roseburg High School.....	63	2	1	6	29	25	0	15	2	0	10	0	1	35	2
Sam Barlow High School.....	74	15	5	12	42	0	0	6	2	0	2	0	0	64	1
Sandy High School.....	30	1	3	5	20	1	0	7	1	1	1	0	0	20	3
Santiam High School.....	21	4	3	10	3	1	0	4	1	0	0	0	1	15	1
Scappoose High School.....	17	1	2	4	7	3	0	9	1	0	0	0	1	6	0
School Of Arts & Communication.....	6	0	0	2	3	1	0	1	0	0	0	0	0	5	2
School Of Science & Technology.....	2	*	*	*	*	*	*	*	*	*	*	*	*	*	*
Scio High School.....	1	*	*	*	*	*	*	*	*	*	*	*	*	*	*
Seaside High School.....	24	0	0	8	13	3	0	0	0	0	0	0	0	24	0
Sheridan High School.....	6	0	2	1	2	1	0	1	0	0	0	2	0	3	0
Sherman High School.....	0	0	0	0	0	0	0	0	0	0	0	0	0	0	0
Sherwood High School.....	28	0	5	5	18	0	0	0	0	0	0	0	0	28	0
Silverton High School.....	77	2	2	16	57	0	0	16	0	0	5	1	2	53	2

Table A3. -- Time enrolled in district, circumstance upon withdrawal, rescinded students, grades 9-12: 2000-01

School or other area	Dropouts	Time enrolled in district							Circumstance upon withdrawal							Former dropouts returning to school
		Less than 2 weeks	2 weeks to 2 months	2 months to 1 year	1 year to 5 years	More than 5 years	No response	Left school without notice	Unregistered home schooler	Joined the military service	Withdrew from district sponsored alt. ed.	Moved with a migrant family	Expelled or suspended and did not return	No response		
1	2	3	4	5	6	7	8	9	10	11	12	13	14	15	16	
Sisters High School.....	6	0	0	2	3	1	0	3	0	0	1	0	0	2	1	
Siuslaw High School.....	26	0	0	3	10	13	0	5	0	1	3	0	1	16	5	
South Albany High School.....	99	3	2	15	17	62	0	1	1	0	43	0	6	48	12	
South Eugene High School.....	35	7	1	14	13	0	0	16	0	0	0	0	0	19	0	
South Medford High School.....	175	2	10	17	59	87	0	19	1	0	94	11	0	50	0	
South Salem High School.....	107	1	2	21	30	53	0	0	0	0	12	0	0	91	39	
South Umpqua High School.....	43	0	0	0	40	3	0	41	0	0	1	0	1	0	0	
Southridge High School.....	58	3	6	11	16	22	0	28	0	0	10	1	1	18	0	
Sprague High School.....	89	1	1	9	19	59	0	0	0	0	9	0	0	80	21	
Spray School.....	0	0	0	0	0	0	0	0	0	0	0	0	0	0	0	
Springfield High School.....	78	0	9	17	26	26	0	4	0	1	3	0	0	70	0	
St Helens High School.....	43	0	0	6	11	26	0	8	0	0	25	0	0	10	0	
St Paul High School.....	3	*	*	*	*	*	*	*	*	*	*	*	*	*	*	
Stanfield Secondary School.....	1	*	*	*	*	*	*	*	*	*	*	*	*	*	*	
Stayton High School.....	67	1	5	17	35	9	0	30	0	0	18	0	3	16	1	
Sunset High School.....	100	4	7	21	29	39	0	58	0	0	5	0	1	36	13	
Sutherlin High School.....	16	0	4	4	5	3	0	3	0	0	13	0	0	0	0	
Sweet Home High School.....	49	15	5	8	4	17	0	1	0	0	0	1	0	47	5	
Taft High School.....	66	1	1	15	30	19	0	0	0	0	0	1	0	65	1	
The Dalles High School.....	47	1	2	2	40	2	0	34	0	0	2	0	0	11	1	
Thurston High School.....	72	6	6	20	10	30	0	14	1	0	0	0	0	57	21	
Tigard High School.....	59	1	4	9	21	24	0	9	0	0	15	4	5	26	0	
Tillamook High School.....	43	0	1	8	34	0	0	16	1	0	0	1	0	25	13	
Toledo High School.....	26	1	0	2	9	14	0	0	0	0	0	0	0	26	0	
Triangle Lake School.....	0	0	0	0	0	0	0	0	0	0	0	0	0	0	0	
Tualatin High School.....	75	0	9	13	26	27	0	4	4	0	12	0	0	55	0	
Ukiah High School.....	3	*	*	*	*	*	*	*	*	*	*	*	*	*	*	
Umatilla High School.....	20	0	1	5	12	2	0	4	0	0	0	0	0	16	0	
Union High School.....	0	0	0	0	0	0	0	0	0	0	0	0	0	0	0	
Vale High School.....	10	0	1	5	4	0	0	0	0	0	1	0	0	9	0	
Vernonia High School.....	14	1	1	2	3	7	0	11	0	0	0	1	1	1	0	
Wahntonka High School.....	28	1	6	5	6	10	0	2	0	0	15	1	0	10	0	
Waldport High School.....	14	0	2	3	2	7	0	0	2	0	6	0	1	5	2	
Wallowa High School.....	0	0	0	0	0	0	0	0	0	0	0	0	0	0	0	
Warrenton High School.....	16	0	0	5	6	5	0	6	0	0	1	0	1	8	0	
Wasco County High School.....	5	*	*	*	*	*	*	*	*	*	*	*	*	*	*	
West Albany High School.....	54	1	0	4	13	36	0	11	0	0	33	0	0	10	7	

Table A3. -- Time enrolled in district, circumstance upon withdrawal, rescinded students, grades 9-12: 2000-01

School or other area	Dropouts	Time enrolled in district						Circumstance upon withdrawal						Former dropouts returning to school	
		Less than 2 weeks	2 weeks to 2 months	2 months to 1 year	1 year to 5 years	More than 5 years	No response	Left school without notice	Unregistered home schooler	Joined the military service	Withdrew from district sponsored alt. ed.	Moved with a migrant family	Expelled or suspended and did not return		No response
1	2	3	4	5	6	7	8	9	10	11	12	13	14	15	16
West Linn High School.....	29	2	1	17	9	0	0	1	0	0	0	0	0	28	0
Weston - McEwen High School.....	8	0	1	0	3	4	0	0	2	0	0	0	0	6	0
Westview High School.....	98	2	5	19	34	37	1	46	1	0	3	3	0	45	9
Wheeler High School.....	0	0	0	0	0	0	0	0	0	0	0	0	0	0	0
Willamette High School.....	89	0	9	17	38	25	0	10	0	0	9	0	1	69	0
Willamina High School.....	13	0	1	3	7	2	0	0	0	0	0	0	0	13	0
Wilson High School.....	59	0	0	5	15	39	0	35	5	1	0	0	0	18	0
Wilsonville High School.....	23	0	2	5	12	4	0	2	0	0	1	0	0	20	0
Winston Churchill High School.....	15	0	2	4	3	6	0	6	0	0	0	0	0	9	0
Woodburn High School.....	104	0	4	20	31	49	0	3	2	0	26	3	1	69	0
Yamhill-Carlton High School.....	19	0	1	6	12	0	0	3	4	0	0	0	1	11	0
Yoncalla High School.....	4	*	*	*	*	*	*	*	*	*	*	*	*	*	*
II. Alternative Schools															
Brown Education Center	17	1	1	3	9	3	0	6	5	0	1	0	2	3	0 A
Centennial Learning Center.....	44	0	0	3	20	21	0	2	0	0	30	0	0	12	0 A
Churchill Alternative Education	20	3	9	8	0	0	0	15	0	0	2	0	3	0	0 A
Community School.....	84	0	3	12	30	39	0	65	0	0	14	0	3	2	7 A
Fariss Street School	5	*	*	*	*	*	*	*	*	*	*	*	*	*	* A
Gateways Learning Center	4	*	*	*	*	*	*	*	*	*	*	*	*	*	* A
Helensview High School.....	23	0	2	13	8	0	0	0	0	0	0	0	0	23	0 A
Marshall High School (Deschutes)...	90	0	2	20	30	38	0	71	1	0	14	0	1	3	0 A
Opportunity Center.....	50	0	0	6	15	29	0	22	0	0	28	0	0	0	0 A
Opportunity House	18	2	4	4	7	1	0	9	0	0	8	0	0	1	0 H
PPS Alternative Programs.....	929	11	103	180	207	428	0	323	1	5	332	0	36	232	243 A
Roberts HSC/TPP	54	7	8	8	10	21	0	0	0	0	5	0	0	49	11 A
South Lane Academy.....	22	0	1	2	13	6	0	0	0	0	0	0	0	22	1 A
III. Charter Schools															
21st Century Academy	6	0	0	0	3	3	0	0	0	0	6	0	0	0	0 A
Armadillo Technical Academy	5	*	*	*	*	*	*	*	*	*	*	*	*	*	* A
Destinations Charter School	17	0	6	11	0	0	0	1	0	0	12	0	1	3	0 A
Lincoln City Career Technical High	10	0	1	3	6	0	0	0	0	0	0	0	0	10	0 A
Mc Coy Public Charter School	20	0	0	1	4	15	0	16	1	0	0	0	0	3	5 A
Molalla Alternative Options	31	0	0	5	25	1	0	2	0	0	0	0	0	29	0 A
Pioneer Youth Corps Academy	2	*	*	*	*	*	*	*	*	*	*	*	*	*	* A
Willamette Valley Community School	0	0	0	0	0	0	0	0	0	0	0	0	0	0	0 A
IV. School Districts															
Beaverton SD 48J.....	550	11	33	94	181	230	1	284	2	0	88	5	7	164	68 D

Table A3. -- Time enrolled in district, circumstance upon withdrawal, rescinded students, grades 9-12: 2000-01

School or other area	Dropouts	Time enrolled in district						Circumstance upon withdrawal						Former dropouts returning to school	
		Less than 2 weeks	2 weeks to 2 months	2 months to 1 year	1 year to 5 years	More than 5 years	No response	Left school without notice	Unregistered home schooler	Joined the military service	Withdrew from district sponsored alt. ed.	Moved with a migrant family	Expelled or suspended and did not return		No response
1	2	3	4	5	6	7	8	9	10	11	12	13	14	15	16
Grant County.....	2	*	*	*	*	*	*	*	*	*	*	*	*	*	* T
Harney County.....	11	0	0	3	7	1	0	1	0	0	0	0	0	10	0 T
Hood River County.....	24	0	0	9	6	9	0	3	2	0	1	4	2	12	4 T
Jackson County.....	622	15	60	131	227	189	0	132	8	1	224	18	4	235	10 T
Jefferson County.....	54	0	0	4	48	2	0	42	3	0	2	2	1	4	0 T
Josephine County.....	183	0	12	37	73	61	0	61	3	0	46	0	6	67	7 T
Klamath County.....	117	5	17	29	65	1	0	42	2	0	13	4	3	53	1 T
Lake County.....	2	*	*	*	*	*	*	*	*	*	*	*	*	*	* T
Lane County.....	578	24	48	121	188	197	0	154	3	2	59	2	10	348	39 T
Lincoln County.....	161	4	15	27	51	64	0	1	3	0	8	2	4	143	9 T
Linn County.....	330	29	15	40	122	124	0	31	4	0	90	2	11	192	45 T
Malheur County.....	49	3	2	12	21	11	0	8	0	0	3	0	0	38	0 T
Marion County.....	1,034	19	51	175	351	438	0	63	5	0	125	7	12	816	216 T
Morrow County.....	18	0	2	7	9	0	0	16	0	0	0	0	0	2	0 T
Multnomah County.....	2,291	52	173	424	665	977	0	744	16	7	383	5	41	1,095	307 T
Polk County.....	97	6	20	14	15	42	0	29	3	1	2	0	1	61	13 T
Sherman County.....	0	0	0	0	0	0	0	0	0	0	0	0	0	0	0 T
Tillamook County.....	49	0	2	9	37	1	0	20	1	0	1	1	0	26	15 T
Umatilla County.....	188	21	22	36	71	38	0	47	8	0	12	1	0	120	2 T
Union County.....	46	0	9	13	14	10	0	30	4	0	1	0	0	11	0 T
Wallowa County.....	1	*	*	*	*	*	*	*	*	*	*	*	*	*	* T
Wasco County.....	81	2	9	9	48	13	0	38	0	0	18	1	0	24	2 T
Washington County.....	976	12	59	176	393	335	1	324	6	0	118	13	14	501	70 T
Wheeler County.....	1	*	*	*	*	*	*	*	*	*	*	*	*	*	* T
Yamhill County.....	296	14	27	41	119	95	0	40	8	0	32	6	3	207	12 T

NOTE: Data for some schools was suppressed to maintain student confidentiality.
 SOURCE: Oregon Department of Education, Office of Student Services, Individual Early Leaver Report.

Table A4. -- Factors influencing the decision to drop out, grades 9-12: 2000-01

School or other area	Dropouts	Student				Family					School						Work		
		Frequent health problems	Does not speak English well or at all	Substance abuse	Felt peer pressure to not achieve	Pregnant or student parent	Homeless	Needed at Home care for family members	Lack of parental support for education	Dysfunctional home life	Attended 3 or more high schools	Frequent discipline referrals	Too far behind in credits to catch up	Conflicts with school personnel	Lack of appropriate alternative education opportunities	Felt unsafe at school	Could not adjust to the school setting	Working more than 15 hours a week	Obligations to support family
1	2	3	4	5	6	7	8	9	10	11	12	13	14	15	16	17	18	19	20
Oregon Statewide Totals.....	8,713	168	160	537	325	469	171	68	1,210	864	176	503	1,248	137	106	13	502	792	124
I. Schools																			
Adrian High School.....	1	*	*	*	*	*	*	*	*	*	*	*	*	*	*	*	*	*	*
Aloha High School.....	106	0	3	0	0	1	0	0	6	1	2	8	58	1	0	0	3	4	2
Alsea School.....	3	*	*	*	*	*	*	*	*	*	*	*	*	*	*	*	*	*	*
Amity High School.....	12	0	0	0	0	0	0	0	12	0	0	0	0	0	0	0	0	0	0
Arlington High School.....	0	0	0	0	0	0	0	0	0	0	0	0	0	0	0	0	0	0	0
Ashland High School.....	39	0	0	1	4	0	2	0	4	1	0	0	7	0	0	0	1	5	0
Astoria High School.....	21	0	0	1	0	0	0	0	0	0	0	3	5	0	0	1	0	9	0
Baker High School.....	16	0	0	0	0	0	0	0	0	0	0	0	0	0	0	0	0	0	0
Bandon High School.....	4	*	*	*	*	*	*	*	*	*	*	*	*	*	*	*	*	*	*
Banks High School.....	15	0	0	4	7	0	0	0	14	3	0	1	0	0	0	0	0	0	0
Beaverton High School.....	96	3	6	4	3	1	1	4	4	5	0	6	17	4	9	0	12	16	8
Bend High School.....	71	0	0	1	0	9	0	0	6	5	1	0	0	0	0	0	1	2	0
Benson High School.....	34	0	0	0	0	0	0	0	0	0	0	0	0	0	0	0	0	0	0
Bonanza School.....	1	*	*	*	*	*	*	*	*	*	*	*	*	*	*	*	*	*	*
Brookings Harbor High School.....	36	1	1	4	0	2	1	3	7	6	2	2	14	1	0	0	5	3	0
Burns High School.....	11	0	0	0	0	0	0	0	0	0	0	0	0	0	0	0	0	0	0
Burnt River School.....	0	0	0	0	0	0	0	0	0	0	0	0	0	0	0	0	0	0	0
Butte Falls High School.....	4	*	*	*	*	*	*	*	*	*	*	*	*	*	*	*	*	*	*
Camas Valley School.....	1	*	*	*	*	*	*	*	*	*	*	*	*	*	*	*	*	*	*
Canby High School.....	45	0	5	16	2	6	0	7	24	18	4	8	14	0	4	0	4	5	0
Cascade High School.....	37	2	0	7	20	0	0	1	34	3	0	2	7	0	0	0	4	0	0
Cascade Locks School.....	2	*	*	*	*	*	*	*	*	*	*	*	*	*	*	*	*	*	*
Centennial High School.....	110	2	0	0	0	1	0	0	0	0	0	3	0	0	0	0	0	0	0
Central High School.....	48	0	3	11	1	8	0	3	4	7	3	6	11	4	0	0	2	3	2
Central Linn High School.....	16	1	0	5	0	2	0	0	0	8	0	4	3	1	0	0	0	4	0
Century High School.....	65	1	1	0	37	1	0	0	1	0	0	0	10	0	42	0	24	10	0
Chiloquin High School.....	3	*	*	*	*	*	*	*	*	*	*	*	*	*	*	*	*	*	*
Clackamas High School.....	50	4	2	1	18	4	0	2	0	20	0	2	8	0	0	0	0	12	0
Clatskanie High School.....	11	0	0	0	0	0	0	0	3	0	0	1	0	0	0	0	0	0	0
Cleveland High School.....	89	0	0	0	0	0	0	0	0	0	0	3	0	0	0	0	0	0	0
Colton High School.....	2	*	*	*	*	*	*	*	*	*	*	*	*	*	*	*	*	*	*
Condon High School.....	0	0	0	0	0	0	0	0	0	0	0	0	0	0	0	0	0	0	0
Coquille High School.....	12	2	0	0	0	1	0	0	1	3	0	0	3	0	0	0	0	0	0
Corbett High School.....	2	*	*	*	*	*	*	*	*	*	*	*	*	*	*	*	*	*	*
Corvallis High School.....	38	2	0	14	5	3	1	1	14	14	0	4	17	0	0	1	12	4	0
Cottage Grove High School.....	19	0	3	2	0	0	0	0	1	0	0	1	7	0	0	0	1	0	0
Cove School.....	1	*	*	*	*	*	*	*	*	*	*	*	*	*	*	*	*	*	*
Crane Union High School.....	0	0	0	0	0	0	0	0	0	0	0	0	0	0	0	0	0	0	0
Crater High School.....	88	4	0	13	1	2	0	0	23	9	7	16	55	0	0	0	4	2	0
Crescent Valley High School.....	17	0	0	0	0	0	0	0	0	0	0	0	0	0	0	0	0	0	0
Creswell High School.....	23	0	0	6	18	2	1	0	16	3	0	8	9	1	0	0	3	3	0
Crook County High School.....	28	1	2	2	0	3	0	0	1	0	0	9	13	1	0	0	0	3	0
Crow High School.....	0	0	0	0	0	0	0	0	0	0	0	0	0	0	0	0	0	0	0
Culver High School.....	10	2	1	0	1	0	0	0	1	1	1	0	4	1	0	0	4	0	0
Dallas High School.....	40	2	0	2	0	6	2	4	10	2	0	2	25	0	1	13	0	0	0
David Douglas High School.....	89	2	9	4	3	1	1	1	13	19	0	1	19	1	0	0	6	6	0
Days Creek School.....	2	*	*	*	*	*	*	*	*	*	*	*	*	*	*	*	*	*	*
Dayton High School.....	16	0	0	2	0	3	1	0	7	7	1	1	12	1	0	0	3	2	0

Table A4. -- Factors influencing the decision to drop out, grades 9-12: 2000-01

School or other area	Dropouts	Student				Family					School						Work			
		Frequent health problems	Does not speak English well or at all	Substance abuse	Felt peer pressure to not achieve	Pregnant or student parent	Homeless	Needed at Home care for family members	Lack of parental support for education	Dysfunctional home life	Attended 3 or more high schools	Frequent discipline referrals	Too far behind in credits to catch up	Conflicts with school personnel	Lack of appropriate alternative education opportunities	Felt unsafe at school	Could not adjust to the school setting	Working more than 15 hours a week	Obligations to support family	
1	2	3	4	5	6	7	8	9	10	11	12	13	14	15	16	17	18	19		
Dayville School.....	0	0	0	0	0	0	0	0	0	0	0	0	0	0	0	0	0	0	0	0
Douglas High School.....	42	1	0	1	4	3	0	0	23	11	0	1	2	0	0	0	6	4	0	
Dufur School.....	1	*	*	*	*	*	*	*	*	*	*	*	*	*	*	*	*	*	*	*
Eagle Point High School.....	62	1	0	1	2	3	0	1	18	1	0	5	14	0	0	0	4	0	0	
Echo School.....	2	*	*	*	*	*	*	*	*	*	*	*	*	*	*	*	*	*	*	*
Eddyville School.....	2	*	*	*	*	*	*	*	*	*	*	*	*	*	*	*	*	*	*	*
Elgin High School.....	2	*	*	*	*	*	*	*	*	*	*	*	*	*	*	*	*	*	*	*
Elkton High School.....	2	*	*	*	*	*	*	*	*	*	*	*	*	*	*	*	*	*	*	*
Elmira High School.....	26	0	0	1	0	1	0	0	6	1	0	3	7	1	0	0	4	1	0	
Enterprise High School.....	0	0	0	0	0	0	0	0	0	0	0	0	0	0	0	0	0	0	0	
Estacada High School.....	30	0	2	6	5	1	0	0	7	8	0	5	11	5	5	0	6	3	0	
Falls City High School.....	7	*	*	*	*	*	*	*	*	*	*	*	*	*	*	*	*	*	*	*
Forest Grove High School.....	87	2	0	1	0	1	0	0	1	3	0	1	9	0	0	0	5	0	0	
Franklin High School.....	115	0	0	0	0	0	0	0	0	0	0	0	0	0	0	0	1	0	0	
Gaston High School.....	3	*	*	*	*	*	*	*	*	*	*	*	*	*	*	*	*	*	*	*
Gervais High School.....	17	0	0	0	0	3	0	0	2	0	0	0	0	0	0	0	3	0	0	
Gilchrist School.....	4	*	*	*	*	*	*	*	*	*	*	*	*	*	*	*	*	*	*	*
Gladstone High School.....	13	1	4	9	1	0	0	0	5	7	0	0	1	1	1	0	2	0	0	
Glencoe High School.....	48	1	0	0	0	4	0	0	30	11	1	0	11	0	0	0	0	0	0	
Glendale High School.....	6	1	0	0	0	1	0	0	4	2	0	0	3	0	0	0	2	0	0	
Glide High School.....	10	1	1	0	0	0	0	0	5	1	0	1	1	1	0	0	2	0	0	
Gold Beach High School.....	6	0	0	0	0	0	0	0	0	0	0	1	0	0	0	0	0	0	0	
Grant High School (Grant).....	2	*	*	*	*	*	*	*	*	*	*	*	*	*	*	*	*	*	*	*
Grant High School (Multnomah).....	67	0	0	0	0	1	0	0	0	0	0	0	0	0	0	0	0	0	0	
Grants Pass High School.....	89	2	0	11	20	0	0	0	29	14	0	16	26	4	1	0	36	7	0	
Gresham High School.....	83	1	0	5	1	0	0	1	1	9	2	2	6	0	3	1	8	1	0	
Harper School.....	0	0	0	0	0	0	0	0	0	0	0	0	0	0	0	0	0	0	0	
Harrisburg High School.....	8	0	0	0	0	0	0	0	0	0	0	0	0	0	0	0	0	0	0	
Helix School.....	0	0	0	0	0	0	0	0	0	0	0	0	0	0	0	0	0	0	0	
Henley High School.....	16	0	0	0	0	0	0	0	1	1	1	1	9	0	0	0	0	0	0	
Henry D Sheldon High School.....	17	1	0	2	0	0	0	0	0	3	0	0	6	1	0	0	1	0	0	
Heppner High School.....	0	0	0	0	0	0	0	0	0	0	0	0	0	0	0	0	0	0	0	
Hermiston High School.....	52	0	0	0	0	2	0	0	1	1	0	2	3	0	0	0	0	0	0	
Hidden Valley High School.....	41	1	0	6	0	1	0	0	16	14	2	4	0	0	0	1	2	0	0	
Hillsboro High School.....	46	0	4	0	1	0	0	0	25	8	0	12	19	4	2	0	11	1	0	
Hood River Valley High School.....	22	0	9	6	0	0	1	0	0	5	1	9	2	0	0	0	1	6	0	
Huntington School.....	0	0	0	0	0	0	0	0	0	0	0	0	0	0	0	0	0	0	0	
Illinois Valley High School.....	14	0	0	4	2	3	2	0	4	7	0	1	5	0	0	0	1	2	0	
Imbler High School.....	1	*	*	*	*	*	*	*	*	*	*	*	*	*	*	*	*	*	*	*
Ione School.....	0	0	0	0	0	0	0	0	0	0	0	0	0	0	0	0	0	0	0	
Jefferson High School (Marion).....	12	0	0	1	0	0	0	0	0	0	0	0	2	0	0	0	0	0	0	
Jefferson High School (Multnomah).....	66	0	0	0	0	0	0	0	0	0	0	0	0	0	0	0	0	0	0	
Jewell School.....	2	*	*	*	*	*	*	*	*	*	*	*	*	*	*	*	*	*	*	*
John C. Fremont Jr High School.....	2	*	*	*	*	*	*	*	*	*	*	*	*	*	*	*	*	*	*	*
John F Kennedy High School.....	3	*	*	*	*	*	*	*	*	*	*	*	*	*	*	*	*	*	*	*
Jordan Valley High School.....	0	0	0	0	0	0	0	0	0	0	0	0	0	0	0	0	0	0	0	
Joseph High School.....	1	*	*	*	*	*	*	*	*	*	*	*	*	*	*	*	*	*	*	*
Joseph Lane Jr High School.....	5	*	*	*	*	*	*	*	*	*	*	*	*	*	*	*	*	*	*	*
Junction City High School.....	10	1	0	1	0	3	0	0	2	2	0	2	2	0	0	0	1	0	0	
Klamath High School.....	47	1	0	1	0	4	0	1	4	1	0	11	2	0	0	0	1	0	0	

Table A4. -- Factors influencing the decision to drop out, grades 9-12: 2000-01

School or other area	Dropouts	Student				Family					School						Work			
		Frequent health problems	Does not speak English well or at all	Substance abuse	Felt peer pressure to not achieve	Pregnant or student parent	Homeless	Needed at Home care for family members	Lack of parental support for education	Dysfunctional home life	Attended 3 or more high schools	Frequent discipline referrals	Too far behind in credits to catch up	Conflicts with school personnel	Lack of appropriate alternative education opportunities	Felt unsafe at school	Could not adjust to the school setting	Working more than 15 hours a week	Obligations to support family	
1	2	3	4	5	6	7	8	9	10	11	12	13	14	15	16	17	18	19	20	
Paisley School.....	0	0	0	0	0	0	0	0	0	0	0	0	0	0	0	0	0	0	0	0
Parkrose High School.....	62	1	1	7	0	1	0	0	6	8	0	0	2	0	0	0	3	1	0	
Pendleton High School.....	61	0	1	8	6	2	1	0	5	16	0	6	1	0	0	0	11	6	1	
Perrydale School.....	2	*	*	*	*	*	*	*	*	*	*	*	*	*	*	*	*	*	*	
Philomath High School.....	22	0	0	0	0	0	0	0	0	1	0	1	0	0	0	0	1	0	0	
Phoenix High School.....	84	2	0	2	0	1	0	1	19	7	0	1	5	1	0	0	4	1	0	
Pilot Rock High School.....	3	*	*	*	*	*	*	*	*	*	*	*	*	*	*	*	*	*	*	
Pine Eagle High School.....	3	*	*	*	*	*	*	*	*	*	*	*	*	*	*	*	*	*	*	
Pleasant Hill High School.....	1	*	*	*	*	*	*	*	*	*	*	*	*	*	*	*	*	*	*	
Powers High School.....	0	0	0	0	0	0	0	0	0	0	0	0	0	0	0	0	0	0	0	
Prairie City School.....	0	0	0	0	0	0	0	0	0	0	0	0	0	0	0	0	0	0	0	
Prospect High School.....	5	*	*	*	*	*	*	*	*	*	*	*	*	*	*	*	*	*	*	
Rainier High School.....	11	0	0	0	0	1	0	0	6	0	0	4	0	2	0	0	2	0	0	
Redmond High School.....	39	0	0	0	0	7	0	0	1	0	2	1	6	0	0	0	1	0	0	
Reedsport High School.....	18	*	*	*	*	*	*	*	*	*	*	*	*	*	*	*	*	*	*	
Rex Putnam High School.....	41	0	0	0	0	0	0	0	0	0	0	0	2	0	0	0	0	29	0	
Reynolds High School.....	102	0	0	0	0	0	0	0	0	0	0	0	0	0	0	0	0	1	0	
Riddle High School.....	5	*	*	*	*	*	*	*	*	*	*	*	*	*	*	*	*	*	*	
Riverdale High School.....	1	*	*	*	*	*	*	*	*	*	*	*	*	*	*	*	*	*	*	
Riverside High School.....	18	1	1	0	0	3	0	0	1	0	0	1	10	0	0	0	2	2	0	
Rogue River High School.....	21	4	0	1	3	1	1	2	7	3	0	2	7	1	0	0	3	2	0	
Roosevelt High School.....	107	0	0	0	0	0	0	0	0	0	0	0	0	0	0	0	0	0	0	
Roseburg High School.....	63	5	0	9	6	2	4	0	13	15	4	9	6	0	0	1	7	3	0	
Sam Barlow High School.....	74	0	0	0	0	0	0	0	1	0	1	0	14	0	0	0	1	0	0	
Sandy High School.....	30	2	0	1	0	2	2	0	4	2	0	4	3	1	2	0	6	7	0	
Santiam High School.....	21	0	0	0	0	0	0	0	0	0	0	0	0	0	0	0	0	0	0	
Scappoose High School.....	17	0	0	6	0	0	1	0	2	2	0	1	2	0	0	2	0	0	0	
School Of Arts & Communication.....	6	0	0	0	0	0	0	0	2	0	0	0	0	0	0	0	2	0	0	
School Of Science & Technology.....	2	*	*	*	*	*	*	*	*	*	*	*	*	*	*	*	*	*	*	
Scio High School.....	1	*	*	*	*	*	*	*	*	*	*	*	*	*	*	*	*	*	*	
Seaside High School.....	24	2	1	4	2	3	3	0	7	2	0	7	10	0	0	0	6	5	0	
Sheridan High School.....	6	*	*	*	*	*	*	*	*	*	*	*	*	*	*	*	*	*	*	
Sherman High School.....	0	0	0	0	0	0	0	0	0	0	0	0	0	0	0	0	0	0	0	
Sherwood High School.....	28	0	0	0	0	0	0	0	0	0	0	0	0	0	0	0	0	0	0	
Silverton High School.....	77	0	0	1	0	4	0	0	2	3	0	1	13	0	0	0	0	7	0	
Sisters High School.....	6	0	0	1	1	1	0	0	0	2	0	1	0	0	1	0	1	1	0	
Siuslaw High School.....	26	0	0	1	4	1	0	0	2	5	1	0	0	0	0	0	5	0	0	
South Albany High School.....	99	2	0	2	2	6	0	2	8	3	0	14	18	3	1	0	10	1	1	
South Eugene High School.....	35	0	0	0	0	0	0	0	0	0	0	0	0	0	0	0	0	0	0	
South Medford High School.....	175	2	9	5	0	21	5	2	7	5	2	8	5	2	0	0	2	21	2	
South Salem High School.....	107	0	0	0	0	0	0	0	0	0	0	0	0	0	0	0	0	0	0	
South Umpqua High School.....	43	1	0	9	1	4	0	0	30	21	2	17	17	8	2	0	0	2	0	
Southridge High School.....	58	0	1	5	4	0	0	0	6	6	0	3	6	2	1	0	4	6	2	
Sprague High School.....	89	0	0	0	0	0	0	0	0	0	0	0	0	0	0	0	0	0	0	
Spray School.....	0	0	0	0	0	0	0	0	0	0	0	0	0	0	0	0	0	0	0	
Springfield High School.....	78	2	10	5	0	2	3	0	34	5	10	6	12	0	2	0	0	11	0	
St Helens High School.....	43	0	0	4	0	6	2	0	11	10	1	0	6	1	0	0	1	10	1	
St Paul High School.....	3	*	*	*	*	*	*	*	*	*	*	*	*	*	*	*	*	*	*	
Stanfield Secondary School.....	1	*	*	*	*	*	*	*	*	*	*	*	*	*	*	*	*	*	*	
Stayton High School.....	67	0	0	3	6	0	0	0	7	4	2	3	11	3	0	0	9	4	0	

Table A4. -- Factors influencing the decision to drop out, grades 9-12: 2000-01

School or other area	Dropouts	Student				Family					School						Work		
		Frequent health problems	Does not speak English well or at all	Substance abuse	Felt peer pressure to not achieve	Pregnant or student parent	Homeless	Needed at Home care for family members	Lack of parental support for education	Dysfunctional home life	Attended 3 or more high schools	Frequent discipline referrals	Too far behind in credits to catch up	Conflicts with school personnel	Lack of appropriate alternative education opportunities	Felt unsafe at school	Could not adjust to the school setting	Working more than 15 hours a week	Obligations to support family
1	2	3	4	5	6	7	8	9	10	11	12	13	14	15	16	17	18	19	20
Sunset High School.....	100	0	7	16	2	5	0	0	18	21	3	20	30	11	1	0	5	18	2
Sutherlin High School.....	16	0	0	3	0	4	0	0	8	10	0	1	4	0	0	0	6	1	0
Sweet Home High School.....	49	0	0	0	0	2	0	0	1	1	0	0	0	0	0	0	0	0	0
Taft High School.....	66	0	2	1	0	4	0	0	5	3	1	6	29	0	0	2	4	5	1
The Dalles High School.....	47	5	7	19	10	1	0	0	15	12	0	3	6	0	1	0	9	7	0
Thurston High School.....	72	1	0	0	0	2	0	1	2	1	2	1	11	0	1	0	1	1	0
Tigard High School.....	59	2	6	10	0	4	0	3	34	3	1	19	0	0	0	0	0	4	0
Tillamook High School.....	43	0	2	0	0	10	3	0	1	1	0	1	11	0	0	0	1	1	0
Toledo High School.....	26	0	0	0	0	0	0	0	0	0	0	0	0	0	0	0	0	1	0
Triangle Lake School.....	0	0	0	0	0	0	0	0	0	0	0	0	0	0	0	0	0	0	0
Tualatin High School.....	75	2	6	2	2	4	0	0	9	10	10	9	15	1	0	0	3	33	0
Ukiah High School.....	3	*	*	*	*	*	*	*	*	*	*	*	*	*	*	*	*	*	*
Umatilla High School.....	20	1	0	1	0	1	0	0	1	0	0	1	1	0	0	0	1	1	0
Union High School.....	0	0	0	0	0	0	0	0	0	0	0	0	0	0	0	0	0	0	0
Vale High School.....	10	0	0	1	0	1	1	0	4	1	0	1	1	0	0	0	1	0	0
Vernonia High School.....	14	0	0	3	0	0	0	0	0	3	1	1	4	0	0	0	0	1	0
Wahatnoka High School.....	28	3	2	8	11	4	1	1	15	8	0	6	14	3	3	0	14	0	0
Waldport High School.....	14	1	0	0	0	1	0	0	6	2	0	2	4	2	0	0	2	0	0
Wallowa High School.....	0	0	0	0	0	0	0	0	0	0	0	0	0	0	0	0	0	0	0
Warrenton High School.....	16	0	0	0	0	2	1	0	2	1	0	2	2	1	0	0	0	0	0
Wasco County High School.....	5	*	*	*	*	*	*	*	*	*	*	*	*	*	*	*	*	*	*
West Albany High School.....	54	2	2	4	0	5	1	0	8	9	2	3	27	1	0	1	3	8	0
West Linn High School.....	29	1	0	3	0	0	0	0	0	3	0	2	13	2	0	0	8	0	0
Weston - McEwen High School.....	8	0	0	0	0	1	0	0	0	1	0	0	2	0	0	0	0	0	1
Westview High School.....	98	0	1	2	2	2	2	0	1	0	0	2	3	1	0	0	2	4	1
Wheeler High School.....	0	0	0	0	0	0	0	0	0	0	0	0	0	0	0	0	0	0	0
Willamette High School.....	89	0	0	0	2	12	1	0	9	8	0	3	7	1	0	0	0	10	0
Willamina High School.....	13	2	0	1	0	4	0	0	6	2	0	3	10	0	0	0	0	1	0
Wilson High School.....	59	0	0	0	0	1	0	0	0	0	0	0	0	0	0	0	0	0	0
Wilsonville High School.....	23	1	0	0	1	2	0	0	1	0	3	2	5	0	0	0	5	5	0
Winston Churchill High School.....	15	0	1	0	0	2	0	0	0	4	0	3	0	0	0	0	3	3	0
Woodburn High School.....	104	4	3	8	1	16	0	0	18	22	1	0	23	1	0	0	7	23	0
Yamhill-Carlton High School.....	19	6	0	1	0	2	0	1	3	4	0	4	0	1	0	0	1	3	0
Yoncalla High School.....	4	*	*	*	*	*	*	*	*	*	*	*	*	*	*	*	*	*	*
II. Alternative Schools																			
Brown Education Center	17	1	0	1	1	3	0	2	4	2	1	0	6	0	1	0	0	5	0
Centennial Learning Center.....	44	4	0	27	0	7	3	0	20	20	0	4	10	0	1	0	1	5	0
Churchill Alternative Education Community School.....	20	0	0	0	0	0	0	0	0	0	0	0	0	0	0	0	0	0	0
Community School.....	84	2	4	0	3	32	1	1	14	13	6	0	10	0	1	0	1	12	4
Fariss Street School	5	*	*	*	*	*	*	*	*	*	*	*	*	*	*	*	*	*	*
Gateways Learning Center	4	*	*	*	*	*	*	*	*	*	*	*	*	*	*	*	*	*	*
Helensview High School.....	23	2	2	2	0	0	2	0	4	2	0	1	0	1	0	0	1	3	0
Marshall High School (Deschutes)...	90	0	0	2	3	2	4	1	26	12	1	3	14	0	0	0	2	11	0
Opportunity Center.....	50	6	0	0	3	4	3	0	1	2	5	1	0	0	0	0	3	5	4
Opportunity House	18	1	0	0	0	0	0	0	12	0	5	2	11	0	0	0	0	6	0
PPS Alternative Programs.....	929	19	1	57	1	69	56	4	90	55	14	27	30	2	1	0	19	147	76
Roberts HSC/TPP	53	0	0	0	0	0	0	0	0	0	0	0	0	0	0	0	0	6	0
South Lane Academy.....	22	0	0	1	0	0	0	0	2	2	0	0	2	0	0	0	0	2	0

Table A4. -- Factors influencing the decision to drop out, grades 9-12: 2000-01

School or other area	Dropouts	Student				Family					School						Work		
		Frequent health problems	Does not speak English well or at all	Substance abuse	Felt peer pressure to not achieve	Pregnant or student parent	Homeless	Needed at Home care for family members	Lack of parental support for education	Dysfunctional home life	Attended 3 or more high schools	Frequent discipline referrals	Too far behind in credits to catch up	Conflicts with school personnel	Lack of appropriate alternative education opportunities	Felt unsafe at school	Could not adjust to the school setting	Working more than 15 hours a week	Obligations to support family
1	2	3	4	5	6	7	8	9	10	11	12	13	14	15	16	17	18	19	20
Hood River County.....	24	0	9	6	0	0	1	0	2	7	1	9	4	0	0	0	1	6	0
Jackson County.....	622	14	11	30	12	36	12	10	103	44	16	47	149	10	0	0	50	53	2
Jefferson County.....	54	2	1	2	1	0	0	0	2	3	1	2	6	2	0	0	4	0	0
Josephine County.....	183	3	0	21	22	5	3	0	49	36	2	21	36	4	1	1	39	9	0
Klamath County.....	117	2	1	4	0	10	1	2	12	9	7	24	22	3	1	0	1	2	0
Lake County.....	2	*	*	*	*	*	*	*	*	*	*	*	*	*	*	*	*	*	*
Lane County.....	578	13	14	29	32	34	11	2	92	49	22	36	77	8	3	0	26	44	4
Lincoln County.....	162	3	6	2	0	13	1	2	19	13	2	8	42	2	0	2	6	28	4
Linn County.....	330	5	3	13	2	19	1	2	25	29	2	22	52	5	1	1	8	23	1
Malheur County.....	49	0	3	1	4	2	1	1	6	4	2	3	10	2	0	0	11	7	0
Marion County.....	1035	6	3	21	27	24	0	2	66	32	3	7	57	5	0	0	20	46	0
Morrow County.....	18	1	1	0	0	3	0	0	1	0	0	1	10	0	0	0	2	2	0
Multnomah County.....	2291	35	13	114	6	86	69	6	139	121	17	48	97	6	6	1	40	175	85
Polk County.....	97	4	3	15	4	18	3	9	20	12	6	9	39	4	0	1	16	3	2
Sherman County.....	0	0	0	0	0	0	0	0	0	0	0	0	0	0	0	0	0	0	0
Tillamook County.....	49	0	2	0	0	10	3	0	3	1	0	2	11	0	0	0	1	1	0
Umatilla County.....	188	1	2	14	7	12	5	0	11	36	3	10	20	3	0	0	24	12	3
Union County.....	46	2	3	6	6	1	3	0	7	7	7	2	5	3	7	1	4	5	0
Wallowa County.....	1	*	*	*	*	*	*	*	*	*	*	*	*	*	*	*	*	*	*
Wasco County.....	81	8	9	27	21	6	1	1	31	21	0	10	21	3	4	0	23	7	0
Washington County.....	976	13	39	44	61	55	4	8	165	84	23	81	188	24	56	0	67	115	19
Wheeler County.....	1	*	*	*	*	*	*	*	*	*	*	*	*	*	*	*	*	*	*
Yamhill County.....	296	17	10	34	30	24	20	4	116	65	13	28	104	13	10	1	17	54	0

Note: Not every dropout had factors reported, and more than factor could be reported for any dropout. Detailed data is suppressed in schools with small numbers of dropouts to protect student confidentiality.
 SOURCE: Oregon Department of Education, Office of Student Services, Individual Early Leaver Report.

Table A5. -- Factors influencing the decision to drop out, by sex, race/ethnicity, and grade, grades 9-12: 2000-01

School or other area	Dropouts	Student				Family					School					Work			
		Frequent health problems	Does not speak English well or at all	Substance abuse	Felt peer pressure to not achieve	Pregnant or student parent	Homeless	Needed at home care for family members	Lack of parental support for education	Dysfunctional home life	Attended 3 or more high schools	Frequent discipline referrals	Too far behind in credits to catch up	Conflicts with school personnel	Lack of appropriate alternative education opportunities	Felt unsafe at school	Could not adjust to the school setting	Working more than 15 hours a week	Obligations to support family
1	2	3	4	5	6	7	8	9	10	11	12	13	14	15	16	17	18	19	20
Oregon Statewide Totals.....	8,713	168	160	537	325	469	171	68	1,210	864	176	503	1,248	137	106	13	502	792	124
Male	4,760	58	100	342	182	56	89	18	643	441	88	395	756	91	71	7	284	453	62
Female	3,953	110	60	195	143	413	82	50	567	423	88	108	492	46	35	6	218	339	62
White	6,099	143	9	448	238	298	146	34	921	684	132	387	978	113	66	9	391	506	61
Black	452	4	1	9	5	31	9	2	22	22	10	24	22	6	1	1	19	18	7
Hispanic	1,486	13	144	53	58	114	8	27	210	110	22	64	187	12	33	2	63	212	52
Asian/Pacific Islander	294	2	4	4	10	7	0	2	19	11	5	6	20	2	5	1	12	28	2
American Indian/Alaskan Native	268	4	0	22	9	16	8	1	35	30	5	19	30	4	1	0	15	18	2
Race unknown	114	2	2	1	5	3	0	2	3	7	2	3	11	0	0	0	2	10	0
Grade 9	1,393	19	32	67	45	55	31	11	193	134	12	80	70	13	15	1	81	67	37
Grade10	1,930	50	52	128	93	103	36	13	334	232	37	137	230	33	23	3	147	123	27
Grade11	2,253	48	44	152	93	119	48	21	332	255	59	138	367	40	32	6	135	208	36
Grade12	2,255	44	27	162	82	159	42	22	280	189	49	112	469	41	34	3	117	295	20
Grade 13	862	7	5	26	12	30	13	1	66	51	18	36	107	9	2	0	22	93	4
Unclassified	20	0	0	2	0	3	1	0	5	3	1	0	5	1	0	0	0	6	0

Note: Not every dropout had factors reported, and more than factor could be reported for any dropout.

SOURCE: Oregon Department of Education, Office of Student Services, Individual Early Leaver Report.

Table A6. -- Number of non-dropouts and dropouts, dropout rates, grades 7-8: 2000-01

School or other area	October 1, 2000 Membership	Non-dropout leavers				Dropouts			Dropout rate (%)	Former dropouts returning to school
		Total	Sent to child-caring facility ¹	Deceased	Registered home schooler	Total	Withdrew during school year	Did not return from summer break		
1	2	3	4	5	6	7	8	9	10	11
Oregon Statewide Totals.....	84,730	144	34	10	97	704	477	227	0.83	35
Agnes Stewart Middle School.....	489	4	2	0	2	3	2	1	0.61	0
Alice Ott Middle School.....	589	0	0	0	0	1	1	0	0.17	0
Amity Middle School.....	143	0	0	0	0	0	0	0	0.00	1
Armand Larive Middle School.....	286	0	0	0	0	7	2	5	2.45	0
Arts, Sciences, And Technology.....	28	0	0	0	0	3	0	3	10.71	0
Ashland Middle School.....	533	0	0	0	0	2	2	0	0.38	0
Astoria Middle School.....	336	1	0	1	0	2	0	2	0.60	0
Athena-Weston Middle School.....	109	2	0	0	2	1	1	0	0.92	0
Baker Middle School.....	372	0	0	0	0	2	1	1	0.54	0
Banks Jr High School.....	199	1	1	0	0	0	0	0	0.00	0
Beaumont Middle School.....	411	0	0	0	0	5	2	3	1.22	0
Binnsmead Middle School.....	439	2	0	0	2	2	2	0	0.46	0
Boring Middle School.....	253	1	0	0	1	0	0	0	0.00	0
Briggs Middle School.....	286	0	0	0	0	2	2	0	0.70	0
Brixner Jr High School.....	459	1	0	0	1	1	1	0	0.22	0
Broadway Middle School.....	273	0	0	0	0	6	4	2	2.20	0
Calapooia Middle School.....	473	1	1	0	0	1	1	0	0.21	0
Cascade Jr High School.....	326	0	0	0	0	2	1	1	0.61	0
Cascade Middle School.....	432	3	0	0	3	0	0	0	0.00	0
Cascade Middle School.....	323	0	0	0	0	2	1	1	0.62	0
Cedar Park Middle School.....	652	2	0	0	2	1	1	0	0.15	0
Centennial Middle School.....	950	0	0	0	0	11	11	0	1.16	0
Central Middle School.....	294	0	0	0	0	4	3	1	1.36	0
Chapman Elem School.....	128	0	0	0	0	1	0	1	0.78	0
Chehalem Valley Middle School.....	381	0	0	0	0	2	2	0	0.52	0
Cheldelin Middle.....	477	0	0	0	0	2	2	0	0.42	1
Chenowith Middle School.....	156	0	0	0	0	1	1	0	0.64	0
Chiloquin High School.....	128	0	0	0	0	1	0	1	0.78	0
Clara Brownell Middle School.....	138	2	0	1	1	6	5	1	4.35	0
Clatskanie High School.....	163	0	0	0	0	1	1	0	0.61	0
Clear Creek Middle School.....	481	2	0	0	2	5	2	3	1.04	0

Table A6. -- Number of non-dropouts and dropouts, dropout rates, grades 7-8: 2000-01

School or other area	October 1, 2000 Membership	Non-dropout leavers				Dropouts			Dropout rate (%)	Former dropouts returning to school
		Total	Sent to child- caring facility ¹	Deceased	Registered home schooler	Total	Withdrew during school year	Did not return from summer break		
1	2	3	4	5	6	7	8	9	10	11
Coffenberry Middle School.....	261	0	0	0	0	2	1	1	0.77	0
Colin Kelly Middle School.....	345	1	0	0	1	2	2	0	0.58	0
Columbia Middle School.....	243	1	0	0	1	7	4	3	2.88	0
Conestoga Middle School.....	676	3	0	0	3	4	3	1	0.59	0
Creswell Middle School.....	193	0	0	0	0	2	1	1	1.04	0
Crook County Middle School.....	496	0	0	0	0	6	6	0	1.21	0
Crossler Middle School.....	541	0	0	0	0	4	4	0	0.74	1
Dayton Jr High School.....	156	0	0	0	0	1	0	1	0.64	0
Dexter D McCarty Middle School....	428	1	0	0	1	3	1	2	0.70	0
Duniway Middle School.....	379	0	0	0	0	0	0	0	0.00	1
Eagle Point Jr High School.....	548	0	0	0	0	6	6	0	1.09	0
Estacada Jr High School.....	365	0	0	0	0	7	3	4	1.92	0
Evergreen Jr High School.....	775	3	1	2	0	4	2	2	0.52	0
F Patton Middle School.....	472	1	0	0	1	5	4	1	1.06	1
Fernwood Middle School.....	403	1	0	0	1	2	2	0	0.50	0
Five Oaks Middle School.....	684	3	0	0	3	8	6	2	1.17	2
Fleming Middle School.....	367	0	0	0	0	7	0	7	1.91	0
Floyd Light Middle School.....	707	0	0	0	0	12	4	8	1.70	0
Franklin Elementary School.....	56	0	0	0	0	0	0	0	0.00	2
George Middle School.....	337	0	0	0	0	11	7	4	3.26	0
Glide Middle School.....	166	0	0	0	0	1	1	0	0.60	0
Gordon Russell Middle School.....	511	0	0	0	0	7	6	1	1.37	0
Gray Middle School.....	337	2	1	0	1	4	4	0	1.19	0
Gregory Heights Middle School.....	532	1	1	0	0	9	4	5	1.69	0
Hamlin Middle School.....	370	0	0	0	0	2	2	0	0.54	0
Hanby Middle School.....	211	2	0	1	1	0	0	0	0.00	0
Harbor Lights Middle School.....	143	1	0	1	0	0	0	0	0.00	0
Harriet Tubman Middle School.....	351	0	0	0	0	7	2	5	1.99	0
Hauton B Lee Middle School.....	474	0	0	0	0	10	7	3	2.11	0
Hazelbrook Middle School.....	516	0	0	0	0	3	1	2	0.58	0
Hedrick Middle School.....	981	4	0	0	4	5	1	4	0.51	0
Henley Middle School.....	389	0	0	0	0	18	3	15	4.63	0

Table A6. -- Number of non-dropouts and dropouts, dropout rates, grades 7-8: 2000-01

School or other area	October 1, 2000 Membership	Non-dropout leavers				Dropouts			Dropout rate (%)	Former dropouts returning to school
		Total	Sent to child-caring facility ¹	Deceased	Registered home schooler	Total	Withdrew during school year	Did not return from summer break		
1	2	3	4	5	6	7	8	9	10	11
Heppner High School.....	70	1	0	0	1	0	0	0	0.00	0
High Desert Middle School.....	566	0	0	0	0	1	0	1	0.18	0
Highland Park Middle School.....	703	1	0	0	1	0	0	0	0.00	0
Highland View Middle.....	376	0	0	0	0	1	0	1	0.27	2
Hood River Middle School.....	288	0	0	0	0	2	2	0	0.69	0
Hosford Middle School.....	299	1	0	0	1	0	0	0	0.00	0
Houck Middle School.....	632	0	0	0	0	11	11	0	1.74	0
Hugh Hartman Middle School.....	423	0	0	0	0	1	1	0	0.24	0
Imbler High School.....	48	3	0	0	3	0	0	0	0.00	0
Inza R. Wood Middle School.....	383	0	0	0	0	12	2	10	3.13	0
J B Thomas Jr High School.....	514	0	0	0	0	3	3	0	0.58	0
J W Poynter Jr High School.....	640	3	0	0	3	6	6	0	0.94	0
Jackson Middle School.....	520	0	0	0	0	8	5	3	1.54	0
James Madison Middle School.....	330	2	0	0	2	0	0	0	0.00	0
James Monroe Middle School.....	419	0	0	0	0	1	1	0	0.24	0
Jefferson County Middle School.....	507	0	0	0	0	6	0	6	1.18	0
Jewell School.....	26	1	0	0	1	1	1	0	3.85	0
John C. Fremont Jr High School.....	543	1	0	1	0	0	0	0	0.00	0
John F Kennedy Middle School.....	386	2	1	0	1	0	0	0	0.00	0
Joseph Lane Jr High School.....	530	0	0	0	0	3	3	0	0.57	0
Judson Middle School.....	604	1	0	0	1	4	4	0	0.66	1
Kellogg Middle School.....	405	0	0	0	0	5	4	1	1.23	0
La Creole Jr High School.....	528	0	0	0	0	2	2	0	0.38	0
La Grande Middle School.....	399	2	0	0	2	6	1	5	1.50	0
La Pine Middle School.....	258	2	0	0	2	1	1	0	0.39	0
Lake Oswego Jr High School.....	596	1	0	0	1	3	0	3	0.50	1
Lane Middle School.....	422	2	1	0	1	11	8	3	2.61	0
Lebanon Middle School.....	336	0	0	0	0	3	1	2	0.89	1
Leslie Middle School.....	578	0	0	0	0	4	4	0	0.69	0
Lincoln Middle School.....	386	0	0	0	0	2	2	0	0.52	0
Lincoln Savage Middle School.....	338	1	0	0	1	5	2	3	1.48	0
Lorna Byrne Middle School.....	256	0	0	0	0	5	2	3	1.95	0

Table A6. -- Number of non-dropouts and dropouts, dropout rates, grades 7-8: 2000-01

School or other area	October 1, 2000 Membership	Non-dropout leavers				Dropouts			Dropout rate (%)	Former dropouts returning to school
		Total	Sent to child-caring facility ¹	Deceased	Registered home schooler	Total	Withdrew during school year	Did not return from summer break		
1	2	3	4	5	6	7	8	9	10	11
Lost River High School.....	120	0	0	0	0	2	2	0	1.67	0
Mark Twain Elem School.....	302	0	0	0	0	7	6	1	2.32	0
McLoughlin Jr High School.....	971	1	0	0	1	18	8	10	1.85	0
McLoughlin Jr High School.....	478	0	0	0	0	2	2	0	0.42	0
Meadow Park Middle School.....	515	1	0	0	1	0	0	0	0.00	0
Memorial Middle School.....	350	0	0	0	0	1	1	0	0.29	2
Millicoma Middle School.....	326	1	1	0	0	3	3	0	0.92	0
Milwaukie Jr High School.....	440	0	0	0	0	7	0	7	1.59	0
Mohawk High School.....	51	1	0	0	1	0	0	0	0.00	0
Molalla Grade School.....	451	0	0	0	0	2	1	1	0.44	0
Monroe Middle School.....	70	0	0	0	0	1	0	1	1.43	0
Mt Tabor Middle School.....	446	2	0	0	2	0	0	0	0.00	0
Myrtle Point High School.....	78	1	1	0	0	2	2	0	2.56	0
Neah-Kah-Nie Jr-Sr High School.....	129	0	0	0	0	2	2	0	1.55	0
Neil Armstrong Middle School.....	770	0	0	0	0	13	11	2	1.69	0
Newport Middle School.....	319	0	0	0	0	2	1	1	0.63	0
North Albany Middle School.....	382	1	0	0	1	0	0	0	0.00	5
North Middle School.....	417	0	0	0	0	2	2	0	0.48	0
Nyssa Middle School.....	172	5	1	0	4	10	4	6	5.81	0
Oaklea Middle School.....	302	0	0	0	0	5	3	2	1.66	0
Obsidian Middle School.....	519	1	0	0	1	2	2	0	0.39	0
Ockley Green Middle School.....	268	0	0	0	0	10	8	2	3.73	0
Ogden Middle School.....	592	2	0	0	2	1	1	0	0.17	0
Parkrose Middle School.....	543	2	0	1	1	11	10	1	2.03	0
Parrish Middle School.....	378	0	0	0	0	1	1	0	0.26	1
Paul R Ackerman Middle School.....	738	0	0	0	0	4	4	0	0.54	0
Philomath Middle School.....	306	0	0	0	0	0	0	0	0.00	1
Pilot Butte Middle School.....	348	0	0	0	0	1	1	0	0.29	0
Ponderosa Middle School.....	483	2	0	0	2	8	5	3	1.66	0
Portsmouth Middle School.....	258	0	0	0	0	2	2	0	0.78	0
PPS Alternative Programs.....	594*	8	3	1	1	71	54	17	11.95	0

Table A6. -- Number of non-dropouts and dropouts, dropout rates, grades 7-8: 2000-01

School or other area	October 1, 2000 Membership	Non-dropout leavers				Dropouts			Dropout rate (%)	Former dropouts returning to school
		Total	Sent to child-caring facility ¹	Deceased	Registered home schooler	Total	Withdrew during school year	Did not return from summer break		
1	2	3	4	5	6	7	8	9	10	11
Rainier Middle.....	213	0	0	0	0	6	2	4	2.82	0
Raymond A Brown Jr High.....	765	2	1	0	1	3	1	2	0.39	0
Renne Middle School.....	361	1	0	0	1	3	3	0	0.83	0
Reynolds Middle School.....	522	1	0	0	1	6	6	0	1.15	2
Rosemont Ridge Middle School	435	3	0	0	3	2	1	1	0.46	0
Sandstone Middle School.....	341	0	0	0	0	7	5	2	2.05	0
Scenic Middle School.....	524	0	0	0	0	4	3	1	0.76	0
Sellwood Middle School.....	371	0	0	0	0	2	2	0	0.54	0
Shasta Middle School.....	325	0	0	0	0	1	1	0	0.31	0
Sherwood Intermediate.....	412	0	0	0	0	2	1	1	0.49	0
Siuslaw Middle School.....	277	1	0	0	1	0	0	0	0.00	0
Sky View Middle School	435	4	2	0	2	2	2	0	0.46	0
South Middle School.....	433	0	0	0	0	3	2	1	0.69	0
Spencer Butte Middle School.....	293	1	1	0	0	0	0	0	0.00	0
Springfield Middle School.....	225	0	0	0	0	4	4	0	1.78	0
St Helens Jr High School.....	517	0	0	0	0	4	4	0	0.77	0
Stayton Middle School.....	252	1	0	0	1	1	1	0	0.40	1
Stephens Middle School.....	666	0	0	0	0	11	11	0	1.65	2
Stoller Middle School	576	1	0	0	1	1	1	0	0.17	0
Sunridge Middle School.....	564	14	14	0	0	2	1	1	0.35	0
Sunrise Jr High School.....	815	0	0	0	0	2	1	1	0.25	0
Sunset Middle School.....	332	0	0	0	0	5	4	1	1.51	0
Sutherlin Middle School.....	250	0	0	0	0	4	3	1	1.60	0
Sweet Home Jr High School.....	371	0	0	0	0	1	0	1	0.27	3
Talent Middle School.....	436	0	0	0	0	2	2	0	0.46	0
Talmadge Middle School.....	442	0	0	0	0	3	2	1	0.68	0
The Dalles Middle School.....	307	1	1	0	0	4	4	0	1.30	0
Theodore Roosevelt Middle.....	460	1	0	0	1	0	0	0	0.00	0
Thomas Fowler Middle School.....	668	2	0	0	2	1	1	0	0.15	0
Thomas Jefferson Middle School.....	308	0	0	0	0	2	2	0	0.65	0
Thora B. Gardiner Middle School....	509	0	0	0	0	11	8	3	2.16	0
Thurston Middle School.....	308	2	0	1	1	1	1	0	0.32	0

Table A6. -- Number of non-dropouts and dropouts, dropout rates, grades 7-8: 2000-01

School or other area	October 1, 2000 Membership	Non-dropout leavers				Dropouts			Dropout rate (%)	Former dropouts returning to school
		Total	Sent to child- caring facility ¹	Deceased	Registered home schooler	Total	Withdrew during school year	Did not return from summer break		
1	2	3	4	5	6	7	8	9	10	11
Tillamook Jr High School.....	338	0	0	0	0	1	0	1	0.30	0
W L Kraxberger Middle School.....	383	0	0	0	0	2	2	0	0.52	0
Waldo Middle School.....	507	0	0	0	0	8	8	0	1.58	0
Waldport Middle School.....	143	2	0	0	2	0	0	0	0.00	0
Walker Middle School.....	557	0	0	0	0	6	6	0	1.08	0
Walt Morey Middle School.....	402	0	0	0	0	2	2	0	0.50	0
Wasco County High School.....	53	1	0	0	1	1	1	0	1.89	0
West Orient Elem School.....	200	2	0	0	2	0	0	0	0.00	0
West Sylvan Middle School.....	592	2	0	0	2	6	4	2	1.01	0
Western View Middle.....	288	0	0	0	0	0	0	0	0.00	2
Whitaker Middle.....	443	0	0	0	0	9	7	2	2.03	0
Whiteaker Middle School.....	858	0	0	0	0	12	12	0	1.40	1
Whitford Middle School.....	580	1	0	0	1	4	4	0	0.69	1
Wilbur D Rowe Jr High School.....	633	0	0	0	0	6	6	0	0.95	0
Willamette Valley Community School	14	0	0	0	0	1	1	0	7.14	0
Winston Middle School.....	280	3	0	0	3	1	1	0	0.36	0
Wy'east Middle School.....	282	0	0	0	0	12	4	8	4.26	0
No Leavers (177 schools)	14,986									

* Net enrollment

(1) Mental health program, juvenile detention facility, substance abuse program, or certified shelter care program.

SOURCE: Oregon Department of Education, Office of Student Services, Individual Early Leaver Report; School Finance and Data Analysis, Student Membership report and Quarterly ADM report.

Table A7 - Dropout rates (%) by race/ethnicity, grades 9-12: 1991-92 to 2000-01

	1991-92	1992-93	1993-94	1994-95	1995-96	1996-97	1997-98	1998-99	1999-00	2000-01
1	2	3	4	5	6	7	8	9	10	11
Oregon	5.8	5.7	6.6	7.4	7.2	6.7	6.9	6.6	6.3	5.3
White	5.2	5.2	6.0	6.7	6.7	5.9	6.0	5.7	5.5	4.5
Black	12.4	8.6	9.6	11.6	13.0	12.1	10.8	11.1	11.4	11.0
Hispanic	12.5	14.0	16.2	17.9	16.5	15.7	16.4	14.9	13.3	11.3
Asian/Pacific Islander	3.9	3.7	5.2	5.6	5.4	5.9	5.9	5.6	5.3	4.4
American Indian/Alaskan Native	9.0	9.2	8.3	11.1	11.1	9.4	10.2	11.2	9.9	8.9

NOTE: Beginning in 1996-97, GED recipients were not counted as dropouts.

SOURCE: Oregon Department of Education, Office of Student Services, Individual Early Leaver Report.