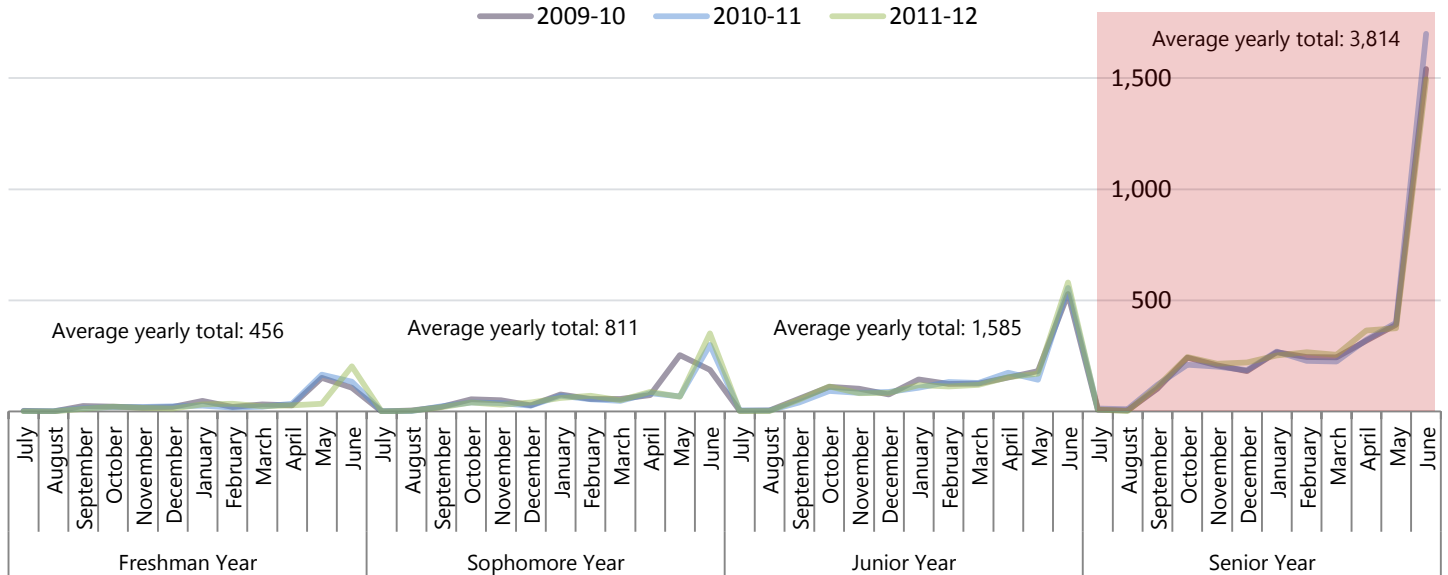


Fourth-year Non-Completers

Of Oregon’s non-completing, non-continuing students in the last three cohorts, a majority (57%) were last enrolled during their fourth year of high school.¹ Most of these students remained enrolled all the way through the end of the school year, before leaving without a credential.

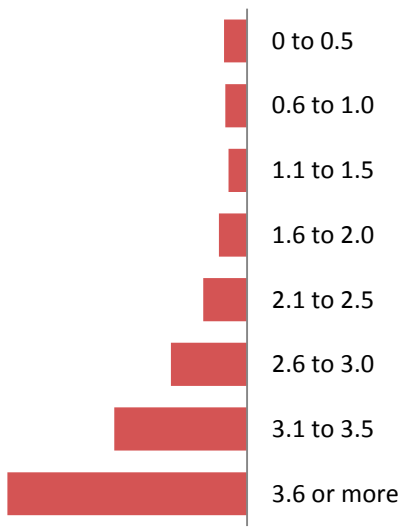
Non-Completing Students by Month of Last Enrollment

2009-10, 2010-11, and 2011-12 Four-year Cohorts



ADM Accrued over Four Years of High School²

Fourth-year non-completers in the 2010-11 and 2011-12 Cohorts

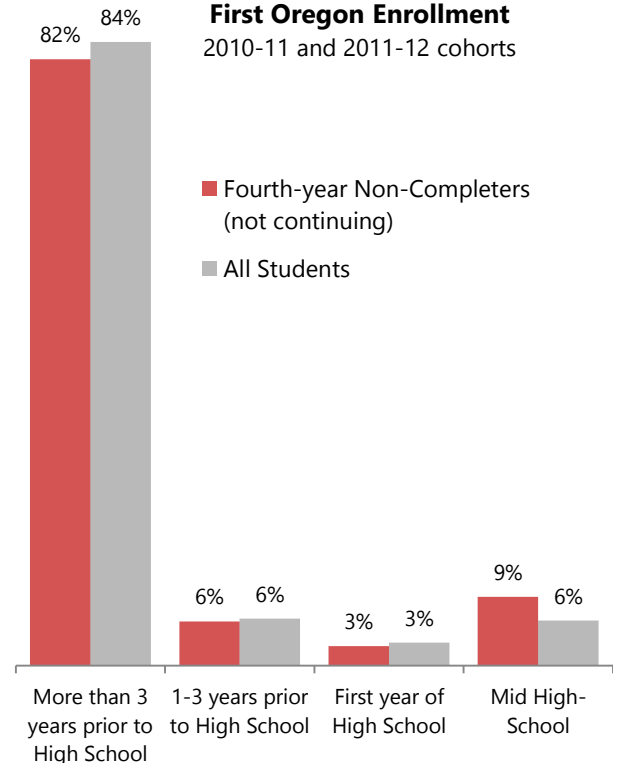


Fourth-year non-completers were more likely to be transfers into the cohort than the average student was. Most of these non-completers, however, like the cohort in general, were long-time Oregon students, having enrolled in Oregon public education for the first time more than three years before entering high school.

64% of the fourth-year non-completers had accrued the equivalent of more than 3 years of high school enrollment before leaving without a credential during their fourth year of high school.

First Oregon Enrollment

2010-11 and 2011-12 cohorts



¹ Based on years since the student’s first high school enrollment. Total number of years of high school education completed is not known for all students.

² One year of full time enrollment is equivalent to 1.0 ADM. Lower ADM amounts indicate that the student was enrolled less than full-time, or that the student had inconsistent enrollment during high school.