

Wildfire Funding in Oregon 12/18 Update at WPAC



Wildfire Funding Overview

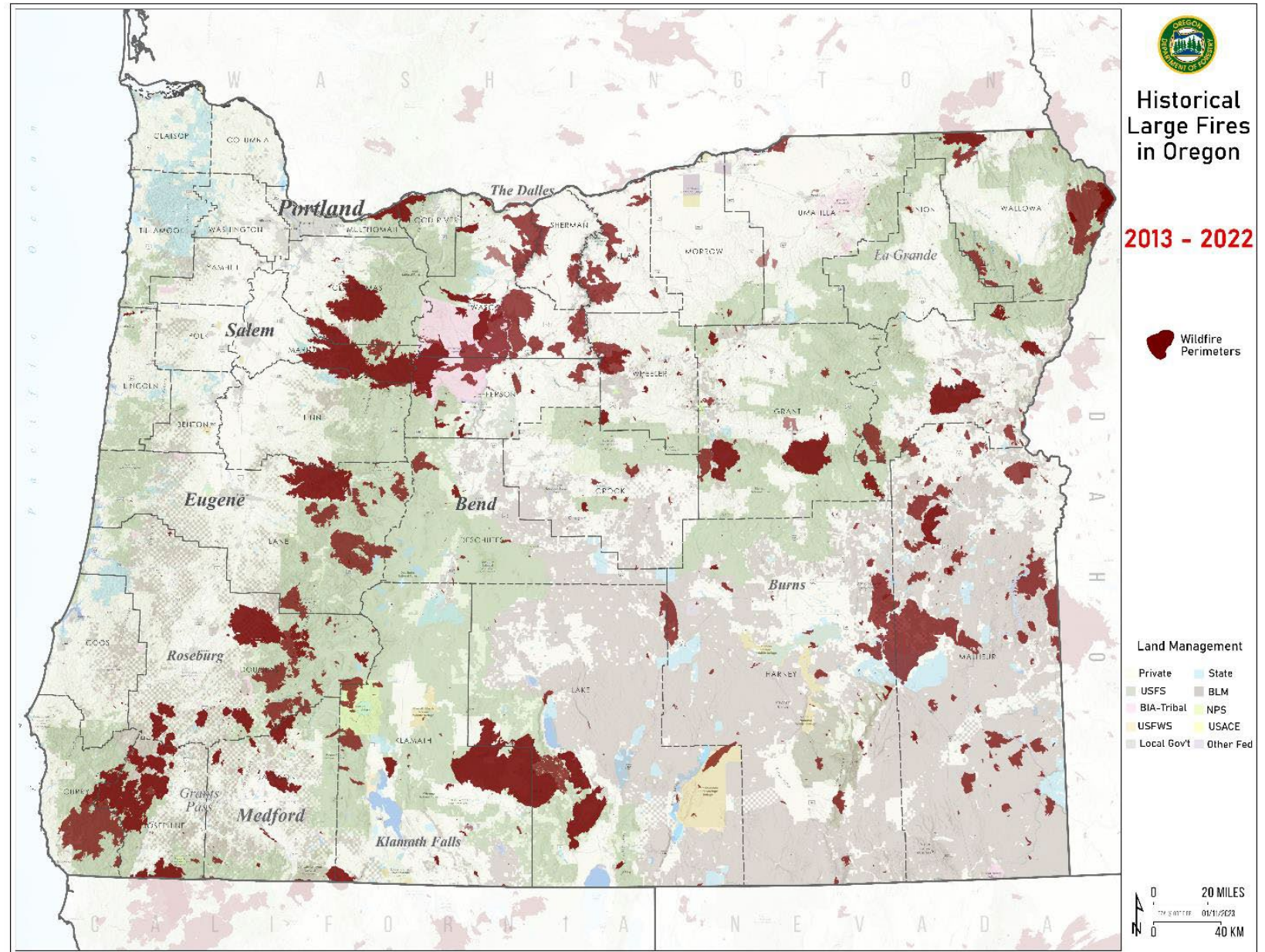
- Wildfire Funding Workgroup - Background
- A Decade of Wildfire and Wildfire Protection Jurisdiction Maps
- Wildfire Protection Assessments
- Proposal for Sustainable Wildfire Funding

Wildfire Funding Workgroup Proposal - Principles

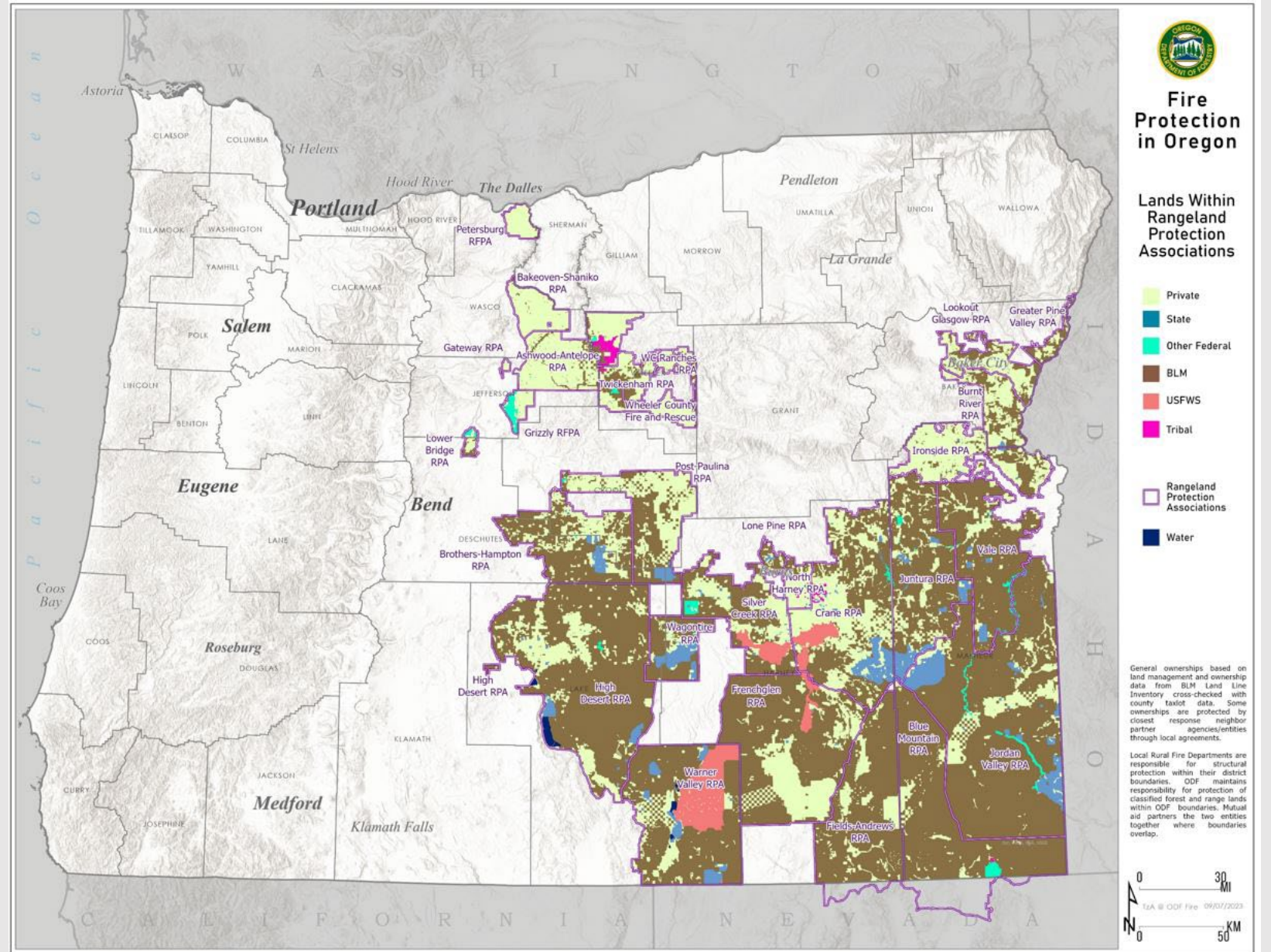
- We have a **very high functioning** response system. Maintaining a **strong public/private partnership** through a complete and coordinated system is a cornerstone of our success.
- Catastrophic wildfire impacts have expanded beyond a natural resource issue; it is of greater urgent social concern, with impacts to public health and safety, community wellbeing, tourism, and our economy that affects **all Oregonians**. We are looking to establish a **more equitable** funding system.
- Our funding system is **too complicated** and needs to be retooled to decomplexify, increase **trust in the equity of the system**, and ensure buy-in with our Legislature, landowners, and the broader public about who, how, and why we are paying into the system.

Oregon burns
645,000 acres
across all protection
jurisdictions
annually

10-year Average
from 2013 - 2022

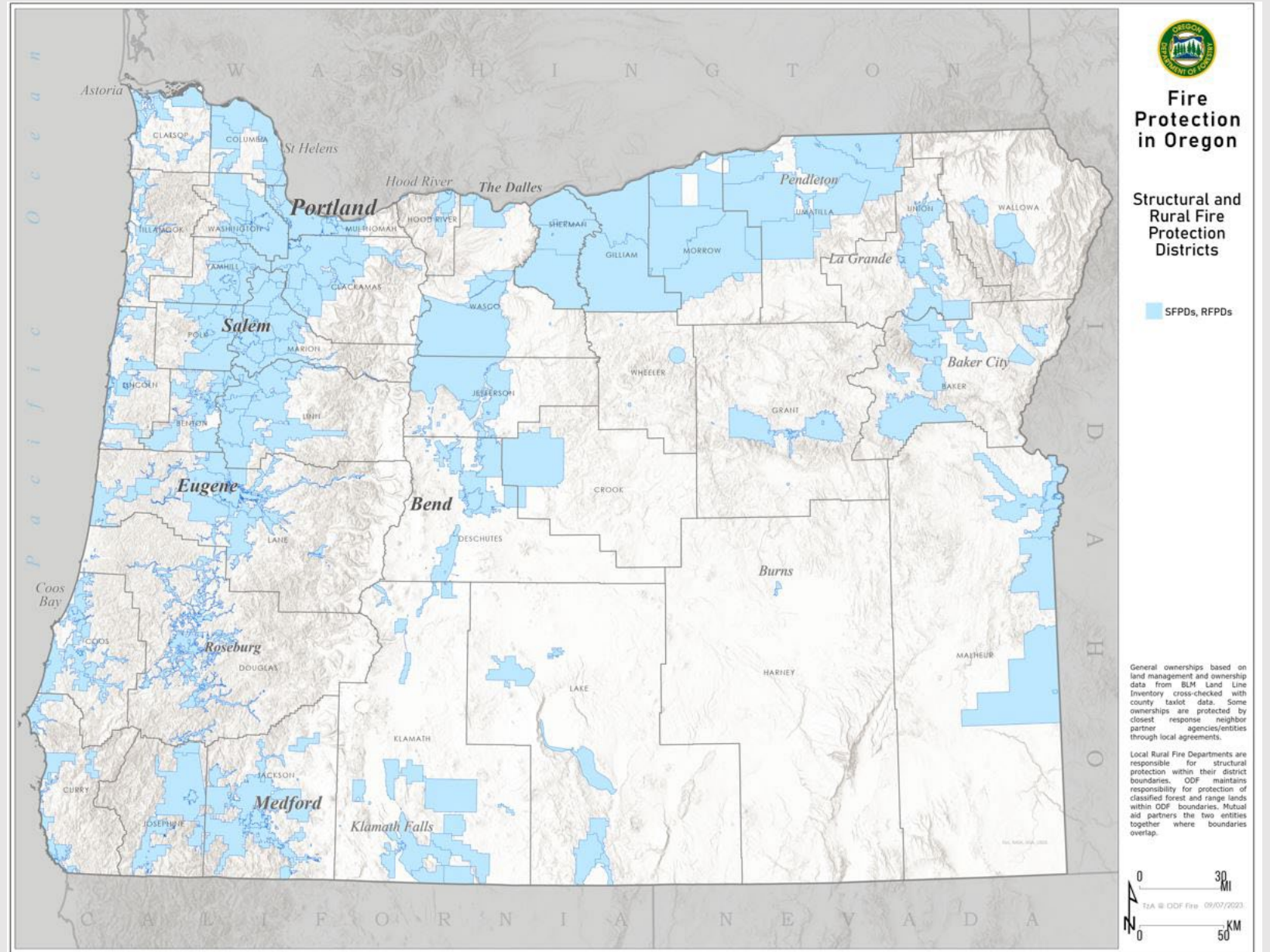


Rangeland Protection Association Boundaries



Structural and Rural Fire Protection District Boundaries

305 Districts

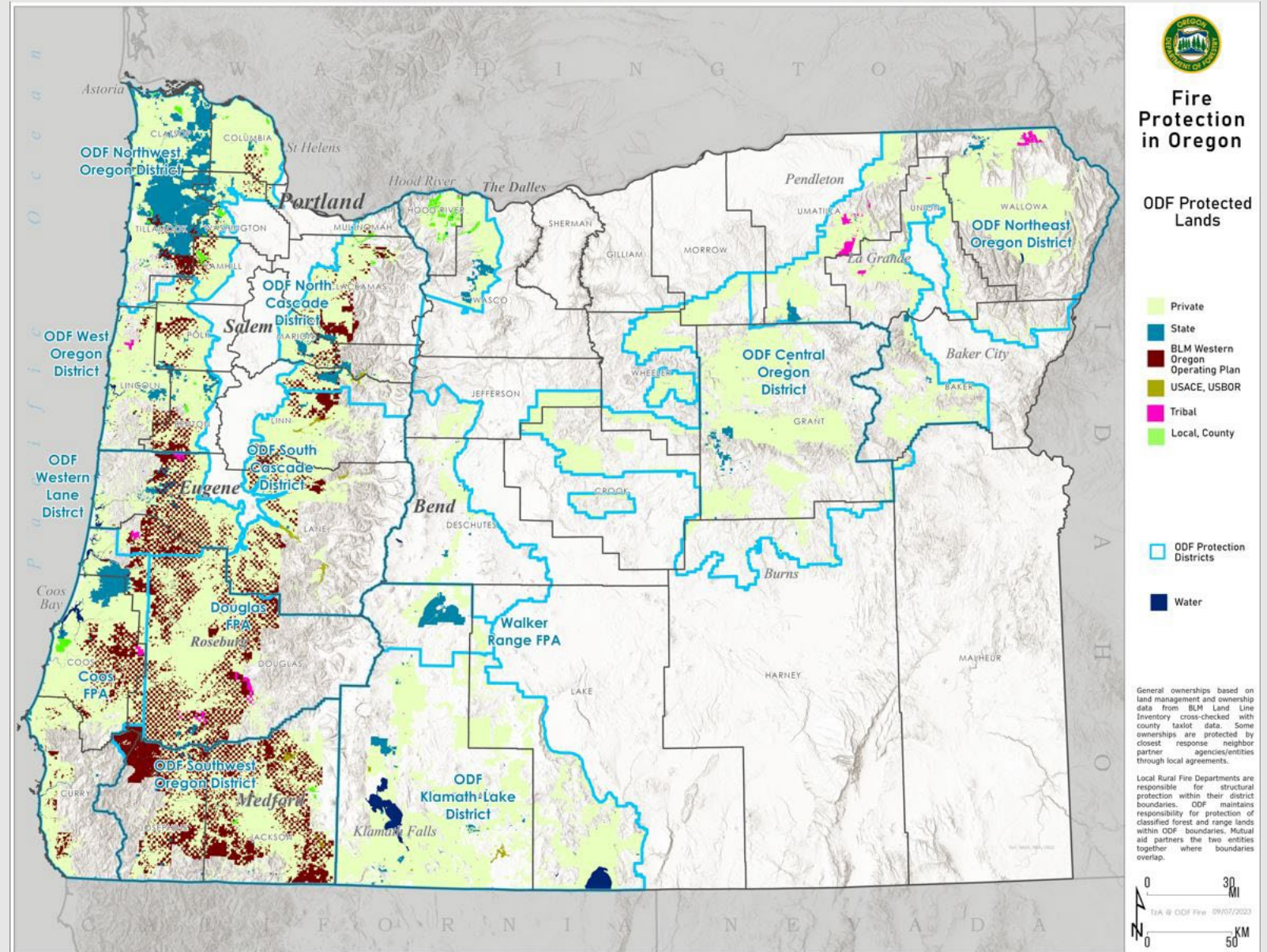


Oregon Department of Forestry (ODF)

Protection District Boundaries

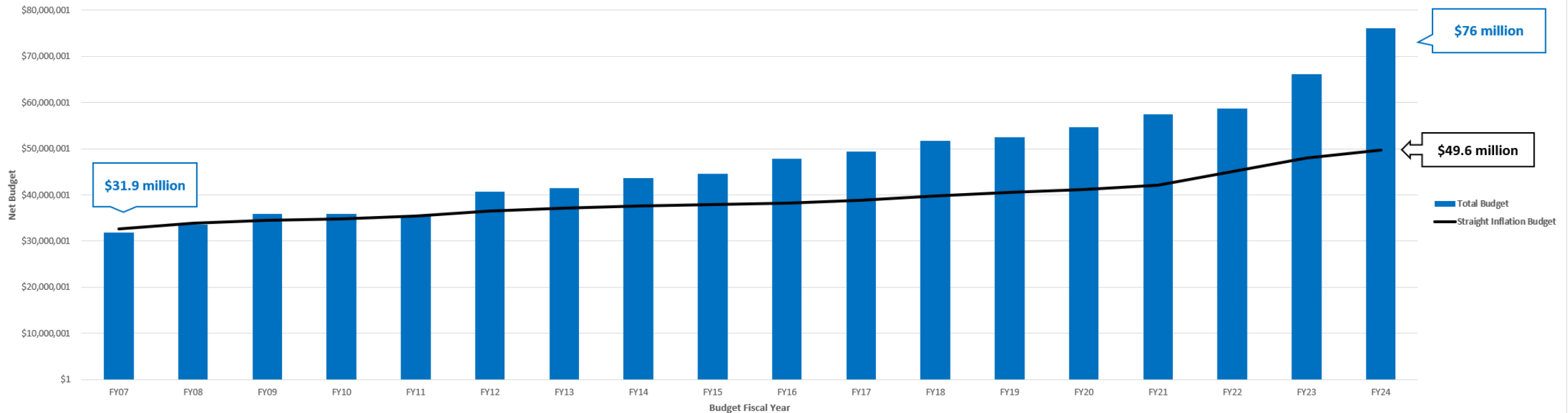
16 Million Acres of Protected Lands
Private/Public

Over 1,000 wildfires responses annually



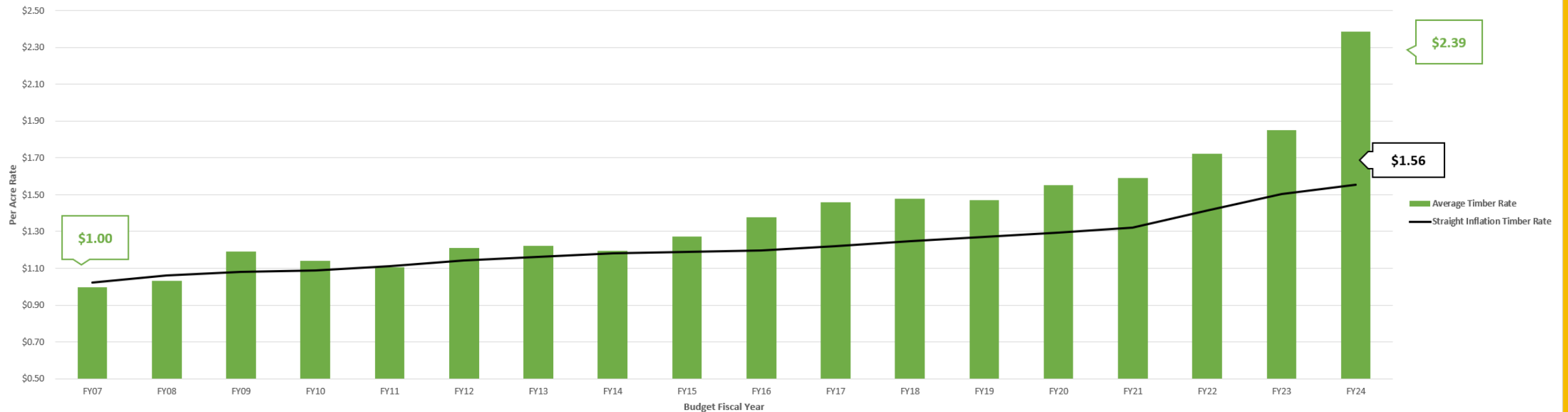
ODF Base Level of Wildfire Protection Budget

- Budgets have exceeded CPI since FY 07 by **52%**
- FY12 began the drought cycle in Oregon when over one million acres burned in Southeast Oregon
- “Adequate Level of Protection Budgets” are required by law. As wildfire workload increases, budgets increase: extension of seasonal workforce hours worked, equipment expenses and contracting services.



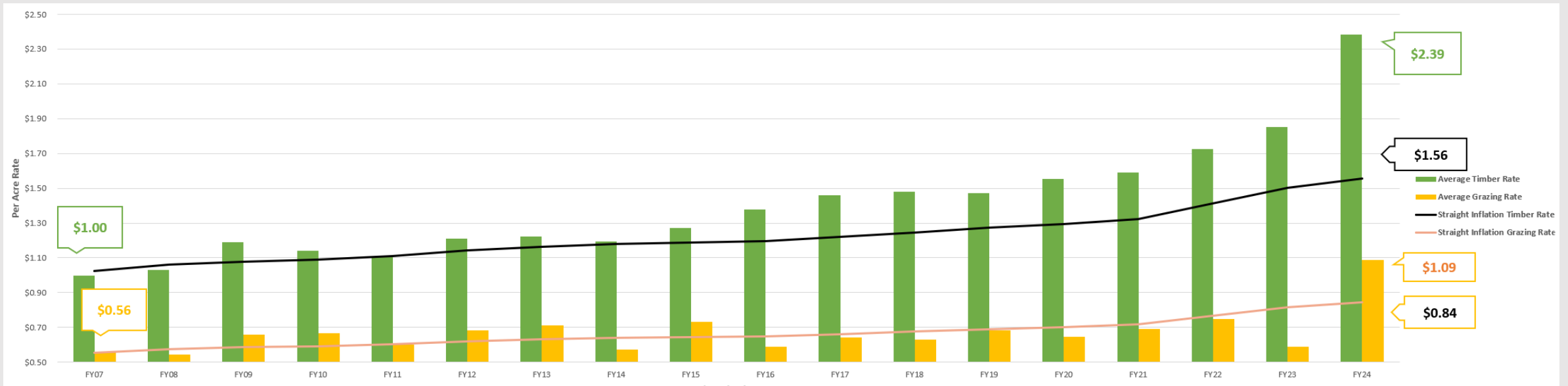
ODF Base Level of Wildfire Protection Rates

- Private Timber rate has exceeded CPI since FY 07 by **53%**
- Rates are established in law – by establishing a fire protection budget then applying that cost against protected acres
- Budgets and Rates are approved by the Board of Forestry

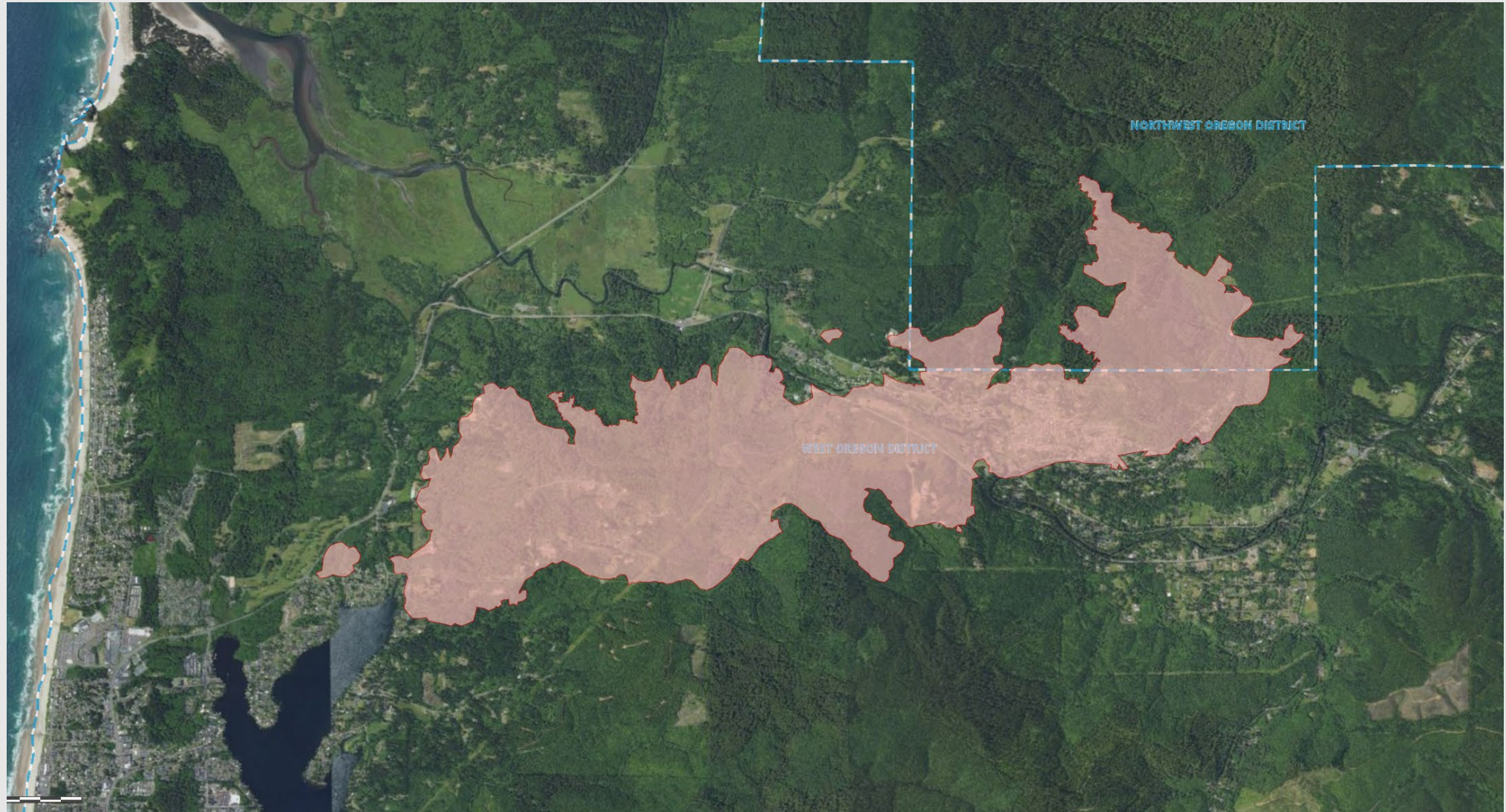


ODF Base Level of Wildfire Protection Rates

- Private Grazing rate has exceeded CPI since FY 07 by **30%**
- Grazing rates vary widely year-to-year given limited grazing acres, across districts. With less grazing acreage to spread budget cost fluctuations across, grazing rates rise and fall more dramatically than timber rates.



2020 Echo Mt Fire: Lincoln City & Otis



2020 Echo Mt Fire: Lincoln City

Landowners outside of the blue shade line pay
Wildfire Assessments

Current Model

Per Acre Assessment

52% Above CPI since 2007

Minimum Lot

\$18.75

Improved Lot Surcharge

\$47.50

Harvest Tax

\$.62 / 1000 board feet



Proposed Model

Revenues Indexed from 2007

Per Acre Assessment

Bring to Balance with CPI

Minimum Lot

\$27.55

Improved Lot Surcharge

\$69.80

Harvest Tax

\$1 / 1000 board feet

Statewide Fee

\$10

Wildfire Funding Workgroup Proposal - Principles

- We have a very high functioning response system. Maintaining a strong public/private partnership through a complete and coordinated system is a cornerstone of our success.
- Catastrophic wildfire impacts have expanded beyond a natural resource issue; it is of greater urgent social concern, with impacts to public health and safety, community wellbeing, tourism, and our economy that affects all Oregonians. We are looking to establish a more equitable funding system.
- Our funding system is too complicated and needs to be retooled to decomplexify, increase trust in the equity of the system, and ensure buy-in with our Legislature, landowners, and the broader public about who, how, and why we are paying into the system.
- (Doug Grafe's additional principle given consideration for a Statewide \$10 fee) We must prioritize investments in mitigation strategies that reduce the catastrophic wildfire risk. We must seek agency financial solvency through proactive funding ODF emergency fire costs and OSFM conflagrations.

Statewide Wildfire Protection Fee (SF) \$10

- The Statewide Wildfire Protection Fee is collected through property tax accounts annually by the Counties and distributed as detailed below.
- The fee is applied to all 2 million property tax accounts in the state and is anticipated to collect \$20 million annually.

	Oregon Department of Forestry	Department of State Fire Marshal
Emergency Suppression Costs	<ul style="list-style-type: none"> • Re-purpose existing Emergency Fire Cost Committee and Oregon Forestland Protection Fund. • Receives \$5M SF annual revenues. • Consider proactive funding GF portion of annual emergency fire costs. 	<ul style="list-style-type: none"> • Mobilization fund established in law. • \$5M SF annual revenues • Consider proactive funding GF portion of annual mobilization costs (Conflagrations).
Mitigation - Reducing Wildfire Risk	<ul style="list-style-type: none"> • Landscape Resiliency Fund established in law. • \$5M SF annual revenues • Consider additional GF investments in landscape resiliency. 	<ul style="list-style-type: none"> • Community Risk Reduction Fund established in law. • \$5M SF annual revenues • Consider additional GF investments in community risk reduction.

Questions?