

# Oregon Department of Energy

Notice of Intent  
Informational Meeting –  
Umatilla-Morrow County  
Connect Project

Via WebEx/Teleconference

November 1, 2023



**5:00 PM - Meet and Greet and  
1:1 conversations with ODOE  
and Applicant**

**6:00 PM - Presentation**

# AGENDA

- **Welcome and Introductions**
- **Energy Facility Siting Process Overview**
- **Proposed Facility Overview**
- **Q & A Session**

**Notice of Intent  
to Apply for a Site Certificate  
for the  
Umatilla-Morrow County Connect Project**

September 2023

**Submitted to:**  
Oregon Department of Energy

**Prepared by:**  
Umatilla Electric Cooperative  
750 West Elm Avenue  
PO Box 1148  
Hermiston, OR 97838

# Meeting Overview

---

This informational meeting:

- Is intended to give members of the public an opportunity to learn about the proposal and provide comment on the NOI.
- Is **not** a contested case hearing, and participation in the meeting is not required to preserve issues or standing for the contested case.

Please hold all questions and comments until the Q&A session at end of the presentations.

Any person engaging disruptive behavior may be asked or required to leave the meeting.

# Oregon's Energy Facility Siting Program

---

Oversees the review, decision-making, and compliance for most large-scale energy-generating facilities and infrastructure in Oregon.

- Energy Facility Siting Council (EFSC) is final decision-making authority.
- Oregon Department of Energy (ODOE), Siting Division serves as staff to EFSC.

Consolidated process between state agencies and local government:

- Eliminates duplication, consolidates timelines, decisions, and judicial review
- Reviews proposal for compliance with applicable standards, laws, and rules.
- Provides opportunities for public participation and comment.
- Coordinates review and solicits input from reviewing agencies, local governments, and tribal governments.

# State Jurisdictional “Energy Facilities”

## ORS 469.300(11)

- **High Voltage Transmission Lines**
- Electrical Power Generating Plants (Thermal, Solar, Wind, Geothermal, etc.)
- Biomass and Synthetic Fuel Production Facilities
- Fuel Pipelines
- Natural Gas Reservoir Surface Facilities
- Nuclear Installations
- LNG Storage Facilities
- Uranium Mills or Mill Tailings Disposal Facilities



# State Jurisdictional “Energy Facilities” ORS 469.300(11)

The definition of “Energy Facility” located within this Oregon Revised Statute is what establishes that jurisdiction.

For electrical transmission lines, the project has to be:

- Greater than 10 miles in length; and
- Greater or equal to 230 kilovolts (kV); and
- Crossing more than one jurisdiction



# Requirements for Site Certificate

---

In order to issue a site certificate, EFSC must determine that:

- The facility complies with all applicable Council standards, or the overall public benefits of the facility outweigh any adverse effects on a resource or interest protected by the standards the facility does not meet.
- The facility complies with all other Oregon laws and rules identified in the project order, as amended, as applicable to the issuance of a site certificate for the proposed facility.
- The facility complies with the statewide land use planning goals.

# Energy Facility Siting Process

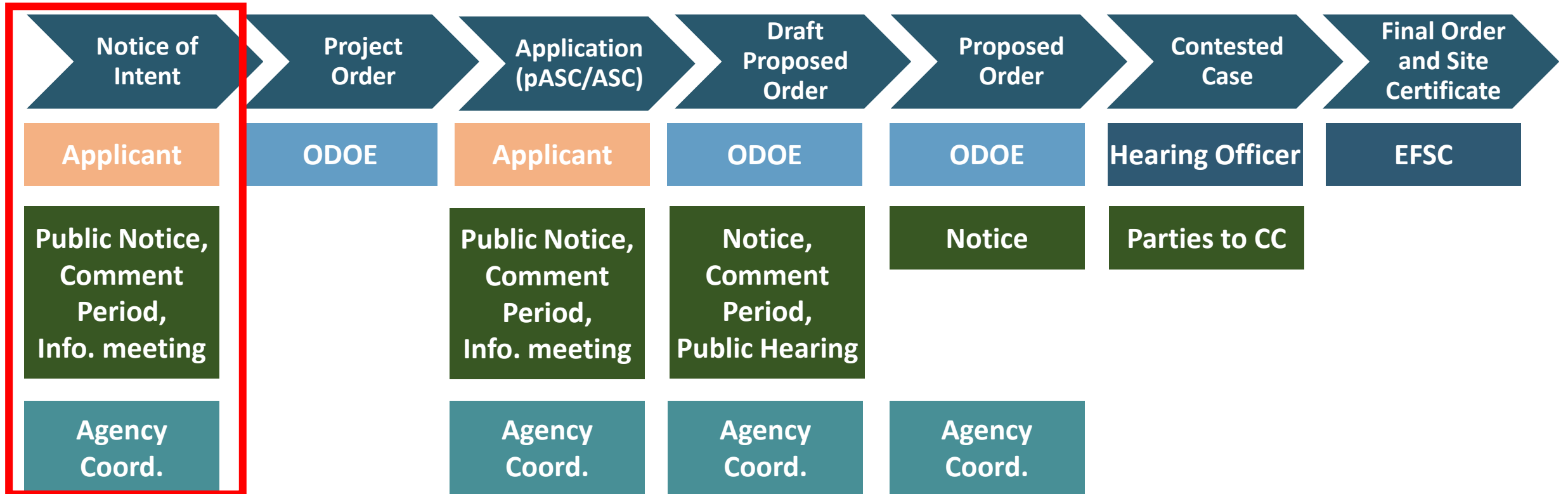
## EFSC Siting Standards:

- General Standard of Review
- Organizational Expertise
- Structural Standard
- Soil Protection
- Land Use
- Protected Areas
- Retirement and Financial Assurance
- Fish and Wildlife Habitat
- Threatened and Endangered Species
- Scenic Resources
- Historic, Cultural and Archaeological Resources
- Recreation
- Public Services
- Waste Minimization
- Wildfire Prevention and Risk Mitigation
- Noise
- **Siting Standards for Transmission Lines**
- Need Standard



# ENERGY FACILITY SITING PROCESS

## Application for Site Certificate Process



WE ARE HERE

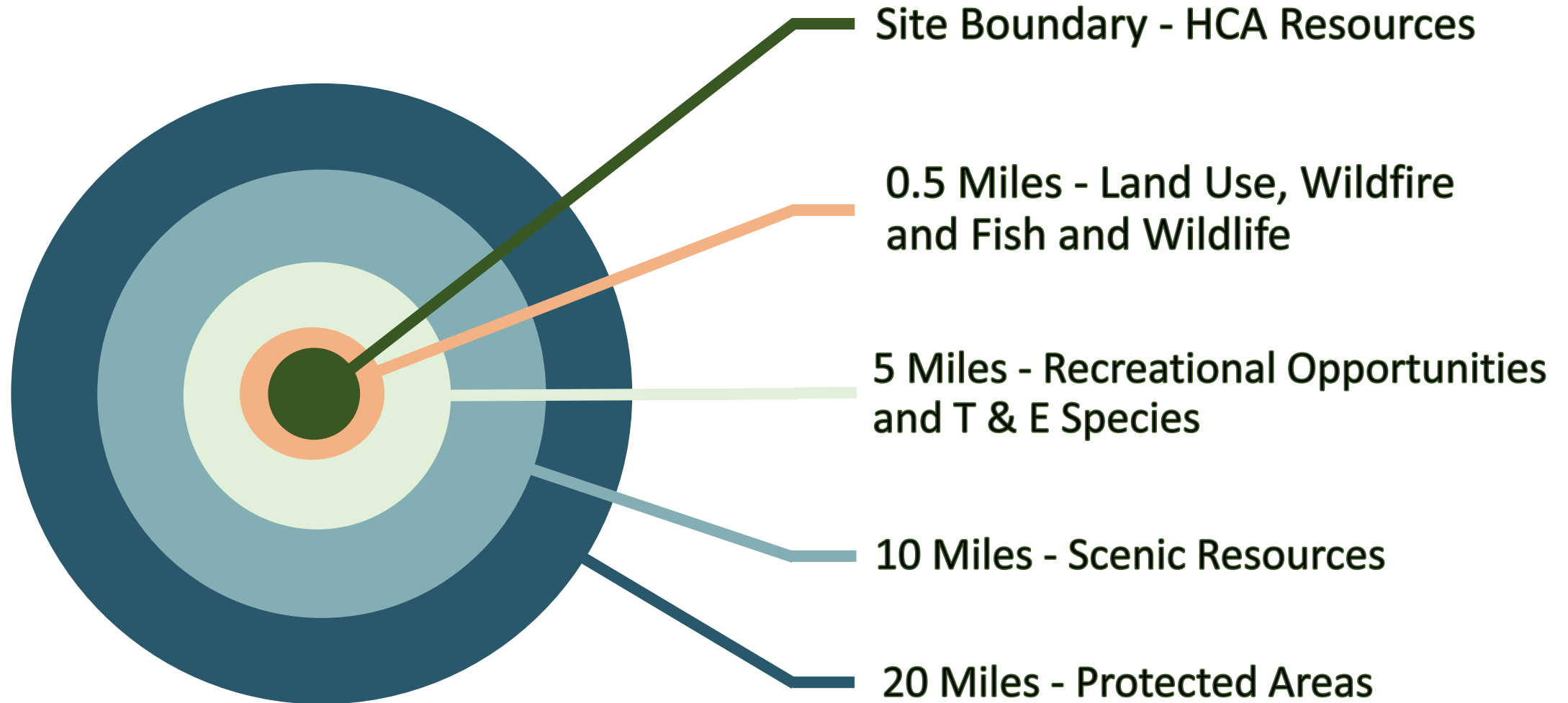
# Reviewing Agency Coordination

---

## **Reviewing Agencies and Special Advisory Groups:**

- Provide comments on the proposed facility within the jurisdiction or expertise of the agency
- Make recommendations regarding the size and location of analysis area(s)
- Identify:
  - Studies that should be conducted to identify potential impacts
  - Statutes, administrative rules, applicable substantive criteria, and local government ordinances administered by the agency
  - Permits administered by the agency that might apply to construction or operation of the proposed facility

# NOI Study Area Distances



# Land Use

---

- The applicant may choose to obtain land use approval from EFSC or from the affected local governments.
- NOI indicates applicant intends to seek land use determination from EFSC
- If election changes, interested persons should participate in the local land use process.
- Both the Morrow County Board of Commissioners and Umatilla County Board of Commissioners have been appointed as a Special Advisory Group

# Public Comment Period

---

- Opportunity for the public to comment on the Notice of Intent is Open. All written comments submitted to ODOE are included in the public record and provided to the applicant.
- Comment period closes on December 1, 2023.
- Oral Comments may be provided during the Q&A Session at this meeting.
- This meeting is not a public hearing, and participation is not required to establish standing to participate in the contested case during the review of the Application for Site Certificate.
- Comments during tonight's public informational meeting will occur after the applicant's presentation

# Helpful Resources

Oregon Department of Energy / Energy Facilities & Safety / Facilities

## Energy Facility Siting

Home > Siting Public Comment

### Siting Public Comment

**\* Required Field**

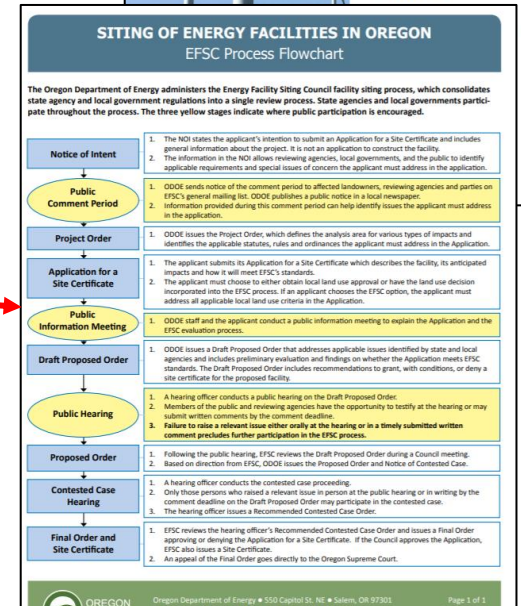
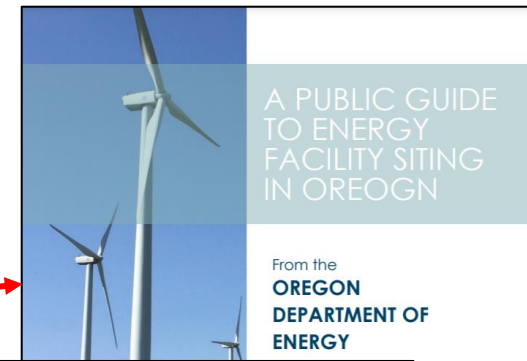
#### Project Selection

Project \*

Please select the project that you are interested in commenting on

Next

COUNCIL INFORMATION	ENERGY FACILITIES	FACILITIES UNDER REVIEW
<ul style="list-style-type: none"> <li>About the Council</li> <li>Council Jurisdiction</li> <li>Council Meetings</li> <li>Council Rulemaking</li> <li>Compliance Program</li> </ul>	<ul style="list-style-type: none"> <li>Public Guide</li> <li>Siting Project Updates</li> <li>Facilities Under EFSC</li> <li>Public Comment Portal</li> <li>EFSC Facilities Map</li> <li>Federal Facilities in Oregon</li> <li>About the Siting Process</li> <li>Siting Standards</li> <li>Siting Statutes &amp; Rules</li> <li>Fact Sheets</li> </ul>	<ul style="list-style-type: none"> <li>Archway Solar Energy Facility</li> <li>Cascade Renewable Transmission System</li> <li>Boardman to Hemingway Transmission Line</li> <li>Echo Solar Project</li> <li>Eugene to Medford Transmission Line</li> <li>Nolin Hills Wind Power Project</li> <li>Wagon Trail Solar Project</li> </ul>



<https://www.oregon.gov/energy/facilities-safety/Pages/default.aspx>

<https://www.oregon.gov/energy/facilities-safety/facilities/Pages/UMCC.aspx>

<https://odoe.powerappsportals.us/en-US/SitingPublicComment/>



# ODOE Contact

---

Chase McVeigh-Walker, Senior Siting Analyst  
Oregon Department of Energy  
550 Capitol St. NE  
Salem, OR 97301  
(971) 600-5323

[Chase.mcveigh-walker@energy.oregon.gov](mailto:Chase.mcveigh-walker@energy.oregon.gov)

# ***Umatilla - Morrow County Connect Project***

*230 kV Transmission Line*

***Umatilla  
Electric  
Cooperative***

***Project Overview***





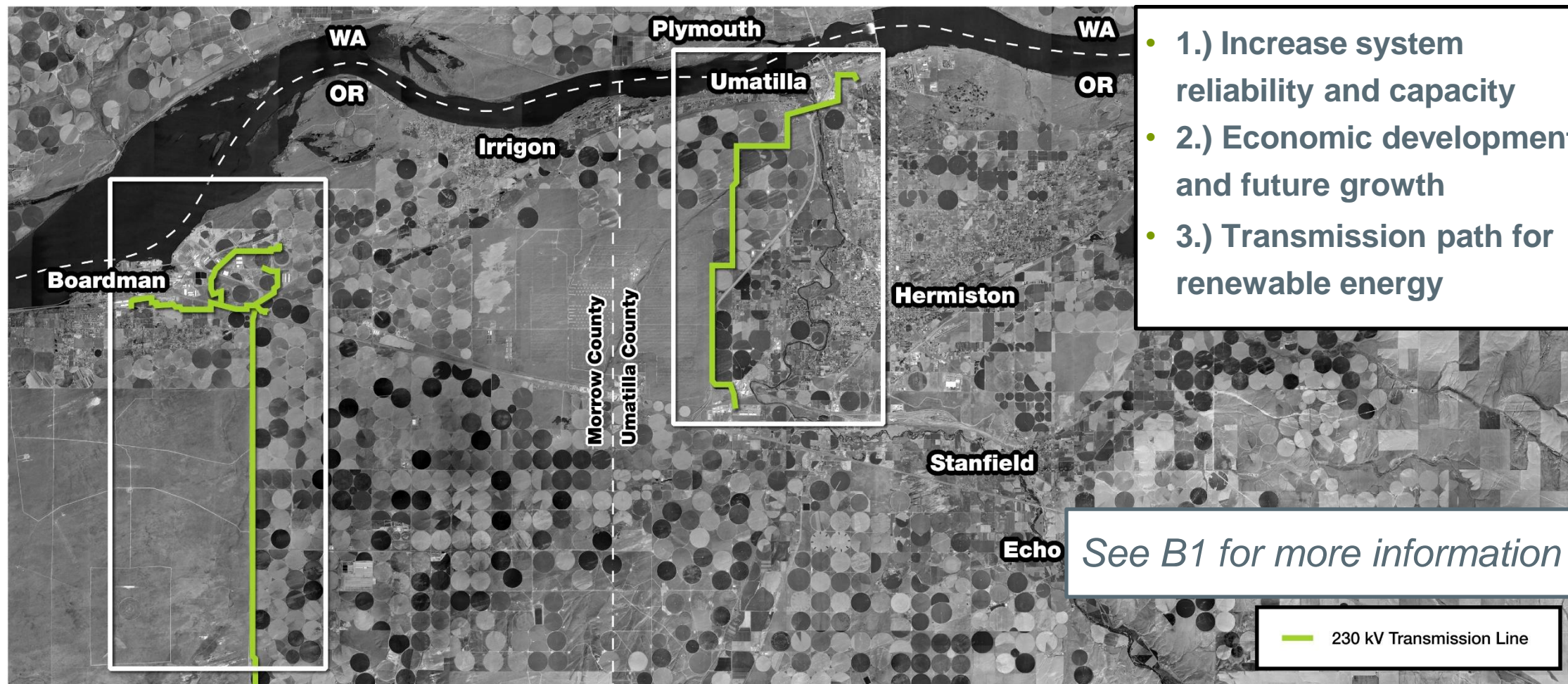
# Purpose and Need for New Transmission

- Increase system reliability and capacity
- Economic development and future growth
- Transmission path for renewable energy

*See B1 for more information*



# UMCC Project Purpose and Need



# Project Description

- **Voltage:** Double-Circuit, 230 kV
- **Type of structure:** Steel, single pole
- **End points:** Highway 730 Switchyard and Ordnance Switchyard
- **Length:** Approximately 14 miles
- **Height of structures:** Varies, typically 90-120 feet
- **Span between structures:** Varies, typically 600 feet



*See B2 for more information*

Study Area

**Ordinance**  
Switchyard

Highway  
**730**  
Switchyard

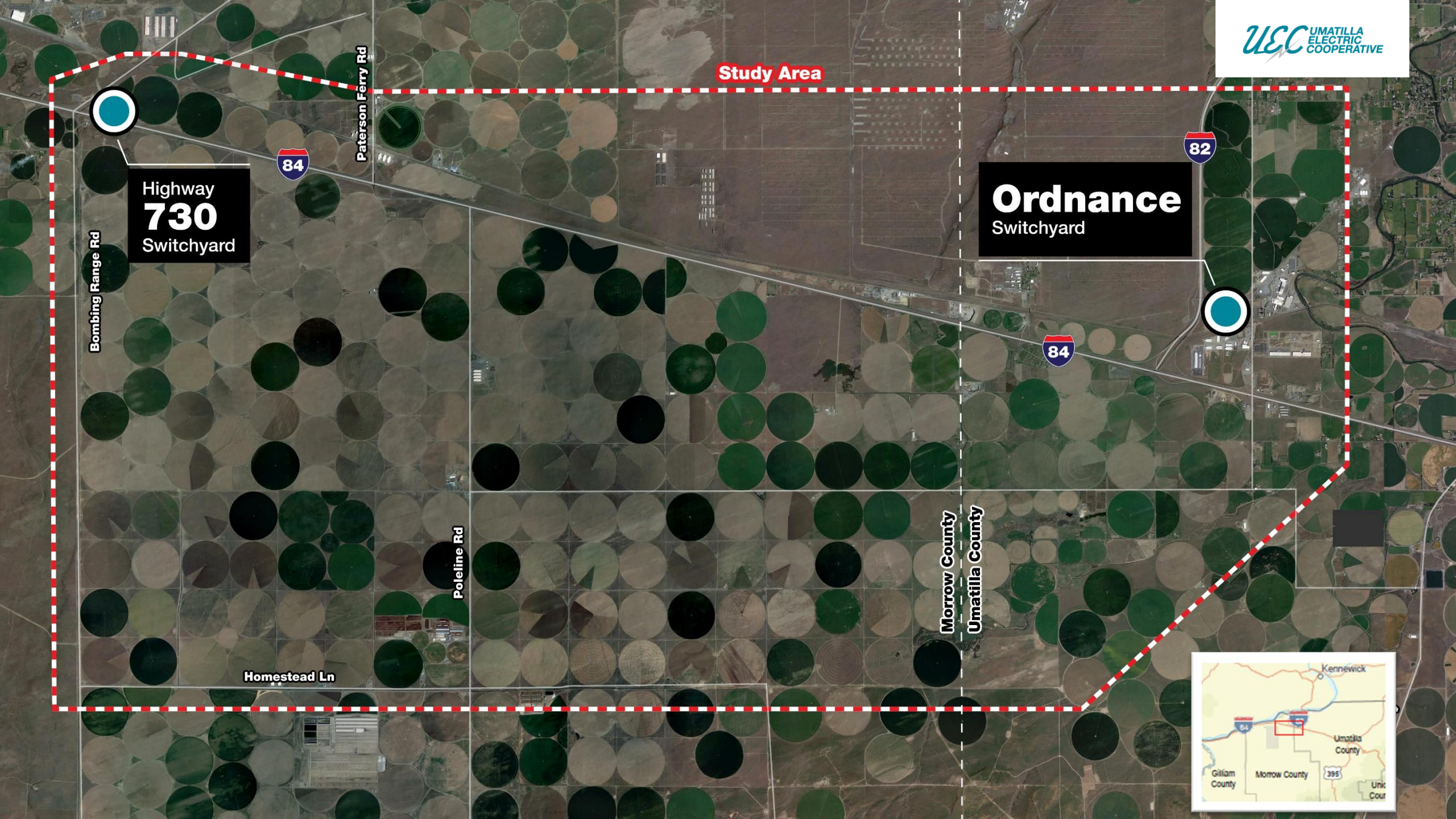
Bombing Range Rd

Paterson Ferry Rd

Poleline Rd

Morrow County  
Umatilla County

Homestead Ln



# Routing & Siting Study

## 1) Resource Data Collection

- Biological
- Water/Wetlands
- Land Use
- Cultural Resources
- Visual
- Existing Utilities
- Roads
- Canals
- Agricultural
- Ownership/Jurisdiction

## 2) Sensitivity Analysis

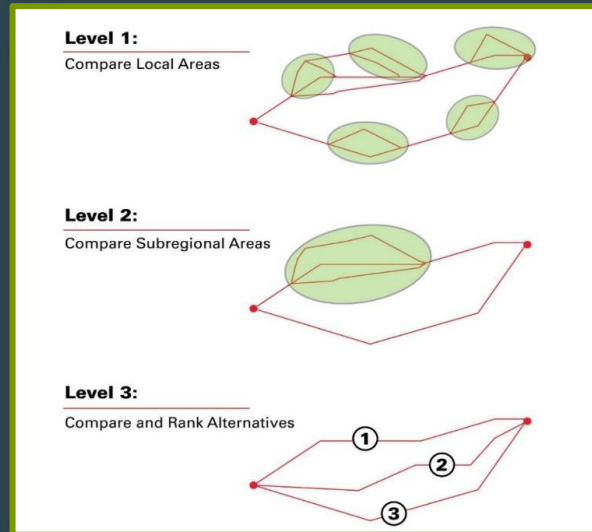
- Define High, Moderate, Low Sensitivities
- Identify routing opportunities

## 4) Preferred and Alternative Routes

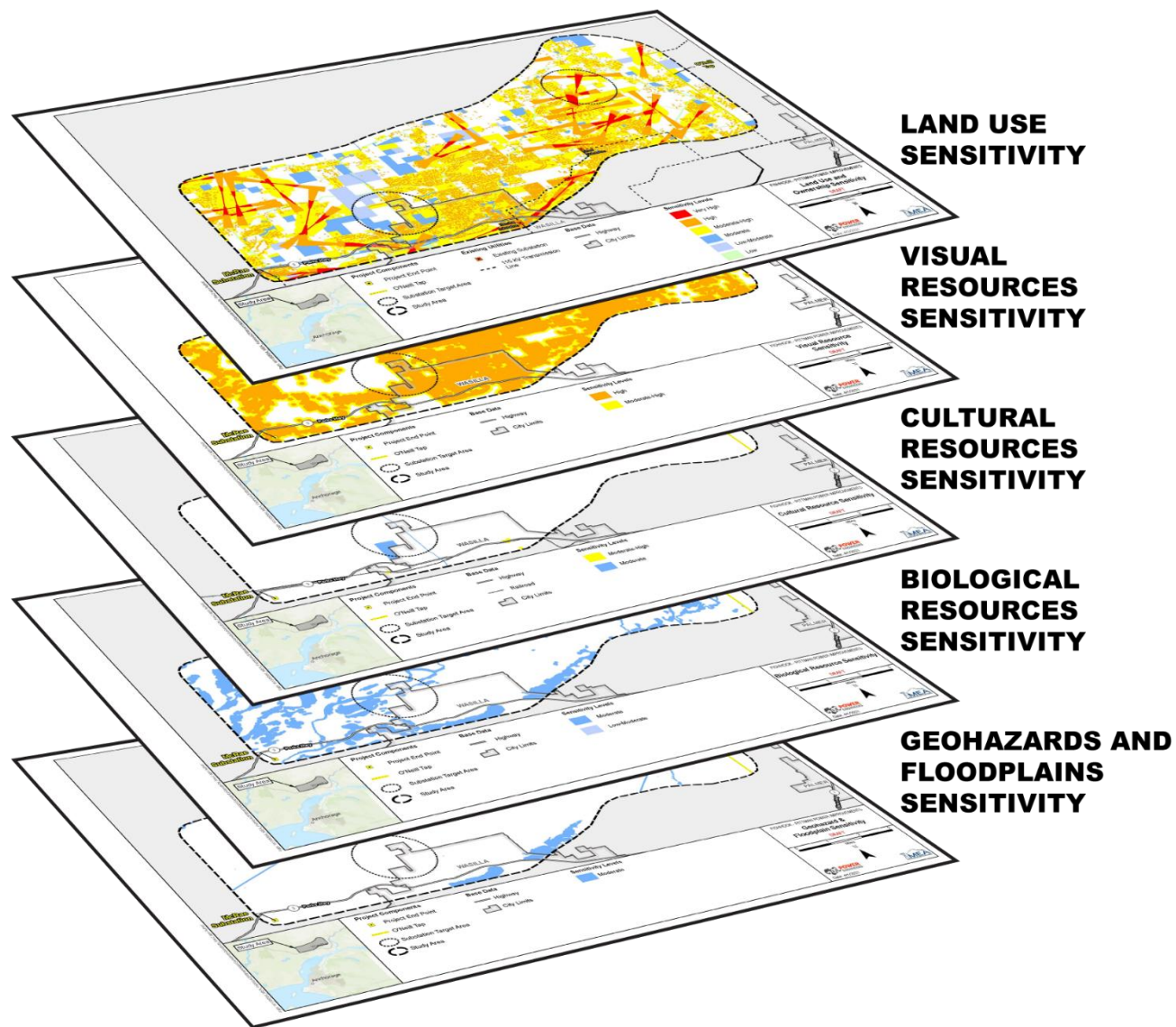
- Four included with NOI

## 3) Route Screening

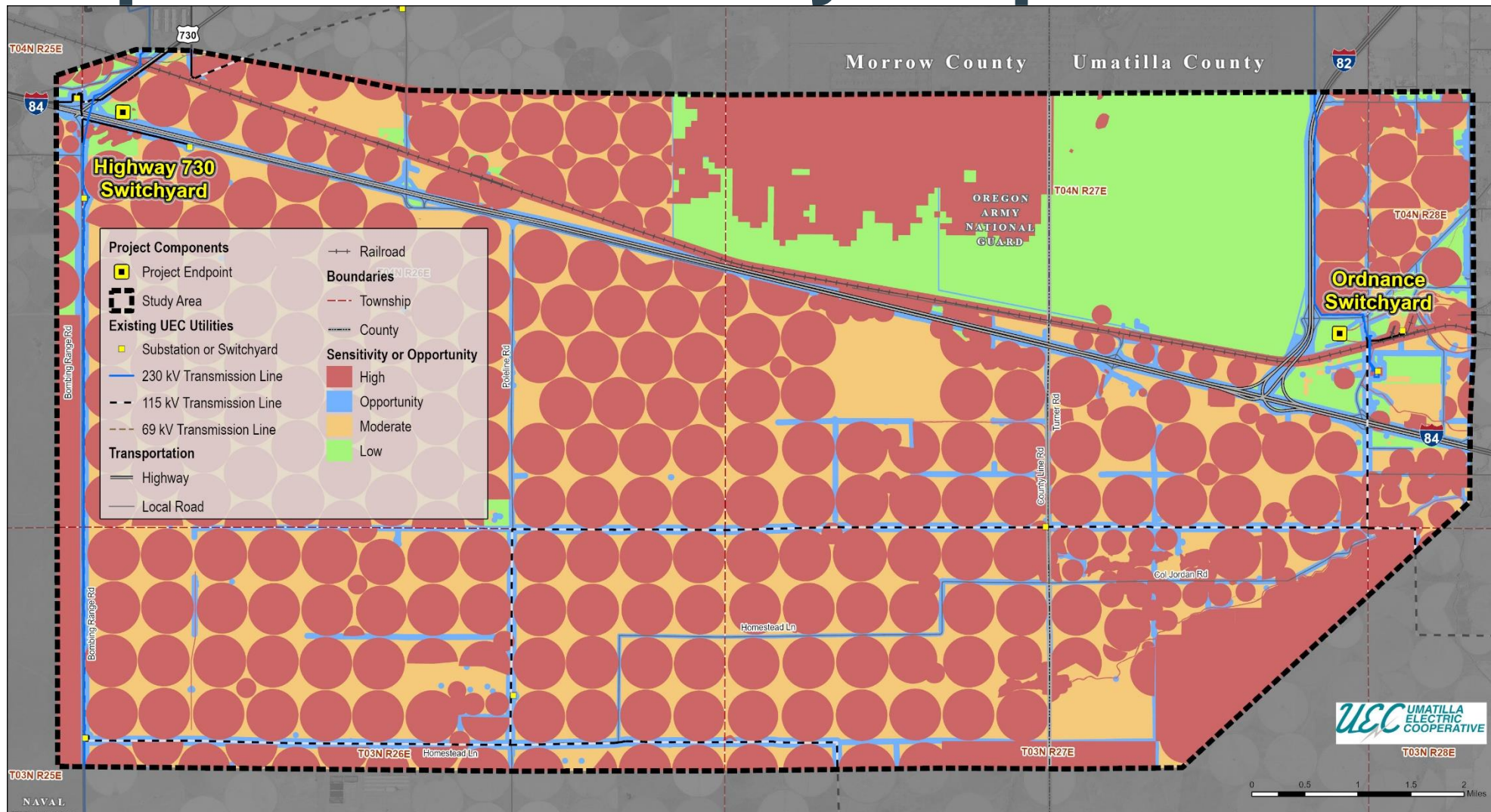
- Three (3) levels of screening
- Based on crossings of sensitivities, resources, etc.



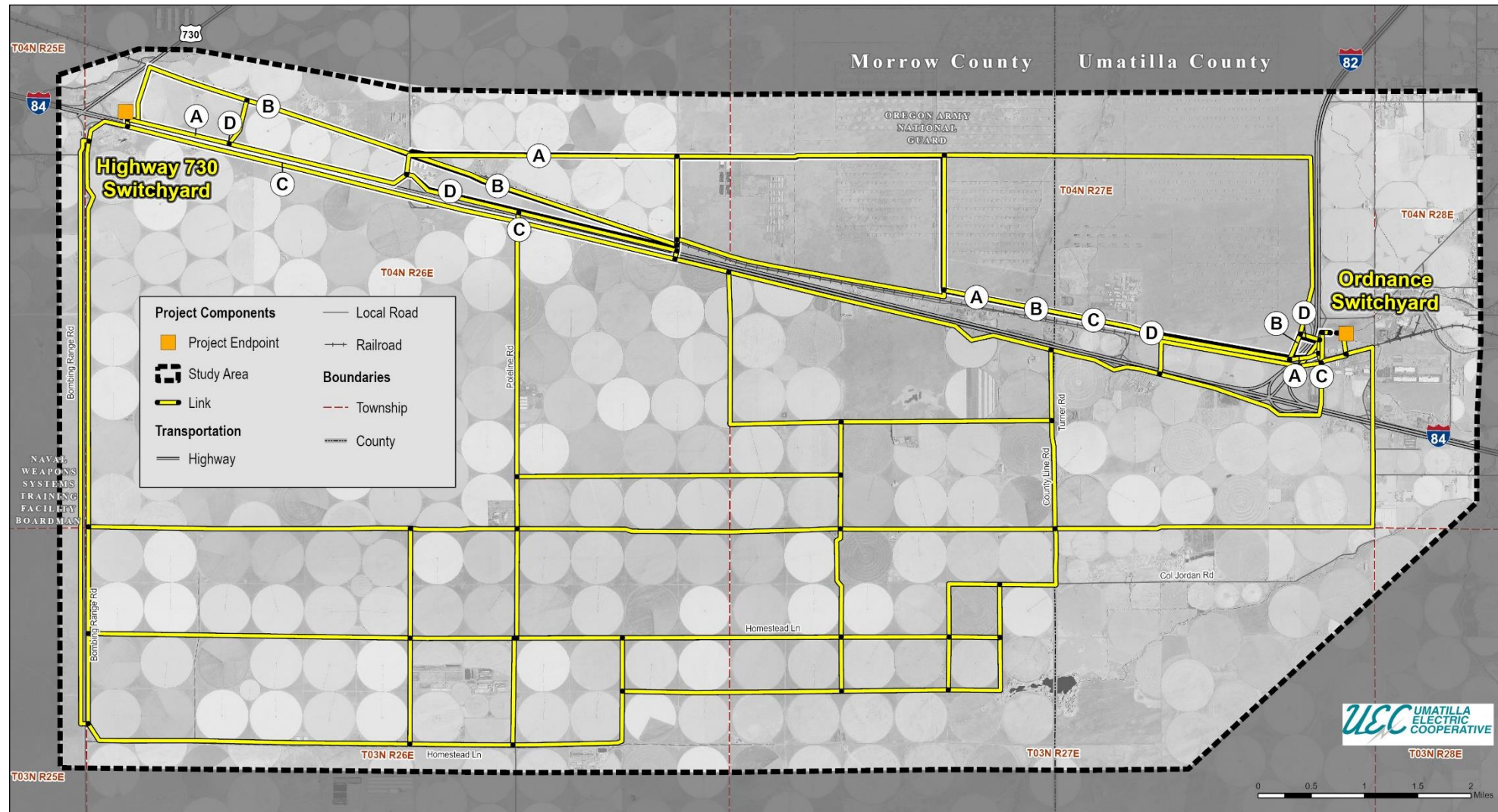
# Composite Sensitivity



# Composite Sensitivity Map

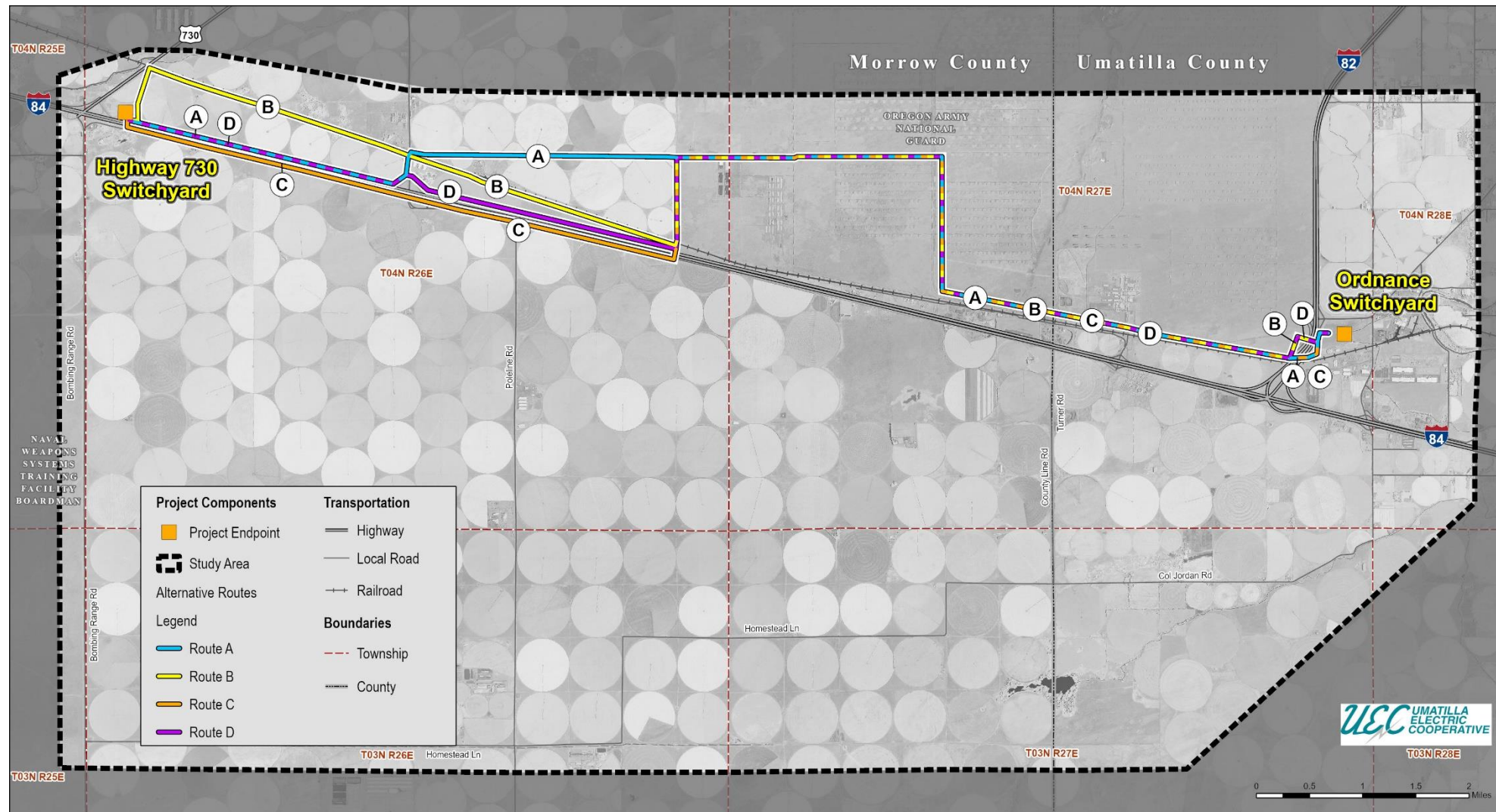


# Preliminary Route Links

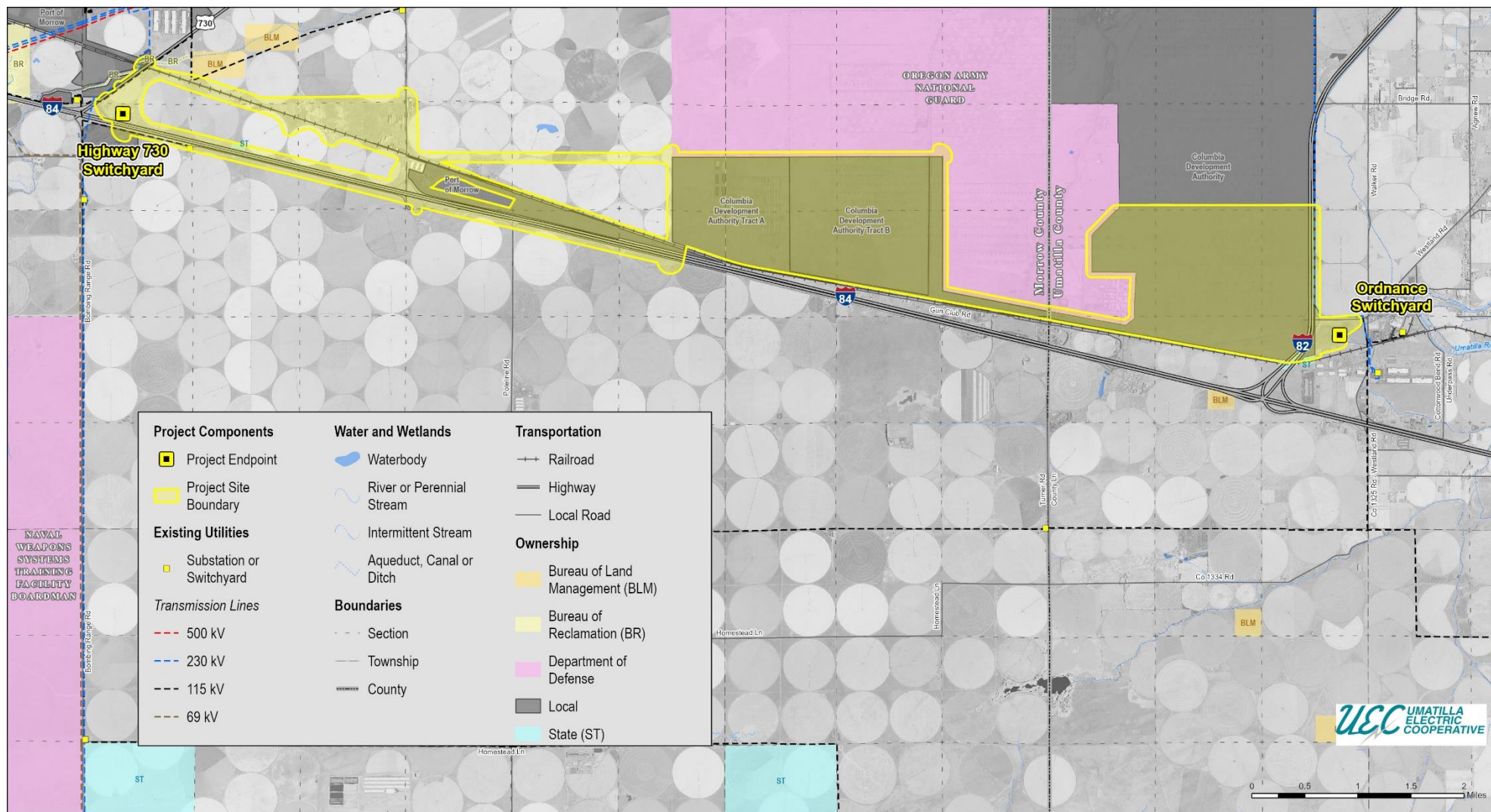




# Route Alternatives



# Site Boundary



# Preliminary Schedule

- **Siting and routing study:** Oct 2022 – Sept 2023
- **EFSC Notice of Intent:** Filed September 13, 2023
- **Application for EFSC Site Certificate:** File Q2 2024
- **Final Order and EFSC Site Certificate:** Anticipate receiving Q1 2025
- **Begin construction:** Q2 2025
- **In service:** Q4 2025



# Potential/Planned Public Outreach and Engagement



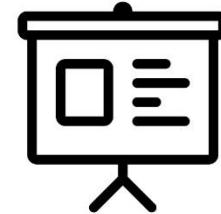
FACT SHEET



FAQ'S



WEB CONTENT



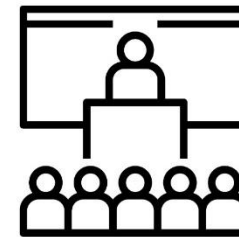
PRESENTATIONS



STAKEHOLDER  
BRIEFINGS



NOTIFICATION/  
MAILING LIST



PUBLIC MEETINGS/  
HEARINGS

See B3 for more information

**Visit [umccproject.com](http://umccproject.com) for  
more information**

**Email us at:**

**[UMCCproject@umatillaelectric.com](mailto:UMCCproject@umatillaelectric.com)**



# Q&A Session/Comments

## We will call on you

**In Person:** Please complete a comment card with your name and contact information and hand it to Erica.

**Webinar Participants:** The bottom right of the main window is a set of icons.

Click on “Participants”

Click on the hand icon in bottom right of the participant window

Clicking on it again will lower your hand.

**Phone Participants:** We will call on you

Press \*3 on your telephone keypad to raise your hand.

Press \*3 again on your telephone keypad to lower your hand.

