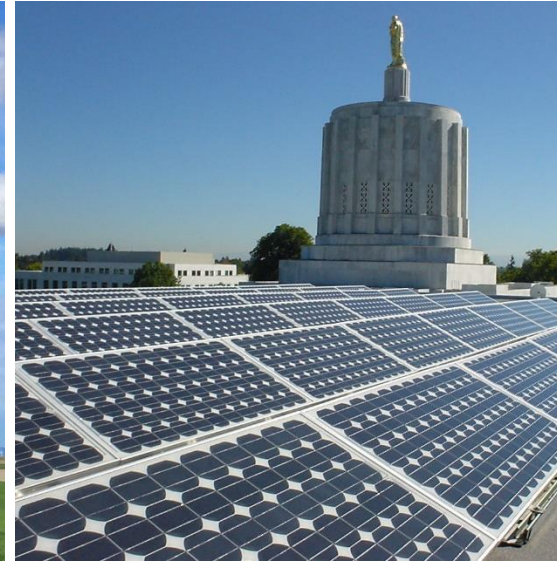


Oregon Department of **ENERGY**

Muddy Creek
Energy Park

Notice of Intent
Informational Meeting

July 25, 2023
City Hall
Brownsville, OR



5:00 PM - Meet and Greet and
1:1 conversations with ODOE
and Applicant

6:00 PM - Presentation

AGENDA

- Public Meeting Overview
- Siting Process Overview (ODOE)
- Proposed Facility Overview (Applicant)
- Q&A Session - Comment

**Notice of Intent to
Apply for a Site Certificate**

Muddy Creek Energy Park
May 2023

Submitted to
Oregon Energy Facility Siting Council

Prepared for
Hanwha Q CELLS USA Corp.

Prepared by
 TETRA TECH

Meeting Overview

This informational meeting:

- Is intended to give members of the public an opportunity to learn about the proposal and provide comment on the NOI.
- Is **not** a contested case hearing, and participation in the meeting is not required to preserve issues or standing for the contested case.

Please hold all questions and comments until the Q&A session at end of the presentations.

Any person engaging disruptive behavior may be asked or required to leave the meeting.

Oregon's Energy Facility Siting Program

Oversees the review, decision-making, and compliance for most large-scale energy-generating facilities and infrastructure in Oregon.

- Energy Facility Siting Council (EFSC) is final decision-making authority.
- Oregon Department of Energy (ODOE), Siting Division serves as staff to EFSC.

Consolidated process between state agencies and local government:

- Eliminates duplication, consolidates timelines, decisions, and judicial review
- Reviews proposal for compliance with applicable standards, laws, and rules.
- Provides opportunities for public participation and comment.
- Coordinates review and solicits input from reviewing agencies, local governments, and tribal governments.

State Jurisdictional “Energy Facilities” ORS 469.300(11)(a)(D)

A solar photovoltaic power generation facility using more than:

- (i) 160 acres located on high-value farmland as defined in ORS 195.300;**
- (ii) 1,280 acres located on land that is predominantly cultivated or that, if not cultivated, is predominantly composed of soils that are in capability classes I to IV, as specified by the National Cooperative Soil Survey operated by the Natural Resources Conservation Service of the United States Department of Agriculture; or
- (iii) 1,920 acres located on any other land.



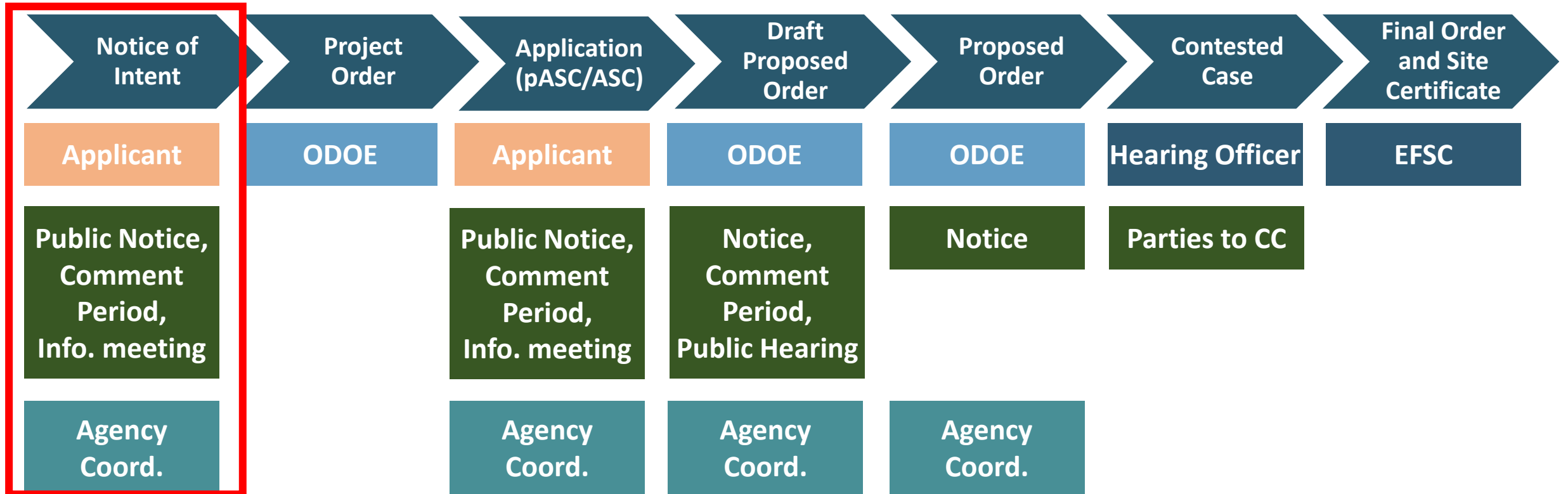
Energy Facility Siting Process

EFSC Siting Standards:

- General Standard of Review
- Organizational Expertise
- Structural Standard
- Soil Protection
- Land Use
- Protected Areas
- Retirement and Financial Assurance
- Fish and Wildlife Habitat
- Threatened and Endangered Species
- Scenic Resources
- Historic, Cultural and Archaeological Resources
- Recreation
- Public Services
- Waste Minimization
- Wildfire Prevention and Risk Mitigation
- Noise
- Siting Standards for Transmission Lines
- Need Standard

ENERGY FACILITY SITING PROCESS

Application for Site Certificate Process



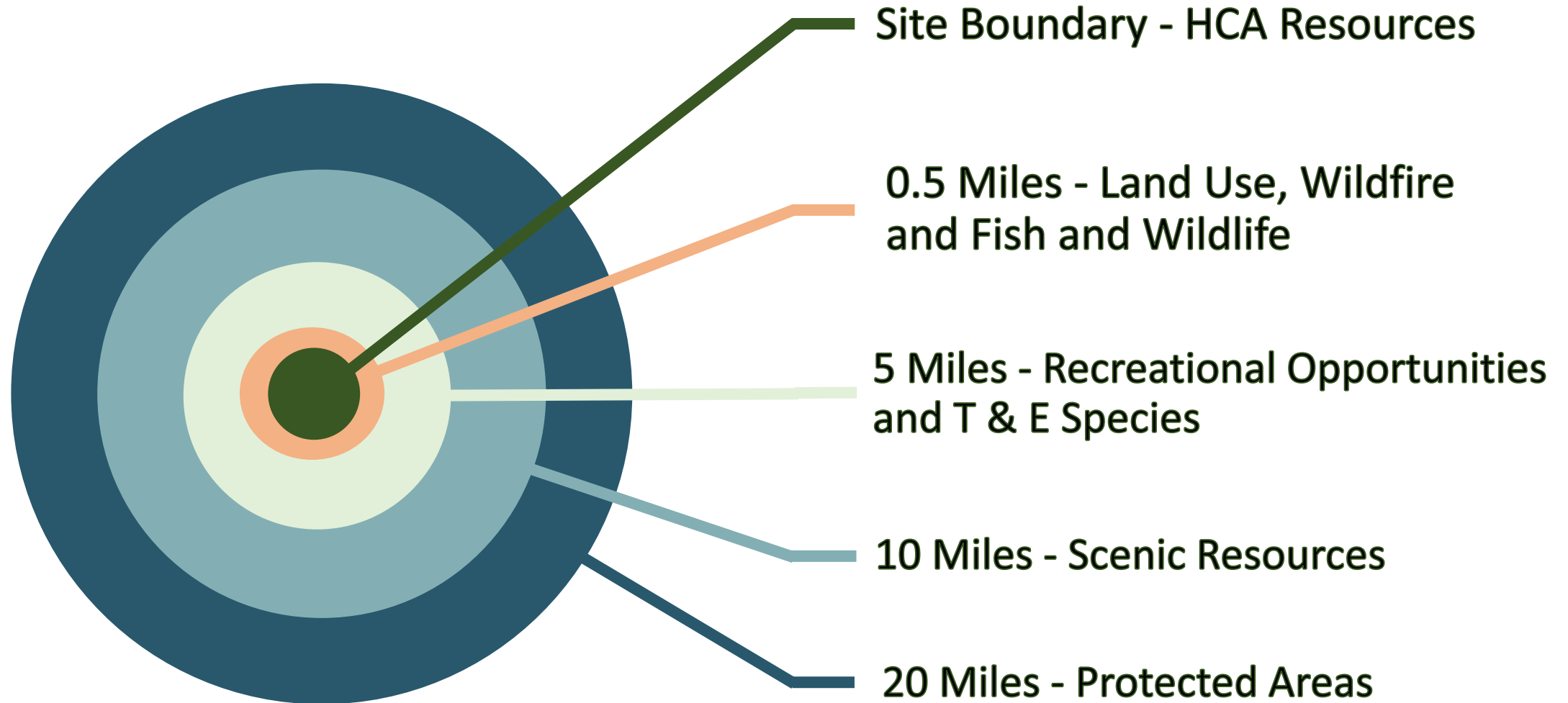
WE ARE HERE

Reviewing Agency Coordination

Reviewing Agencies and Special Advisory Groups:

- Provide comments on the proposed facility within the jurisdiction or expertise of the agency
- Make recommendations regarding the size and location of analysis area(s)
- Identify:
 - Studies that should be conducted to identify potential impacts
 - Statutes, administrative rules, applicable substantive criteria, and local government ordinances administered by the agency
 - Permits administered by the agency that might apply to construction or operation of the proposed facility

NOI Study Area Distances



Land Use

- The applicant may choose to obtain land use approval from EFSC or from the affected local governments.
- NOI indicates applicant intends to seek land use determination from EFSC
- If election changes, interested persons should participate in the local land use process.

Public Comments

- Opportunity for the public to comment on the Notice of Intent is Open. All written comments submitted to ODOE are included in the public record and provided to the applicant.
- Comment period closes on August 11, 2023.
- Oral Comments may be provided during the Q&A Session at this meeting.
- This meeting is not a public hearing, and participation is not required to establish standing to participate in the contested case during the review of the Application for Site Certificate.

Q&A Session/Comments

We will call on you

In Person: Please complete a comment card with your name and contact information and hand it to Erica.

Webinar Participants: The bottom right of the main window is a set of icons.

Click on “Participants”

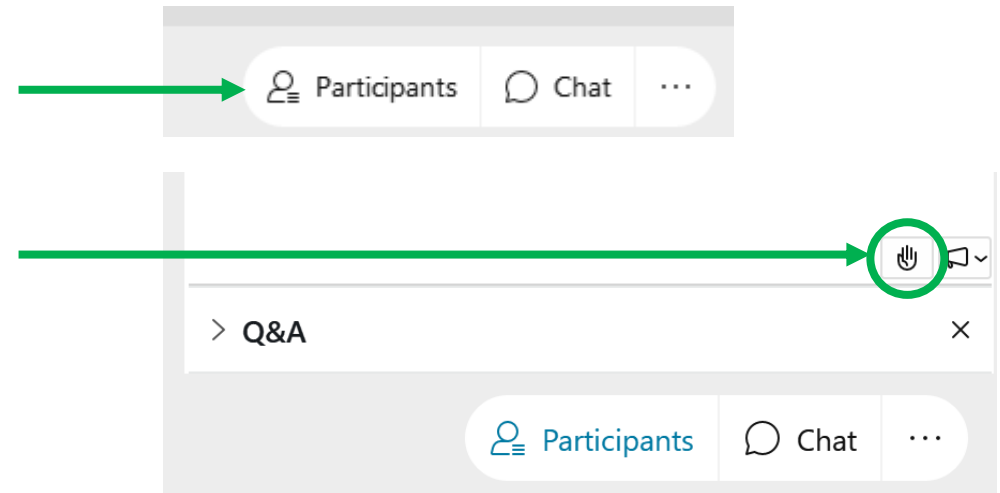
Click on the hand icon in bottom right of the participant window

Clicking on it again will lower your hand.

Phone Participants: We will call on you

Press *3 on your telephone keypad to raise your hand.

Press *3 again on your telephone keypad to lower your hand.



Helpful Resources

Oregon Department of Energy / Energy Facilities & Safety / Facilities

Energy Facility Siting

Home > Siting Public Comment

Siting Public Comment

*** Required Field**

Project Selection

Project *
Please select the project that you are interested in commenting on

[Next](#)

COUNCIL INFORMATION

- About the Council
- Council Jurisdiction
- Council Meetings
- Council Rulemaking
- Compliance Program

ENERGY FACILITIES

- Public Guide
- Siting Project Updates
- Facilities Under EFSC
- Public Comment Portal
- EFSC Facilities Map
- Federal Facilities in Oregon
- About the Siting Process
- Siting Standards
- Siting Statutes & Rules
- Fact Sheets

FACILITIES UNDER REVIEW

- Archway Solar Energy Facility
- Cascade Renewable Transmission System
- Boardman to Hemingway Transmission Line
- Echo Solar Project
- Eugene to Medford Transmission Line
- Nolin Hills Wind Power Project
- Wagon Trail Solar Project

SITING OF ENERGY FACILITIES IN OREGON EFSC Process Flowchart

The Oregon Department of Energy administers the Energy Facility Siting Council facility siting process, which consolidates state agency and local government regulations into a single review process. State agencies and local governments participate throughout the process. The three yellow stages indicate where public participation is encouraged.

Step	Description
Notice of Intent	1. The NOI states the applicant's intention to submit an Application for a Site Certificate and includes general information about the project. It is not an application to construct the facility. 2. The information in the NOI allows reviewing agencies, local governments, and the public to identify applicable requirements and special issues of concern the applicant must address in the application.
Public Comment Period	1. ODOE sends notice of the comment period to affected landowners, reviewing agencies and parties on EFSC's general mailing list. ODOE publishes a public notice in a local newspaper. 2. Information provided during this comment period can help identify issues the applicant must address in the application.
Project Order	1. ODOE issues the Project Order, which defines the analysis area for various types of impacts and identifies the applicable statutes, rules and ordinances the applicant must address in the Application.
Application for a Site Certificate	1. The applicant submits its Application for a Site Certificate which describes the facility, its anticipated impacts and how it will meet EFSC's standards. 2. The applicant must choose to either obtain local land use approval or have the land use decision incorporated into the EFSC process. If an applicant chooses the EFSC option, the applicant must address all applicable local land use criteria in the Application.
Public Information Meeting	1. ODOE staff and the applicant conduct a public information meeting to explain the Application and the EFSC evaluation process.
Draft Proposed Order	1. ODOE issues a Draft Proposed Order that addresses applicable issues identified by state and local agencies and includes preliminary evaluation and findings on whether the Application meets EFSC standards. The Draft Proposed Order includes recommendations to grant, with conditions, or deny a site certificate for the proposed facility.
Public Hearing	1. A hearing officer conducts a public hearing on the Draft Proposed Order. 2. Members of the public and reviewing agencies have the opportunity to testify at the hearing or may submit written comments by the comment deadline. 3. Failure to raise a relevant issue either orally at the hearing or in a timely submitted written comment precludes further participation in the EFSC process.
Proposed Order	1. Following the public hearing, EFSC reviews the Draft Proposed Order during a Council meeting. 2. Based on direction from EFSC, ODOE issues the Proposed Order and Notice of Contested Case.
Contested Case Hearing	1. A hearing officer conducts the contested case proceeding. 2. Only those persons who raised a relevant issue in person at the public hearing or in writing by the comment deadline on the Draft Proposed Order may participate in the contested case. 3. The hearing officer issues a Recommended Contested Case Order.
Final Order and Site Certificate	1. EFSC reviews the hearing officer's Recommended Contested Case Order and issues a Final Order approving or denying the Application for a Site Certificate. If the Council approves the Application, EFSC also issues a Site Certificate. 2. An appeal of the Final Order goes directly to the Oregon Supreme Court.

<https://www.oregon.gov/energy/facilities-safety/Pages/default.aspx>

<https://www.oregon.gov/energy/facilities-safety/facilities/Pages/LPW.aspx>

<https://odoe.powerappsportals.us/en-US/SitingPublicComment/>

13

ODOE Contact

Chase McVeigh-Walker, Senior Siting Analyst
Oregon Department of Energy
550 Capitol St. NE
Salem, OR 97301
(971) 600-5323

Chase.mcveigh-walker@energy.oregon.gov

Muddy Creek Energy Park Notice of Intent – Public Informational Meeting

Brian Tran, Development Manager | Qcells USA Corp.

Patrick Brown, Vice President Project Development | Qcells USA Corp.



Agenda

- › **Introductions**
- › **Who is Qcells USA Corp?**
- › **Facility Overview**
- › **Purpose and Need**
- › **Development Schedule Overview**
- › **Planned Surveys**
- › **Study Area Boundaries**
- › **Agency and Tribal Stakeholders**
- › **Questions/Discussion**

Who is Qcells USA Corp?



Utility-Scale Solar and Battery Storage Projects Developer

Develop & invest utility-scale solar plus battery energy storage system projects in North America



Customized Engineering Procurement Construction (EPC) Services

Along with the module quality, the design and layout of a solar power plant are carefully calibrated



Sustainable Reliability

Expertise in planning & engineering with advanced technology and high quality components



Strong Bankability

Backed by Hanwha Group, Tier 1 Company, Financing Track Record, and Integrated Solar Value Chain

Qcells USA



Office Location	— Irvine, California, United States
Business Type	— Solar and Battery Storage Projects Development & Investment — Electricity Sales — Engineering Procurement Construction Services
Employees	— 100+ (Development/Project Finance/Construction/Project Management/Operations and Maintenance)
History	— Founded in 2011 (Hanwha Solar Energy America Holdings)

Market Presence

— 2021 Top 10 Solar EPC Provider in United States

Rank	Company	MW in 2020	M/S
1	Blattner Energy	2,130	11%
2	Swinerton Renewable Energy	2,088	10%
3	Moss Construction	1,229	6%
4	Mortenson Construction	1,212	6%
5	Engie	746	4%
6	McCarthy Construction	643	3%
7	RES	566	3%
8	Signal Energy	540	3%
9	Hanwha Qcells USA	523	3%
10	Rosendin Electric	403	2%
	Others	10,068	50%
	Total	20,148	100%

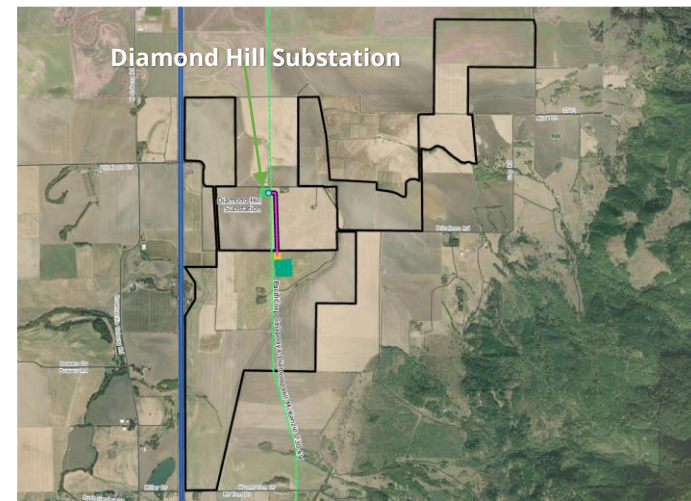
* Source: 2021 IHS Markit report; for All Non-Residential PV Systems (>10kW)

Muddy Creek Energy Park Details

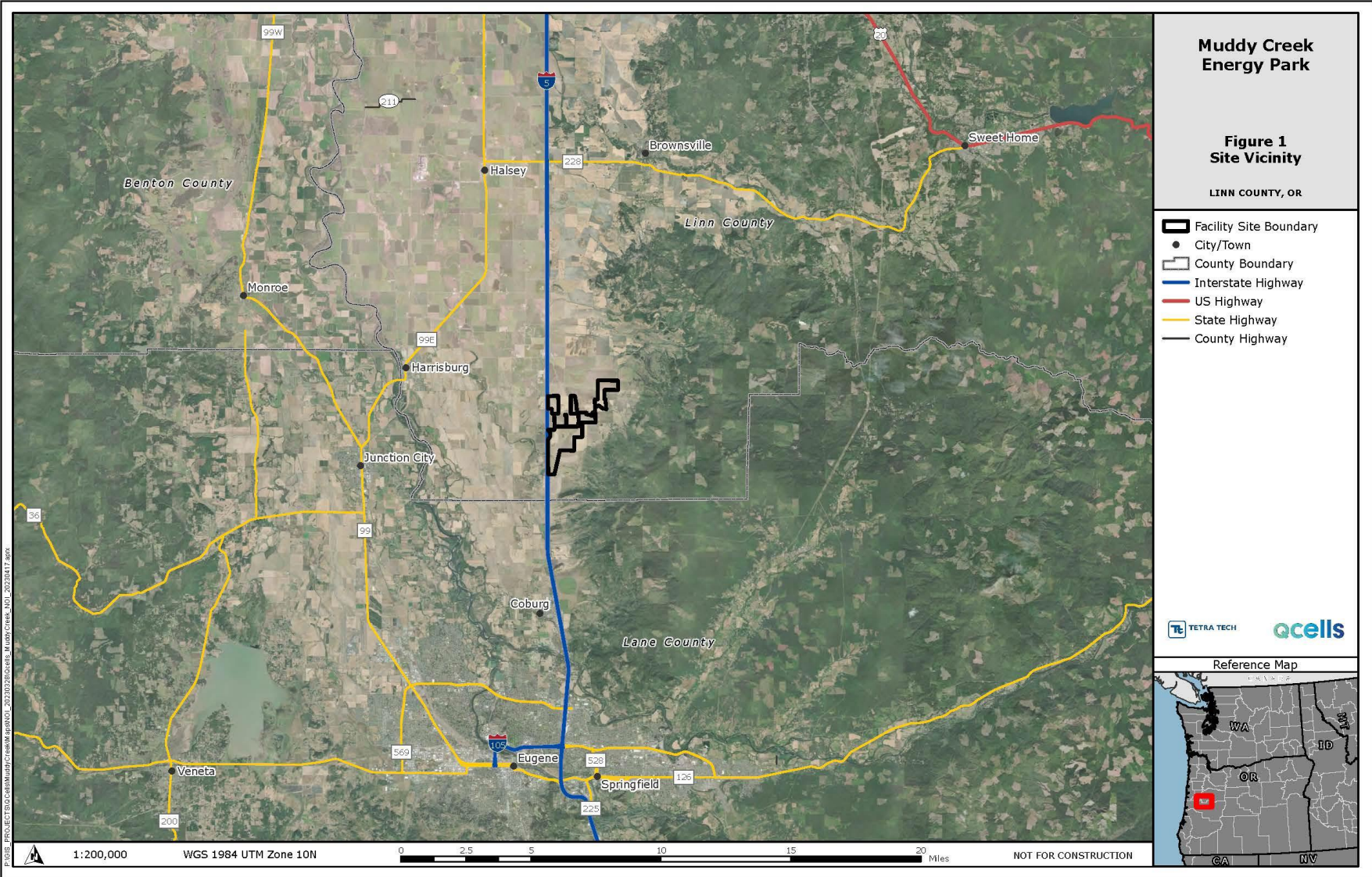
Facility Details

Capacity	<ul style="list-style-type: none">• 199MW_{AC}/ 219MW_{DC} Solar photovoltaic system• 199MW_{AC} Battery Energy Storage System (BESS)
Location	<ul style="list-style-type: none">• 8 miles south of Brownsville, Oregon• Linn County, Oregon
Facility Site Size	<ul style="list-style-type: none">• Facility site boundary ~ 1,588 acres• Anticipated micrositing area ~ 1,100 acres
Site Conditions	<ul style="list-style-type: none">• Existing dryland/nonirrigated ryegrass cultivation• Local grazing
Facility Considerations	<ul style="list-style-type: none">• No irrigation water rights on site• Dual use agrivoltaics (solar/grazing) throughout Facility site
Target Dates	<ul style="list-style-type: none">• Start of Construction (NTP): Q3 2025• Commercial Operations Date: Q4 2026
Substation	<ul style="list-style-type: none">• Diamond Hill, 230kV• Direct interconnection into substation
Interconnection	<ul style="list-style-type: none">• PacifiCorp• Interconnection agreement executed

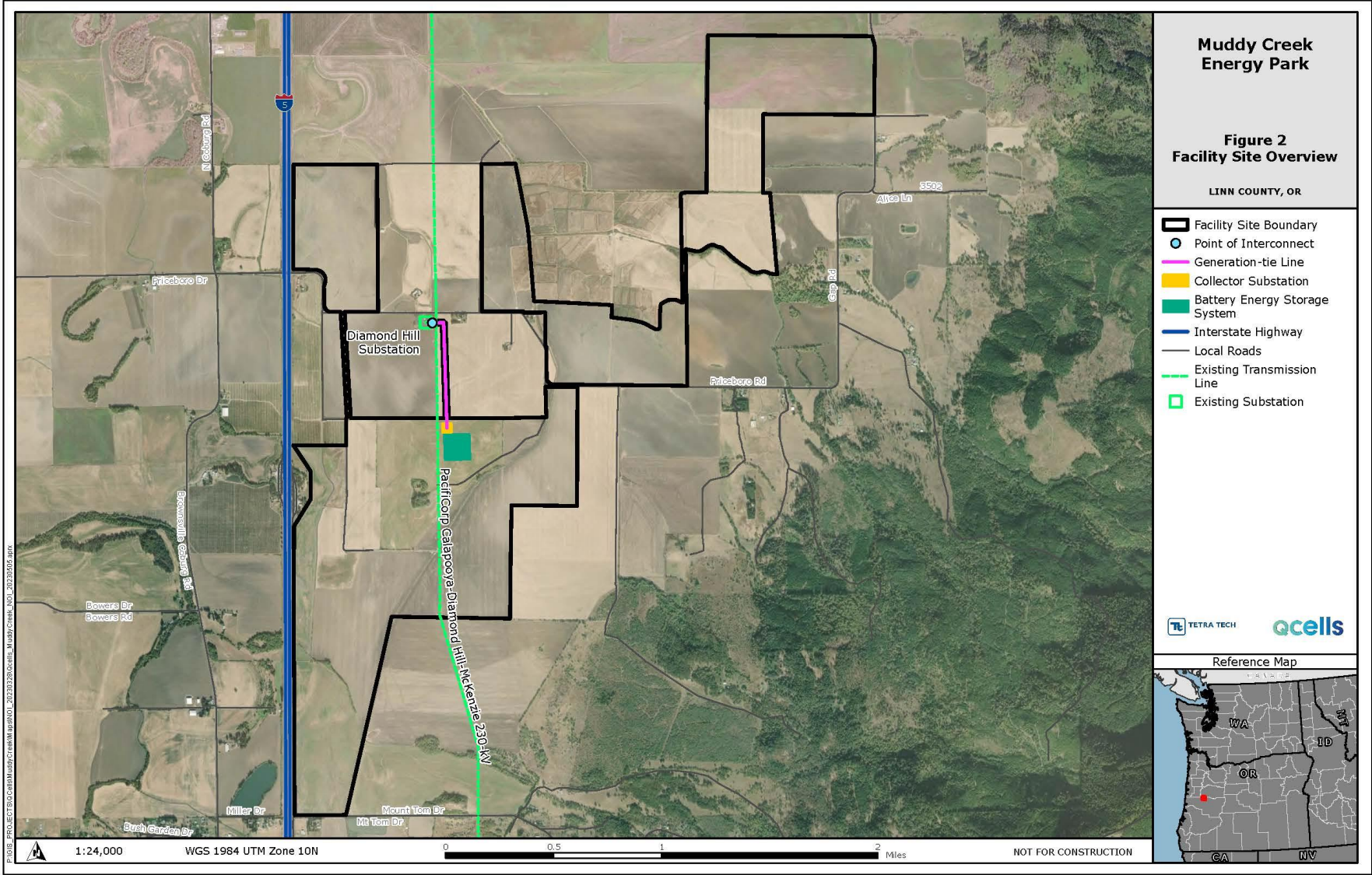
Facility Location



Facility Site Location



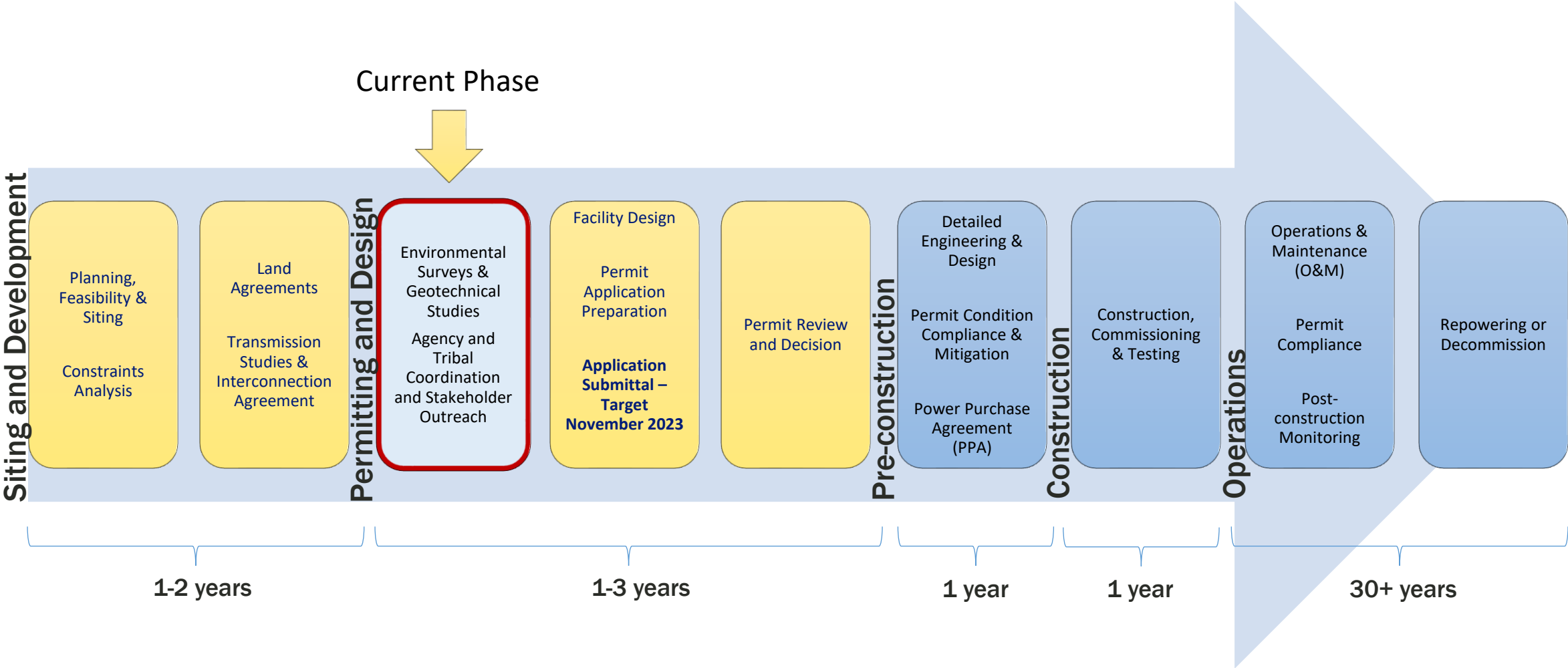
Facility Site Layout Overview



Muddy Creek Energy Park – Purpose and Need

- › Point of interconnect (POI) to the regional electrical grid is PacifiCorp's existing Diamond Hill Substation centered in the Facility site boundary.
 - › Need for additional transmission infrastructure is minimized.
- › Proximity to existing substation keeps costs down.
- › There is a demand for the generation, west of the Cascades.
 - › The Facility will provide power for the equivalent of approximately 34,000 homes in the Willamette Valley.
- › Willing landowners make this Facility possible.
 - › They want to use their land as they see fit, while diversifying their assets, keeping land in agricultural production, and keeping the land in their families for future generations.

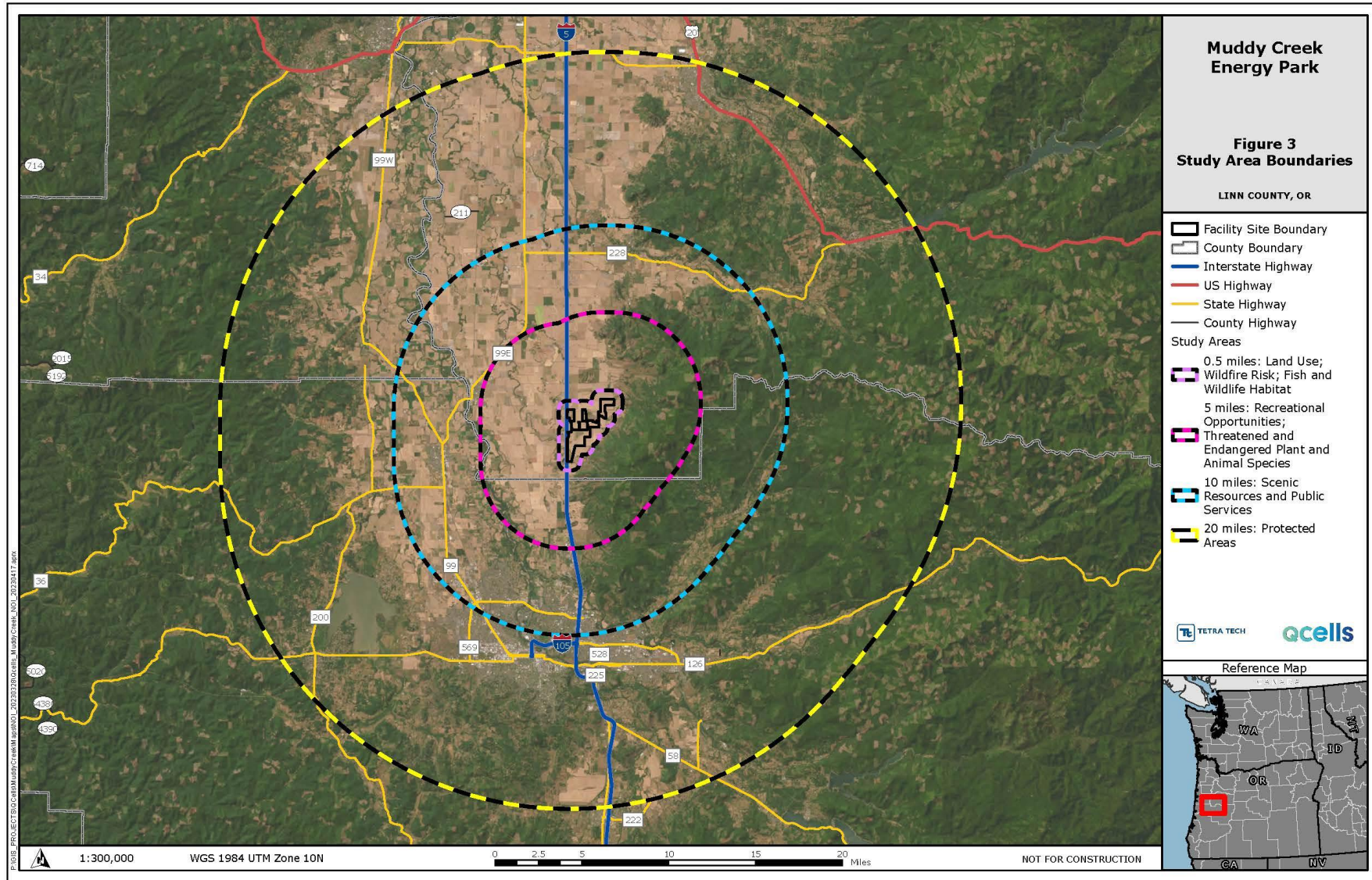
Muddy Creek Energy Park – Development Schedule Overview



Planned Surveys - Overview

- › General Wildlife, Special Status Species, and Habitat (May 2023)
- › Raptor Nest Survey (May 2023)
- › Rare Plant Surveys (May – August 2023)
- › Wetlands and Waters Delineation (Early Summer 2023)
- › Cultural Resources (Summer 2023)
- › Soil Assessment (Summer 2023)
- › Visual, Glare, and Acoustic Assessment (Summer 2023)

Study Area Boundaries



Muddy Creek Energy Park – Agency and Tribal Stakeholders

- › **Local**

- › Linn County
- › Local Fire District

- › **State**

- › Oregon Energy Facility Siting Council (EFSC)
- › Oregon Department of Fish and Wildlife (ODFW)
- › Oregon Department of State Lands (ODSL)
- › Oregon Department of Agriculture (ODA)
- › Oregon Department of Land Conservation and Development (DLCD)
- › Oregon State Historic Preservation Office (SHPO)
- › Oregon Department of Transportation (ODOT)
- › Oregon Department of Environmental Quality (ODEQ)
- › Oregon Department of Geology and Mineral Industries (DOGAMI)

- › **Tribes**

- › Confederated Tribes of Grand Ronde
- › Confederated Tribes of Siletz
- › Confederated Tribes of Warm Springs

- › **Federal**

- › U.S. Army Corps of Engineers (USACE)
- › U.S. Department of Defense (USDOD)
- › U.S. Fish and Wildlife Service (USFWS)

Muddy Creek Energy Park – Other Stakeholders

Ongoing outreach to organizations, Linn County residents. The Facility is known publicly as Coburg Hills Solar Project. A website with public information is here: <https://coburghillsenergy.com/>

- › **Collaborating Stakeholder**

- › Dr. Chad Higgins, Oregon State University

- › **Local**

- › Officials in Linn County (local area legislators, cities/towns, county)
- › Linn County Farm Bureau
- › Chambers of Commerce
- › School Districts
- › IBEW Local 280
- › Residents near to facility
- › Linn County Fair

- › **State**

- › Environmental, conservation and land use groups including: Sustainable Northwest, Coalition of Oregon Land Trusts, Oregon Solar + Storage Industries Association, Community Renewable Energy Association, Renewables Northwest, 1,000 Friends of Oregon, Oregon Association of Conservation Districts, others

Questions / Discussion