

State of Oregon
Department of Public Safety Standards and Training

NFPA Watercraft Rescue
Task Book

Task Book Assigned To:	
Name	DPSST Fire Service #
Agency Name	Date Initiated
Signature of Agency Head or Training Officer	Date Completed

Portions of this evaluation instrument are reprinted with permission from NFPA 1006 – 2021 Edition, “Standard for Technical Rescuer Professional Qualifications”, Copyright 2021. National Fire Protection Association, Quincy, MA 02269. This reprinted material is not the complete and official position of the NFPA on the referenced subject, which is represented only by the standard in its entirety.

Department of Public Safety Standards and Training
4190 Aumsville Hwy SE.
Salem, Oregon 97317
(503) 378-2100

Additional copies of this document may be downloaded from the DPSST web site:
<http://www.oregon.gov/DPSST/FC/FireCertFormFree.shtml>

Revised June 2021

NFPA Watercraft Rescue Signature Page

This signature page is a tool for your agency to document completed tasks. The signature page and documentation should be kept on file at your agency. Please **do not** submit the Task Book or signature page to Department of Public Safety Standards and Training. Only a certified NFPA Technical Rescuer in that specialty area may sign off the Task Book.

Attest: The information contained in this Task Book is true and correct to the best of my knowledge. I understand that falsification of information on this document is subject to penalty under ORS 162.055, et al, and ORS 162.305 and is cause to deny or revoke DPSST fire service professional certification(s).

Technical Rescuer Evaluators: Each Evaluator must document the following information:

Initials	DPSST Fire #	NFPA Technical Rescuer Certification Level	Printed Name	Signature

Task Book Qualification Record Books (Task Book) have been developed for various certification levels within the Oregon Department of Public Safety Standards and Training (DPSST) system. Each Task Book lists the job performance requirements (JPRs) for the specific certification level in a format that allows a candidate to be trained and evaluated during three (3) sequential sessions. Successful performance of all tasks, as observed and recorded by a qualified and approved evaluator will result in the candidate’s eligibility for DPSST certification.

Before a job performance evaluation can be taken, all requisite knowledge and skills must be satisfied. In addition, all task book evaluations must be checked off by a qualified evaluator. When all prescribed requirements have been met, an application for Certification may be forwarded to DPSST. All certificates are mailed to the Training Officer at his/her Fire Service Agency.

TASK BOOK SPECIFICATIONS:

To successfully complete this task book, only an evaluator certified as an NFPA Watercraft Rescue may sign off on the JPR’s. ‘Requisite Knowledge’ sections may be completed during class and signed by the instructor. ‘Requisite Skills’ sections may be conducted and signed at the candidate’s fire agency.

NFPA TASK BOOK INFORMATION:

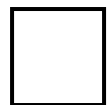
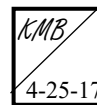
The JPRs covered in this Task Book meet or exceed all NFPA published standards for this certification level at the time of this publication. Mention of NFPA and its standards do not, and are not intended as adoption of—or reference to—NFPA standards. For more information on the complete job performance requirements and data, see the individual DPSST Task Book for that certification level.

HOW TO EVALUATE PERFORMANCE:

Each JPR has one to three corresponding boxes to the right in which to confirm a candidate’s success. The evaluator must indicate successful passing by the candidate of each JPR by initialing and dating.

Example:

22.1.1 Initiate a discipline-specific search, given hazard-specific PPE, equipment pertinent to the search mission, an incident location, and victim investigative information, so that search parameters are established, the victim profile is established, the access and egress of all people either involved in the search or already within the search area are questioned and the information is updated and relayed to command; the personnel assignments match their expertise, all victims are located as quickly as possible, applicable technical rescue concerns are managed, risks to searchers are minimized, and all searchers are accounted for.



TASK BOOK QUALIFICATION RECORD

FOR THE CERTIFICATION LEVEL OF

NFPA Watercraft Rescue

Prior to becoming certified in this position, the candidate must successfully complete the following Job Performance Requirements (JPR). For each JPR there are requisite knowledge and skill requirements. The evaluator must initial and date in the box provided to indicate the meeting of those requirements.

22.1 * Awareness Level. Prior to qualification at the awareness level in watercraft rescue, the individual shall meet the requirements defined in Section 22.1.

22.1.1 Initiate a discipline-specific search, given hazard-specific PPE, equipment pertinent to the search mission, an incident location, and victim investigative information, so that search parameters are established, the victim profile is established, the access and egress of all people either involved in the search or already within the search area are questioned and the information is updated and relayed to command; the personnel assignments match their expertise, all victims are located as quickly as possible, applicable technical rescue concerns are managed, risks to searchers are minimized, and all searchers are accounted for.

(A) Requisite Knowledge. Local policies and procedures and how to operate in the site-specific search environment.

(B) Requisite Skills. The ability to enter, maneuver in, and exit the search environment and provide for and perform self-escape and self-rescue.

22.1.2 * Perform ground support operations for helicopter activities, given a rescue scenario/incident, helicopter, operational plans, PPE, requisite equipment, and available specialized resources, so that rescue personnel are aware of the operational characteristics of the aircraft and demonstrate operational proficiency in establishing and securing landing zones and communicating with aircraft personnel until the assignment is complete.

(A) Requisite Knowledge. Ground support operations relating to helicopter use and deployment, operation plans for helicopter service activities, type-specific PPE, aircraft familiarization and hazard areas specific to helicopters, scene control and landing zone requirements, aircraft safety systems, and communications protocols.

(B) Requisite Skills. The ability to provide ground support operations, review standard operating procedures for helicopter operations, use PPE, establish and control landing zones, and communicate with aircrews.

22.1.3 The ability to provide ground support operations, review standard operating procedures for helicopter operations, use PPE, establish and control landing zones, and communicate with aircrews.

(A) Requisite Knowledge. Hazards present on and near the water and aboard watercraft used by the AHJ including those presented by weather, current, water conditions, and the capacities.

(B) Requisite Skills. Ability to locate, identify, and don PPE and flotation devices.

22.1.4 Maintain watercraft stability, given a selected watercraft used by the AHJ, so that the stability of the craft is not compromised, the possibility of a fall is minimized, and the rescuer is protected from harm.

(A) Requisite Knowledge. Elements that affect the stability of watercraft, including mass, center of gravity, weight distribution, impact loads, current, sail area, and wind and water conditions.

(B) Requisite Skills. Boarding and exiting a watercraft in a manner that prevents injury and minimizes the impact on the stability of the watercraft.

22.1.5 Size up a watercraft rescue incident, given background information and applicable reference materials, so that the scope of the rescue is determined, the number of victims is identified, the last reported location of all the victims is established, witnesses and reporting parties are identified and interviewed, resource needs are assessed, primary search parameters are identified, and information required to develop an initial incident action plan is obtained.

(A) Requisite Knowledge. Types of reference materials and their uses, availability and capability of the resources, elements of an incident action plan and related information, relationship of the size-up to the incident management system, information gathering techniques and how that information is used in the size-up process, and basic search criteria for watercraft rescue incidents.

(B) Requisite Skills. The ability to read technical rescue reference materials, gather information, use interview techniques, relay information, and use information-gathering sources.

22.1.6 Recognize incident hazards and initiate isolation procedures, given scene control barriers, personal protective equipment (PPE), requisite equipment, and available specialized resources, so that all hazards are identified; resource application fits the operational requirements; hazard isolation is considered; risks to rescuers, bystanders, and victims are minimized; and rescue time constraints are taken into account.

(A) Requisite Knowledge. Resource capabilities and limitations; types and nature of incident hazards; equipment types and their use; isolation terminology, methods, equipment, and implementation; operational requirement concerns; common types of rescuer and victim risks; risk/benefit analysis methods and practices; hazard recognition, isolation methods, and terminology; methods for controlling access to the scene; and types of technical references.

(B) Requisite Skills. The ability to identify resource capabilities and limitations, identify incident hazards, assess potential hazards to rescuers and bystanders, place scene control barriers, and operate control and mitigation equipment.

22.1.7 Recognize the need for technical rescue resources at an operations- or technician-level incident, given AHJ guidelines, so that the need for additional resources is identified, the response system is initiated, the scene is secured and rendered safe until additional resources arrive, and awareness-level personnel are incorporated into the operational plan.

(A) Requisite Knowledge. Operational protocols, specific planning forms, types of incidents common to the AHJ, hazards, incident support operations and resources, and safety measures.

(B) Requisite Skills. The ability to apply operational protocols, select specific planning forms based on the types of incidents, identify and evaluate various types of hazards within the AHJ, request support and resources, and determine the required safety measures.

22.1.8 Support an operations- or technician-level incident, given an incident, an assignment, an incident action plan, and resources from the tool kit, so that the assignment is carried out, progress is reported to command, environmental

concerns are managed, personnel rehabilitation is facilitated, and the incident action plan is supported.

(A) Requisite Knowledge. AHJ operational protocols, hazard recognition, incident management, PPE selection, resource selection and use, and scene support requirements.

(B) Requisite Skills. The ability to apply operational protocols, function within an incident management system, follow and implement an incident action plan, and report the task progress status to a supervisor or incident command.

22.2 * Operations Level. The job performance requirements defined in Sections 22.1 and 22.2 shall be met prior to or during operations-level qualification in watercraft rescue.

22.2.1 Identify the types of watercraft, given a list of watercraft used by the organization, so that their limitations, capabilities, load ratings, performance criteria, and considerations for their deployment and recovery in the intended environment are identified.

(A) Requisite Knowledge. Types of watercraft used by the organization and the qualities and attributes of each craft that affect how it is utilized in the intended environment; inherent conditions of the intended environment including wind, current, and water conditions that affect vessel selection and use; mission scope and tactical objectives that affect watercraft selection.

(B) Requisite Skills. Identify watercraft characteristics such as draft, sail area, method of propulsion, size, weight, method of deployment, and configuration that affect its selection for use in a specific environment for a specific mission.

22.2.2 Identify the configuration of watercraft given a watercraft available to the agency so that the location of access and egress points, propulsion system components, steering controls, communication equipment, emergency equipment, through hull and deck fittings, portals, and fittings necessary for water- and weathertight integrity are located.

(A) Requisite Knowledge. Location of equipment, watercraft components, and configuration of watercraft.

(B) Requisite Skills. Identify fittings, portals, and other equipment.

22.2.3 Use the available methods of communicating between the watercraft and other rescuers in the water, on shore, in other watercraft, and in aircraft as applicable given communication tools, so that routine mission-related information and emergency messages are communicated to the intended recipient.

(A) Requisite Knowledge. Methods of communication available to rescuer and their limitations given specific weather conditions, visibility, and distances from the intended recipient.

(B) Requisite Skills. Select utilize available communication tools such as radios, hand signals, lights, audible signals, and loud hailers for the specific environment to communicate information.

22.2.4 Identify conditions that require the notification of local and federal authorities, given conditions that require their involvement, including vessels in distress, hazards to navigation, release of hazardous or toxic substances, and other conditions that affect the health and safety of those in and around navigable waters, so that the proper agency is notified and relevant information is communicated.

(A) Requisite Knowledge. Laws, regulations, and standards the identify conditions that require notification of outside agencies, the method of notification, and required other actions.

(B) Requisite Skills. Identification of specific conditions that require notification of outside agencies and perform methods for their notification.

22.2.5 Interpret navigational aids given marine lights, structures and markings on land, other vessels, or on the water, so that nautical landmarks and other vessels are identified, intended course is selected, and collisions are avoided.

(A) Requisite Knowledge. Appearance and color of visual aids and navigation markers and their meaning.

(B) Requisite Skills. Interpret markers, lights, and signals to determine a course that will avoid other vessels.

22.2.6 Perform self-rescue and survival swimming skills so that flotation is maintained, body heat is conserved, and egress is accomplished.

(A) Requisite Knowledge. Effects of hypothermia and cold water immersion and survival skills.

(B) Requisite Skills. Performing techniques to float and move through the water to reach a point of egress or await rescue while conserving body heat.

22.2.7 Use of hazard-specific PPE, given a watercraft rescue incident/scenario, so that the PPE is used in accordance with AHJ policies relative to the specific incident/scenario, PPE emergency escape procedures are followed, and distress signals are communicated.

(A) Requisite Knowledge. The capabilities and limitations of hazard-specific PPE and personal flotation devices, distress signals, emergency escape procedures, and preoperational checklists for the PPE.

(B) Requisite Skills. Ability to don and doff PPE and personal flotation devices, including water rescue helmets and water insulating garments; communicate distress signals; follow emergency escape procedures for the PPE; use preoperational checklists for the PPE.

22.2.8 Navigate a watercraft as a helmsman given a watercraft, navigation tools, and a plotted course, so that the course is followed, obstacles and other vessels are avoided, wind and currents accounted for, awareness of position is maintained, and the destination is reached.

(A) Requisite Knowledge. Operation of the controls relevant to the watercraft and how they affect speed and direction of the vessel; how the associated navigational tools, such as compass and GPS devices, function and are interpreted; marking on charts or plotters and their meanings; and the effects of local water, wind, and weather conditions on the direction and speed of the watercraft.

(B) Requisite Skills. Operate the controls of the watercraft and use the navigational tools and indicators on the watercraft, and select a heading and speed for the vessel for the existing conditions so that it follows its intended course.

22.2.9 Perform docking or watercraft recovery operations given a watercraft and an operator so that communication is maintained with the operator, current and wind are accounted for mooring lines and fenders are rigged, the dock or slip and watercraft are protected from impacts, and the vessel is positioned properly at the slip and secured from unintended movement.

(A) Requisite Knowledge. Methods for securing a watercraft and rigging fenders to prevent damage and minimize undesired movement of the watercraft; means of maneuvering a watercraft using lines or other external systems to position the watercraft as desired; how wind, weather, and water conditions affect watercraft movement as it approaches the slip and after being secured; and considerations for specialized tools or conveyances used to recover watercraft such as trailers, jet docks, and davits.

(B) Requisite Skills. Rigging lines and tying knots, bends, and hitches related to mooring; securing and maneuvering vessels into or at a moorage location or conveyance; predicting direction and speed of approach to a moorage conveyance based on the boat operator actions; and the effects of wind, weather, and wave actions.

22.2.10 Launch a watercraft from a pier, dock, slip, trailer, or other conveyance, given a watercraft and an operator, so that communication is maintained with the operator, current and wind are accounted for, mooring lines are managed, and equipment is secured against unintended movement.

(A) Requisite Knowledge. Methods for launching or deploying a watercraft and rigging, and securing equipment to prevent damage and minimize undesired movement of the watercraft; means of maneuvering a watercraft using lines or other external systems to position the watercraft as desired; how wind, weather, and water conditions affect watercraft movement as it leaves the slip and after being deployed; and considerations for specialized tools or conveyances used to deploy watercraft such as trailers, jet docks, and davits.

(B) Requisite Skills. Rigging lines and tying knots, bends, and hitches related to mooring and maneuvering vessels into or at a moorage location or conveyance; predicting direction and speed of vessel departing from a moorage or conveyance based on the boat operator actions; and the effects of wind, weather, and wave action.

22.2.11 Perform anchoring operations given a watercraft, an operator, and anchoring equipment, so that the anchor is deployed to prevent vessel movement; and anchor swing, weather, and current and tide change is are accounted for.

(A) Requisite Knowledge. Techniques for setting anchor, requirements for anchor size, line length for the vessel and weather conditions, and the effects of vessel movement while at anchor.

(B) Requisite Skills. Set an anchor to minimize the potential for drag, and pay out anchor line to ensure proper scope is achieved for weather and tide changes.

22.2.12 Perform procedures for a crew overboard (COB) event so that the incident is communicated to the operator, visual location of the subject is maintained, the location is marked, and recovery of the subject is accomplished.

(A) Requisite Knowledge. Vessel procedures for man overboard, methods of communication of COB event to operator, crew tactics for marking location to assist with returning to location of event, and effects of immersion and hypothermia.

(B) Requisite Skills. Deploy a surface marker or utilize other methods for marking the location of the COB event, deploy flotation aid to the member, perform operations specific to maneuvering the vessel and preparing to recover the subject, and perform recovery operations.

22.2.13 Perform procedures for launching and recovery of in-water rescuers given a watercraft available to the agency, in-water rescuers and a watercraft operator so that the watercraft is not broached, control of the watercraft is maintained so that the rescuers are deployed and recovered at the designated location and are protected from injury.

(A) Requisite Knowledge. Watercraft specific procedures for deploying and recovering rescuers, including methods for avoiding contact with propulsion elements of the watercraft and uncontrolled falls or potential for entanglement on entry or exit.

(B) Requisite Skills. Rig or configure elements of the watercraft required for launching or recovery of rescuers, manage the operation of propulsion systems and other mechanical elements of the watercraft, and coordinate vessel movement and location so the rescuers are deployed and recovered at the desired location.

22.2.14 Perform a watercraft-based rescue of an incapacitated water bound victim given a watercraft that is available to the team, a water rescue tool kit, a means of securement, and water rescue PPE, so that the watercraft is not broached; control of the watercraft is maintained; risks to the victim and rescuers are minimized; and the victim is removed from the hazard.

(A) Requisite Knowledge. Watercraft-specific procedures for recovering victims, including methods for avoiding contact with

propulsion elements of the watercraft and uncontrolled falls or potential for entanglement on recovery.

(B) Requisite Skills. Rig or configure elements of the watercraft required for recovery of a victim, manage the operation of propulsion systems and other mechanical elements of the watercraft, and coordinate vessel movement and location so the victim is recovered at the desired location.

22.2.15 Perform procedures to take another watercraft under tow so that the relative sizes of both watercraft are considered; neither vessel is broached; wind, weather, and water conditions are accounted for; lines are connected between the vessels; maneuverability and control are maintained; and the watercraft is protected from damage.

(A) Requisite Knowledge. Watercraft-specific procedures for taking a vehicle under tow, including rigging methods, anchor locations, methods for chafe and impact protection; watercraft handling dynamics while towing; propulsion capacities and impact of wind, weather, and water conditions on combined mass and surface area of both vessels; limitations on size and weight of vessel being towed.

(B) Requisite Skills. Rig lines; impact and chafe protection; control movement and direction of watercraft under tow; monitor position and condition of vessel under tow; and communicate with watercraft operator to maneuver the watercraft.

22.2.16 Perform emergency procedures for a watercraft, given a watercraft available to the agency and emergency equipment so that help is summoned, emergency actions are taken, and risks to the occupants of the vessel are minimized.

(A) Requisite Knowledge. Location of emergency equipment such as signaling devices, fire extinguishers, distress beacons, life rafts, PFDs, exposure suits, and other related equipment and how to operate and deploy them.

(B) Requisite Skills. Deploy and activate life safety and emergency equipment.

22.2.17 Conduct dewatering operations, given a watercraft available to the jurisdiction and dewatering equipment so that undesired water is reduced or eliminated in the watercraft, vessel stability is maintained, and damage to the watercraft is prevented.

(A) Requisite Knowledge. Watercraft specific dewatering plan, operation of onboard dewatering equipment, and effects of excessive water on stability and seaworthiness of the watercraft.

(B) Requisite Skills. Operate onboard dewatering equipment to remove water from the vessel.

22.2.18 * Terminate an incident, given PPE specific to the incident, isolation barriers, and tool kit, so that rescuers and bystanders are protected and accounted for during termination operations; the party responsible is notified of any modification or damage created during the operational period; documentation of loss or material use is accounted for, scene documentation is performed, and scene control is transferred to a responsible party; potential or existing hazards are communicated to that responsible party; debriefing and postincident analysis and critique are considered; and command is terminated.

(A) Requisite Knowledge. PPE characteristics, hazard and risk identification, isolation techniques, statutory requirements identifying responsible parties, accountability system use, reporting methods, and postincident analysis techniques.

(B) Requisite Skills. Ability to select and use of hazard-specific PPE; decontamination of PPE; use barrier protection techniques, data collection, and record-keeping/reporting protocols; and postincident analysis activities.

22.3 * Technician Level. The job performance requirements defined in Sections 22.2 and 22.3 shall be met prior to or during technician-level qualification in watercraft rescue.

22.3.1 Prepare a watercraft to get underway, given a watercraft available to the agency so that preoperational checks are performed, systems are energized, propulsions systems started, functional checks are conducted, and the watercraft is ready to be deployed.

(A) Requisite Knowledge. Watercraft system operational procedures and readiness checks.

(B) Requisite Skills. Check proper fluid levels, charges, connections, and lubrication of systems and connections.

22.3.2 Operate a watercraft to perform tasks typical of the mission defined by the AHJ in conditions representative of the waters and weather common to the jurisdiction, given a watercraft available to the agency so that the objectives are

achieved, the occupants and crew are protected from harm, and damage to the watercraft is prevented.

(A) Requisite Knowledge. Vessel-specific policies and procedures for operating the watercraft; capabilities and limitations of the watercraft; common wind, weather, and water conditions for the jurisdiction.

(B) Requisite Skills. Operate the controls of the watercraft and maneuver to achieve the objective while preventing damage to the watercraft or other vessels.

22.3.3 Plot a course given navigational tools and charts so that heading, speed, and course are determined and wind, weather, current, and water conditions are taken into account.

(A) Requisite Knowledge. How to operate conventional and electronic navigation tools used by the agency.

(B) Requisite Skills. Determine location, heading, and speed to achieve the desired course.

22.3.4 Operate the watercraft while performing docking or watercraft recovery operations, given a watercraft and watercraft crewmember(s) so that communication is maintained with the crew, current and wind are accounted for, and the vessel is positioned properly at the slip and secured from unintended movement.

(A) Requisite Knowledge. Methods for maneuvering or approaching moorage; how wind, weather, and water conditions affect watercraft movement as it approaches the slip and after being secured; and considerations for specialized tools or conveyances used to recover watercraft such as trailers, jet docks, and davits.

(B) Requisite Skills. Control and maneuver vessel into or at a moorage location or conveyance, predicting direction and speed of approach to a moorage conveyance based on the boat operator actions and the effect of wind, weather, and wave actions.

22.3.5 Operate a watercraft as it is launched or deployed from a pier, dock, slip, trailer, or other conveyance, given a watercraft and watercraft crewmember(s) so that communication is maintained with the crew, current and wind are accounted for, and damage to the watercraft is prevented.

(A) Requisite Knowledge. Methods for maneuvering and operating the watercraft while launching or deploying a watercraft so it is positioned as desired, how wind, weather, and water conditions affect watercraft movement as it leaves the slip and after being deployed; and considerations for specialized tools or conveyances used to deploy watercraft such as trailers, jet docks, and davits.

(B) Requisite Skills. Maneuvering while departing the moorage location, predicting direction and speed of departure from a moorage or conveyance based on conditions, the characteristics of the watercraft, and the effect of wind weather and wave action.

22.3.6 Operate a watercraft to conduct anchoring operations, given a watercraft, watercraft crewmember(s), and anchoring equipment so that the anchor is deployed to prevent vessel movement; and anchor swing, weather, current, and tide change are accounted for.

(A) Requisite Knowledge. Techniques for setting anchor, requirements for anchor size and line length for the vessel, weather conditions, and the impact of vessel movement while at anchor.

(B) Requisite Skills. Set an anchor to minimize the potential for drag, and pay out anchor line to ensure proper scope is achieved for weather and tide changes.

22.3.7 Operate a watercraft in response to a COB event, given a watercraft available to the agency and watercraft crewmember(s) so that the incident is communicated to the operator, visual location of the subject is maintained, the location is marked, and recovery of the subject is accomplished.

(A) Requisite Knowledge. Vessel procedures for man overboard, methods of communication of COB event to the crew and tactics for noting COB locations to assist with returning to location of event, methods of quickly maneuvering the watercraft back to the COB location.

(B) Requisite Skills. Note location of the COB event using traditional or electronic methods, maneuvering the vessel to return to the COB location, and approaching the target area to recover the subject.

22.3.8 Operate a watercraft to deploy and recover in-water rescuers, given a watercraft available to the agency, in-water rescuers and watercraft crewmember(s) so that the

watercraft is not broached; control of the watercraft is maintained so that the rescuers are deployed and recovered at the designated location and are protected from injury.

(A) Requisite Knowledge. Watercraft-specific procedures for deploying and recovering rescuers, including methods for avoiding contact with propulsion elements of the watercraft and uncontrolled falls or potential for entanglement on entry or exit.

(B) Requisite Skills. Maneuver and control a watercraft, manage the operation of propulsion systems and other mechanical elements of the watercraft, coordinate vessel movement and location so the rescuers are deployed and recovered at the desired location.

22.3.9 Operate a watercraft to perform a rescue of an incapacitated water-bound victim, given a watercraft that is available to the team, a water rescue tool kit, watercraft crew member(s), a means of securement, and water rescue PPE, so that the watercraft is not broached; control of the watercraft is maintained; risks to the victim and rescuers are minimized; and the victim is removed from the hazard.

(A) Requisite Knowledge. Watercraft-specific procedures for recovering victims, including methods for approach, avoiding contact with propulsion elements of the watercraft, and communication methods with crew.

(B) Requisite Skills. Maneuver watercraft while approaching water-bound victim, manage the operation of propulsion systems and other mechanical elements of the watercraft, coordinate vessel movement and location so the victim is recovered at the desired location.

22.3.10 Operate a watercraft with another watercraft under tow, given a watercraft available to the agency and water rescue crewmember(s) so that the relative sizes of both watercraft are considered,; neither vessel is broached; wind, weather, and water conditions are accounted for; lines are connected between the vessels; maneuverability and control are maintained; and the watercraft is protected from damage.

(A) Requisite Knowledge. Watercraft-specific procedures for taking a vehicle under tow; watercraft handling dynamics while towing; propulsion capacities and impact of wind, weather, and water conditions on combined mass and surface area of both vessels; limitations on size and weight of vessel being towed.

(B) Requisite Skills. Control movement and direction of the watercraft and the watercraft under tow, monitor position and condition of vessel under tow, and communicate with crewmembers to maneuver the watercraft.

22.3.11 Operate ancillary navigation and electronic systems given a watercraft available to the agency so that the objective is achieved and the desired information is obtained.

(A) Requisite Knowledge. Watercraft- and agency-specific procedures for the use of radar, plotters, and visual aids.

(B) Requisite Skills. Operate equipment specific to the watercraft and the agency such as radar, plotters, and forward looking infrared radar (FLIR).

22.3.12 Shut down a watercraft, given a watercraft available to the agency, so that postshutdown checks are conducted, and the craft is secured and protected from damage and tampering.

(A) Requisite Knowledge. Agency-specific procedures for watercraft operations; shutdown procedures for propulsion and ancillary systems; methods of securing craft from unwanted movement, theft, and vandalism; connecting and ensuring shore systems are operational.

(B) Requisite Skills. Tie knots, bends, and hitches required to moor or secure craft for long-term storage; use conveyances such as trailers, davits, or jet docks that the agency might use for storing or securing the craft; activate or operate systems that control or maintain the environment inside the craft, such as climate control and bilge monitoring systems; and connect and verify operation of shore support systems such as ac power.