

**GOVERNING BOARD SPECIAL MEETING**  
**OREGON DEPARTMENT OF GEOLOGY AND MINERAL INDUSTRIES**

**July 13, 2022**  
**3:00 p.m.**

**Teleconference Public Meeting Agenda**

This public meeting will be conducted as a virtual meeting. Written testimony can be submitted in advance, but no later than 4:15 p.m. on the meeting day to [lori.calarruda@dogami.oregon.gov](mailto:lori.calarruda@dogami.oregon.gov). Written comments received will be distributed to the Board.

**Dial: 1-253-215-8782**

**When prompted, enter ID number: 867 4313 0311**

**If prompted for a Password: 565678**

The Board makes every attempt to hold strictly to the sequence of the distributed agenda. Times and topics may change up to the last minute. This agenda is available on the DOGAMI website: [www.oregon.gov/dogami](http://www.oregon.gov/dogami).

- |                  |                |   |
|------------------|----------------|---|
| <b>3:00 p.m.</b> | <b>Item 1:</b> | <b>Call to Order</b> – Chair Scott Ashford  |
| <b>3:05 p.m.</b> | <b>Item 2:</b> | <b>Introductions</b> – Chair Scott Ashford and Staff  |
| <b>3:10 p.m.</b> | <b>Item 3:</b> | <b>Review 2023-25 Agency Request Budget (ARB)</b> – Steve Dahlberg, Chief Financial Officer<br><br>Board Action: The Board will be asked to take an action on this item |
| <b>4:10 p.m.</b> | <b>Item 4:</b> | <b>Public Comment</b><br><br>Only <u>written comments</u> received prior to or by 4:15 p.m. on the day of the meeting will be accepted                                  |
| <b>4:15 p.m.</b> | <b>Item 5:</b> | <b>Board Adjourn</b>  |

---

**PLEASE NOTE**

**AGENDA**

The Board meeting will begin at 3:00 p.m. and proceed chronologically through the agenda. Times listed on the agenda are approximate. At the discretion of the chair, the time and order of agenda items—including addition of intermittent breaks—may change to maintain meeting flow.

**PUBLIC TESTIMONY**

For this special meeting, only written comments will be accepted.

**REASONABLE ACCOMMODATION OF DISABILITIES**

Please contact us at least three business days prior to the meeting to let us know if you need reasonable accommodations. Contact the Director's Office at (971) 673-1555 to make your request.

# Staff Report and Memorandum

---

To: Chair, Vice-Chair, and members of the DOGAMI Governing Board

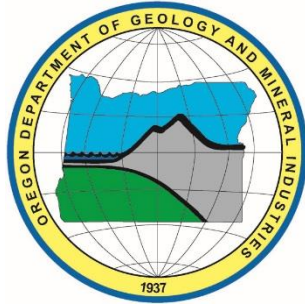
From: Steve Dahlberg, Chief Financial Officer

Date: July 7, 2022

**Regarding: Agenda Item 3 – Review 2023-25 Agency Request Budget (ARB)**

Steve Dahlberg, Chief Financial Officer, will review the 2023-25 Agency Request Budget (ARB) for DOGAMI.

***Proposed Board Action: The Board moves to approve the DOGAMI Governing Board authorizes Chair Ashford to sign and certify the DOGAMI 2023-2025 Agency Request Budget on behalf of the Governing Board.***



# OREGON DEPARTMENT OF GEOLOGY AND MINERAL INDUSTRIES

**2023-25 Agency Request Budget  
(Preliminary & Unaudited)**

---

# BUDGET NARRATIVE

## LEGISLATIVE ACTION

House Bill 5010: March 22<sup>nd</sup> 2021

81<sup>st</sup> OREGON LEGISLATIVE ASSEMBLY--2021 Regular Session

### Enrolled

## House Bill 5010

Introduced and printed pursuant to House Rule 12.00. Pre-session filed (at the request of Oregon Department of Administrative Services)

CHAPTER .....

### AN ACT

Relating to the financial administration of the State Department of Geology and Mineral Industries; and declaring an emergency.

#### Be It Enacted by the People of the State of Oregon:

**SECTION 1.** There is appropriated to the State Department of Geology and Mineral Industries, for the biennium beginning July 1, 2021, out of the General Fund, the amount of \$5,986,843 for operations of the department.

**SECTION 2.** Notwithstanding any other law limiting expenditures, the following amounts are established for the biennium beginning July 1, 2021, as the maximum limits for payment of expenses from fees, moneys or other revenues, including Miscellaneous Receipts and federal funds for contract services, but excluding lottery funds and federal funds not described in this section, collected or received by the State Department of Geology and Mineral Industries, for the following purposes:

- (1) Geologic survey..... \$ 2,648,281
- (2) Mined land reclamation ..... \$ 4,221,055

**SECTION 3.** Notwithstanding any other law limiting expenditures, the amount of \$5,927,333 is established for the biennium beginning July 1, 2021, as the maximum limit for payment of expenses from federal funds other than those described in section 2 of this 2021 Act, collected or received by the State Department of Geology and Mineral Industries.

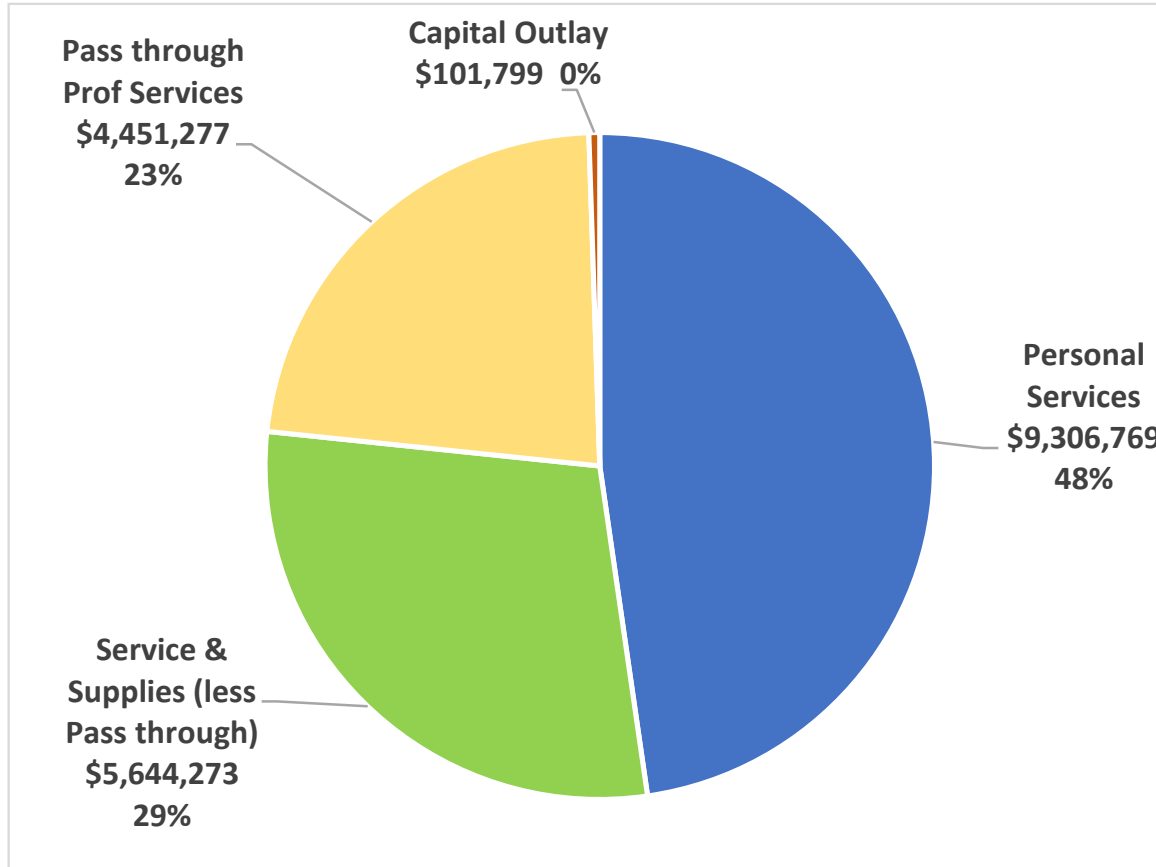
**SECTION 4.** This 2021 Act being necessary for the immediate preservation of the public peace, health and safety, an emergency is declared to exist, and this 2021 Act takes effect July 1, 2021.

# BUDGET NARRATIVE

## AGENCY SUMMARY

### Agency Summary Narrative

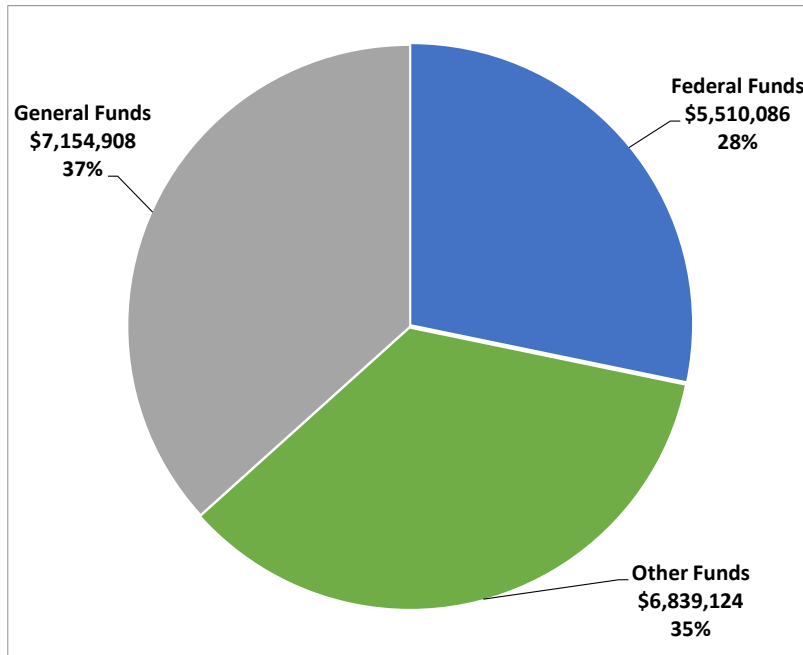
#### Budget Summary Graphics



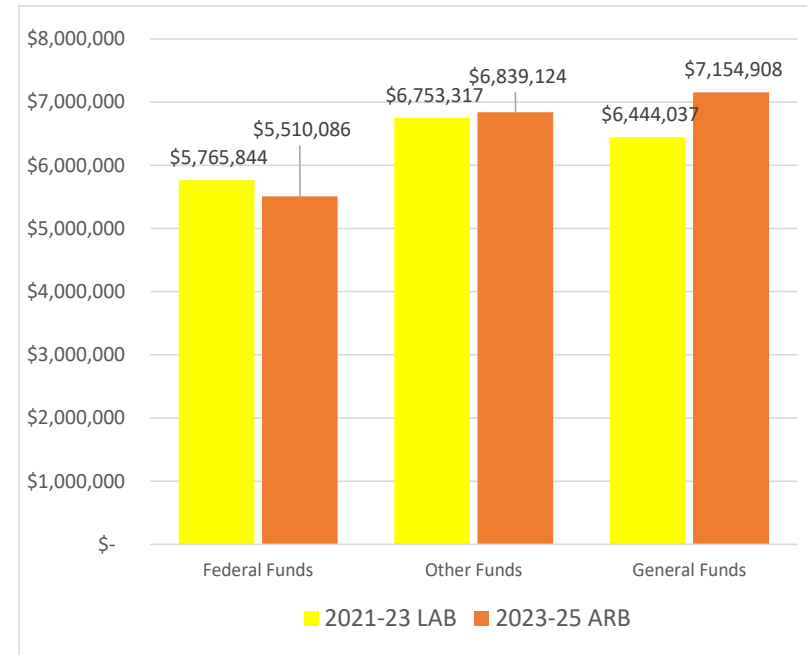
2023-25 Agency Expenditures by Expenditure Type (ARB)

# BUDGET NARRATIVE

## Budget Summary Graphics (continued)



2023-25 Distribution by Fund Type



Comparison of 2021-23 Legislatively Approved Budget with the 2023-25 Agency Requested Budget

# BUDGET NARRATIVE

---

## Mission Statement and Statutory Authority

### *Mission and Vision*

- The Department of Geology and Mineral Industries (DOGAMI) provides earth science information and regulation to make Oregon safe and prosperous.
- Through science and stewardship, DOGAMI is working toward an Oregon where:
  - People and places are prepared for natural hazards
  - Decisions for Oregon's future always consider natural hazards
  - Resource potential is fully understood and responsibly developed
  - Earth science contributes to the health of our coast, rivers, forests and other ecosystems
  - Geologic learning and discovery abound
- The Agency is guided by a five-member Governing Board appointed by the Governor and confirmed by the Senate. The Board sets Agency policy and oversees general operations and adopts a strategic plan every six years to advance DOGAMI's mission and objectives. As active members of their communities, Board members provide an important connection between Oregonians and DOGAMI's work.
- Statutory Authority:
  - ORS 516: Establishes DOGAMI as Oregon's source of geologic resource and hazard science, and outlines the Agency's responsibilities for developing maps, reports, data, and other information to help Oregon manage natural resources and better understand and prepare for natural hazards.
  - ORS 517, 520 and 522: Establish DOGAMI's regulatory authority for overseeing surface mining, oil and gas exploration and production, and

geothermal exploration and production, as well as working to minimize impacts of natural resource extraction and to maximize opportunities for land reclamation.

- Additional Statutes:
  - Mapping landslides (ORS 195)
  - Developing tsunami warning systems and information in cooperation with the Office of Emergency Management (ORS 401)
  - Other Statutes pertaining to the Agency:
    - ORS 184: Land use
    - ORS 197: Role in planning and statewide planning goals
    - ORS 215: Geologic resources relative to agricultural land
    - ORS 273: Specific specialty services to Division of State Lands
    - ORS 274: Consultation and archiving relative to submerged and submersible lands
    - ORS 455: Mapping tsunami inundation along Oregon's coast, seismic safety of school and critical facility buildings, consultation on determining the impact of possible tsunamis on proposed development
    - ORS 536: Agency actions to conform to policy of Water Resources Commission
    - ORS 537: Coordination with Water Resources Department in geothermal matters
    - ORS 401.910: Grant program for seismic rehabilitation of certain facilities
    - ORS 659A.885: Energy Infrastructure Resilience

# BUDGET NARRATIVE

---

## Administrative Rules

OAR Chapter 632



*Oregon Department of Geology and Mineral Industries staff conducting field mapping and research.*

## Agency Strategic Framework

The Agency is currently updating its strategic plan to align with the future needs of Oregonians. The new plan will reflect Oregon's resource potential, and unique geological hazards. The prior 2015-2021 Strategic Framework provided shared goals and objectives to guide the Agency's progress over the past six years. The Strategic

Framework established five focus areas and set a high-level goal and goal-advancing objectives for each area. Short-term initiatives were developed during each biennium to advance specific goals and objectives of the Governor's Long-Term Focus Areas. The Agency's Key Performance Measures align with the framework's five focus areas.



# BUDGET NARRATIVE

---

## Key Performance Measures (KPMs)

### Proposed KPMs

The Agency is proposing the revision of Key Performance Measure, *KPM #4 - Permitted mine sites inspected biennially*. Field inspections are crucial for DOGAMI's regulation of surface mining. Field inspections allow staff to prevent potential violations or offsite impacts through education and building positive working relations with operators. Field inspections are also key to uncovering problems when they do occur, and the first step toward resolving them.

The revised *KPM #4 - Active Mine Sites Inspected Annually* maintains the focus on inspections as a critical regulatory function of the program but revises the KPM to better represent the appropriate population of sites to be visited and realistic frequency of visits under existing staff resources. The revision ensures that the full population of active sites, both permitted and unpermitted, are included in the measure. This revision also expands the types of inspections included in the calculation, to include remotely sensed imagery review. The target for the first year of implementation will be 20%, with all active sites visited within a five-year period.

### Continuing KPMs

The Agency is retaining the remaining five existing KPMs as follows:

The existing *KPM #1 - Hazard and Risk Assessment Completion* measures the percent of population residing in Oregon Urban Growth Boundary Areas that have completed geologic hazard and risk assessments suitable to initiate Department of Land Conservation and Development goal 7 planning for earthquake, landslide, tsunami, coastal erosion, volcanic and flooding hazards.

The existing *KPM #2 - Detailed Geologic Map Completion* measures the percent of Oregon where geologic data in the form of high-resolution maps have been completed to be used for local problem solving.

The existing *KPM #3 - Lidar Data Completion* measures the percent of Oregon with lidar data at USGS quality level 2 or better (density and accuracy).

The existing *KPM #5 - Customer Service* measures the percentage of customers rating their satisfaction with Agency services as "good" or "excellent" for the categories of helpfulness, accuracy, expertise, availability of information, timeliness, and overall service.

The existing *KPM #6 - Governance* measures whether Agency operations meet best practices; performance is assessed by the DOGAMI Governing Board.

# BUDGET NARRATIVE

## Natural Hazards Focus Area

**Long-Term Goal:** Create and compile comprehensive assessments of natural hazards and community vulnerability and promote risk reduction strategies to build resilient communities.

**Objectives:**

- Map, model, and monitor hazards related to earthquakes, landslides, volcanoes, floods and post-wildfire events, the coast, tsunamis, toxic minerals, and climate change.
- Collect information, including lidar data, physical landscape change data, and inventories of the built environment, to assess the vulnerability and risk of communities to natural hazards.
- Promote probabilistic assessments of natural hazards to allow comparison of risks from all hazards, and to inform mitigation decisions.
- Support agencies and local governments in developing regulatory frameworks and tools to mitigate hazards.
- Collect and distribute data to inform response and recovery following natural disasters and preserve disaster data for future scientific study.

**Key Performance Measures:**

KPM #1 – Hazard and Risk Assessment

Completion

KPM #3 – Lidar Data Completion

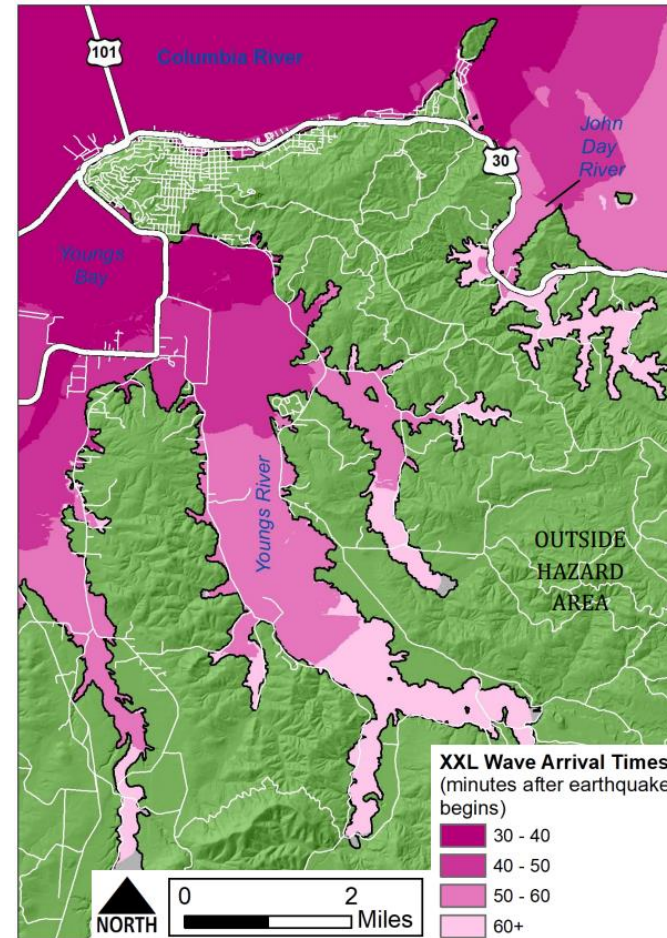
KPM #5 – Customer Service

**Governor’s Long-Term Focus Areas:** Healthy, Safe Communities

**Agency 2023-25 Initiatives:**

- Accelerate development of consistent, complete natural hazard risk assessments that support Oregon’s communities in setting preparedness priorities and identifying mitigation actions. See additional detail in Policy Package 103, 105.

- Collaborate with government and community partners to continue the state’s progress on Cascadia Subduction Zone earthquake preparedness priorities as framed by the Oregon Resilience Plan. See additional detail in Policy Package 108.



*Illustration of tsunami wave arrivals after an XXL Cascadia subduction zone earthquake for the Astoria region (Gabel et al, 2022)*

# BUDGET NARRATIVE

## Earth Science Focus Area

**Long-Term Goal:** Acquire and organize complete and current descriptions of Oregon’s geology, landforms, and geo-processes to assess mineral and aggregate resources, aquifer potential, and natural hazards, to support healthy ecosystems, and to guide safe and prudent rural and urban development.

### Objectives:

- Develop data, maps and models describing Oregon’s geology, tectonics, landscape and processes that shape it.
- Collect information on geothermal, metallic and aggregate mineral resources of Oregon.
- Acquire, organize and distribute high resolution lidar and other remotely sensed imagery for the state.
- Develop and maintain earth science databases to broadly support the mission of the Agency and other professionals working to keep Oregon’s coast, rivers, forests, and other ecosystems healthy.
- Design earth science information products that effectively reach a wide audience.

### Key Performance Measures:

KPM #2 – Detailed Geologic Map Completion

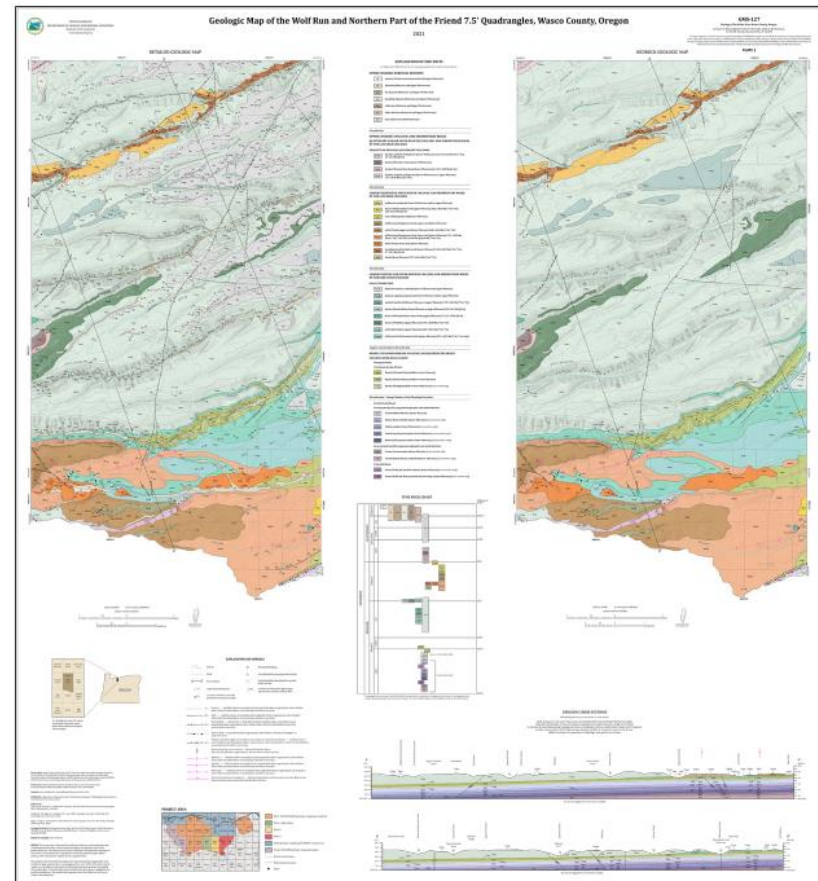
KPM #3 – Lidar Data Completion

KPM #5 – Customer Service

**Governor’s Long-Term Focus Areas:** Healthy, Safe Communities; Responsible Environmental Stewardship; A Thriving Statewide Economy.

### Agency 2023-25 Initiatives:

- Initiate water and critical mineral resource assessments. See additional detail in Policy Package 102.
- Acquire new lidar data for areas prioritized in Oregon. See additional detail in Policy Package 103.
- Complete high resolution geologic maps for local problem solving. See additional detail in Policy Package 105.



*Geologic map of the Wolf Run and northern part of the Friend 7.5' quadrangles, Wasco County, Oregon (McCloughry et al. 2021).*

# BUDGET NARRATIVE

## Resource Management Focus Area

**Long-Term Goal:** Administer effective and balanced regulation of mineral, oil and gas, and geothermal energy development to support the environment, economy, and people of Oregon.

### Objectives:

- Provide the regulatory framework to ensure beneficial reclamation and restoration of disturbed lands.
- Increase understanding of cultural, environmental, and economic effects of mining.
- Ensure mitigation of mining's impacts, including those to water and air quality, habitat, waterways, and slope stability.
- Improve the efficiency of the regulatory programs by using appropriate and emerging technologies.
- Develop practices and procedures to assist mine operators in meeting emerging resource management challenges.
- Continually improve communication and coordination with stakeholders to support resource stewardship.

### Key Performance Measures:

KPM #4 – Percent of Active Mines Sites Inspected Annually (proposed revised in 23-25)

KPM #5 – Customer Service

**Governor's Long-Term Focus Areas:** Responsible Environmental Stewardship; A Thriving Statewide Economy

### Agency 2023-25 Initiatives:

- Support essential program services for the efficient permitting and monitoring of mineral, oil and gas, and geothermal sites.
- Develop and implement a comprehensive online permit

application and tracking system, See additional detail in Policy Package 101.

- Deliver robust consolidated mining permits. See additional detail in Policy Package 104.
- Proactively react to State infrastructure goals. See additional detail in Policy Package 106.
- Protect state resources. See additional detail in Policy Package 107.



*DOGAMI inspection of ongoing mining operations as part of its Mineral Land Regulation and Reclamation program is critical to ensuring compliance and protecting natural resources.*

# BUDGET NARRATIVE

---

## Governance & Operations Focus Area

**Long-Term Goal:** Provide leadership, develop partnerships, and maintain professional standards to optimize operations to achieve the Agency's mission.

**Objectives:**

- Secure sustainable funding sources to provide for continuity of Agency operations and services.
- Continue to assess and improve Agency performance in areas including fiscal management, business continuity planning, communication strategies, and customer satisfaction.
- Seek opportunities for partnerships that leverage our ability to effectively implement programs and expand the use of Agency information.
- Support and facilitate the Governing Board's efforts to promote Agency activities.
- Conduct business and operations safely and efficiently, with guidance from consistent and up-to-date Agency policies.

**Key Performance Measures:**

KPM #5 – Customer Service

KPM #6 – Governance

**Governor's Long-Term Focus Area:** A Thriving Statewide Economy

**Agency 2023-25 Initiatives:**

- Maintain current business operation best practices to support the long-term success of changes already in place.
- Build internal processes that benefit the Agency and track internal metrics.

- Continue to examine the business model of the Geological Survey & Services program to identify services that are most important to Oregon, challenges to providing those services, and options for funding and delivering services long-term. See additional detail in Policy Packages 102, 103, 105, 108.
- Build the Agency's operational efficiency, oversight of operations, and leadership capacity through improvements to the agency's organizational structure and addition of business office staff. See additional detail in Policy Packages 101, 104, 105, 107.
- Position the Agency as a key State Agency in strategic planning for economic opportunities and resource management.
- The Agency will work closely with other State Geological Surveys around the United States to advance national policies that benefit Oregonians.

# BUDGET NARRATIVE

## Outreach & Education Focus Area

**Long-Term Goal:** Provide earth science, resource management, and natural hazards information to support decisions and solutions on individual, local, regional, and statewide levels.

**Objectives:**

- Raise awareness of, support for, and engagement in the Agency’s efforts to achieve a safe and prosperous Oregon.
- Reach wider audiences with Agency information by improving existing or adding new communication channels.
- Promote hazard awareness and preparedness.
- Inspire geologic exploration and discovery.
- Expand the use of Agency information through partnerships, collaboration and coordination, active engagement, and other communication strategies.

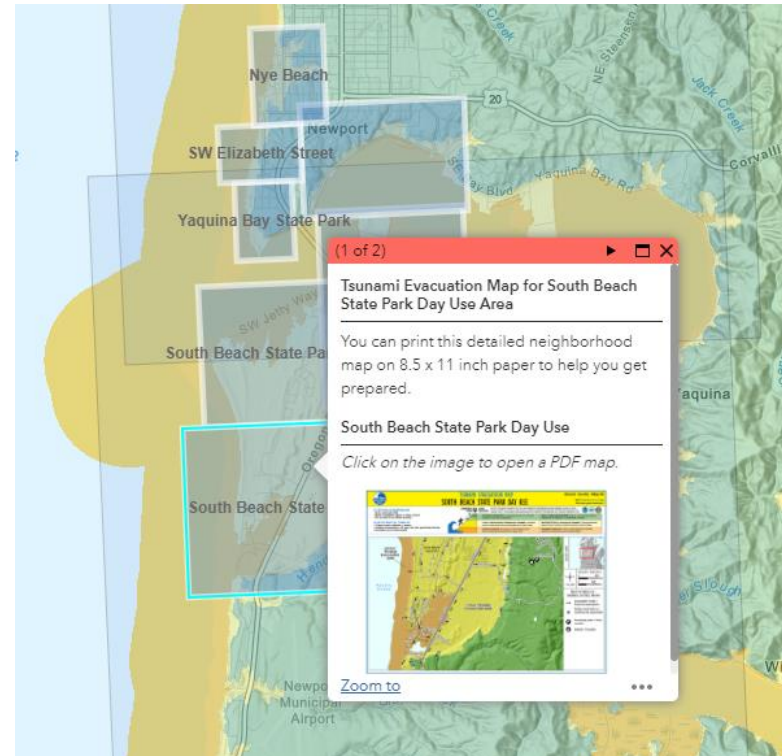
**Key Performance Measures:**

- KPM #1 – Hazard and Risk Assessment Percent Completion
- KPM #2 – Detailed Geologic Map Percent Completion
- KPM #3 – Lidar Data Percent Completion
- KPM #4 – Percent of Active Mines Sites Inspected Annually (proposed revised in 23-25)
- KPM #5 – Customer Service

**Governor’s Long-Term Focus Areas:** Safer, Healthier Communities; A Thriving Oregon Economy

**Agency 2023-25 Initiative:**

- Continue enhancing Agency website to improve accessibility to DOGAMI information.
- Build out accessible social media content through various platforms. Reach and support a broad range of Oregon communities.



Online interactive story maps provide context for DOGAMI’s tsunami evacuation maps and allow viewers to download PDF brochures for their neighborhoods.

# BUDGET NARRATIVE

---

## Criteria for 2023-25 Budget Development

The Agency continues to strengthen the recent progress made within each program area and business operations. The Agency manages over 32 active grants and contracts at any given time within recent biennia.

### *2023-25: Focus on a Resilient Future Looking Program*

The Agency's 2023-25 focus is to continue building a strong operational foundation while maintaining a strong science presence, thereby achieving its mission of providing earth science information and regulation to make Oregon safe and prosperous.

The Agency is positioned to develop resources for the State and help mitigate geohazards, the Agency Request Budget includes the following Policy Option Packages:

- Policy Option Package 101 - ePermitting and IT Modernization
- Policy Option Package 102 - Oregon Mapping Program: Water Resources and Mineral Resource Potential

- Policy Option Package 103 - Oregon Hazard Mapping Program: Post-fire Debris Flow Risk Assessment
- Policy Option Package 104 - Consolidated Mining Permit Lead
- Policy Option Package 105 - Organizational Adjustments
- Policy Option Package 106 - Infrastructure Permit Support Program
- Policy Option Package 107 - Unpermitted Surface Mining Program
- Policy Option Package 108 - Probabilistic Tsunami Hazard Mapping

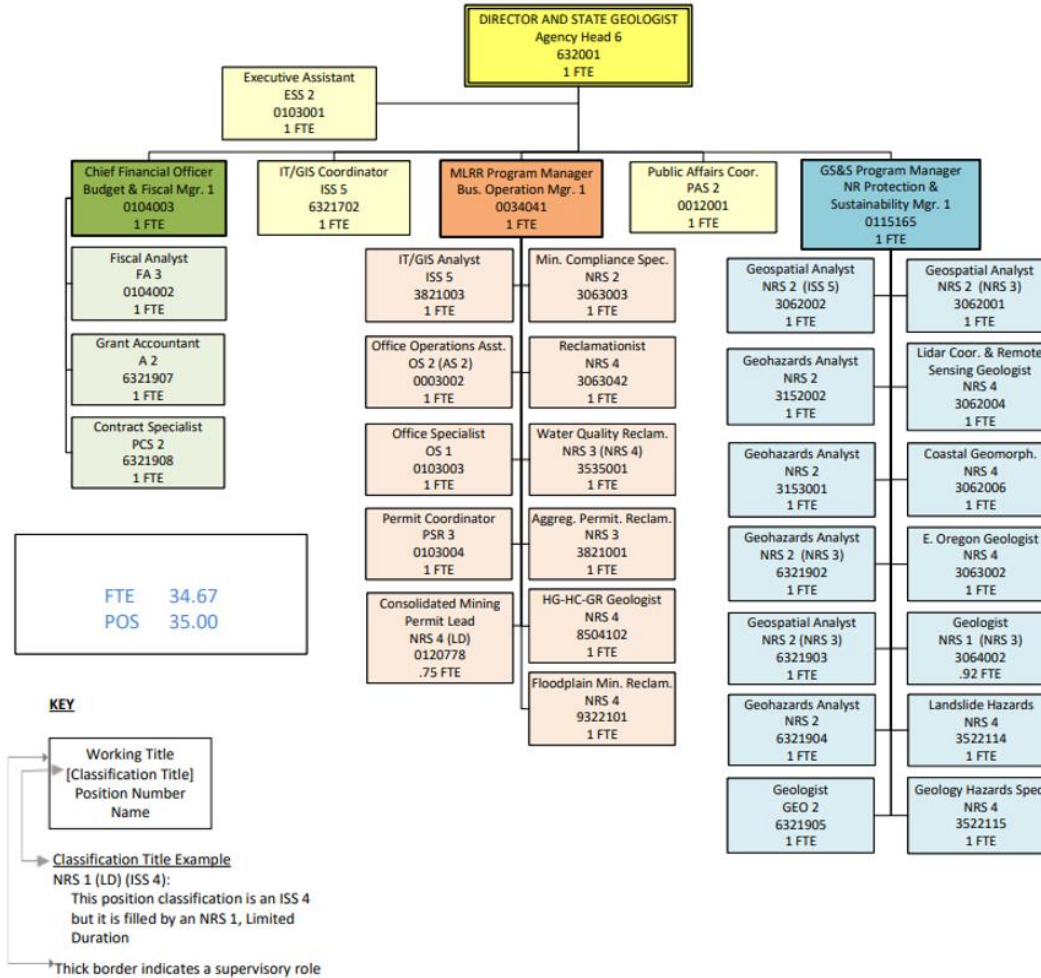
In achieving these priority initiatives, the Agency ensures continued progress for the State and positions the Agency for the challenges that a rapidly changing global dynamic presents.

# BUDGET NARRATIVE

## ORGANIZATION CHARTS

### 2021-2023 Agency Organization Chart: Legislatively Adopted Budget

#### OREGON DEPARTMENT OF GEOLOGY AND MINERAL INDUSTRIES





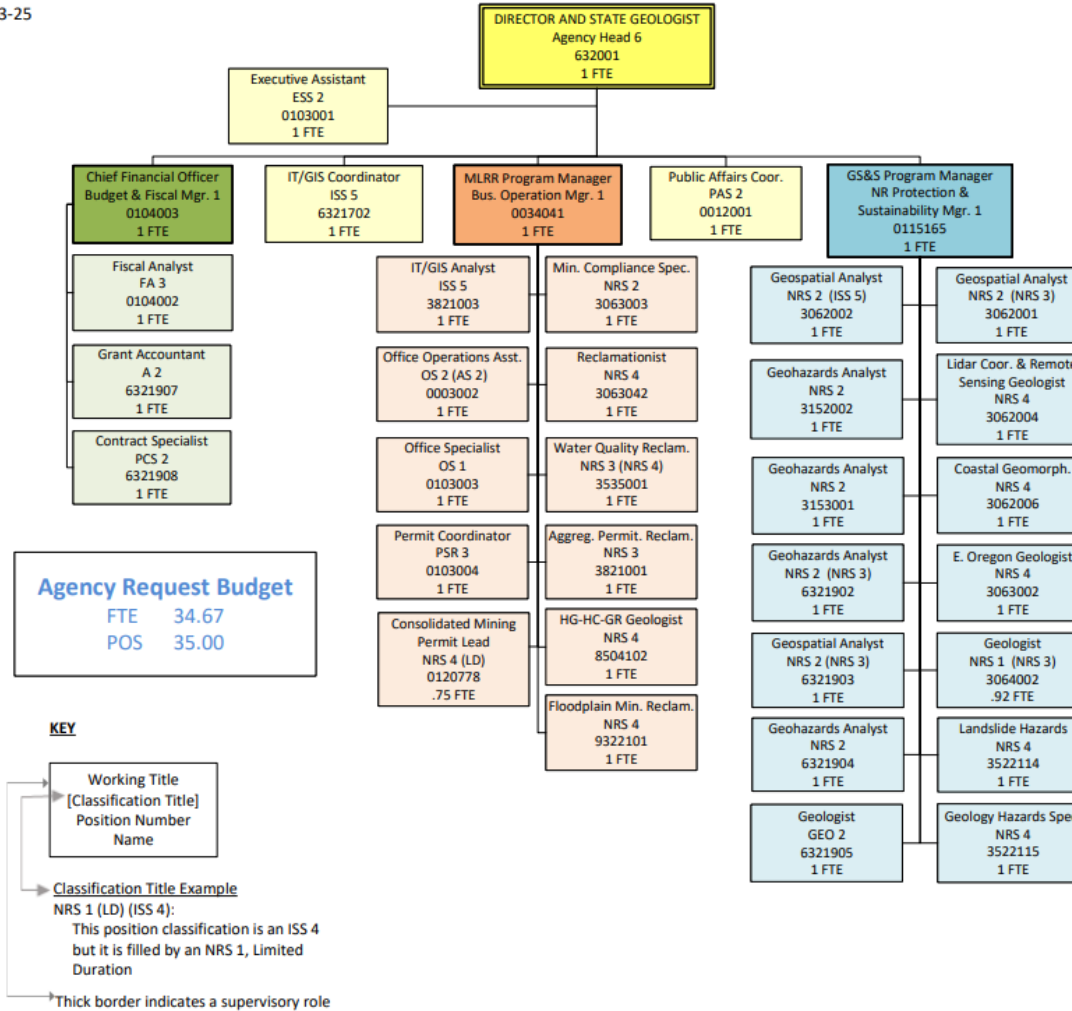
# BUDGET NARRATIVE

## 2023-2025 Agency Organization Chart: Current Service Level Agency Request Budget

### OREGON DEPARTMENT OF GEOLOGY AND MINERAL INDUSTRIES

AY 23-25

July 1, 2022



Agency Request

Governor's Budget

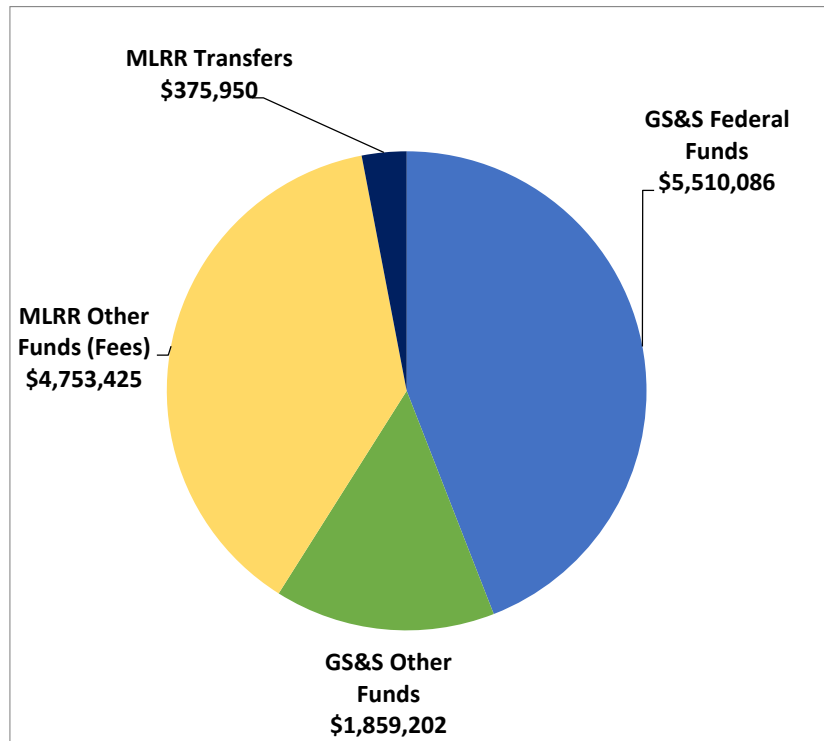
Legislatively Adopted

Budget Page 15

# BUDGET NARRATIVE

## 2023-25 REVENUES

### Revenue Forecast Graphic



### 2023-25 Agency Wide Funds by Source (excluding General Funds and Lottery Funds)

#### Revenue Forecast Narrative

The Agency's revenue is a diverse mix of Federal and Other Funds

Agency Request

Governor's Budget

Legislatively Adopted

Budget Page 16

generated by Geological Survey & Services (GS&S) program partnerships and projects and fees collected by the Mineral Land Regulation & Reclamation (MLRR) program. All revenues are non-discretionary and limited to expenditures directly related to the project or program.

**MLRR Program Revenues:** Other Fund fee revenues support regulation of the specific mineral resource being extracted or developed. Fees are expected to be equitable across regulatory programs where permitting process demand similar staff resources.

- Surface mining fees: Application and renewal fees for exclusion certificates, exploration permits, operating permits and an annual production fee calculated per tons reported.
- Oil and gas fees: Permit application and renewal fees.
- Geothermal fees: Permit application and renewal fees.

The MLRR revenue projection is based on a combination from past biennia fee collections and an enacted fee increase effective January 2021. Fees are paid by mining permittees and include permit applications, annual permit renewals, exclusion certificates and mining production fees per tonnage. Fees paid by both Oil and Gas and Geothermal permittees include new permit applications and annual permit renewals.

**GS&S Program Revenues:** Focus will continue to be on acquiring Federal Fund and Other Fund partners to generate revenue to support much of the Agency's geologic hazard and resource study and mapping. Projections for these projects and other non-General Fund estimates are based on prior biennia grant awards and anticipated changes in projects.

**Key Considerations for Agency Revenue Projections:** The Agency, particularly the GS&S program, relies on funding sources that are highly variable, with availability that is beyond the Agency's control.

# BUDGET NARRATIVE

---

## Key considerations:

- Revenue forecasts for Federal and Other Funds for GS&S project priorities are frequently based on funding sources that are not confirmed yet have historically been available to the Agency.
- Other Oregon agencies receive and direct Federal Funds of high importance to DOGAMI's work, including Federal Emergency Management Agency pre-disaster mitigation funds. DOGAMI partners with other state natural resource agencies to provide services and data essential to help manage these federal programs.

**Basis for 2023-25 Estimates:** Revenue calculations are further guided by these assumptions:

- The Agency will continue to be successful in capturing Federal and Other Funds to support GS&S program work on coastal hazards, earthquake and landslide hazard mapping, flood mapping, and geologic mapping.
- Demand for Agency services and need for Agency information will continue.
- Funding will be secured for projects currently in development stages.
- Ongoing projects advance Oregon's long-term plans, the Agency's Strategic Framework goals and Key Performance measures, and are of statewide importance.

**Matching Funds:** Match requirement for 2023-25 revenue sources:

- GS&S STATEMAP – U.S. Geological Survey (USGS) federal grant has a required 1:1 match requirement. USGS has a significantly expanded Senate appropriation in 2022.

# BUDGET NARRATIVE

## GEOLOGICAL SURVEY & SERVICES PROGRAM

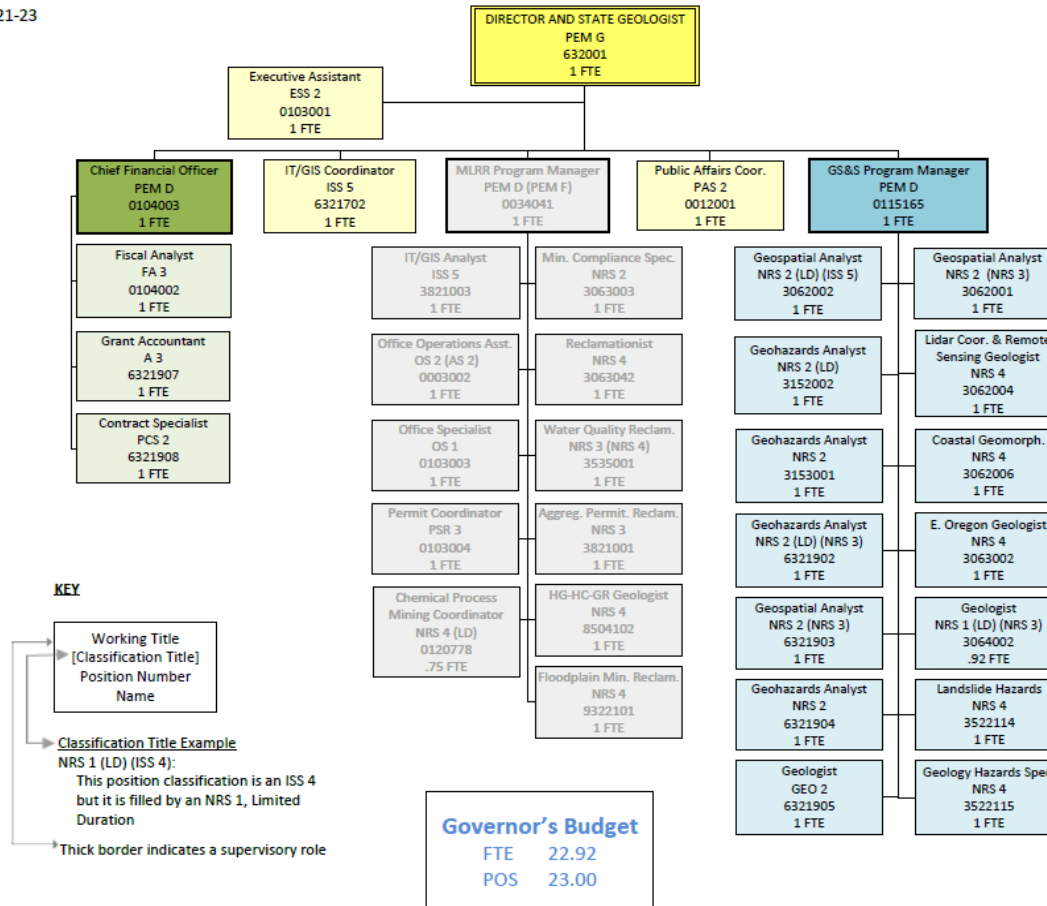
### Organization Charts

#### 2021-2023 Geological Survey & Services Organization Chart: Legislatively Adopted Budget

OREGON DEPARTMENT OF GEOLOGY AND MINERAL INDUSTRIES

AY 21-23

August 2021



Agency Request

Governor's Budget

Legislatively Adopted

Budget Page 18

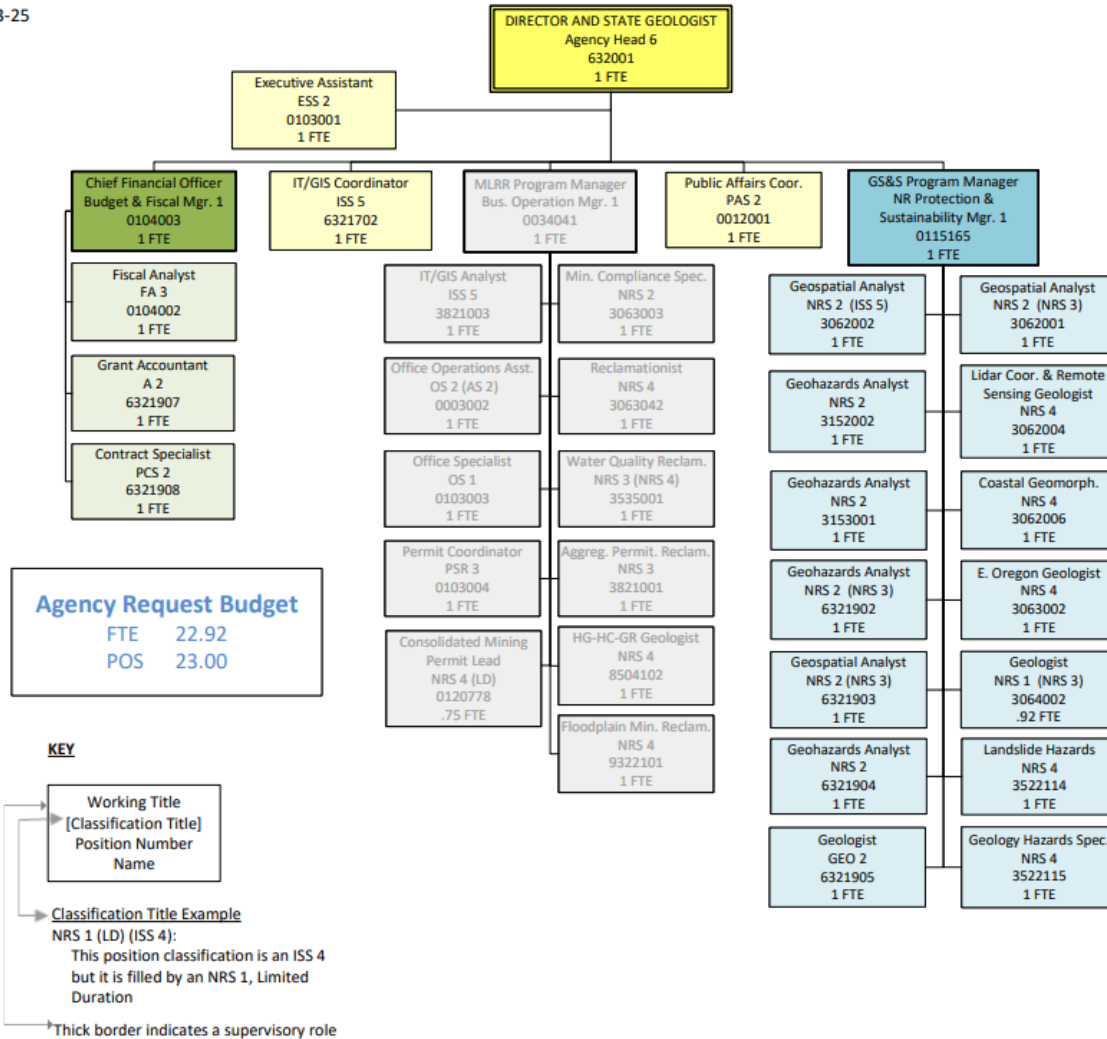
# BUDGET NARRATIVE

## 2023-25 Geological Survey & Services Organization Chart: Current Service Level Agency Request Budget

### OREGON DEPARTMENT OF GEOLOGY AND MINERAL INDUSTRIES

AY 23-25

July 1, 2022



Agency Request

Governor's Budget

Legislatively Adopted

Budget Page 19

# BUDGET NARRATIVE

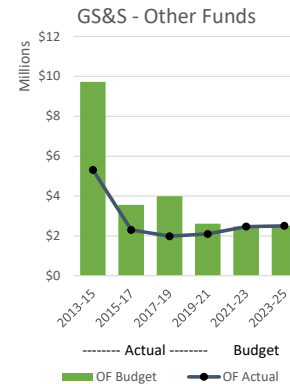
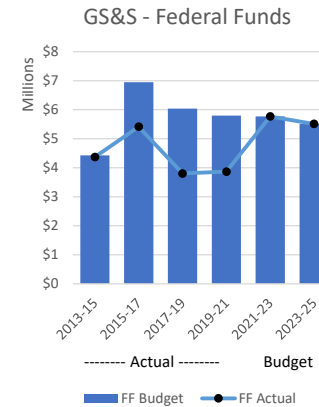
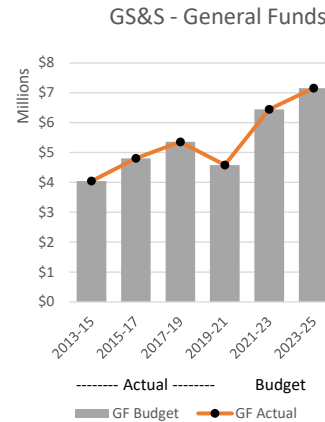
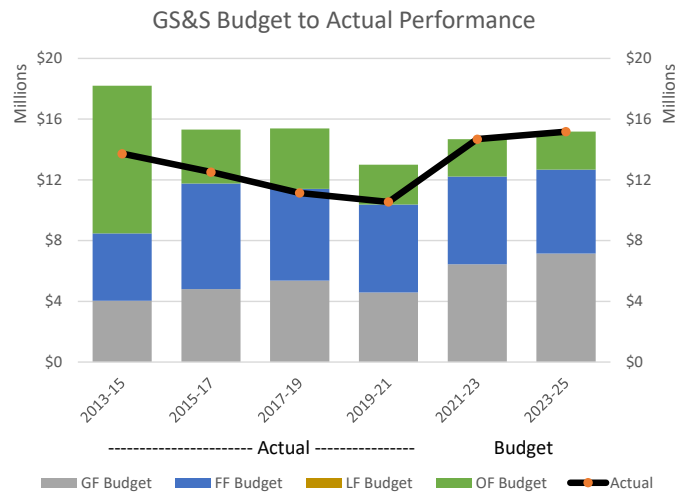
## Geological Survey & Services (GS&S) Program Executive Summary

**Governor's Long-Term Focus Areas:** Responsible Environmental Stewardship; Healthy, Safe Communities; A Thriving Statewide Economy

### Primary Program Contact

Jason McClaughry, Interim GS&S Program Manager, 541-519-3419

### Historic Budget Performance



### Program Funding and Request

The Agency Request Budget (current service level) for 2023-25 supports the GS&S program with \$2,505,003 in Other Funds and \$5,510,086 in Federal Funds expenditure limitation and with \$7,154,908 in General Fund appropriation for a total of 22.92 FTE. These numbers and FTE are before Agency Policy Option Packages.

# BUDGET NARRATIVE

## Geological Survey & Services Program

### Overview

#### Program Overview

The GS&S program develops maps, reports, and data to help Oregon manage natural resources and prepare for natural hazards.

#### Program Description

**Purpose:** The GS&S program develops and distributes practical scientific information that is critical for Oregon’s communities, governments, businesses and public to understand the state’s natural hazards and resources. Making the information easy to find and use, promoting the availability of the information through outreach and education strategies, and publishing all Agency work on the web for free download, helps ensure that information connects with Oregonians – and is used to make informed decisions that increase Oregon’s resilience and prosperity. The program also partners with the USGS to deliver scientific information nationally.

**Services, Clients and Partnerships:** Core program services include:

- Studying hazards such as earthquakes, tsunamis, landslides, floods and coastal erosion, assessing community vulnerability to those hazards, and identifying ways to reduce risk.
- Geologic mapping to support healthy ecosystems, guide rural and urban development and helps to understand resources such as aquifers and mineral distributions.
- Conducting outreach, education and engagement activities to ensure widespread awareness of the Agency’s work and develop tools and materials to help increase usefulness and applicability of information.

- Providing data to the public for use in myriad practical and research applications.



*Field mapping by DOGAMI staff member identifies natural resources and geologic hazards.*

All Oregonians are served by the program’s work. Statewide tools, such as interactive hazard maps and a searchable collection of all published information, provide broad access. The program typically publishes dozens of datasets and other information products every year.

# BUDGET NARRATIVE

---

The GS&S program business model depends on developing funding partnerships with local, state, and federal agencies. Partnering with the communities and organizations served by program information is essential to ensuring that information will be useful to communities and will be put to use. Increasing the resilience of Oregon and the entire Pacific Northwest to earthquakes and other hazards depends on collaborating with the many workgroups, committees, and organizations seeking to increase preparedness for and mitigation of hazards.

Though Oregon benefits from the GS&S program's extensive collaboration, the program's business model relies heavily on outside funding sources. The availability of that funding is outside the Agency's control, which makes revenue forecasting difficult, and creates uncertainty around service delivery capacity. The services the Agency provides with that funding also reflect the priorities of funding partners, which may or may not align with the priorities of Oregon. Initiatives in the 2023-25 budget look to refocus on a systematic approach to meet Oregon's needs for natural hazard and resource information.

**Cost Drivers:** Information produced by the agency needs to provide the people of the State of Oregon with the best possible understanding of natural hazards and resources to be most useful for decision-making. The program's primary cost drivers are the highly specialized staff, state-of-the-art technology tools, and ongoing management of program data to protect the state's investment in developing the data. The return on investment is increased productivity, quality of information, and more usable products.

**Performance Improvement Opportunities:** Improvements to the program's service delivery systems are being pursued in 2023-25 as

progress continues to increase the effectiveness of operations Agency-wide. These include:

- **Continuation of DOGAMI Information Technology improvements.** The GS&S program collects, analyzes, stores and distributes significant amounts of data that's critical to both the work of the Agency and the work of many partners statewide. Continued implementation of the Agency IT plan helps ensure the program has the mission-critical tools it needs to deliver information, and that data is protected and continues to be available as an ongoing service
- **Updates to the Agency's website to increase access to, and improve user experience with, program information.** The Agency has a Publications Center, an online hub for the public to find and download all Agency information and data. In 2023-25 efforts continue to provide free, easy access to information by publishing archived geologic and natural hazard information held by the Agency, as well as updating the website to make finding and interacting with information easier. By making information readily available, the Agency also increases its efficiency and transparency in responding to public record requests and other requests for information.
- **Updates to social media and the Agency media policy.** To reach a wider base of Oregonians the Agency has begun to build out its social media presence. In the 2023-25 Biennium the Agency intends to use this as one outreach tool to increase dissemination of information.



# BUDGET NARRATIVE

---

## Program Justification & Link to Long-Term Focus

### Areas

Oregon's spectacular landscapes come with natural hazards that put people, places, and resources at risk. Understanding those hazards, as well as the state's diverse geology, helps make Oregon a safer and healthier place. The goals of the GS&S program are to:

- Create and compile comprehensive assessments of natural hazards and community vulnerability and promote risk reduction strategies to build resilient communities.
- Acquire and organize complete and current descriptions of Oregon's geology, landforms, and geo-processes to assess resources and natural hazards, to support healthy ecosystems, and to guide safe and prudent rural and urban development.
- Provide earth science, resource management, and natural hazards information to support decisions and solutions on individual, local, regional, and statewide levels.

The GS&S program directly contributes to the Governor's focus areas by providing Oregon with the best available science and practical tools for increasing resilience to natural hazards and managing natural resources. Ensuring that scientific information is easy to use and freely available – for the benefit of the public and for the many local, state, and federal agencies that use DOGAMI information for their work.

The program connects to the *Thriving Oregon Economy* focus area by expanding understanding of the state's mineral resource potential, and associated economic development and employment opportunities, through geologic mapping and studies. Geologic mapping and research also provide groundwater resource information critical for agricultural sector investments and development.

## Program Performance

Program performance has been tracked via Key Performance Measures for hazard and risk assessment completion (KPM #1); detailed geologic map completion (KPM #2) and customer service (KPM #5).

## Enabling Legislation

The program is mandated under ORS Chapter 516–Department of Geology and Mineral Resources.

## Funding Streams

The GS&S program is funded through the General Fund, Federal Funds, and Other Funds. These Federal and Other funds are generated by project contracts and grants from federal, state and local government agencies. General fund also supports the Agency indirect activities. Due to economic affects, the Agency is at risk of variability and dependency of Federal and Other funding that is used to support technical staff. Federal and Other Funds availability may be enhanced with leveraging of General Fund.

## Comparison to 2021-23 Funding

The 2023-25 current service level Agency Request Budget increases the overall Agency's GS&S Program total funding support from 2021-23 budget by \$494,447. By Fund, the change is an increase in General funding, decrease in Federal Funding and a very small increase in Other Funding.

# BUDGET NARRATIVE

---

## Geological Survey & Services Program

### Unit Narrative

- 2023-25 Expenditures: \$15,169,997
  - \$7,154,908 GF
  - \$2,505,003 OF
  - \$5,510,086 FF
  - 23 Positions, 22.62 FTE
- The program is 52.8% funded by Federal Funds and Other Funds, 36.3% and 16.5% respectively.
- Revenue Sources: Federal Funds, Other Funds, and General Funds.
  - Source of Funds: General Fund Allotment, Other Funds (Grants), and Federal Funds (Grants)
    - Federal Funds include:
      - Federal Emergency Management Agency (FEMA)
      - United States Geological Survey (USGS)
      - National Oceanic and Atmospheric Administration (NOAA)
      - Bureau of Land Management (BLM)
  - Required Match: One USGS Grant, 50% GF Match
  - Programs Funded by Revenue Sources: All GS&S programs including mapping and lidar for landslide inventory & susceptibility, flood & channel migration, earthquake and seismic hazards, tsunami & coastal erosion, and geological & mineral resources.
  - General Limits on Use of Funds: Federal Funds and Other Funds can only be used to support contracted work and allowable indirect costs.
  - Basis for 2023-25 estimates: The basis is continuation of our existing grants and the anticipation to submit for new grants of a similar nature to the funding agencies.

- There are no new known proposed laws that affect the program.

# 2023-25 BUDGET NARRATIVE

---

## Policy Option Package 102 – Oregon Mapping Program: Water Resources and Mineral Resource Potential

### Purpose

DOGAMI’s Geological Survey & Services program develops maps, reports, and data to *increase understanding of Oregon’s geologic resources through science and stewardship*. GS&S core program areas include:

- Geologic mapping to understand the conservation and sustainability of water resources, mineral resource potential, and geologic hazards.
- Collection of lidar, which provides accurate high-resolution images of the earth’s surface, for use in new-generation mapping, natural resource management, planning, and many other applications.

This package seeks General Funds to develop and leverage Federal Grants into a multi-year agency aligned mapping and sampling program for water resources and mineral resources in support of the agency mission, goals, and objectives.

### How Achieved

Grant opportunities sought are anticipated to be multi-year funding opportunities. Mapping for mineral resource potential and mapping to address Oregon’s water scarcity issues requires a multi-level, multi-year approach; geologic screening (remote sensing), field sampling and analysis, along with field mapping at appropriate scale. DOGAMI seeks to leverage federal cooperative program grants and create an integrated Oregon Mapping Program. Match-required grant opportunities core to the agency mission are currently foregone. Additionally, pursuit of grant opportunities requires general fund to develop proposals. Grant opportunities sought are based on alignment of agency mission and goals, leverage other projects, program load, administrative burden, match need, and indirect cost recovery.

### Staffing Impact

DOGAMI currently relies on federal fund and other fund grants to maintain operations.  
0.30 FTE (existing). Eastern Oregon Regional Geologist, Natural Resource Specialist 4. Addition of 0.3 FTE GF for this position covers 0.3 FTE previously covered by Federal or Other Funds.  
1.0 FTE (new). Mineral Resource Geologist, permanent Natural Resource Specialist 4 (NRS4)  
2.0 FTE (new). Mapping Geologist, permanent Natural Resource Specialist 2 (NRS2)  
1.0 FTE (new). Geospatial Analyst, permanent Natural Resource Specialist 2 (NRS2)

# 2023-25 BUDGET NARRATIVE

---

## Quantifying Results

Key Performance Measure (KPM) #2 – Detailed Geologic Map Completion, #3 – Lidar Data Completion, #5 - Customer Service.

Given appropriate general fund match, the following is a list of multi-year federal programs that would supply additional federal funds to the agency and support staff and fulfill agency mission. Oregon is currently the only western State not part of Earth Mapping Resource Initiative (Earth MRI) (USGS) and is missing out on available opportunities to gather critical geologic data for mineral resource estimation. If approved, \$952,743 in state match would result in more than \$1,000,000 of additional federal funding to support geologic and hazard mapping, and data preservation.

### U.S. Geological Survey (USGS) Partner Programs

- **USGS National Cooperative Geologic Mapping Program (STATEMAP)** supporting new detailed geologic mapping and building data to support the U.S. GeoFramework Initiative. The program requires a 1:1 State to Federal match. Federal request limit per grant cycle is currently \$800,000 for an individual state geological survey. Supports DOGAMI Key Performance Measure #2 – Detailed Geologic Map Completion.
- **USGS National Cooperative Geologic Mapping Program Earth MRI** initiative a partnership among the USGS, the Association of American State Geologists (AASG) and other federal, state, Tribal and private-sector organizations to modernize the nation’s surface and subsurface mapping. The initiative supports new detailed geologic mapping, mineral resource assessments including critical and strategic minerals, lidar data collection, and geophysical data collection. The program requires a 1:4 State to Federal match. Supports DOGAMI Key Performance Measure #2 – Detailed Geologic Map Completion and Key Performance Measure #3 – Lidar Data Completion.
- **The National Geological and Geophysical Data Preservation Program (NGGDPP)** was created in the Energy Policy Act of 2005 to promote the preservation, archiving, and availability of geologic, geophysical, and engineering data, maps, well logs, and samples for research. DOGAMI has used NGGDPP funds during past projects to preserve, archive, and make readily available to the public geologic, mineral, map, and historic mining data specific to the State of Oregon. The annual program requires a 1:1 State to Federal match. Federal request limit per grant cycle is currently approximately \$200,000 for an individual state geological survey. Supports DOGAMI Key Performance Measure #5 - Customer Service.

## Revenue Sources

General Fund            \$952,743  
Federal/Other Funds   <\$92,743>

Approximate breakdown of State Matching funds by grant program: STATEMAP = \$646,000.00 per biennium; Earth MRI = \$300,000.00 per biennium; NGGDPP = \$200,000.00 per biennium. DOGAMI has participated in STATEMAP since 1992 and produces high quality maps available to the public. DOGAMI has not yet participated in U.S. Geological Survey Earth MRI program. The recent Bipartisan Infrastructure Law enhanced the opportunities for Geological State Surveys by increasing the funds available and widening the funding windows.

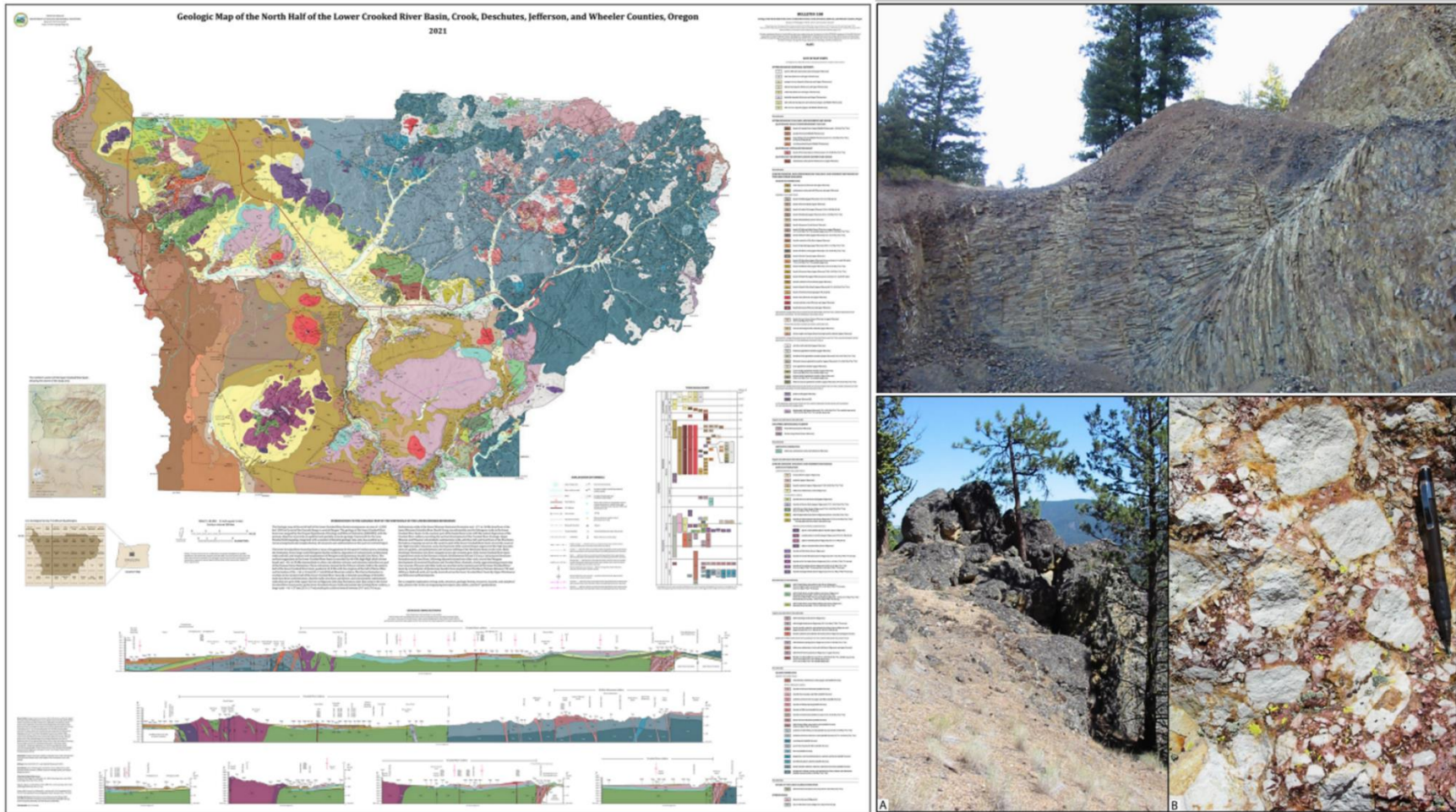
Agency Request

Governor's Budget

Legislatively Adopted

Budget Page 26

# 2023-25 BUDGET NARRATIVE



The included figure below is an example detailed geologic map released in 2021 covering the Prineville area of central Oregon. The primary objective of the map product is to provide a detailed geologic framework to help communities address high-priority water resource issues, aggregate and mineral resources, and geologic hazards. DOGAMI's geologic work in the Prineville area was funded by the U.S. Geological Survey STATEMAP program and funds from the State of Oregon through DOGAMI.

Agency Request

Governor's Budget

Legislatively Adopted

Budget Page 27

# 2023-25 BUDGET NARRATIVE

---

## Policy Option Package 103 – Oregon Hazard Mapping: Post-Fire Debris Flow Risk Assessment

**Purpose**  
Landslides are one of the most devastating natural, and sometimes human-induced, disasters. DOGAMI has worked to understand the susceptibility of many landslide types and this work is part of the agency core function.

Landslides in the form of rapidly moving debris flows are a significant public-safety issue in Oregon, particularly following major forest fires in the form of post-fire debris flows. Annual climate trends toward hotter and dryer conditions in Oregon increase the probability of more frequent and severe wildfires. Along with the hotter and dryer trend comes an increased likelihood of atmospheric river type storms, which result in intense and sustained rainfall that tends to trigger regular and post-fire debris flows. Post-fire debris flows can be devastating, as demonstrated by fatal debris flows that occurred in January 2021, in the area of the 2017 Eagle Creek Fire in the Columbia River Gorge.

After major fires in Eagle Creek in 2017 and Labor Day fires in the Western Cascades in 2020, DOGAMI participated in a federal/state initiative as a member of the Erosion Threat Assessment/Reduction Team (ETARTS) and acted immediately on some of the ETARTS recommendations. Specifically, DOGAMI was awarded a one-time grant of \$668,000 to assess landslide hazards in portions of four recently burned areas of western Oregon through the FEMA Cooperating Technical Partners (CTP) grant program to fund mapping and modeling of post-fire debris flow hazards, risk analysis, and risk reduction activities.

**Geologic Hazard-Related Grants:** The Federal Emergency Mitigation Administration (FEMA) Hazard Mitigation Grant Program (HMGP) provides funding to state, local, tribal and territorial governments so they can develop hazard mitigation plans and rebuild in a way that reduces, or mitigates, future disaster losses in their communities. This grant funding is available after a presidentially declared disaster, such as landslide, tsunami, forest fires, or floods. The program requires a 1:4 State to Federal match. Funding is based on the estimated total or aggregate cost of disaster assistance. GF requested in this POP will provide the State Matching funds needed for future HMGP grant applications. Supports DOGAMI Key Performance Measure #1 – Hazard and Risk Assessment Completion.

DOGAMI proposes a proactive approach to address devastating debris flows. We propose to continue our successful hazard mapping and risk analysis in portions of the state already susceptible to debris flows, but also susceptible to wildfires. Understanding which people, buildings, and infrastructure are in harm’s way is foundational to risk reduction.

# 2023-25 BUDGET NARRATIVE

## How Achieved

To achieve debris flow risk reduction, we proposed the following tasks:

- 1) Prioritize communities in the state with combined debris flow and wildfire susceptibility. This will be done in collaboration with other state agencies. For example, Oregon Department of Forestry (ODF), Oregon Department of Transportation (ODOT), Department of Land Conservation and Development (DLCD), the Oregon Office of Emergency Management (OEM), and community stakeholders.
- 2) Select 2 communities/corridors per year (4 per biennium) to implement the hazard mapping and risk analysis.
- 3) Work with state agencies and communities on risk reduction actions.

We estimate this work will continue for several biennium to be completed.

## Staffing Impact

2.0 FTE (new). Landslide specialist, permanent Natural Resource Specialist 3(NRS3), Geospatial Analyst, permanent Natural Resource Specialist 2 (NRS2). 0.30 FTE (existing). Landslide specialist, Natural Resource Specialist 4 (NRS4). Addition of 0.3 FTE GF for this position covers 0.3 FTE previously covered by Federal or Other Funds.

## Quantifying Results

Key Performance Measure (KPM) #1 – Hazard and Risk Assessment Completion, #3 – Lidar Data Completion, #5 - Customer Service.

## Revenue Sources

General Fund \$520,443; Federal/Other Funds <\$92,743>

January 2021 Fatal Post-Fire Debris Flow. Source of debris flow within the 2017 Eagle Creek Fire, Columbia River Gorge, Oregon (photo courtesy of ODOT)



Agency Request

Governor's Budget

Legislatively Adopted

Budget Page 29

# 2023-25 BUDGET NARRATIVE

---

## Policy Option Package 105 – Organizational Adjustments

### Purpose

Over the last two biennia, the Agency has eliminated a number of positions. However, staff workload has not decreased, and duties are redistributed to others. Therefore, the agency has a need to establish two new positions and make whole a partial position in the Geological Survey and Services Program (GS&S).

- The agency has a need for a Floodplain Mapping Coordinator at a Natural Resource Specialist 4 -level (NRS4). Currently grant development and project management for this program are being led by a NRS 2 position that has been in a work-out-of-class arrangement for over a year due to nature of duties required and being performed. The new NRS 4 position is in alignment with other Geological Survey and Services Programs now being led by NRS 4-level staff and addresses legacy organizational issues.
- An Office Specialist 2 position is requested to meet the current and anticipated workload in the Portland Office of DOGAMI for the 2023-25 biennium. The position is a permanent full-time position. Adequate support staff for routine office work in the form of an Office Specialist 2 will allow higher-level staff to focus on technical work.
- DOGAMI GS&S currently has one NRS1 position listed as 0.92 FTE. The agency requests making this position whole as 1.0 FTE.

### How Achieved

Actual alignment of duties to budget provides transparency of staffing demographics most accurate to agency needs.

### Staffing Impact

- 1.0 FTE (new)., Floodplain Mapping Coordinator, permanent Natural Resource Specialist 4 (NRS4)
- 1.0 FTE (new)., Office Specialist 2, permanent Office Specialist 2 (OS2),
- 0.8 FTE (existing). Geologist, permanent Natural Resource Specialist 1 (NRS3). Addition of 0.08 FTE GF for this position to increase from 0.92 FTE to 1.0 FTE. Position currently covered by 55% Federal Funds, 25 percent Other Funds, and 25% General Funds.

### Quantifying Results

Scientific, general office, and administrative duties will be done at the appropriate staff classification. Increased staff morale and a rebalance in workload for other staff members. Key Performance Measure (KPM) #1 – Hazard and Risk Assessment Completion, #3 – Lidar Data Completion, #5 - Customer Service.

### Revenue Sources

General Fund: \$416,880

Federal /Other Funds: \$83,185

Agency Request

Governor's Budget

Legislatively Adopted

Budget Page 30



# 2023-25 BUDGET NARRATIVE

---

## Policy Option Package 108 – Probabilistic Tsunami Hazard Mapping

### Purpose

The Cascadia subduction zone (CSZ) is prone to large earthquakes (Moment Magnitude (Mw)>8.7) with geologically documented major events every ~480-505 years (19) and smaller (26) more frequent events every ~220-320 years. There is a ~16-22% chance of such an earthquake taking place in the next 50 years and 37-43% chance of a smaller southern Oregon event. FEMA models suggest a CSZ large earthquake in the height of tourist season to be catastrophic. A tsunami loss of life mitigation strategy is to construct tall, well-engineered, buildings so they may be used for vertical evacuation or alternatively construct dedicated vertical evacuations structures.

HB2605 requires developers consult with *“the State Department of Geology and Mineral Industries with respect to the impacts from potential tsunami activity on the proposed building and the department shall provide the developer with the best available scientific evidence of potential impacts. The department shall make a determination as to the likely impacts and recommend any design or other changes to mitigate the impacts that the department deems advisable or necessary.”* HB2605 adopted the American Society of Civil Engineers-7 (ASCE-7) 2,475-yr tsunami design zone for the Oregon coast, formerly imposing tsunami design standards for certain Tsunami Risk Category III and IV buildings and structures built within the tsunami zone.

- An assessment of the tsunami source models used by the ASCE revealed flaws in the modeling approach.
- In some areas of the coast, modeled ASCE 2,475-yr tsunami inundation was found to fall below DOGAMI’s medium tsunami inundation scenario.
- There is a collaborative need (many partners) to update the underlying Cascadia earthquake sources forming basis for probabilistic models.
- Complementary efforts are being proposed in both California and Washington State.
- DOGAMI wish to take an entire coast approach.

**Geologic Hazard-Related Grants:** The National Tsunami Hazard Mitigation Program (NTHMP) operated by the National Weather Service (NWS) of the National Oceanic and Atmospheric Administration (NOAA) provides funding to state governments for tsunami inundation modeling, education and outreach, and the purchase of tsunami wayfinding signage and brochures. This grant funding is available on an annual basis and has funded all past tsunami related activities to date. However, the funding is competitive and would allow for only limited partial support (e.g. community specific modeling) to this proposed effort, effectively reducing our ability to revise the existing 2,475-yr tsunami zone in a timely manner. Supports DOGAMI Key Performance Measure #1 – Hazard and Risk Assessment Completion

### How Achieved

To update existing 2,475-year probabilistic tsunami hazard zones, we propose:

1. Leveraging (\$100K) funding support from the National Tsunami Hazard Mitigation Program (NTHMP), with academic and industry partners DOGAMI will produce revised Cascadia earthquake deformation models that are required to perform the tsunami modeling.

Agency Request

Governor's Budget

Legislatively Adopted

Budget Page 31

# 2023-25 BUDGET NARRATIVE

---

- Phase 1 of the tsunami modeling will focus on the northern Oregon coast in order to complete new 2,475-year tsunami inundation zones for Lincoln, Tillamook and Clatsop counties.

## Staffing Impact

DOGAMI requests \$400K funding support as professional services for tsunami modeling for the 2023-25 biennium.

0.75 FTE (existing). Geospatial Analyst, Natural Resource Specialist 2 (NRS2). Addition of 0.75 FTE to General Fund replacing 0.75 FTE previously covered by Federal or Other Funds.

0.30 FTE (existing). Coastal Geomorphologist, Natural Resource Specialist 4 (NRS4). Addition of 0.3 FTE to General Fund replacing 0.3 FTE previously covered by Federal or Other Funds.

## Quantifying Results

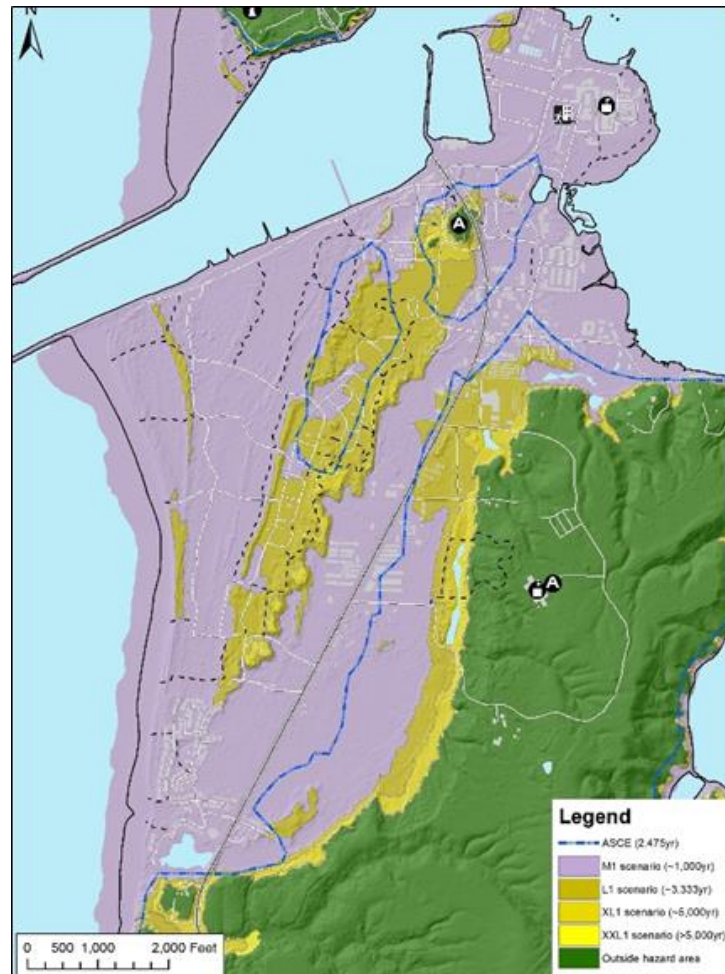
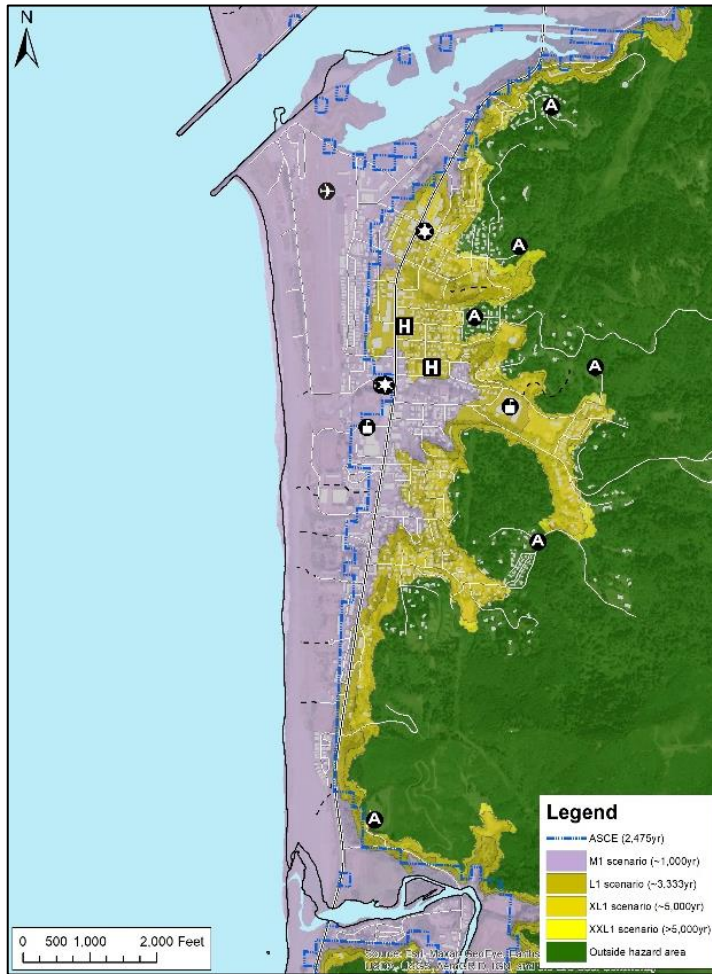
Key Performance Measure (KPM) #1 – Hazard and Risk Assessment Completion, #5 - Customer Service

## Revenue Sources

General Fund \$674,339

Federal / Other Funds <\$274,339>

# 2023-25 BUDGET NARRATIVE



*Tsunami inundation zone maps for Gold Beach (left) and Newport (right) highlighting tsunami design zone issues. The blue dash line is the existing ASCE tsunami design zone. Shaded zones (purple to yellow) are the DOGAMI tsunami inundation zones. Note the coarseness of the ASCE line relative to DOGAMI’s detailed tsunami inundation zones. The ASCE zone is predicting a 2475-year tsunami that is smaller than DOGAMI’s most common scenario, medium, which is estimated to be about 1000-year event.*

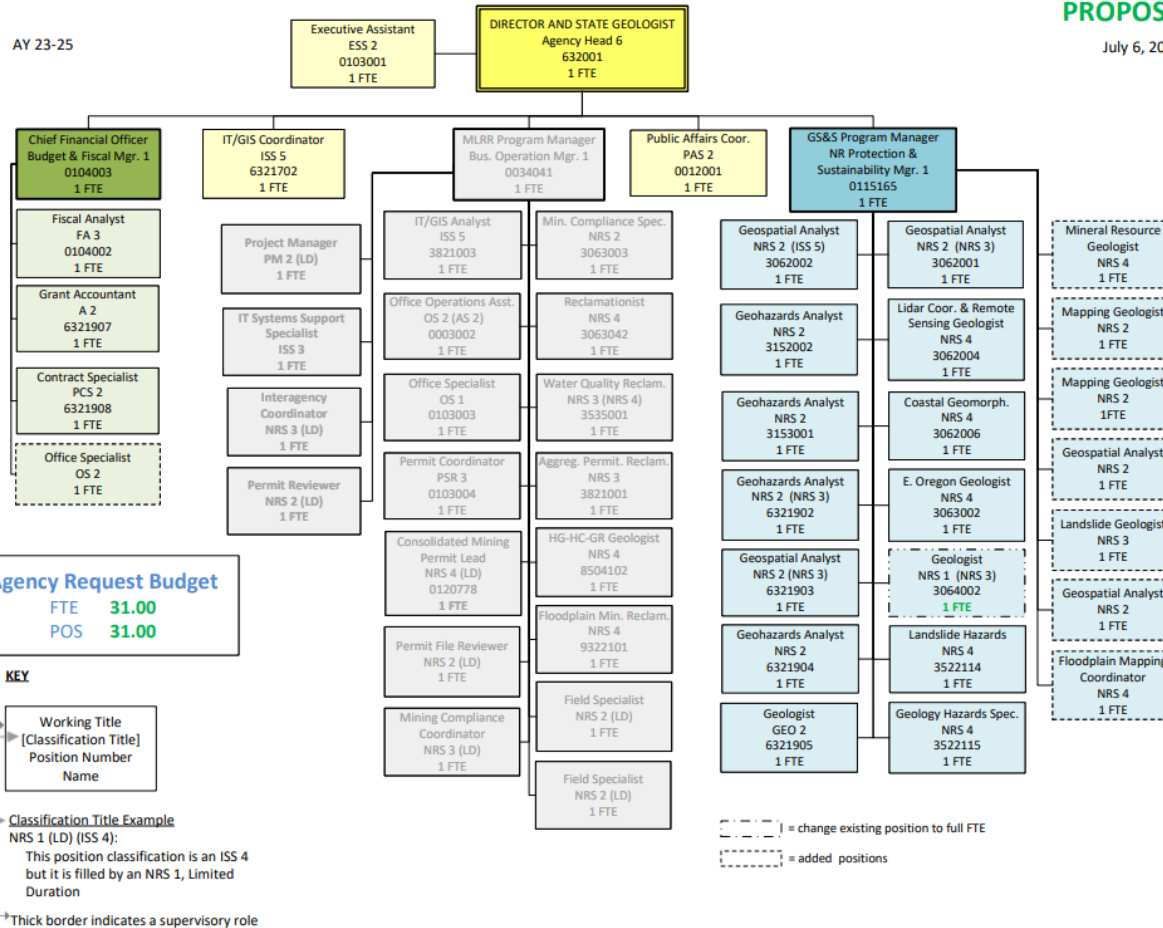
# 2023-25 BUDGET NARRATIVE

## 2023-25 Geological Survey & Services Organization Chart: Current Service Level and Policy Option Packages Agency Request Budget

### OREGON DEPARTMENT OF GEOLOGY AND MINERAL INDUSTRIES

PROPOSED

July 6, 2022



Agency Request

Governor's Budget

Legislatively Adopted

Budget Page 34

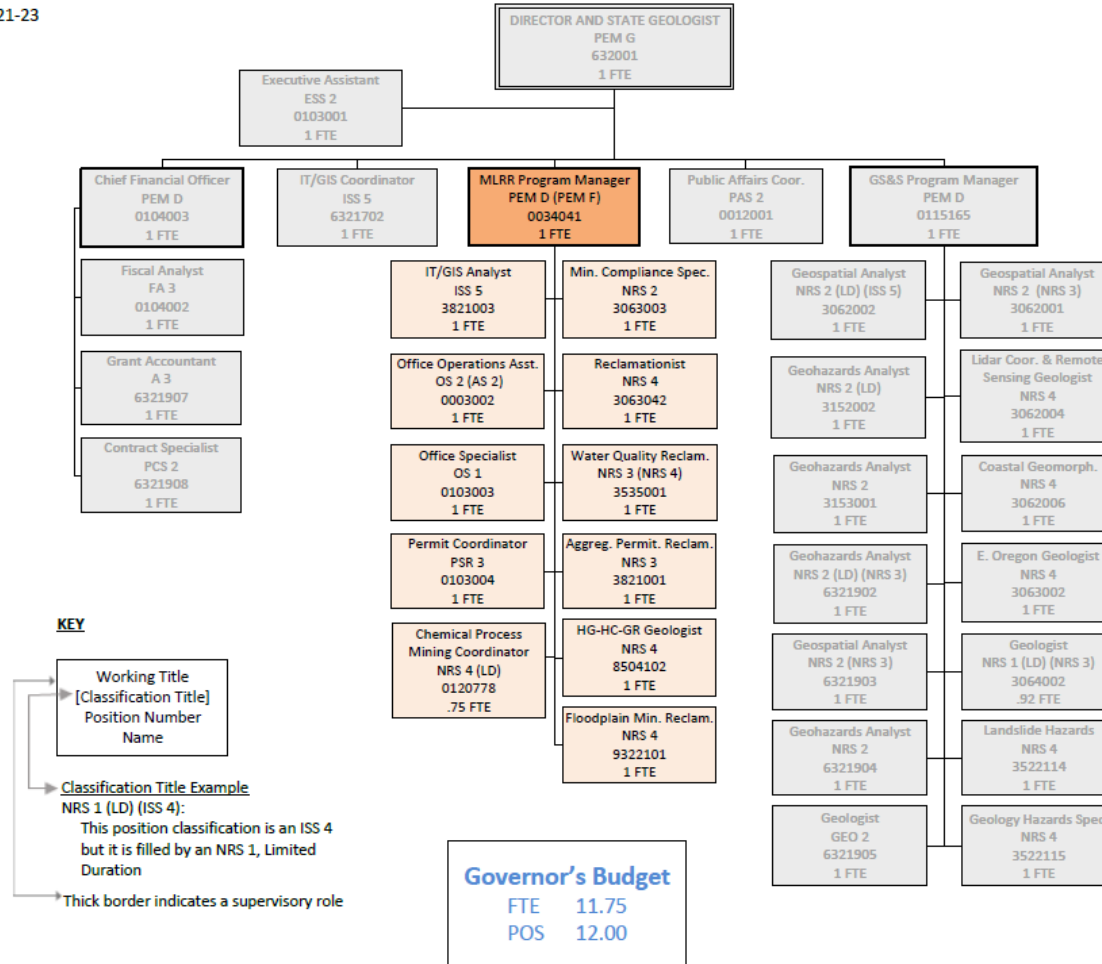
# BUDGET NARRATIVE

## MINERAL LAND REGULATION & RECLAMATION PROGRAM

### Organization Charts

#### 2021-2023 Mineral Land Regulation & Reclamation Organization Chart: Legislatively Adopted Budget

AY 21-23



X Agency Request

\_\_\_ Governor's Budget

\_\_\_ Legislatively Adopted

Budget Page 35

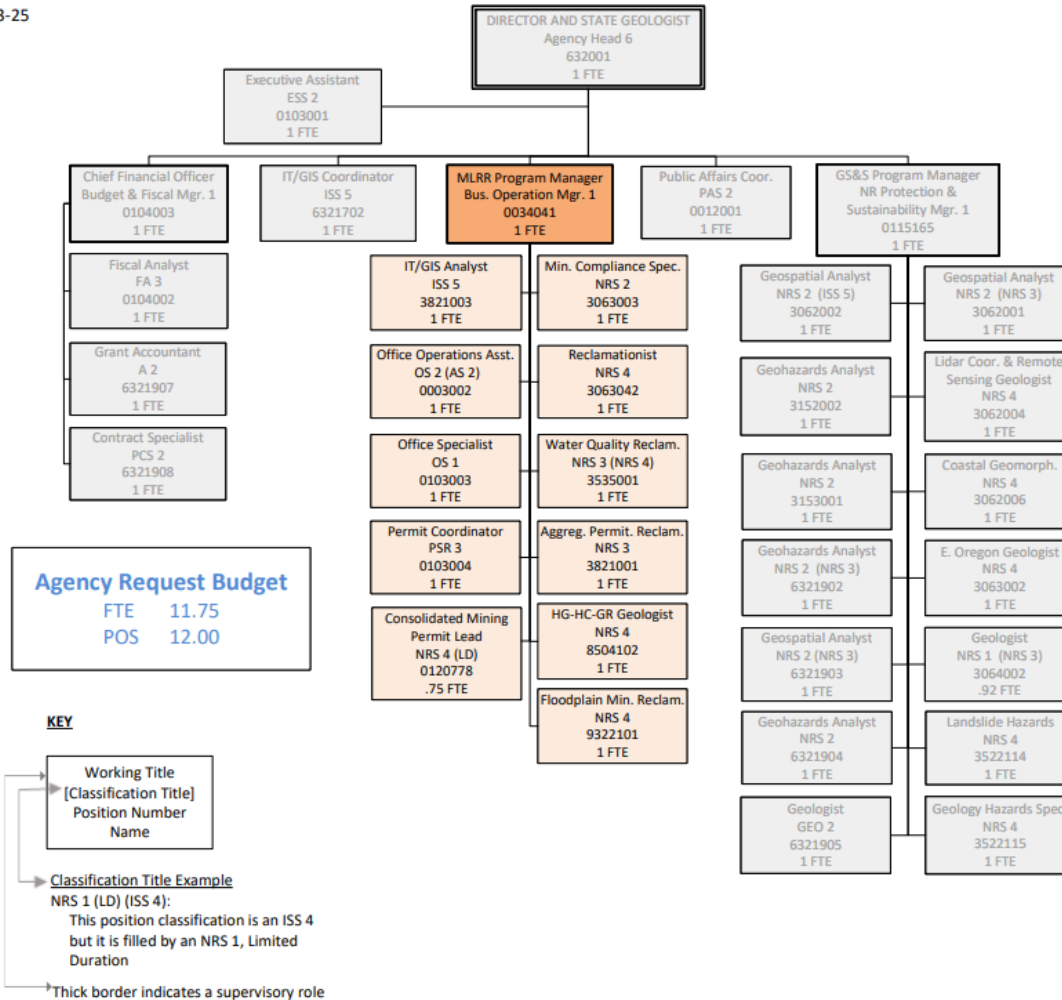
# BUDGET NARRATIVE

## 2023-2025 Mineral Land Regulation & Reclamation Organization Chart: Current Service Level Agency Request Budget

### OREGON DEPARTMENT OF GEOLOGY AND MINERAL INDUSTRIES

AY 23-25

July 1, 2022



X Agency Request

\_\_\_ Governor's Budget

\_\_\_ Legislatively Adopted

Budget Page 36

# BUDGET NARRATIVE

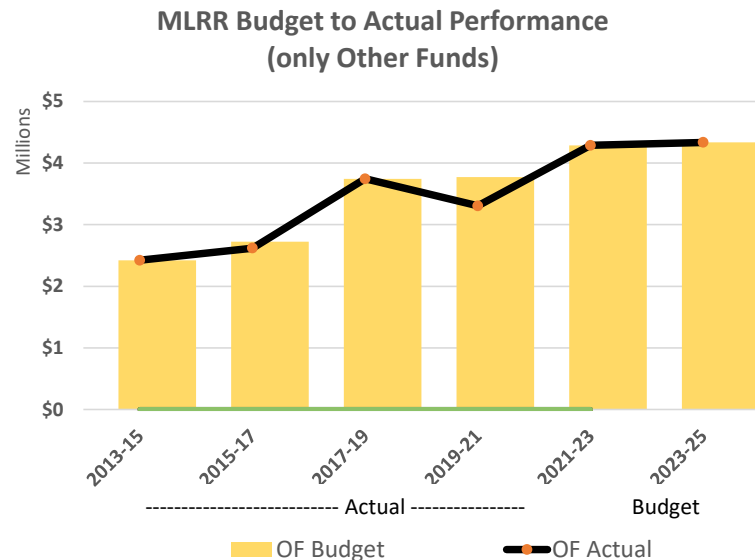
## Mineral Land Regulation & Reclamation (MLRR) Executive Summary

Governor’s Long-Term Focus Areas: Responsible Environmental Stewardship

### Primary Program Contact

Sarah Lewis, MLRR Program Manager, 503-853-5139

### Historical Budget Performance



## Mineral Land Regulation & Reclamation Program Narrative

### Program Funding and Request

The Agency requests, for 2023-25 Agency Request Budget for the MLRR program, a \$4,334,121 in Other Fund expenditure limitation to support 11.75 permanent FTE for the MLRR program.

### Program Overview

The Mineral Land Regulation & Reclamation (MLRR) program oversees the state’s mineral production and works to minimize impacts of mineral resource extraction and to maximize the opportunities for land reclamation.

### Program Description

**Purpose:** The MLRR program permits and monitors extraction of mineral resources statewide, including surface mining, oil and gas wells, and geothermal wells, through Albany-based permitting operations and field-based site inspections. The MLRR program ensures, through enforcement of permit conditions or through direct reclamation action, that mined lands are returned to beneficial uses when mining activity ceases.

**Services, Clients and Partnerships:** MLRR oversight continues throughout the life cycle of a site to final reclamation. The program is 100 percent fee funded. Program services include:

- Site inspections.
- Collaboration with other permitting and advisory agencies.
- Management of developing issues through education and regulation.

# BUDGET NARRATIVE

- And, ultimately, return of mined land to beneficial secondary uses such as agriculture open space, and wetlands.



Stormwater control system at Graves Quarry in Molalla

Among those served by the program are mine operators and industry, local governments and communities, and state and federal agencies. Collaboration with partners is critical to the success of the program and the effectiveness of the regulatory framework, which relies on coordinated review of operating permits and conditioning of permits based on input from natural resource agencies and advisory programs, as well as identification of best practices in cooperation with industry.

**Cost Drivers:** The program's proactive approach to regulation through education helps minimize the potential environmental impacts and

violations before they occur, as well as avoiding costly enforcement actions and suspension of mining activity. The staff time and field expenses needed to support this approach are the program's primary cost drivers. Expenses can dramatically increase when unforeseen issues require additional staff time and site visits. Managing emerging problems can also impact service levels.

**Performance Improvement Opportunities:** Improvements to the program's service delivery systems are currently being evaluated. Development of a modern, paperless permitting and inspection system would result in significant performance improvements: more efficient operations, more effective delivery of service, and higher customer satisfaction.

## Program Justification & Link to the Governor's Long-Term Focus Areas

Long-term goals of Oregon's mineral industries are to provide essential goods and services, from the construction materials needed to build and maintain our communities and roads to energy sources that power our day-to-day lives. The goal of the MLRR program is to administer effective, and balanced regulation of mineral, oil and gas, and geothermal energy development to support the environment, the economy, and the people of Oregon.

The program directly contributes to the Governor's Long-term Focus Area of *Responsible Environmental Stewardship* by ensuring that regulation of Oregon's mining activity is comprehensive, effective, and coordinated among the many agencies and partners who serve as stewards of Oregon's lands and waters. An MLRR permitting process that's efficient, transparent, and fair helps ensure the availability of mineral resources and contributes to the viability of Oregon's mining businesses, which supports the focus areas of *A Thriving Statewide Economy*.



# BUDGET NARRATIVE

---

## Program Performance

Program performance has been tracked via Key Performance Measures for active mine sites inspected annually (KPM #4, proposed revised 23-25) and Customer Service (KPM #5).

## Enabling Legislation

The program is state-mandated under:  
ORS Chapter 517 – Mining and Mining Claims;  
ORS Chapter 520 – Conservation of Oil and Gas; and  
ORS Chapter 522 – Geothermal Resources.

## Funding Streams

The program is 100 percent fee-based Other Funds. Fees are paid by the regulated industry, and any changes to fees require statutory amendment.

## Comparison to 2012-25 Funding

The 2023-25 current service level Agency Request Budget increases the Agency’s MLRR Program total funding authority from 2021-23 by \$46,473.

# BUDGET NARRATIVE

---

## MLRR Program Unit Narrative

- 2023-25 Expenditures: \$4,334,121 OF,
  - 11 Positions, 11.3 FTE
- The program is 100% funded by Other Funds and revenue is dependent on state economic factors.
- An ePermitting initiative is proposed for the next two biennia to improve program efficiency and increase delivery of service.
- Revenue Sources:
  - Source of Funds: Other Funds (Permit Fees)
  - Required Match: N/A
  - Programs Funded by Revenue Sources: All MLRR regulatory programs including Surface Mining (aggregate, non-aggregate, exploration), Oil & Gas, and Geothermal are funded by statutorily determined permit fees. Under an agreement with the Oregon Department of Environmental Quality, MLRR receives a portion of DEQ permit fees and administers select DEQ water quality permits for DOGAMI permitted mine sites. Chemical Process Mining permitting is funded by cost-recovery of expenditures
  - General Limits on Use of Funds: N/A
  - ⊖ Basis for 2023-25 estimates: The budget is based on the fees associated with the projected permit numbers and industry production.

# BUDGET NARRATIVE

## Policy Option Package 101 – ePermitting and IT Modernization

### Purpose

DOGAMI's Mineral Land Regulation & Reclamation (MLRR) Program's permit, inspection, customer, and other business records as well as the processes to handle them, remain in paper form. As a result, core business tasks which should be routine, such as the processing of new permit applications, inspection records, records requests, permit renewals, and payments take much longer than they need to and are burdensome to the program staff, customers, and the public.

### How Achieved

Implementation of a modern, paperless permitting system and online customer interface (ePermitting) will improve Mineral Land Regulation & Reclamation Program service delivery. ePermitting would result in significant performance improvements: more efficient operations, more effective delivery of service, and higher customer satisfaction.

### Staffing Impact

The project includes hiring or contracting with a Project Manager to oversee the project development and implementation and adding an IT Systems Support Specialist to maintain the system.

1.0 FTE (new) Project Manager (PM2), Limited Duration

1.0 FTE (new) an IT Systems Support Specialist 3 (ISS3), permanent

### Quantifying Results

An ePermitting system would result in significant performance improvements, including more efficient operations, that can be tracked by DOGAMI's Key Performance Measure (KPM) # 4 - Percent of active mine sites inspected annually (proposed revised 23-25), more effective delivery of service, and higher customer satisfaction, that can be tracked by KPM #5 - Customer Service.

### Revenue Sources

Project Costs – Year 1-2:	\$2,500,000;	Project costs – Year 3-5:	\$805,200;	Total Project	\$3,305,200
Total General Fund:	AY23-27:	\$2,500,000	(project start mid-2023, will extend into 25-27 biennium)		
Total Other Fund:	AY25-29:	\$805,200 (3 years at \$268, 400 per year system hosting and support)			
General Fund request:	AY23-25 =	\$2,000,000	AY25-27 =	\$500,000	AY27-29 = \$0
Other Fund request:	AY23-25 =	\$0	AY25-27 =	\$536,800	AY27-29 = \$268,400 (year 1 of 2)

Agency Request

Governor's Budget

Legislatively Adopted

Budget Page 41

# BUDGET NARRATIVE

## Policy Option Package 104 – Consolidated Mining Permit Lead

### Purpose

DOGAMI has received the first ever consolidated permit application from Calico Resources USA Corp for a chemical process gold mine in Oregon. In accordance with Oregon regulations, DOGAMI is responsible to coordinate the multi-phase, multi-year application review process with other affected agency cooperators, stakeholders and the public. Oregon’s chemical mining rules apply to this project because cyanide is proposed for processing for the gold; there are far reaching implications associated with this project and the potential to be a high profile and controversial project. In 2020, the legislature approved a 0.75 FTE Limited Duration NRS4 Position to act as Coordinator for the Permit Application. The level of workload for this application has increased beyond 0.75FTE and is currently being filled through the hiring of third-party contractors. Additionally, the agency anticipates additional applications will be submitted under the chemical mining rules.

### How Achieved

DOGAMI requests an increase in FTE to meet the current and anticipated workload. The position is funded through a cost-recovery agreement with the applicant.

### Staffing Impact

The FTE for the limited duration position in 2021-23 will be re-established in 2023-25. This position will increase from 0.75 FTE to 1.0 FTE. If the increase is not received, the project will use third-party contractors, at an increased cost to the applicant.

### Quantifying Results

A full-time position will limit the need for a third-party contractor for project coordination tasks, resulting in reduced costs to the applicant. The agency tracks the program’s ability to provide service with Key Performance Measure (KPM) # 5 – Customer Service.

### Revenue Sources

Other Fund: \$239,308.

# BUDGET NARRATIVE

## Policy Option Package 106 – Infrastructure Permit Support Program

### Purpose

With the implementation of the Bipartisan Infrastructure Bill (Infrastructure Investment and Jobs Act), a once-in-a-generation investment in our nation's infrastructure and competitiveness Oregon, the state and the mining industry anticipate an increased need for aggregate materials in support of construction and infrastructure projects in the next biennium. MLRR technical and administrative staff are already fully allocated to meet the routine permitting functions of the program; recent increases in applications related to strong activity in the construction sector during the pandemic have resulted in the lengthening of permit processing times. The purpose of this package is to provide resources for the MLRR program to be able to provide timely permit application processing in support of federally funded infrastructure projects.

### How Achieved

This package provides MLRR with two limited duration permitting staff to ensure timely application processing. These positions would provide interagency coordination, permit application review and outreach to applicants.

### Staffing Impact

2.0 FTE (new). Interagency Coordinator, limited duration Natural Resource Specialist 3 (NRS3), and Permit Reviewer, limited duration Natural Resource Specialist 2 (NRS2).

### Quantifying Results

The success of this package would be evaluated by a decrease in average permit processing times. This would also be measured through DOGAMI's Key Performance Measure (KPM) # 4 - Percent of active mine sites inspected annually (proposed revised 23-25),, and through more effective delivery of service, and higher customer satisfaction, as tracked by KPM #5 - Customer Service

### Revenue Sources

General Fund: \$422,700

# BUDGET NARRATIVE

## Policy Option Package 107 – Unpermitted Surface Mining Program

### Purpose

Efforts to bring unpermitted and incorrectly permitted surface mining operations into compliance with state regulations need to be adequately resourced to address compliance issues and level the playing field for all permit holders who maintain permits in compliance with state statutes. Sufficient funding is needed to be a healthy regulatory program that can fulfill its responsibilities. Under current funding, compliance is limited to the most egregious transgressions only.

### How Achieved

DOGAMI requests the addition of 4 Natural Resource Specialist Series (NRS 2, 3) field personnel and compliance case officers to investigate complaints, perform routine site inspections, communicate with permittees, track enforcement actions and coordinate submissions and follow-up. This would free up existing, experienced staff (NRS 3, 4) for the technical decision making and individual permit conditioning.

### Staffing Impact

4.0 FTE (new). 1 Mining Compliance Coordinator, limited duration Natural Resource Specialist 2 (NRS3), 2 Field Specialists, limited duration Natural Resource Specialist 2 (NRS2), and 1 NRS2 File reviewer, limited duration Natural Resource Specialist 2 (NRS2).

These limited duration positions would be reduced as the population of unpermitted sites of concern is reduced.

### Quantifying Results

The success of this package would be evaluated by a decrease in average permit processing times. This would also be measured through DOGAMI's Key Performance Measure (KPM) # 4 - Percent of active mine sites inspected annually (proposed revised 23-25), and through more effective delivery of service, and higher customer satisfaction, as tracked by KPM #5 - Customer Service

### Revenue Sources

General Fund \$823,300

# BUDGET NARRATIVE

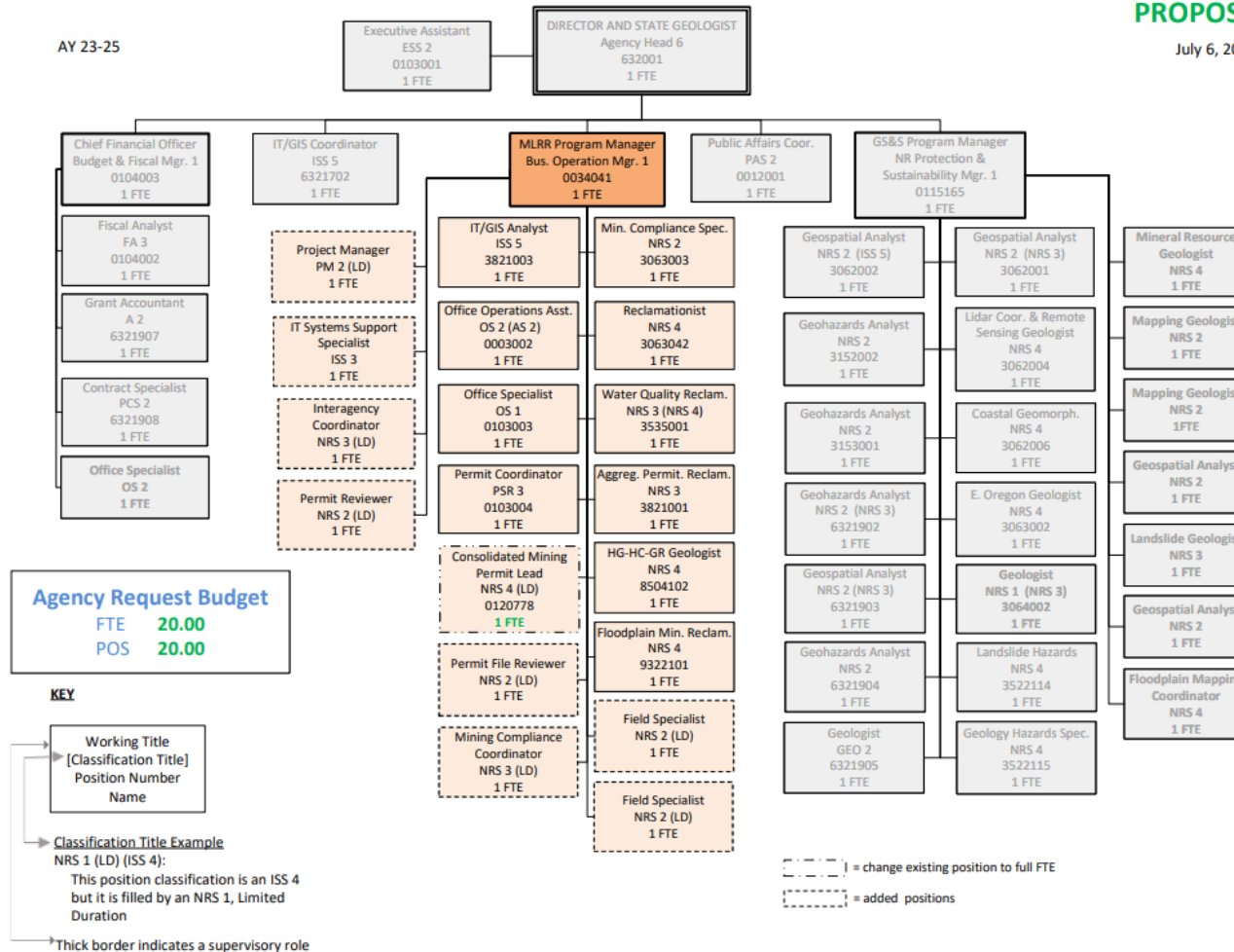
## 2023-2025 Mineral Land Regulation & Reclamation Organization Chart: Current Service Level and Policy Option Package Agency Request Budget

### OREGON DEPARTMENT OF GEOLOGY AND MINERAL INDUSTRIES

**PROPOSED**

July 6, 2022

AY 23-25



Agency Request

Governor's Budget

Legislatively Adopted

Budget Page 45

# BUDGET NARRATIVE

## 2023-2025 Oregon Department of Geology and Mineral Industries Organization Chart: Current Service Level and Policy Option Package Agency Request Budget

### OREGON DEPARTMENT OF GEOLOGY AND MINERAL INDUSTRIES

**PROPOSED**

July 6, 2022

AY 23-25

