

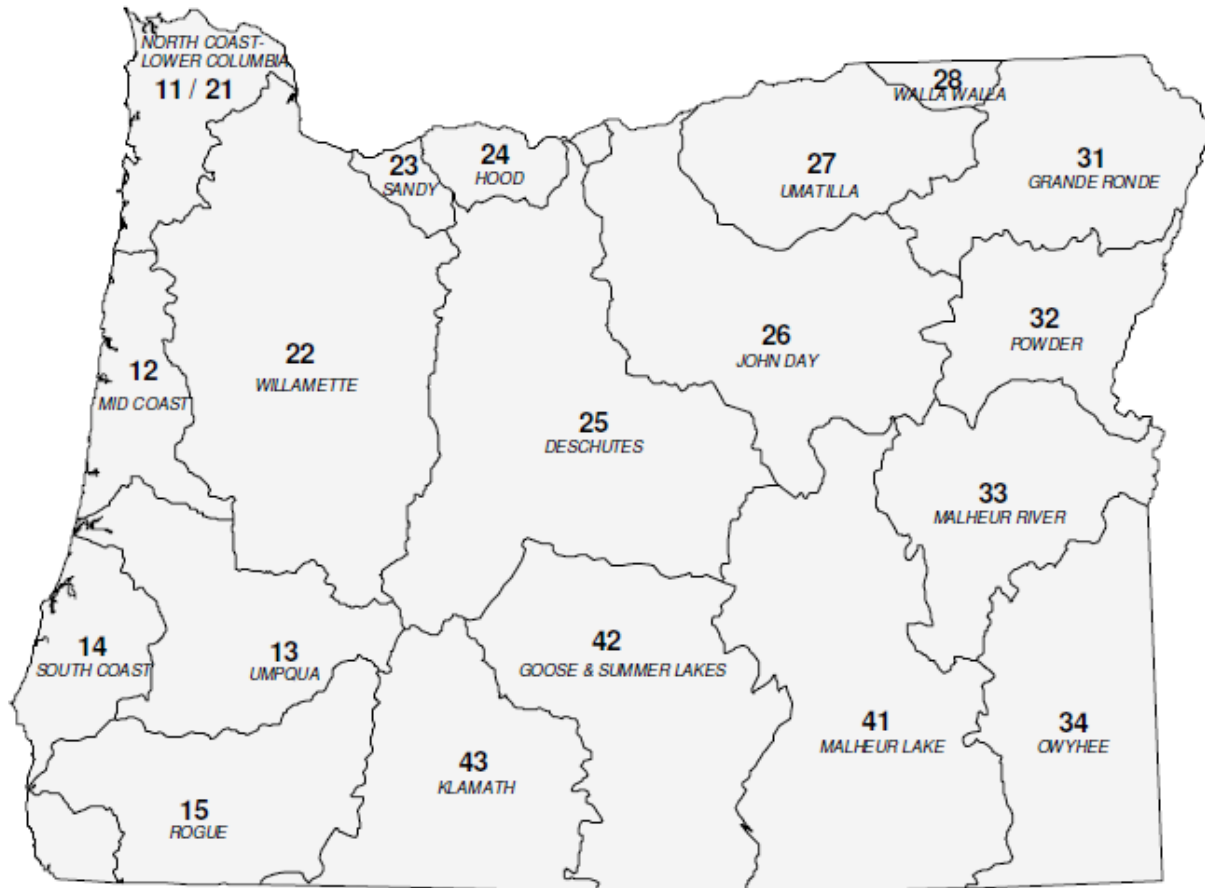


State of Oregon Department of Environmental Quality

**OAR 340-041-0151**

**Tables and Figures**

# Figure 1: Oregon Basin Index Map



Basin Name	Basin #	OAR #
DESCHUTES	25	340-041-0130
GOOSE & SUMMER LKS	42	340-041-0140
GRANDE RONDE	31	340-041-0151
HOOD	24	340-041-0160
JOHN DAY	26	340-041-0170
KLAMATH	43	340-041-0180
MALHEUR LAKE	41	340-041-0190
MALHEUR RIVER	33	340-041-0201
MD COAST	12	340-041-0220
NORTH COAST-LWR COL	11-21	340-041-0230
OWYHEE	34	340-041-0250
POWDER	32	340-041-0260
ROGUE	15	340-041-0271
SANDY	23	340-041-0286
SOUTH COAST	14	340-041-0300
UMATILLA	27	340-041-0310
UMPQUA	13	340-041-0320
WALLA WALLA	28	340-041-0330
WILLAMETTE	22	340-041-0340



**OAR 340-041-0151  
Table 151A  
Designated Beneficial Uses  
Grand Ronde Basin**

Beneficial Uses	Main Stem Grand Ronde River (RM 39 to 165)	All Other Basin Waters
Public Domestic Water Supply <sup>1</sup>	X	X
Private Domestic Water Supply <sup>1</sup>	X	X
Industrial Water Supply	X	X
Irrigation	X	X
Livestock Watering	X	X
Fish & Aquatic Life <sup>2</sup>	X	X
Wildlife & Hunting	X	X
Fishing	X	X
Boating	X	X
Water Contact Recreation	X	X
Aesthetic Quality	X	X
Hydro Power	X	X
Commercial Navigation & Transportation		

<sup>1</sup> With adequate pretreatment (filtration and disinfection) and natural quality to meet drinking water standards.

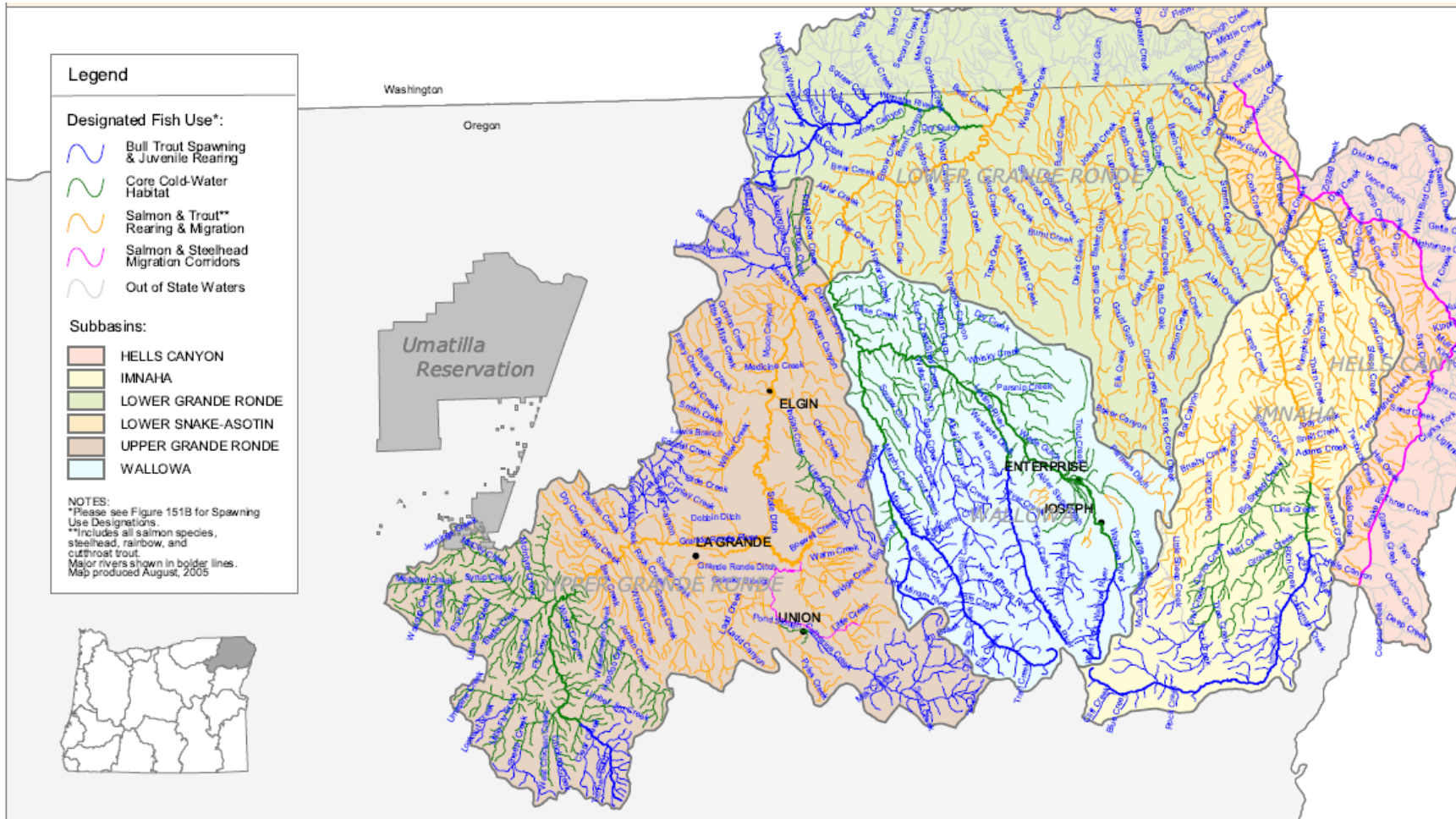
<sup>2</sup> See also Figures 151A and 151B for fish use designations for this basin.



State of Oregon Department of Environmental Quality

# OAR 340-041-0151

## Figure 151A: Fish Use Designations\* Grande Ronde Basin, Oregon





State of Oregon Department of Environmental Quality

# OAR 340-041-0151

## Figure 151B: Salmon and Steelhead Use Designations\* Grande Ronde Basin, Oregon

