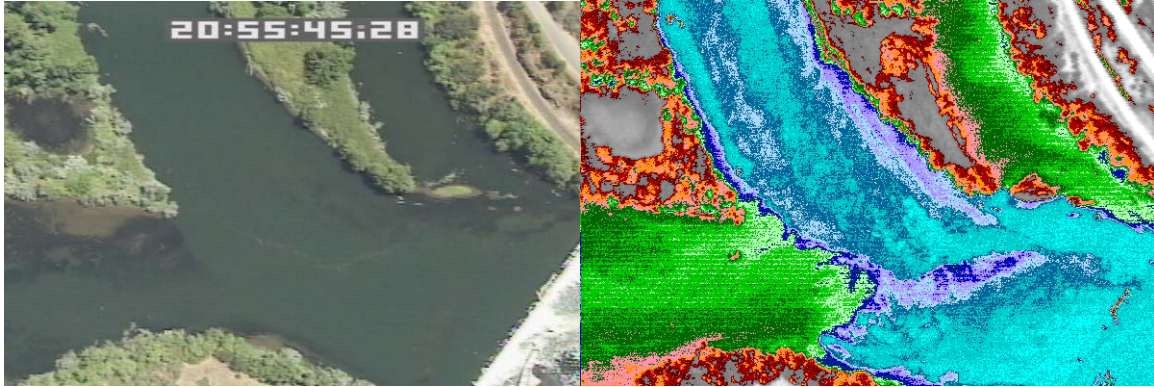
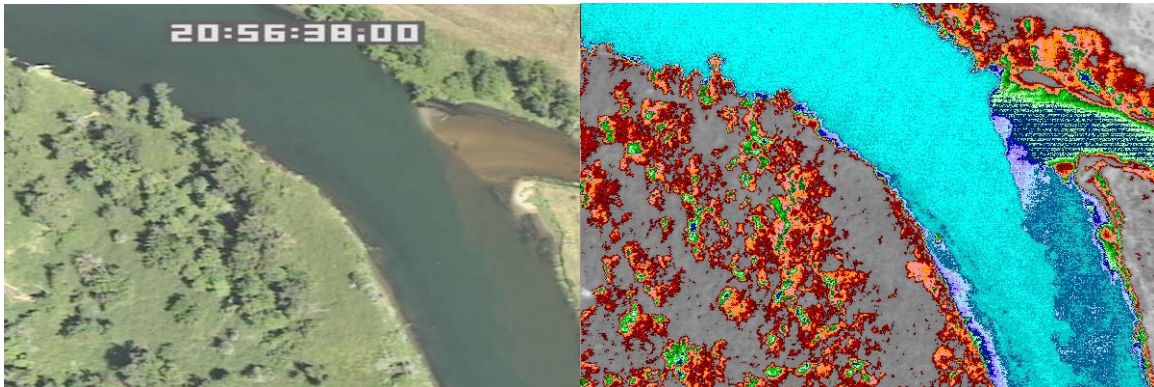


Appendix A – Selected Images

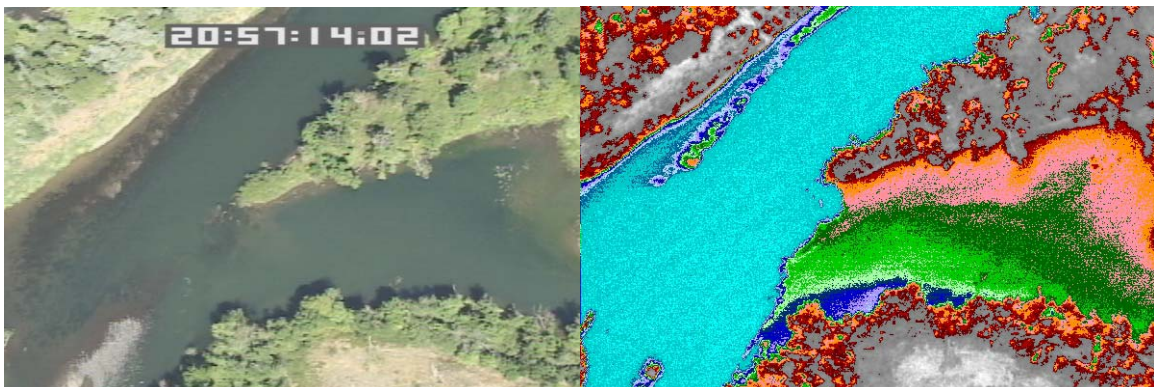
Rogue River



Frame: lb0015 – The confluence of the Rogue River (17.9°C) and two unnamed tributaries at river mile 125.6.



Frame: lb0041 – The confluence of Bear Creek (22.9°C) and the Rogue River (17.3°C) at river mile 126.6. The Rogue River flows from the top to bottom of the image and Bear Creek flows in from the left side of the image.



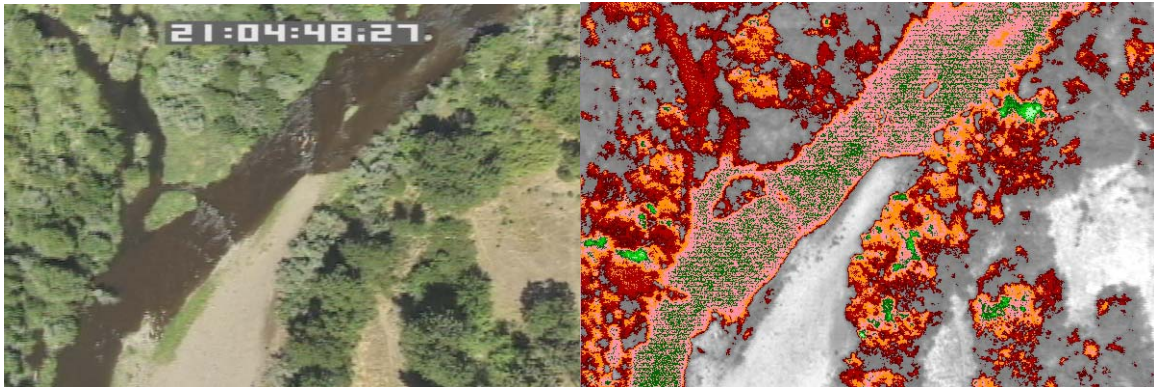
Frame: lb0059 - An un-named tributary at river mile 127.1 contributes warmer water (24.3°C) to the Rogue River (17°C). The tributary flows in from the left side of the image.



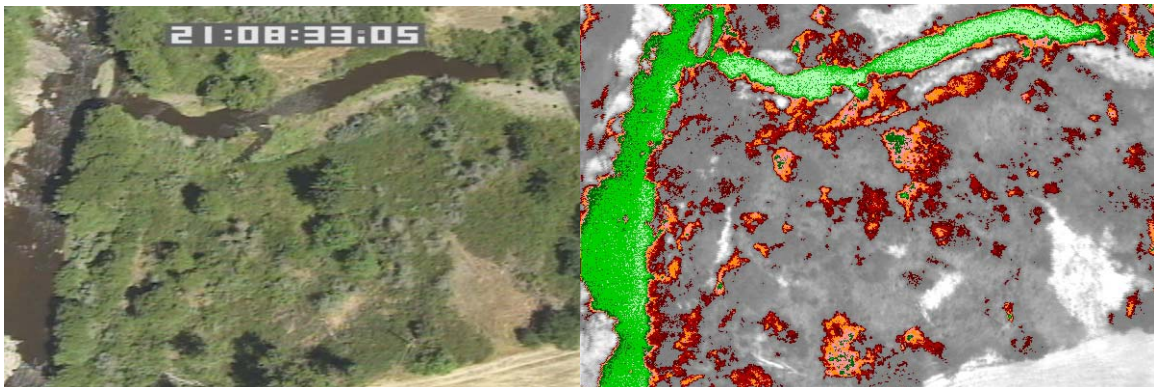


Frame: lb0183 – The Rogue River combines with two side channels at river mile 131.1. The one on the left bank is 18.7°C, and the right bank channel is 26.3°C, compared to the Rogue’s temperature of 17.3°C.

Little Butte



Frame: lb0261 – A warm, unnamed inflow (28.5°C) enters Little Butte Creek (25.9°C) at river mile 0.5. Little Butte Creek flows diagonally from the top right side of the image. The surface inflow enters from the top left of the image.

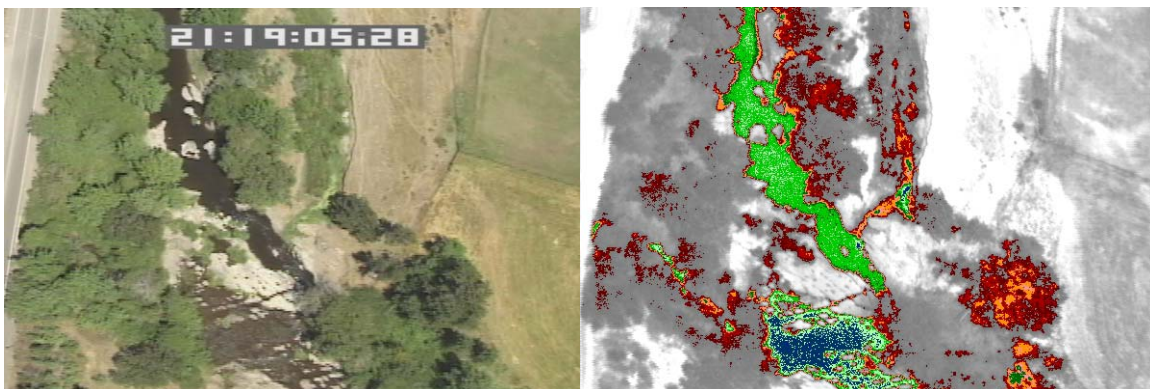


Frame: lb0373: Confluence of Little Butte Creek (24.4°C) and Antelope Creek (23.8°C) at river mile 2.8. Little Butte Creek flows from the top to bottom of the image.



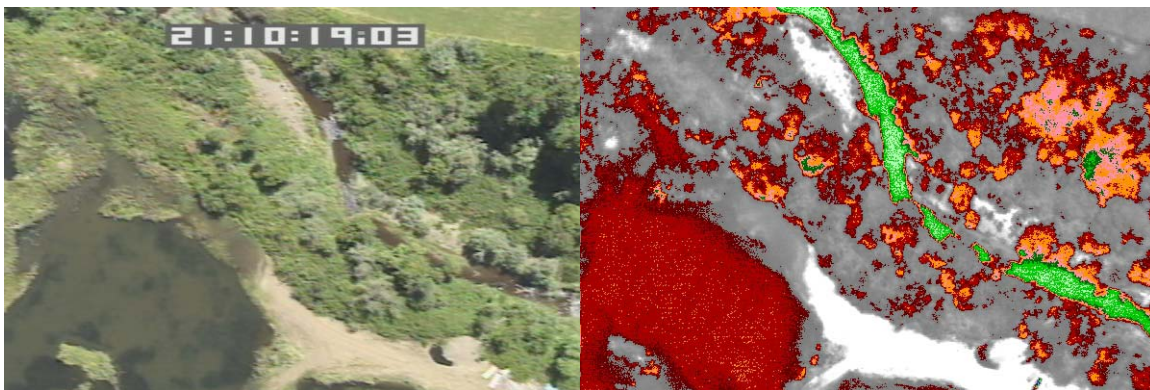


Frame: lb0582: Confluence of the Little Butte Creek (25.8°C) and canal return (24.4°C) at river mile 5.1 in the town of Eagle Point. The canal has a cooling influence on the stream, although both have temperatures over 24°C.



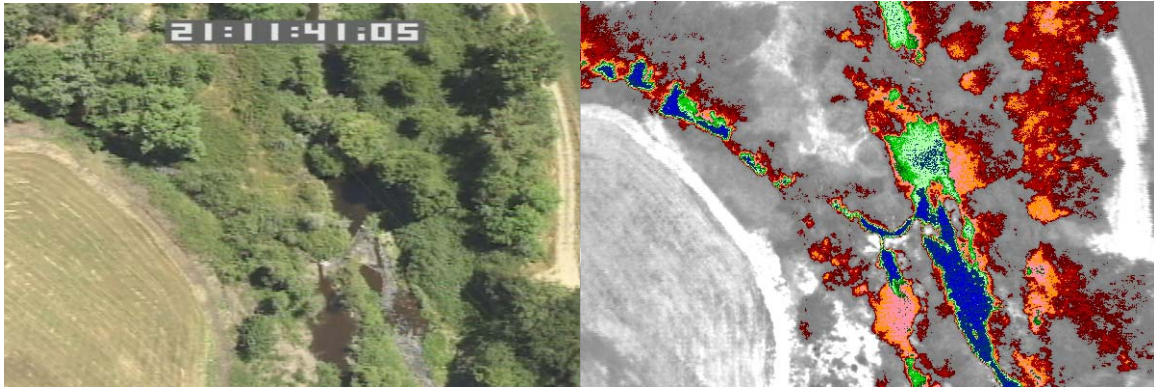
Frame: lb0628: The confluence of Little Butte Creek (23.8°C) and Nichols Creek at river mile 6.2. Nichols Creek is mostly masked by the riparian vegetation and could not be sampled. However, the TIR image shows a locally cool area at this location.

Antelope Creek



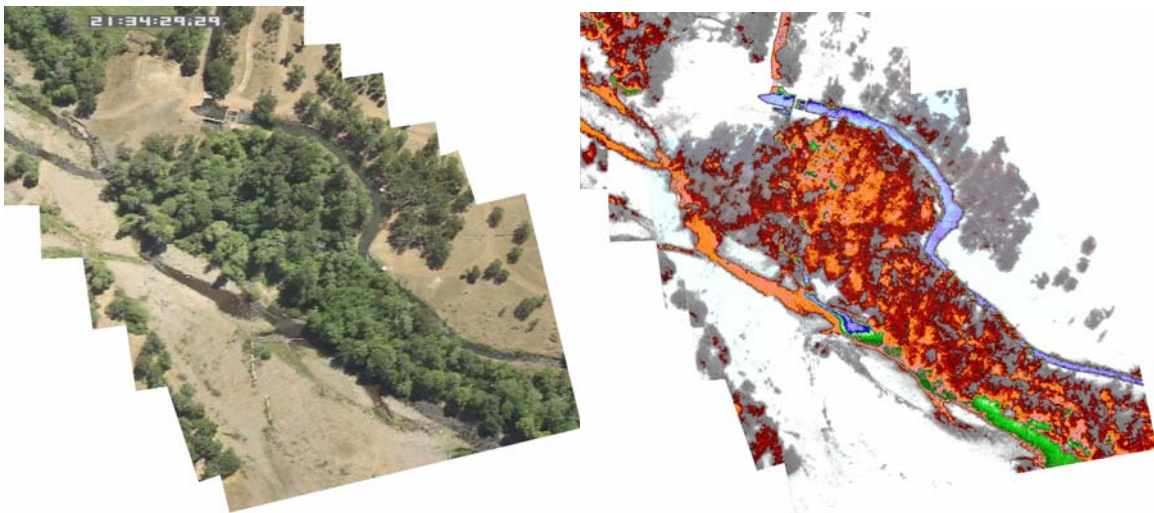
Frame: lb0426 – This image pair shows Antelope Creek (23.7°C) and a small pond (28.7°C) on the right bank at river mile 1.4.





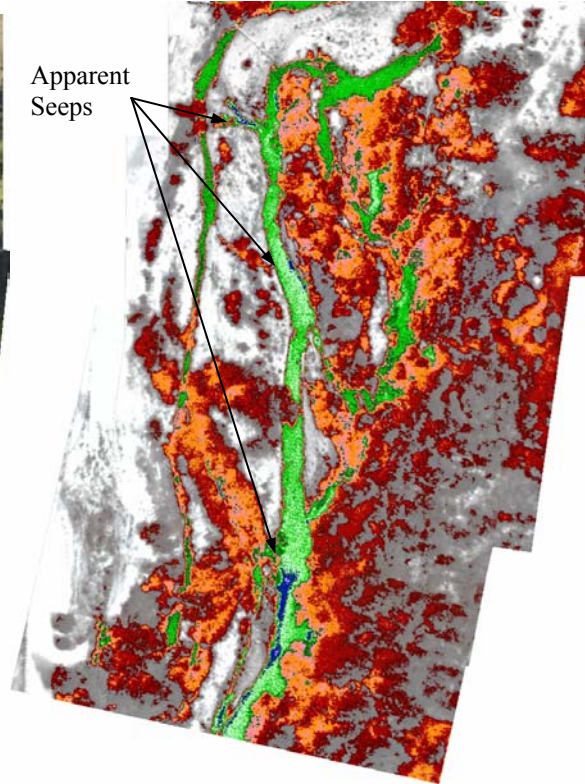
Frame: lb0467 – This is the confluence of Quarter Branch Creek (21.8°) to the right bank of Antelope Creek (23.6°C) at river mile 2.3.

South Fork Little Butte



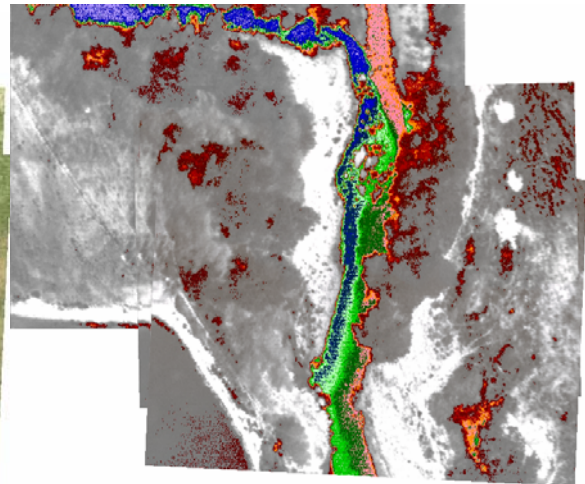
Frame: lb1085-1090 – The Medford Irrigation Canal is visible along the left bank at river mile 0.6 of South Fork Little Butte Creek (27.3°C). The canal emerges from underground and is cooler than the mainstream.





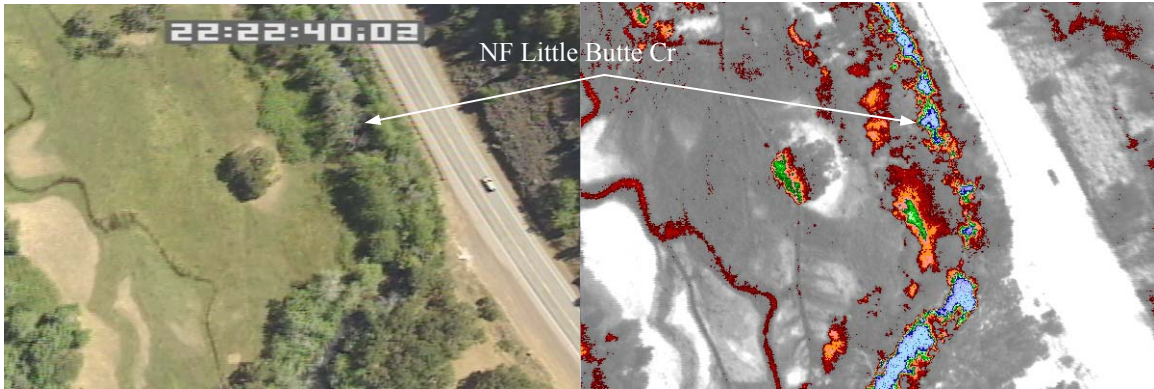
Frame: Mosaic lb1352-1356 – South Fork Little Butte Creek at river mile 6.7. Apparent cold water seeps are visible along both banks create local thermal variability with this reach.

NF Little Butte Creek

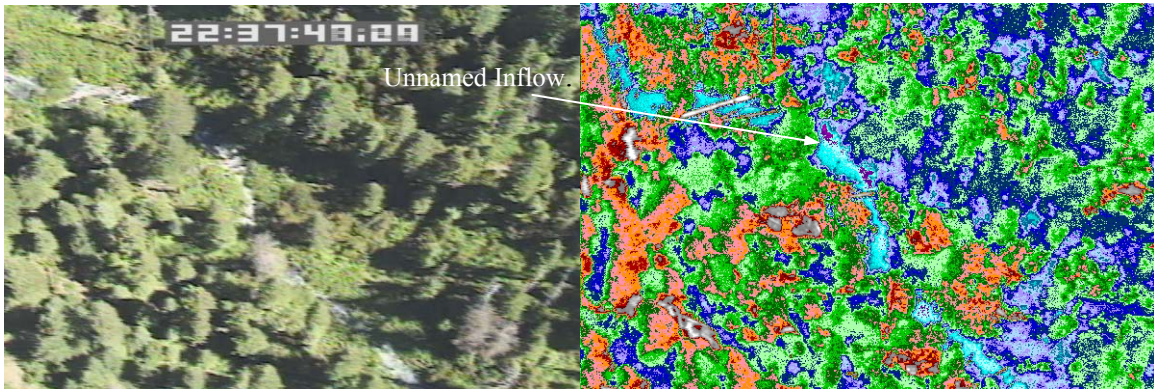


Mosaic: nflb0032-0034 – This image mosaic show the confluence of the SF Little Butte Creek (26.8°C) and the NF Little Butte Creek (22.2°C). Flow direction is from the top to bottom of the image and the NF Little Butte Creek flows in from the left side of the image.



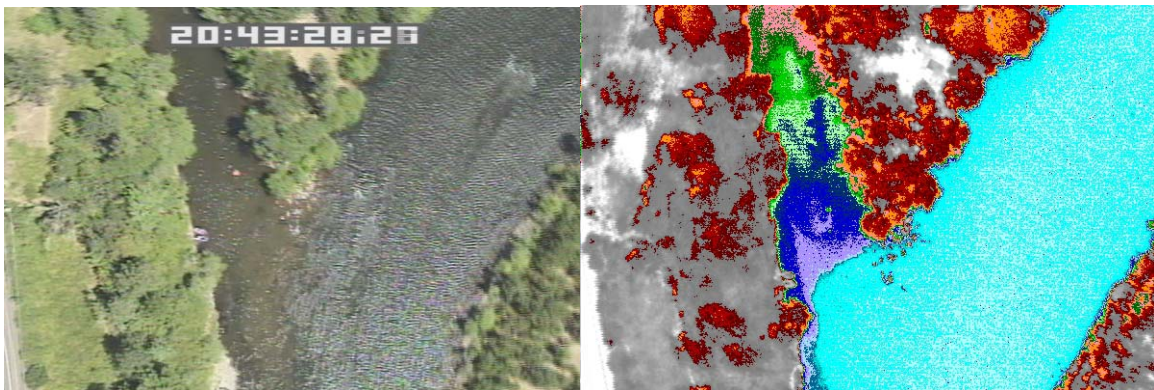


Frame: nflb0127 – Keno Gulch is detected along the right bank of NF Little Butte Creek (19.3°C) at river mile 2.4. However, there was not enough surface water visible in the image to obtain an accurate sample.



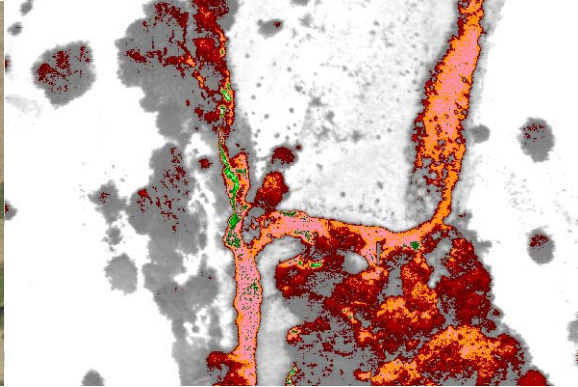
Frame: nflb0581 – This unnamed tributary (13.5°C) at river mile 14.0 is a cooling source for the North Fork Little Butte Creek.

Elk Creek

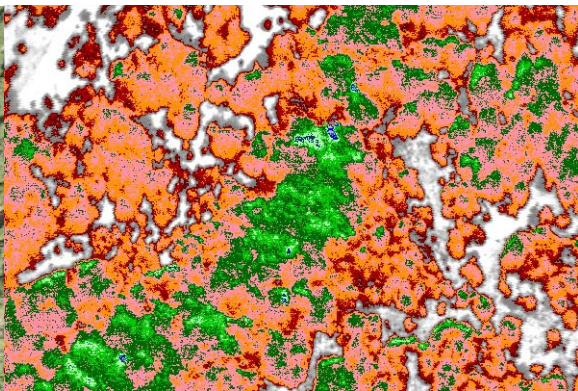


Frame: velk0041 – This image pair shows the confluence of Elk Creek (20.4°C) and the Rogue River (15.9°C). Flow direction is from the top to bottom of the image.





Frame: velk0254 – At river mile 4.4, a small, unnamed inflow (25.0°C) enters into the right bank of Elk Creek (26.6°C).



Frame: velk0776 – This image pair is representative of a section of creek from rm 14.8 to rm15.8 where canopy masks the stream surface and precludes an accurate sample.

