

Laboratory and Environmental Assessment Program

Air Quality Monitoring in The Dalles

Tuesday, March 21, 2017
Columbia Gorge Community College

Monitoring in The Dalles

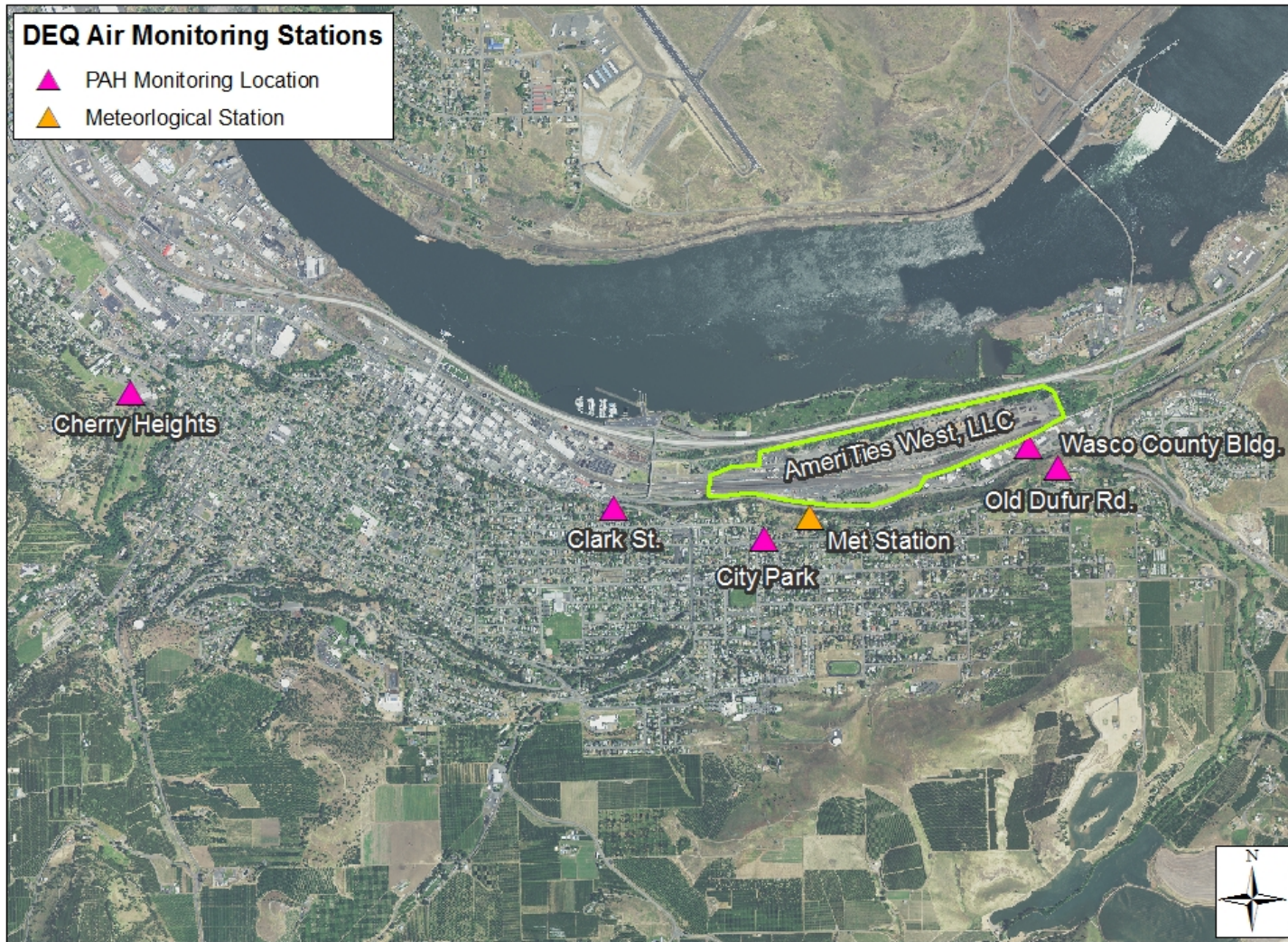
- ***Purpose***

- Collect data to if ambient air sample include compounds that present health risks to the community

- ***Timeline***

- June 2016 – sampling began
 - DEQ deployed samplers at 3 sites (Cherry Heights, City Park, Wasco County Planning)
 - Sampling for:
 - PAHs
 - wind speed & direction
- August 2016 – City Park completed
 - Sampler moved to Old Dufur Rd
- September (late) 2016 – Old Dufur Rd completed
 - Sampler moved to Clark Street
- November (mid) 2016 – Sampling completed at all sites

Map of Sampling Locations

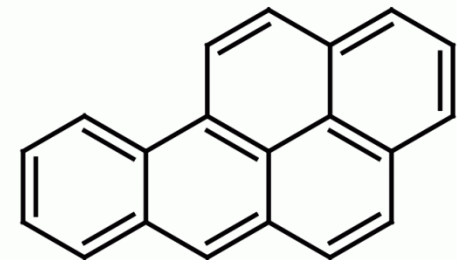
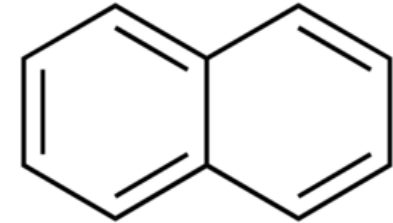


0 0.75 1.5 3 Miles

Prepared by:
D. Brown
March 2017

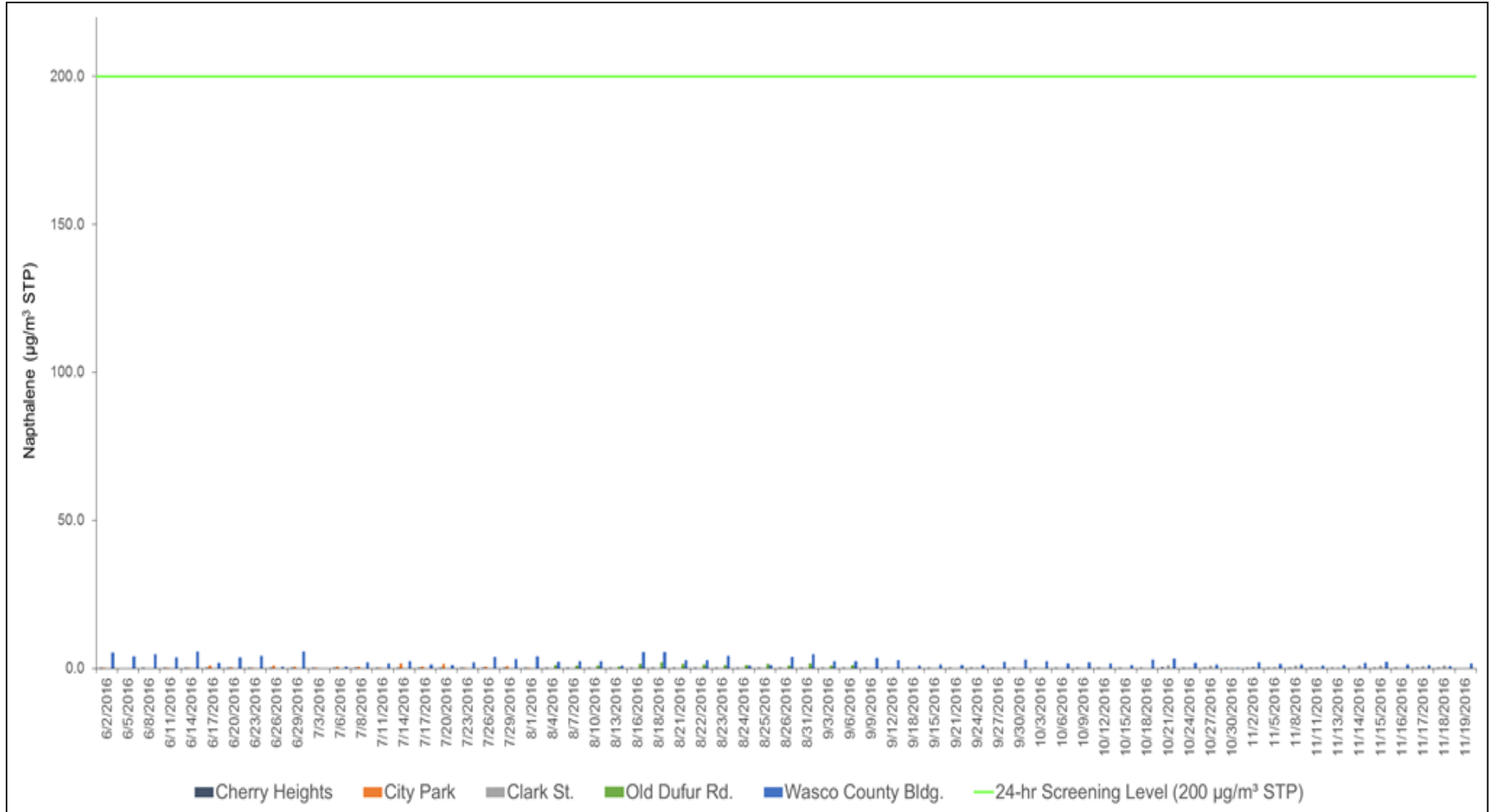
What are PAHs?

- **Definition**
 - Class of > 100 chemicals
 - Aromatic
- **Sources**
 - Naturally occurring in coal, oil, & gasoline
 - Formed during incomplete combustion of coal, oil, wood, garbage, etc.
- **Potential Risks**
 - Short term only in extremely high concentrations
 - Potential increase in cancer risk from lifetime exposure



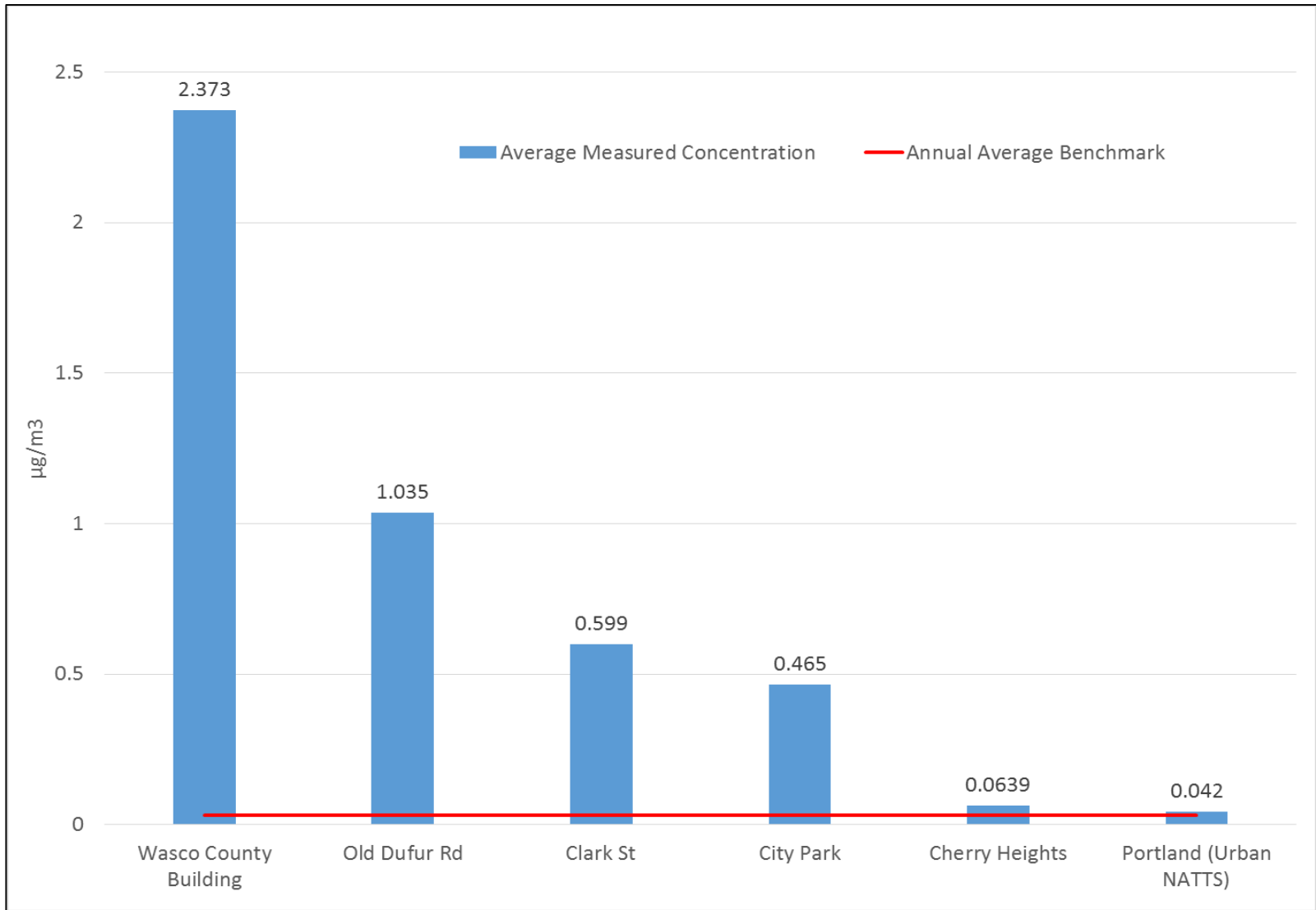
Naphthalene

(Evaluating daily samples for short term risk)

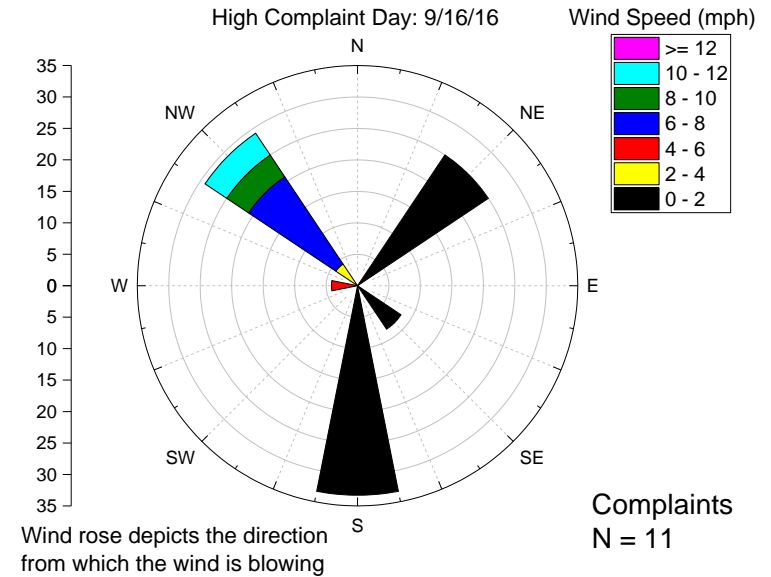
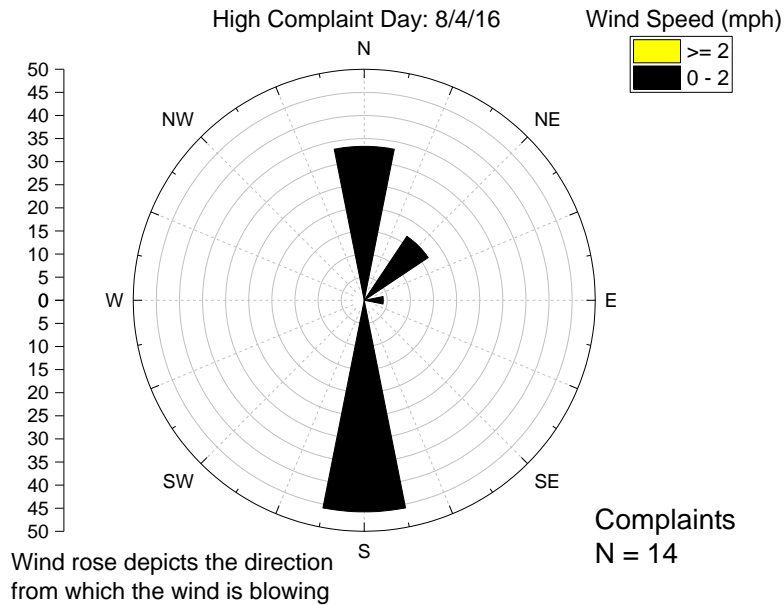


Naphthalene averages

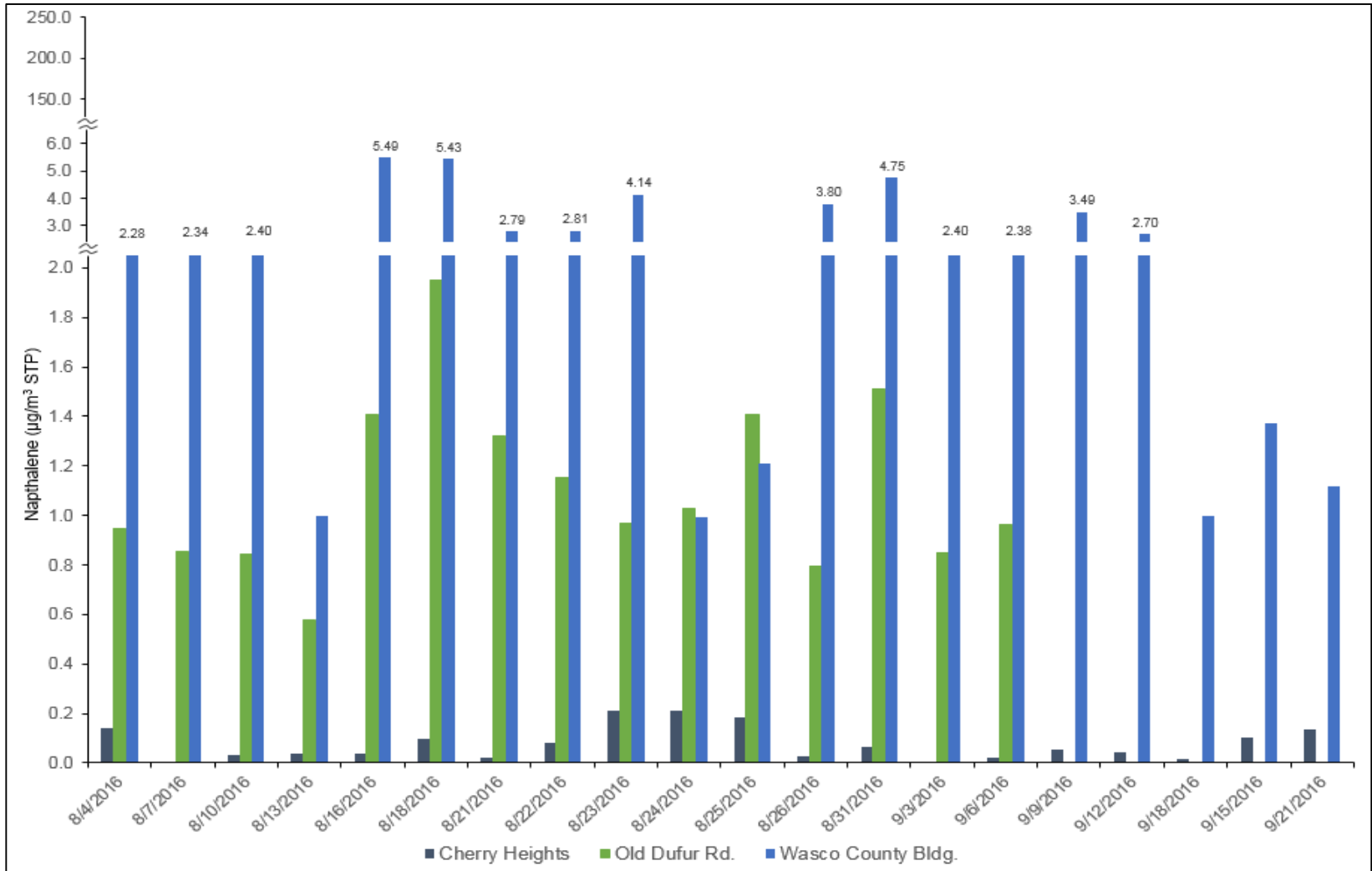
(compared to Annual Average Benchmarks)



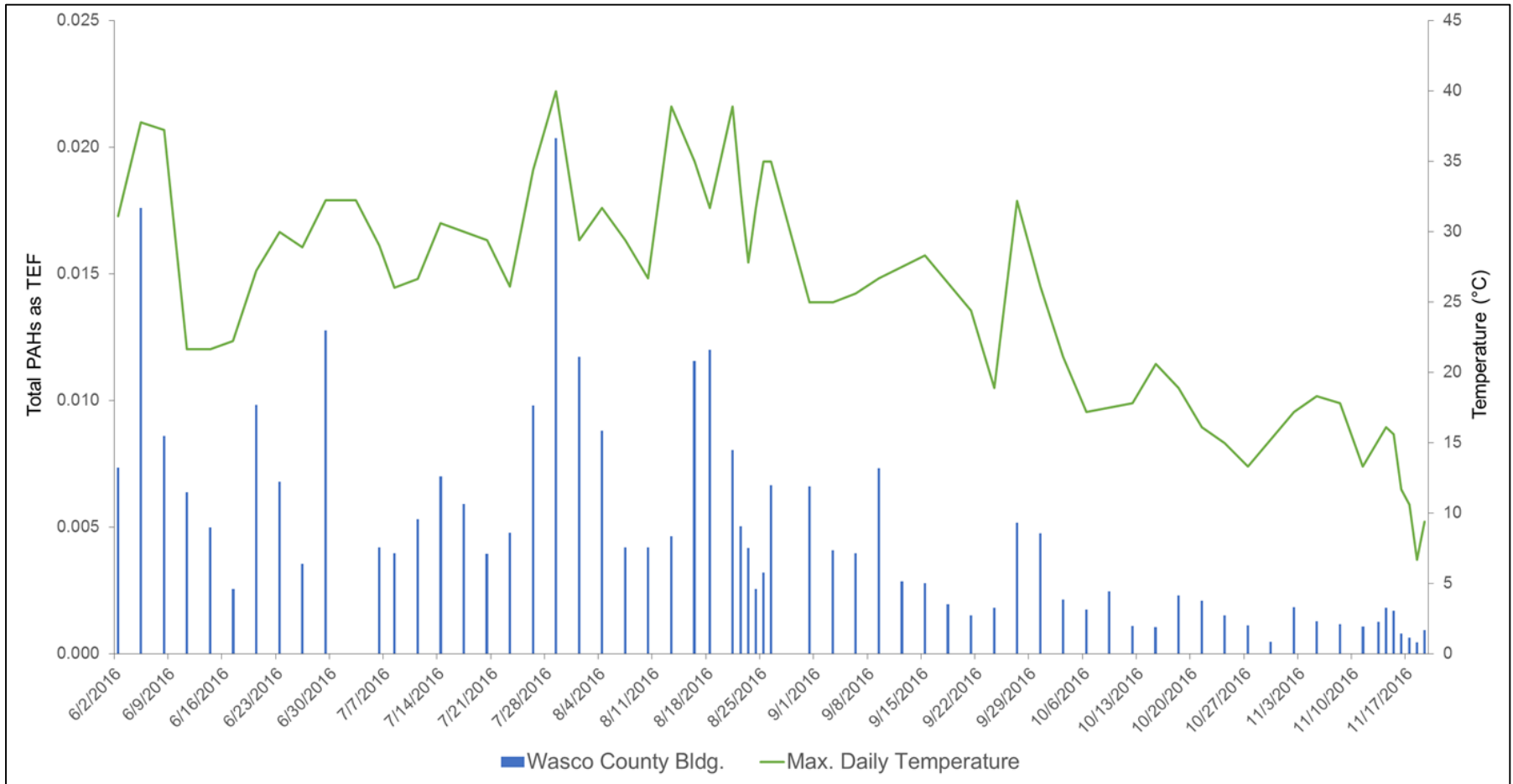
Wind vs Complaints



Naphthalene



Total PAHs vs. Temperature



Follow-up Monitoring

- **Purpose**

- Determine if emissions from tie production facility have changed based on the change in formulation of the preservative

- **Timeline**

- July - August 2017 – follow-up sampling
 - DEQ will deploy samplers at 3 sites
 - (Cherry Heights, Old Dufur, Wasco County Planning)
 - Sampling for:
 - PAHs
 - wind speed & direction (at on-going met station)



Air Quality Information

Visit our online map for data and information

<http://www.oregon.gov/deq/air/Pages/Air-Quality-Map.aspx>

The screenshot displays a web-based air quality monitoring interface. At the top, there are two buttons: "Find Data" and "Measure". Below these is a search bar containing "The Dalles Cherry Heights" and a dropdown arrow. To the right of the search bar is a pagination control showing "1 of 2".

The main content area is a popup window titled "The Dalles Cherry Heights". It includes the following information:

- Layer:** Focused Air Monitoring
- Facility Information:**
 - Project: The Dalles (PAHs Only)
 - Station Location: The Dalles
 - Monitoring Dates: 05/31/2016 to 11/19/2016
 - N/A to N/A
 - Samples collected: PAH

At the bottom of the popup, there are two links: "View Additional Details" and "Edit Feature".

The background is a map of the Dalles area, Oregon, showing the Columbia River, The Dalles Municipal Airport, and various streets including W 2nd St, W 10th St, Union St, E 3rd St, E 10th St, E 2nd St, E 15th Pl, Mt Hood St, Kelly Ave, and Columbia View Dr. A red location pin is placed on the map near the station location.

Next steps for Health: Interpreting Health Risks

Ehap.info@state.or.us



ENVIRONMENTAL PUBLIC HEALTH ASSESSMENT PROGRAM (EHAP)

www.healthoregon.org/ehap

Overview

- OHA and ATSDR's roles
- Short-term health risks
- Long-term health risks → Health Consultation (HC) Process
- Community ask/input: Timing of the HC

AGENCY ROLES



Advise
Analyze
Make recommendations



Monitor
Permit
Regulate

Short-term health risks



No short-term risk for exposure to naphthalene or total Polycyclic Aromatic Hydrocarbon (PAHs) from air data collected around AmeriTies

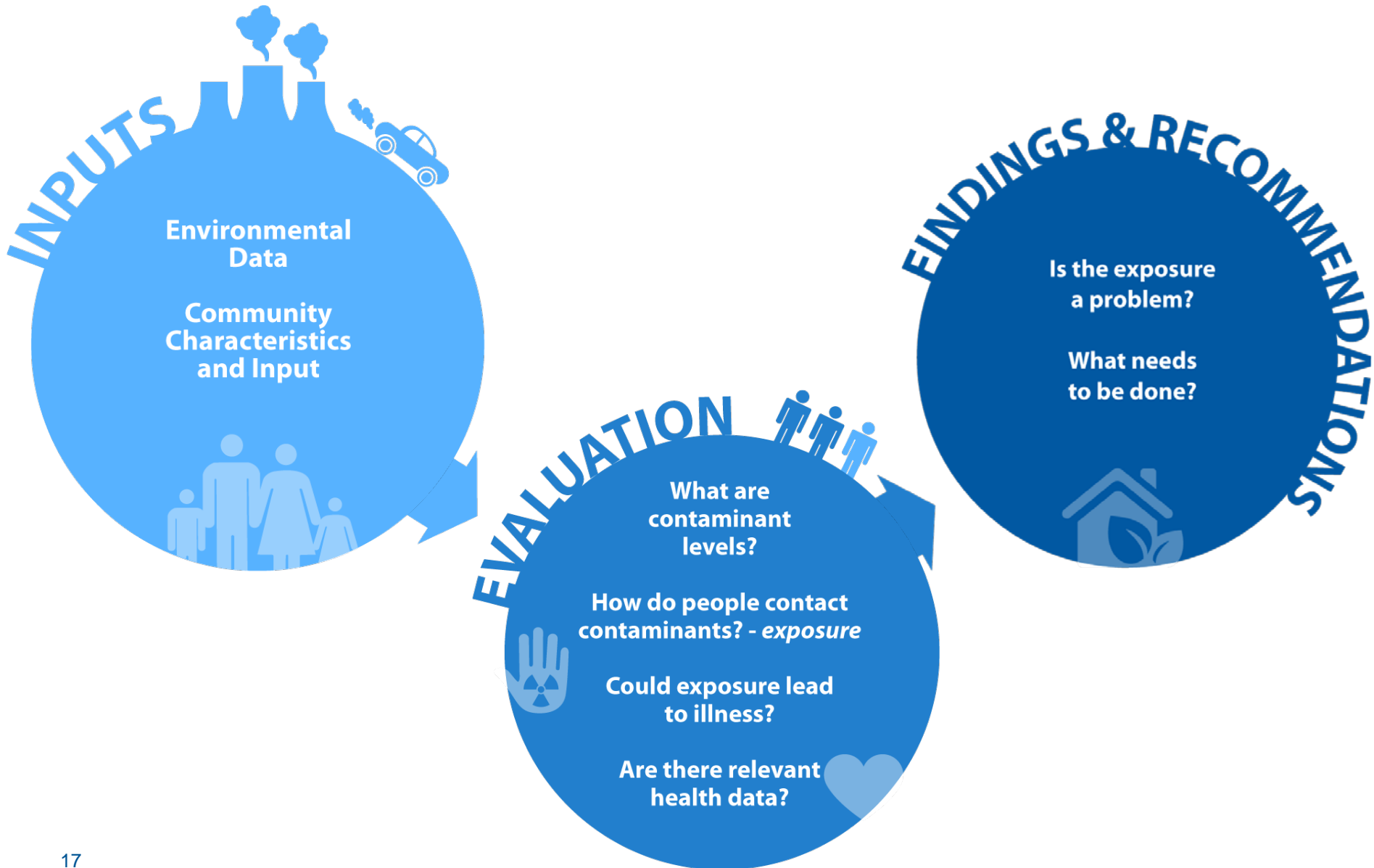
Long-term health risks?



Some data do exceed screening levels for lifetime exposure

Health Consultation will do an in-depth analysis

What is a Health Consultation??



Screening values

- Identifies contaminants of concern for further investigation
- Eliminates contaminants that don't pose health risks
- HC uses values established by ATSDR



What environmental data will be considered in the HC?



Before new formulation

2016

June-November

After new formulation

2017

To be Determined (TBD)

We would like your input:



 OPTION A:
One Health Consultation

 OPTION B:
Two Health Consultations

OPTION A

One comprehensive report

2016 and 2017 data, 2 sets of conclusions

Expected release spring 2018

Conducted by ATSDR



OPTION B

Two separate Health Consultations

One HC for 2016 data, and one for 2017 data

Expected release, fall 2017 and spring 2018

First one conducted by ATSDR

Ehap.info@state.or.us

971-673-0977

www.healthoregon.org/ehap

DEQ AmeriTies Web Page

www.oregon.gov/deq/Programs/Pages/AmeriTies-West.aspx