

Built Environment Strategic Plan

Item H: Informational item
July 21, 2022, EQC meeting

Amanda Ingmire, DEQ Built Environment program
Sun Joo Kim, Charrette Venture Group, Diversity in Design

what is the built environment?



Built environment

Physical

Homes
Workplaces
Schools
Community space
Parks

Social

Gathering
Worshiping
Celebrating
Protesting
Right to Root

Infrastructure

Roads
Rail
Transit
Energy
Water
Waste
Internet

Economic

Development
Ownership
Jobs

Systems

Codes
Policies
Planning

Human Outcomes

Access
Agency
Impacts
Adaptability
Vulnerability
(in)equity

why the built environment?



materials management priority

Materials Management in Oregon 2020 Framework for Action



Painted Hills, Wheeler County

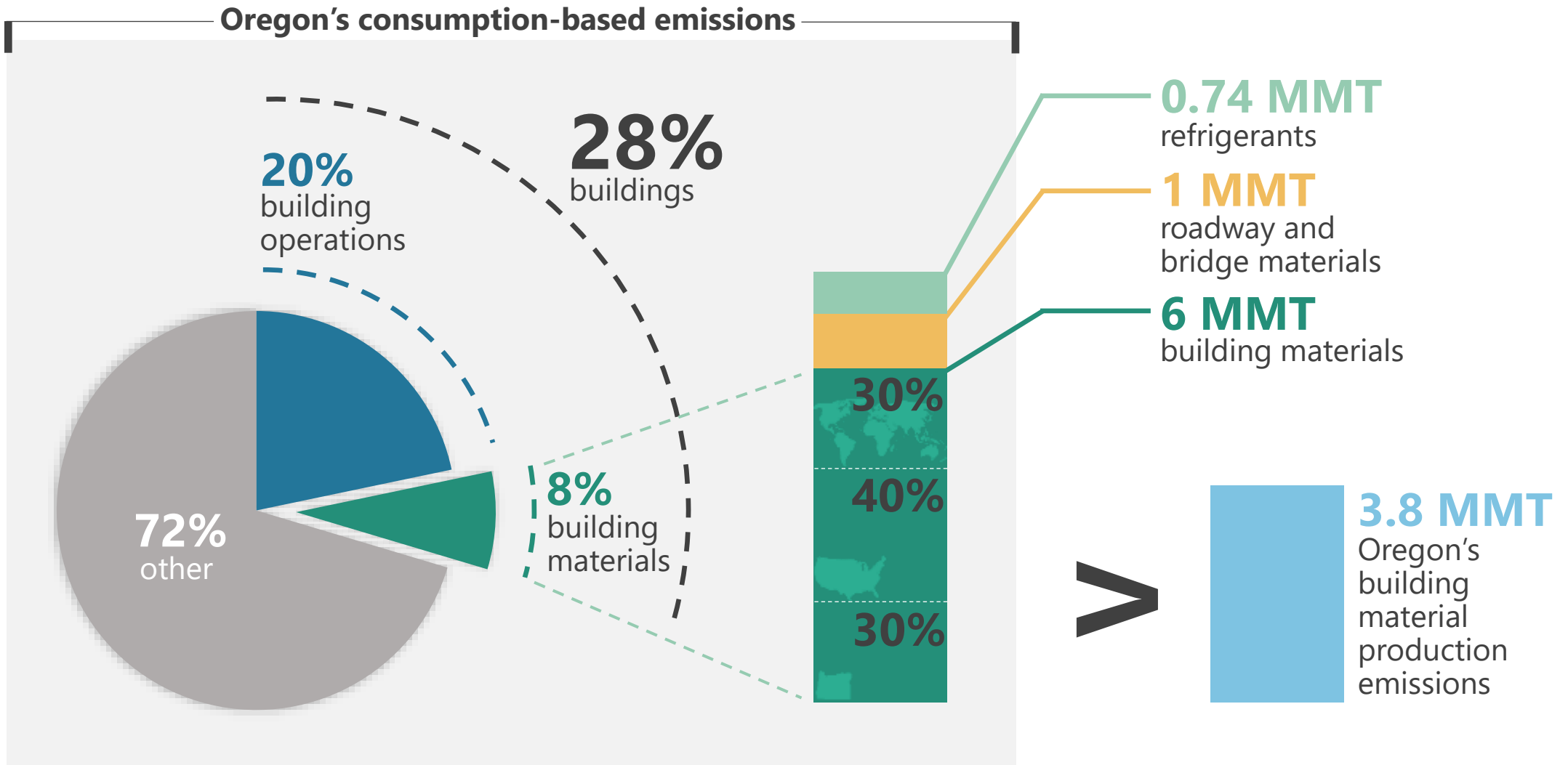
Materials Management in Oregon

2050 Vision and Framework for Action

Adopted by the
Environmental Quality Commission
December 6, 2012



climate crisis



toxics and human health

Carcinogens

Asthmagens

Neurotoxicants

Developmental toxicants

Endocrine disruptors

Increase ground-level ozone concentrations

Dioxin production

Bioaccumulation

Respiratory irritation and infection

Impairment of human immune systems

Damage to wildlife

Reproductive toxicant

Thyroid hormone disruption

Memory loss

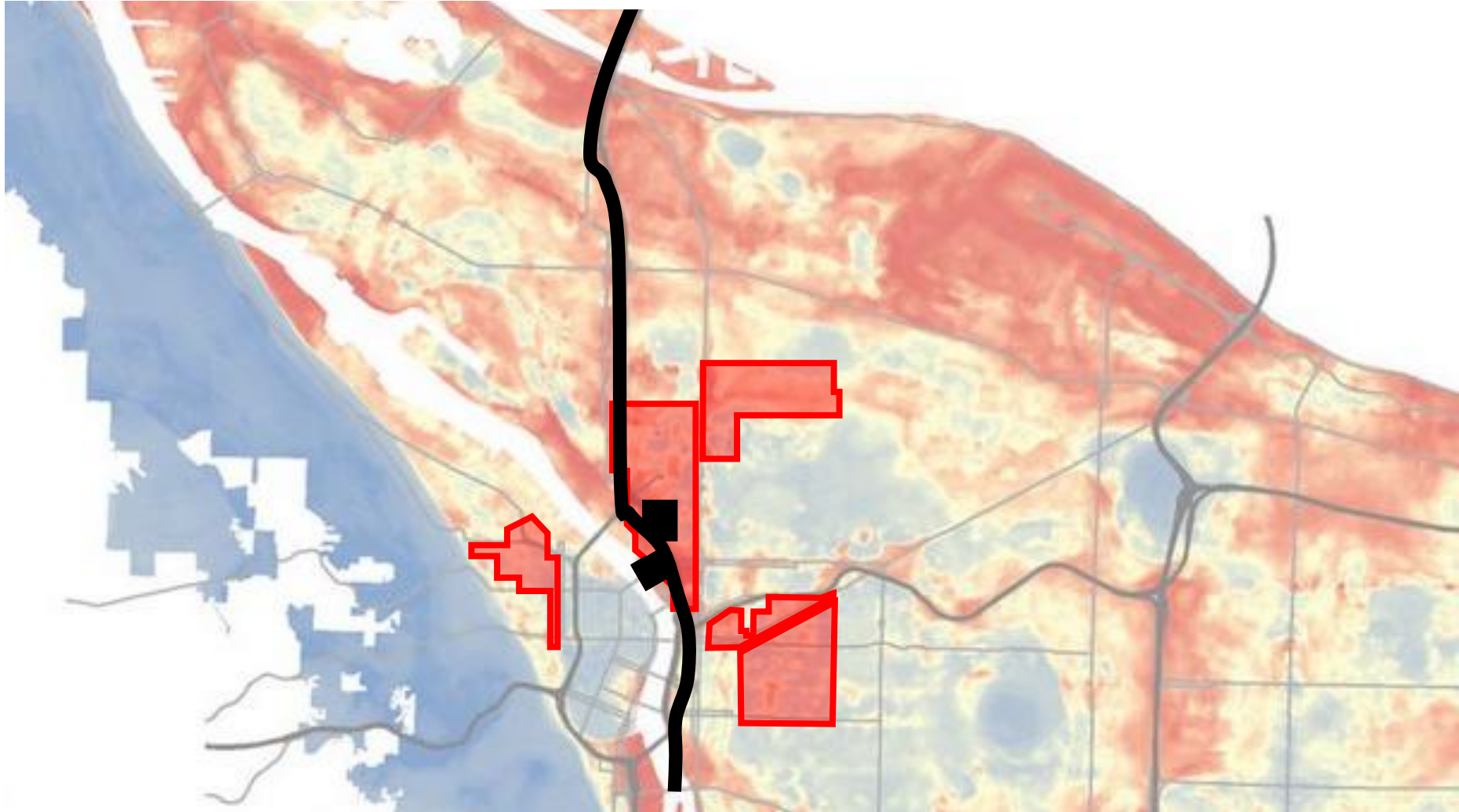
Eye irritation

Liver damage



systemic injustices: redlining

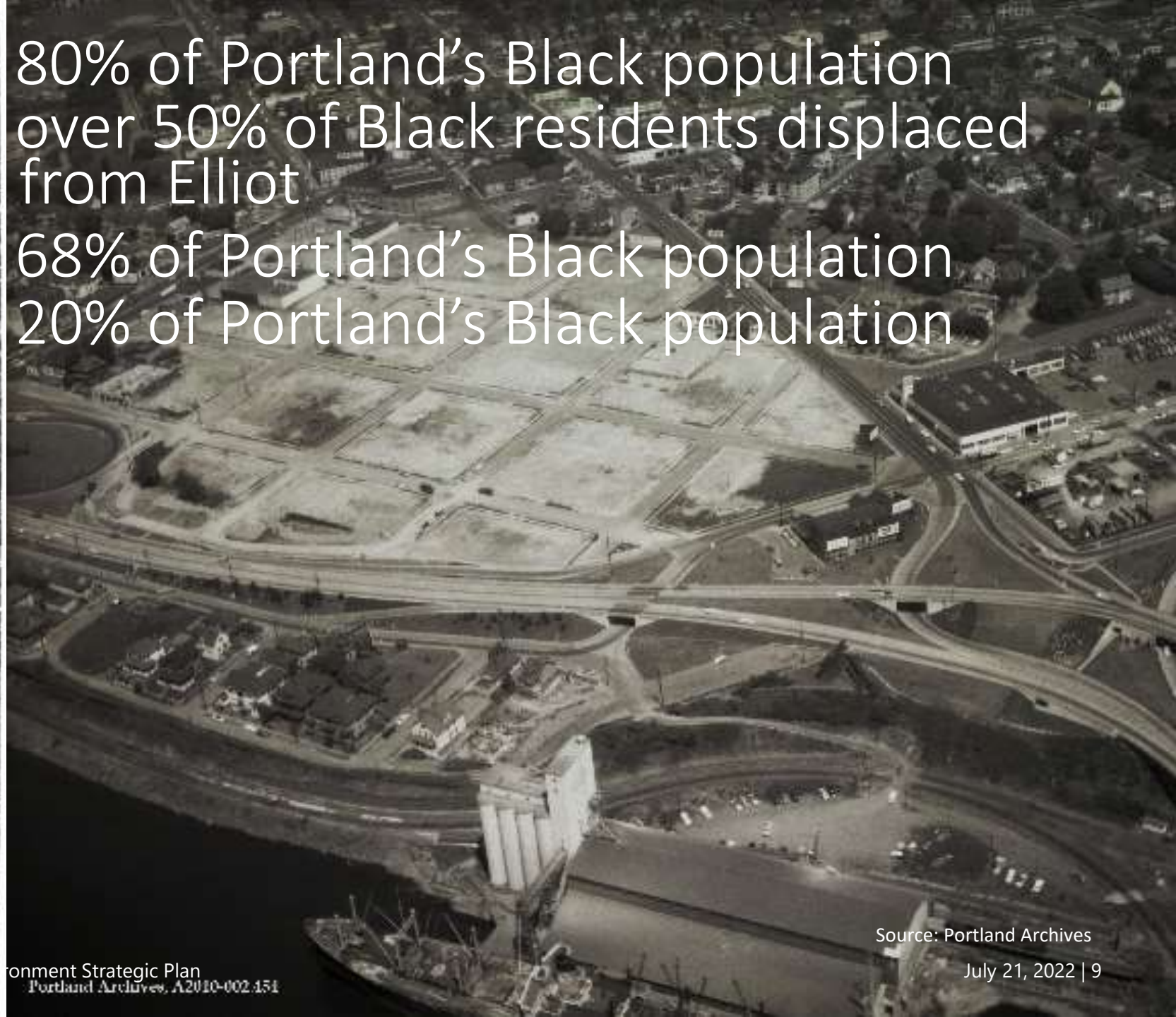
1919
1950s
1960s
1970s





1960s
 1970s
 1990s
 2010s

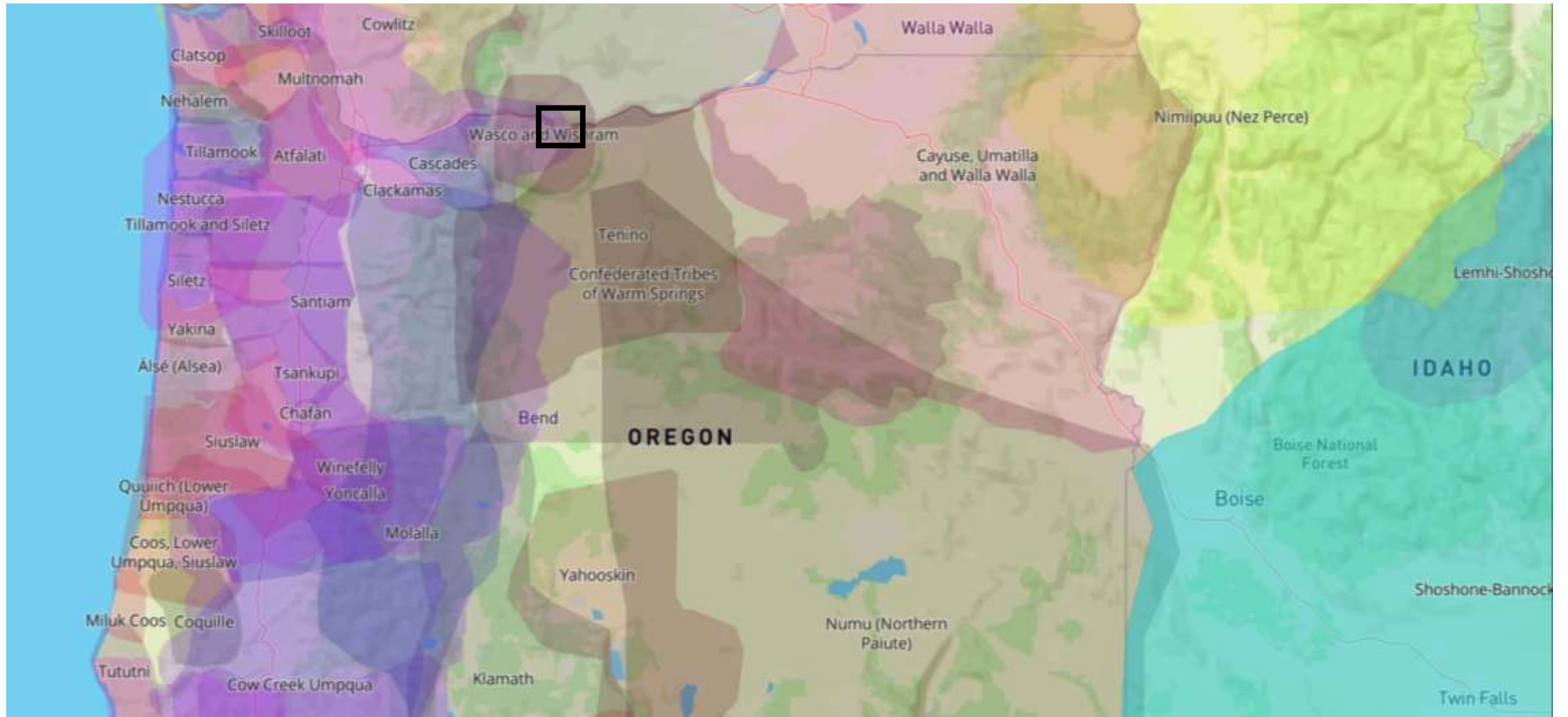
80% of Portland's Black population
 over 50% of Black residents displaced
 from Elliot
 68% of Portland's Black population
 20% of Portland's Black population



MINNESOTA FREEWAY CONSTRUCTION
 LOCKING NORTH



systemic injustices: native land



systemic injustices: Celilo Falls



Celilo Lake



why? Dalles Dam



“You can’t have climate change without sacrifice zones, and you can’t have sacrifice zones without disposable people, and you can’t have disposable people without racism.”





SPEED
LIMIT
30

TRUCK
BUS
USE
RIGHT
LANE

strategic planning approach



guiding concepts



equity and
racial justice



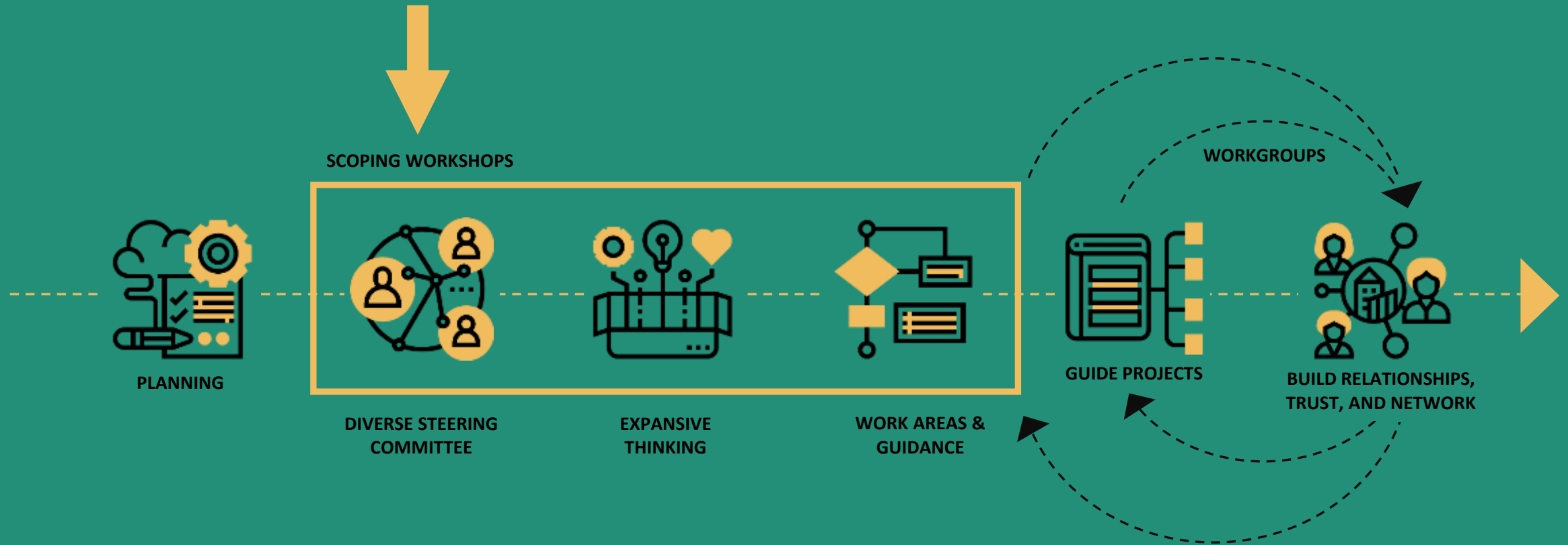
emergence
and iteration



co-creation

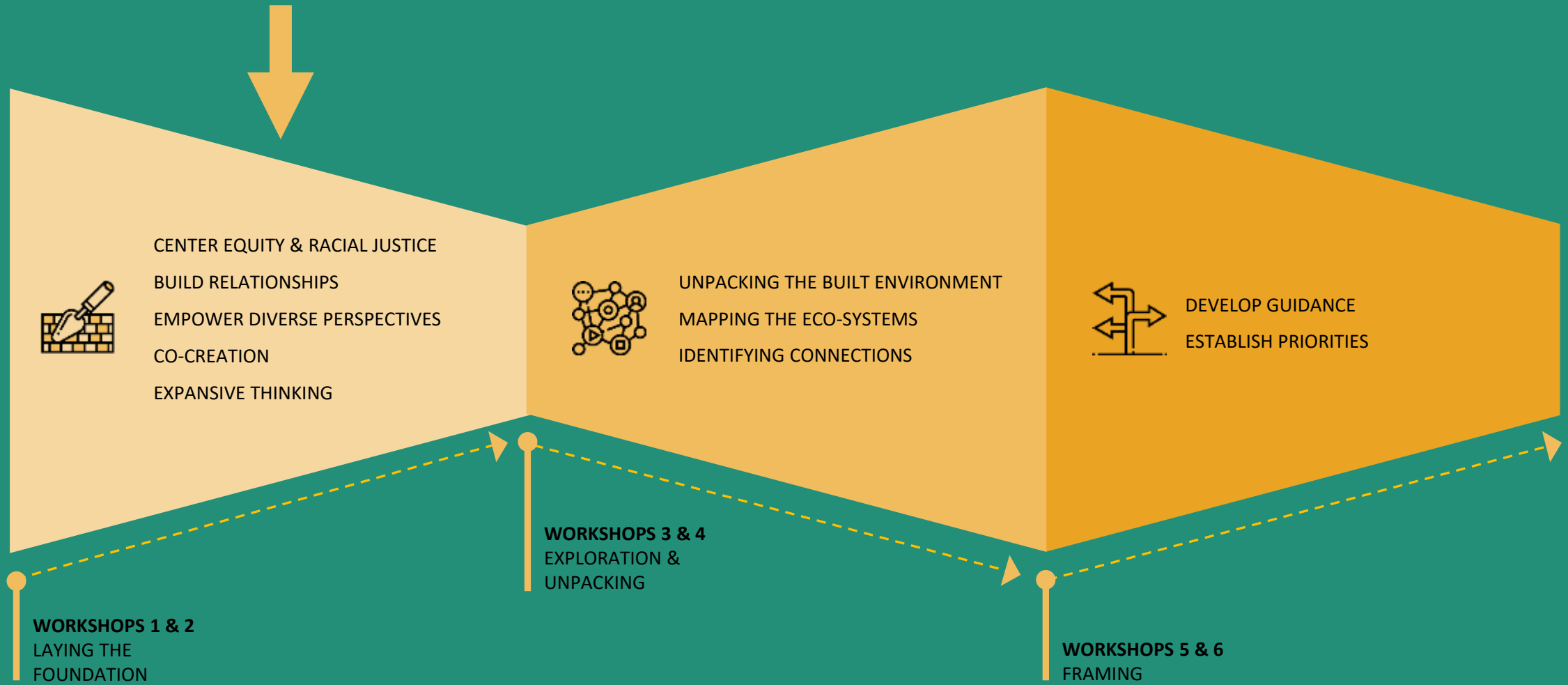
roadmap

built environment strategic plan approach



roadmap

scoping workshops approach



steering committee



frameworks



Design Justice

Asks designers to use the process and outcomes of design to **dismantle the structures which use design to perpetuate racist and other oppressive systems.**

Emergent Strategy

Openness to new strategies, ideas, and ways of doing and being that emerge over time

Grow a compelling future together through relatively simple interactions

Enhancing Well-being

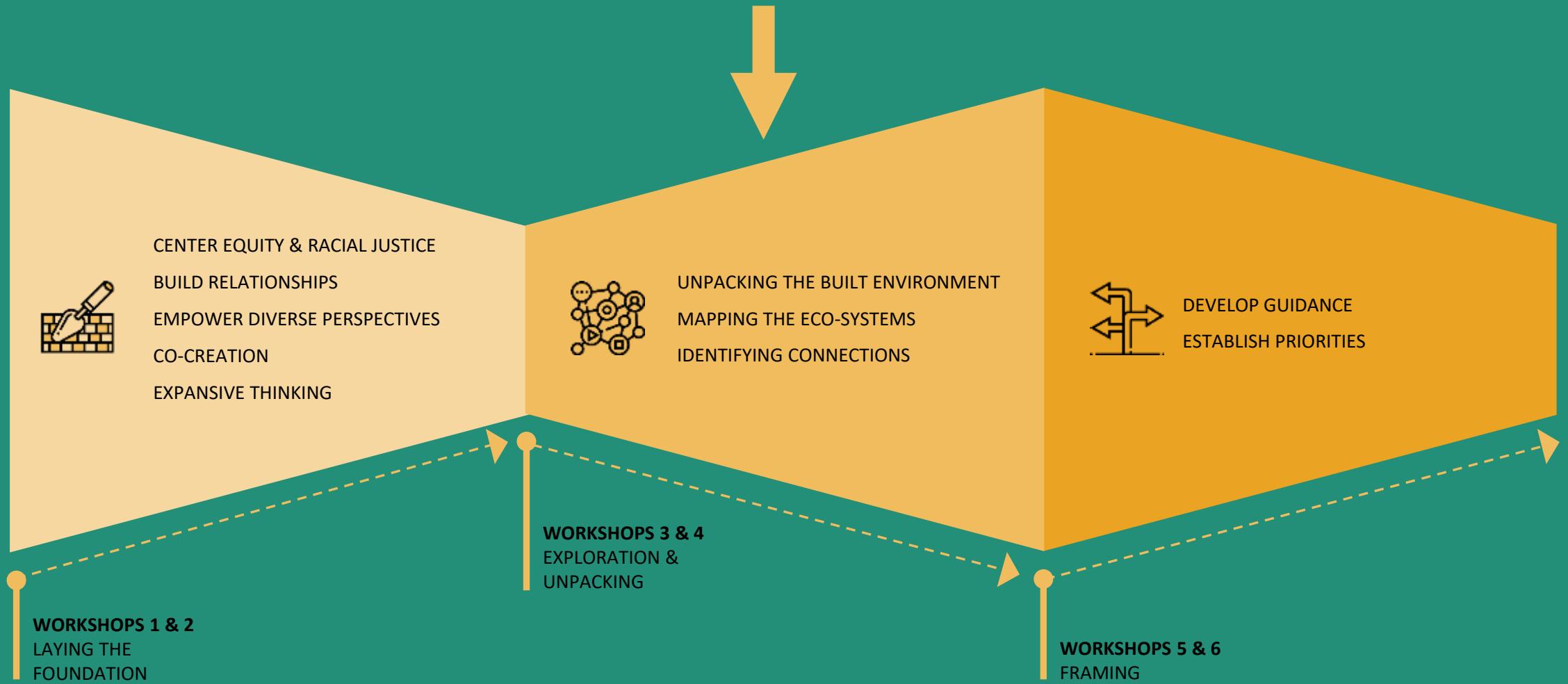
Centering the well-being of **people and place** at the intersection of the systems and flows in which they exist

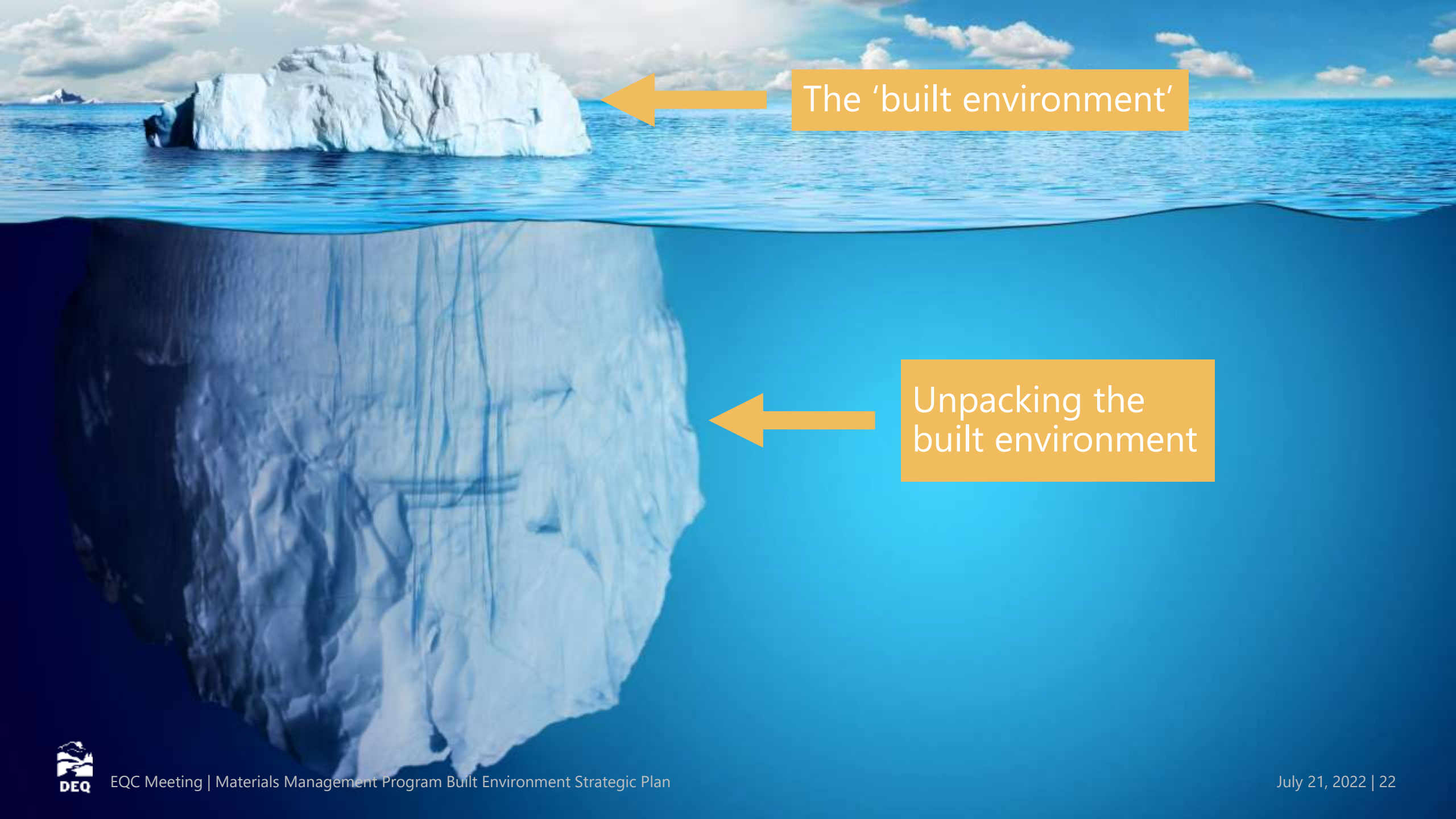
Drawing **connections** between seemingly disparate activities

Essential to good governance

roadmap

scoping workshops approach

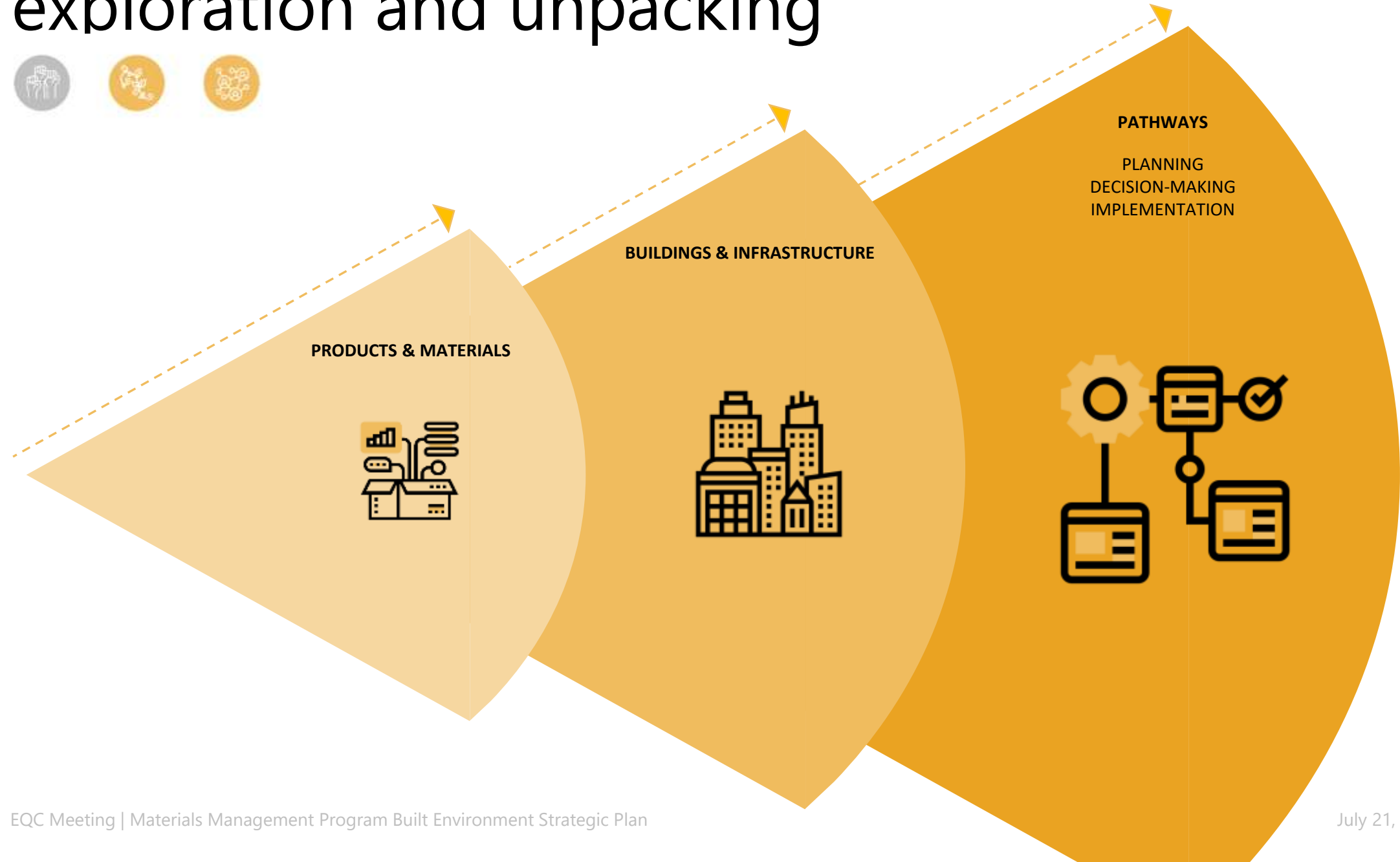




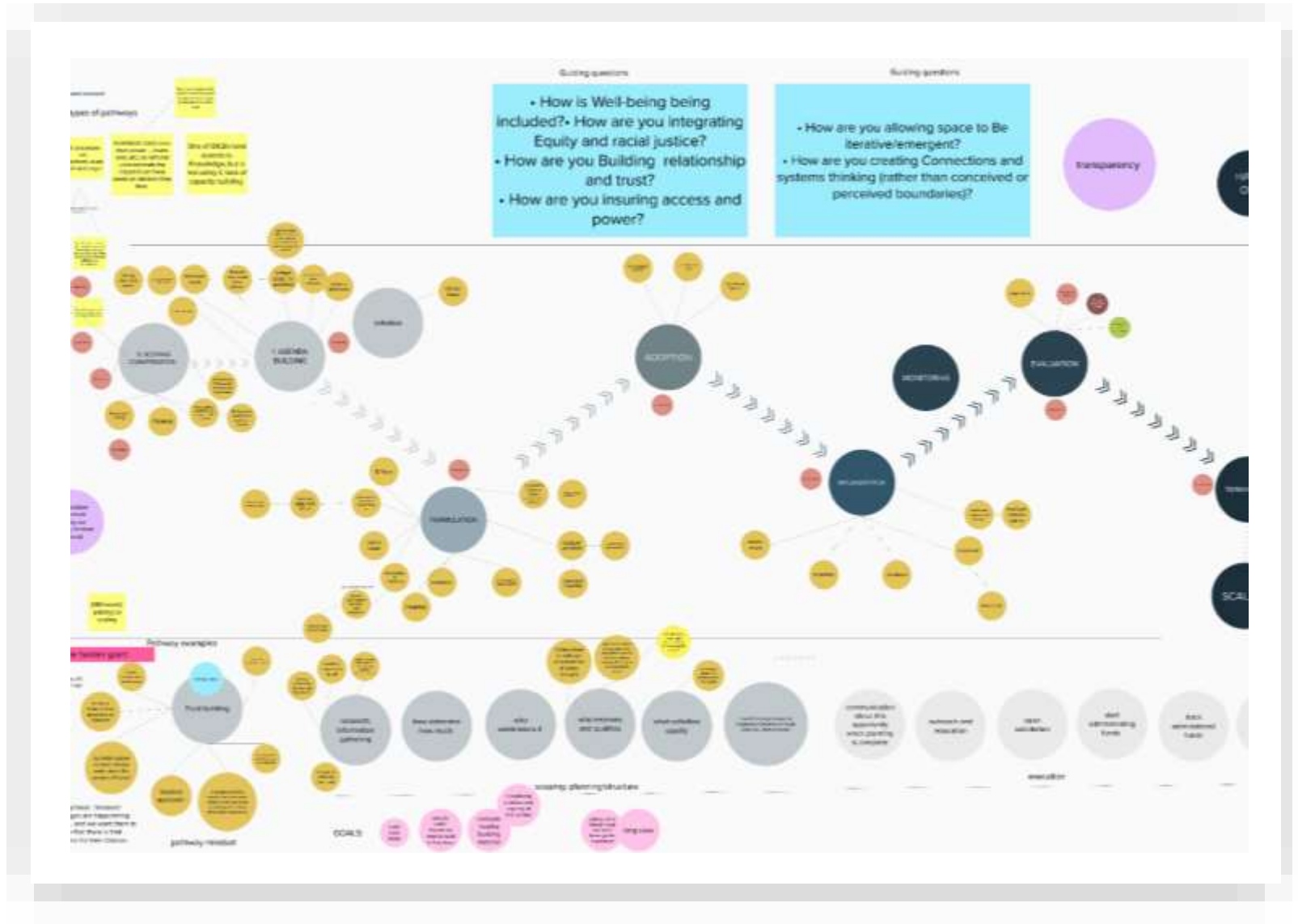
The 'built environment'

Unpacking the built environment

exploration and unpacking

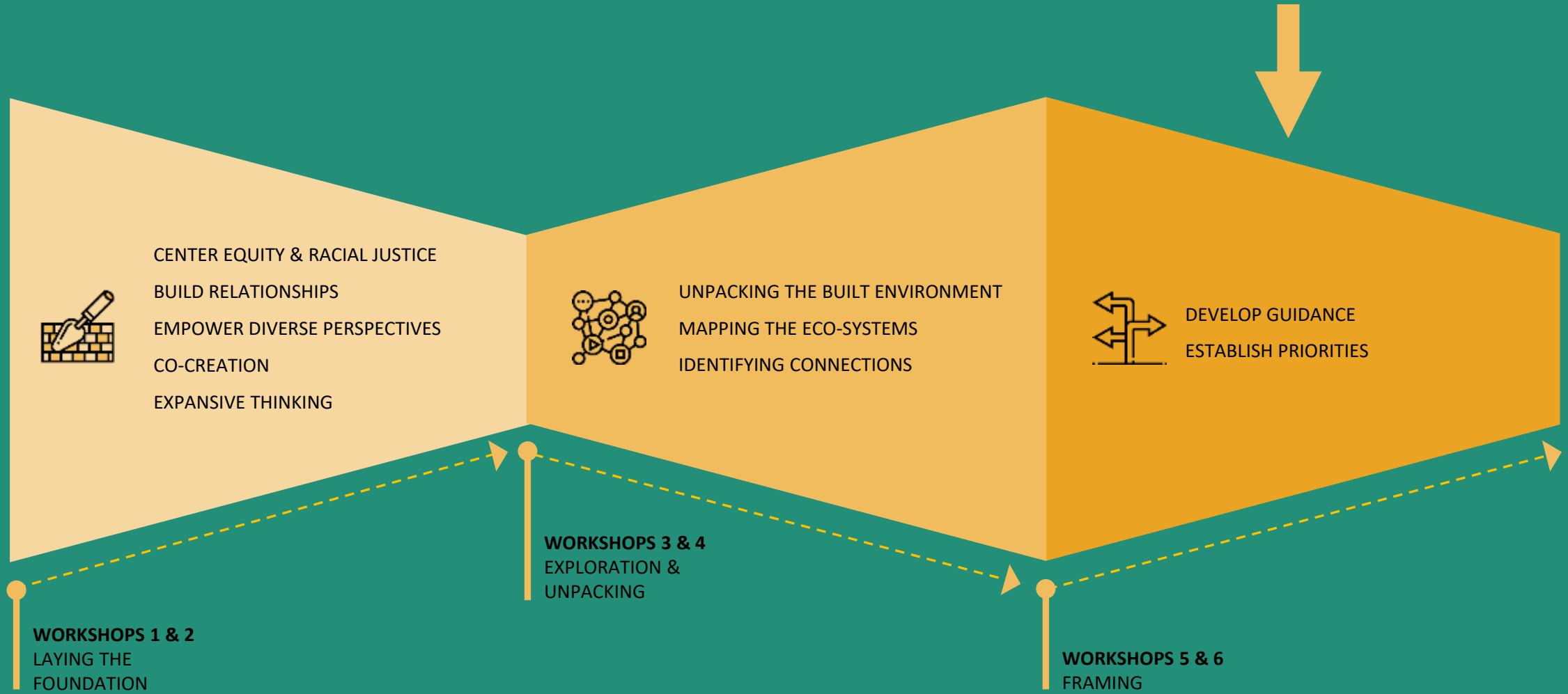


mapping the built environment ecosystem



roadmap

scoping workshops approach

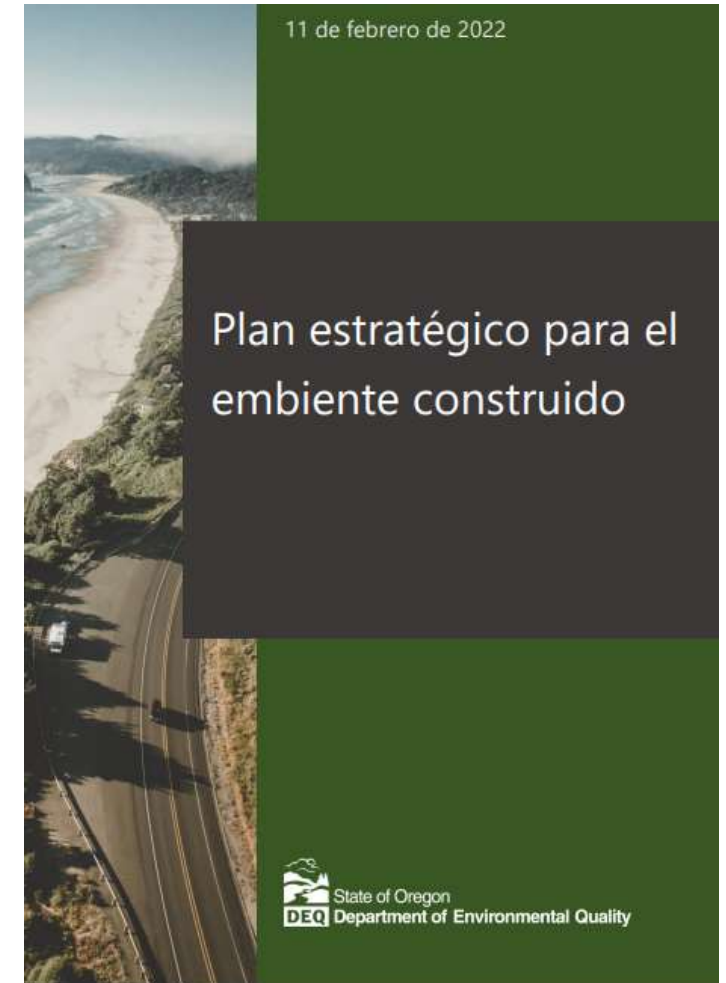




overview of the Built Environment Strategic Plan



Built Environment Strategic Plan



priority areas of work



Building relationships and capacity



Climate and resilience



Design justice and stewardship



Housing



Infrastructure



guidance



The work of the built environment program should address **all six areas of guidance**



Justice, equity,
diversity, and
inclusion



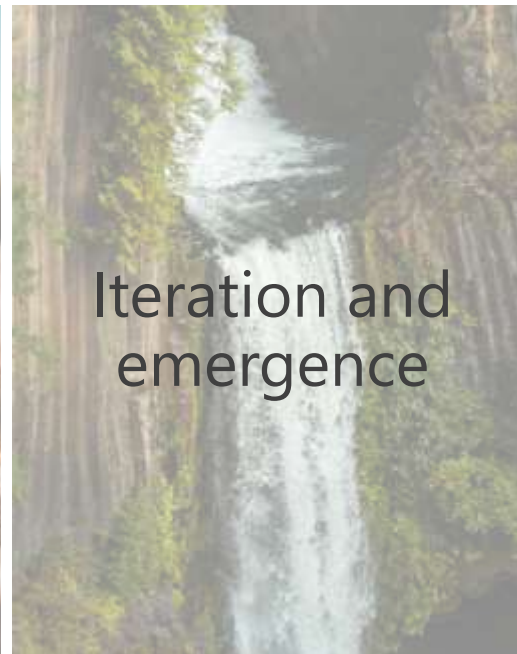
Systems
thinking



Capacity,
relationships,
and trust



Access and
decentralized
power



Iteration and
emergence



Well-being

Built Environment Strategic Plan in action



2022 foundational projects

Listening sessions

Map Oregon's building material flows and impacts

Transparency disclosure incentive

Pilot projects

Building code opportunities for material impact reduction

2022 foundational projects

	Justice, Equity, Diversity, Inclusion	Systems Thinking	Capacity, Relationships, Trust	Access, Decentralized	Iteration, Emergence	Well-being
RESEARCH	Listening sessions	X	X	X	X	X
	Map Oregon's building material resource flows and impacts	X	X	X	X	X
	Building code opportunities for material impact reduction	X	X	X	X	X
DIRECT ACTION	Transparency disclosure incentive	X	X	X	X	X
	Pilot projects	X	X	X	X	X

listening sessions

“The essential first step requires the BE program to focus on deep listening and building relationships. It is critical to take the necessary time to build trust and cultivate a community of partners, particularly centering people and communities who are most burdened by the impacts of the built environment. This engagement must be focused on listening and learning – being influenced by more voices, learning what others are prioritizing and need, learning what others are already doing, identifying opportunities to support, and empowering the people and communities who are most impacted to have agency and decision-making power in their built environments.”



listening sessions: overview

- Projected timeline: ongoing-early 2023
- Target audiences:
 - Impacted Communities
 - Government entities
 - Industry
- Currently evaluating proposals for a contractor focused on design and facilitation of the Impacted Community sessions

listening sessions: goals

1. Communication

- Why DEQ is prioritizing the built environment
- What guides the program's decision-making (Built Environment Strategic Plan, guidance, priority areas of work)

2. Listening and learning

- Connect with Impacted Communities, governing bodies, and industry
- Learn about the priorities and needs of these three audiences
- Center the perspectives of Impacted Communities

3. Build relationships and trust, demonstrate accountability

- Communicate how input will inform and guide the work of the program
- Demonstrate accountability through multiple check-ins and creating an open dialogue

questions?

Built Environment program webpage:

<https://www.oregon.gov/deq/mm/production/Pages/Built-Environment.aspx>

Contact Information:

Amanda Ingmire, Architect, Senior Policy Analyst

amanda.ingmire@deq.oregon.gov

Sun Joo Kim, Architect, Senior Management Consultant

sunjoo@charrettevg.com

