

REV.	DATE	DESCRIPTION
△	24 JUNE 2022	REVISION FOR POE
△	22 JULY 2022	REVISIONS FOR ADDENDUM NO. 1 & ADDENDUM NO. 2
△	04 AUG 2022	ADD ALT. #4



DATE: 10-01-2022
 PROJECT: 20005-1
 SHEET: C5.12

GENERAL UTILITY PLAN NOTES

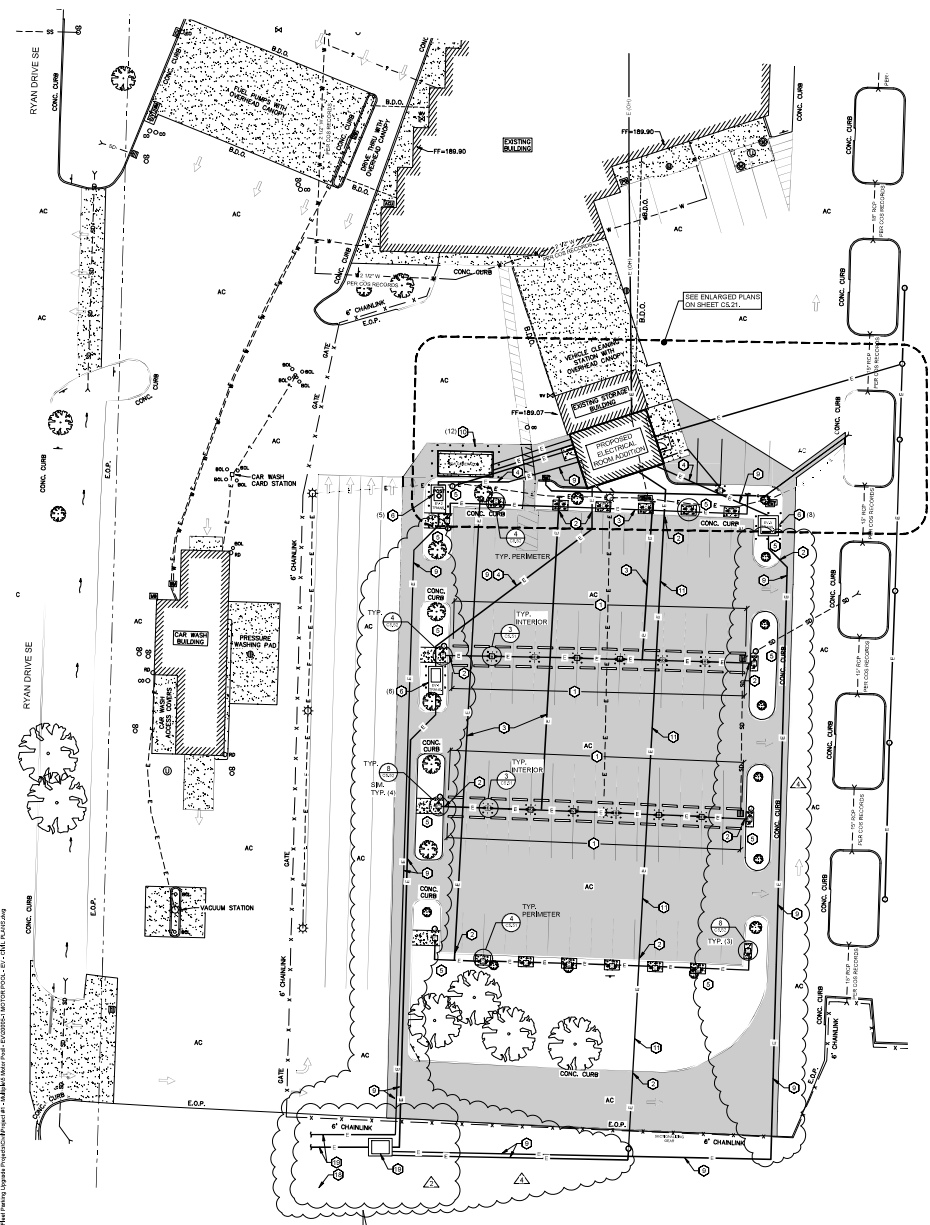
- ALL CONSTRUCTION IN A PUBLIC RIGHT-OF-WAY OR EASEMENT SHALL BE IN ACCORDANCE WITH THE LOCAL JURISDICTIONS STANDARD CONSTRUCTION SPECIFICATIONS AND ANY SPECIAL PROVISIONS INCLUDED AS A PART OF THE APPROVED PLANS.
- OREGON LAW REQUIRES YOU TO FOLLOW RULES ADOPTED BY THE OREGON UTILITY NOTIFICATION CENTER. THOSE RULES ARE SET FORTH IN ORM 920.001-010 THROUGH 920.001-010-010. YOU MAY OBTAIN COPIES OF THE RULES BY CALLING THE CENTER. THE TELEPHONE NUMBER FOR THE OREGON UTILITY NOTIFICATION CENTER IS 800-202-1887.
- SEE SITE PLANS FOR SITE DIMENSIONS, PARKING LAYOUTS, IDEALMA WIDTHS, AND SIMILAR INFORMATION.
- VERIFY EXACT POSITIONS OF UTILITY SERVICE ENTRY POINTS WITH LANDSCAPE AND ELECTRICAL PLANS, BY OTHERS.
- CONSTRUCT PRIVATE UTILITY TRENCH BEDDING AND BACKFILL PER DETAIL 1-3 ON CS-5.1.
- STORM DRAIN PIPE MATERIAL
 WITHIN A BUILDING FOUNDATION:
 • USE ASTM 1785 SCHEDULE 40 PVC PIPE WHERE COVER IS 12 INCHES OR GREATER.
 • USE ANSI CLASS 50 DUCTILE IRON PIPE WHERE COVER IS 8 INCHES OR GREATER.
 • USE ASTM 1785 SCHEDULE 40 PVC PIPE WHERE COVER IS 12 INCHES OR GREATER.
 • USE ANSI CLASS 50 DUCTILE IRON PIPE WHERE COVER IS 8 INCHES OR GREATER.
 WITHIN A BUILDING FOUNDATION:
 • USE ASTM 1785 SCHEDULE 40 PVC PIPE WHERE COVER IS 12 INCHES OR GREATER.
 • USE ANSI CLASS 50 DUCTILE IRON PIPE WHERE COVER IS 8 INCHES OR GREATER.
 • USE ASTM 1785 SCHEDULE 40 PVC PIPE WHERE COVER IS 12 INCHES OR GREATER.
 • USE ANSI CLASS 50 DUCTILE IRON PIPE WHERE COVER IS 8 INCHES OR GREATER.
- STORM DRAIN PIPE SIZE AND SLOPE
 • ALL STORM DRAIN PIPE SLOPES TO BE 0.01 FT/FT MINIMUM UNLESS NOTED OTHERWISE.
 • ALL STORM DRAIN SIZING PER OREGON DESIGN METHOD UNLESS PIPES MARKED WITH A SLOPE LESS THAN 0.01 FT/FT.
 • PIPE SLOPE INDICATED ARE APPROXIMATE MINIMUM SLOPES BASED ON THE STATED METERS. INSTALL PIPES ACCORDING TO INVERTS NOTED ON PLAN AND IN STRUCTURE SCHEDULE.
 • UNLESS NOTED OTHERWISE ALL FITTINGS ARE TO BE CONCENTRIC PIPE INVERT.
 • FITTINGS NOTED AT FITTINGS ARE CALCULATED FOR THE LARGEST DRAINER PIPE CONNECTED TO THAT FITTING. TEES TO BE SANITARY TEE OR WYE WITH 18" TO 20" BEND.
- CLEANOUTS ON STORM DRAIN PIPING TO BE SPACED MAXIMUM OF 100 FEET APART. CLEANOUTS ARE REQUIRED FOR EACH AGGREGATE HORIZONTAL CHANGE IN DIRECTION EXCEEDING 120 DEGREE TURN.
 • FOR 4" RISER PIPE, COVER ON SANITARY SEWER AND STORM DRAIN CLEANOUT TO BE TYPICALLY 18" TOTAL CAST IRON 90 VALVE BOX AND COVER AT SHALLOW PIPE DEPTH UP TO 10 FEET. DEPTH TO BE 18" ON CS-3.1. ALTERNATE CONCRETE BROOKS VALVE BOX IS ACCEPTABLE.
 • FOR 6" RISER PIPE, USE 6" RISER DIAMETER EXTENSION AND 10"x12" CONCRETE BODY WITH CAST IRON 90 VALVE BOX AND COVER. FOR SHALLOW PIPE DEPTH, USE 10"x12" CONCRETE BODY WITH CAST IRON RISER AND CAST IRON TRAFFIC COVER MODEL 3 RT AS MANUFACTURED BY BROOKS PRODUCTS, INC. OR APPROVED EQUAL.

KEYED SITE & CIVIL PLAN NOTES

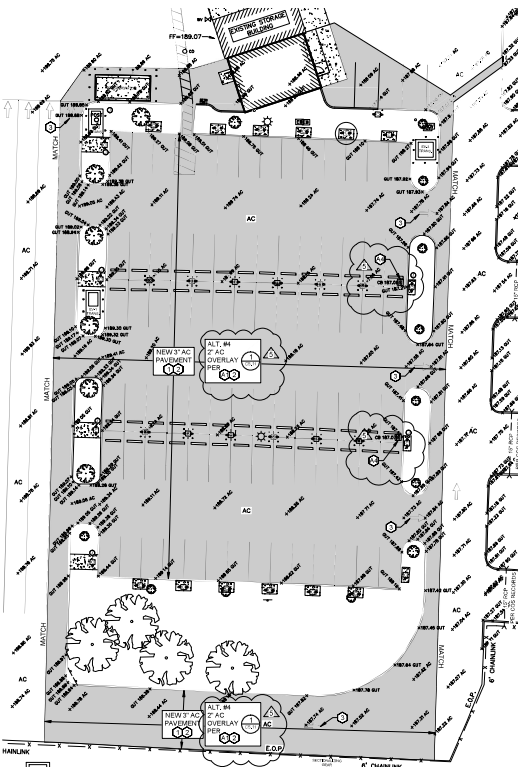
- GENERAL SITE PLAN NOTES SPECIFICALLY CALLED OUT ON PLAN ARE IN ADDITION TO ANY INCIDENTAL WORK NECESSARY TO PERFORM THE REQUIRED WORK. NOT ALL REQUIRED WORK MAY HAVE BEEN IDENTIFIED. SEE LANDSCAPE AND ELECTRICAL PLANS FOR ADDITIONAL SITE WORK REQUIREMENTS.
- NEW WHEELSTOP PER DETAIL 7 ON SHEET CS.51.
 - TAKE PRECAUTIONS TO PREVENT DAMAGE TO EXISTING CURB DURING BORING. REPLACE IF INSTALLING CURB BY OPEN TRENCH. AS REQUIRED CONSTRUCT WITH TYPE 'C' CONCRETE CURB PER DETAIL 11 ON CS.51 AS PART OF THE BASE CONTRACT.
 - ALIGNMENT OF NEW 2" CHARGER FEEDS SHOWN IN APPROXIMATE LOCATION. ADJUST AS REQUIRED BY ELECTRICAL PLANS AND UTILITY COMPANY REQUIREMENTS. BORING IS ALLOWED AT CONTRACTOR'S OPTION. TAKE PRECAUTIONS DURING BORING TO PREVENT DAMAGE TO EXISTING PAVEMENT. MULTIPLE CONDUITS MAY BE COMBINED IN TRENCHES AT CONTRACTOR'S DISCRETION.
 - ALIGNMENT OF NEW SECONDARY FEEDS TO NEW ELECTRIC BUILDING SHOWN IN APPROXIMATE LOCATION. ADJUST AS REQUIRED BY ELECTRICAL PLANS AND UTILITY COMPANY REQUIREMENTS. BORING IS ALLOWED AT CONTRACTOR'S OPTION. TAKE PRECAUTIONS DURING BORING TO PREVENT DAMAGE TO EXISTING PAVEMENT. MULTIPLE CONDUITS MAY BE COMBINED IN TRENCHES AT CONTRACTOR'S DISCRETION.
 - RESTORE LANDSCAPE SURFACES DISTURBED BY INSTALLATION OF CONDUIT AND CHARGER STATIONS. MATCH EXISTING MATERIAL AND THICKNESS. IN GRASS AREAS, REPLACE WITH SECT 900 SODS ON THE OR YEAR ACCORDING TO SPECIFICATIONS.
 - NEW TRANSFORMER SHALL BE SET BY THE CONTRACTOR TO PROVIDE AND INSTALL TRANSFORMER PAD OR VAULT 1 AND BARRIER POSTS ACCORDING TO POE CONSTRUCTION DRAWINGS. SEE ELECTRICAL PLANS FOR REQUIREMENTS. UNDER TRANSFORMER PAD OR VAULT, STRIP 6" MIN. TO REMOVE FULL ROCK ZONE AND ALL ORGANIC MATERIAL AND PLACE 6" MIN. 3/4" CRUSHED ROCK COMPACTED TO 95% SET TOP OF PAD ELEVATION AS REQUIRED BY POE. BACKFILL EDGES WITH 6" GRANULAR FILL TO 12" ABOVE FINISH GRADE. PLACE 6" GRANULAR FILL TO 12" ABOVE FINISH GRADE. BARRIER POSTS PER DETAIL 100.01 AS REQUIRED BY POE EBR 2002, AND ADDITIONAL 6" BARRIER POSTS AS SHOWN. ANTICIPATED NUMBER OF BARRIER POSTS IS INDICATED. WHERE UTILITY CLEARANCES CANNOT BE MAINTAINED DUE TO TRAFFIC OR OTHER CLEARANCE ISSUES, PROVIDE REMOVABLE BARRIER POSTS.
 - NEW METER BOD BY 2" BARRIER DISTRIBUTION BOX. SEE ELECTRICAL PLANS FOR INSTALLATION OF ELECTRICAL CLEAR. EMBED PANEL SUPPORT POSTS 36" MIN. DIA. CONCRETE. REINFORCEMENT PROVIDE BARRIERS 6" MIN. DIA. UNDER PANEL AND UNDER PAD. PLACE 6" MIN. 3/4" CRUSHED ROCK COMPACTED TO 95%. SET TOP OF PAVELATION TO 12" ABOVE FINISH GRADE. PLACE 6" GRANULAR FILL TO 12" ABOVE FINISH GRADE. BARRIER POSTS PER DETAIL 100.01 AS REQUIRED BY POE. AS SHOWN. ANTICIPATED INCREASED QUANTITY AS REQUIRED PER UNIT PRICE.
 - CONTRACTOR TO PROVIDE AND INSTALL PRIMARY AND SECONDARY SERVICE CONDUITS ACCORDING TO POE CONSTRUCTION DRAWINGS. VERIFY EXACT ALIGNMENT WITH POE ELECTRICAL PLANS AND FIELD CONDITIONS. ADJUST ACCORDINGLY. COORDINATE INSTALLATION SUCH THAT CONDUIT IS INSTALLED PRIOR TO REPLACEMENT OF NEW ROADWAY PAVEMENT.
 - CONTRACTOR TO PROVIDE AND INSTALL PRIMARY AND SECONDARY SERVICE CONDUITS ACCORDING TO POE CONSTRUCTION DRAWINGS. VERIFY EXACT ALIGNMENT WITH POE ELECTRICAL PLANS AND FIELD CONDITIONS. ADJUST ACCORDINGLY.
 - INSTALL 6" BOLLARDS PER DETAIL 120.01 IN FRONT OF GENERATOR AS SHOWN WITH SPACING AND CLEARANCES AS REQUIRED BY CODE. WHERE UTILITY CLEARANCES CANNOT BE MAINTAINED DUE TO TRAFFIC OR OTHER CLEARANCE ISSUES, PROVIDE REMOVABLE BARRIER POSTS. 12" BARRIER POSTS ARE ANTICIPATED. INCREASE OR DECREASE QUANTITY AS REQUIRED PER UNIT PRICE.
 - CONTRACTOR TO PROVIDE AND INSTALL ELECTRICAL BELLING DRUMS IN APPROXIMATE LOCATION. ADJUST AS REQUIRED BY ELECTRICAL PLANS AND UTILITY COMPANY REQUIREMENTS. BORING IS ALLOWED AT CONTRACTOR'S OPTION. TAKE PRECAUTIONS DURING BORING TO PREVENT DAMAGE TO EXISTING PAVEMENT.
 - INSTALL PUBLIC EV SIGNAGE ON NEW POST PER DETAILS 16, 16 AND 10 ON CS.51.
 - INSTALL STATE VEHICLE EV SIGNAGE ON NEW POST PER DETAILS 15, 16 AND 10 ON CS.51.
 - ALT. 1 BID #4 - REMOVE AND REPAIR OF EXISTING PAVEMENT WITH EXTENSIVE DAMAGED SAND/CLAY AT BOUNDARY OF DEMOLISHED AREA AS NEEDED TO FORM A CLEAN DEMARCATON. REMOVE WEDEGE OF EXISTING BASE AS NEEDED TO FORM BASE FOR INLAY AND TRANSITION TO OVERLAY. NEW PAVEMENT ALONG BUILDING VAULT TO MATCH EXISTING ELEVATION.
 - ALT. 1 BID #4 - RAISE EXISTING CATCHBASIN RIM TO MATCH SURFACE OF NEW 2" ASPHALT OVERLAY. PROVIDE PARABOLIC OR CAST STEEL RISER SUITABLE FOR THE TYPE OF CATCHBASIN AND ABLE TO REMAIN SECURELY IN PLACE AFTER PLACEMENT OF OVERLAY.
 - ALT. 1 BID #4 - AFTER INSTALLATION OF PAVEMENT OVERLAY, RESTRIPE PARKING STALLS AND STRIPED ZONE TO MATCH EXISTING INSTALL. USE 4" WHITE PAINT FOR STRIPED ZONE.
 - FIELD LOCATE EXISTING POE VAULT. INSTALL NEW CONDUIT INTO VAULT ACCORDING TO POE CONSTRUCTION DRAWINGS.
 - FIELD LOCATE EXISTING POE VAULT. INSTALL NEW CONDUIT INTO VAULT ACCORDING TO POE CONSTRUCTION DRAWINGS.
 - CONTRACTOR TO PROVIDE AND INSTALL PRIMARY SERVICE CONDUITS AND SWITCH VAULTS ACCORDING TO POE CONSTRUCTION DRAWINGS. VERIFY EXACT ALIGNMENT WITH POE DRAWINGS, ELECTRICAL PLANS AND FIELD CONDITIONS. ADJUST ACCORDINGLY.

KEYED SOUTH SITE PAVEMENT PLAN NOTES

- GENERAL SITE PLAN NOTES SPECIFICALLY CALLED OUT ON PLAN ARE IN ADDITION TO ANY INCIDENTAL WORK NECESSARY TO PERFORM THE REQUIRED WORK. NOT ALL REQUIRED WORK MAY HAVE BEEN IDENTIFIED.
- REMOVE EXCESS BASEROCK AS NEEDED TO ACCOMMODATE NEW 3" THICK ASPHALT PAVEMENT. AT COMPLETION OF FINISH INSTALLATION, FINISH GRAY AND COMPACT THROUGH BACKFILL TO ALLOW INSTALLATION OF 2" INLAY PATCH FLUSH WITH EXISTING PAVEMENT. AFTER PATCHING, INSTALL 2" AC OVERLAY ACROSS EXISTING SHADDED AREA. TRANSITION TO EXISTING PAVEMENT EDGES AT PERIMETER PER DETAIL 2 ON CS.11 OVER 5' MIN.
 - PAINT - WITHIN NEW PAVEMENT AND WHERE OTHERWISE INDICATED, REPAINT ALL STALLS, LANE LINES AND CROSSWALK HATCHING TO MATCH EXISTING SIZE AND LOCATION. ANY CURBS CURRENTLY PAINTED SHALL BE REPAINTED THE SAME COLOR AND FOR THE SAME EXTENTS.
 - PAINT - DIRECTIONAL ARROW - STRAIGHT 'SA' PER DETAIL 9 ON CS.51.
 - ALT. #4 KEYED SOUTH SITE PAVEMENT PLAN NOTES
- GENERAL SITE PLAN NOTES SPECIFICALLY CALLED OUT ON PLAN ARE IN ADDITION TO ANY INCIDENTAL WORK NECESSARY TO PERFORM THE REQUIRED WORK. NOT ALL REQUIRED WORK MAY HAVE BEEN IDENTIFIED.
- AT COMPLETION OF FINISH INSTALLATION, FINISH GRAY AND COMPACT THROUGH BACKFILL TO ALLOW INSTALLATION OF 2" INLAY PATCH FLUSH WITH EXISTING PAVEMENT. AFTER PATCHING, INSTALL 2" AC OVERLAY ACROSS EXISTING SHADDED AREA. TRANSITION TO EXISTING PAVEMENT EDGES AT PERIMETER PER DETAIL 2 ON CS.11 OVER 5' MIN.
 - PAINT - WITHIN NEW PAVEMENT AND WHERE OTHERWISE INDICATED, REPAINT ALL STALLS, LANE LINES AND CROSSWALK HATCHING TO MATCH EXISTING SIZE AND LOCATION. ANY CURBS CURRENTLY PAINTED SHALL BE REPAINTED THE SAME COLOR AND FOR THE SAME EXTENTS.
 - PAINT - DIRECTIONAL ARROW - STRAIGHT 'SA' PER DETAIL 9 ON CS.51.
 - RAISE EXISTING CATCHBASIN RIM TO MATCH SURFACE OF NEW 2" ASPHALT OVERLAY. PROVIDE PARABOLIC OR CAST STEEL RISER SUITABLE FOR THE TYPE OF CATCHBASIN AND ABLE TO REMAIN SECURELY IN PLACE AFTER PLACEMENT OF OVERLAY.



SOUTH SITE & CIVIL PLAN
 1" = 20'-0"
 PLAN TO SCALE (BY MEASURES 2)



SOUTH SITE PAVEMENT PLAN
 1" = 20'-0"
 PLAN TO SCALE (BY MEASURES 2)

CONFORMED SET - 04 OCT 2022

OREGON DEPT. OF ADMINISTRATIVE SERVICES
 PARKING LOT UPGRADE PROJECT
 SALEM MOTOR POOL EV CHARGERS & ELECTRICAL ROOM ADDITION
 1100 SE AIRPORT ROAD SE, SALEM, OREGON
SOUTH SITE & CIVIL PLAN

JOB NO. 20005-1
 DATE APRIL 4, 2022
 DESIGN BY GL
 CHECKED BY GL
 SHEET
C5.12

Locke CIVIL & STRUCTURAL ENGINEERS
 289 Dallas, Clatsop, OR 97138
 503.364.8207
 LockEngineers.com

Work performed by the contractor or subcontractor is not subject to the provisions of this contract. The contractor shall be responsible for any errors or omissions in the work. The contractor shall be responsible for any errors or omissions in the work. The contractor shall be responsible for any errors or omissions in the work.

REV.	DATE	DESCRIPTION
24	JUNE 2022	REVISION FOR PGE
22	JULY 2022	REVISIONS FOR ADDENDUM NO. 1 & ADDENDUM NO. 2



GENERAL UTILITY PLAN NOTES

- ALL CONSTRUCTION IN A PUBLIC RIGHT-OF-WAY OR EASEMENT SHALL BE IN ACCORDANCE WITH THE LOCAL JURISDICTION'S STANDARD CONSTRUCTION SPECIFICATIONS AND ANY SPECIAL PROVISIONS INCLUDED AS PART OF THE APPROVED PLANS.
- OREGON LAW REQUIRES YOU TO FOLLOW RULES ADOPTED BY THE OREGON UTILITY NOTIFICATION CENTER. THOSE RULES ARE SET FORTH IN OAR 92.001-010 THROUGH 92.001-010. YOU MAY OBTAIN COPIES OF THE RULES BY CALLING THE CENTER, THE TELEPHONE NUMBER FOR THE OREGON UTILITY NOTIFICATION CENTER IS 503-232-1987.
- SEE SITE PLANS FOR SITE DIMENSIONS, PARKING LAYOUTS, SIDEWALK WIDTHS, AND SIMILAR INFORMATION.
- VERIFY EXACT POSITIONS OF UTILITY SERVICE ENTRY POINTS WITH LANDSCAPE AND ELECTRICAL PLANS BY OTHERS.
- CONSTRUCT PRIVATE UTILITY TRENCH BEDDING AND BACKFILL PER DETAIL 1-1-1 (A-C) 1-1-1.
- STORM DRAIN PIPE MATERIAL:
 - INVERT OF A BUILDING FOUNDATION:
 - USE ASTM 1785 SCHEDULE 40 PVC PIPE WHERE COVER IS 12 INCHES OR GREATER.
 - USE ANSI CLASS 50 DUCTILE IRON PIPE WHERE COVER IS LESS THAN 12 INCHES.
 - BEYOND OF A BUILDING FOUNDATION:
 - USE ASTM 20030 SDR35 PVC PIPE WHERE COVER IS 24 INCHES OR GREATER.
 - USE ASTM 1785 SCHEDULE 40 PVC PIPE WHERE COVER IS 12 INCHES OR GREATER.
 - USE ANSI CLASS 50 DUCTILE IRON PIPE WHERE COVER IS LESS THAN 12 INCHES.
- STORM DRAIN PIPE SIZE AND SLOPE:
 - ALL STORM DRAIN PIPE SLOPES TO BE 3.01 FT MINIMUM UNLESS NOTED OTHERWISE.
 - ALL STORM DRAIN SIZING PER OREGON DESIGN METHOD UNLESS PIPE IS MARKED WITH A SLOPE LESS THAN 0.01 FT.
 - PIPE SLOPES INDICATED ARE APPROXIMATE MINIMUM SLOPES BASED ON THE STATED MATERIALS. INSTALL PIPES ACCORDING TO INVERTS NOTED ON PLAN AND IN STRUCTURE SCHEDULE.
 - UNLESS NOTED OTHERWISE ALL FITTINGS ARE TO BE CONCENTRIC PIPE INVERT ELEVATIONS NOTED AT FITTINGS ARE CALCULATED FOR THE LARGEST DIAMETER PIPE CONNECTED TO THAT FITTING. TESTS TO BE SANITARY TEST OR PIPE WITH 18" TBEND.
- CLEANOUTS ON STORM DRAIN PIPING TO BE SPACED MAXIMUM OF 100 FEET APART. CLEANOUTS ARE REQUIRED FOR EACH AGGREGATE HORIZONTAL CHANGE IN DIRECTION EXCEEDING 90 DEGREES (OSPC 107).
- FOR 4" RISER PIPE COVER OR SANITARY SEWER AND STORM DRAIN CLEANOUT TO BE TYPICALLY 18" TALL CAST IRON 90 VALVE BOX AND COVER. AT SHALLOW PIPE DEPTH 10" CAST IRON 90 VALVE BOX AND COVER IS ACCEPTABLE. INSTALL FLUSH WITH FINISHED GRADE. SEE DETAIL 9-04 OR CS-03. ALTERNATE CONCRETE BROOKS VALVE BOX IS ACCEPTABLE.
 - FOR 6" RISER PIPE USE 6" INSIDE DIAMETER EXTENSION AND 10"x12" CONCRETE BODY WITH CAST IRON RING AND CAST IRON TRAFFIC COVER. 3/4" AS MANUFACTURED BY BROOKS PRODUCTS, INC. OR APPROVED EQUAL. FOR SHALLOW PIPE DEPTH USE 10"x12" CONCRETE BODY WITH CAST IRON TRAFFIC COVER, MODEL 3/4" AS MANUFACTURED BY BROOKS PRODUCTS, INC. OR APPROVED EQUAL.

KEYED SITE & CIVIL PLAN NOTES:

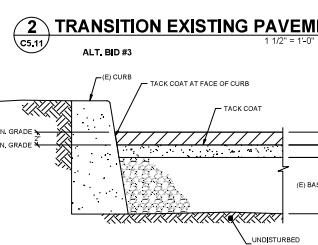
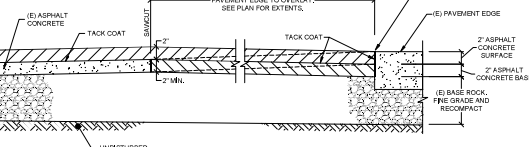
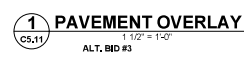
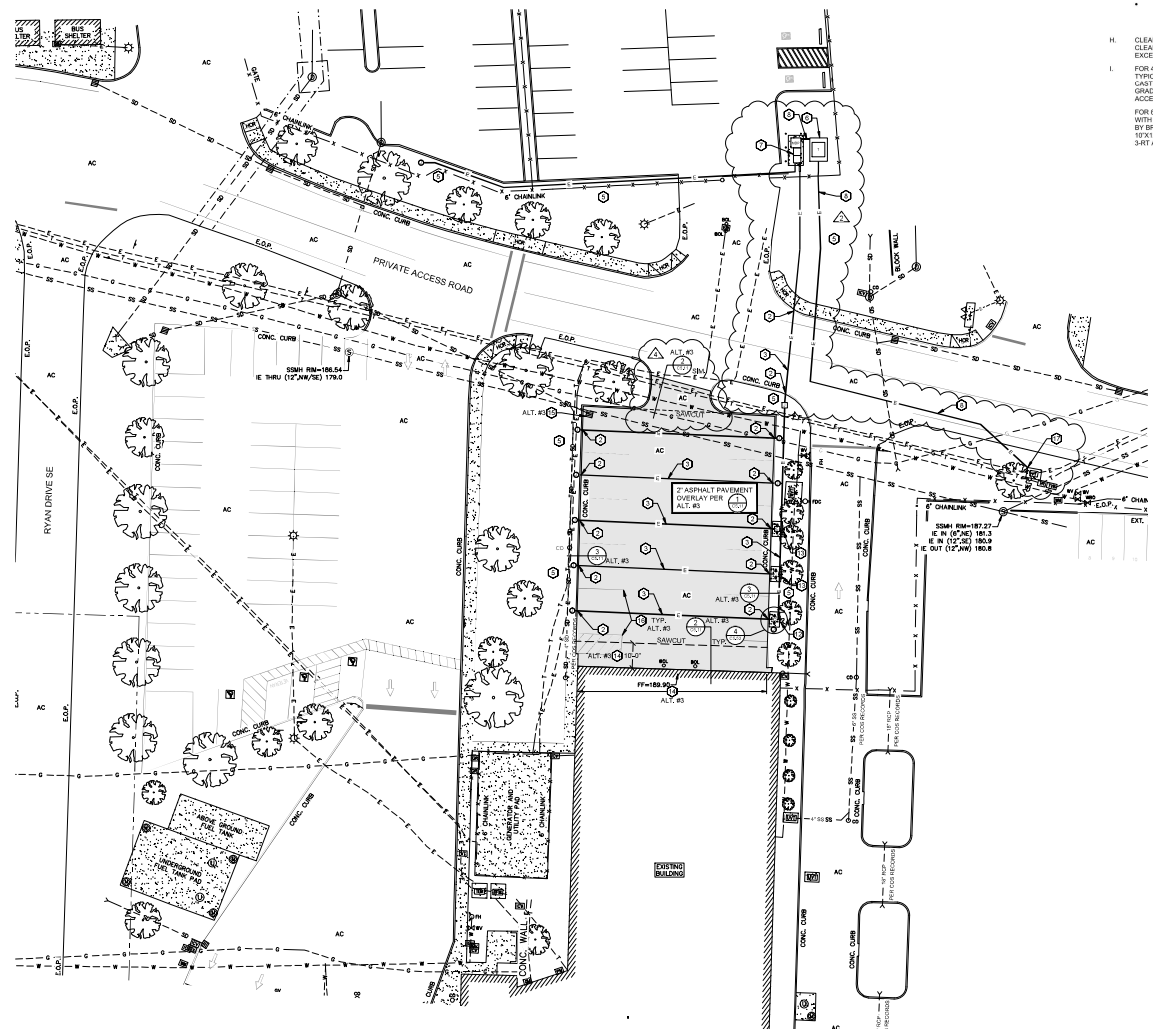
- NEW WHELPOST PER DETAIL 7-08 ONSET CS-51.
- TAKE PRECAUTIONS TO PREVENT DAMAGE TO EXISTING CURB DURING BORING. REPLACE IF INSTALLING CONDUITS BY OPEN TRENCH. AS REQUIRED, RECONSTRUCT WITH TYPE "C" CONCRETE CURB PER DETAIL 1-1 ON CS-51 AS PART OF THE BASE COURSE.
- ALIGNMENT OF NEW 1/2" CHARGER FEEDS SHOWN IN APPROXIMATE LOCATION. ADJUST AS REQUIRED BY ELECTRICAL PLANS AND CHARGER MANUFACTURER. BORING IS ALLOWED AT CONTRACTOR'S OPTION. TAKE PRECAUTIONS DURING BORING TO PREVENT DAMAGE TO EXISTING PAVEMENT. MULTIPLE CONDUITS MAY BE COMBINED IN TRENCHES AT CONTRACTOR'S DISCRETION.
- ALIGNMENT OF NEW SECONDARY FEEDS TO NEW ELECTRIC BUILDING SHOWN IN APPROXIMATE LOCATION. ADJUST AS REQUIRED BY ELECTRICAL PLANS AND UTILITY COMPANY REQUIREMENTS. BORING IS ALLOWED AT CONTRACTOR'S OPTION. TAKE PRECAUTIONS DURING BORING TO PREVENT DAMAGE TO EXISTING PAVEMENT.
- RESTORE LANDSCAPE SURFACES DISTURBED BY INSTALLATION OF CONDUIT AND CHARGER STATIONS. MATCH EXISTING MATERIAL AND THICKNESS. IN GRASS AREAS, REPAIR WITH SEED OR SOIL REPAIRING ON 10% YEAR ACCORDING TO SPECIFICATIONS.
- NEW TRANSFORMER INSTALLED BY PGE. CONTRACTOR TO PROVIDE AND INSTALL TRANSFORMER PAD (OR WALL 1) AND BARRIER POSTS ACCORDING TO PGE CONSTRUCTION DRAWINGS. SEE ELECTRICAL PLANS FOR ADDITIONAL REQUIREMENTS. UNDER PAVEMENT: PROVIDE MINIMUM 6" DUCTILE IRON CONCRETE UNDER PANEL UNDERPAD, STRIP 4" MIN. TO REMOVE FULL ROOT ZONE AND ALL ORGANIC MATERIAL, AND 4" MIN. OF 3/4" SAND. SET TOP OF PAD ELEVATION AS REQUIRED BY PGE. BACKFILL EDGES WITH TOPSOIL AND PLACE SAND OR SEED ACCORDING TO PLANS & SPECIFICATIONS. PROVIDE 6" BARRIER POSTS PER DETAIL 1-10 CS-51 AS REQUIRED BY PGE ESR 202. AND ADDITIONAL 6" BARRIER POSTS AS SHOWN. ATTACHED NUMBER OF BARRIER POSTS IS NOTED. WHERE UTILITY CLEARANCES CANNOT BE MAINTAINED DUE TO TRAFFIC OR OTHER CLEARANCE REQUIREMENTS, PROVIDE 6" BARRIER POSTS.
- NEW 1/2" CHARGER DISTRIBUTION PANEL. SEE ELECTRICAL PLANS FOR INSTALLATION OF ELECTRICAL GEAR. EMBED PANEL SUPPORT POSTS IN 10" DIA. CONCRETE ENCASUREMENT. PROVIDE MINIMUM 6" DUCTILE IRON CONCRETE UNDER PANEL UNDERPAD, STRIP 4" MIN. TO REMOVE FULL ROOT ZONE AND ALL ORGANIC MATERIAL, AND 4" MIN. OF 3/4" SAND. SET TOP OF PAD ELEVATION AS REQUIRED BY PGE. BACKFILL EDGES WITH TOPSOIL AND PLACE SAND OR SEED ACCORDING TO PLANS & SPECIFICATIONS. PROVIDE 6" BARRIER POSTS PER DETAIL 1-10 CS-51 AS REQUIRED BY PGE ESR 202. AND ADDITIONAL 6" BARRIER POSTS AS SHOWN. ATTACHED NUMBER OF BARRIER POSTS IS NOTED. WHERE UTILITY CLEARANCES CANNOT BE MAINTAINED DUE TO TRAFFIC OR OTHER CLEARANCE REQUIREMENTS, PROVIDE 6" BARRIER POSTS.
- CONTRACTOR TO PROVIDE AND INSTALL PRIMARY AND SECONDARY SERVICE CONDUITS ACCORDING TO PGE CONSTRUCTION DRAWINGS. VERIFY EXACT ALIGNMENT WITH PGE ELECTRICAL PLANS AND FIELD CONDITIONS. ADJUST ACCORDINGLY. COORDINATE INSTALLATION WITH PGE THAT CONDUITS IS INSTALLED PRIOR TO REPLACEMENT OF NEW ROADWAY PAVEMENT.
- CONTRACTOR TO PROVIDE AND INSTALL PRIMARY AND SECONDARY SERVICE CONDUITS ACCORDING TO PGE CONSTRUCTION DRAWINGS. VERIFY EXACT ALIGNMENT WITH PGE ELECTRICAL PLANS AND FIELD CONDITIONS. ADJUST ACCORDINGLY.
- INSTALL 6" SCHEDULE 40 PER DETAIL 1-10 CS-51 IN FRONT OF EXISTING AND AS SHOWN WITH SPACING AND CLEARANCES AS REQUIRED BY CODE. WHERE UTILITY CLEARANCES CANNOT BE MAINTAINED DUE TO TRAFFIC OR OTHER CLEARANCE ISSUES, PROVIDE REMOVABLE BARRIER POSTS. TO BARRIER POSTS ARE ANTICIPATED, INCREASE OR DECREASE QUANTITY AS REQUIRED PER USE PER PGE.
- ALIGNMENT OF FUTURE SOLAR ARRAY CONDUIT TO NEW ELECTRIC BUILDING SHOWN IN APPROXIMATE LOCATION. ADJUST AS REQUIRED BY ELECTRICAL PLANS AND UTILITY COMPANY REQUIREMENTS. BORING IS ALLOWED AT CONTRACTOR'S OPTION. TAKE PRECAUTIONS DURING BORING TO PREVENT DAMAGE TO EXISTING PAVEMENT.
- INSTALL PUBLIC VEY SIGNAGE ON NEW POST PER DETAILS 14, 16 AND 10 ON CS-51.
- ALT. BID #1 - REMOVE AND DISPOSE OF EXISTING PAVEMENT WITH EXTENTS INDICATED. SAWCUT PER PERIMETER OF REMOVED AREA AS NEEDED TO FORM A CLEAN EDGE FOR RELAY AND TRANSFER TO OVERLAY. NEW PAVEMENT ALONG BUILDING WALL TO MATCH EXISTING ELEVATION.
- ALT. BID #3 - REUSE EXISTING CATCHBASIN RIM TO MATCH SURFACE OF NEW 2" ASPHALT OVERLAY. PROVIDE FABRICATED OR CAST STEEL RISER SUITABLE FOR THE TYPE OF CATCHBASIN AND ABLE TO REMAIN SECURELY IN PLACE AFTER PLACEMENT OF OVERLAY.
- ALT. BID #3 - AFTER INSTALLATION OF PAVEMENT OVERLAY, RESTRIPE PARKING STALLS AND SIGNAGE TO MATCH EXISTING LAYOUT. USE 4" WHITE PAINT PER PGE CONSTRUCTION DRAWINGS.
- FIELD LOCATE EXISTING PSE VAULT. INSTALL NEW CONDUIT INTO VAULT ACCORDING TO PGE CONSTRUCTION DRAWINGS.
- FIELD LOCATE EXISTING PSE VAULT. INSTALL NEW CONDUIT INTO VAULT ACCORDING TO PGE CONSTRUCTION DRAWINGS.

Notes attached to this plan are to be read in conjunction with the project only and on the property of the engineer. Subcontractors are to be held responsible for the proper construction of any other project. The engineer is not responsible for the accuracy of any other project. The engineer is not responsible for the accuracy of any other project. The engineer is not responsible for the accuracy of any other project.

Locke ENGINEERS
 CIVIL & STRUCTURAL
 289 Dallas, Oregon 97238
 503.364.9207
 LockeEngineers.com

CONFIRMED SET - 04 OCT 2022
 OREGON DEPT. OF ADMINISTRATIVE SERVICES
 PARKING LOT UPGRADE PROJECT
 SALEM MOTOR POOL EV CHARGERS
 1100 SE AIRPORT ROAD SE, SALEM OREGON
 NORTH SITE & CIVIL PLAN

JOB NO. 20005-1
 DATE APRIL 4, 2022
 DESIGN BY GL
 CHECKED BY GL
 SHEET
C5.11



NORTH SITE & CIVIL PLAN
 1" = 20'-0"
 PLAN TO SCALE (IF DIMENSIONS 2")