



1

---

---

---

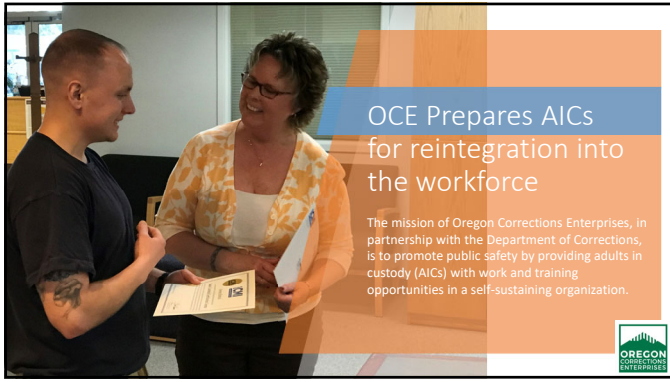
---

---

---

---

---



2

---

---

---

---

---

---

---

---



3

---

---

---

---

---

---

---

---

### DAS Procurement Manual

## What is the sequence of priority for procurement?

**Buy Decision priority**

In the available range?	Description
<b>1. Surplus Property</b>	Surplus provides a certain hierarchy to the selection, realization, and public sale of excess and surplus property and notices for all state agencies and public entities. An agency must look to use if the products are available through surplus before going out to the open market. Refer to the full surplus sale notice process for more information.
<b>2. Qualified Rehabilitation Facility (QRF)</b>	A Qualified Rehabilitation Facility (QRF) is a nonprofit organization registered exclusively with disabilities. QRFs provide services such as residential services, recycling services, food and emergency services, temporary lodging services etc. An agency must assess the availability of products or services from a QRF before going out to the open market. Refer to the full section on Certified Rehabilitation Facility Program for more information.
<b>3. Immediate labor</b>	Oregon Corrections Enterprises (OCE) provides full time work or on-call/night hiring to inmates. OCE provides products and services such as furniture, office setting, signs, park equipment, printing services, cut services, and laundry services. An agency must consider products or services from OCE before going out to the open market. Refer to the full section on inmate labor for more information.
<b>4. DAS Statewide Price Agreements</b>	An agency is required to purchase products and services from DAS Statewide Price Agreements when other steps in the Buy Decision do not yield results. An agency may purchase products or services from a price agreement, and may conduct a competitive process under a state price agreement. State commodity user products and services are found on the price agreement. Refer to the full section on DAS Statewide Price Agreements for more information.
<b>5. Open market</b>	If steps 1-4 of the Buy Decision do not yield results, an agency may choose to purchase products and services through the open market. Open market methods are described below.

**Buy Decision Priority Checklist (OAR125-247-0200(1)(2))**

Refer to OAR 125-247-0200 for complete Buy Decision requirements, or visit the Oregon Procurement Manual (<https://opm.oregon.gov>) for guidance. Use this checklist to document the agency decision and justification in the procurement file.

Priority order	Reason for not selecting
1. Surplus Property	
2. Qualified Rehabilitation Facility Program (QRF)	
3. Inmate labor	
4. DAS Statewide Price Agreements	
5. Open market	

**OCE 555 Agreement**  
NAU/OSA may be used if any part of any items.

**OCE 246-005**  
If steps 1-4 of the Buy Decision do not yield results, proceed to step 5.

**OCE 246-005**  
If steps 1-4 of the Buy Decision do not yield results, proceed to step 5.

**OCE 246-005**  
If steps 1-4 of the Buy Decision do not yield results, proceed to step 5.

<https://www.oregon.gov/das/OPM/Pages/method.aspx>

4

---

---

---

---

---

---

---

---

---

---

---

---

## Career Development Programs

### TAKE A STANCE ON SECOND CHANCE

*In 2022 OCE partnered with PREHP, developing a direct pathway from our shops to a job in our community.*

5

---

---

---

---

---

---

---

---

---

---

---

---

## In Their Own Words

6

---

---

---

---

---

---

---

---

---

---

---

---

### Encouraging Participation in Rehabilitative Work & Training Opportunities

1. Approximately 95% of current incarcerated men and women will eventually parole
2. OCE offers viable job skills in living-wage fields to assist in the transition back into the community and workforce.
3. Recidivism Rates
  - Adults in Custody are 50% less likely to reoffend if enrolled in OCE programs (for at least 180 days) compared to DOC overall.
4. DOC Staff wellbeing
  - Adults in custody are 50% less likely to commit an infraction while incarcerated if enrolled in OCE programs.
5. The most recent Criminal Justice Commission Benefit-Cost Analysis showed an avoided recidivism cost of \$5.20 for every dollar spent with OCE, with a 100% return on investment as OCE does not receive general fund allocation.



7

---

---

---

---

---

---

---


---


---

---

### By the numbers

- Contributions each year
  - OCE participants work over 1.9 million hours, reducing misconduct and positively impacting DOC
  - OCE contributes over \$2.8 million back to DOC annually for AIC awards
  - OCE spends over \$3 million on raw materials with an emphasis on local suppliers first
  - OCE contributes over \$23.4 million back into Oregon's economy
- 2018 ECONorthwest economic analysis of OCE concludes that
  - "For every million dollars produced by OCE, \$690,800 is re-spent along the supply chains in the state, compared to \$346,500 for private sector counterparts in the competitive scenario."
  - "OCE production results in higher private sector employment (up to \$1 jobs)."



OCE Annual Report  
 <https://www.oce.oregon.gov/kpi/>

8

---

---

---

---

---

---

---

---

---

---

### Through the Development of Standard and Custom Products and Services

<b>Furniture</b> Offices Hotels / Hospitality Reception Counters Classrooms Conference Rooms Dormitory Furnishings	<b>Metal Fabrication</b> CNC Plasma Cutting Refurbishing Lockers Trailers, Transportation Equipment Waste Management Park Gates & Bollards	<b>Transportation Equipment</b> Road Sanders Deckers Dump Beds / Installation Refurbishing Trailers Retrofitting / Upgrading
<b>Seating/Upholstery</b> Office Seating Benches Waiting Areas Lounges Restaurant Booths	<b>Park Equipment</b> Cabins & Furnishings Gazebos / Kiosks Ash Disposal Fire Pits Picnic Tables Garbage/Recycling Centers	<b>Embroidery/Textiles</b> Embroidered Patches Uniforms Police / Fire / Rangers Casino Staff Maintenance Crews Schools
<b>Printing &amp; Design</b> Graphic Design Digital Copying Traditional Printing Business Cards Multi-color Publications Mailing Services	<b>Signage</b> Indoor / ADA Signage Road Signs Digital Prints Banners Plaques & Awards	<b>Laundry</b> Hospital Clinic Institutional Schools Treatment Facilities <b>&amp; More!</b>

*These products and services provide job training opportunities for incarcerated men and women*

9

---

---

---

---

---

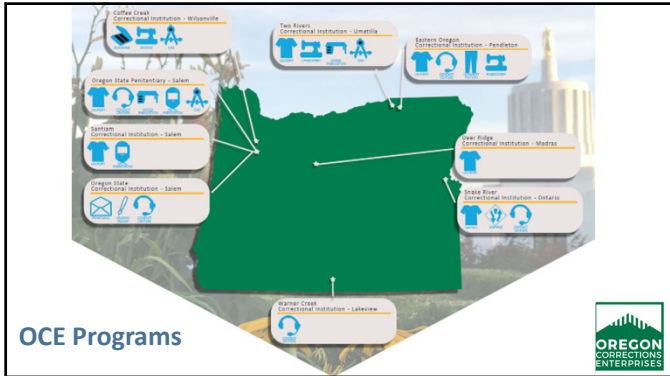
---

---

---

---

---



10

---

---

---

---

---

---

---

---

---

---



11

---

---

---

---

---

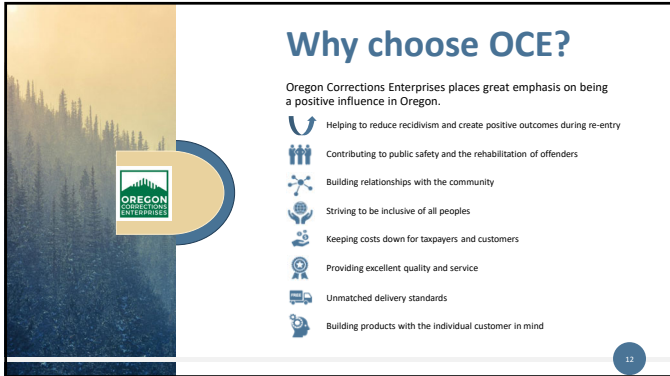
---

---

---

---

---



12

---

---

---

---

---

---

---

---

---

---



13

---

---

---

---

---

---

---