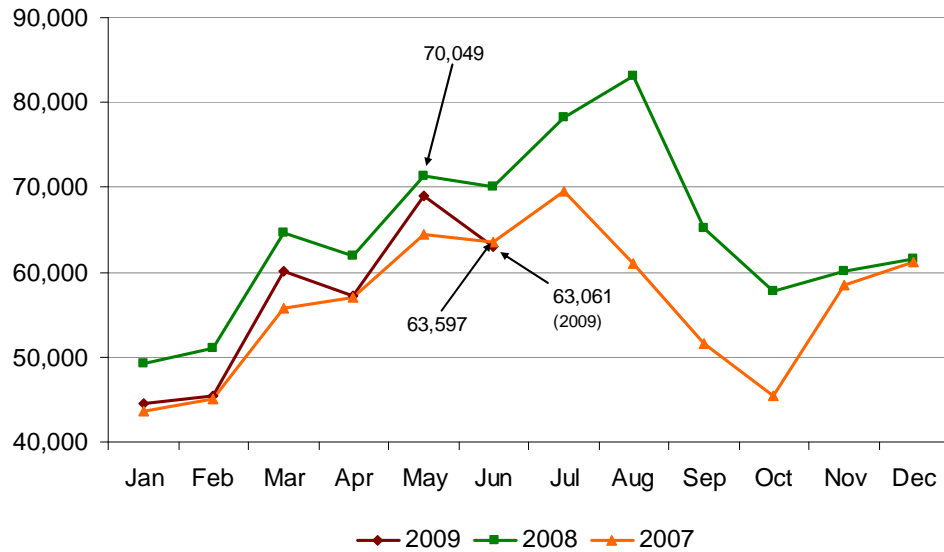




Amtrak Cascades Monthly Ridership Report – June 2009

Ridership

Passengers



Train #	Train Route	Percent of Change	
		2008 to 2009	2007 to 2009
500	Eugene to Seattle	-6.1	0.2
501	Seattle to Portland	-10.9	12.5
504	Eugene to Portland	-48.5	-43.9
506	Portland to Seattle	-3.1	2.9
507	Seattle to Eugene	-10.3	1.5
508	Portland to Seattle	-19.7	-14.4
509	Seattle to Eugene	-8.1	6.4
510	Seattle to Vancouver, BC	1.5	-1.0
513	Bellingham to Portland	-6.0	7.9
516	Portland to Bellingham	-10.4	-1.2
517	Vancouver, BC to Seattle	-6.4	-5.6

- Overall ridership decreased 10 percent from 2008, and 0.8 percent from 2007.
- Amtrak Superliner equipment is being used for trains **510** and **517** and is operating with its original schedule.

- WSDOT and Amtrak began a new Amtrak *Cascades* connecting bus service on May 12, 2008. June ridership for this new bus service was 1,432. This was a 17.6 percent increase over June 2008.

Types of Delays	# of Incidents
Equipment Failures	6
Collisions (vehicles/pedestrians)	2
Track Work 6/4 to 6/19	16
Track Work 6/22 & 6/29	2

Monthly Ridership per Funding Agency

Amtrak *Cascades* operations are funded by the states of Washington and Oregon and Amtrak. This table provides a breakdown per funding agency.

Agency	2009	2008	2007
Washington Funded Trains	43,811	47,124	38,539
Oregon Funded Trains*	7,571	10,332	8,933
Amtrak Funded Trains**	11,679	11,464	9,698
Route Totals	63,061	68,920	57,170

* Represents trains **500** and **504** (EUG-PDX), and **507** and **509** (PDX-EUG).

** Represents trains **500** (PDX-SEA) and **509** (SEA-PDX).

Year-to-Date (YTD) Summary

YTD	Ridership	Passenger Miles	Ave. Trip Length (miles)
2009	339,263	51,904,448	153.0
2008	368,363	56,494,026	153.4
2007	329,335	50,427,772	153.1

Average trip length was comparable to 2008 and 2007.