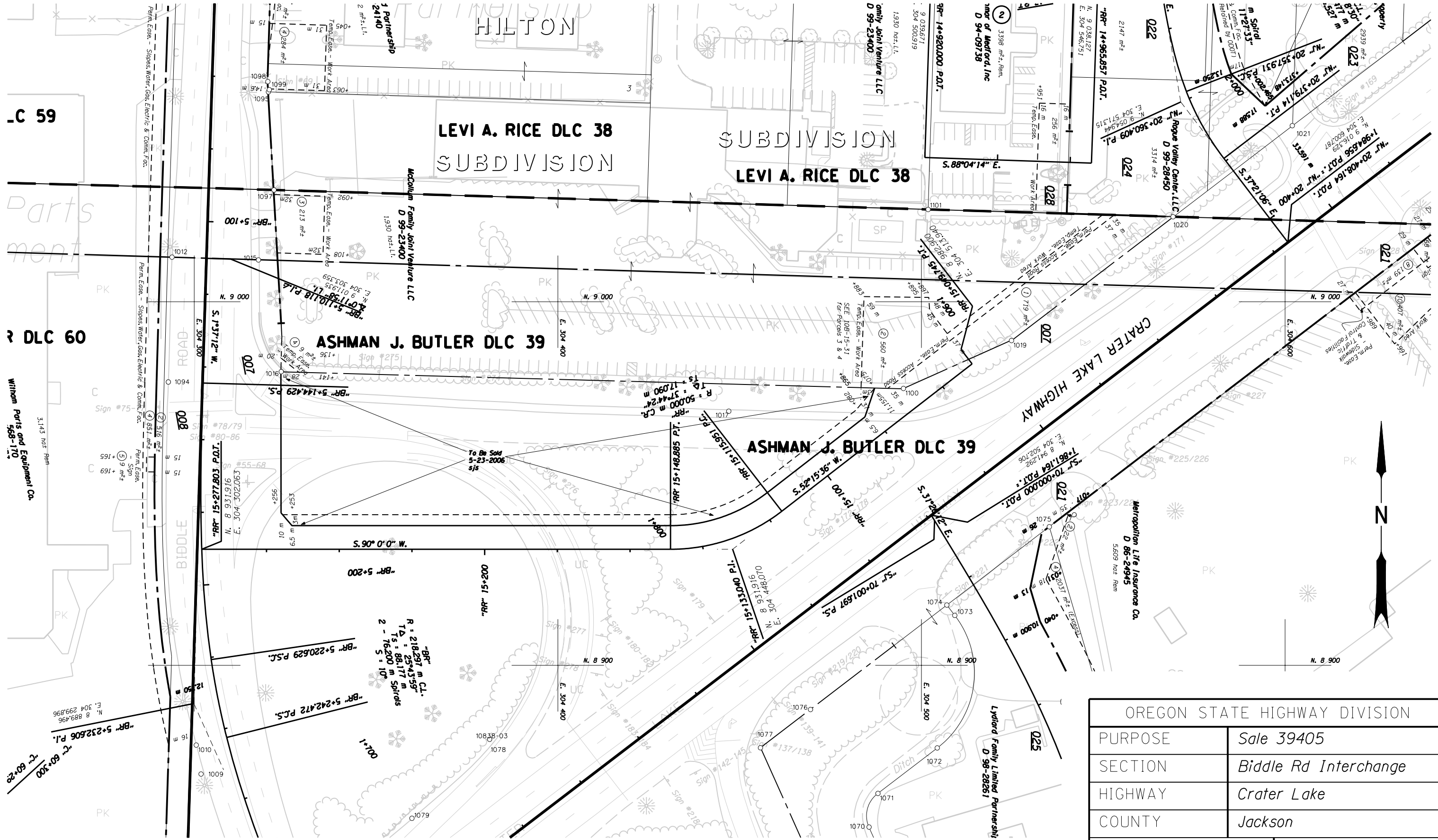


Sec. 18, T. 37 S., R. 1 W., W.M.

SKETCH MAP



OREGON STATE HIGHWAY DIVISION	
PURPOSE	Sale 39405
SECTION	Biddle Rd Interchange
HIGHWAY	Crater Lake
COUNTY	Jackson
SCALE:	1:1000
DATE:	May 2006

SEE 10B-15-31