

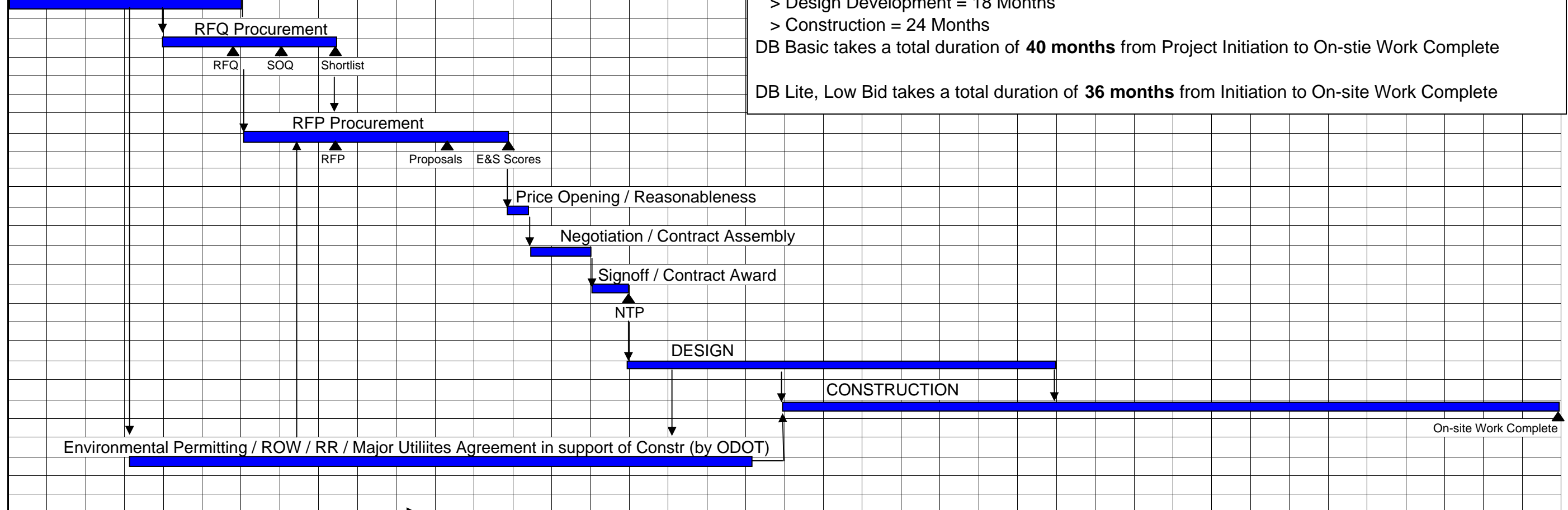
# COMPARISON OF SCHEDULES ON SIMILAR PROJECTS

Months from Project Initiation

1	2	3	4	5	6	7	8	9	10	11	12	13	14	15	16	17	18	19	20	21	22	23	24	25	26	27	28	29	30	31	32	33	34	35	36	37	38	39	40
---	---	---	---	---	---	---	---	---	----	----	----	----	----	----	----	----	----	----	----	----	----	----	----	----	----	----	----	----	----	----	----	----	----	----	----	----	----	----	----

## DB Basic (Best Value)

Project Development / Design to Concept



### Comparison with DBB delivery:

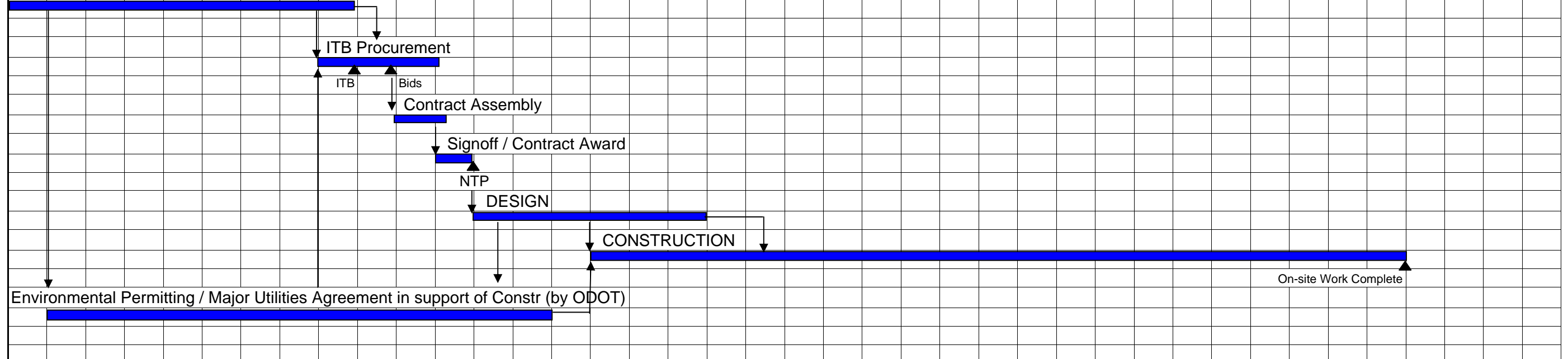
- DBB takes total duration of **54 months** from Project Initiation to On-site Work Complete
- > Project Development = 12 Months
- > Design Development = 18 Months
- > Construction = 24 Months

DB Basic takes a total duration of **40 months** from Project Initiation to On-site Work Complete

DB Lite, Low Bid takes a total duration of **36 months** from Initiation to On-site Work Complete

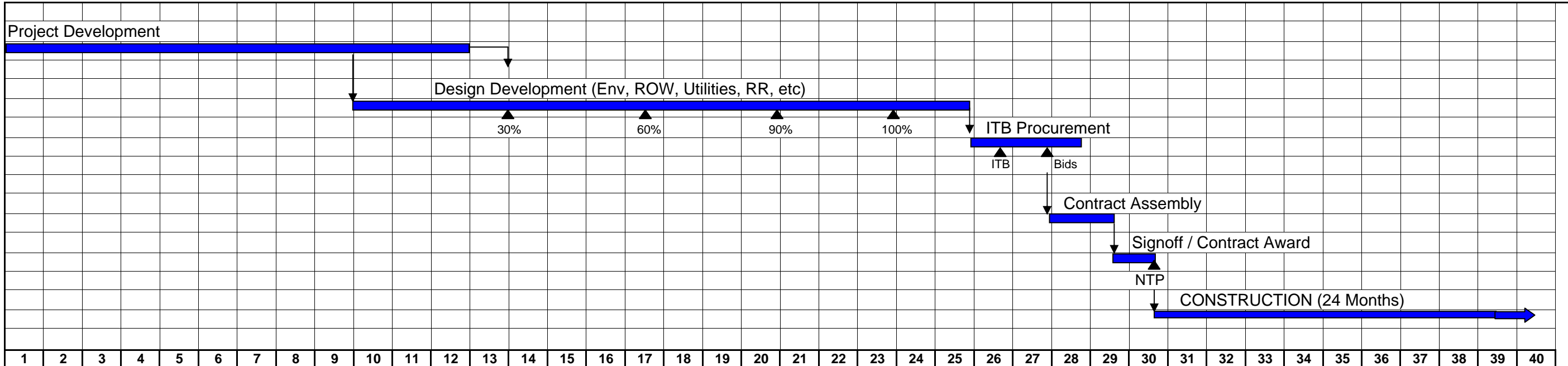
## DB Low Bid

Project Development / Design to Preliminary (DAP)



## Design-Bid-Build (DBB)

# COMPARISON OF SCHEDULES ON SIMILAR PROJECTS



Note: Projects that are under development or have completed DAP (Preliminary Design) would fall onto the timelines above at that point, giving you a more accurate project duration.  
 STIP-projects that have already been brought to DAP are best suited for DB Lite, Low Bid... unless complexity (extent of interfaces and project components) dictates otherwise (refer to "Decision Matrix for DB Delivery")