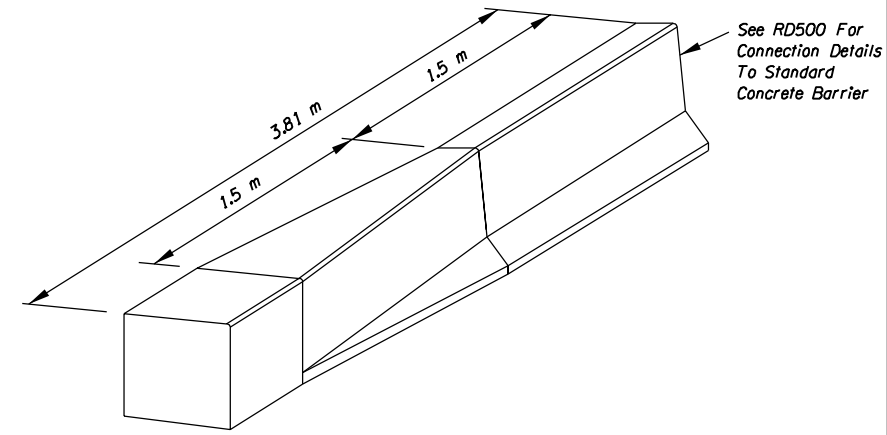
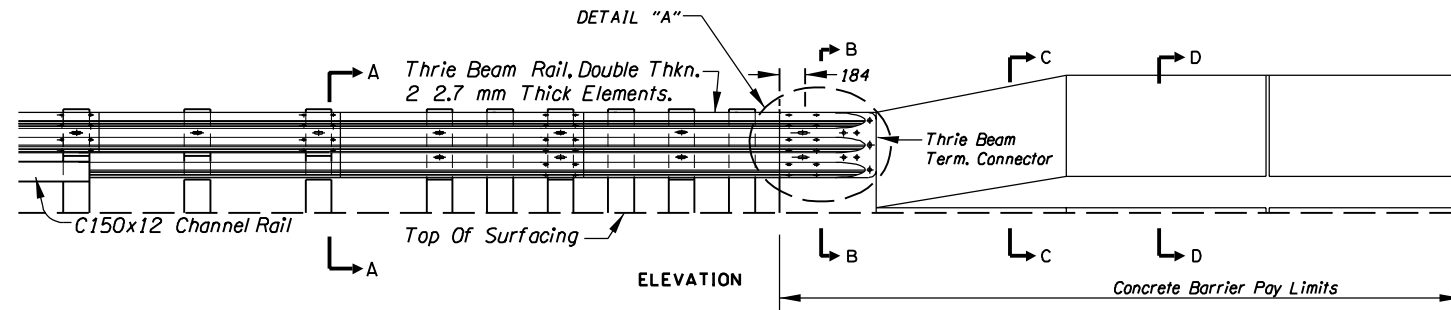
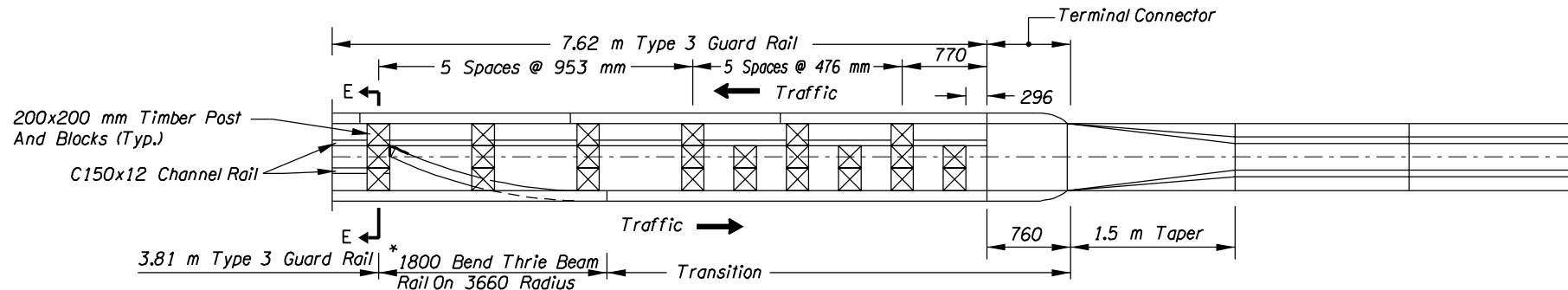


METAL MEDIAN BARRIER CONNECTION TO TALL CONCRETE BARRIER

"All Dimensions Are In mm's Unless Otherwise Noted."



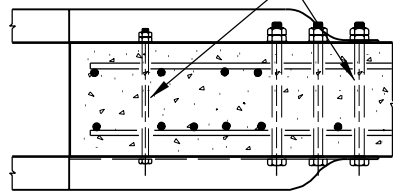
TRANSITION SECTION
CAST-IN-PLACE
TRANSITION SECTION
 (See RD530 For Reinforcement Requirements)



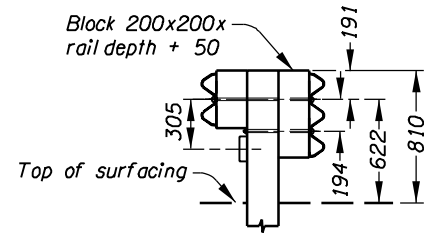
* As An Option, Use A Single 3.4 mm Thick Asymmetrical Transition Element, See RD410

PLAN

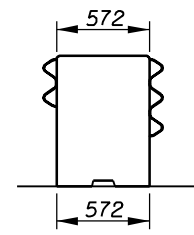
Drill Horizontal Bolt Holes (Bolt Dia. + 3 mm) In Hardened Concrete With Non-impact Rotary Drill.



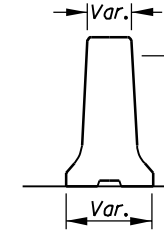
SECTION G-G



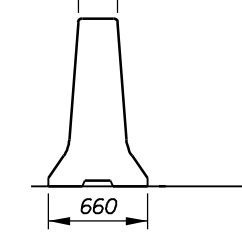
SECTION A-A



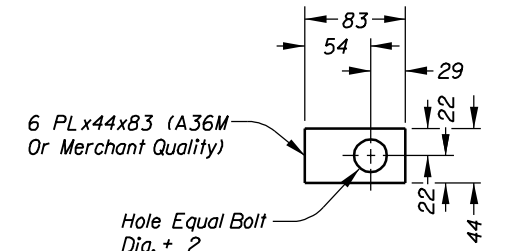
SECTION B-B



SECTION C-C



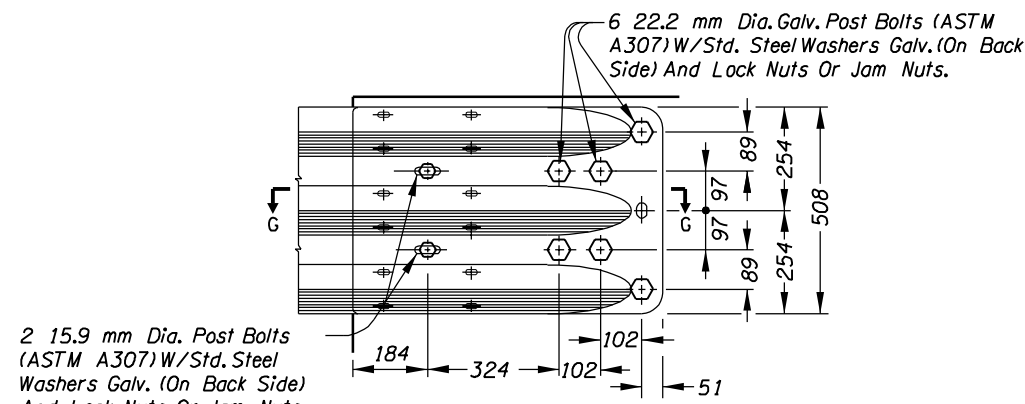
SECTION D-D



Hole Equal Bolt Dia. + 2

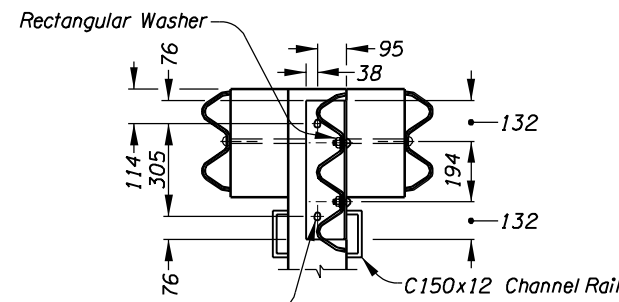
Note: Position Washer To Completely Cover Slotted Hole.

PLATE WASHER - "A"

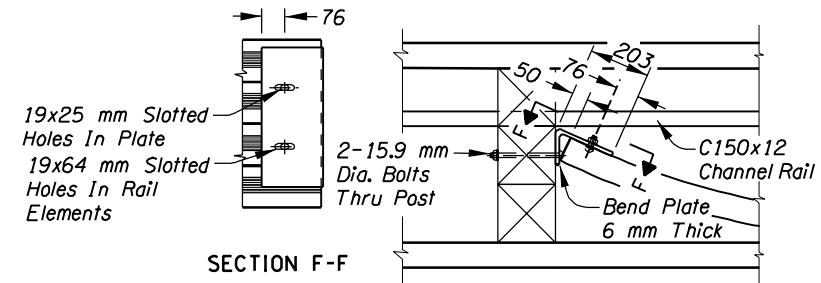


2 15.9 mm Dia. Post Bolts (ASTM A307) W/Std. Steel Washers Galv. (On Back Side) And Lock Nuts Or Jam Nuts.

DETAIL "A"



SECTION E-E



SECTION F-F

THRIE BEAM END DETAIL

1. For Metal Median Barrier Details See RD400.

OREGON DEPARTMENT OF TRANSPORTATION

SHEET NO.

ne7360ab/usr/mdet/detail135.dgn 6-23-03

DET 135