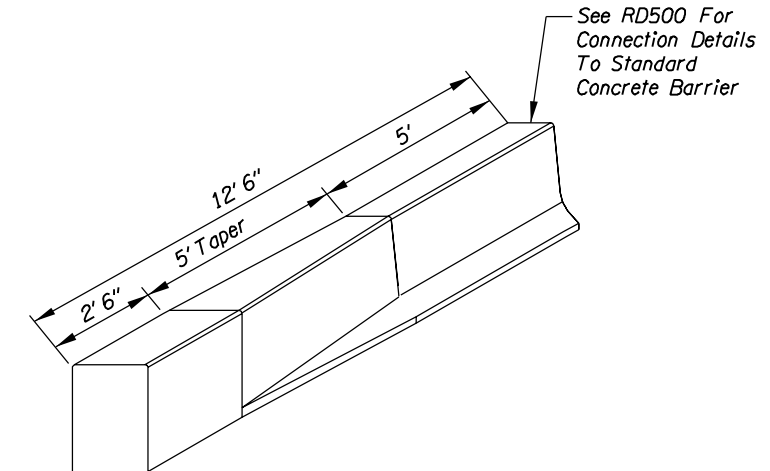
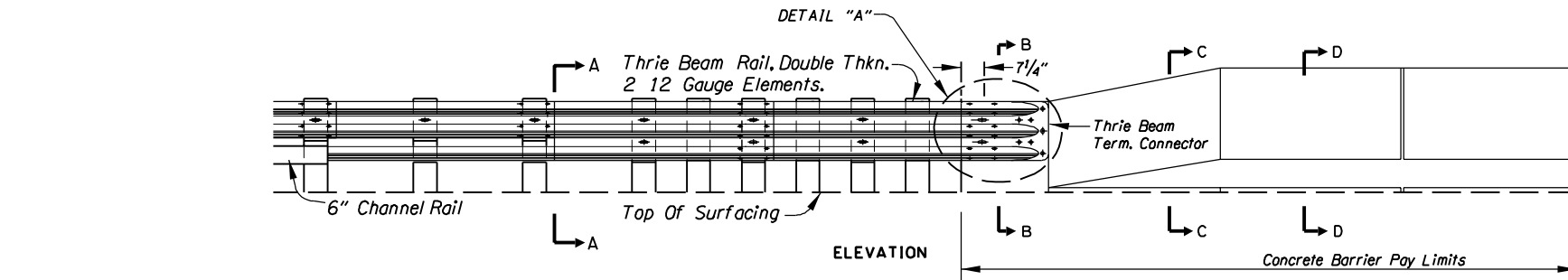
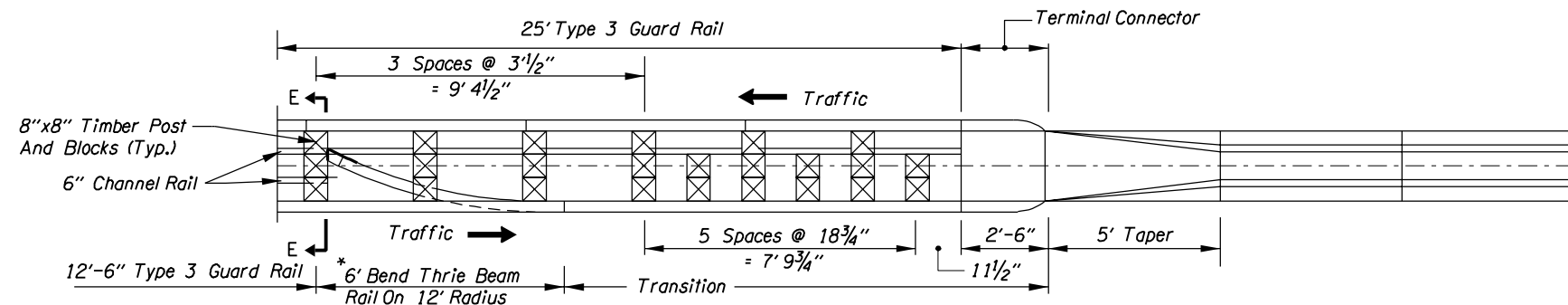


# METAL MEDIAN BARRIER CONNECTION TO TALL CONCRETE BARRIER

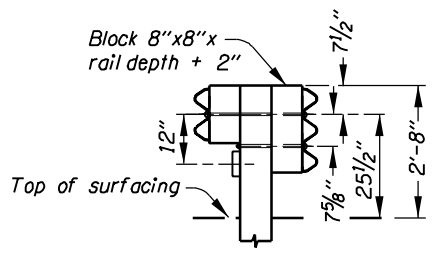
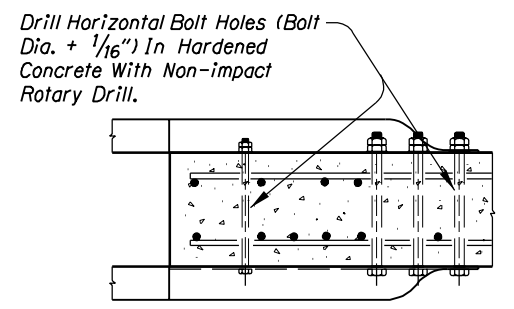


**TRANSITION SECTION  
CAST-IN-PLACE  
TRANSITION SECTION**  
(See RD530 For Reinforcement Requirements)

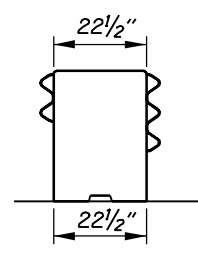


\* As An Option, Use A Single 10 Gauge Asymmetrical Transition Element, See RD410

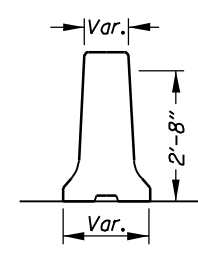
**PLAN**



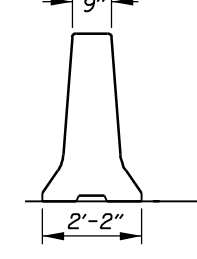
**SECTION A-A**



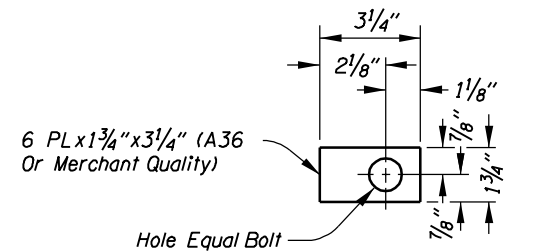
**SECTION B-B**



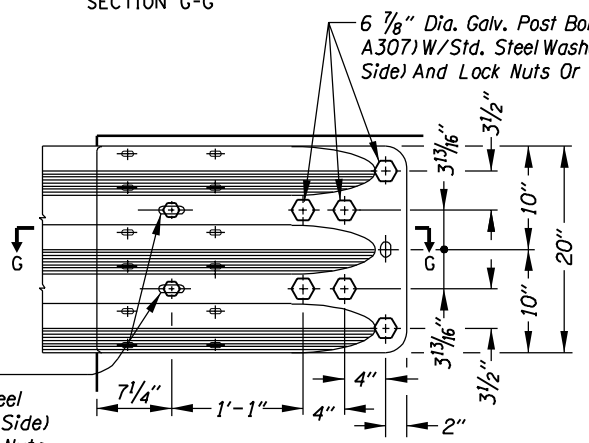
**SECTION C-C**



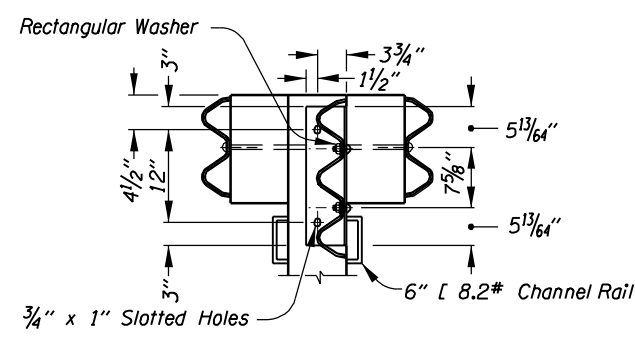
**SECTION D-D**



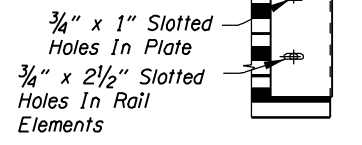
**PLATE WASHER - "A"**



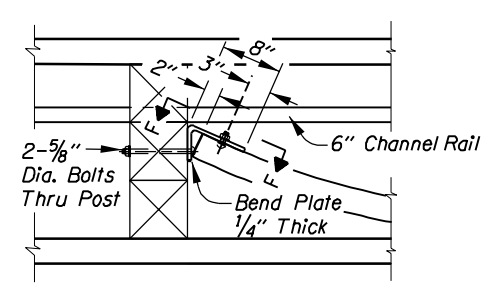
**DETAIL "A"**



**SECTION E-E**



**SECTION F-F**



**THRIE BEAM END DETAIL**

1. For Metal Median Barrier Details See RD400.

<b>OREGON DEPARTMENT OF TRANSPORTATION</b>	
	SHEET NO.

e\_detail135.dgn 6-23-03

DET 135