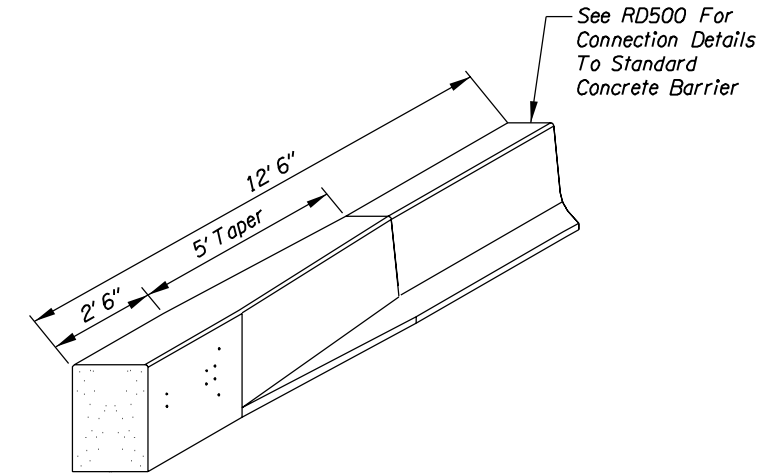
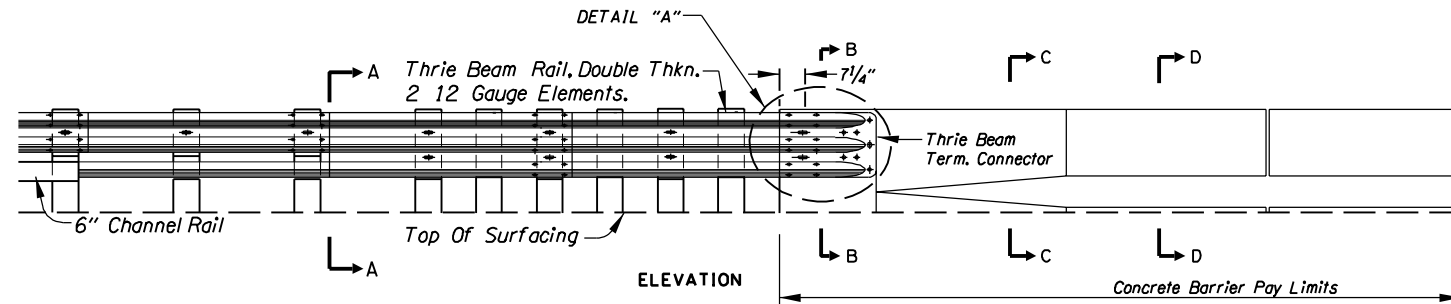
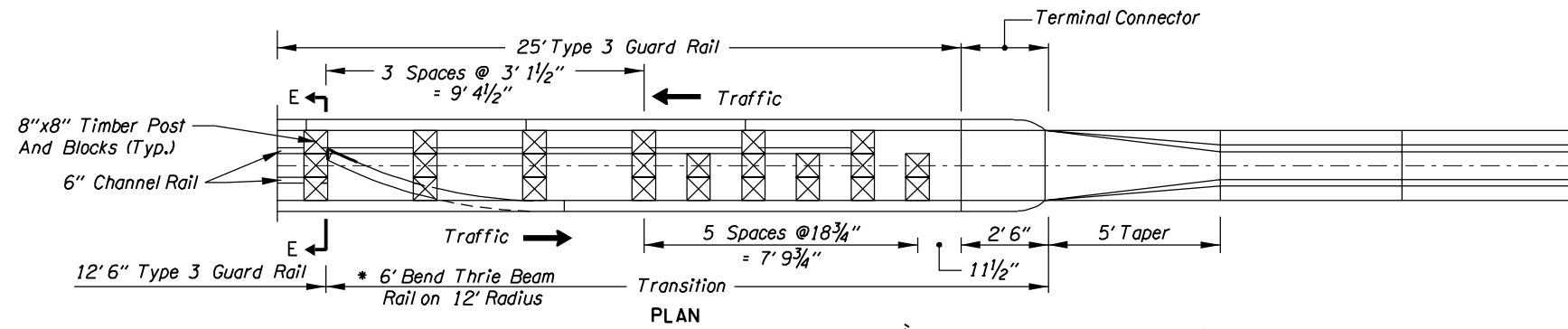


# METAL MEDIAN BARRIER CONNECTION TO STANDARD CONCRETE BARRIER

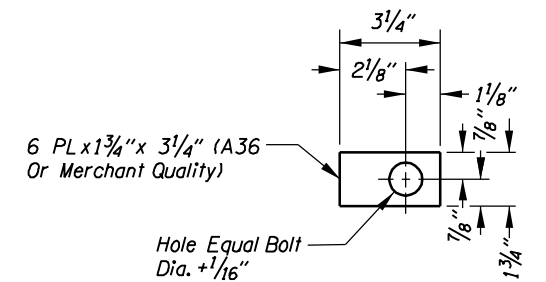
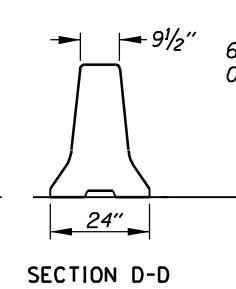
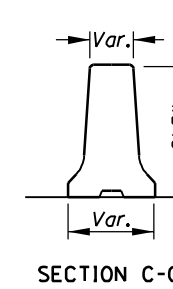
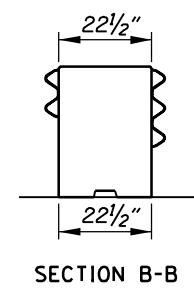
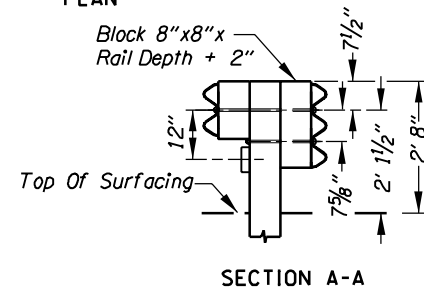
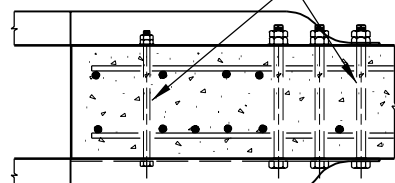


**CAST-IN-PLACE TRANSITION SECTION**  
 (See RD530 For Reinforcement Requirements)



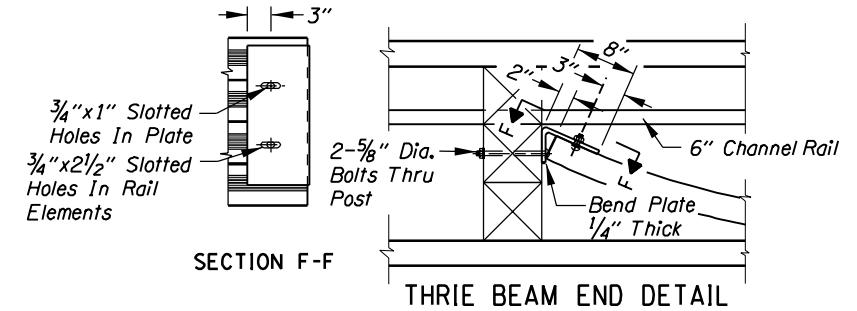
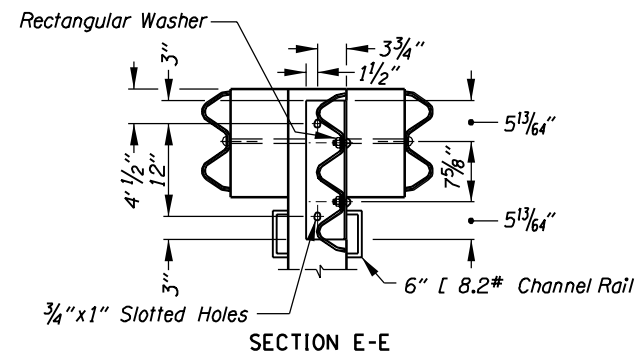
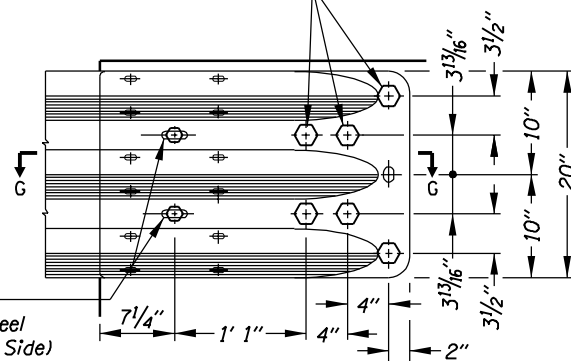
\* As An Option, Use A Single 10 gauge Asymetrical Transition Element, See RD410

Drill Horizontal Bolt Holes (Bolt Dia. + 1/16") In Hardened Concrete With Non-impact Rotary Drill.



**PLATE WASHER - "A"**

6 7/8" Dia. Galv. Post Bolts (ASTM A307) W/Std. Steel Washers Galv. (On Back Side) And Lock Nuts Or Jam Nuts.



1. For Metal Median Barrier Details See RD400.

OREGON DEPARTMENT OF TRANSPORTATION

SHEET NO.