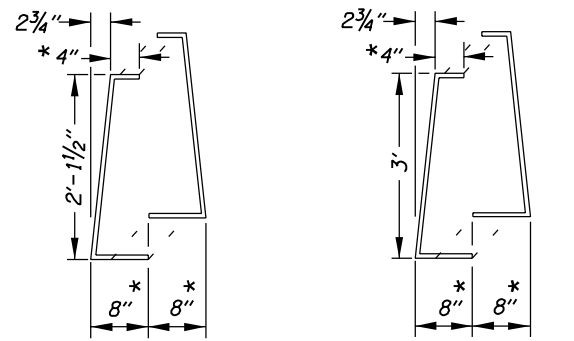


6" TOP CONCRETE BARRIER TO TALL CONCRETE BARRIER TRANSITION SECTION



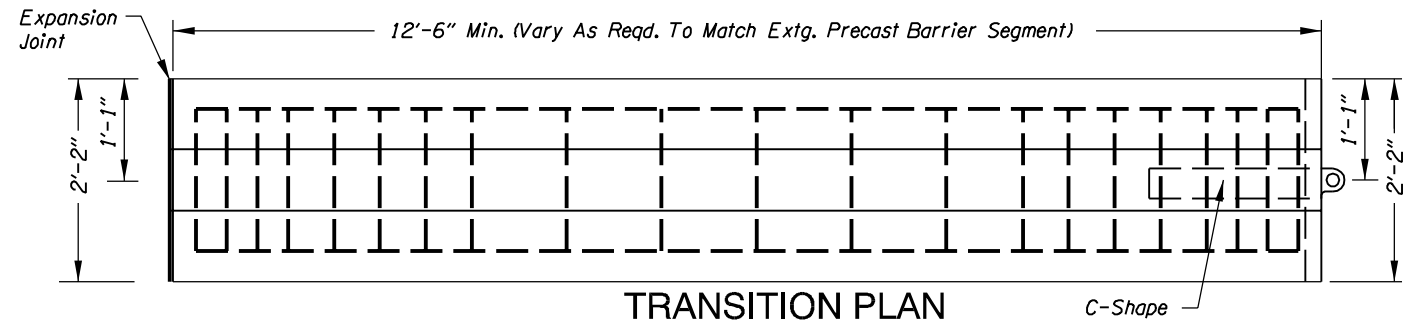
MODIFIED STIRRUP PAIR

SECTION A-A
#4 Rebar

MODIFIED STIRRUP PAIR

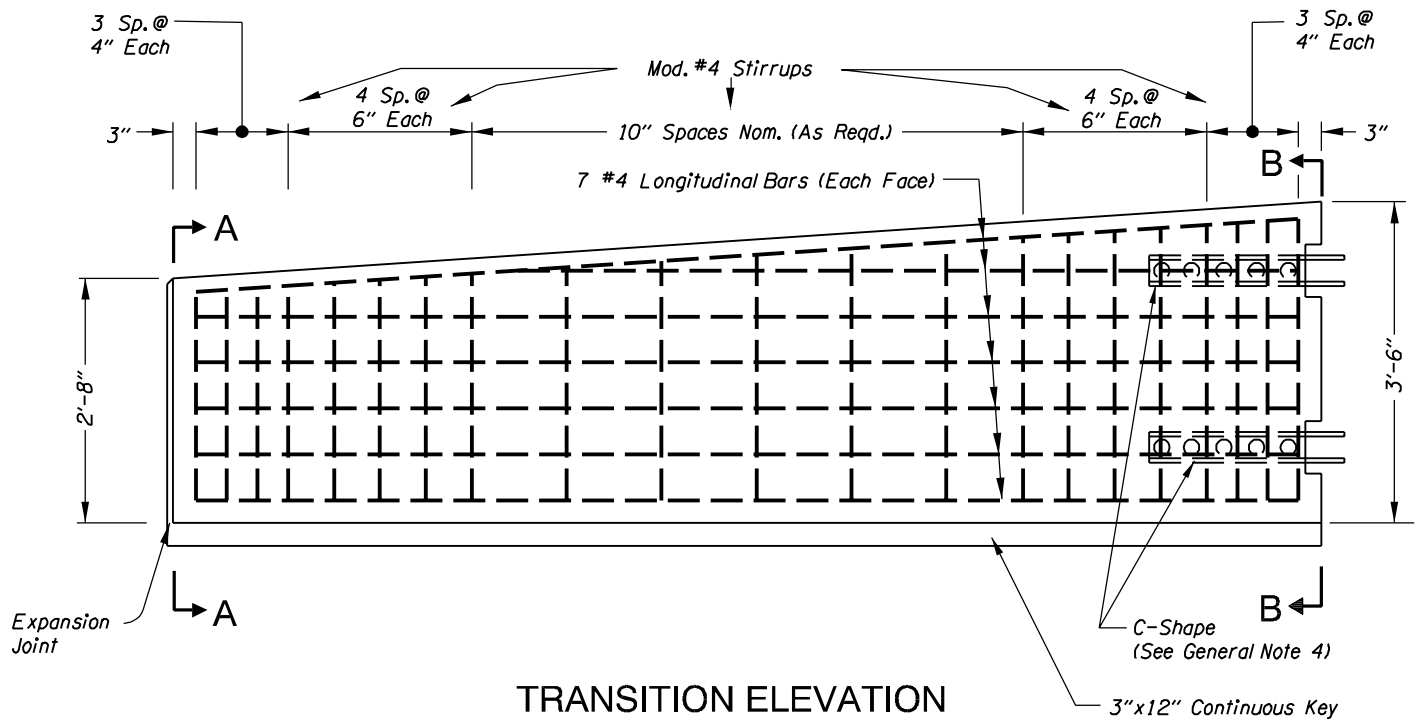
SECTION B-B
#4 Rebar

* Dimension Variable Through Transition Section.



TRANSITION PLAN

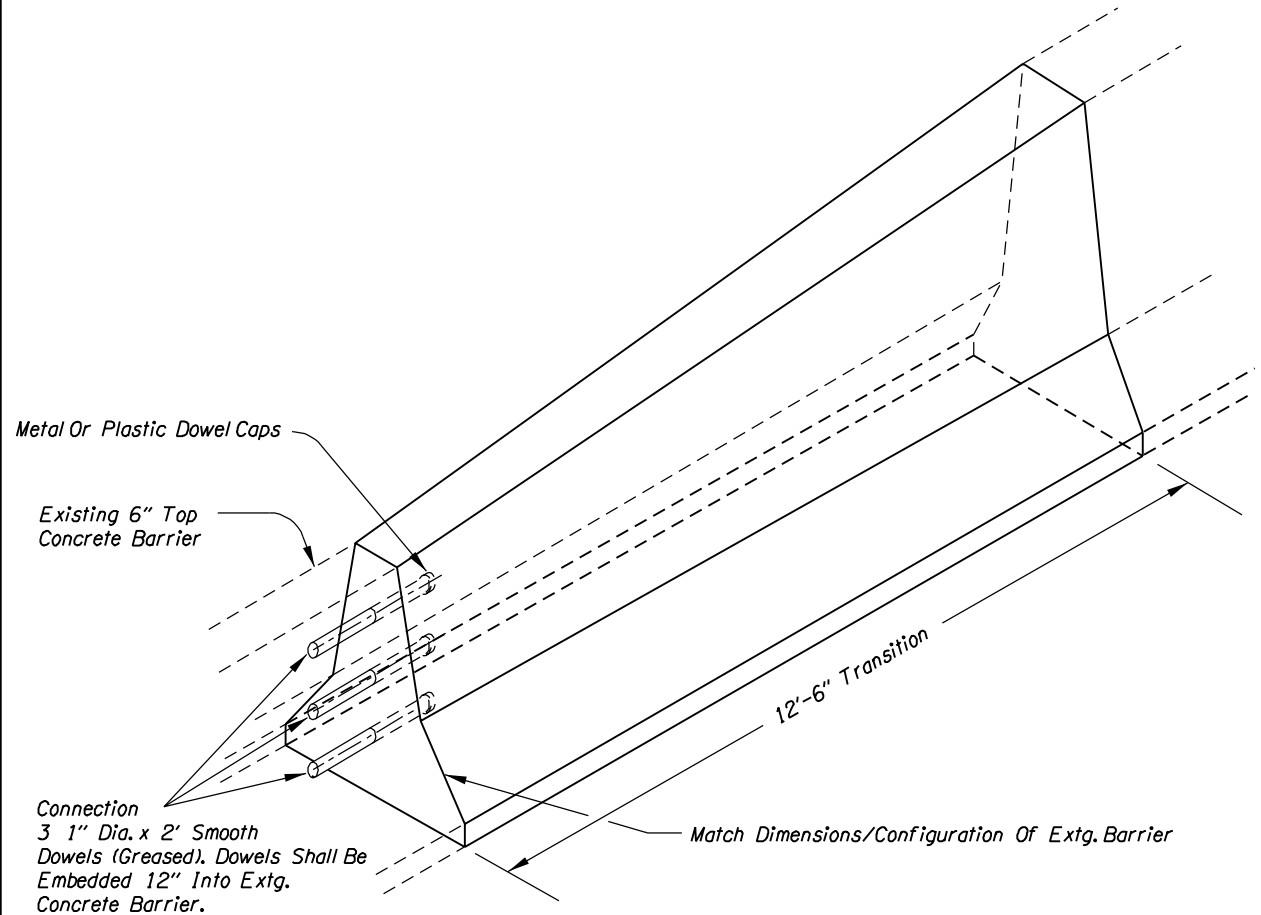
C-Shape



TRANSITION ELEVATION

C-Shape
(See General Note 4)

3" x 12" Continuous Key



Metal Or Plastic Dowel Caps

Existing 6" Top Concrete Barrier

Connection
3 1" Dia. x 2' Smooth Dowels (Greased). Dowels Shall Be Embedded 12" Into Extg. Concrete Barrier.

Match Dimensions/Configuration Of Extg. Barrier

12'-6" Transition

12'-6" TRANSITION SECTION FOR
MEDIAN BARRIER OR SHOULDER BARRIER (CAST IN PLACE)

GENERAL NOTES:

1. See Drg. No. RD500 For Details Not Shown.
2. All Reinforcing Steel Shall Conform To ASTM A706 Or AASHTO M31 (ASTM A615) Grade 420
3. All Metal Reinforcement Shall Be 2" (Min.) Clear Of Nearest Face Of Concrete, Unless Otherwise Shown.
4. Field Verify End Configurations Of Connecting Barriers Prior To Forming Connections At Transitions. Dowelled Connection Is An Acceptable Alternative.

OREGON DEPARTMENT OF TRANSPORTATION

SHEET NO.