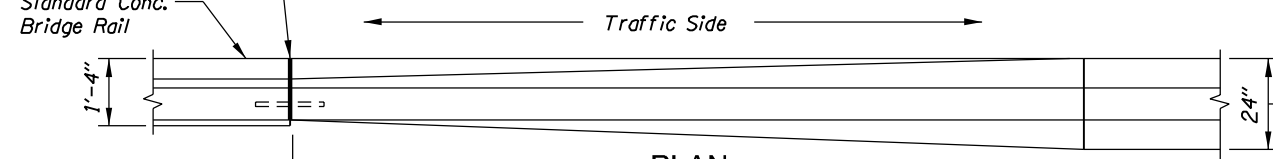


SINGLE SLOPE TO BRIDGE RAIL TRANSITION SECTION

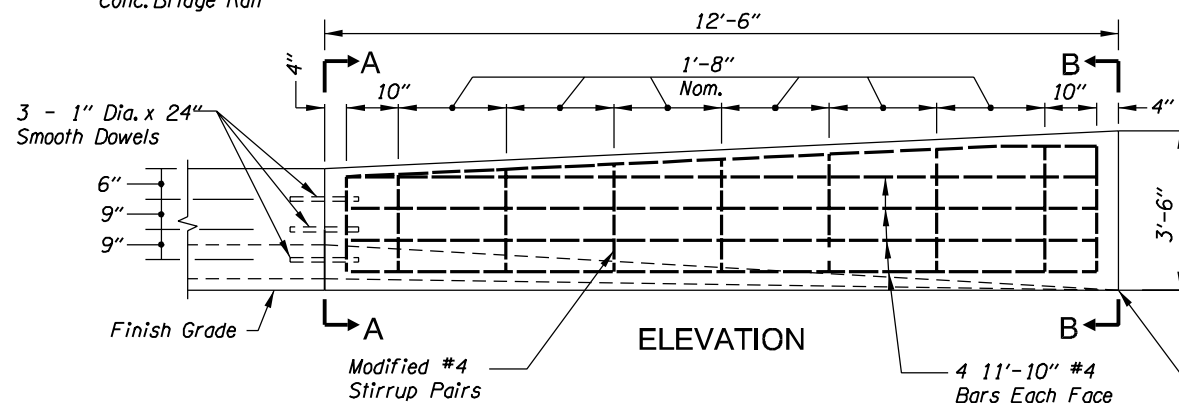
$\frac{3}{4}$ " Thkn. Preformed Expansion Joint Filler. Stop $\frac{5}{8}$ " Clear Of Face Of Concrete.

Standard Conc. Bridge Rail



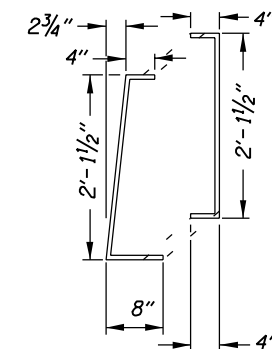
PLAN

Pay Limits For Std. Conc. Bridge Rail Pay Limits For Median Or Shoulder Barrier

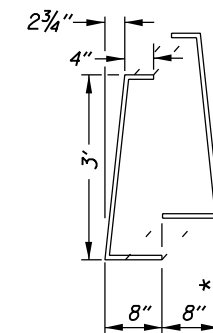


ELEVATION

NOTE:
End Configuration And Connection Details Shall Be As Detailed For The Shoulder Or Median Barrier Specified.

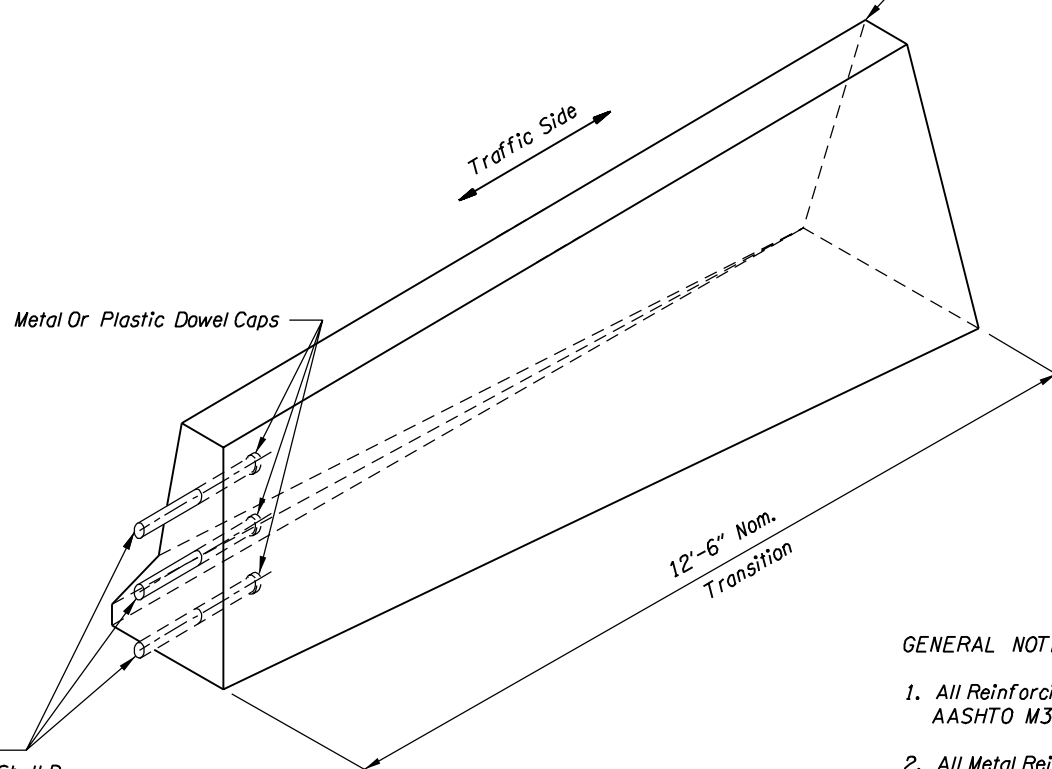


MODIFIED STIRRUP PAIR
SECTION A-A
#4 Rebar



MODIFIED STIRRUP PAIR
SECTION B-B
#4 Rebar

* Dimension Variable Through Transition Section.



CAST IN PLACE TRANSITION
(Looking At Side Away From Traffic)

3 1" Dia. x 24" Smooth Dowels (Greased). Dowels Shall Be Embedded 1'-0" Into Std. Conc. Bridge Rail.

GENERAL NOTES:

1. All Reinforcing Steel Shall Conform To ASTM A706 Or AASHTO M31 (ASTM A615) Grade 420.
2. All Metal Reinforcement Shall Be 2" Clear Of Nearest Face Of Concrete Unless Otherwise Shown.
3. See Std. Drg. No. RD500 For Additional Details.

OREGON DEPARTMENT OF TRANSPORTATION

SHEET NO.