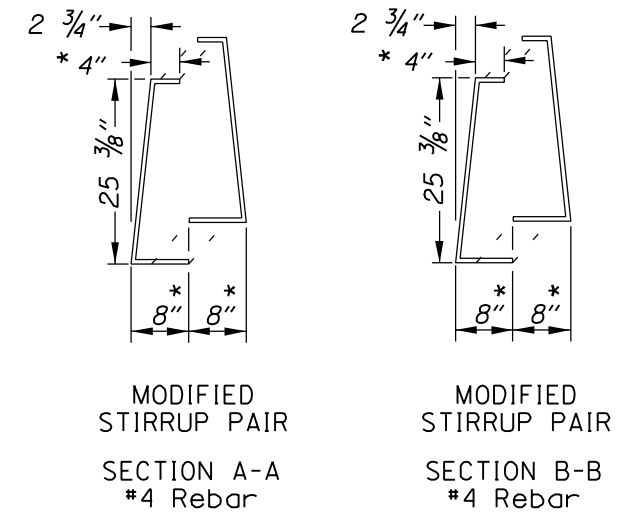
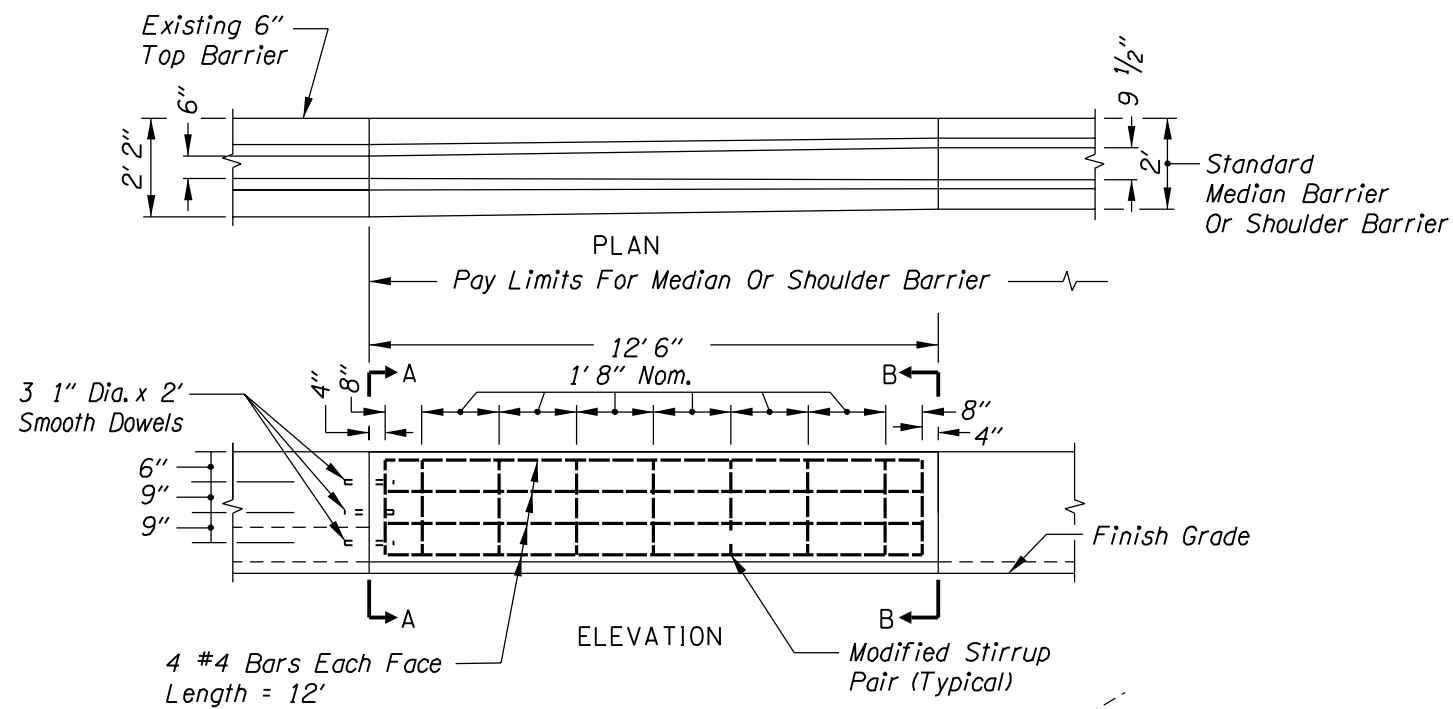


6" TOP CONCRETE BARRIER TO STANDARD CONCRETE BARRIER TRANSITION SECTION

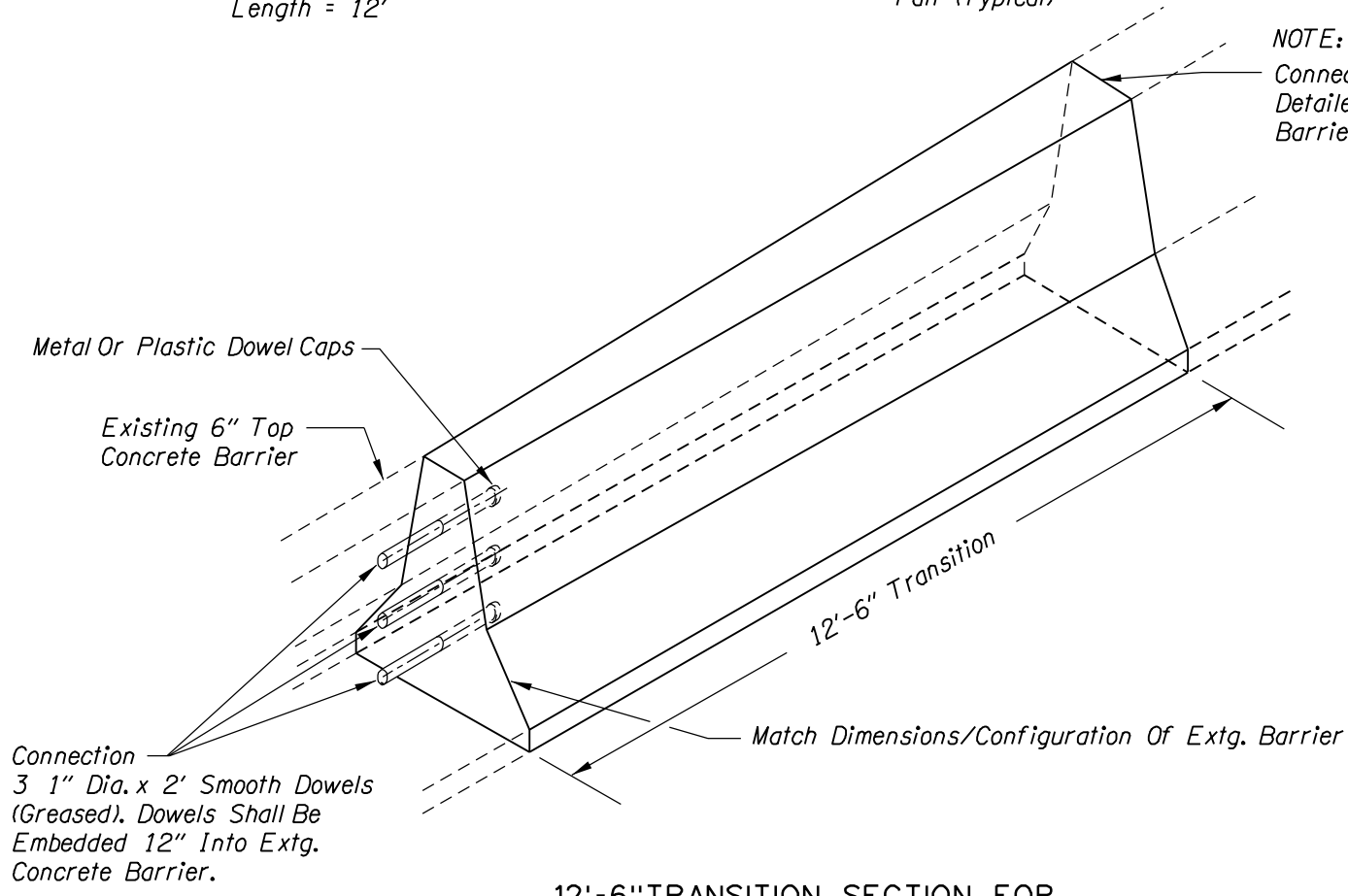


* Dimension Variable Through Transition Section.

NOTE:
Connection Details This End Shall Be As Detailed For The Shoulder And/Or Median Barrier Being Used.

GENERAL NOTES:

1. See Drg. No. RD500 For Details Not Shown.
2. All Reinforcing Steel Shall Conform To ASTM A706 Or AASHTO M31 (ASTM A615) Grade 420
3. All Metal Reinforcement Shall Be 1 1/2" (Min.) Clear Of Nearest Face Of Concrete, Unless Otherwise Shown.



12'-6" TRANSITION SECTION FOR
MEDIAN BARRIER OR SHOULDER BARRIER (CAST IN PLACE)

OREGON DEPARTMENT OF TRANSPORTATION	
	SHEET NO.

e_detail105.dgn 6-9-03

DET 105