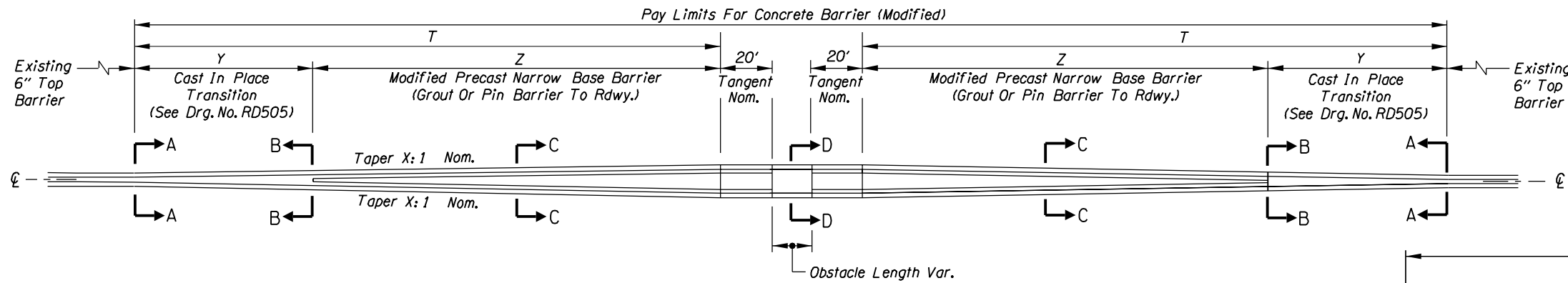
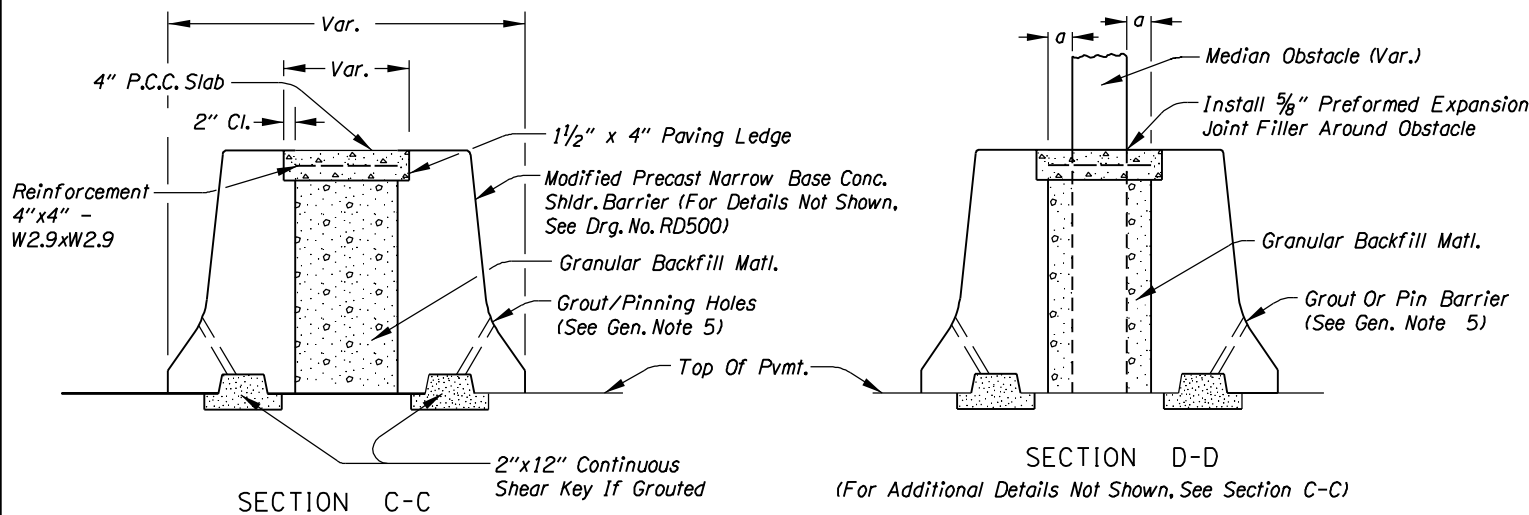
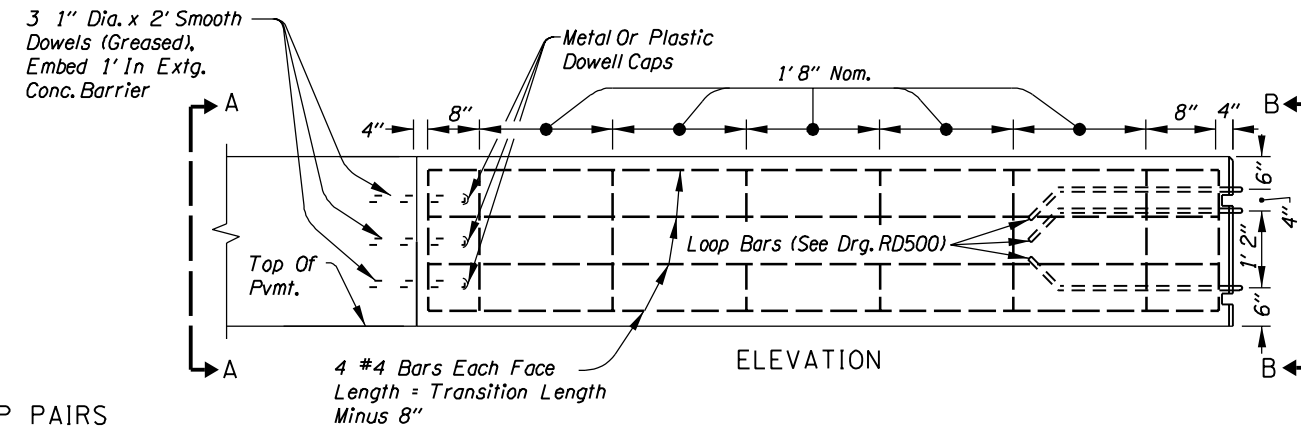
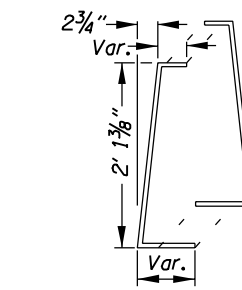
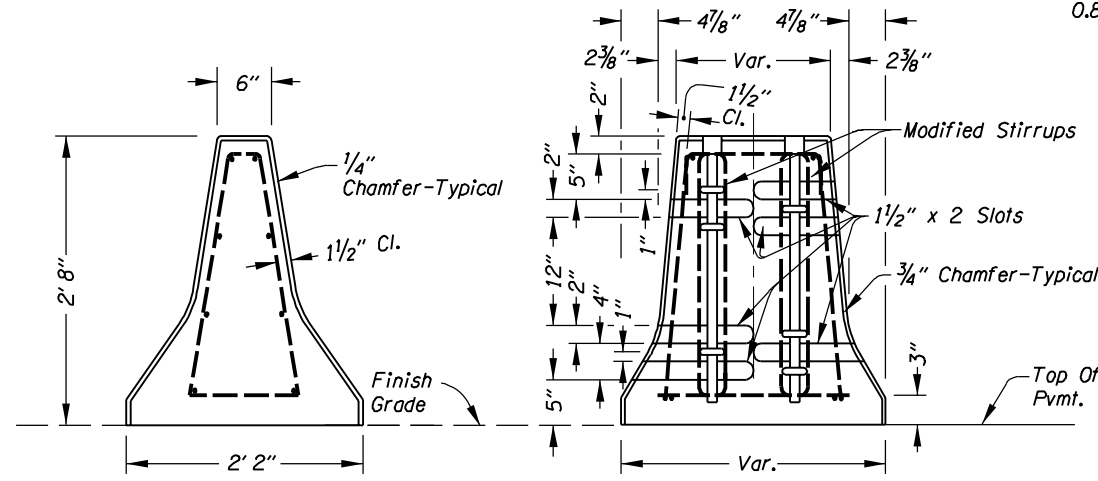
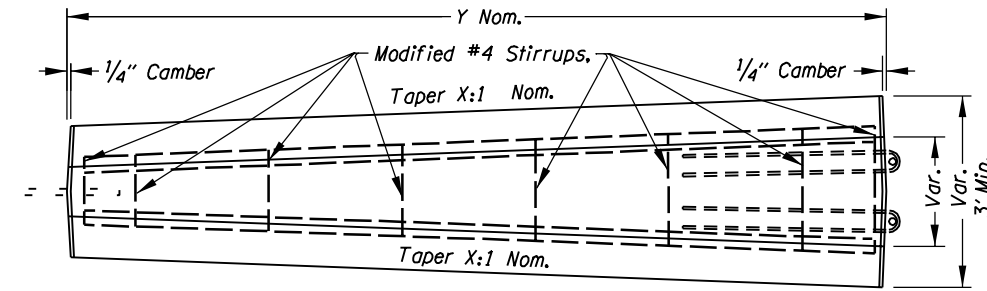


CONCRETE BARRIER (MODIFIED) AROUND MEDIAN OBSTACLE TRANSITION TO EXTG. 6" TOP BARRIER



$X = \text{Design speed in mph}$
 $Y = 0.5x$
 $T = (\frac{1}{2} \text{ Obstacle width in feet} + 0.32 + a)(X)$
 $Z = T - Y$
 $a = 2' \text{ Norm.}$
 $0.8' \text{ Min.}$



GENERAL NOTES

1. For Details Not Shown, See Drg. No. RD500.
2. Field Verify End Configurations Of Narrow Base Barrier And Extg. Barrier Prior To Forming Connections To Transitions.
3. All reinforcing steel shall conform to ASTM A706 or AASHTO M31 (ASTM A615) Grade 420
4. All Metal Reinforcement Shall Be 1/2" (Min.) Clear Of Nearest Face Of Concrete, Unless Otherwise Shown.
5. Pinned Barrier - 2 Holes And Pins Req'd. Grouted Barrier - 4 Holes Req'd.

OREGON DEPARTMENT OF TRANSPORTATION

SHEET NO.