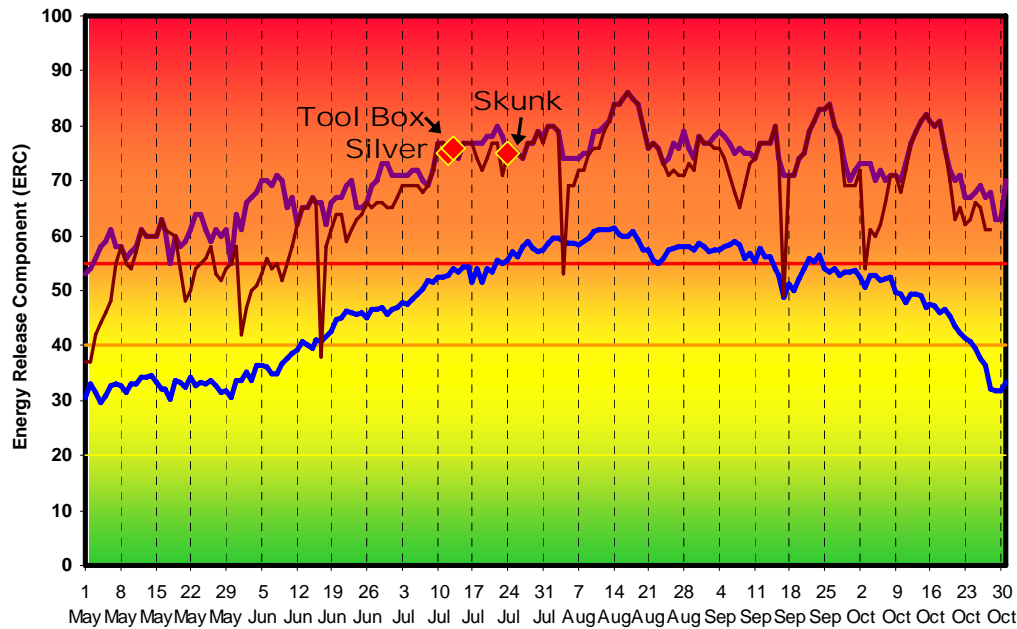


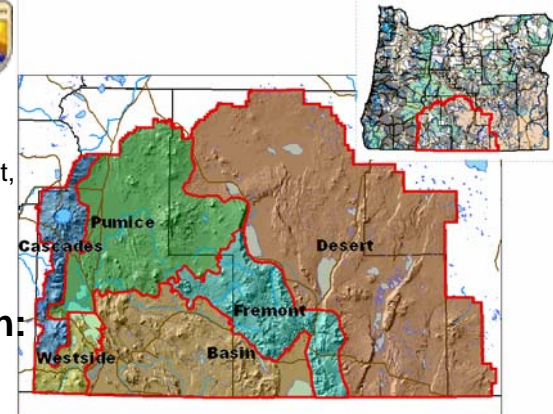
SCO Fire Danger - Pumice Area

FireFamily Plus, Chiloquin 353310, Model G, Meets NWCG Wx Station Standard

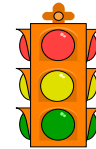


South Central Oregon:

- FWF Zone 623 – Cascade
- FWF Zone 624 – Pumice, Fremont, Westside, Basin
- FWF Zone 625 - Desert



Fire Danger Interpretation:



- EXTREME** – Caution.
- Moderate** -- Watch for change, especially WIND.
- Low** -- Lower potential, but always be aware.

Maximum -- Highest Energy Release Component by day 1986-2005.

Average – Mean Energy Release Component by day 1986-2005.

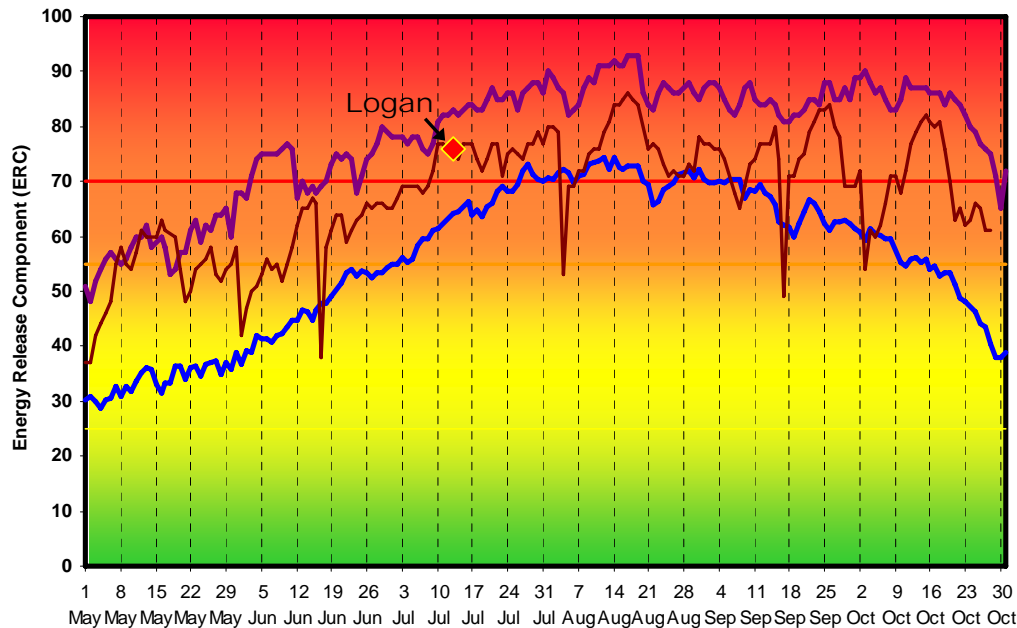
Year 2002 – Season trace of 2002, a severe season for south central Oregon

Local Thresholds -- Watch out: Combinations of any of these factors may greatly increase fire behavior:

- Windspeed** over 15 mi/hr (*reduce 20' wind 0.6-0.1 for midflame wind*),
- Relative Humidity (RH)** less than 25%,
- Temperature** over 80°F,
- 1000-Hr Fuel Moisture** less than 15%.

SCO Fire Danger - Basin Area

FireFamily Plus, Gerber 353328, Model G, Meets NWCG Wx Station Standard



Remember what Fire Danger tells you:

- ERC gives general seasonal trends calculated from 2pm Temp, RH, daily Min/Max Temp and RH, and precip duration.
- Wind speed is NOT part of the ERC calculation.
- Watch local conditions and variations across the landscape — i.e. Fuels, Weather, and Topography.
- Listen to weather forecasts--especially WIND.

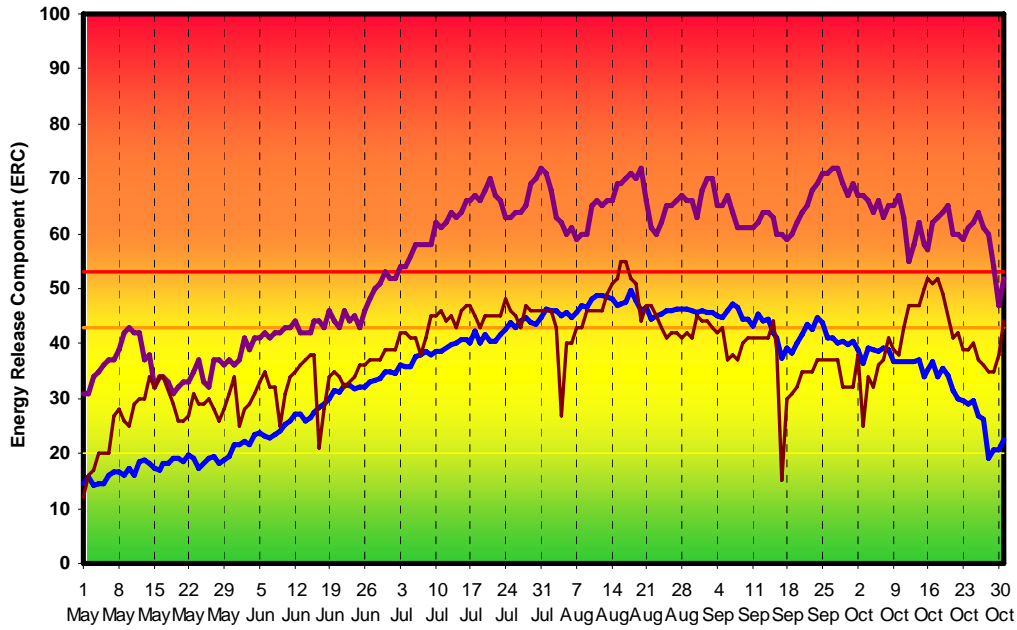
Past Experience:

23-Jun-1992	Cherry Creek	331 ac	ERC 43	Cascades
12-Jul-2002	Tool Box	54,800 ac	ERC 76	Pumice
2-Aug-1992	Lone Pine	30,809 ac	ERC 72	Pumice
13-Jul-2002	Winter	35,779 ac	ERC 83	Fremont
8-Aug-2001	Johnson	2691 ac	ERC 79	Fremont
9-Jul-1994	Spence	1,005 ac	ERC 55	Westside
27-Jul-2005	Simpson	2225 ac	ERC 77	Basin
3-Aug-2001	Indian Springs	1,624 ac	ERC 70	Basin
8-Aug-2001	Big Juniper	80,548 ac	ERC 68	Desert
12-Jul-2000	Beaty Butte	35,000 ac	ERC 70	Desert

Haines Index values of 5 or 6 indicate little atmospheric resistance to column development contributing to potential for large fire growth, extreme fire behavior, and plume dominated fires.

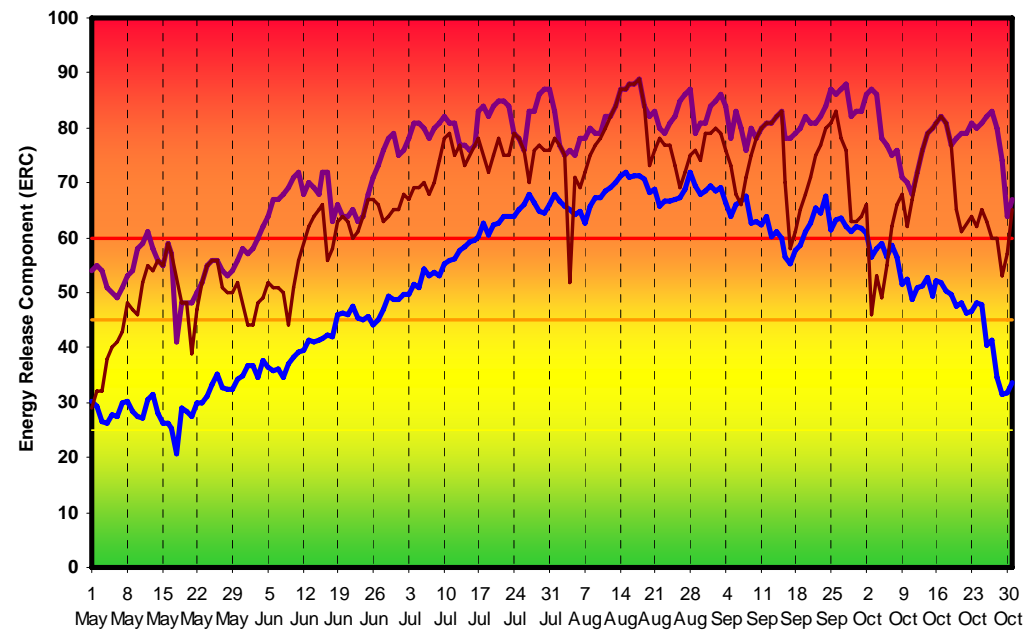
SCO Fire Danger - Cascades Area

FireFamily Plus, Seldom 353339, Model G, Meets NWCG Wx Station Standard



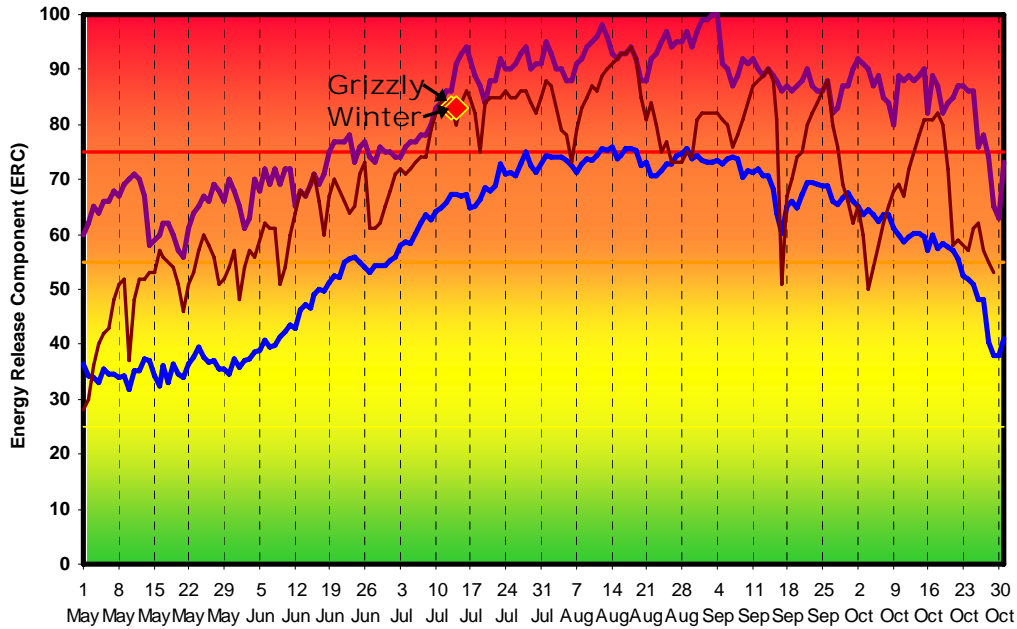
SCO Fire Danger - Westside Area

FireFamily Plus, Parker_Mtn 353344, Model G, Meets NWCG Wx Station Standard



SCO Fire Danger - Fremont Area

FireFamily Plus, Summit 353421, Model G, Meets NWCG Wx Station Standard



SCO Fire Danger - Desert Area

FireFamily Plus, Ft_Rock and Rock_Creek, Model G, Meets NWCG Wx Station Standard

