

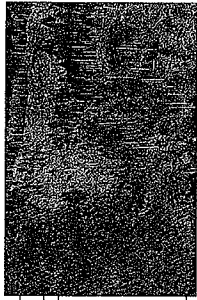
Board's Work Plan

Adapting Forest Management Plans



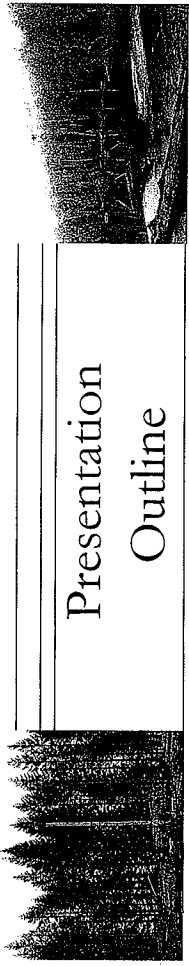
- Clatsop and Tillamook State Forests Strategies for Achievement of the Performance Measures

July 24, 2008



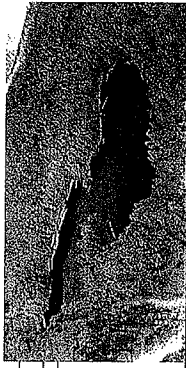
Stand Level Inventory (SLI) Imputation Progress Update

- Imputation implemented on Clatsop and Tillamook State Forests
 - Region Level – total initial standing volume approximately 0.15% higher than strata based inventory
 - Stand Level – differences range from 30% up to 300%
- SLI updated through December 31, 2007 to account for:
 - Recent harvests
 - December storms



Presentation Outline

- Data Development: Inventory, Yield Tables, and Stand Structure Algorithm
- Status of modeling work
- Strategies: Landscape Design, and Species of Concern
- Next steps



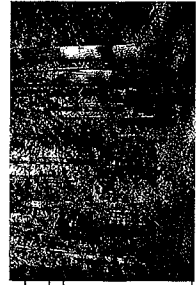
Growth and Yield Table Development

- Draft yield tables generated for Tillamook and Astoria; revised Forest Grove tables expected soon
- Based on imputed SLI data, updated pond values, revised stand structure algorithm



Stand Structure Algorithm Revision

- Ongoing improvement process uses additional stand data and expertise of field foresters and resource specialists
- Improved algorithm:
 - Layering criteria depends on species composition
 - Structure algorithms in SLI better align with model



Current Complex Stand Structure

North Coast districts' current complex structure (LYR and OFS) based on the algorithm

| District | Complex Structure |
|--------------|-------------------|
| Astoria | 20% |
| Forest Grove | 16% |
| Tillamook | 8% |
| Combined | 13% |



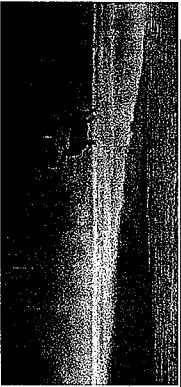
Status of Modeling Work

- H&H FMP with Take-Avoidance Alternative is being used to evaluate difference in model outputs do to:
 - Imputation based growth and yield tables
 - Revised stand structure algorithm
- H&H models are being adapted to provide data for the analysis of the new strategies to achieve the Performance Measures



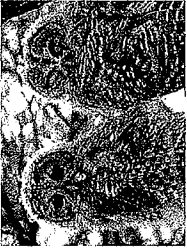
20 year Landscape Designs

- District landscape designs drafted for modeling
- Astoria and Forest Grove draft maps for developing 20% complex structure within 20 years



20 year Landscape Designs

- Tillamook District is anticipated to attain 10% - 15% complex structure within 20 years
- Aggregated landscape designs for Tillamook and Clatsop State Forests will result in 20% complex structure overall within 20 years



Species of Concern List

- Species of Concern list derived from ODFW's Oregon Conservation Strategy:
 - "Strategy Species" for the North Coast Range Ecoregion
 - Strategy Species include "low and declining species" and "species indicative of diversity and health of wildlife of the ecoregion."



Species of Concern Strategy Framework

- Strategies overarching goals are to maintain, enhance and restore habitats for species of concern – Performance Measure #6, Wildlife Habitat

Species of Concern Strategy Framework

- Foundational Strategies
 - Take-Avoidance strategies for northern spotted owls and marbled murrelets
 - NW FMP Aquatic and Riparian Strategies
 - NW FMP Green Tree, Snag and Down Wood Strategies
 - 20% complex structure landscape design in 20 years



Species of Concern Strategy Framework

- Discussing options to “transition” from current Salmon Anchor Habitat Strategy to a species of concern strategy for salmonids
 - FMP Aquatic and Riparian Strategies
 - Strategies linked to 20-year landscape design
 - Other supplemental strategies are being evaluated




Process for Evaluating the Management Strategies

- Model outputs and best available science will be used to:
 - Evaluate benefits and risks of management strategies relative to Species of Concern
 - Evaluate how well management strategies meet the 9 Performance Measure Targets
 - Assess the long-term sustainability of the social, environmental, and economic values being provided

Species of Concern Strategy Framework

- Ranking Watershed Condition in Northwest Oregon
 - Headed by Wild Salmon Center and a cooperative of NGOs (includes technical input from ODFW, ODF, PNW Research Station)
 - Evaluation of watersheds across all ownerships of northwest Oregon
 - ODF will consider this information in the development of salmonid strategies



Program Next Steps

- Finalize yield tables
- Incorporate new data and strategies in to Models
- Conduct test to validate model inputs and strategies
- Analyze strategies using model outputs
- On-going communication with:
 - Board Subcommittee
 - Forest Trust Land Advisory Committee
 - State Forest Advisory Committee
 - Stakeholders

| |
|--|
| |
| |
| |

Board Next Steps

- On-going subcommittee meetings
- September Board of Forestry Meeting / Tour
- November Board of Forestry Meeting – provide direction to the Department to:
 - Implement Strategies, and if necessary, start the process for revising the FMP; or
 - Adjust the Performance Measures and direct the Department to develop new strategies

Questions, comments & feedback

