



Board of Forestry

State Forests Work Plan Revised
2009

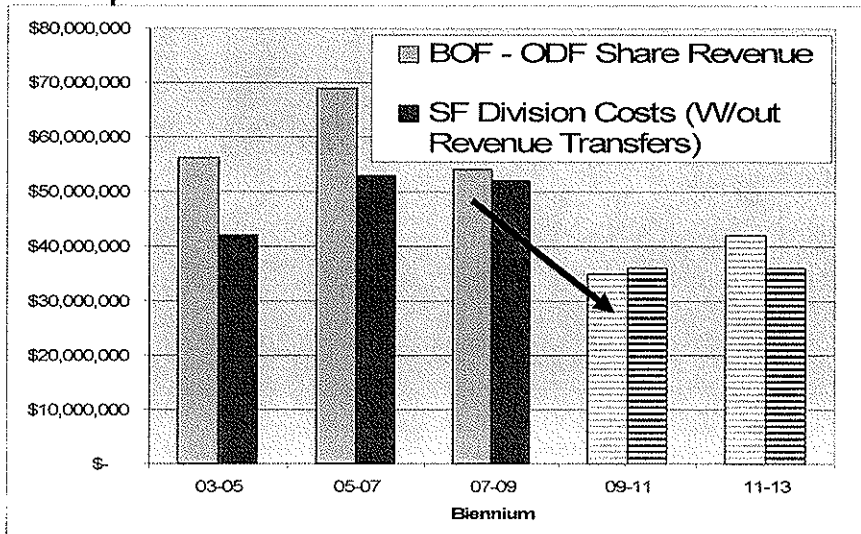


Information:

State Forests Budget Reductions

- Management costs must align with revenues
 - No General Fund in State Forests revenue streams
- Revenue forecast
- Board Policy Direction in Northwest & Southwest Forest Management Plans
- Investment levels
- Staffing capacity and Division priorities

Securing sufficient revenue to achieve desired outcomes



Board FMP Policy Direction Implementation Priorities

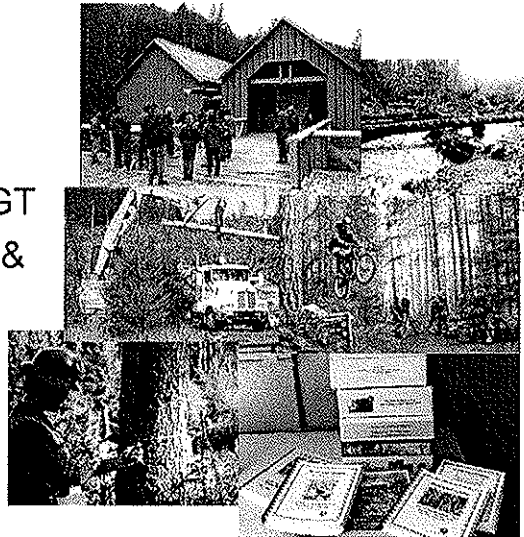
2001 Northwest & Southwest FMP's

- o Legally or contractually required activities.
- o Minimum activities necessary to achieve the social, economic, and environmental benefits identified in OAR 629-035-0020, including high priority monitoring activities, while emphasizing activities with higher economic return.
- o Fully implement all strategies and monitoring plans.



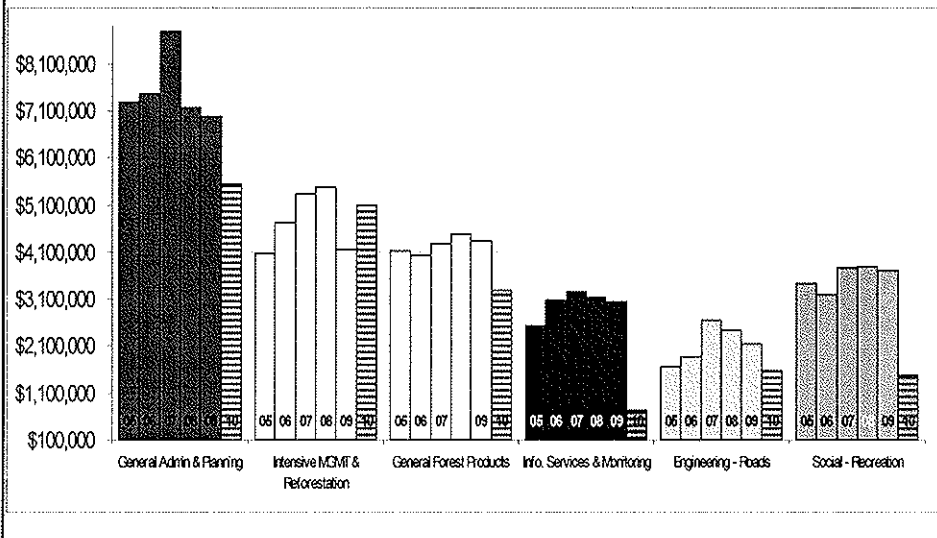
Investment Categories

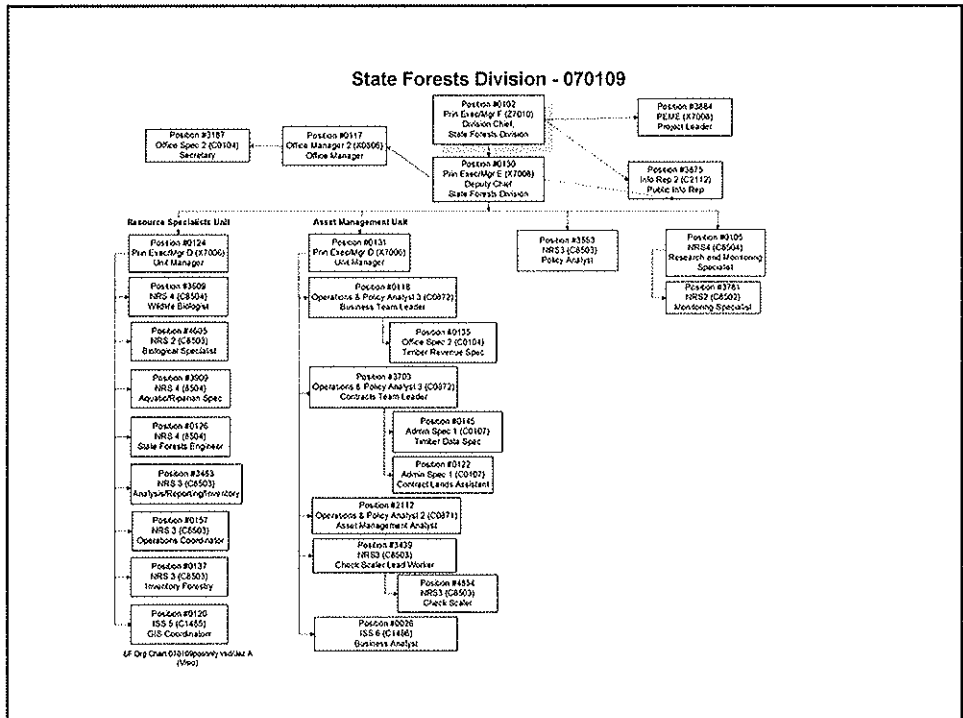
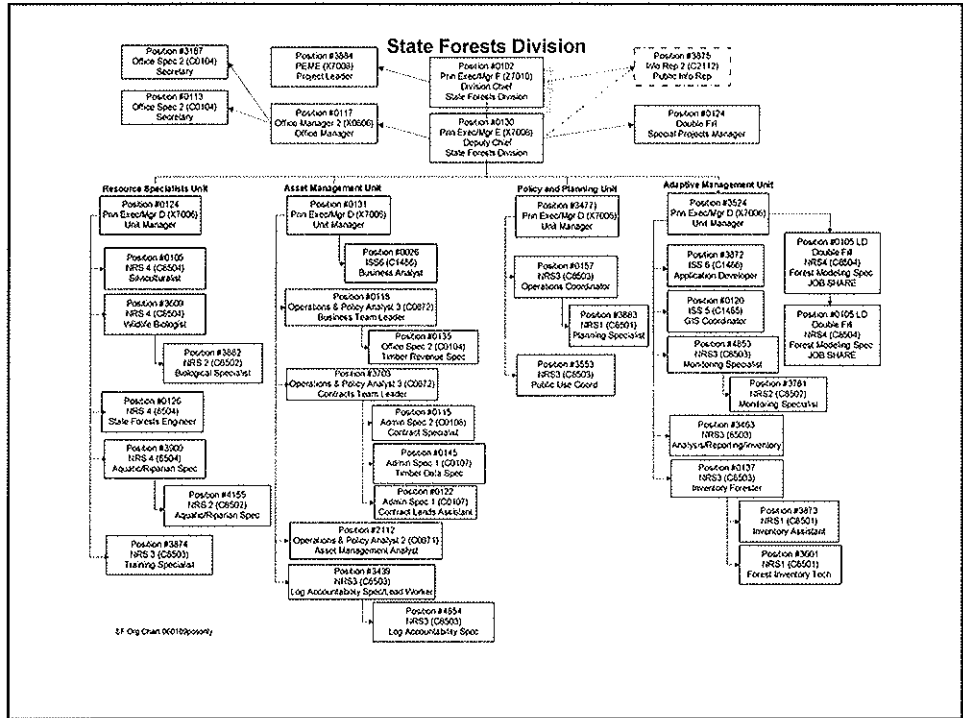
- Administration
- Reforestation & Young Stand MGT
- Forest Products & Marketing
- Information Services, R&M
- Engineering
- Social



Board of Forestry Investments

- FY 2005 – 2009
- Projected for 2010







Division Priorities

- o Workforce Goals
- o Forest Management Goals
- o Business Services Goals
- o Public Awareness and Support Goals



Not on this list:

- o Severely reduced monitoring
- o No stand level inventory
- o Tillamook Forest Center – reduced staff and hours
- o Reduced staff in all programs and areas
- o Reduced silvicultural investments



Implementation Priorities

2001 Northwest & Southwest Forest Management Plan - Implementation Priorities

- Legally or contractually required activities.
- Minimum activities necessary to achieve the social, economic, and environmental benefits identified in OAR 629-035-0020, including high priority monitoring activities, while emphasizing activities with higher economic return.
- Fully implement all strategies and monitoring plans.



Division Priorities

- Workforce Goals
- Forest Management Goals
 - Revise forest management plans
 - Gilchrist acquisition
 - Elliott forest management plans
 - Recreation
- Business Services Goals
- Public Awareness and Support Goals
 - Support FPFO
 - GPV and Planning Rules
 - Performance Measure Updates



Support Board of Forestry

- o Workplan sets this priority work



Presentation outline

- o Draft 2009 Board Work Plan
 - March 2009 priorities
 - Primary Board Issue
 - “Intermediate Board Issues”
 - Priorities, pace and scale discussion
 - Recommended approach for moving forward on work plan issues



March 2009 - WORK PLAN RECOMMENDATION

	APR	JUN	JUL	SEP	NOV
IBI 6 - FMP	X	X		X	X
IBI 7 - ELLIOTT				X	
IBI 5 - PM				TBD	
IBI 8 - REC					
IBI 9 - \$\$\$		x	x	x	x
IBI 2 - ADAPT		X			
IBI 4 - Exchange					



Primary Board Issue:



- o How will the Board use an adaptive management approach to inform current State Forests Division policy decisions?



Intermediate Board Issues

- o 1. Adapting the forest management plans through performance measures

o Complete



Intermediate Board Issues

- o 2. Assess the state forest review framework (adaptive management)

o Defer



Intermediate Board Issues

- o 3. Systematic Evidence Review

- o Complete



Intermediate Board Issues

- o 4. Land acquisition and exchange

- Ongoing work – Gilchrist, district exchange plans
- Review of strategic direction

- o November 09, January 09, July 2010, January 2011 and beyond



Intermediate Board Issues

- o 5. Improve the Board's Performance Measures for the State Forest Division

- o January



Intermediate Board Issues

- o 6. Improve NW and SW Forest Management Plans to achieve desired outcomes

- o Today, April/June 2010



Intermediate Board Issues

- o 7. Elliott State Forest management plan and habitat conservation plan - update

o January/March



Intermediate Board Issues

- o 8. Recreation on state forests

o June update



Intermediate Board Issues

- o 9. Improving economic performance (timber and ecosystem services)

- o Placeholder

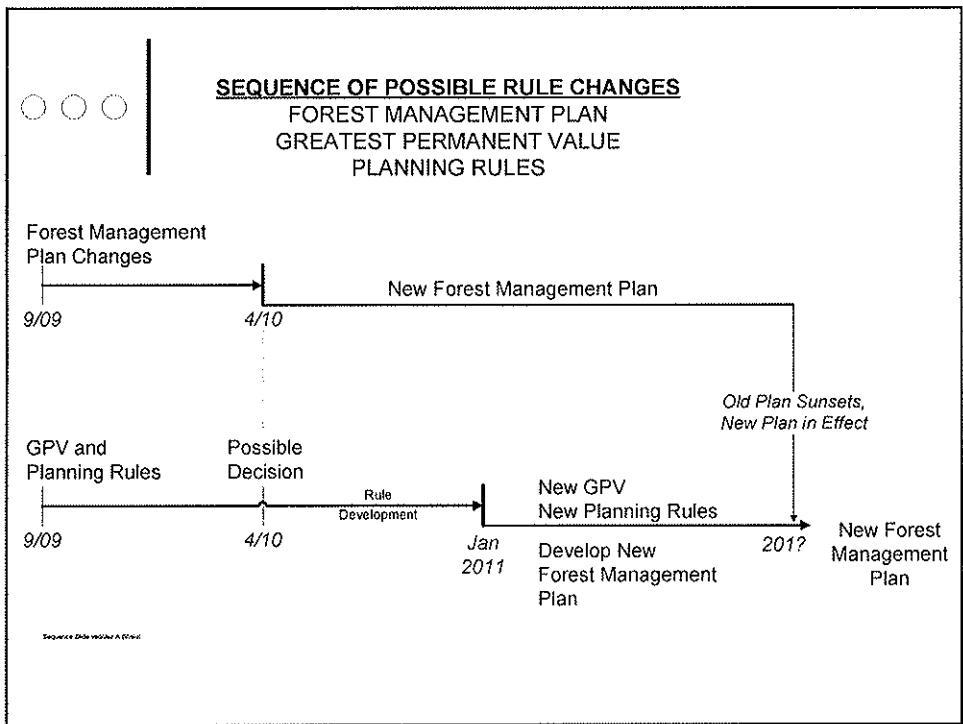


Intermediate Board Issues

- o 10. Review and revise OAR 629-035-0020 and as necessary other OAR 629, Division 35 rules.

- o November 09, January 10, April 2010 and beyond...

	2009	2010	2011
Board SF Work Plan – JBI #10	Nov - Dec	Jan – Mar •March – <u>April 23</u> •April – November	Jan – Jun
ORS 530 - GPV	•Staff recommendation on ORS interpretation •FTLAC comments •Board direction		
Advisory Committee Involvement		3rd Party Facilitated Work shop Purpose: Gain input on how to express rule concepts within ORS 530 - GPV interpretation and generate ideas for planning rule improvements •Board observes Public Advisory Committee discussion •FTLAC input and discussion with Board on development of rule concepts	
Rule Concepts		•Staff develop rule concepts •Draft rules concepts to Board	
Rule development and rule making		○ Staff development of rules ○ Staff refine draft rules	•Board direction to begin rule making •Rule making consistent with Administrative Procedures Act (APA) •Board approval of new rules (TBD)





Recommendation

- o Approve the State Forests Management Work Plan 2, IBI 0, contingent upon incorporation of amendments

