

Adapting Forest Management Plans Northwest and Southwest - Status Report

State Forests Program, September 6, 2007

Overview of information

- Performance measures
 - Development and role
- Initial Performance Measure Report
 - Results and Board Direction
- Program response
- Different management plan approaches
- Next Steps

Performance Measures (PM)

- Board work: ongoing from 2006
 - Staff scan for development of draft measures
 - Stakeholder discussions and public involvement
 - State forests workshop (April 2006)
- March 2007: Nine performance measures adopted
 - PMs link to Greatest Permanent Value (GPV)
 - PMs provide the Board with information on a periodic basis of the outcomes resulting from State Forestlands



- June 2007: Initial Report
 - Anticipate continuous improvement
 - Metrics covered environmental, social and economic outcomes
 - Targets not yet established
- Discussion included conceptual different looks
 - Effects on/interactions between two performance measures

Program Response

- FMP Options development workgroup
- Purpose:
 - Develop realistic options for Board consideration in November
- Workgroup
 - Chair/facilitator: Dave Lorenz
 - North coast lead: Ron Zilli
 - Staff specialists and districts

Program Response

- Sideboards and assumptions
 - Focus on the north coast districts
 - Focus adjustments on landscape design and structure
 - Other strategies will be reviewed in a timely and systematic manner that will be outlined in the future with the Board
 - Assume current program take avoidance approach / ESA compliance mechanism
 - Northern spotted owls and marbled murrelets

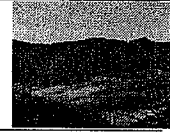
November Board deliverables

- Conceptual scenarios with different levels of analytical rigor (i.e. no model solution reviews on some)
- Effects of alternatives on performance measures/ targets
 - 1-2 decades
 - Long-term
- Characterization of species of concern protection/options
- Qualitative evaluation of how these would play out on other districts

Options development

- Northwest and Southwest district meetings
- North coast meetings
- Steering committee updates/decisions
 - Three options
 - Astoria pilot

Option 1: Emphasis Zone Approach



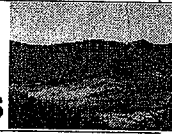
- Alternative Parameters and Ranges
 - Integrated landscape design
 - Conservation Emphasis Zone (30%-50%)
 - Wood Production Emphasis Zone (50%-70%)
 - Threatened and endangered (T&E) species strategy
 - Riparian Strategy
 - Green Trees and Downed Wood
 - Rotation Age

Option 2: Current FMP



- Alternative Parameters and Ranges:
 - Complex Structure (30%-50%)
 - T&E Strategy:
 - All districts State Forests Take Avoidance

Option 3: Current FMP with ESA options



- Alternative Parameters and Ranges:
 - Complex Structure (30%-50%)
 - T&E Strategy:
 - State Forests Take Avoidance - north coast
 - Other districts - HCP

Next Steps

- Development of draft Board targets for performance measures
- Analysis on performance measures targets
 - 1-2 decades vs. long-term
 - Trend against target
 - Not foreclosing options
- Development/refinement of planning framework
 - Adaptive management framework
 - Systematic schedule for reviewing other strategies
 - Integration of BOF and ODF decision space

Board decisions in November

- Board direction on performance measures targets
 - ODF recommendations on the future of the FMP depend on board decision/direction on targets
 - Performance measures with targets = GPV (desired outcome)
 - Achieved through State Forests management adjustments
 - Management adjustment recommendations may be a combination of approaches to meet desired outcome

