

INTRODUCTORY INFORMATION

TABLE OF CONTENTS

State Board of Agriculture Organization	1—3
Certification	1—5
Legislative Action	
Budget Report	2—1
Agency Summary	
Agency Summary Narrative	3—1
Budget Summary Graphics	3—1
Mission Statement and Statutory Authority	3—2
Agency Plans	3—2
Environmental Factors	3—6
Initiatives	3—9
Criteria for 2007-09 Budget Document	3—9
Key Performance Measure Criteria	3—11
Performance Measure Forms	3—12
Sustainability	3—53
Regulatory Streamlining	3—67
Other Considerations	3—68
Summary of 2007-09 Budget	3—69
Reduction Options	3—73
2005-07 Organization Chart	3—78
2007-09 Organization Chart	3—79
Agencywide Appropriated Fund Group	3—107
Agencywide Program Unit Summary	

Revenues

Revenue Forecast Narrative/Graphics	4—1
Detail of Fee, License, or Assessment	
Revenue Proposed for Increase	4—4
Proposed for Increase	4—4
Detail of Lottery Funds, Other Funds, and Federal Funds Revenue	4—6
Agencywide Revenues and Disbursements Summary	4—10
Program unit: Administration and Support Services	
Program Unit Organization Chart	5—1
Program Unit Narrative	5—3
Administration	5—3
Farm Mediation	5—4
Essential and Policy Package Narrative and Fiscal Impact Summary	5—6
Detail of Lottery Funds, Other Funds, and Federal Funds Revenue	5—29
Program Unit Appropriated Fund and Category Summary	5—30
Program unit: Food Safety	
Program Unit Organization Chart	6—1
Program Unit Narrative	6—3
Food Safety Division	6—3
Measurement Standards Division	6—4
Laboratory Services	6—6
Animal Health and Identification Division	6—8
Essential and Policy Package Narrative and Fiscal Impact Summary	6—11
Detail of Lottery Funds, Other Funds, and Federal Funds Revenue	6—57
Program Unit Appropriated Fund and Category Summary	6—58

INTRODUCTORY INFORMATION

Program unit: Natural Resources

Program Unit Organization Chart	7—1
Program Unit Narrative	7—3
Natural Resources Division	7—3
Plant Division	7—5
Pesticides Division	7—7
Essential and Policy Package Narrative and Fiscal Impact Summary	7—11
Detail of Lottery Funds, Other Funds, and Federal Funds Revenue	7—88
Program Unit Appropriated Fund and Category Summary	7—90

Program unit: Agricultural Development

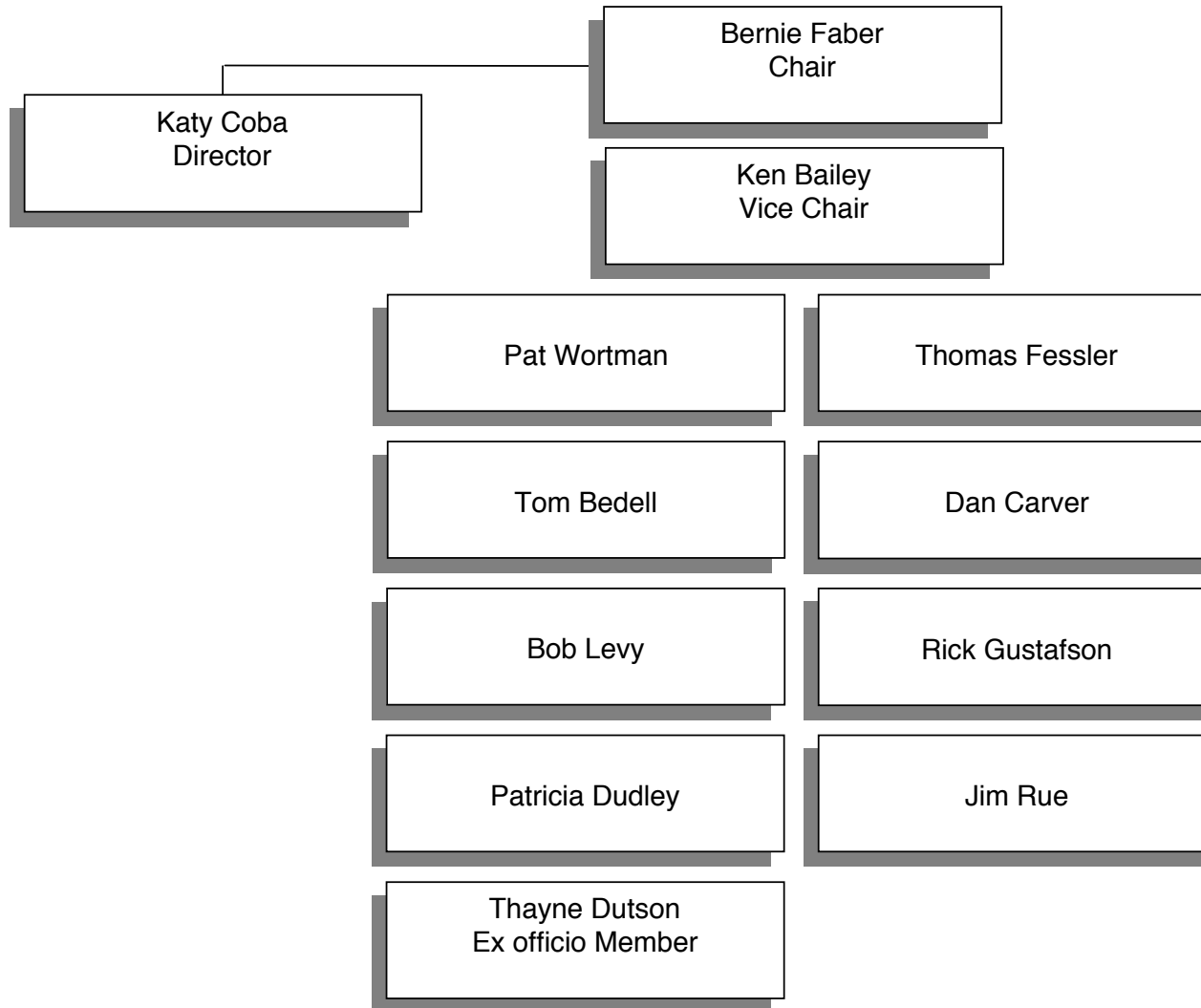
Program Unit Organization Chart	8—1
Program Unit Narrative	8—3
Agricultural Development and Marketing Division	8—3
Commodity Inspection Division	8—5
County Fair Commission	8—7
Farm Mediation	8—8
Essential and Policy Package Narrative and Fiscal Impact Summary	8—9
Detail of Lottery Funds, Other Funds, and Federal Funds Revenue	8—65
Program Unit Appropriated Fund and Category Summary	8—66

Special Reports

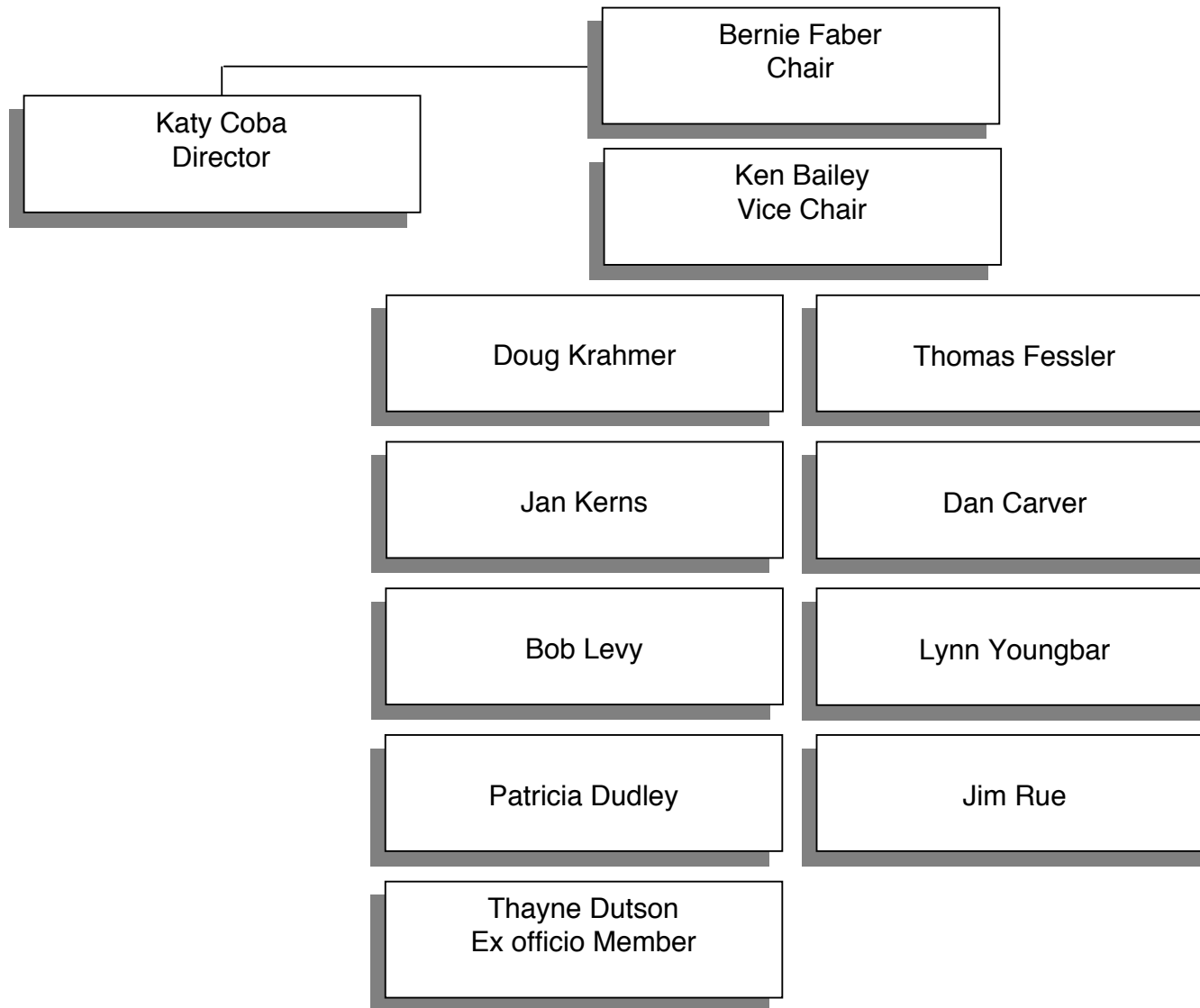
Audit Response Report	9—1
Complete 2003-2005 Audit report	9—2
Agency Training Report	9—11
Affirmative Action Report	9—13
Affirmative Action Plan for Biennium 2007-2009	9—13
Attachment A	9—15

STATE BOARD OF AGRICULTURE ORGANIZATION

2005-07 Legislatively Adopted Budget



State Board of Agriculture
Oregon Department of Agriculture
2007-09 Legislatively Adopted Budget



INTRODUCTORY INFORMATION

CERTIFICATION

I hereby certify that the accompanying summary and detailed statements are true and correct to the best of my knowledge and belief and that the arithmetic accuracy of all numerical information has been verified.

Oregon Department of Agriculture

AGENCY NAME

635 Capitol St. NE, Salem, OR 97301-2532

AGENCY ADDRESS

Director

SIGNATURE

TITLE

Notice: Requests of those agencies headed by a board or commission must be approved by those bodies of official action and signed by the board or commission chairperson. The requests of other agencies must be approved and signed by the agency director or administrator.