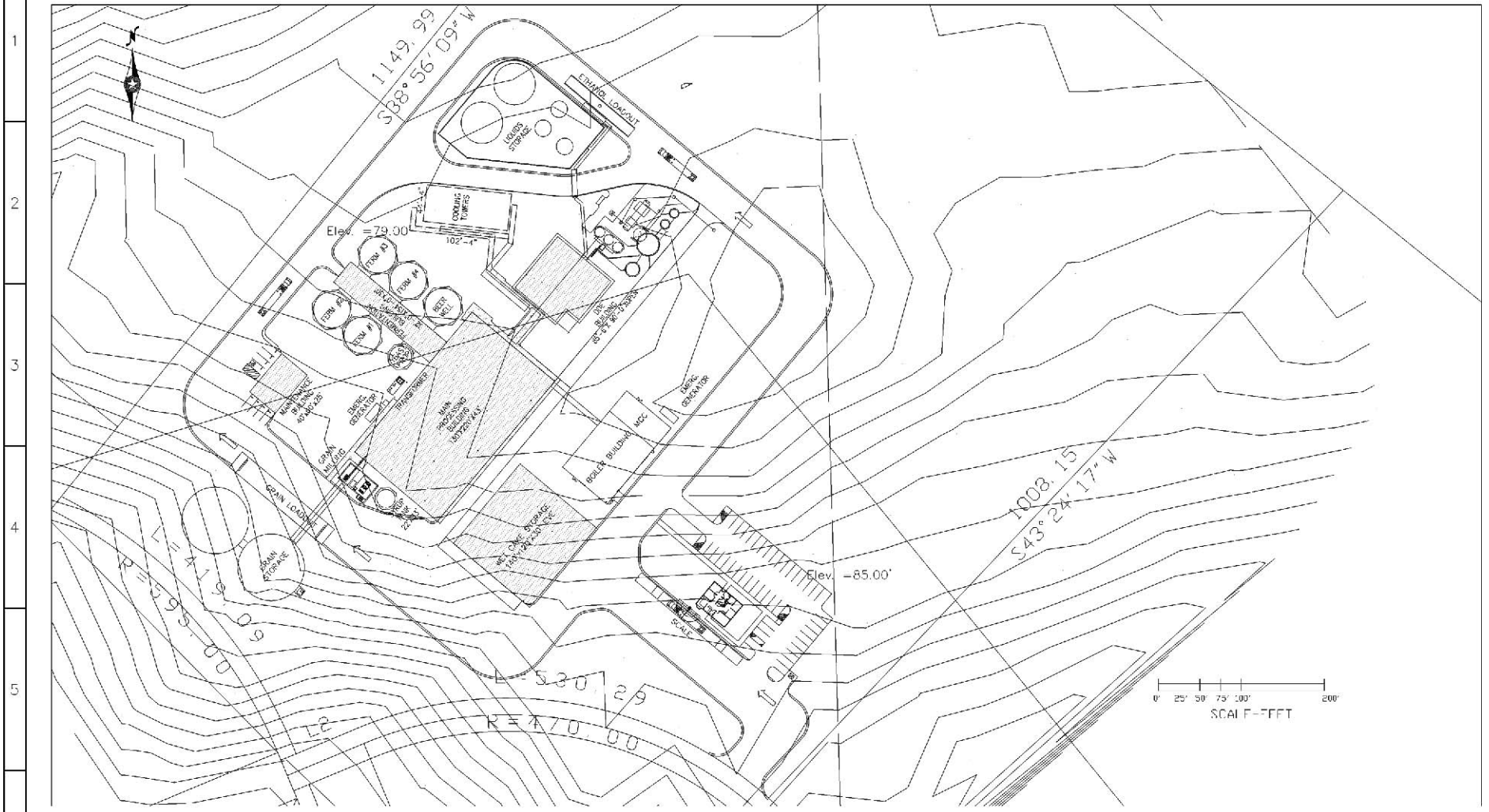


Pacific Ethanol, Inc.

Port of Morrow Ethanol Production Facility Figure G-2

C D E F G H I



SITE PLAN

CONFIDENTIAL

REVISIONS			
REV	DATE	DESCRIPTION	By
A	11/04/03	PRELIMINARY ISSUE	

Delta-T
www.deltat.com
Voice: (757)220-2950 Fax: (757)220-1126
Drawn By: AF Date: 14DEC05

Drawn By:	PORT OF MORROW
Client:	BOARDMAN
Location:	BOARDMAN, OR.