

**Oregon CAREAssist Program: GROUP II ALL SERVICES - Premium Payments, Medication Assistance and Medical Co-Pays**

3rd quarter of Calendar Year 2007 - January 2007 through September 2007

**Table 1A: Total GROUP II Costs by Month of Service for Premium Payments and Medication Assistance**

Costs	Jan	Feb	Mar	Apr	May	Jun	Jul	Aug	Sep	Oct	Nov	Dec	Total	% of Total
EMA	346.80	32.00	240.00	318.00	388.00	332.00	416.00	518.00	666.00	-	-	-	3,256.80	0.93
Non-EMA	151.00	72.00	333.00	149.73	570.50	382.50	267.00	709.19	261.00	-	-	-	2,895.92	1.07
<b>TOTAL</b>	<b>497.80</b>	<b>104.00</b>	<b>573.00</b>	<b>467.73</b>	<b>958.50</b>	<b>714.50</b>	<b>683.00</b>	<b>1,227.19</b>	<b>927.00</b>	<b>-</b>	<b>-</b>	<b>-</b>	<b>6,152.72</b>	<b>200.0%</b>

**Table1A: Total GROUP II Unduplicated Number of Clients by Month of Service Receiving- Premium Payments and Medication Assistance**

Clients	Jan	Feb	Mar	Apr	May	Jun	Jul	Aug	Sep	Oct	Nov	Dec	Total	% of Total
EMA	22	1	14	18	23	22	24	24	22				31	70.5%
Non-EMA	9	1	9	10	11	10	11	11	10				13	29.5%
<b>TOTAL</b>	<b>31</b>	<b>2</b>	<b>23</b>	<b>28</b>	<b>34</b>	<b>32</b>	<b>35</b>	<b>35</b>	<b>32</b>	<b>0</b>	<b>0</b>	<b>0</b>	<b>44</b>	<b>100.0%</b>

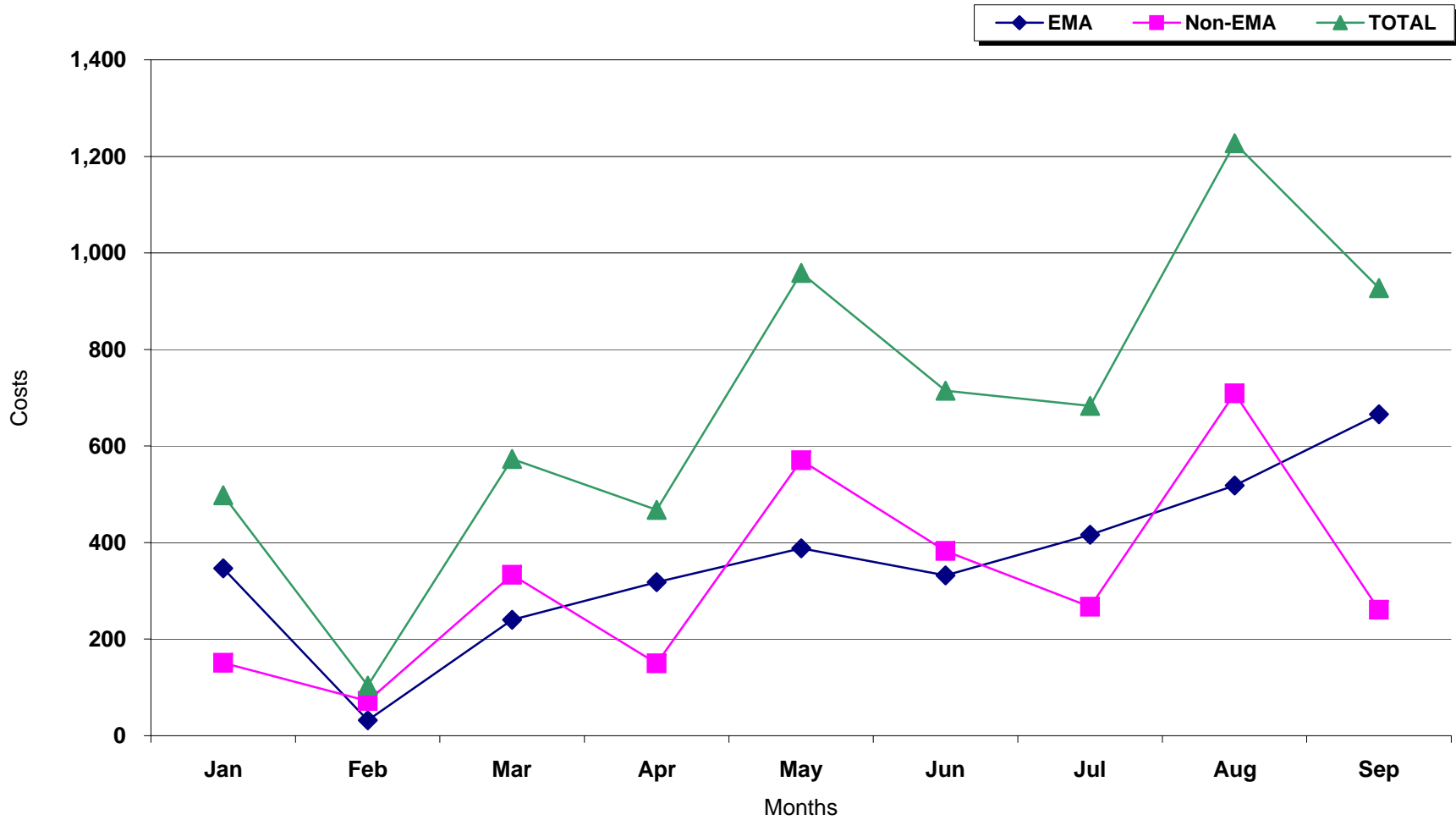
**Number of distinct clients enrolled in Group II**

	Jan	Feb	Mar	Apr	May	Jun	Jul	Aug	Sep	Oct	Nov	Dec	Total
<b>Clients</b>	<b>39</b>	<b>39</b>	<b>38</b>	<b>39</b>	<b>42</b>	<b>43</b>	<b>43</b>	<b>46</b>	<b>44</b>				<b>54</b>

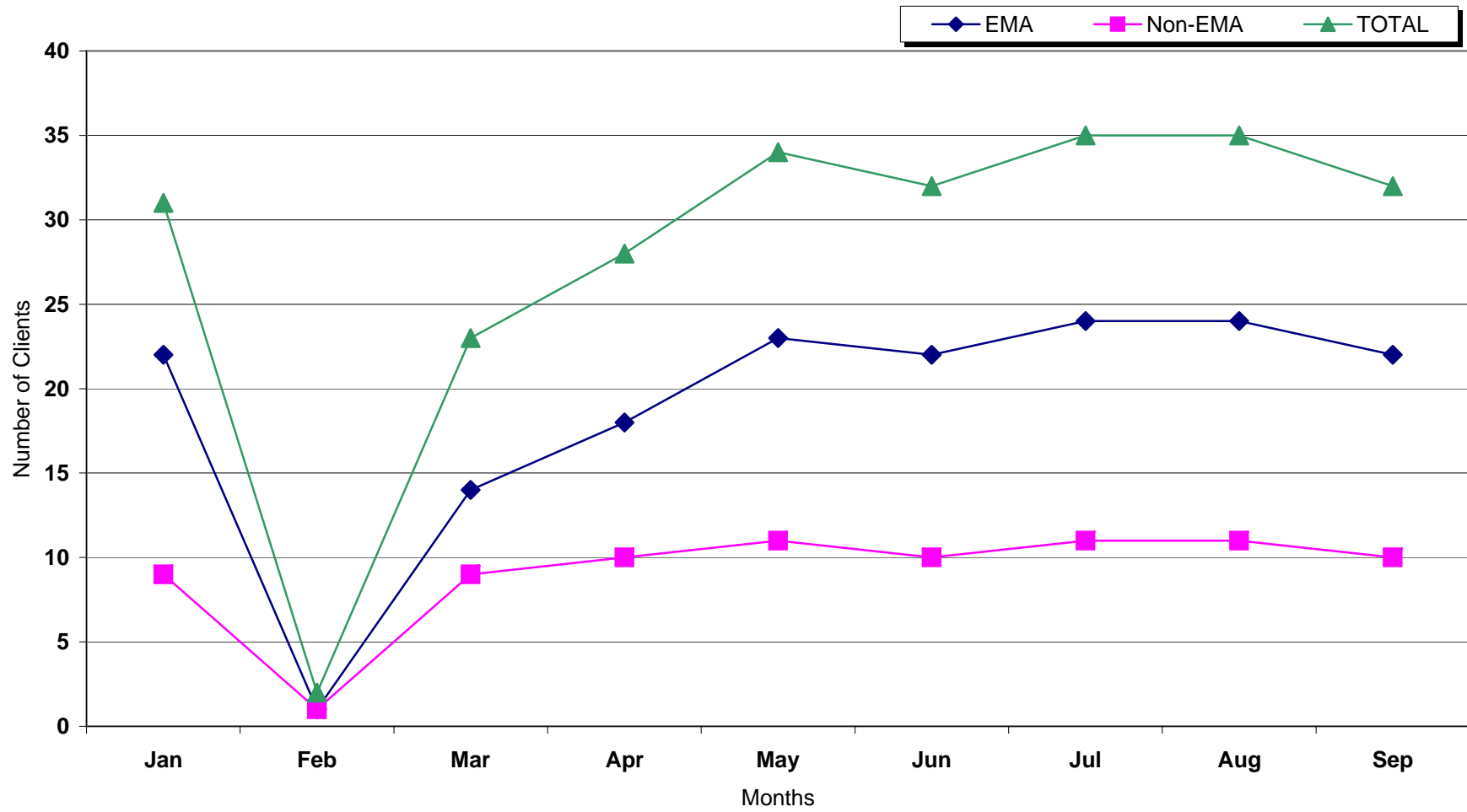
Notes:

- 1) Partial cost data for last two months reported because of the lag time in submission of billings for medications and medical co-pays.
- 2) There may be small adjustments in the data for late billings and/or refunds posted throughout the year.
- 3) Clients may have more than one monthly premium paid in the month of service - the majority of clients represented are those in OHP

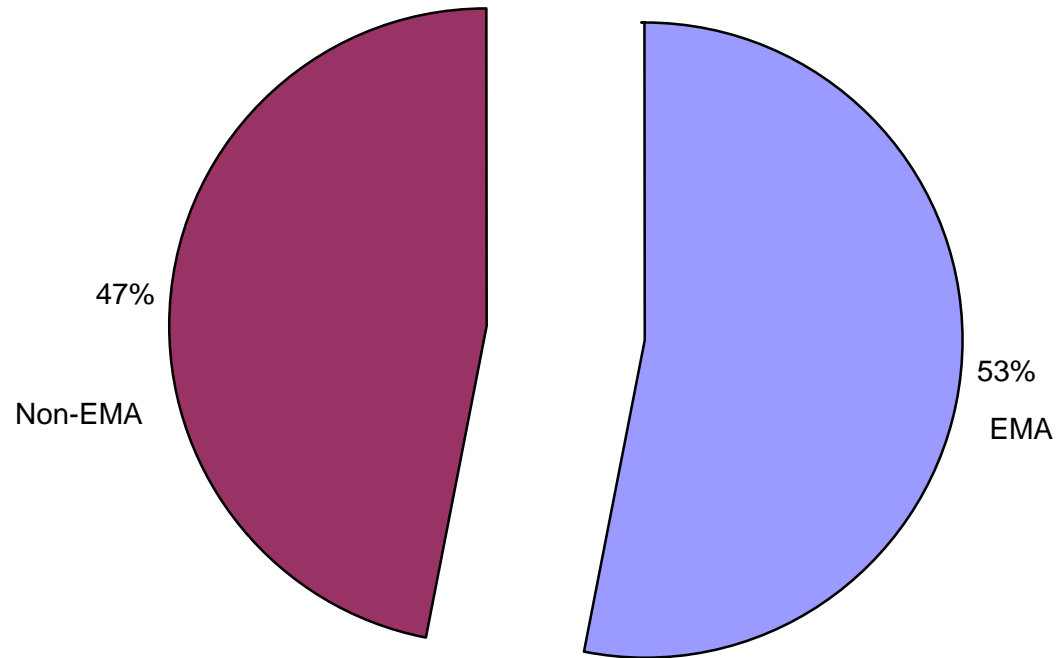
CAREAssist GROUP II  
Total Cost by Month of Service through 3rd quarter of CY2007  
(January 2007 to September 2007)



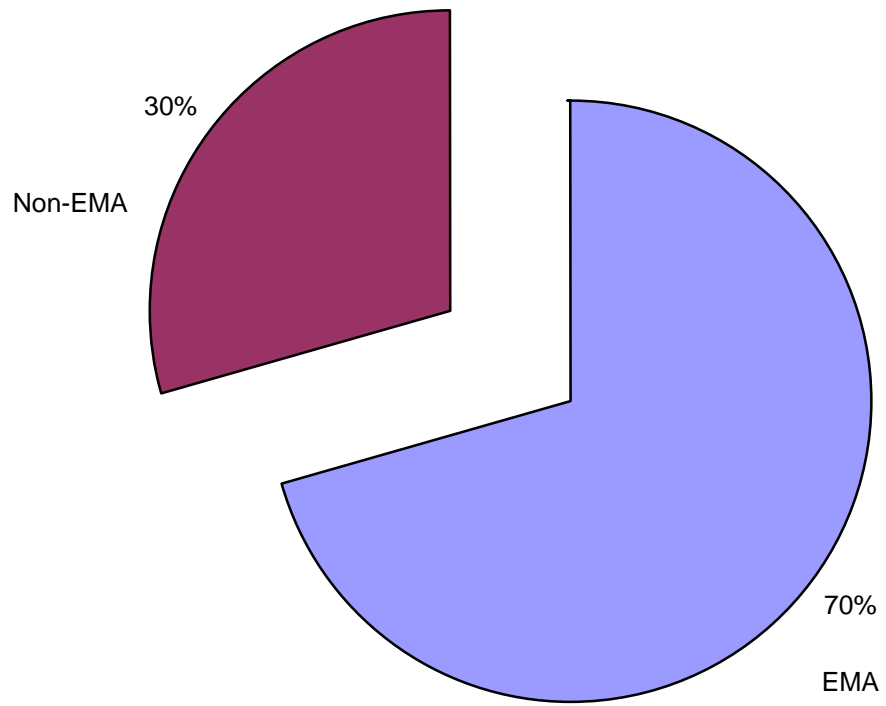
CAREAssist GROUP II  
Total Clients by Month of Service through 3rd quarter of CY2007  
(January 2007 to September 2007)



CAREAssist Total CROUP II Costs through 3rd quarter of CY2007:  
Percentage for EMA and Non-EMA



CAREAssist 44 Total GROUP II Clients through  
3rd quarter of CY2007:  
Percentage in EMA and Non-EMA



**Oregon CAREAssist Program: GROUP II - Premium Payments**  
**3rd qtr of Calendar Year 2007 - January 2007 through September 2007**

**Table 2A: GROUP II Costs for Premium Payments by Month of Service**

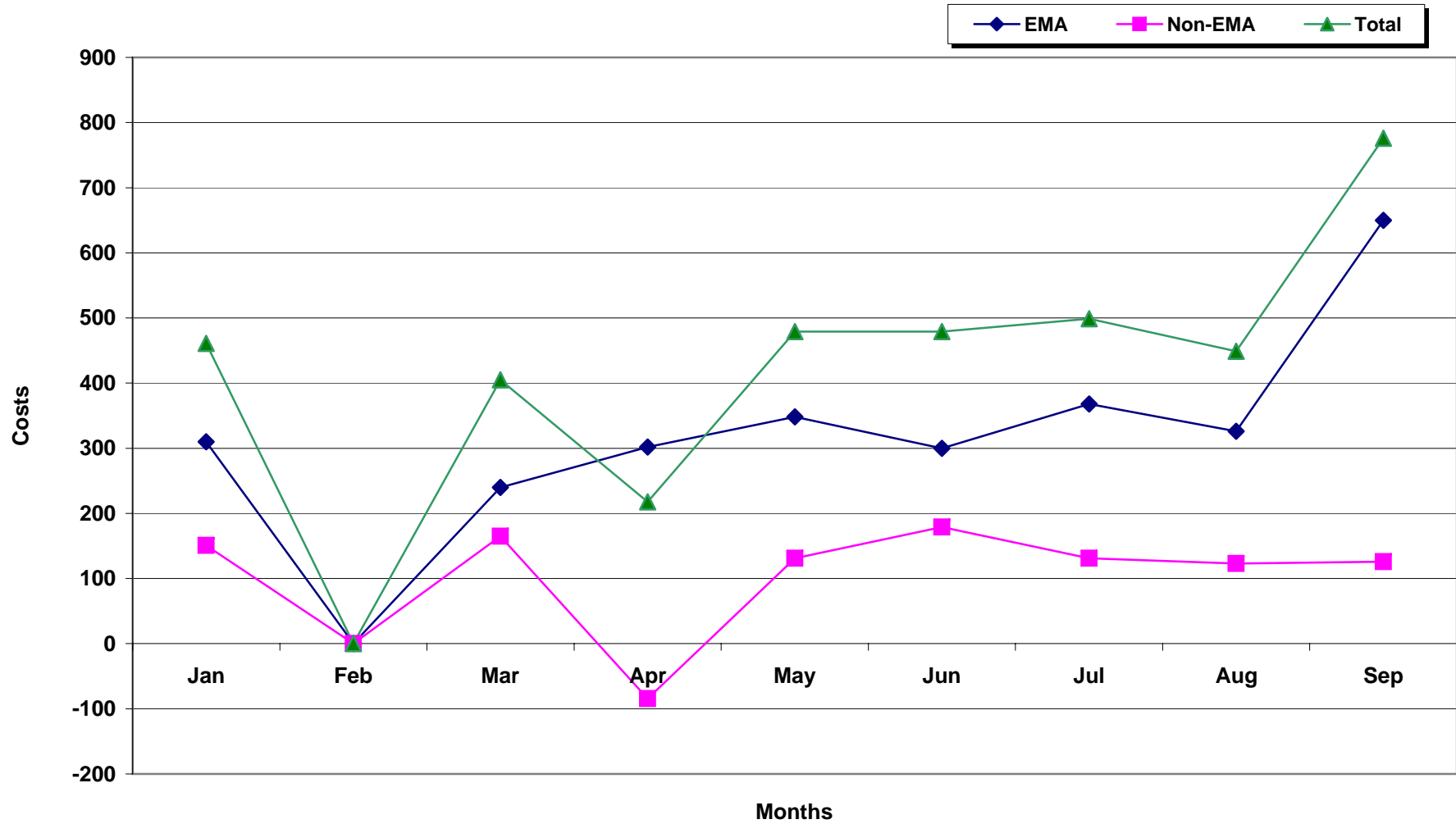
	Jan	Feb	Mar	Apr	May	Jun	Jul	Aug	Sep	Oct	Nov	Dec	Total	% of Total
<b>EMA</b>	310.00	0.00	240.00	302.00	348.00	300.00	368.00	326.00	650.00				2,844.00	75.5%
<b>Non-EMA</b>	151.00	0.00	165.00	-84.27	131.00	179.00	131.00	123.00	126.00				921.73	24.5%
<b>Total</b>	461.00	0.00	405.00	217.73	479.00	479.00	499.00	449.00	776.00	0.00	0.00	0.00	3,765.73	100.0%

**Table 2B: GROUP II Number of Clients Receiving Premium Payments by Month of Service**

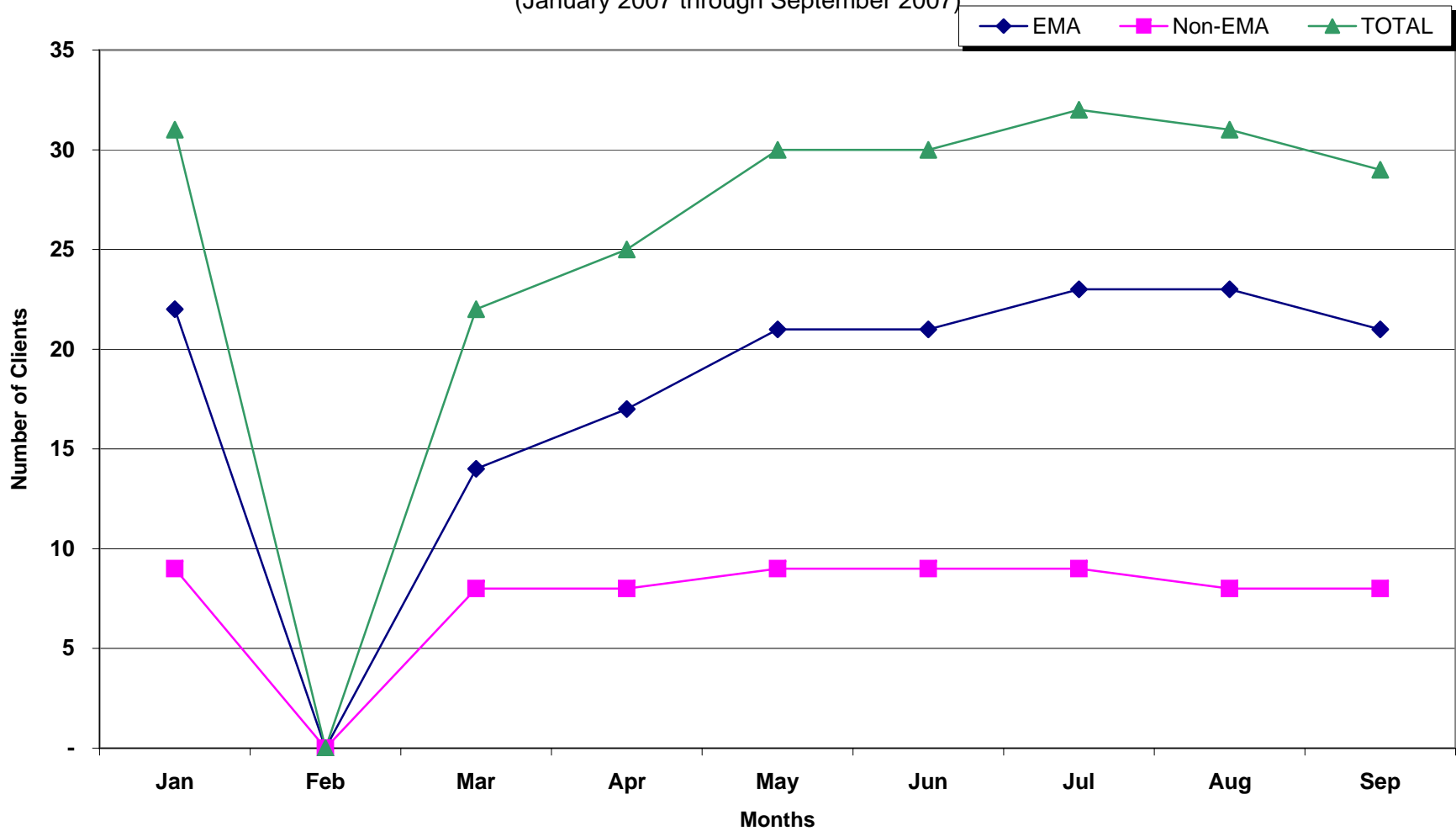
Clients	Jan	Feb	Mar	Apr	May	Jun	Jul	Aug	Sep	Oct	Nov	Dec	Total	% of Total
<b>EMA</b>	22	0	14	17	21	21	23	23	21				29	74.4%
<b>Non-EMA</b>	9	0	8	8	9	9	9	8	8				10	25.6%
<b>TOTAL</b>	31	0	22	25	30	30	32	31	29	0	0	0	39	100.0%

NOTE: Clients may have more than one monthly premium paid in the month of service

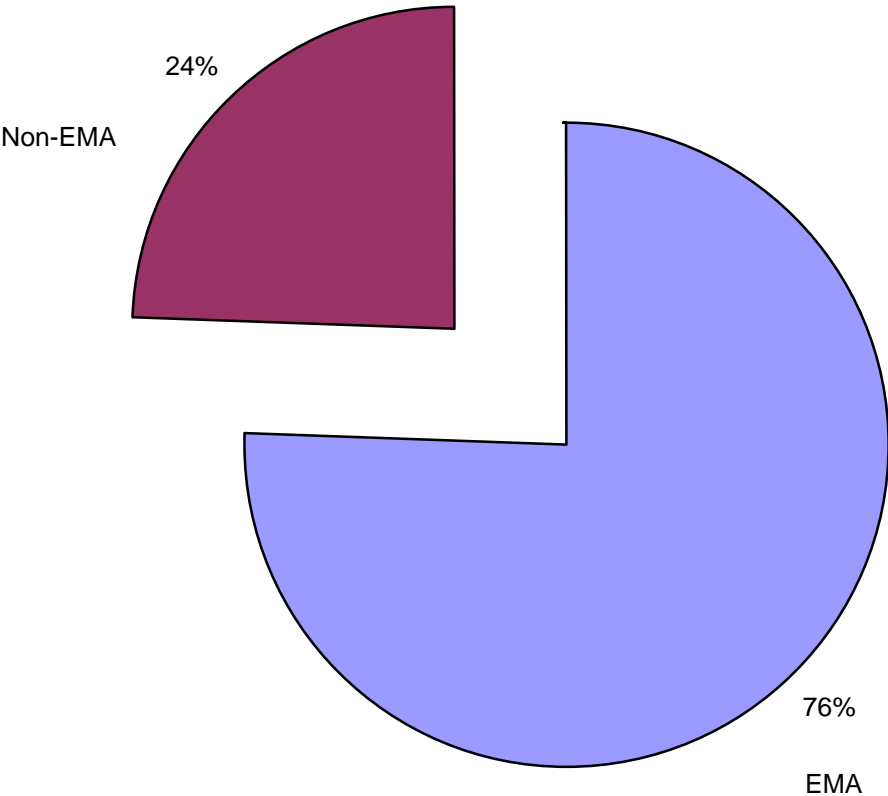
CAREAssist GROUP II  
Cost for Premium Payments by Month of Service through 3rd quarter CY2007  
(January 2007 through September 2007)



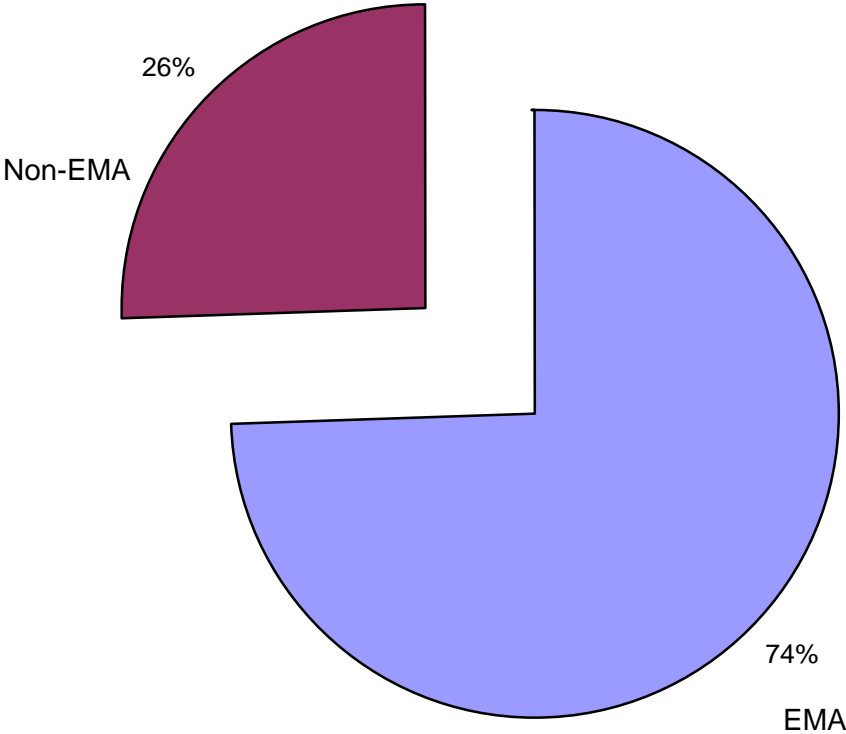
CAREAssist GROUP II  
Clients Receiving Premium Payments by Month of Service through 3rd quarter CY2007  
(January 2007 through September 2007)



CAREAssist Group II Costs for Premium Payments through 3rd quarter of CY2007:  
Percentage for EMA and Non-EMA



CAREAssist 39 Group II Clients Receiving Premium Payments  
through 3rd quarter of CY2007:  
Percentage in EMA and Non-EMA



**Oregon CAREAssist Program: GROUP II - Medication Assistance**  
**3rd quarter of Calendar Year 2007 - January 2007 through September 2007**

**Table 3A: GROUP II Costs for Medication Assistance by Month of Service**

	Jan	Feb	Mar	Apr	May	Jun	Jul	Aug	Sep	Oct	Nov	Dec	Total	% of Total
<b>EMA</b>	36.80	32.00	0.00	16.00	40.00	32.00	48.00	192.00	16.00				412.80	17.3%
<b>Non-EMA</b>	0.00	72.00	168.00	234.00	439.50	203.50	136.00	586.19	135.00				1,974.19	82.7%
<b>Total</b>	36.80	104.00	168.00	250.00	479.50	235.50	184.00	778.19	151.00	0.00	0.00	0.00	2,386.99	100.0%

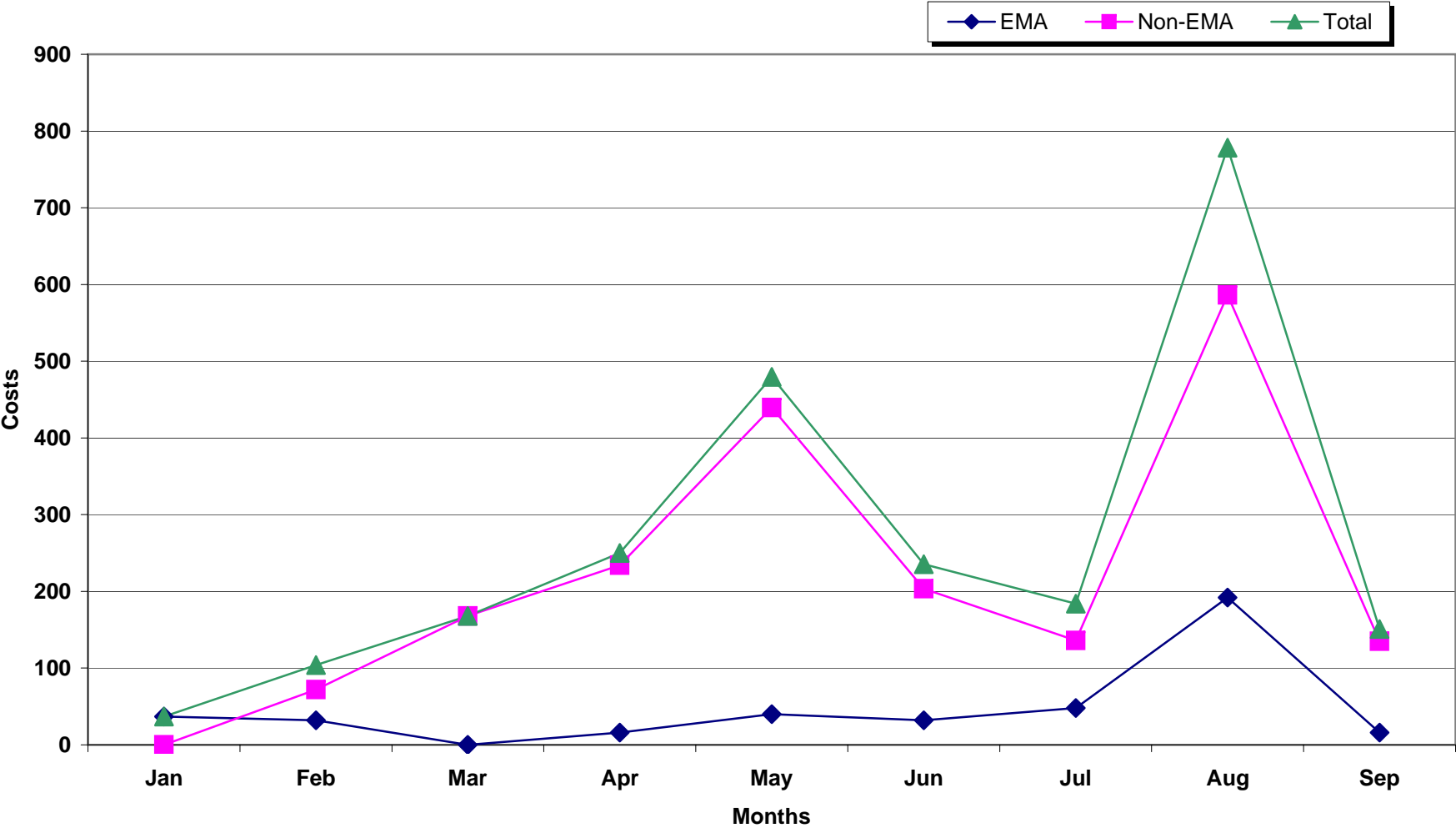
**Table 3B: GROUP II Number of Clients Receiving Medication Assistance by Month of Service**

	Jan	Feb	Mar	Apr	May	Jun	Jul	Aug	Sep	Oct	Nov	Dec	Total	% of Total
<b>EMA</b>	1	1	0	1	2	1	1	1	1				3	42.9%
<b>Non-EMA</b>	0	1	1	2	3	2	2	3	2				4	57.1%
<b>TOTAL</b>	1	2	1	3	5	3	3	4	3	0	0	0	7	100.0%

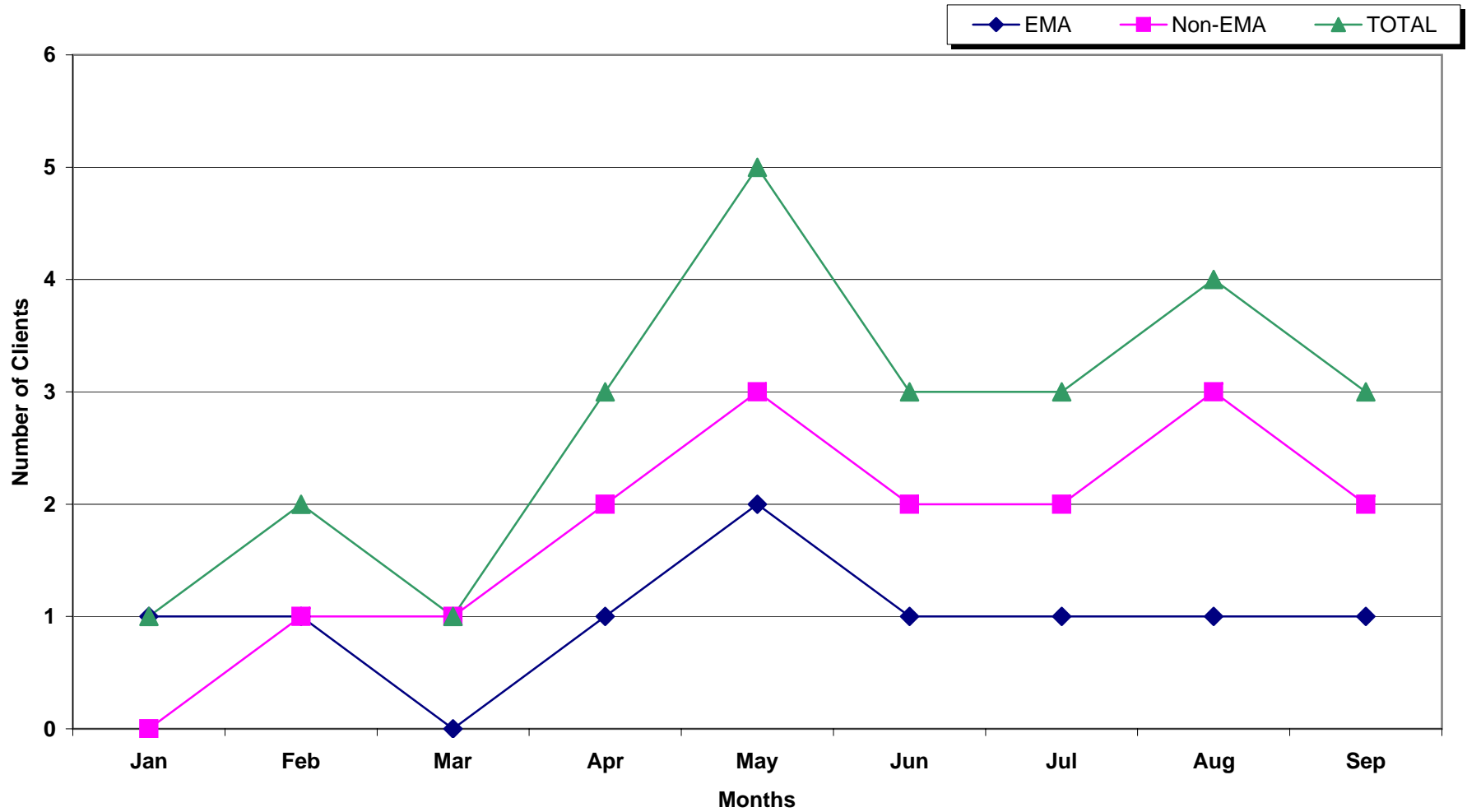
Notes:

- 1) Partial cost data for last two months reported because of the lag time in submission of billings for medications and medical co-pays.
- 2) There may be small adjustments in the data for late billings and/or refunds posted throughout the year.

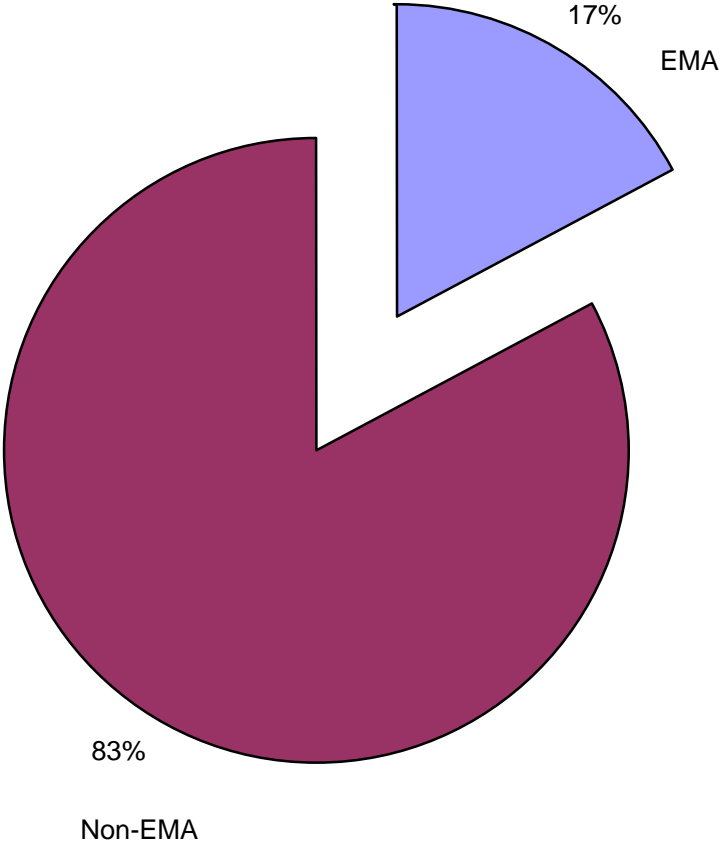
CAREAssist GROUP II  
Costs for Medication Assistance through 3rd quarter of CY2007  
(January 2007 to September 2007)



CAREAssist GROUP II  
Clients Receiving Medication Assistance through 3rd quarter of CY2007  
(January 2007 to September 2007)



CAREAssist GROUP II Medication Assistance through 3rd quarter of CY2007:  
Percentage for EMA and Non-EMA



CAREAssist 7 GROUP II Clients Receiving Medication Assistance through  
3rd quarter of CY2007:  
Percentage by EMA and Non-EMA  
only VA clients are eligible for Rx in GROUP II

