

**Oregon CAREAssist Program: GROUP I ALL SERVICES - Premium Payments, Medication Assistance and Medical Co-Pays**

3rd quarter of Calendar Year 2007 - January 2007 through September 2007

**Table 1A: Oregon Total GROUP I Costs by Month of Service for Premium Payments, Medication Assistance and Medical Co-Pays**

Costs	Jan	Feb	Mar	Apr	May	Jun	Jul	Aug	Sep	Oct	Nov	Dec	Total	% of Total
EMA	387,995.22	341,639.29	361,272.15	367,236.57	343,601.02	339,654.08	390,171.31	360,750.56	358,143.65	-	-	-	3,250,463.85	72.6%
Non-EMA	150,643.45	129,286.79	143,996.44	132,616.79	127,005.21	135,540.72	144,389.79	130,808.67	133,257.12	-	-	-	1,227,544.98	27.4%
<b>TOTAL</b>	<b>538,638.67</b>	<b>470,926.08</b>	<b>505,268.59</b>	<b>499,853.36</b>	<b>470,606.23</b>	<b>475,194.80</b>	<b>534,561.10</b>	<b>491,559.23</b>	<b>491,400.77</b>	<b>-</b>	<b>-</b>	<b>-</b>	<b>4,478,008.83</b>	<b>100.0%</b>

**Table1B: Oregon Total GROUP I Unduplicated Number of Clients by Month of Service Receiving- Premium Payments, Medication Assistance and Medical Co-Pays**

Clients	Jan	Feb	Mar	Apr	May	Jun	Jul	Aug	Sep	Oct	Nov	Dec	Total	% of Total
EMA	940	948	954	961	961	970	980	987	999				1164	71.0%
Non-EMA	376	383	386	391	389	385	383	385	391				476	29.0%
<b>TOTAL</b>	<b>1,316</b>	<b>1,331</b>	<b>1,340</b>	<b>1,352</b>	<b>1,350</b>	<b>1,355</b>	<b>1,363</b>	<b>1,372</b>	<b>1,390</b>	<b>0</b>	<b>0</b>	<b>0</b>	<b>1640</b>	<b>100.0%</b>

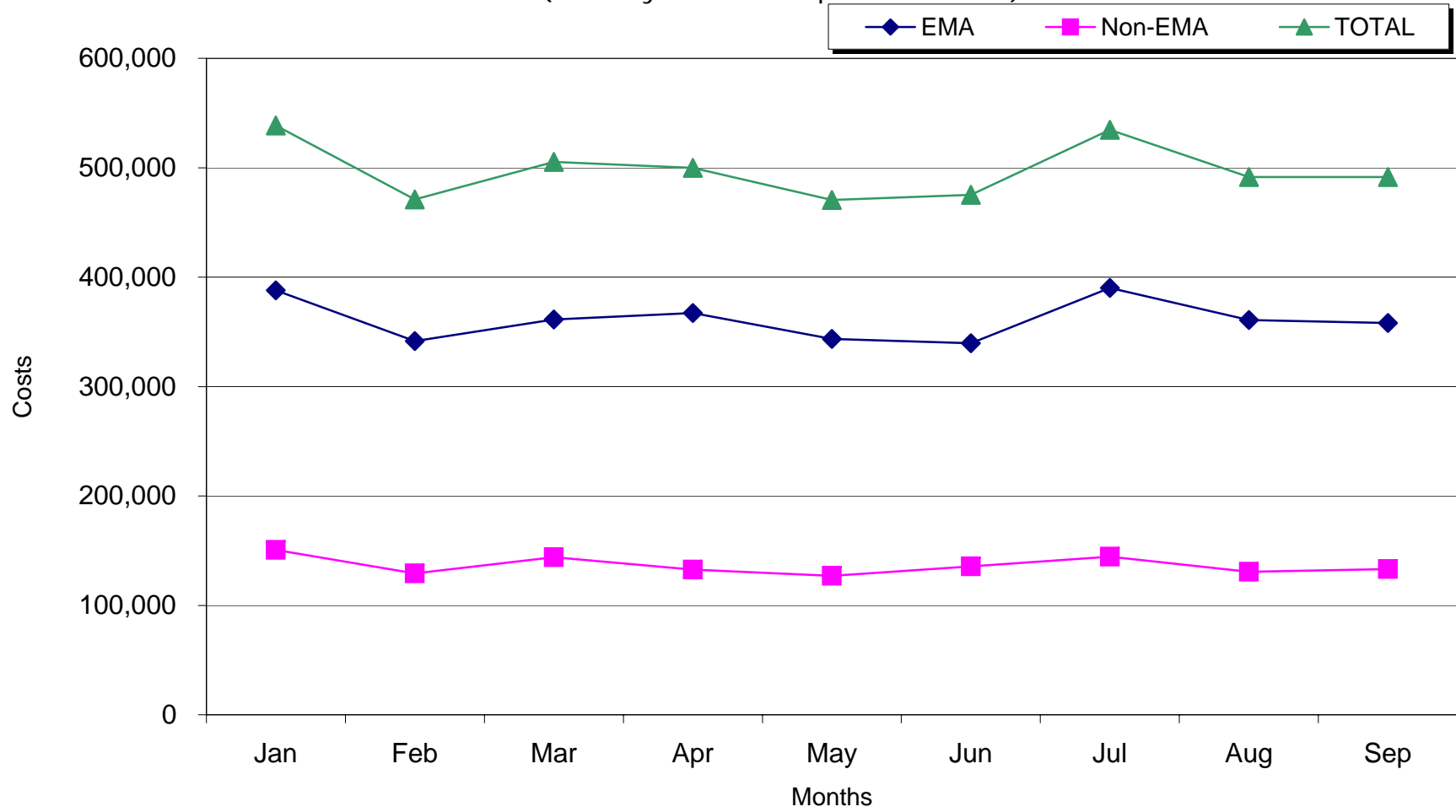
**Number of distinct clients enrolled in Group I**

Clients	Jan	Feb	Mar	Apr	May	Jun	Jul	Aug	Sep	Oct	Nov	Dec	Total
Clients	1,381	1,410	1,416	1,426	1,443	1,450	1,455	1,480	1,498				1703

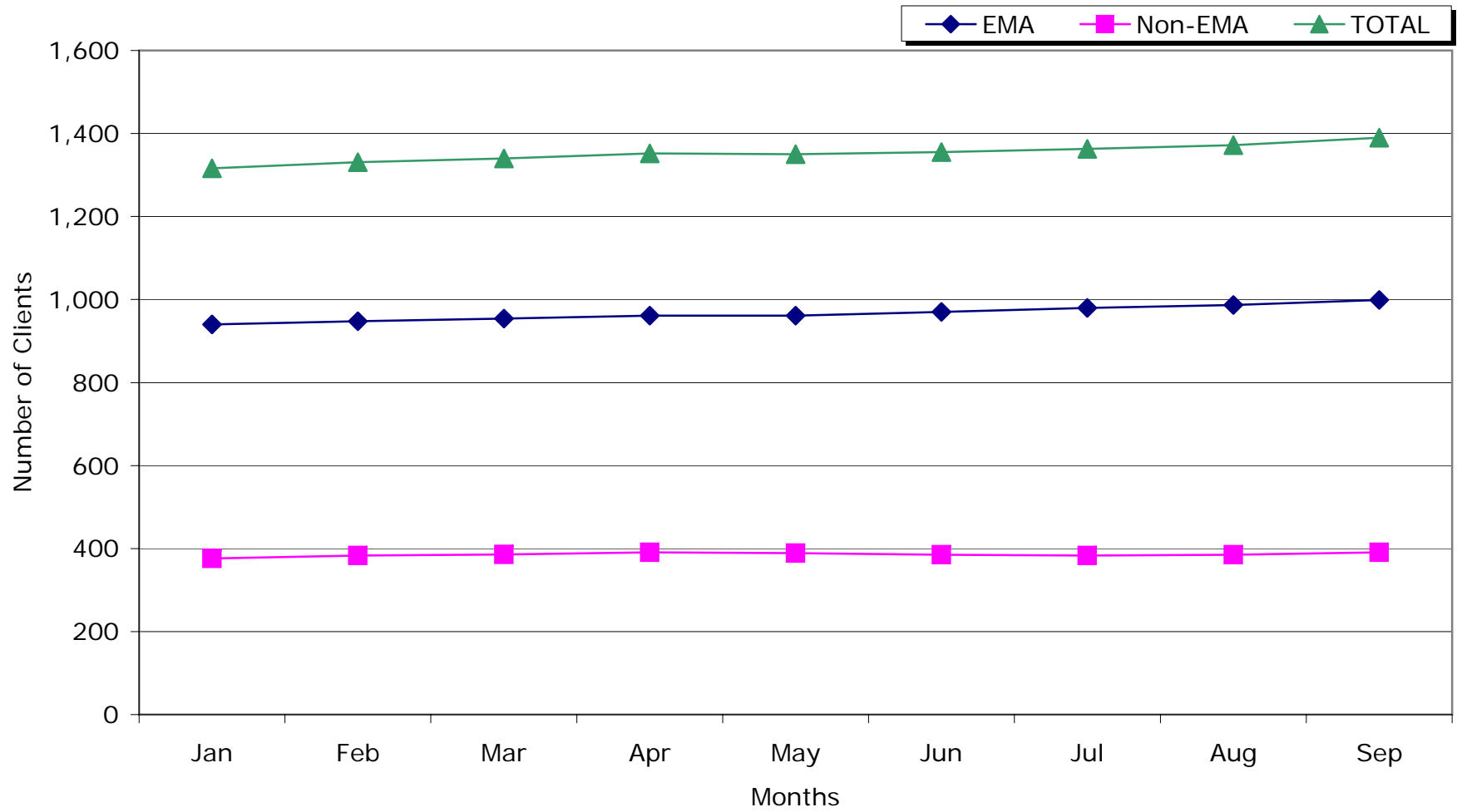
Notes:

- 1) Partial cost data for last two months reported because of the lag time in submission of billings for medications and medical co-pays.
- 2) There may be small adjustments in the data for late billings and/or refunds posted throughout the year.

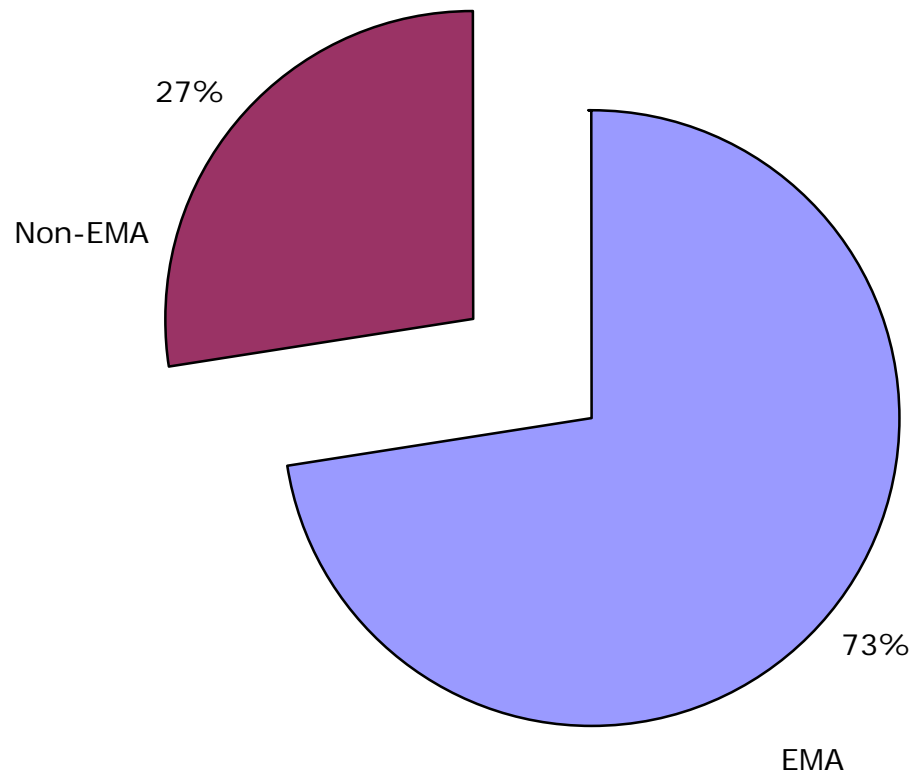
CAREAssist GROUP I  
Total Cost by Month of Service - 3rd quarter CY2007  
(January 2007 to September 2007)



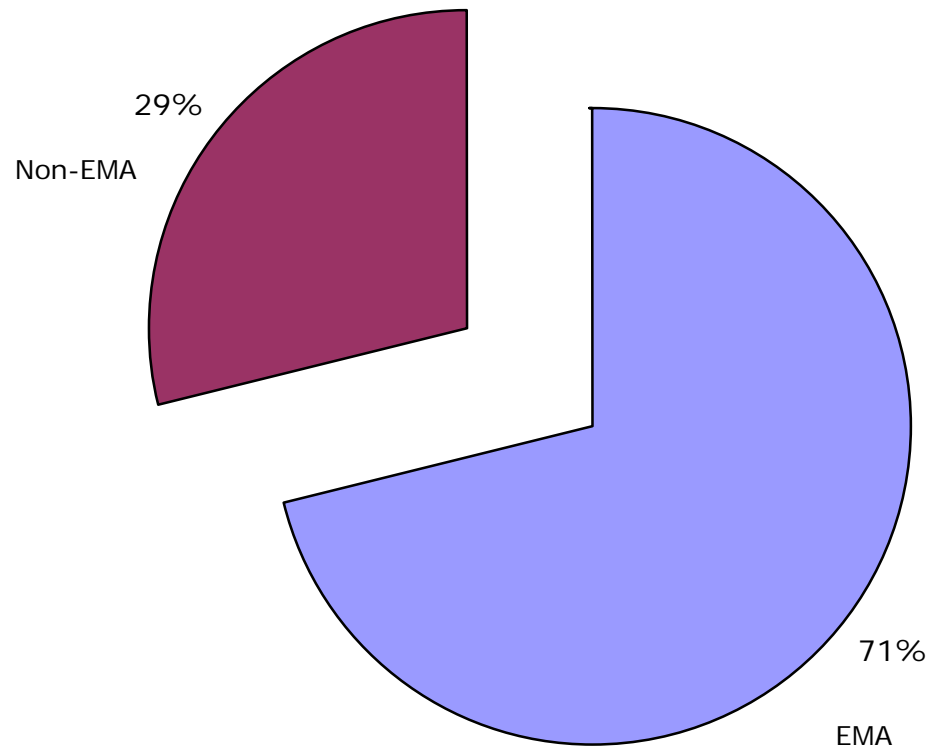
CAREAssist GROUP I  
Total Clients by Month of Service 3rd quarter CY2007  
(January 2007 to September 2007)



CAREAssist GROUP I Total Cost through rd quarter of CY2007:  
Percentage for EMA and Non-EMA



CAREAssist Total 1,640 GROUP I Clients by Month of Service through 3rd quarter of CY2007:  
Percentage in EMA and Non-EMA



**Oregon CAREAssist Program: GROUP I - Premium Payments**  
**3rd quarter of Calendar Year 2007 - January 2007 through September 2007**

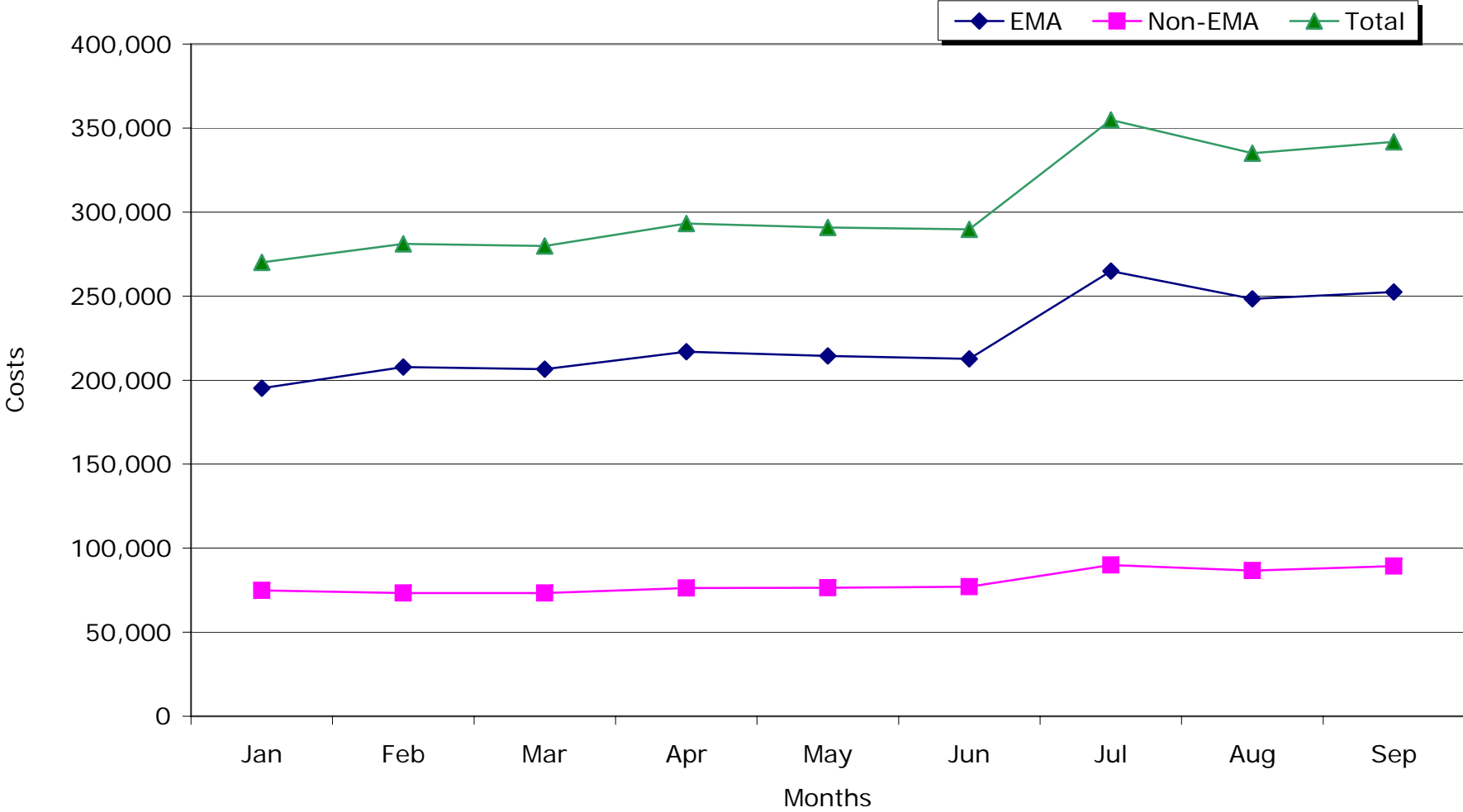
**Table 2A: Oregon CAREAssist GROUP I Premium Payments by Month of Service**

	Jan	Feb	Mar	Apr	May	Jun	Jul	Aug	Sep	Oct	Nov	Dec	Total	% of Total
<b>EMA</b>	195,250.15	207,762.30	206,517.96	216,882.28	214,390.38	212,662.71	264,885.26	248,384.19	252,420.85				2,019,156.08	73.8%
<b>Non-EMA</b>	74,863.55	73,260.68	73,318.18	76,342.85	76,432.10	77,126.85	89,999.06	86,677.76	89,348.95				717,369.98	26.2%
<b>Total</b>	270,113.70	281,022.98	279,836.14	293,225.13	290,822.48	289,789.56	354,884.32	335,061.95	341,769.80	0.00	0.00	0.00	2,736,526.06	100.0%

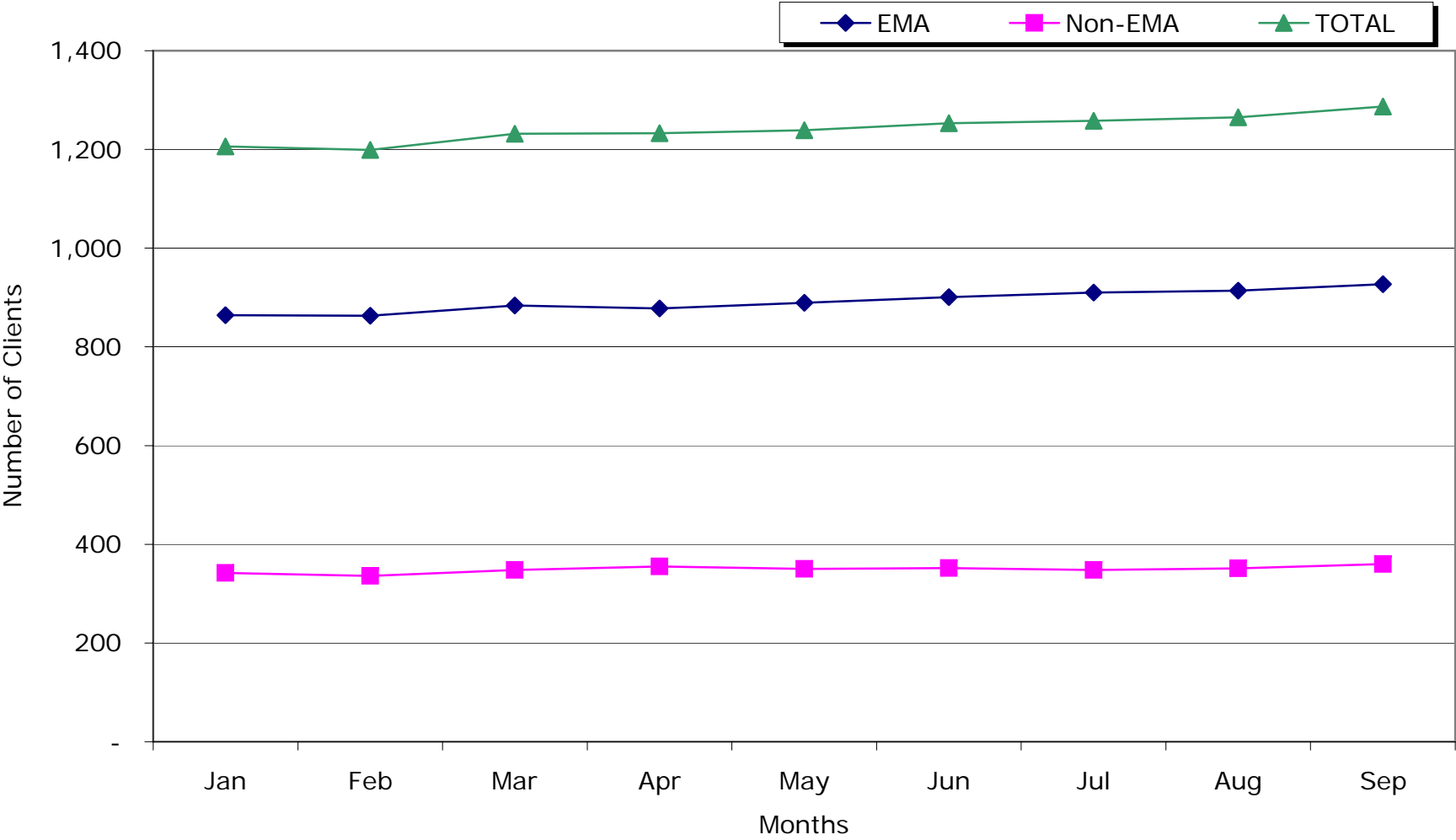
**Table 2B: Oregon GROUP I Number of Clients Receiving Premium Payments by Month of Service**

Clients	Jan	Feb	Mar	Apr	May	Jun	Jul	Aug	Sep	Oct	Nov	Dec	Total	% of Total
<b>EMA</b>	864	863	884	878	889	901	910	914	927				1068	71.6%
<b>Non-EMA</b>	342	336	348	355	350	352	348	351	360				423	28.4%
<b>TOTAL</b>	1,206	1,199	1,232	1,233	1,239	1,253	1,258	1,265	1,287	0	0	0	1491	100.0%

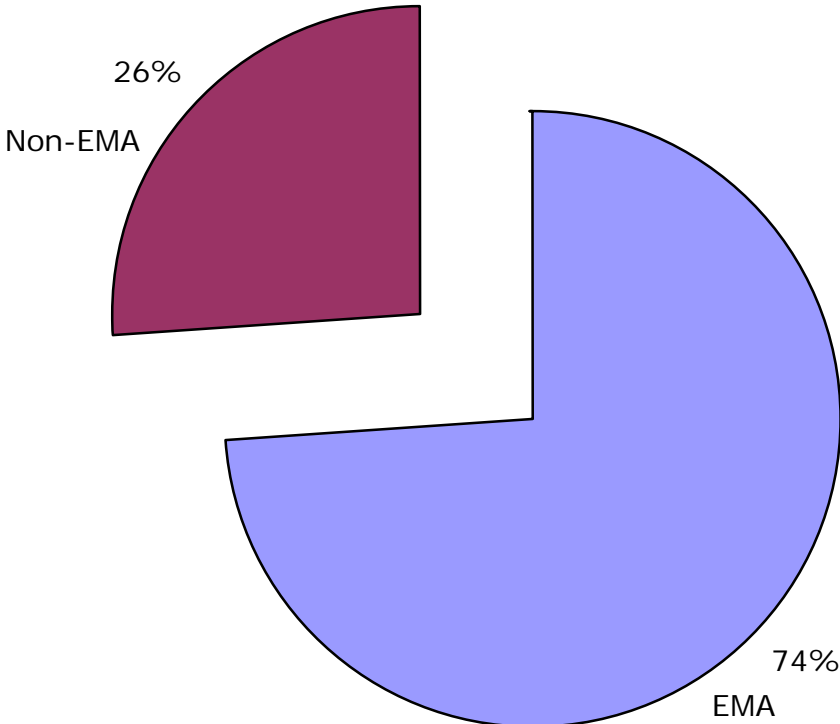
CAREAssist GROUP I  
Cost for Premium Payments through 3rd quarter of CY2007  
(January 2007 to September 2007)



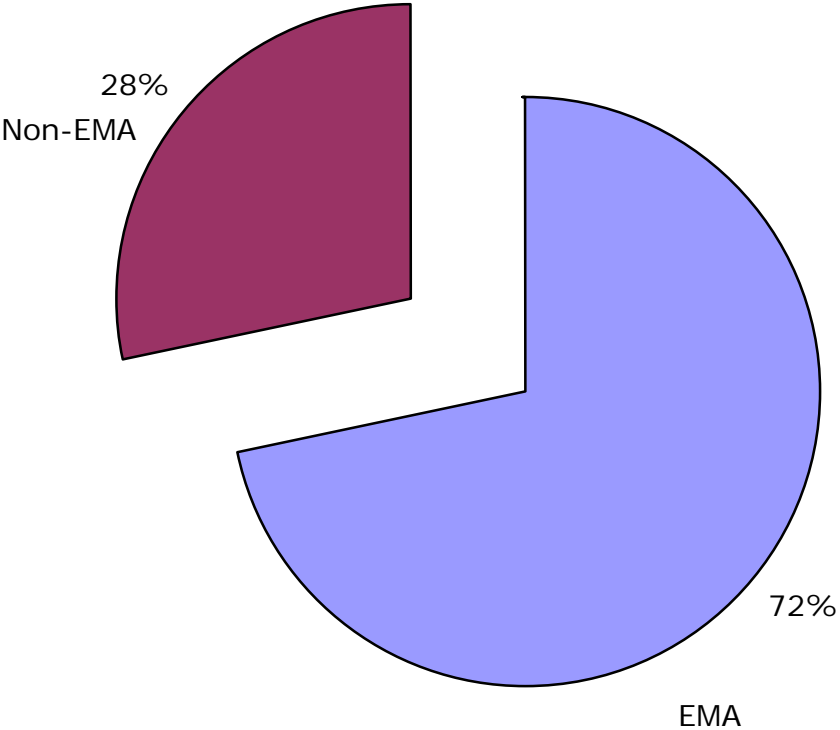
CAREAssist GROUP I  
Clients Receiving Premium Payments through 3rd quarter of CY2007  
(January 2007 to September 2007)



CAREAssist GROUP I - Cost for Premium Payments through 3rd quarter of CY2007: Percentage for EMA and Non-EMA



CAREAssist 1,287 GROUP I Clients Receiving Premium Payments through  
3rd quarter of CY2007:  
Percentage in EMA and Non-EMA



**Oregon CAREAssist Program: GROUP I - Medication Assistance**  
**2nd quarter of Calendar Year 2007 - January 2007 through June 2007**

**Table 3A: Oregon CAREAssist GROUP I Medication Assistance by Month of Service**

	Jan	Feb	Mar	Apr	May	Jun	Jul	Aug	Sep	Oct	Nov	Dec	Total	% of Total
<b>EMA</b>	117,273.53	96,979.42	119,997.33	119,079.66	96,195.42	100,727.16	99,102.48	91,478.08	93,344.25				934,177.33	71.9%
<b>Non-EMA</b>	40,210.00	37,546.57	54,305.69	41,068.31	35,509.29	45,115.42	41,635.15	34,905.82	35,668.94				365,965.19	28.1%
<b>Total</b>	157,483.53	134,525.99	174,303.02	160,147.97	131,704.71	145,842.58	140,737.63	126,383.90	129,013.19	0.00	0.00	0.00	1,300,142.52	100.0%

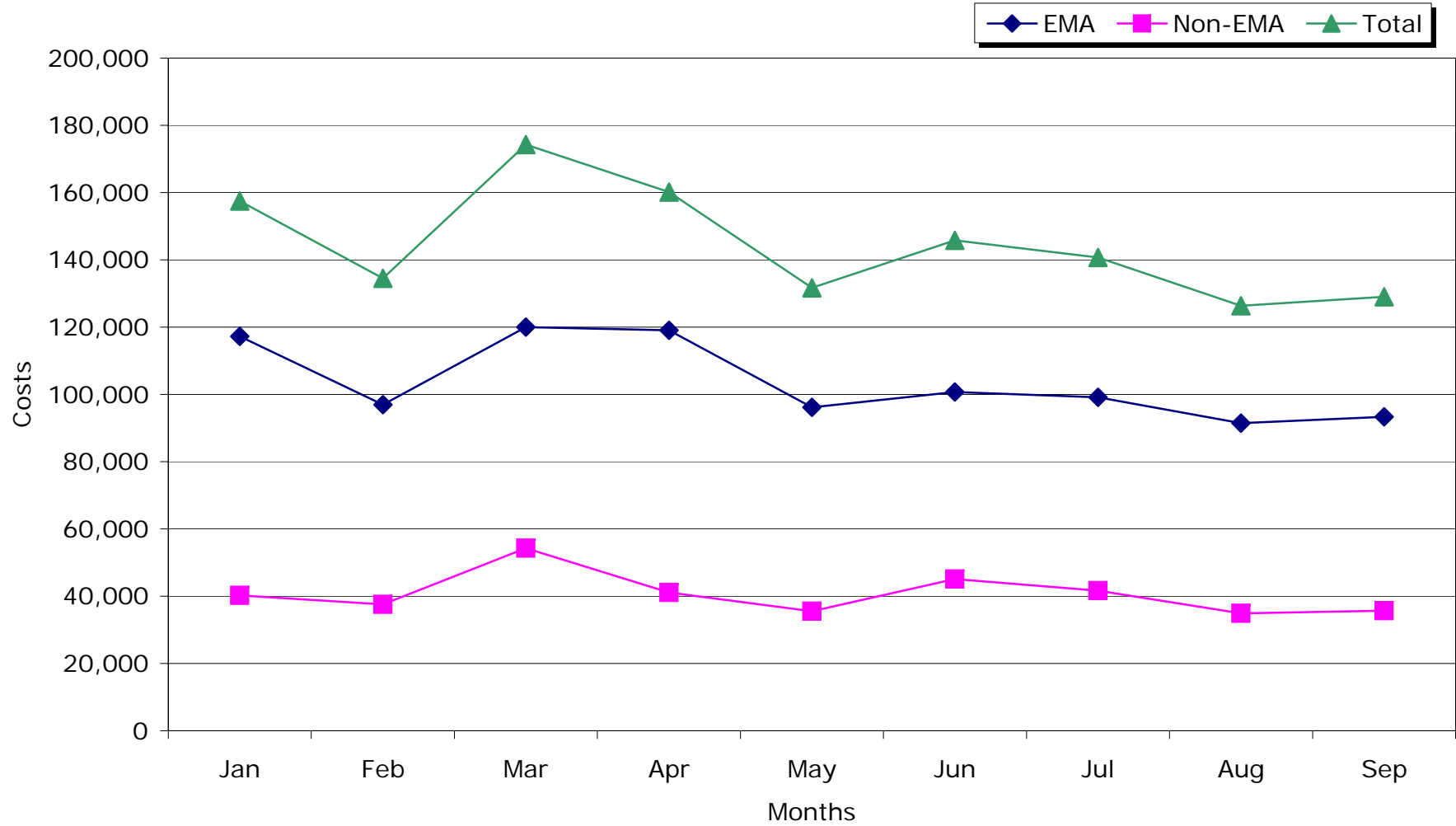
**Table 3B: Oregon GROUP I Number of Clients Receiving Medication Assistance by Month of Service**

	Jan	Feb	Mar	Apr	May	Jun	Jul	Aug	Sep	Oct	Nov	Dec	Total	% of Total
<b>EMA</b>	712	697	713	746	718	716	734	734	732				1006	71.0%
<b>Non-EMA</b>	273	267	274	282	270	282	263	279	272				410	29.0%
<b>TOTAL</b>	985	964	987	1,028	988	998	997	1,013	1,004	0	0	0	1416	100.0%

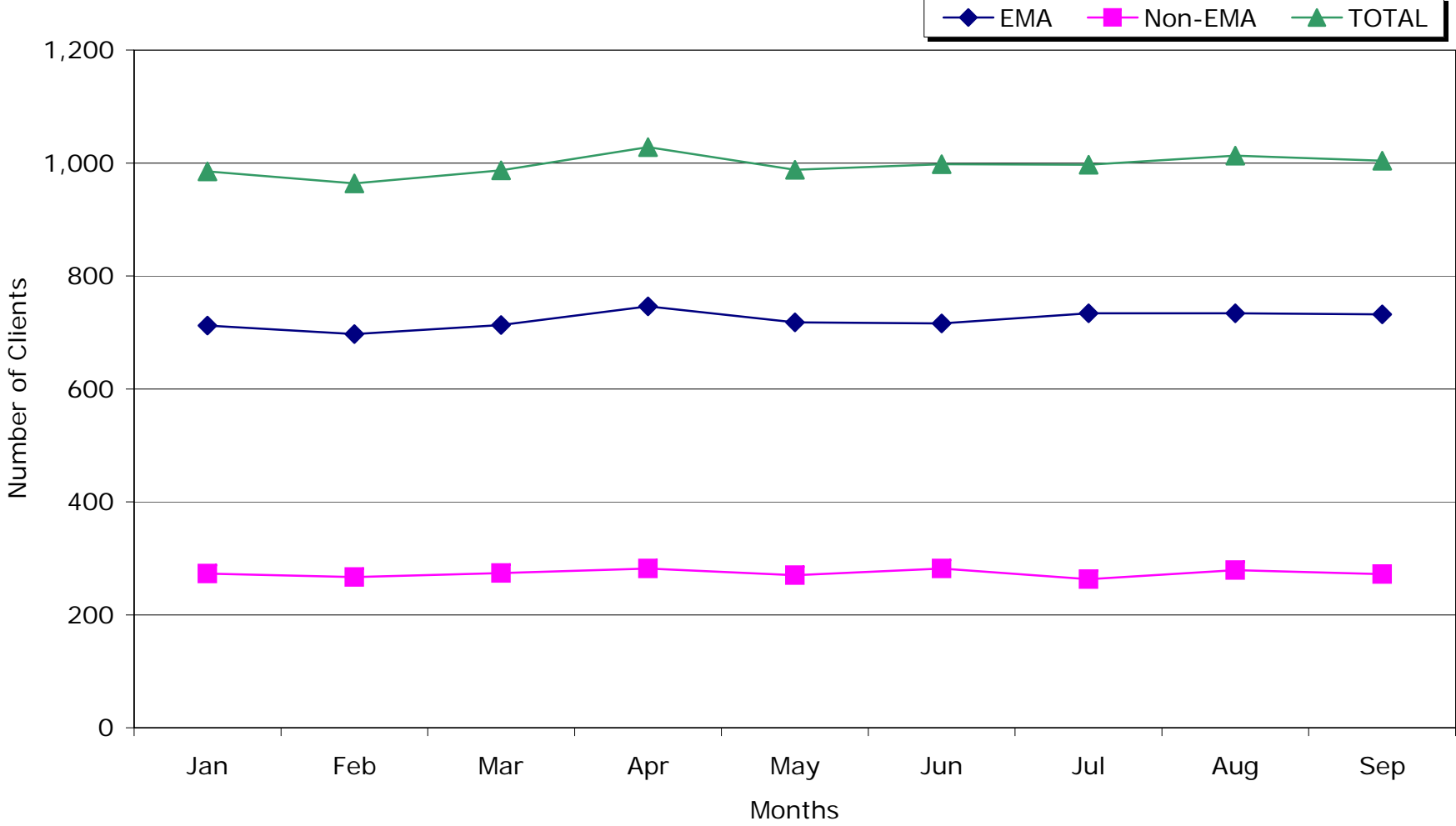
Notes:

- 1) Partial cost data for last two months reported because of the lag time in submission of billings for medications and medical co-pays.
- 2) There may be small adjustments in the data for late billings and/or refunds posted throughout the year.

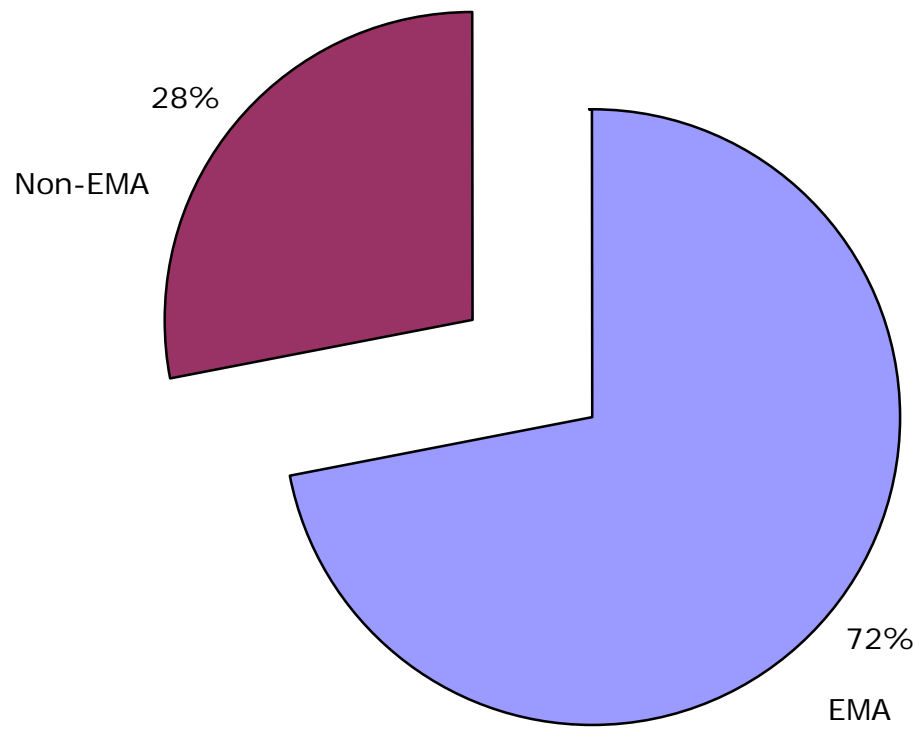
CAREAssist GROUP 1  
Costs for Medication Assistance through 3rd quarter of CY2007:  
(January 2007 to September 2007)



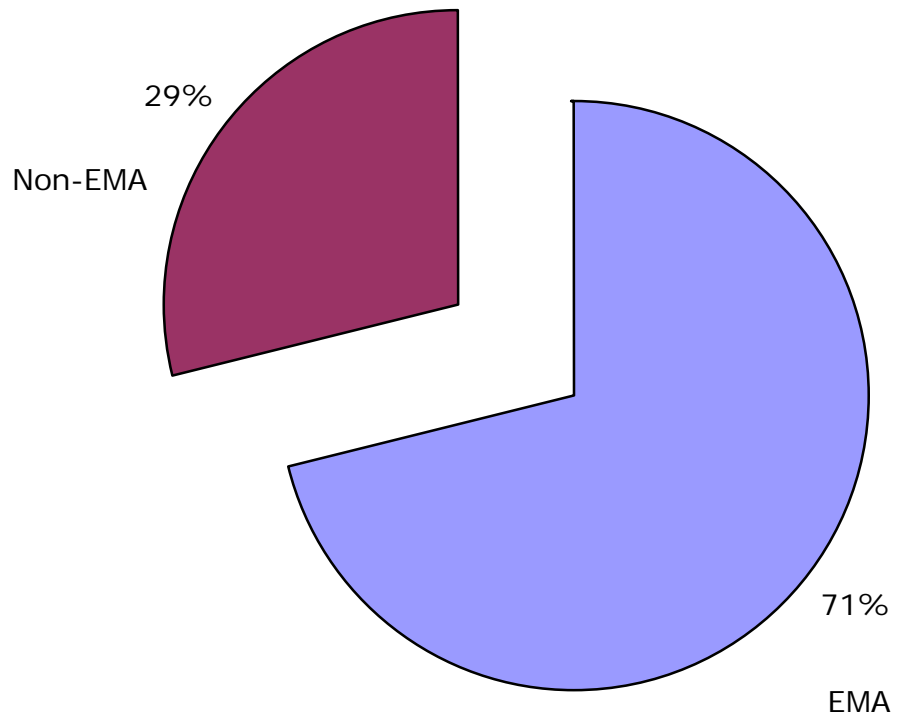
CAREAssist GROUP I  
Clients Receiving Medications Assistance through 3rd quarter of CY2007:  
(January 2007 to September 2007)



CAREAssist GROUP I Medication Costs through 3rd quarter of CY2007: Percentage for EMA and Non-EMA



CAREAssist 1,416 GROUP I Clients Receiving Medication Assistance through  
3rd quarter of CY2007:  
Percentage in EMA and Non-EMA



**Oregon CAREAssist Program: GROUP I - Medical Co-Pays**  
**3rd quarter of Calendar Year 2007 - January 2007 through September 2007**

**Table 4A: GROUP I Medical Co-Pays by Month of Service**

	Jan	Feb	Mar	Apr	May	Jun	Jul	Aug	Sep	Oct	Nov	Dec	Total	% of Total
<b>EMA</b>	75,471.54	36,897.57	34,756.86	31,274.63	33,015.22	26,264.21	26,183.57	20,888.29	12,378.55				297,130.44	67.3%
<b>Non-EMA</b>	35,569.90	18,479.54	16,372.57	15,205.63	15,063.82	13,298.45	12,755.58	9,225.09	8,239.23				144,209.81	32.7%
<b>TOTAL</b>	111,041.44	55,377.11	51,129.43	46,480.26	48,079.04	39,562.66	38,939.15	30,113.38	20,617.78	0.00	0.00	0.00	441,340.25	100.0%

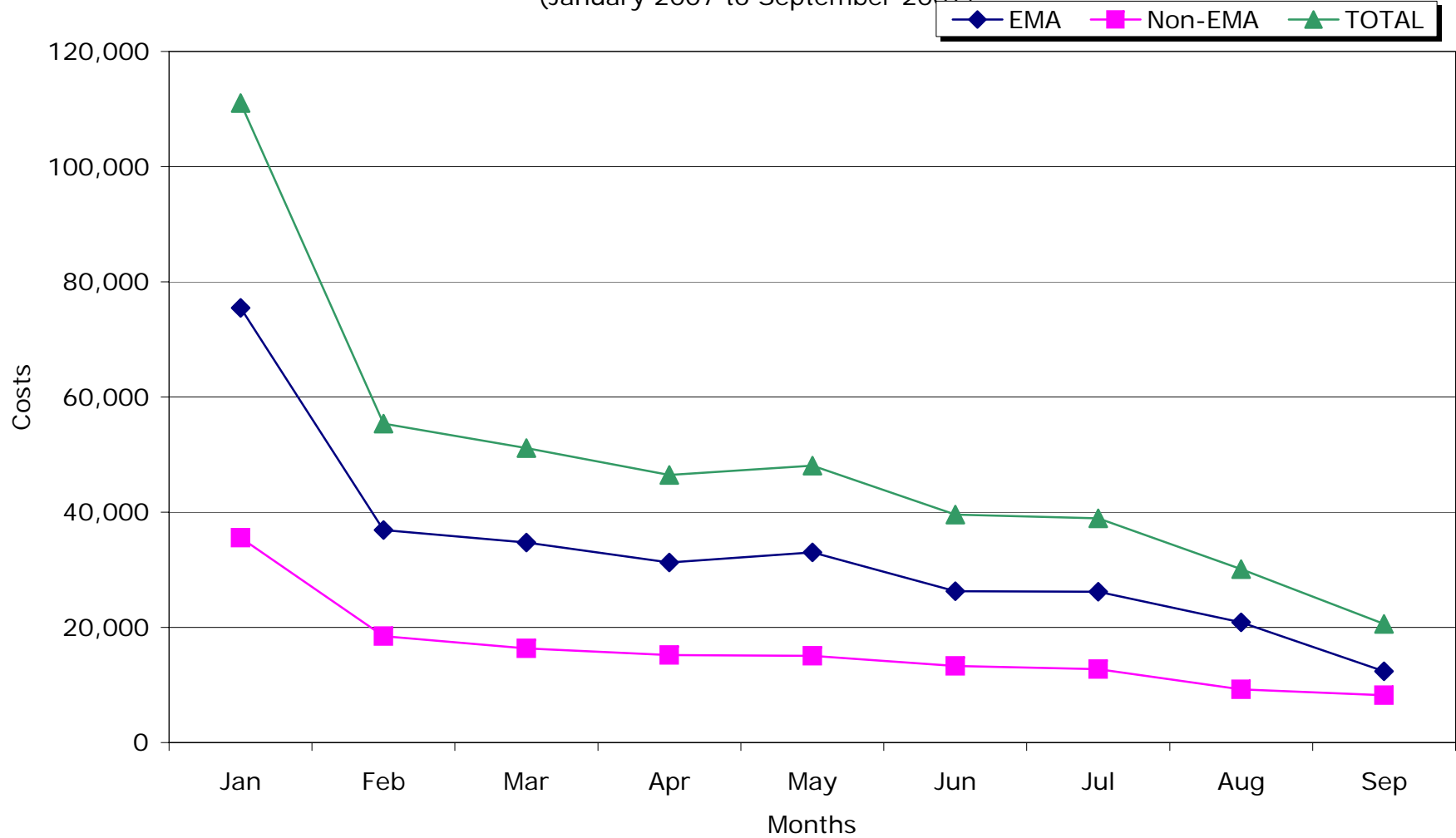
**Table 4B: GROUP I Number of Clients Receiving Medical Co-Pays by Month of Service**

	Jan	Feb	Mar	Apr	May	Jun	Jul	Aug	Sep	Oct	Nov	Dec	Total	% of Total
<b>EMA</b>	277	200	196	203	227	212	215	191	152				649	69.9%
<b>Non-EMA</b>	124	104	96	106	117	101	94	81	80				279	30.1%
<b>TOTAL</b>	401	304	292	309	344	313	309	272	232	0	0	0	928	100.0%

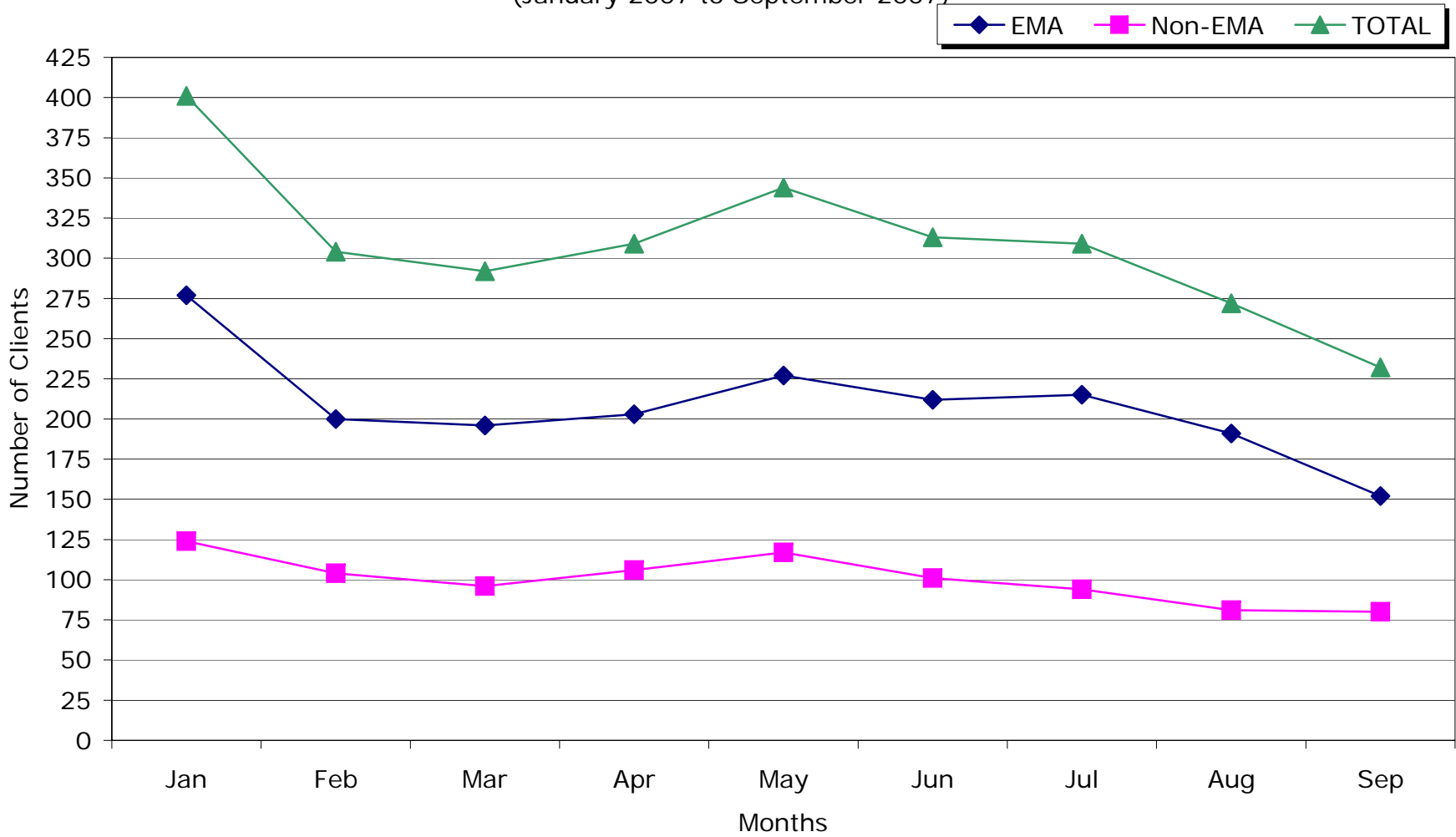
Notes:

- 1) Partial cost data for last two months reported because of the lag time in submission of billings for medications and medical co-pays.
- 2) There may be small adjustments in the data for late billings and/or refunds posted throughout the year.

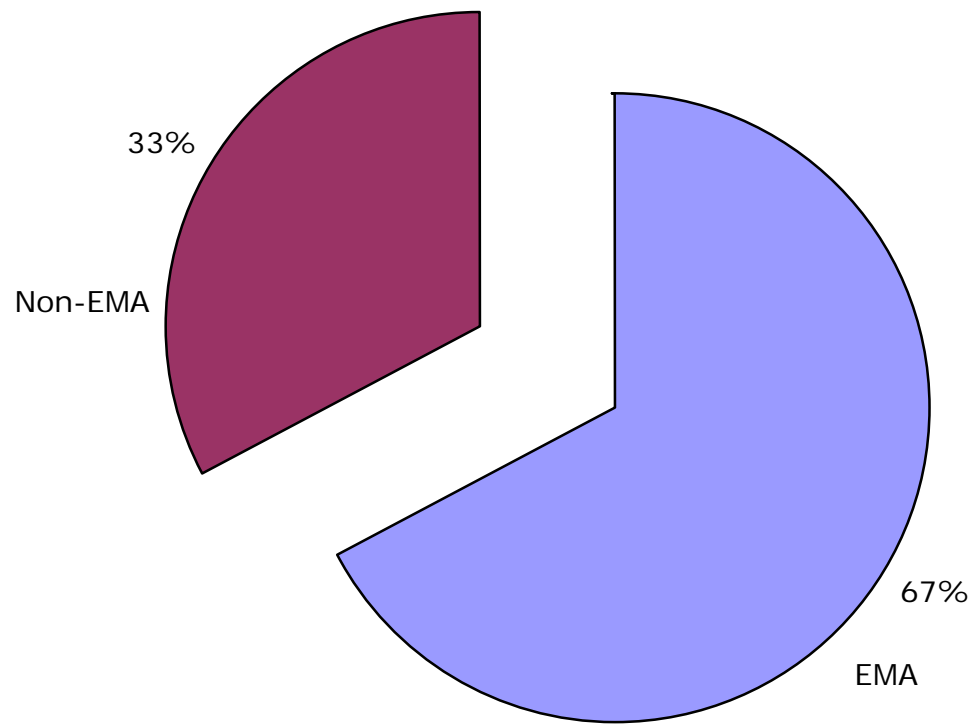
CAREAssist GROUP I  
Cost for Medical Co-Pays by Month of Service through 3rd quarter of CY2007:  
(January 2007 to September 2007)



CAREAssist GROUP I  
Clients Receiving Medical Co-Pays by Month of Service through 3rd qtr of CY2007  
(January 2007 to September 2007)



CAREAssist GROUP I Cost for Medical Co-Pays through 3rd quarter of CY2007:  
Percentage for EMA and Non-EMA



CAREAssist 928 GROUP I Clients Receiving Medical Co-Pays through  
3rd quarter of CY2007:  
Percentage in EMA and Non-EMA

