



CPMS¹ Messenger

a timely newsletter for those completing the CPMS forms

February 2009

Prepared by Piet Vermeer & the CPMS Data Team, AMH

Vol. 16, No. 2

Questions? Give us a call

Dianna Bernards

503-945-6186
MH CMHPs 12-19
dianna.m.bernards@state.or.us



Bonnie Landers

503-945-6188
A&D CMHPs 1-9, 21-25
bonnie.h.landiers@state.or.us

Mary Herrle

503-945-6673
A&D CMHPs 26-27
MH CMHPs 1-10, 26
mary.c.herrle@state.or.us

Stan Usher

503-945-5891
A&D CMHPs, 10-19, 29-39
MH CMHPs 29-75
stan.usher@state.or.us

Cecelia Labi

503-945-5764
A&D CMHPs, 20
MH CMHPs 20-25, 27
cecelia.labi@state.or.us

Special Addiction Monthly Management Report!

Last September of 2008 the Chemical Dependency Treatment Providers received an MMR (Monthly Management Report) that was different from the usual report. It had asterisks * on it to indicate that a client episode of treatment lasted longer than 3 years.

With the exception of Methadone Maintenance, which was excluded from the * notations, this is a very long time for a treatment episode and usually an error in reporting. In order to clean up these errors in the CPMS data system, we created the special MMR and asked you to report to us on those episodes that are actually lasting longer than 3-years. We will "flag" these episodes to indicate that they are an exception to the rule.

Within the next few months we are going to generically close all client episodes open longer than 3-year that are not flagged for exception. Please take a good hard look at your MMR report and let us know if there is anything in it that is incorrect.

This special report will help our organization to enhance the quality of our data. With improved data we can create financial reports that will help our leaders within our organization and on State and Federal levels to get a better understanding and make informed decisions about funding Chemical Dependency Treatment.

Who are you going to call?

Our data unit uses addresses and names and phone numbers in order to contact a provider to solve a problem. This information is not always correct. Please let us know if someone leaves or numbers or addresses change.



¹ Client Process Monitoring System (data system for mental health and chemical dependency treatment services).

FREE CPMS E-FORM TODAY!

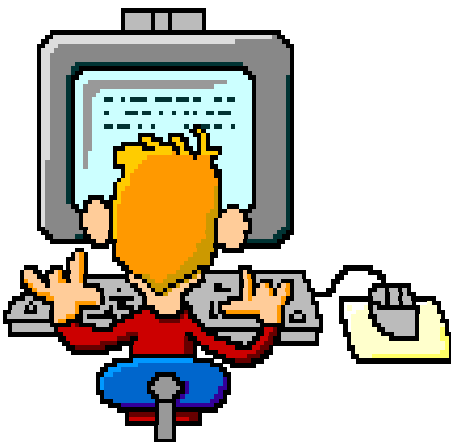
No more clutter, no more carbon paper, no more ink on your hands, no more AMH Data unit person complaining about forms filled out incorrectly, no more phone calls, no more faxing back and forth, because you use:

The **E-FORM**.

Built-in form print capability, built in edit's, installs in 5 seconds, can be installed on a network and several people can work on the same system at the same time.

Did you know that the E-FORM is superfast? If you send in the export file before 4:00 PM, your data is processed overnight and in the system the next morning.

This will make your Monthly Management Information Report more exact, more up to date and more in tune with what is going on at your facility.



BHIP Update

(By Janelle Jeggliie, BHIP Business Analyst)

Last month I brought you an update on the Behavioral Health Integration Project (BHIP). Here is some additional information about where we are in the process.

In addition to the Quality Control and Planning vendor we need to have on a project this size, we are also required to have a Quality Assurance vendor work with BHIP through out our process. There were several responses to our RFP and the selection process for a vendor will occur in January.

The Request for Proposal (RFP) for the BHIP software solution will be posted on Oregon Procurement Information Network (ORPIN): <http://orpin.oregon.gov>. We hope to have the RFP posted sometime in March.

BHIP staff continues to gather information about various systems that might meet our needs. We have been going on site visits around the state to see actual systems in operation. A big thank you to Douglas County Mental Health for letting some of the BHIP staff spend a day with you in November. We also continue to have conference calls with facilities outside of Oregon to hear about their systems.

One of the most important questions we ask facilities on site visits and during conference calls is to share their "lessons learned" in selecting, implementing and training on a new health record system. We believe we can gain some valuable information from others and not have to go through the pain of repeating a process that does not work well.

As I stated in my previous article, the community portion of BHIP is scheduled to occur once we implement at Oregon State Hospital (OSH). But we feel it is important to keep you informed of our process and progress. If you have any questions about BHIP, please email bhip.project@state.or.us.

Thank you for taking the time to read through this newsletter. If you have ideas or questions you want addressed in future newsletters, please let me know. – Piet Vermeer, Research Facilitator, AMH, 503-945-5960 or piet.j.vermeer@state.or.us