

**Permanent Partial Disability Trends:
A 2009 Update to the Workers' Compensation
Management Labor Advisory Committee**

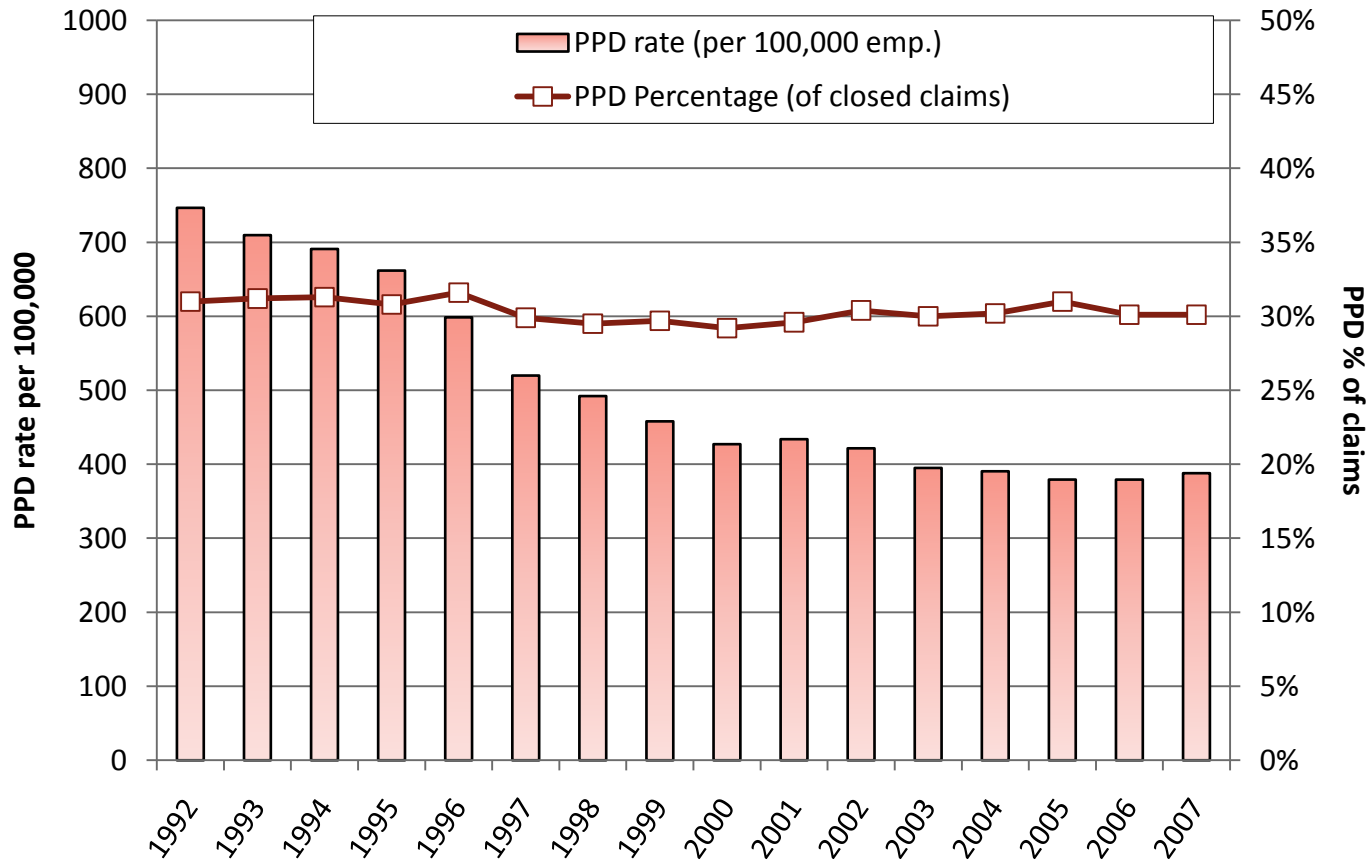
Mike Manley
DCBS Information Management Division

Some recent history

- **2001-2003**: MLAC subcommittee develops PPD concepts
- **2003**: SB 757 passes, new PPD effective for dates of injury from 1-1-05
- **2005**: 757 implemented; HB 2408 modifies RTW criteria and mandates PPD study
- **2006**: Study confirms that PPD benefit changes were cost neutral, and redistributed benefits to more serious cases
- **2007**: HB 2244 passes, removing sunset on new PPD and mandating biennial MLAC review
- **2009**: first mandated PPD update

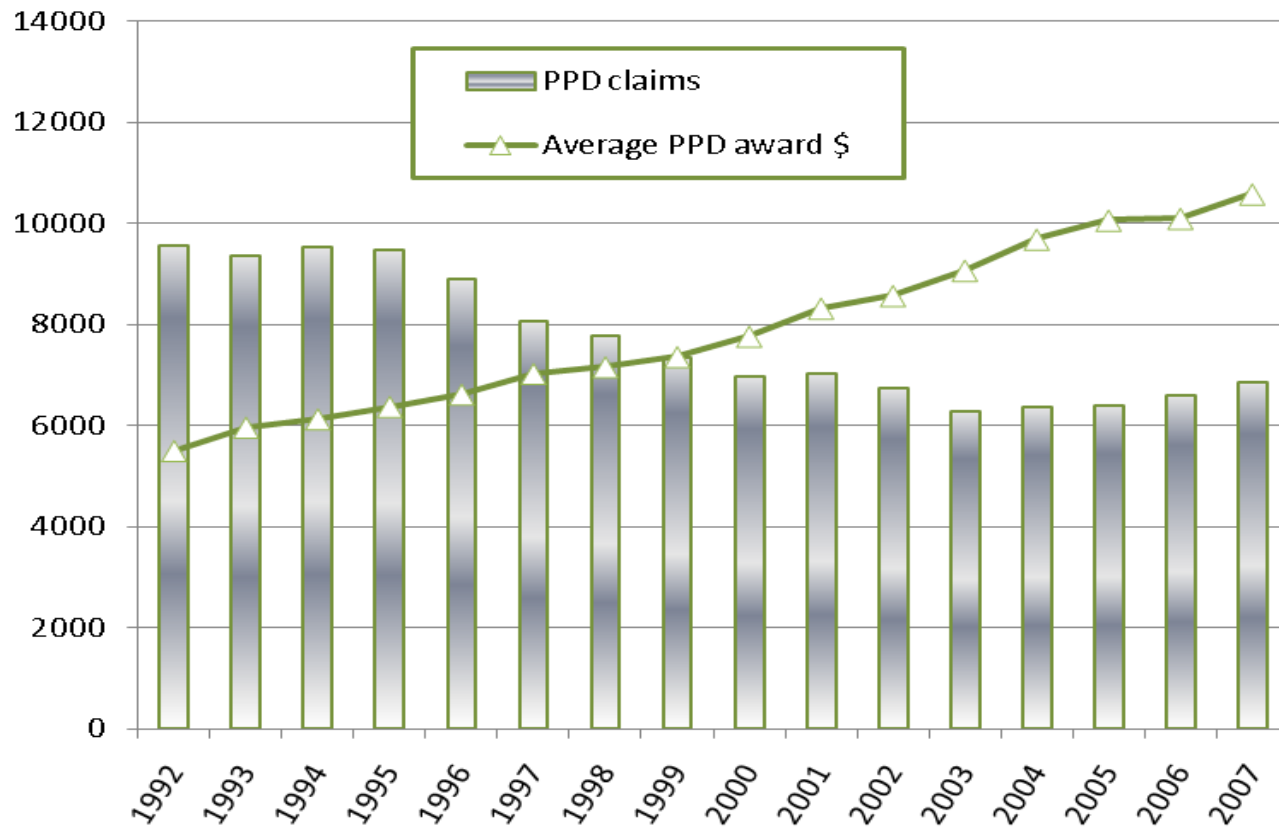
System trends

Figure 1. PPD Trends 1992-2007
Rate of PPD Claims per 100,000 Covered Workers, and
Percent of Disabling Claims Closed with PPD



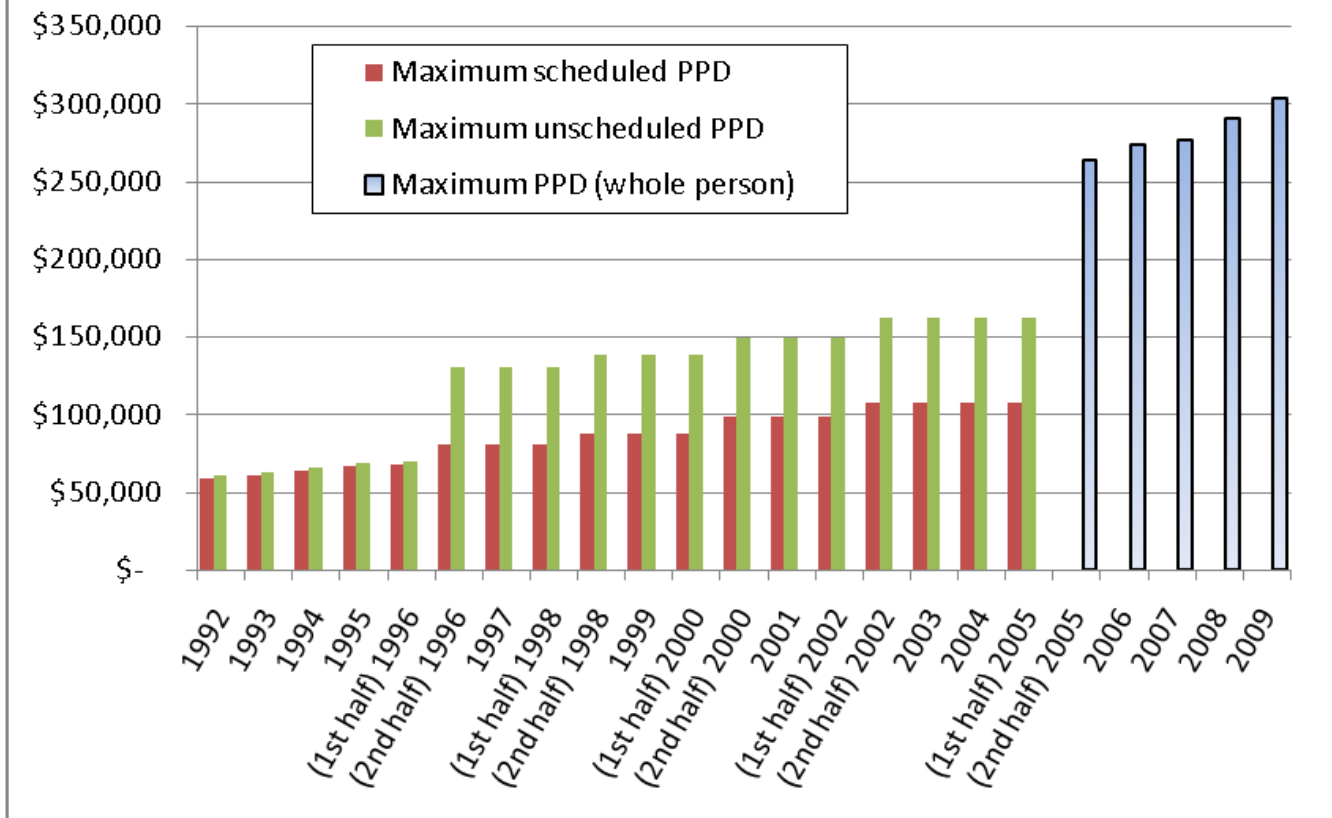
System trends

Figure 2. PPD Trends 1992-2007
Total PPD Claims Closed, and
Average PPD \$ Amount

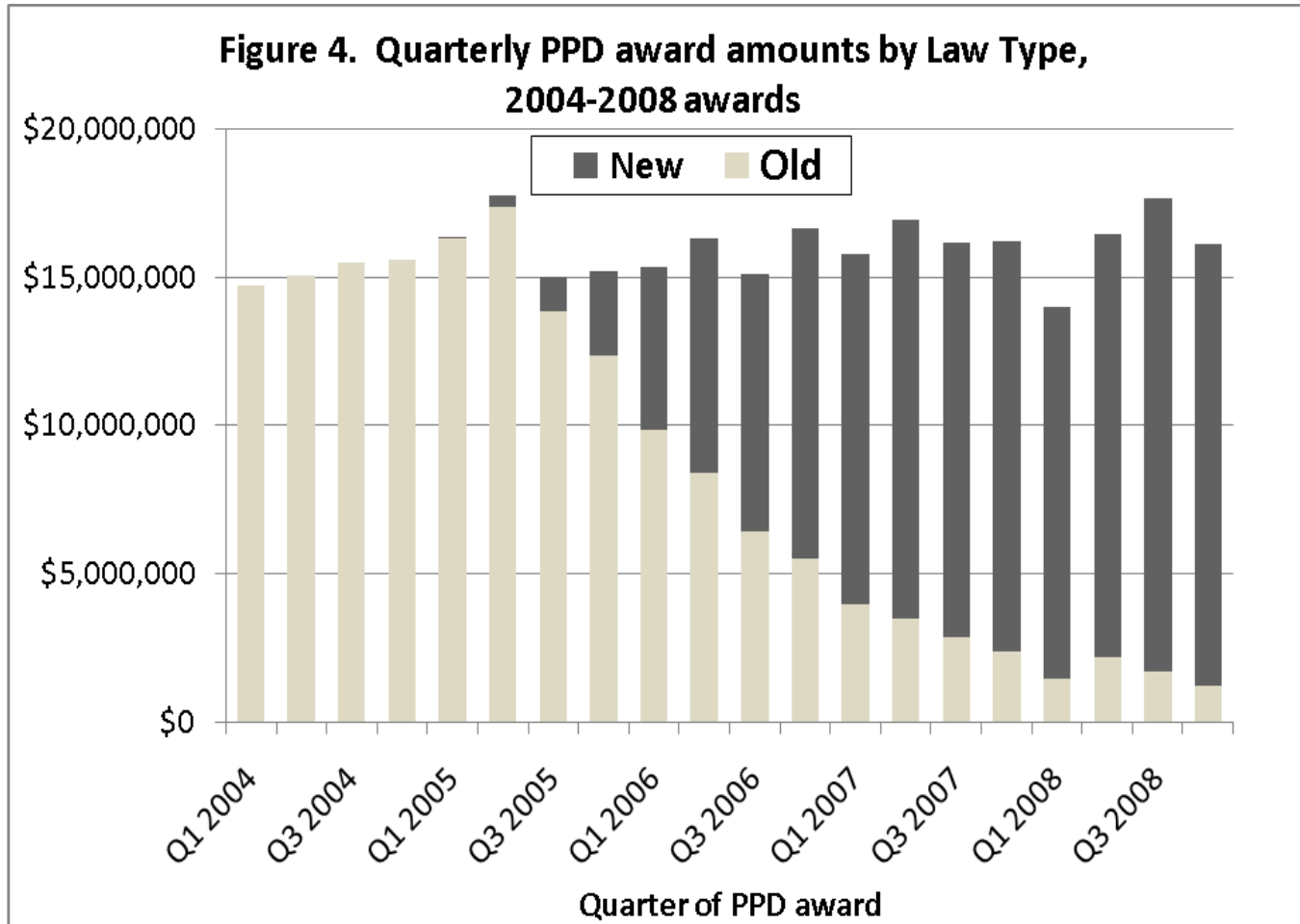


Maximum statutory benefits

Figure 3. Maximum PPD Benefits 1992-Present
Old and New PPD benefit types

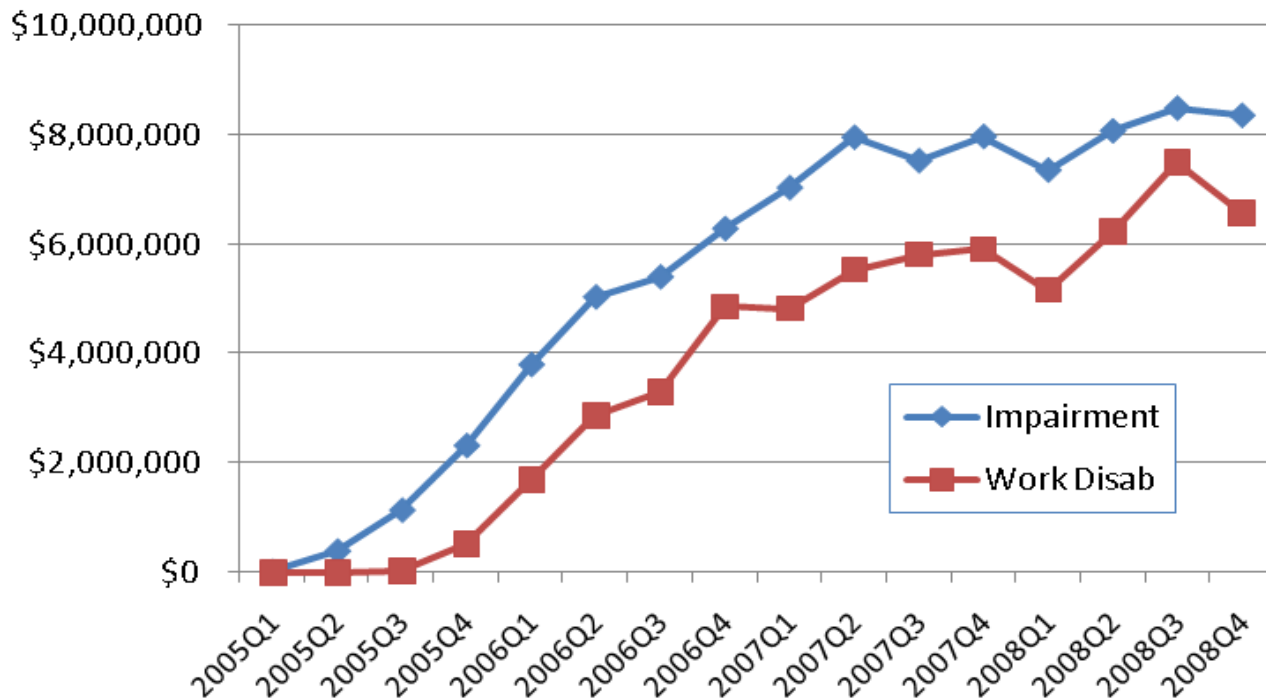


Quarterly PPD Award trends



Benefit characteristics of post-2004 (new PPD) claims

Figure 5. PPD Award Amounts on Post-2004 Claims, by Closure Quarter, 2005-2008



Benefit characteristics of post-2004 (new PPD) claims

Fig.6. % of Award Counts, 2008 New PPD

- Impairment Only
- Work Disability

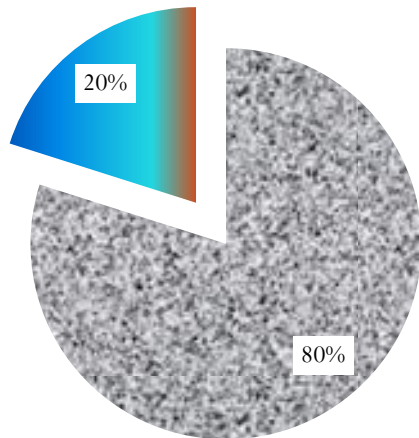
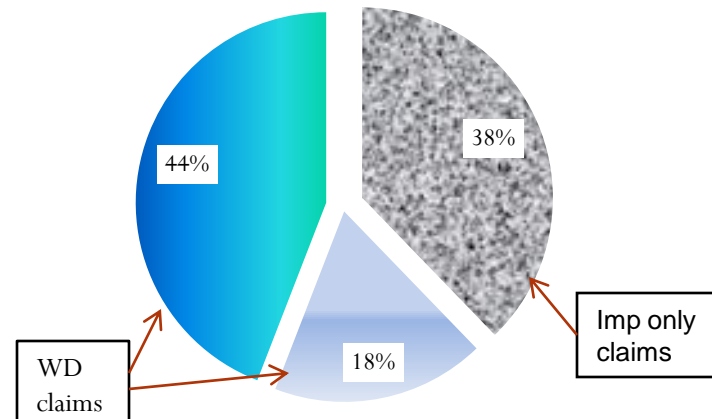
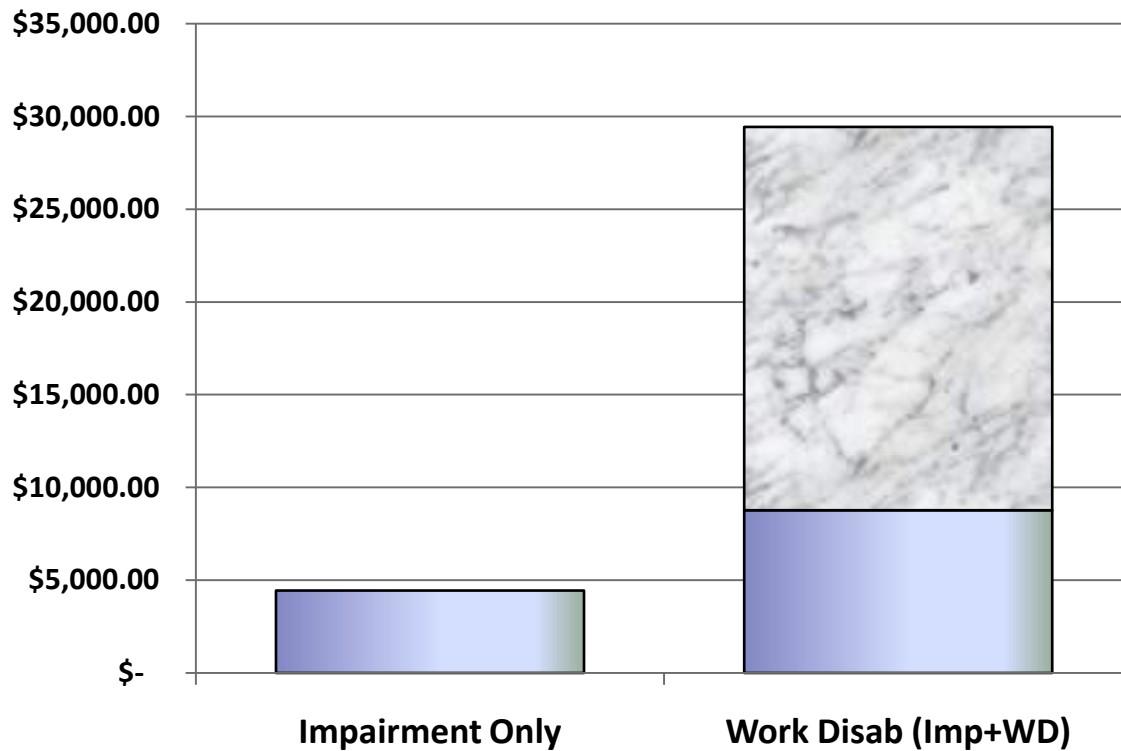


Fig. 7. % of Award \$, 2008 New PPD

- Impairment Only
- Work Disability claim (Imp awd)
- Work Disability claim (WD award)

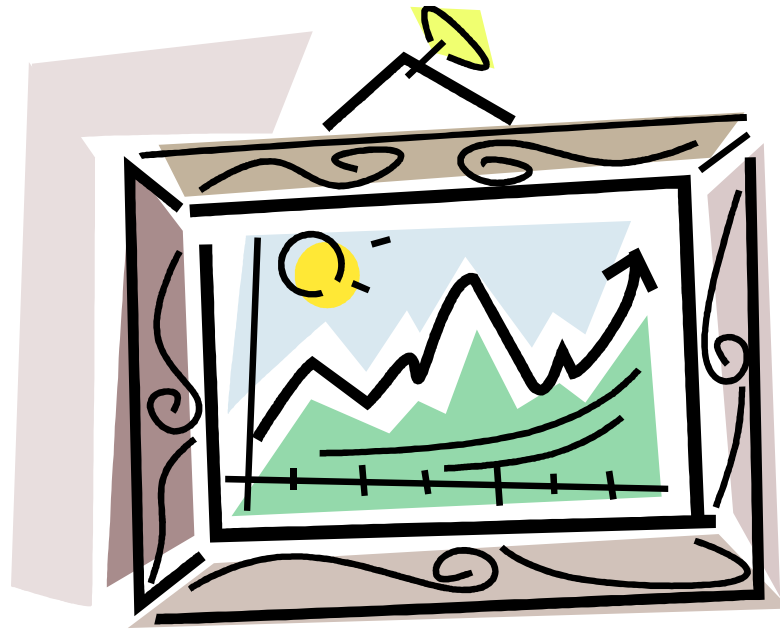


**Fig. 8. Average Award \$
by PPD claim/benefit type,
2008 awards for post-2004 injuries**



Questions?





Thank You

mike.manley@state.or.us