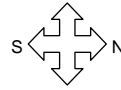


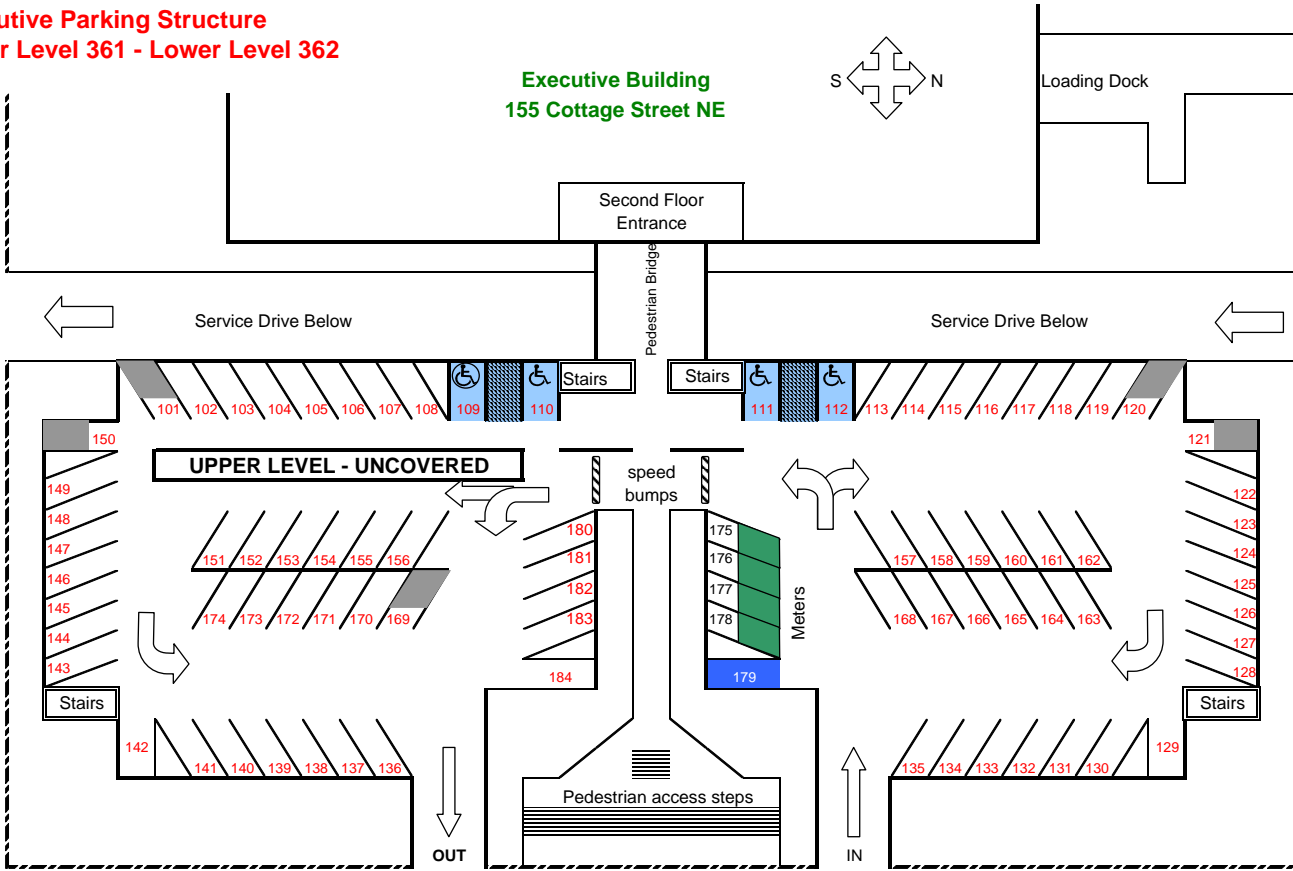
**Executive Parking Structure
Upper Level 361 - Lower Level 362**

**Executive Building
155 Cottage Street NE**



STATE STREET

COURT STREET



COTTAGE STREET

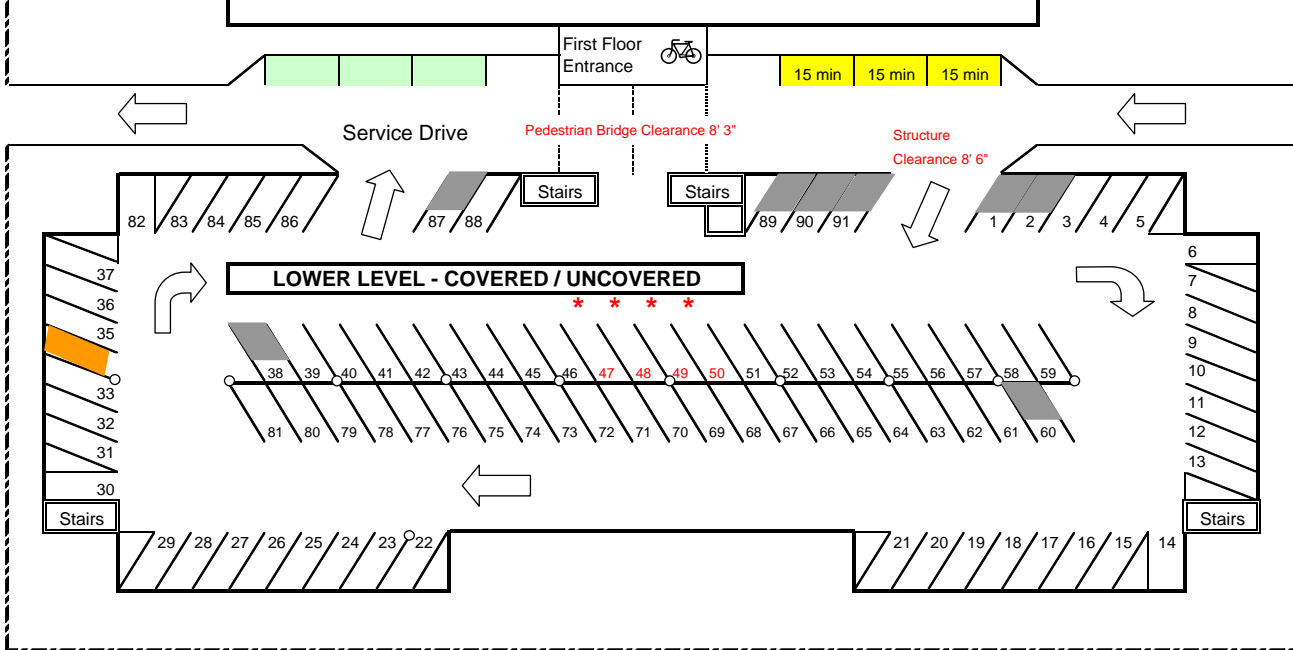
Parking Rates	
Covered, Reserved	\$65 month
Uncovered, Reserved	\$55 month
Motorcycle Permit	\$6 month
Parking Meter	80¢ hour
Bicycle Rack	No Charge

Parking Lot Map Key

- 2 hour meter
- 10 hour meter
- Visitor Disabled
- Wheelchair Only
- Loading Zone
- Service Vehicle
- # # Covered Reserved (numbered spaces)
- * Uncovered, Reserved (numbered spaces)
- Compact Motorcycle
- Bicycle Rack

STATE STREET

COURT STREET



COTTAGE STREET